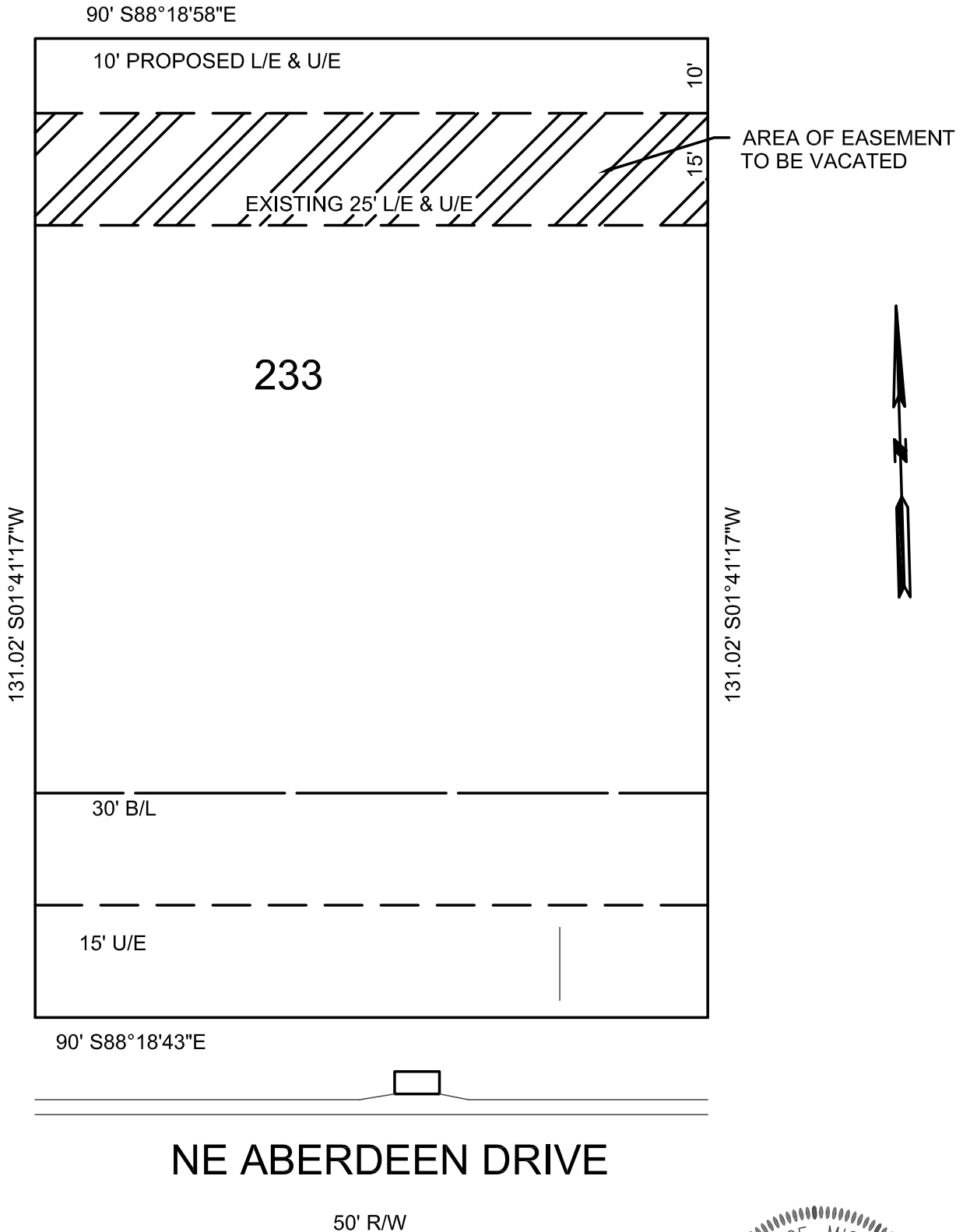


EXHIBIT A

Description of Easement to be vacated:

The South 15 feet of the North 25' of Lot 233, PARK RIDGE 4TH PLAT, in Lee's Summit, Jackson County, Missouri.



→ = DRAINAGE PATTERN



CONSTRUCTION ENGINEERING SERVICES, INC.
16810-C East 40 Highway
Independence, MO 64055
(816)478-2323
lee@engineeringkc.com
SCALE: 1"=20'
DATE:10/12/2020
JOB NO: 17357

LEE BODENHEIMER, L.S.
Land Surveyor