

Comprehensive Plan Update
County Line Rd Area

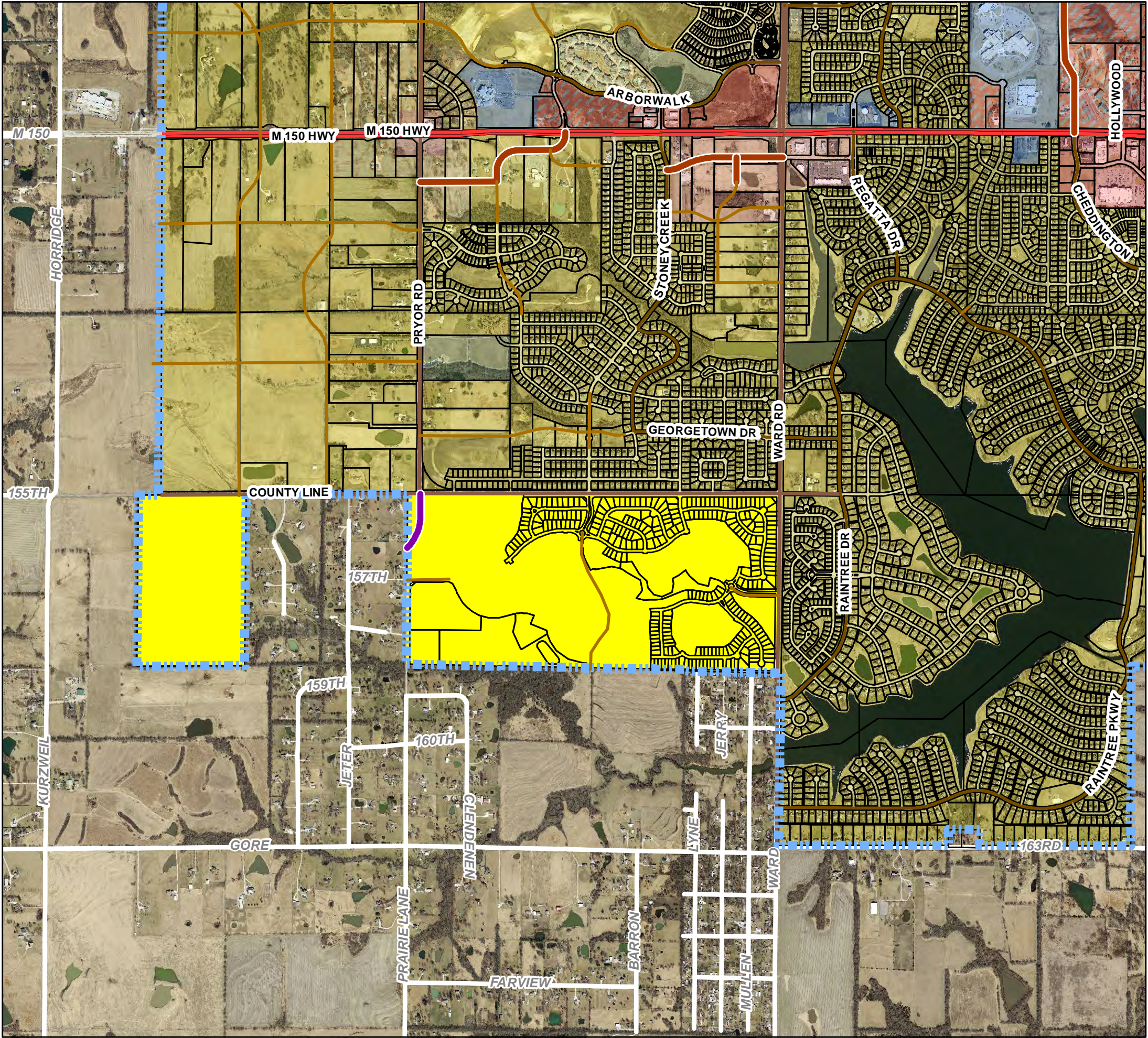
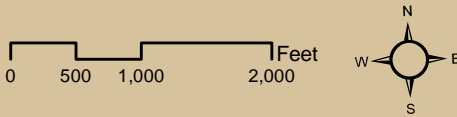
Legend

CURRENT COMP PLAN LAND USE

- L Reserve
- Conservation Area
- Low-density Residential
- Master-Planned Development-3rd Tier
- Medium Density Residential
- Medium/High-density Residential
- Mix Use-John Knox Village
- Residential Mixed-density
- Planned Mixed Use (Restricted, O/RES)
- Planned Mixed Use (Restricted, R/O/RES)
- Office
- Commercial-dominant Mix Use
- Commercial (Office/Retail)
- Master-Planned Development-2nd Tier
- Retail
- Retail Commercial-Regional
- Long-term Retail Opportunity
- Business Park
- Public/Semi-public
- Industrial
- Old Town Master Development Plan
- Special Development District
- Lake
- Park, Golf Course, Nature Pres
- Planned Mixed Use
- Runway Protection Zone
- Airport
- Parcel
- City Limits
- TFMP Residential Collector
- TFMP MoDOT
- TFMP Minor Arterial
- TFMP Major Arterial
- TFMP Local
- TFMP Com/Ind Collector

PROPOSED LAND USE

- L Reserve
- Low-density Residential
- Medium Density Residential
- Medium/High-density Residential
- Planned Mixed Use (Restricted, O/RES)
- Office
- Commercial (Office/Retail)
- Retail
- Public/Semi-public
- Park, Golf Course, Nature Pres
- Proposed Land Use Change Area



Comprehensive Plan Update
Woods Chapel Area

Legend

CURRENT COMP PLAN LAND USE

- L Reserve
- Conservation Area
- Low-density Residential
- Master-Planned Development-3rd Tier
- Medium Density Residential
- Medium/High-density Residential
- Mix Use-John Knox Village
- Residential Mixed-density
- Planned Mixed Use (Restricted, O/RES)
- Planned Mixed Use (Restricted, R/O/RES)
- Office
- Commercial-dominant Mix Use
- Commercial (Office/Retail)
- Master-Planned Development-2nd Tier
- Retail
- Retail Commercial-Regional
- Long-term Retail Opportunity
- Business Park
- Public/Semi-public
- Industrial
- Old Town Master Development Plan
- Special Development District
- Lake
- Park, Golf Course, Nature Pres
- Planned Mixed Use
- Runway Protection Zone
- Airport
- Parcel
- City Limits
- TFMP Residential Collector
- TFMP MoDOT
- TFMP Minor Arterial
- TFMP Major Arterial
- TFMP Local
- TFMP Com/Ind Collector

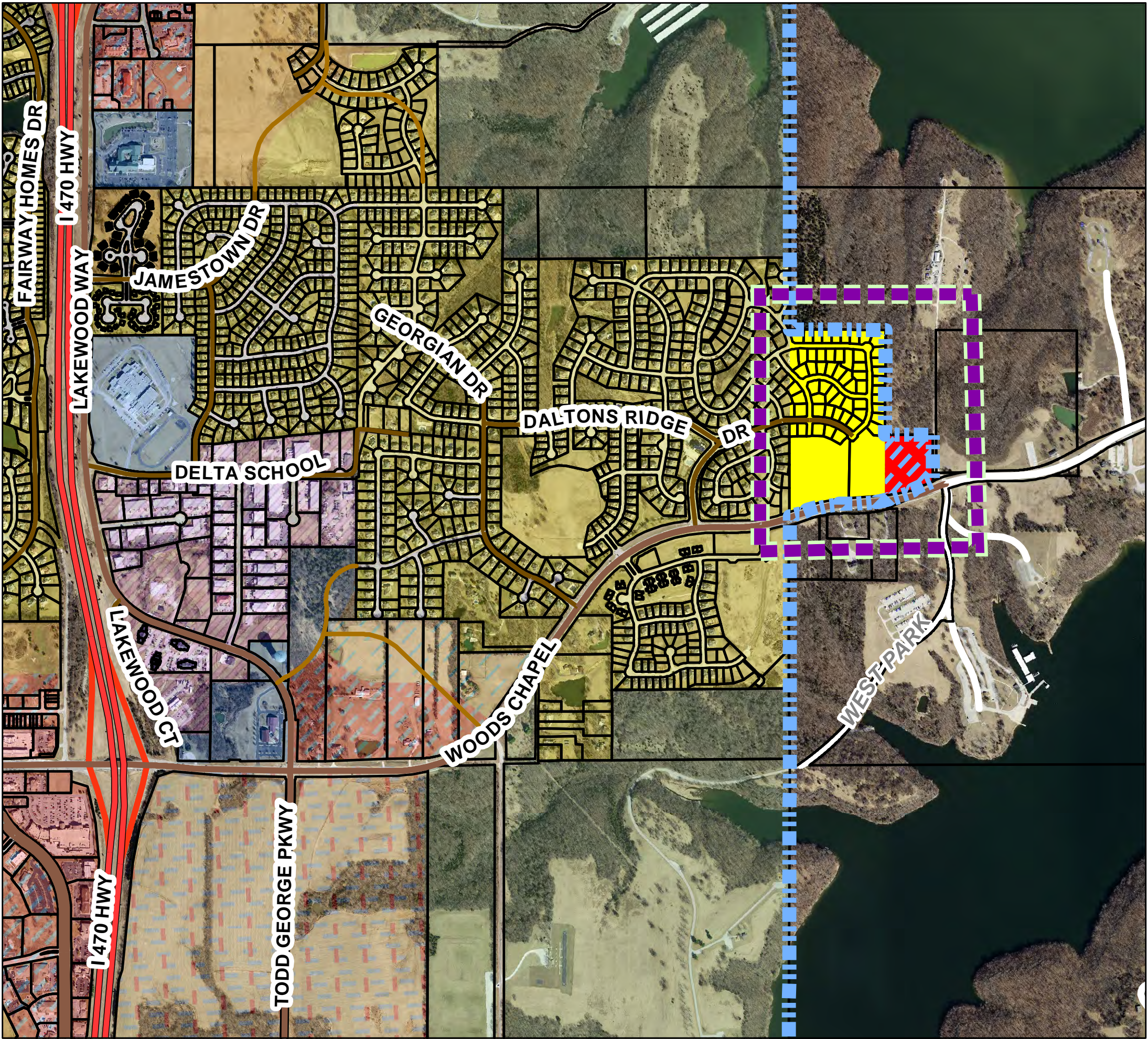
PROPOSED LAND USE

- L Reserve
- Low-density Residential
- Medium Density Residential
- Medium/High-density Residential
- Planned Mixed Use (Restricted, O/RES)
- Office
- Commercial (Office/Retail)
- Retail
- Public/Semi-public
- Park, Golf Course, Nature Pres
- Proposed Land Use Change Area

0 250 500 1,000 Feet



Map produced by: Planning and Special Projects * Nov. 2018



I:\Planning\Comprehensive Plan Update Woods Chapel Area Jan 2019

Comprehensive Plan Update Blackwell Interchange Area

Legend

CURRENT COMP PLAN LAND USE

- L Reserve
- Conservation Area
- Low-density Residential
- Master-Planned Development-3rd Tier
- Medium Density Residential
- Medium/High-density Residential
- Mix Use-John Knox Village
- Residential Mixed-density
- Planned Mixed Use (Restricted, O/RES)
- Planned Mixed Use (Restricted, R/O/RES)
- Office
- Commercial-dominant Mix Use
- Commercial (Office/Retail)
- Master-Planned Development-2nd Tier
- Retail
- Retail Commercial-Regional
- Long-term Retail Opportunity
- Business Park
- Public/Semi-public
- Industrial
- Old Town Master Development Plan
- Special Development District
- Lake
- Park, Golf Course, Nature Pres
- Planned Mixed Use
- Runway Protection Zone
- Airport
- Parcel
- City Limits
- TFMP Residential Collector
- TFMP MoDOT
- TFMP Minor Arterial
- TFMP Major Arterial
- TFMP Local
- TFMP Com/Ind Collector

PROPOSED LAND USE

- L Reserve
- Low-density Residential
- Medium Density Residential
- Medium/High-density Residential
- Planned Mixed Use (Restricted, O/RES)
- Office
- Commercial (Office/Retail)
- Retail
- Public/Semi-public
- Park, Golf Course, Nature Pres
- Proposed Land Use Change Area

0 500 1,000 2,000 Feet



Exhibit A

