

Yours Truly

2017-2018 SNOW AND ICE PROGRAM

City Council Work Session

November 9, 2017

Outline

- Snow and Ice Plan Overview
- Routing Philosophy
- Residential Streets
- Communication
- New Equipment
- New Technology
- Questions

Snow Plan

- The City's Snow Plan outlines steps for the completion of storm response within **32 ½ - 48 hours after precipitation has ended** provided that required levels of equipment and personnel are available.



Snow Plan

- Level 1 (pre-treat)
- Level 2 (<1" of snow) 24 hrs
- Level 3 (>1" – 6" of snow) 32.5 hrs
(>6" – 10" of snow) 40 hrs
- Level 4 (>10" or more snow) 48 hrs
- Level 5 (sustained winds >30 mph) 48 hrs

Snow Plan

- Level 1 44 snow plow drivers
- Level 2 44 snow plow drivers
- Level 3 58 snow plow drivers
- Level 4 70 snow plow drivers
- Level 5 70 snow plow drivers

NOTE: 25 dedicated drivers from Operations. We rely on paid volunteers from other departments to fill snow plows.

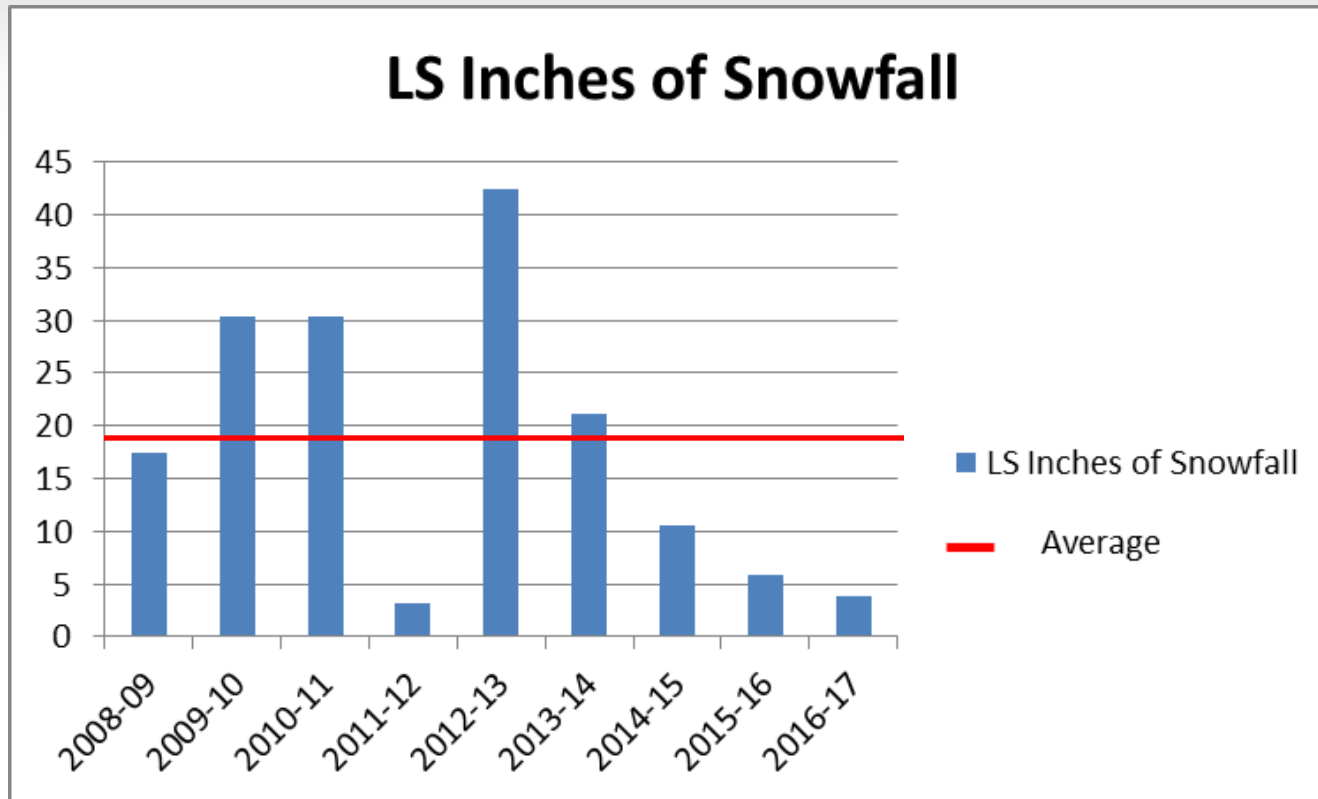
Snow Plan

Additional drivers come from:

- Water
- Engineering
- Development Services
- Police
- Admin
- HR



Snow Plan



Snow Plan

- Common Complaints
 - The city never plows my street
 - The driver did not do a good job
 - The plow covered my driveway/sidewalk/hydrant
 - The city is wasting money pre-treating
 - More expensive neighborhoods get plowed first
 - My street has more houses – make it a secondary route
 - Insert a city here _____ does a better job

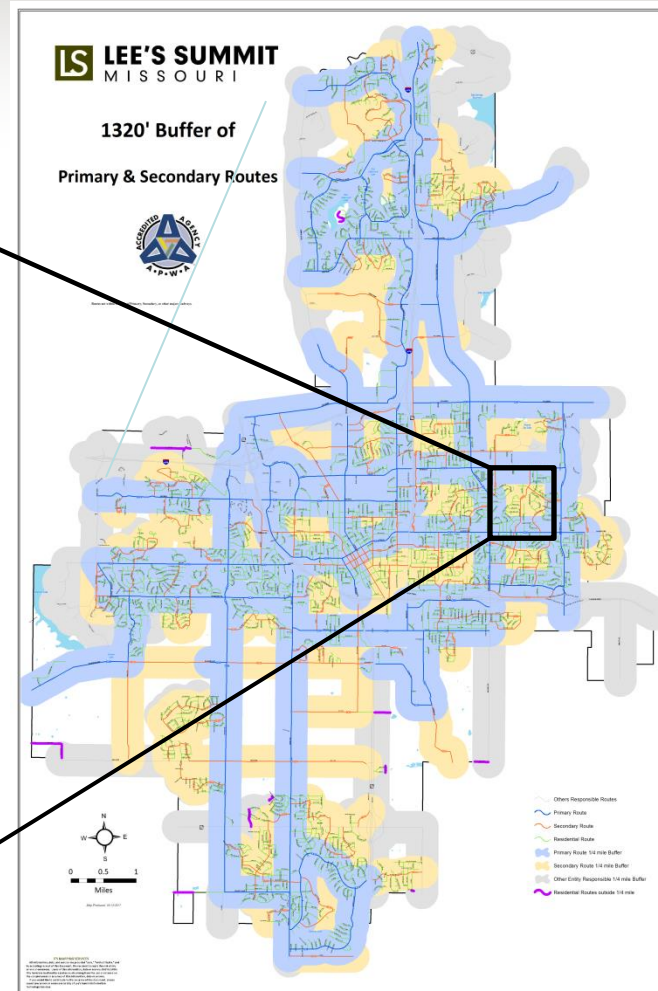
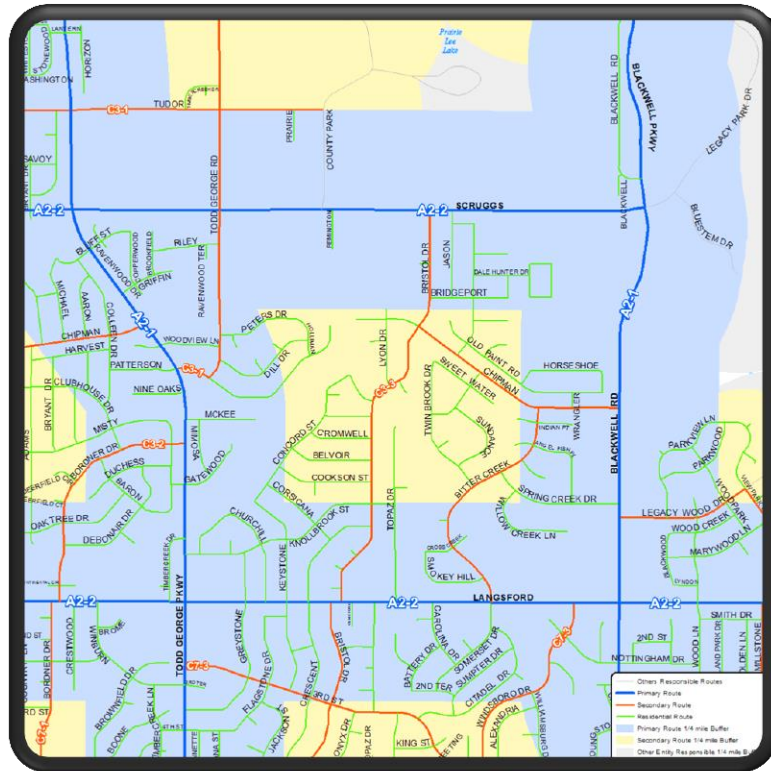
Routing Philosophy

- Primary Routes – Four hours to complete
 - Major roads
- Secondary Routes – Eight hours to complete
 - Feeder roads to and from subdivisions
- Residential Routes – Twenty hours to complete
 - All other roads

Routing Philosophy

- Primary streets are generally completed within four hours after snow stops.
- Secondary streets are generally completed within 12 hours after snow stops.
- It is our goal to have access to most properties within $\frac{1}{4}$ mile of a primary or secondary street within 12 hours.

Routing Philosophy



Routing Philosophy

RT	A	B	C	D	E	F	G	H	I	J	K	L	M	N	O	P
R1																
R2																
R3																
R4																
R5																
R6																
R7																
R8																
R9																

Residential Streets

- LS has 1057 lane miles to plow and treat every snow storm including 1145 cul-de-sacs
- Lakewood (LPOA) 33 Lane Miles
- During storms streets are plowed multiple times. Some storms require plowing and treating over 3,000 lane miles.

Residential Streets



Residential Streets



Communication

- LSsnow.net
 - Snow Plan
- Training
- Dry Run
- Event Communication
 - Media Notifications
 - LSsnow.net
 - Facebook
 - Twitter



Communication

- Snow Desk phone message will set expectations
 - What to do in an emergency situation
 - When to call for a missed street
 - Leave a message for yard or mailbox damage
- Voicemail will be checked for messages that require action from Public Works

New Equipment



Wing Plows



New Technology

- Route Optimization (FY19)



New Technology

- Turn by turn routing (FY19)



APWA

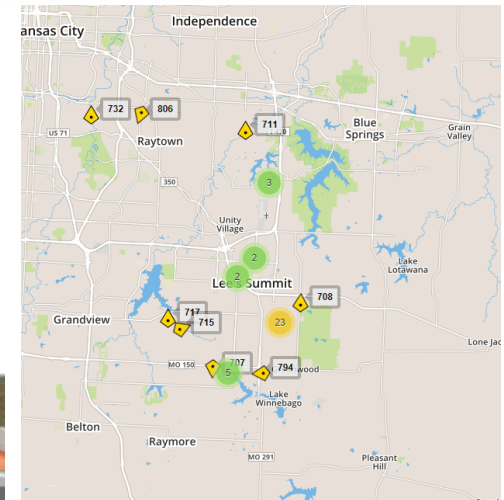
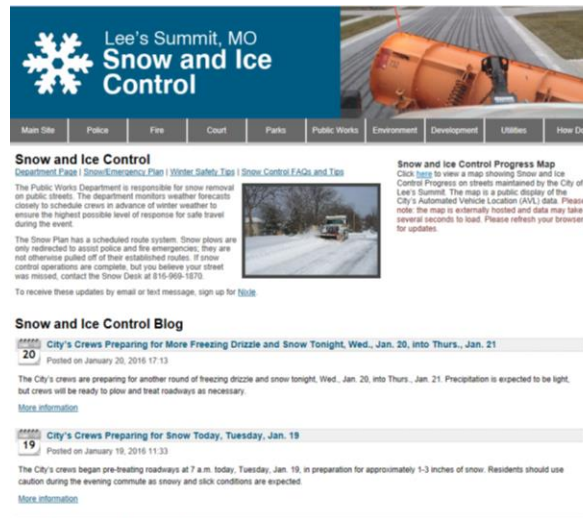
- Attend Snow Conference
 - Latest technologies
 - Materials and Methods
 - Education
- Participate in Metro training
- LS results in Rodeo

Questions



Existing Technology

- Automated Vehicle Locating (AVL)
- Snow Tracker
- LSsnow.net
- Public Facing Website
 - LSsnow.net



Pre-Treatment



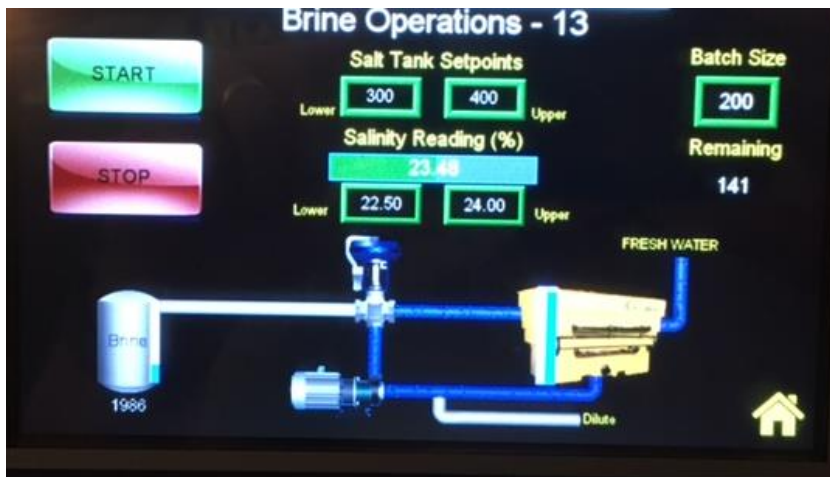
Communication

- Media updates are sent out before each storm
- The City uses social media to push updates to citizens
- LSsnow.net the City's snow page has the latest information

New Equipment



New Equipment



Accuweather



Farmers Almanac

