

# ELLIS GLEN

2ND & MARKET ST.  
LEE'S SUMMIT, MO 64063

## PRELIMINARY DEVELOPMENT - UPDATED

12 JULY 2022

COLLINS WEBB #: 21095



### OWNER

ELLIS GLEN  
120 T STREET  
LAKE LOTAWANA, MO 64083

### ARCHITECT

COLLINS | WEBB ARCHITECTURE  
307B SW MARKET STREET  
LEE'S SUMMIT, MISSOURI 64063  
P: 816.249.2270  
www.collinsandwebb.com

### CONTRACTOR

NEIGHBORS CONSTRUCTION COMPANY INC.  
15226 W 87TH ST. PKWY  
LENEXA, KS 66219  
P: 913.422.5555  
www.neighborsconstruction.com

### CIVIL ENGINEER

MKEC  
11827 W 112TH ST. STE. 200  
OVERLAND PARK, KS 66210  
P: 913.317.9390  
www.mkec.com

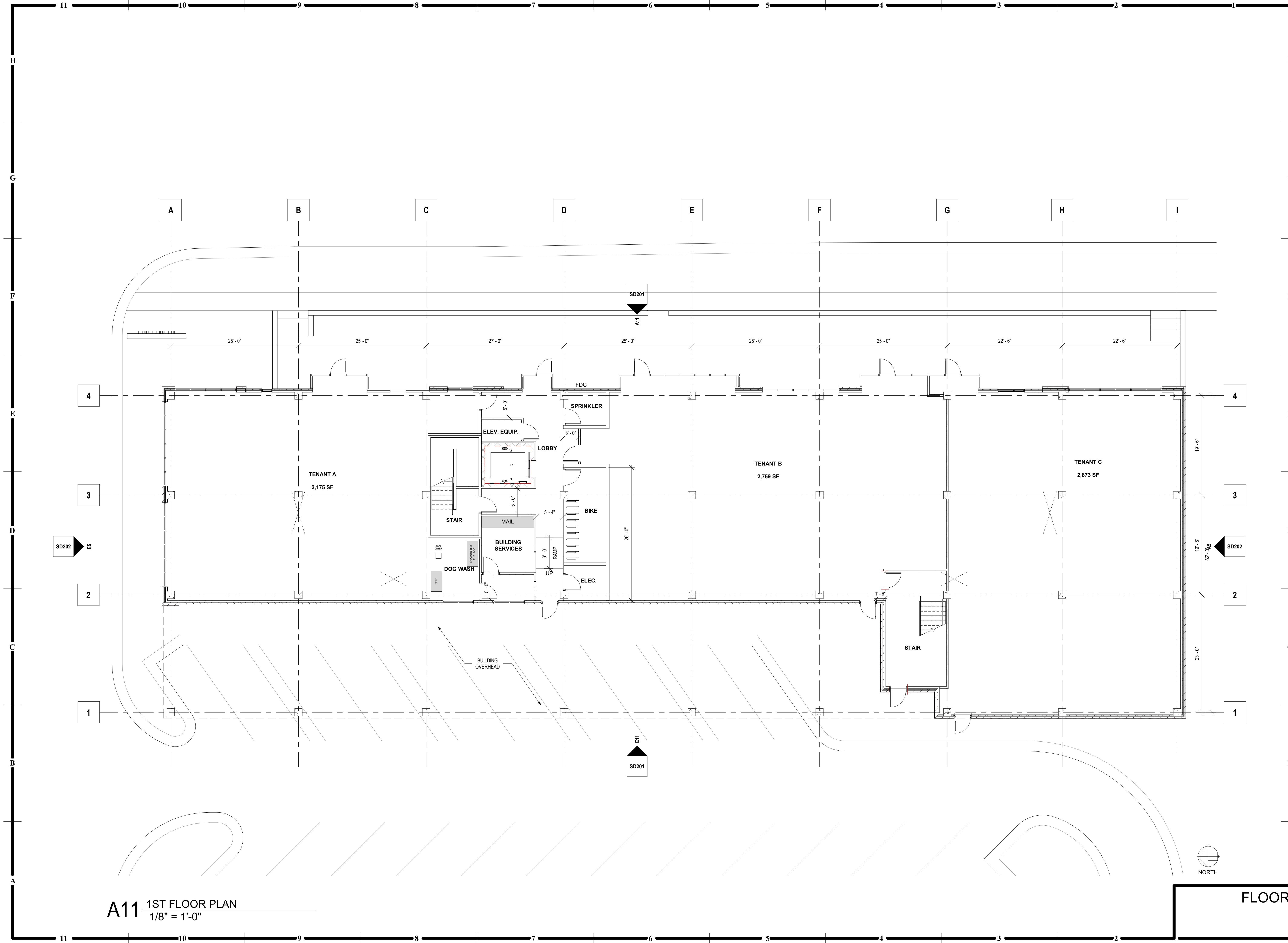
### STRUCTURAL ENGINEER

STRAND SYSTEMS ENGINEERING  
10003 TECHNOLOGY BLVD WEST  
DALLAS, TX 75220  
P: 972.620.8204  
www.strandae.com

### MEP ENGINEER

JSC ENGINEERS  
1925 CENTRAL ST. SUITE 201  
KANSAS CITY, MO 64108  
P: 816.272.5289  
www.jsceengineers.com

7/12/2022 12:07:38 PM



**A11** 1ST FLOOR PLAN  
1/8" = 1'-0"

FLOOR PLAN - 1ST FLOOR



**ELLIS GLEN**  
2ND & MARKET ST.  
LEE'S SUMMIT, MO 64063

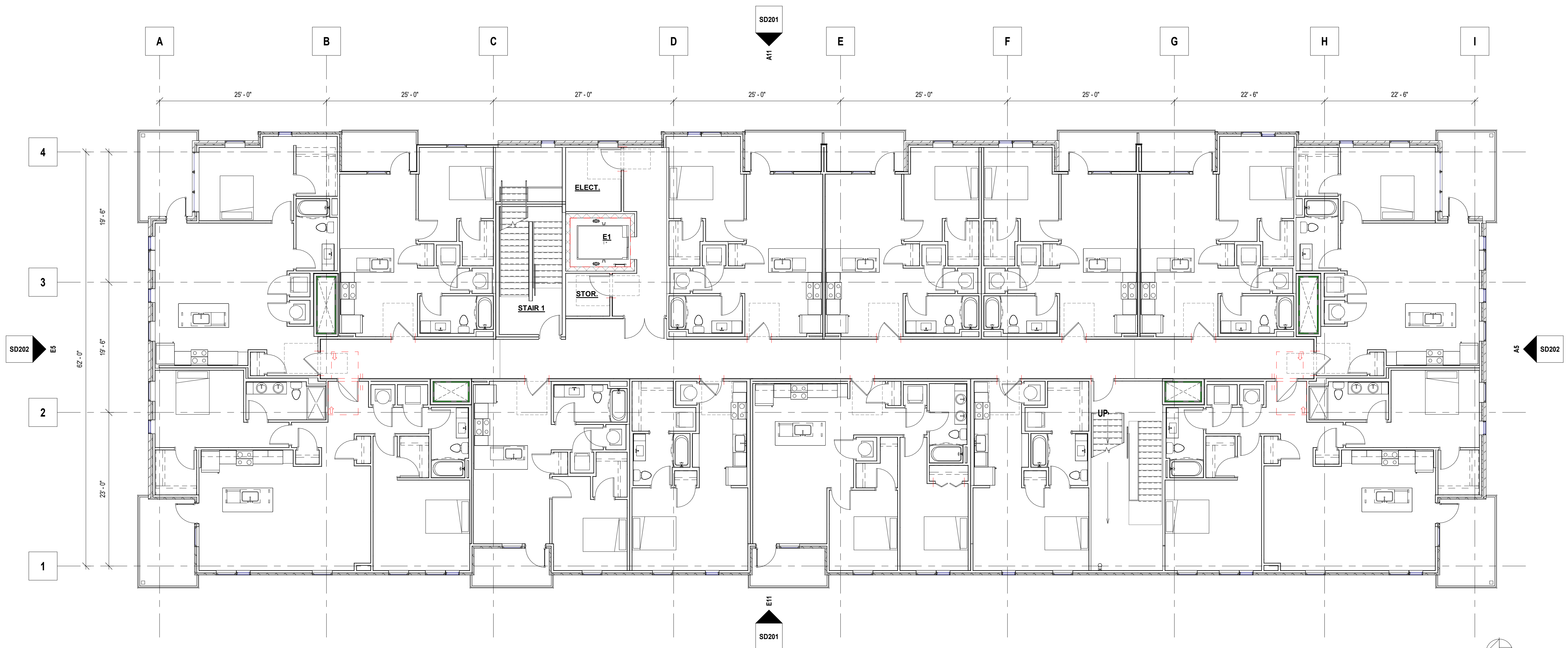
COPYRIGHT © BY  
COLLINS WEBB  
ARCHITECTURE, LLC  
REVISION DATES:

NOT FOR  
CONSTRUCTION

PROFESSIONAL SEAL  
**SD101**  
ISSUE DATE: 12 JULY 2022  
COLLINS WEBB #: 21095

PRELIMINARY DEVELOPMENT - UPDATED

7/12/2022 12:07:42 PM



**A11** 2ND FLOOR PLAN  
 1/8" = 1'-0"



307B SW Market St., Lee's Summit, Missouri 64063 | 816.249.2270 | www.collinswebb.com

**ELLIS GLEN**  
 2ND & MARKET ST.  
 LEE'S SUMMIT, MO 64063

COPYRIGHT © BY  
 COLLINS WEBB  
 ARCHITECTURE, LLC  
 REVISION DATES:

NOT FOR  
 CONSTRUCTION

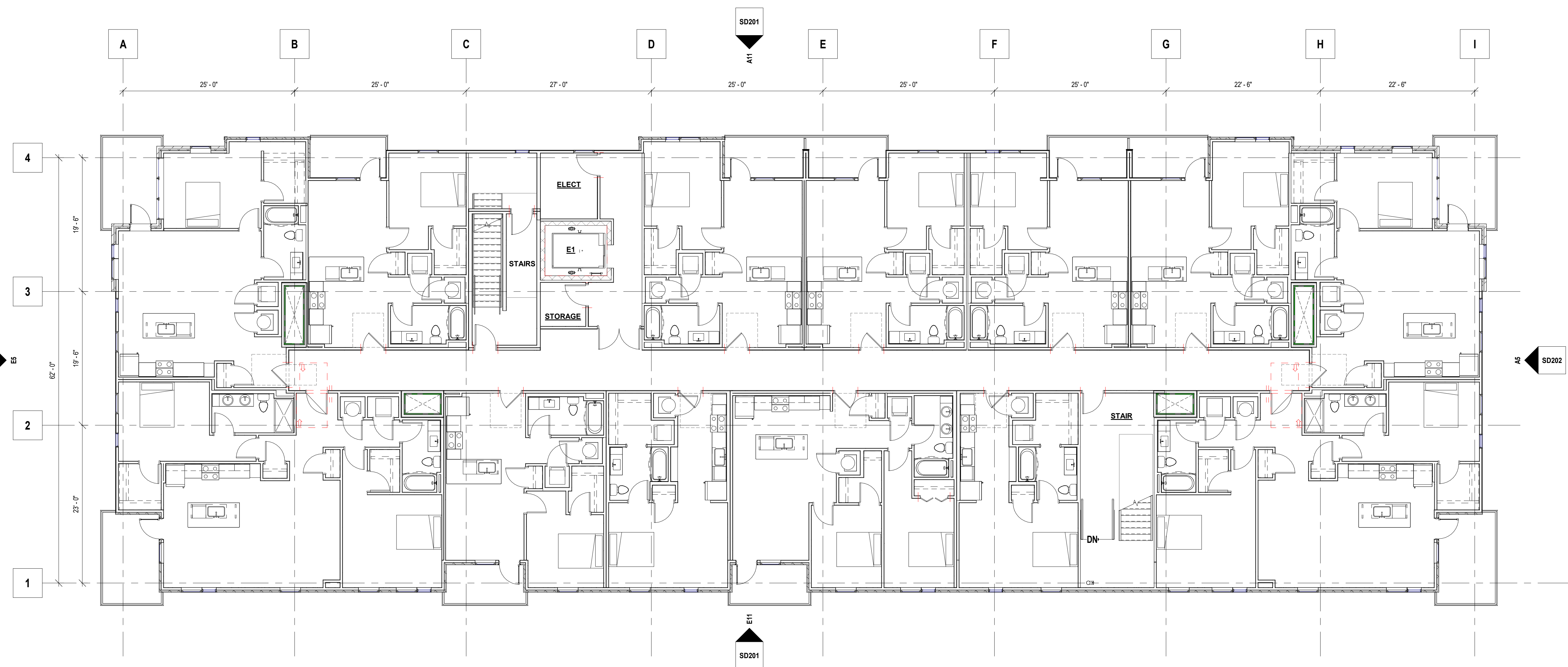
PROFESSIONAL SEAL

**SD102**  
 ISSUE DATE: 12 JULY 2022  
 COLLINS WEBB #: 21095

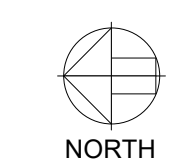
PRELIMINARY DEVELOPMENT - UPDATED

FLOOR PLAN - 2ND FLOOR

7/12/2022 12:07:47 PM



A11 3RD FLOOR  
 1/8" = 1'-0"



FLOOR PLAN - 3RD FLOOR



**ELLIS GLEN**  
 2ND & MARKET ST.  
 LEE'S SUMMIT, MO 64063

PRELIMINARY DEVELOPMENT - UPDATED

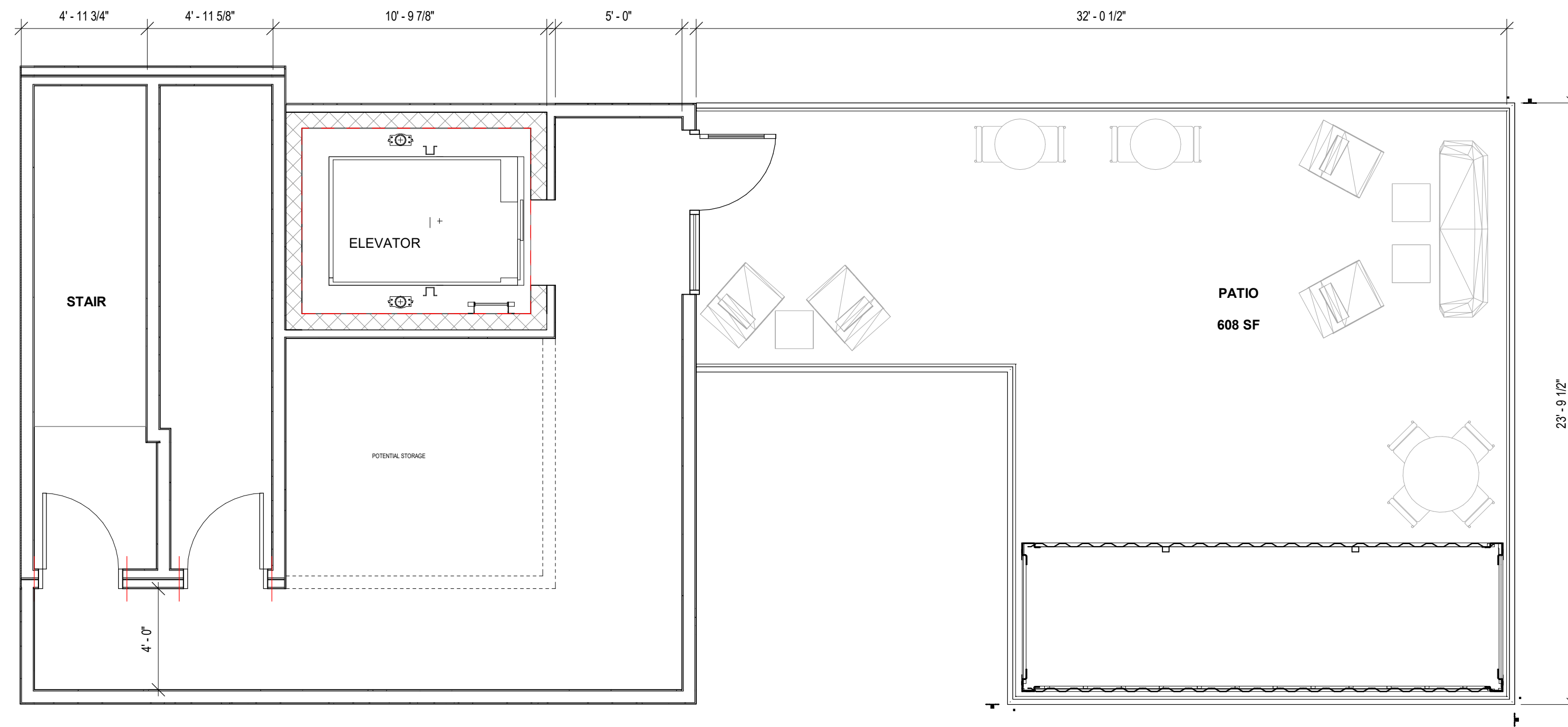
COPYRIGHT © BY  
 COLLINS WEBB  
 ARCHITECTURE, LLC

REVISION DATES:

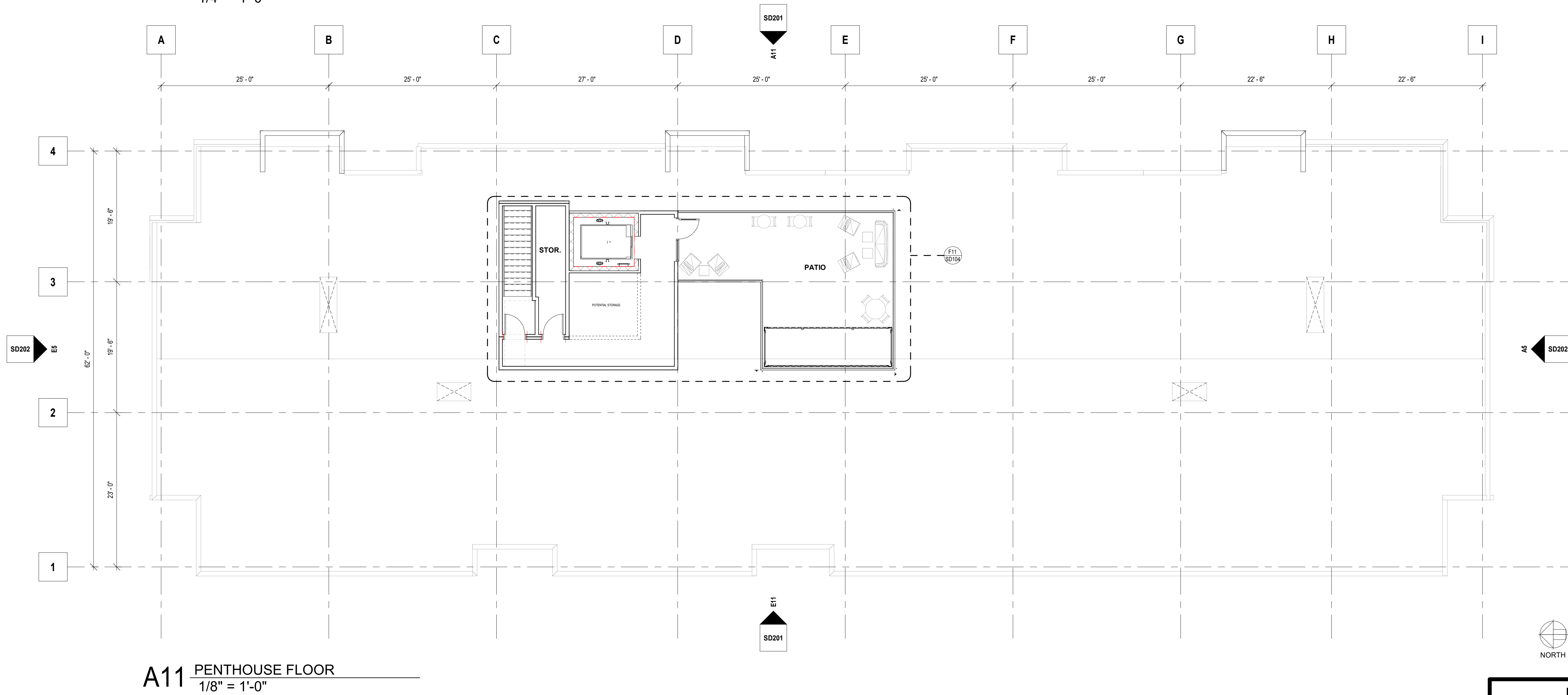
NOT FOR  
 CONSTRUCTION

PROFESSIONAL SEAL  
**SD103**  
 ISSUE DATE: 12 JULY 2022  
 COLLINS WEBB #: 21095

307B SW Market St., Lee's Summit, Missouri 64063 | 816.249.2270 |  
 www.collinswebb.com

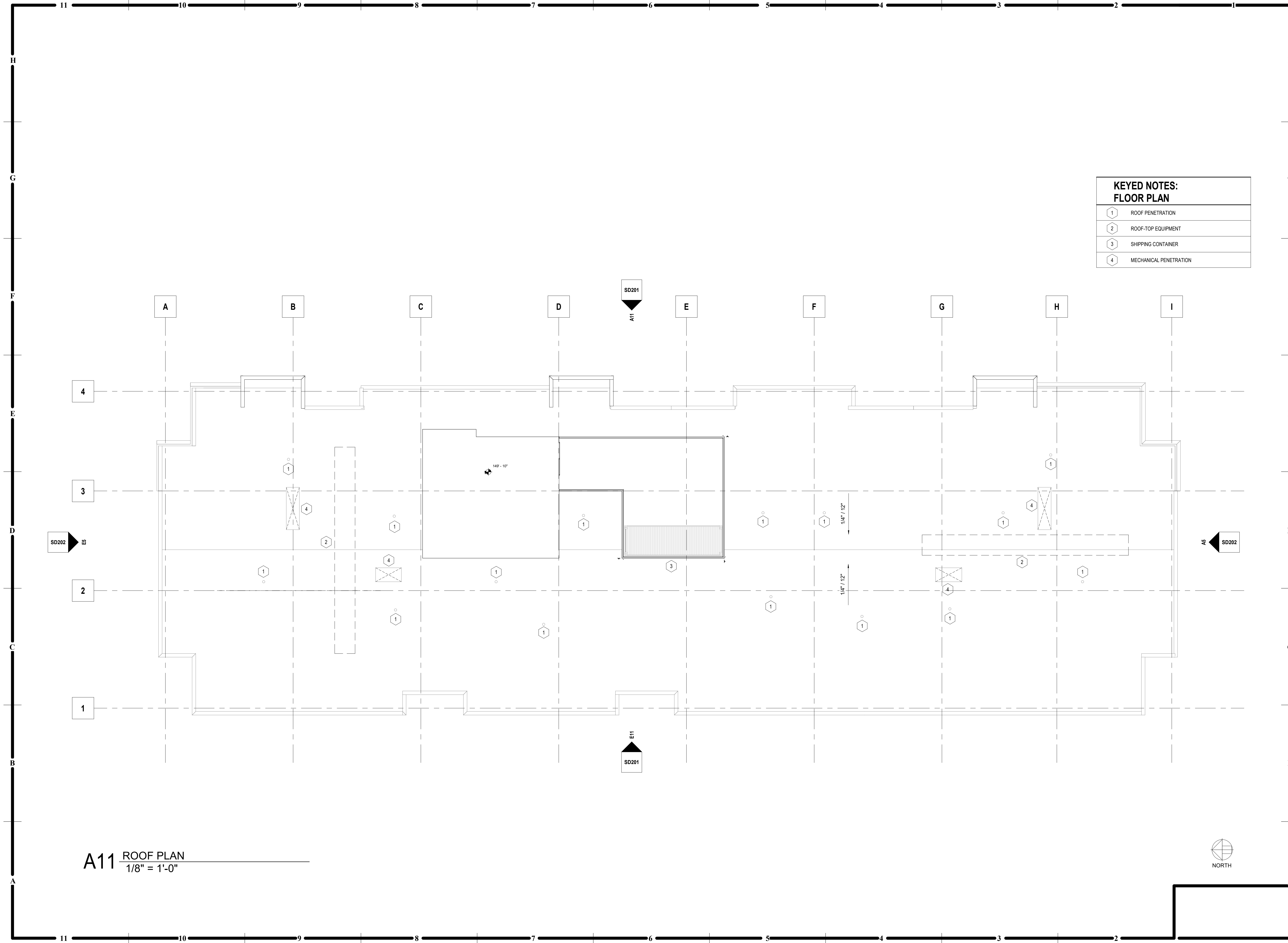


**F11** ENLARGED PLAN - PENTHOUSE  
1/4" = 1'-0"



**A11** PENTHOUSE FLOOR  
1/8" = 1'-0"

7/12/2022 12:07:50 PM



KEYED NOTES: FLOOR PLAN	
1	ROOF PENETRATION
2	ROOF-TOP EQUIPMENT
3	SHIPPING CONTAINER
4	MECHANICAL PENETRATION

**A11** ROOF PLAN  
1/8" = 1'-0"



**ELLIS GLEN**  
2ND & MARKET ST.  
LEE'S SUMMIT, MO 64063

PRELIMINARY DEVELOPMENT - UPDATED

COPYRIGHT © BY  
COLLINS WEBB  
ARCHITECTURE, LLC

REVISION DATES:

NOT FOR  
CONSTRUCTION

PROFESSIONAL SEAL  
**SD105**  
ISSUE DATE: 12 JULY 2022  
COLLINS WEBB #: 21095

**ROOF PLAN**

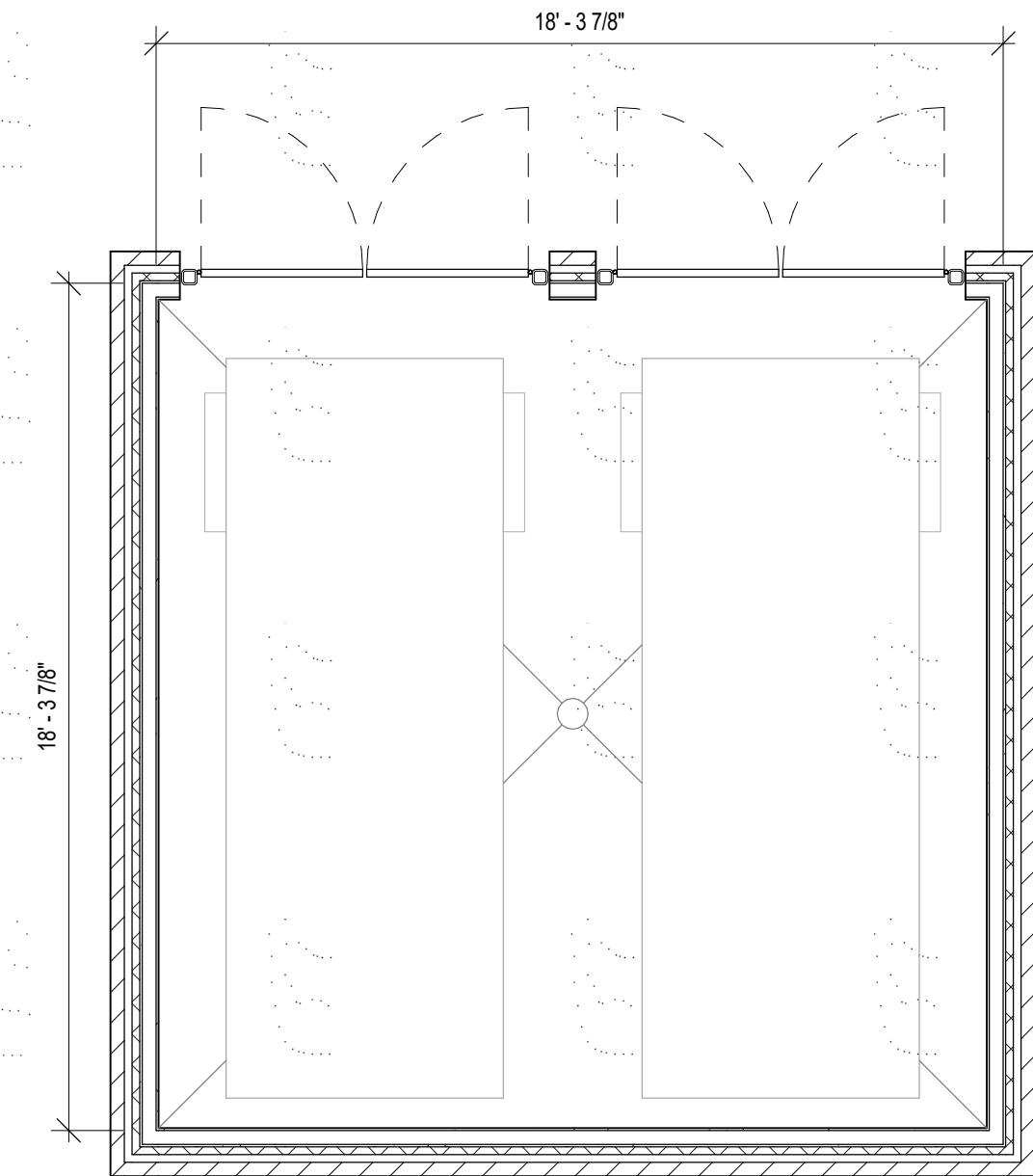
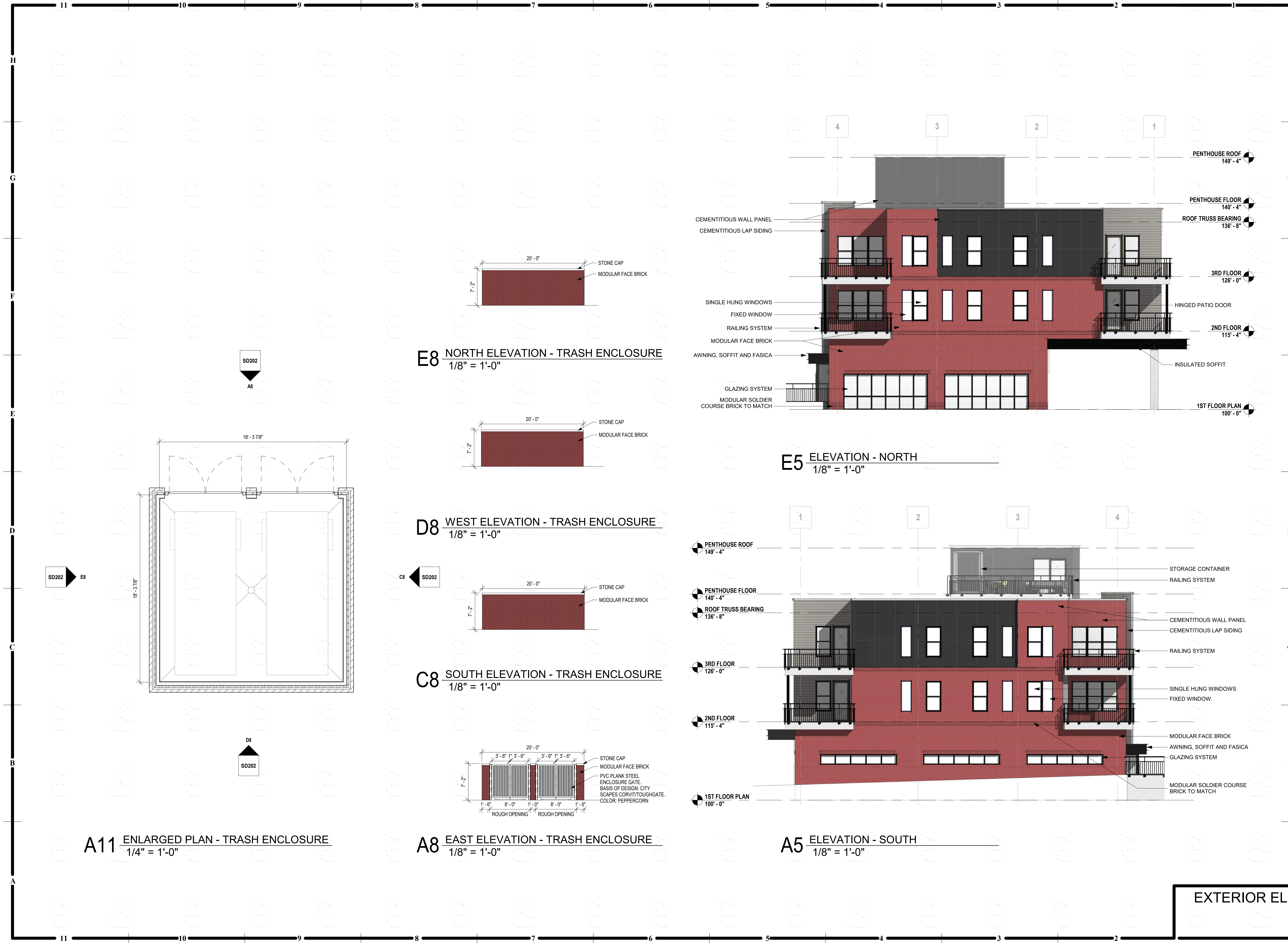


**E11** ELEVATION - WEST  
 1/8" = 1'-0"

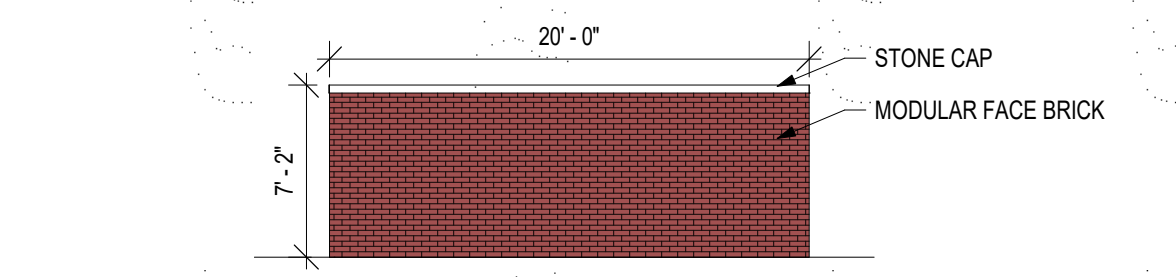


**A11** ELEVATION - EAST  
 1/8" = 1'-0"

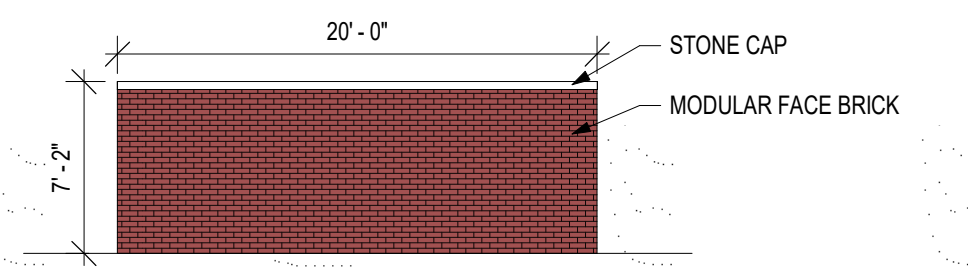
7/12/2022 12:10:12 PM



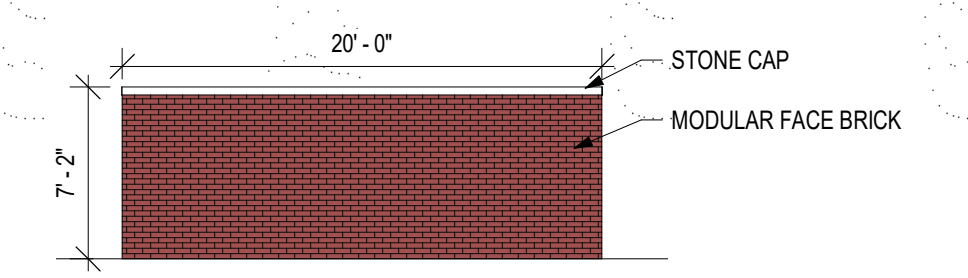
**A11 ENLARGED PLAN - TRASH ENCLOSURE**  
1/4" = 1'-0"



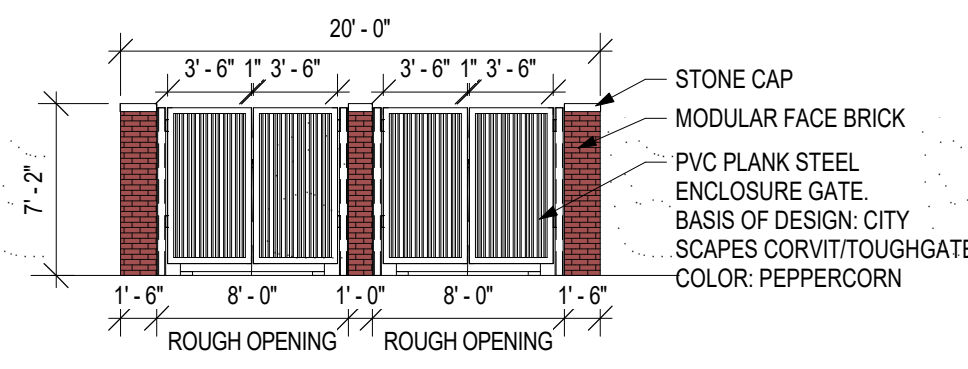
**E8 NORTH ELEVATION - TRASH ENCLOSURE**  
1/8" = 1'-0"



**D8 WEST ELEVATION - TRASH ENCLOSURE**  
1/8" = 1'-0"



**C8 SOUTH ELEVATION - TRASH ENCLOSURE**  
1/8" = 1'-0"



**A8 EAST ELEVATION - TRASH ENCLOSURE**  
1/8" = 1'-0"



**E5 ELEVATION - NORTH**  
1/8" = 1'-0"



**A5 ELEVATION - SOUTH**  
1/8" = 1'-0"



**ELLIS GLEN**  
2ND & MARKET ST.  
LEE'S SUMMIT, MO 64063  
PRELIMINARY DEVELOPMENT - UPDATED

COPYRIGHT © BY  
COLLINS WEBB  
ARCHITECTURE, LLC

REVISION DATES:

NOT FOR  
CONSTRUCTION

PROFESSIONAL SEAL

**SD202**  
ISSUE DATE: 12 JULY 2022  
COLLINS WEBB #: 21095

**EXTERIOR ELEVATIONS - NORTH  
+ SOUTH**





307B SW Market St., Lee's Summit, Missouri 64063 | 816.249.2270 | www.collinsandwebb.com

**ELLIS GLEN**  
 2ND & MARKET ST.  
 LEE'S SUMMIT, MO 64063

COPYRIGHT © BY  
 COLLINS WEBB  
 ARCHITECTURE, LLC

REVISION DATES:

NOT FOR  
 CONSTRUCTION

PROFESSIONAL SEAL

**SD301**

ISSUE DATE: 12 JULY 2022

COLLINS WEBB #: 21095

PRELIMINARY DEVELOPMENT - UPDATED

EXTERIOR PERSPECTIVES

7/12/2022 12:10:14 PM