

2 South Elevations (facing Strother) - Bldg 8
 scale: 1/8" = 1'-0"

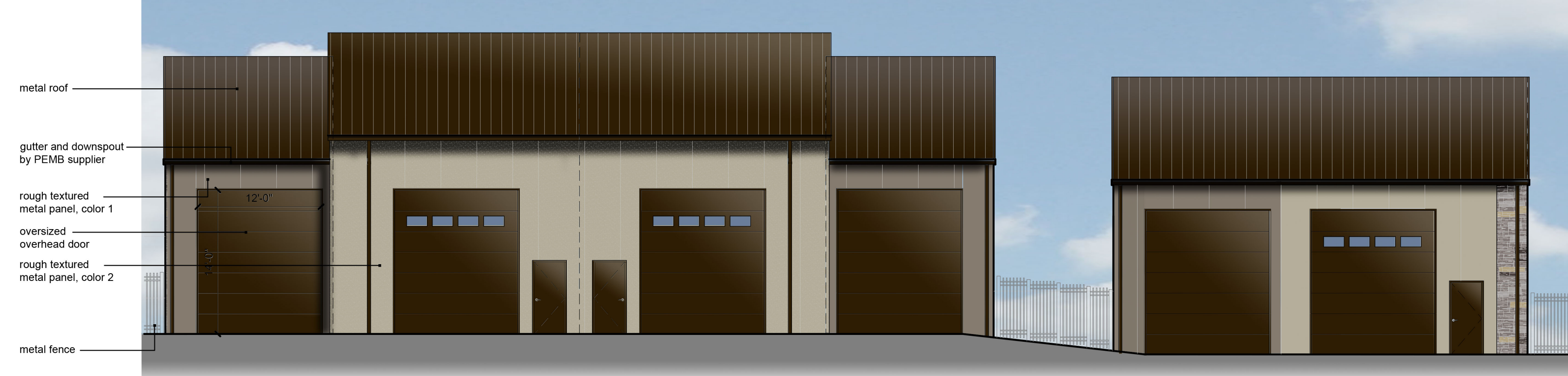
1 South Elevations (facing Strother) - Bldg 7
 scale: 1/8" = 1'-0"

Building 8 - Exterior Facade

material	area	% area
glazing	71 sf	12 %
manufactured stone	274 sf	49 %
rough textured metal panel - color 1	120 sf	22 %
rough textured metal panel - color 2	94 sf	17 %
total wall area:	555 sf	100 %

Building 7 - Exterior Facade

material	area	% area
glazing	147 sf	14 %
manufactured stone	438 sf	42 %
rough textured metal panel - color 1	158 sf	15 %
rough textured metal panel - color 2	296 sf	29 %
total wall area:	1039 sf	100 %



4 North Elevation (interior facing) - Bldg 7
 scale: 1/8" = 1'-0"

3 North Elevation (interior facing) - Bldg 8
 scale: 1/8" = 1'-0"

Building 7 - Interior Facade

material	area	% area
manufactured stone	200 sf	18 %
overhead door	420 sf	35 %
man door	48 sf	4 %
rough textured metal panel - color 1	206 sf	17 %
rough textured metal panel - color 2	308 sf	26 %
total wall area:	1182 sf	100 %

Building 8 - Interior Facade

material	area	% area
manufactured stone	97 sf	14 %
overhead door	350 sf	53 %
man door	24 sf	4 %
rough textured metal panel - color 1	45 sf	7 %
rough textured metal panel - color 2	148 sf	22 %
total wall area:	664 sf	100 %

Building 6 - Interior Facade

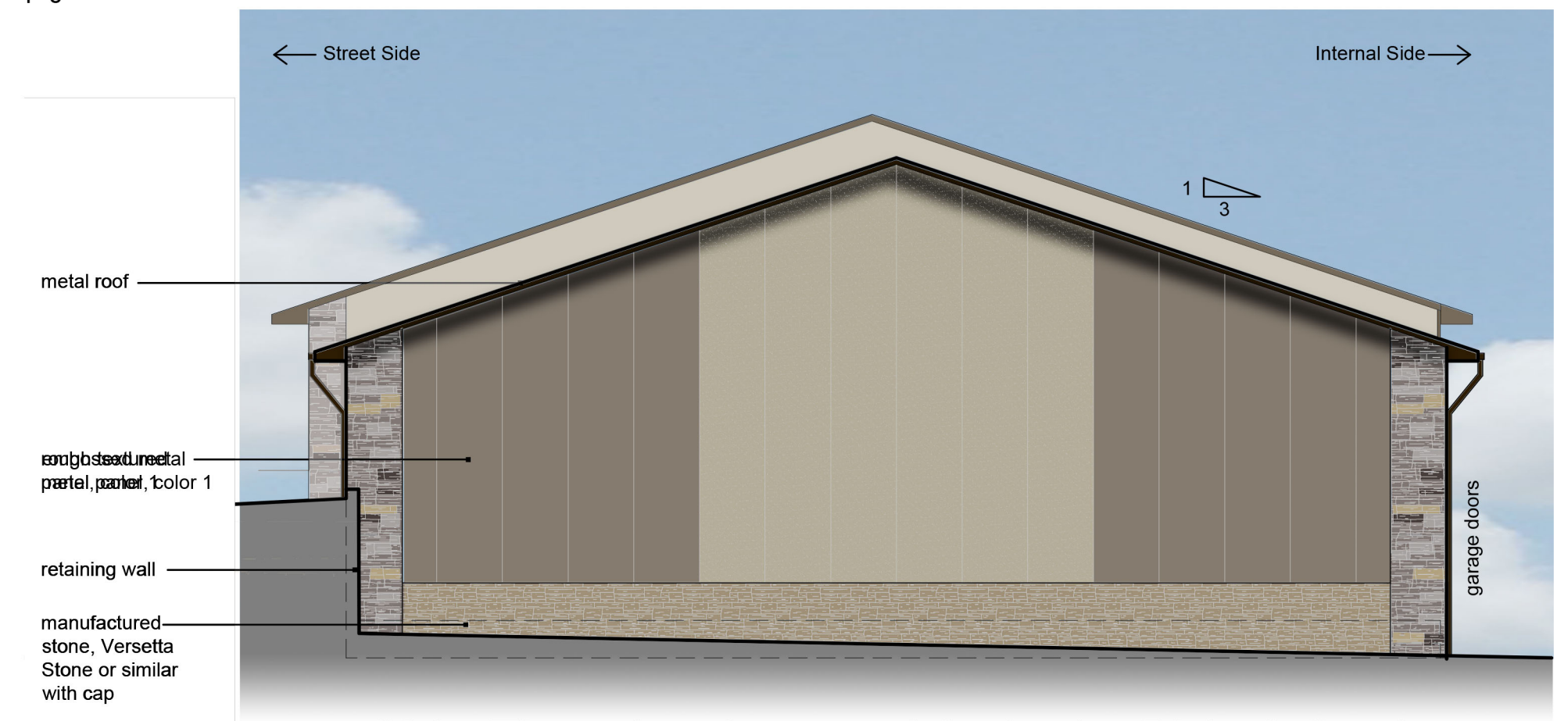
material	area	% area
manufactured stone	200 sf	18 %
overhead door	420 sf	35 %
man door	48 sf	4 %
rough textured metal panel - color 1	206 sf	17 %
rough textured metal panel - color 2	308 sf	26 %
total wall area:	1182 sf	100 %

Building 6 - Exterior Facade

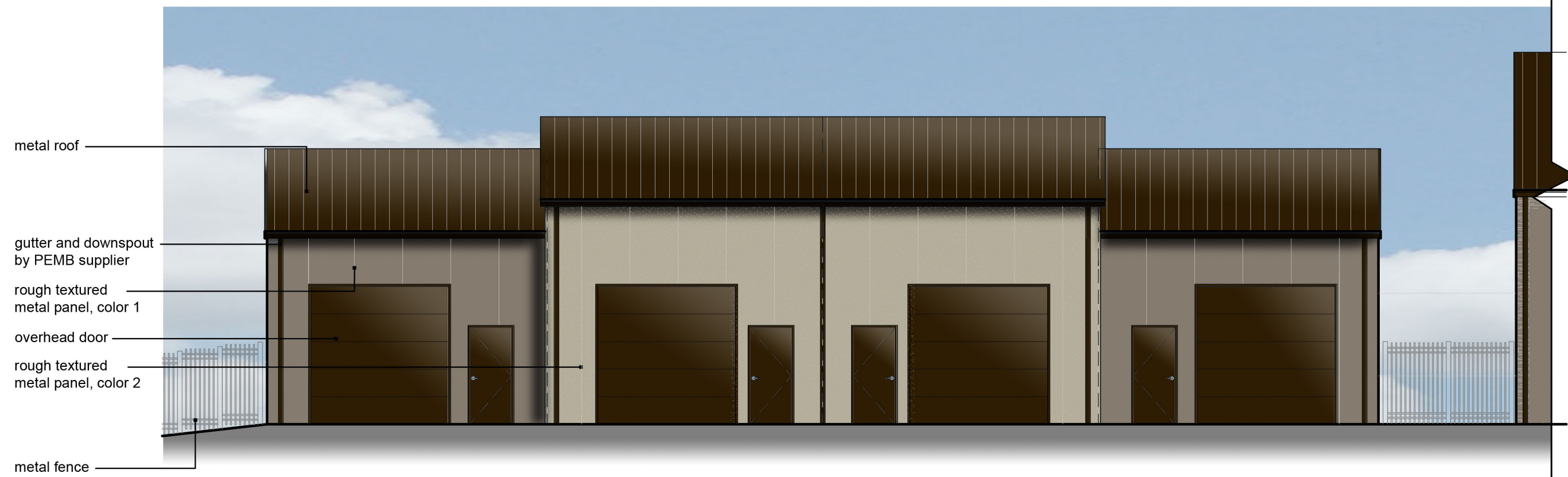
material	area	% area
glazing	82 sf	13 %
manufactured stone	216 sf	35 %
rough textured metal panel - color 1	140 sf	23 %
rough textured metal panel - color 2	176 sf	29 %
total wall area:	614 sf	100 %

Building 8/7 - Exterior Facade

material	area	% area
glazing	0 sf	0 %
manufactured stone	265 sf	22 %
rough textured metal panel - color 1	512 sf	42 %
rough textured metal panel - color 2	432 sf	36 %
total wall area:	1209 sf	100 %



5 Side Elevation (outward facing) - Bldg 8 & mir. 7
 scale: 1/8" = 1'-0"



7 Northwest Elevation (interior facing) - Bldg 6
 scale: 1/8" = 1'-0"

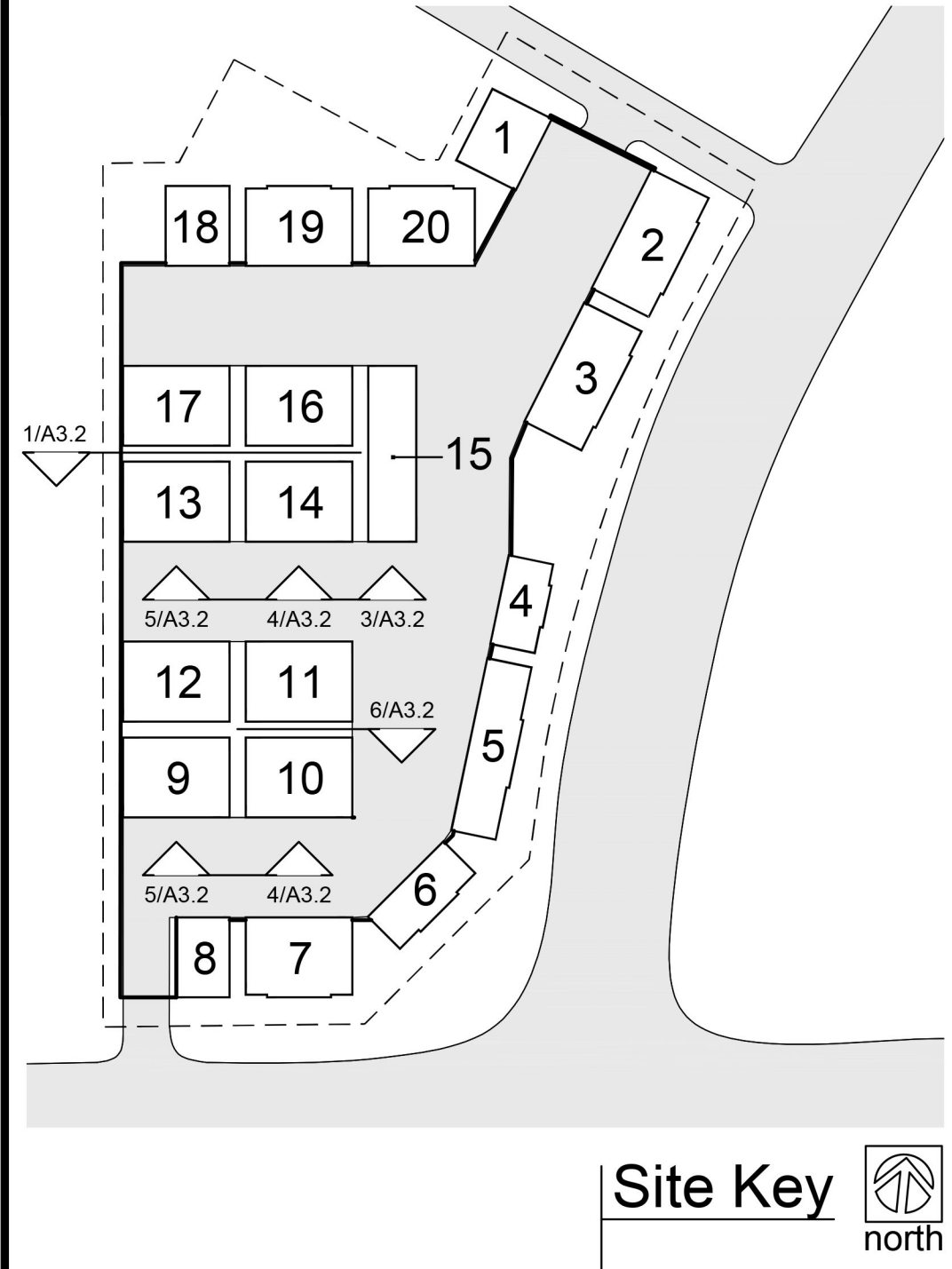


6 Southeast Elevation (facing intersection) - Bldg 6
 scale: 1/8" = 1'-0"

a new development for
Chapel Ridge Lot 7
 Chapel Ridge Business Park
 Lee's Summit, Missouri

date 05.10.2022
 drawn by DAE
 checked by DAE
 revisions

sheet number
A3.1
 drawing type preliminary
 project number 21314



1b North Elevation (interior facing) - Bldg 14
scale: 1/8" = 1'-0"

1a North Elevation (interior facing) - Bldg 9, 13
scale: 1/8" = 1'-0"

Building 10/14 - Exterior Facade

material	area	% area
glazing	102 sf	7 %
manufactured stone	0 sf	0 %
rough textured metal panel - color 1	1349 sf	93 %
rough textured metal panel - color 2	0 sf	0 %
total wall area:	1451 sf	100 %

Building 9/13 - Exterior Facade

material	area	% area
glazing	102 sf	7 %
manufactured stone	60 sf	5 %
rough textured metal panel - color 1	1289 sf	88 %
rough textured metal panel - color 2	0 sf	0 %
total wall area:	1451 sf	100 %

Building 9/13 - Interior Facade

material	area	% area
manufactured stone	596 sf	45 %
overhead door	300 sf	23 %
man door	48 sf	4 %
rough textured metal panel - color 1	90 sf	7 %
rough textured metal panel - color 2	296 sf	21 %
total wall area:	1330 sf	100 %

Building 9/13 - Interior Facade

material	area	% area
manufactured stone	596 sf	45 %
overhead door	300 sf	23 %
man door	48 sf	4 %
rough textured metal panel - color 1	90 sf	7 %
rough textured metal panel - color 2	296 sf	21 %
total wall area:	1330 sf	100 %

Building 15 - Interior Facade

material	area	% area
manufactured stone	152 sf	31 %
rough textured metal panel - color 1	338 sf	69 %
total wall area:	490 sf	100 %

Building 10 - Exterior Facade

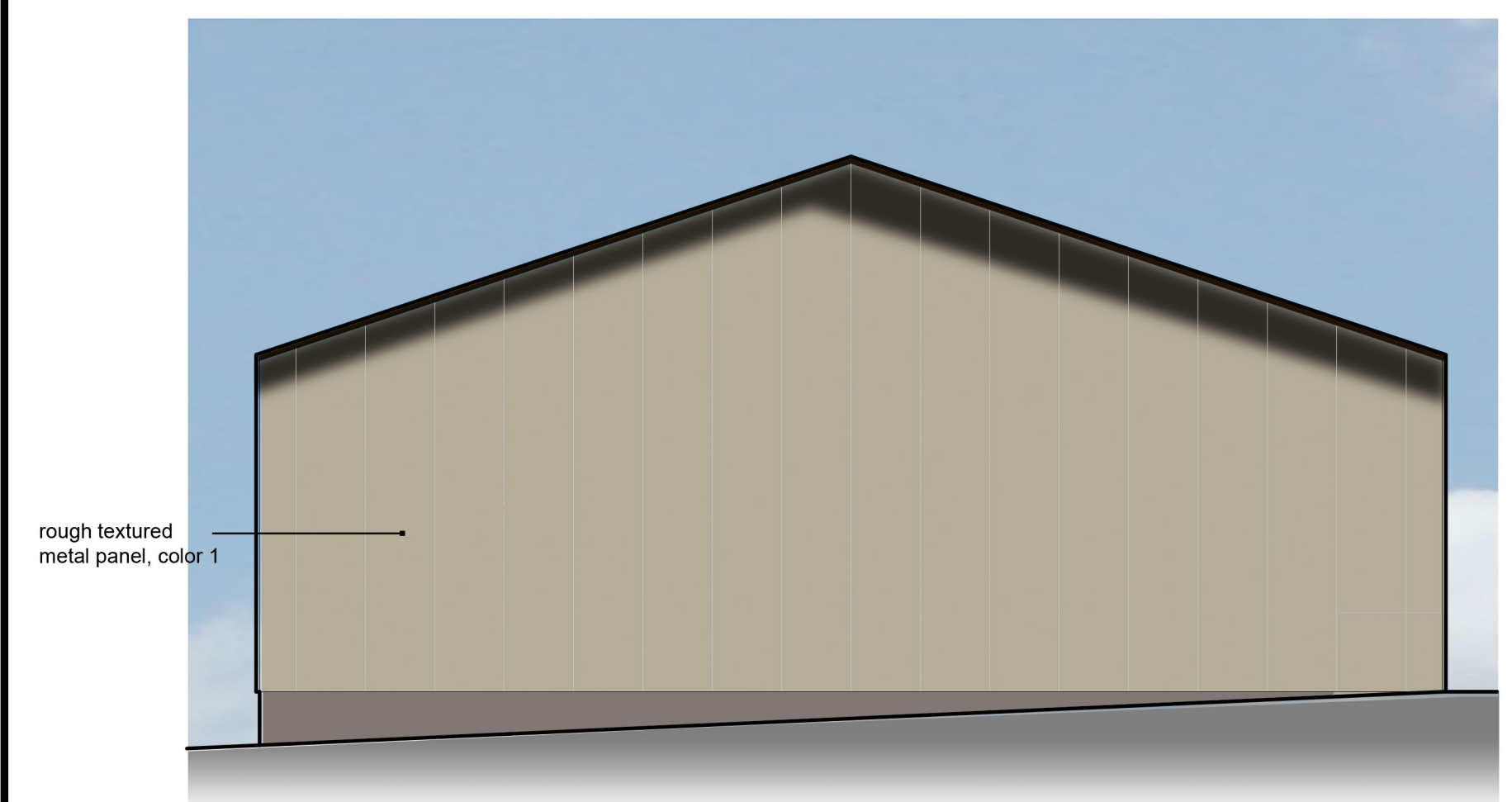
material	area	% area
glazing	102 sf	7 %
manufactured stone	66 sf	5 %
rough textured metal panel - color 1	1283 sf	88 %
rough textured metal panel - color 2	0 sf	0 %
total wall area:	1451 sf	100 %



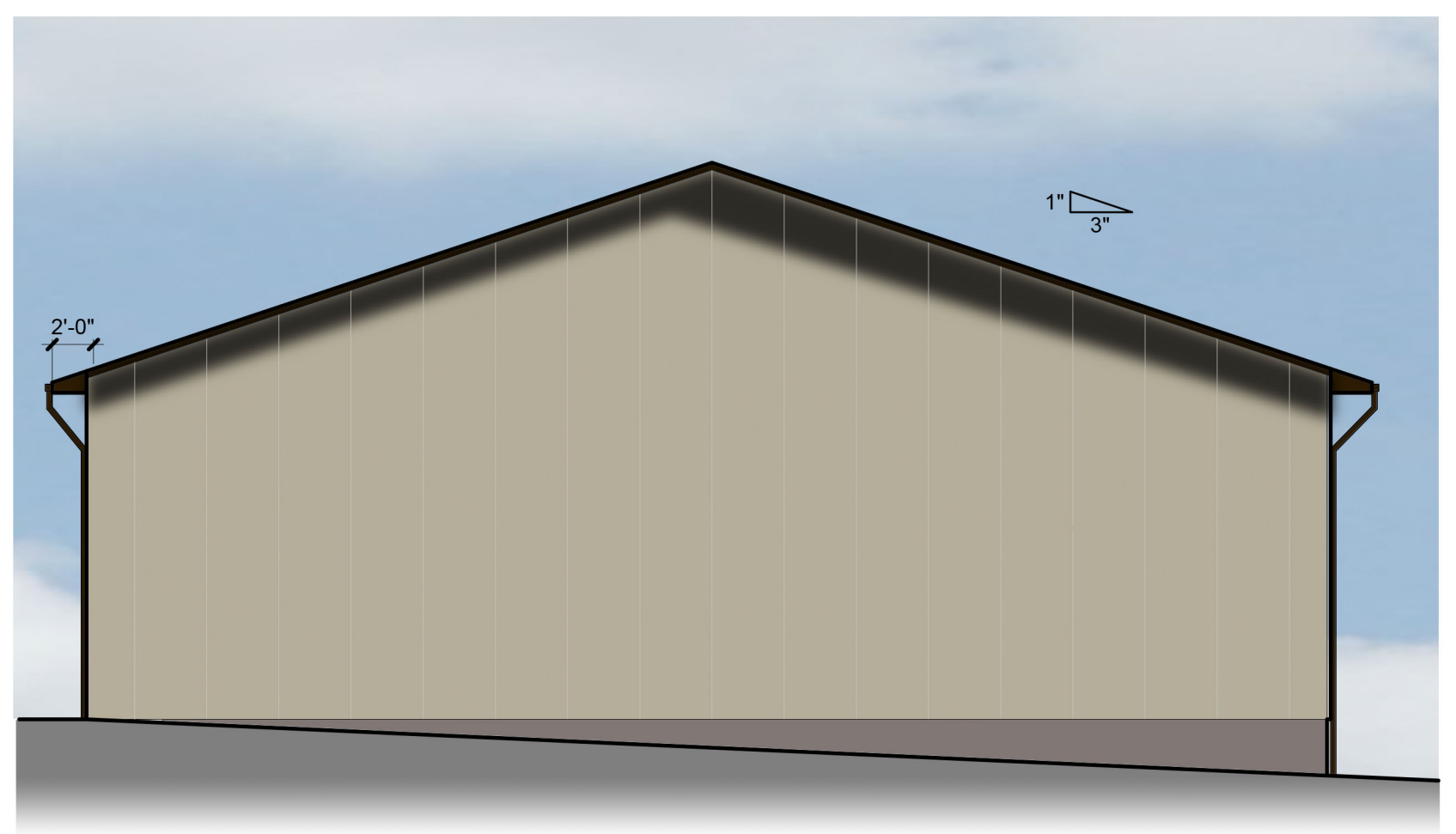
5 South Elevation (interior facing) - Bldg 9, 13 (12, 17 mirr.)
scale: 1/8" = 1'-0"

4 South Elevation (interior facing) - Bldg 10, 14 (11, 16 mirr.)
scale: 1/8" = 1'-0"

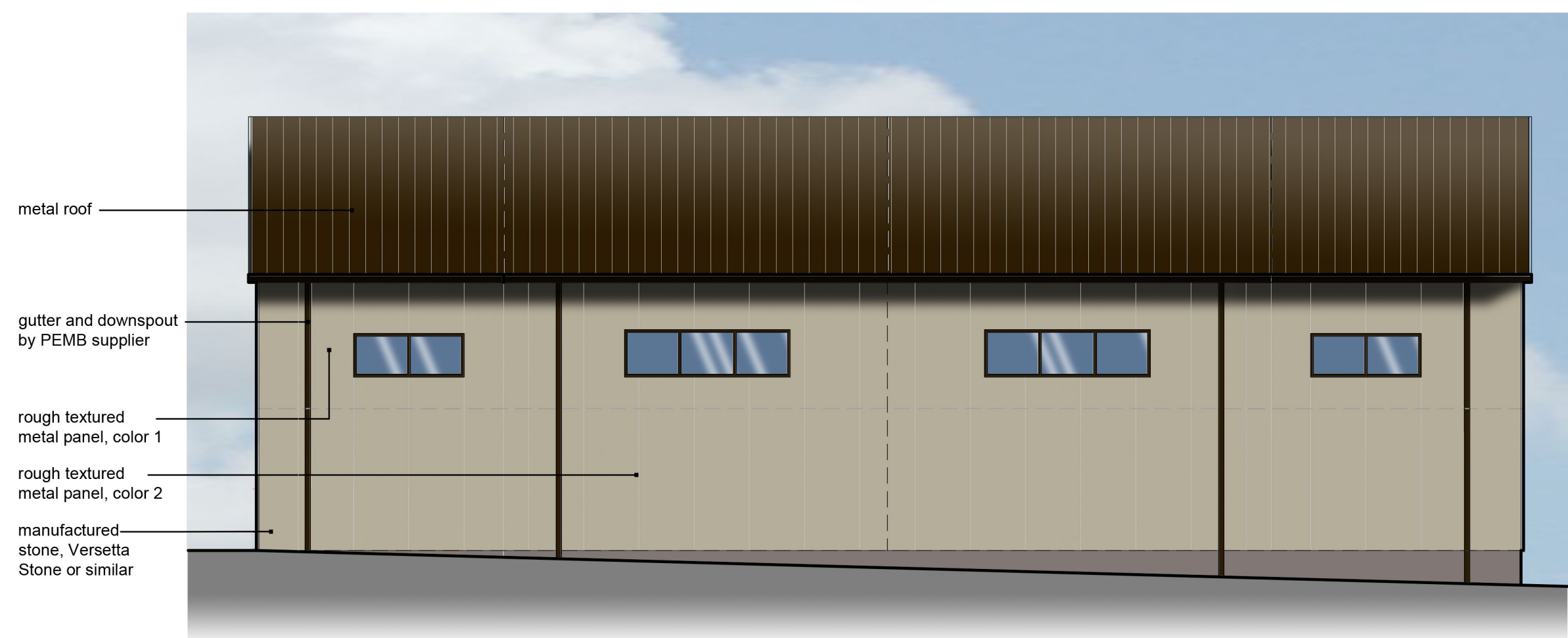
3 South Elevation (interior facing) - Bldg 15
scale: 1/8" = 1'-0"



8 West Elevation (interior facing) - Bldg 10, 14
scale: 1/8" = 1'-0"



7 East Elevation (interior facing) - Bldg 9, 13
scale: 1/8" = 1'-0"

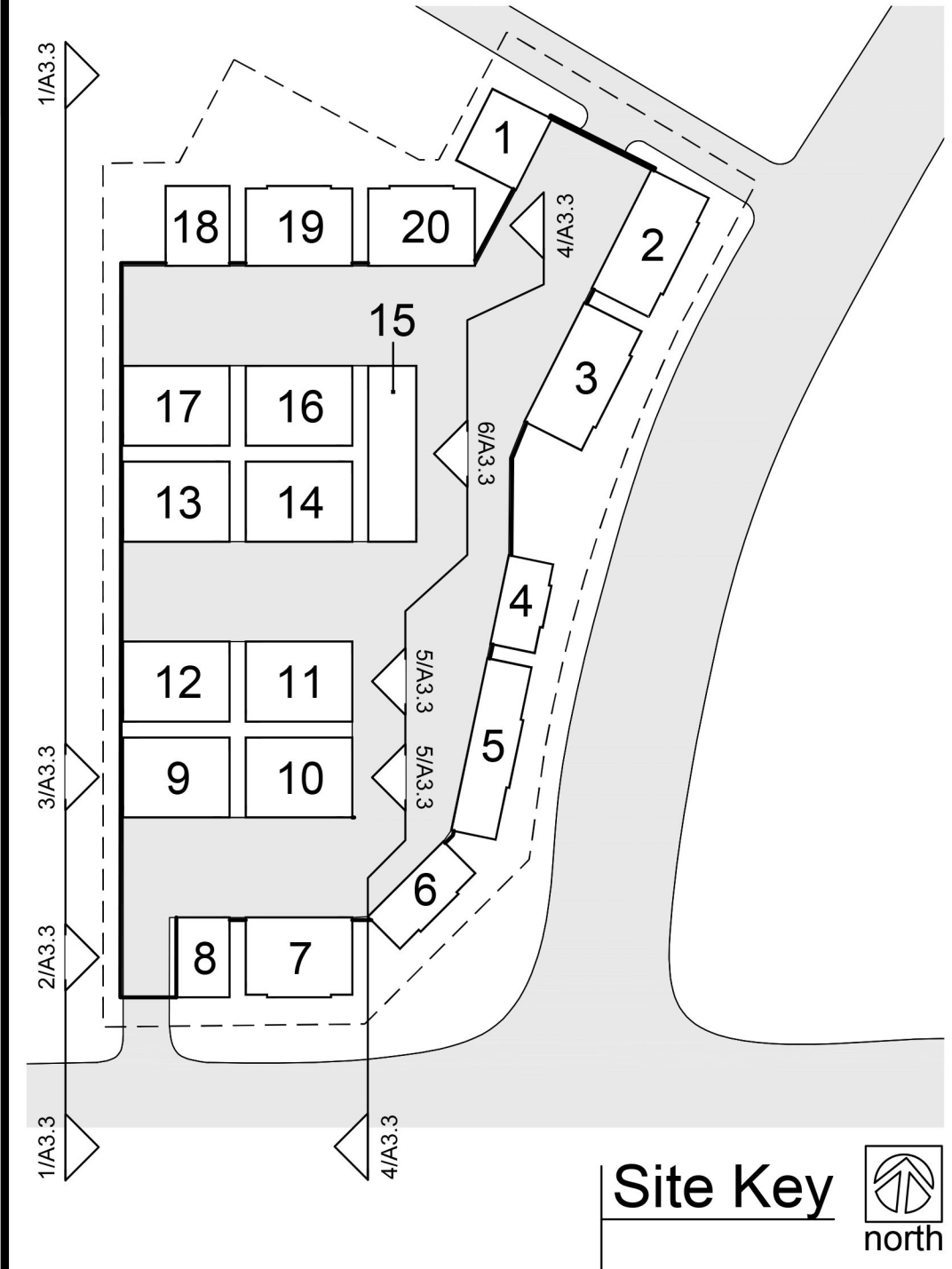


6 North Elevation (interior facing) - Bldg 10
scale: 1/8" = 1'-0"

a new development for
Chapel Ridge Lot 7
Chapel Ridge Business Park
Lee's Summit, Missouri

date
05.10.2022
drawn by
DAE
checked by
DAE
revisions

sheet number
A3.2
drawing type
preliminary
project number
21314



Building 9 - Exterior Facade

material	area	% area
manufactured stone	335 sf	26 %
glazing	32 sf	3 %
canopy	42 sf	3 %
rough textured metal panel - color 1	512 sf	40 %
rough textured metal panel - color 2	357 sf	28 %
total wall area:	1278 sf	100 %

Building 8 - Exterior Facade

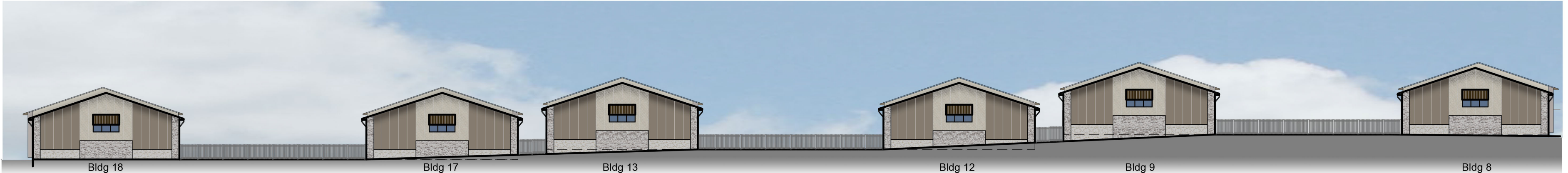
material	area	% area
manufactured stone	335 sf	26 %
glazing	32 sf	3 %
canopy	42 sf	3 %
rough textured metal panel - color 1	512 sf	40 %
rough textured metal panel - color 2	357 sf	28 %
total wall area:	1278 sf	100 %

Building 15 - Interior Facade

material	area	% area
manufactured stone	205 sf	10 %
overhead door	735 sf	40 %
man door	72 sf	4 %
rough textured metal panel - color 1	512 sf	28 %
rough textured metal panel - color 2	326 sf	18 %
total wall area:	1850 sf	100 %

Building 11/10 - Interior Facade

material	area	% area
glazing	0 sf	0 %
manufactured stone	305 sf	24 %
rough textured metal panel - color 1	600 sf	46 %
rough textured metal panel - color 2	390 sf	30 %
total wall area:	1295 sf	100 %



1 Overall West Elevation
scale: 1/32" = 1'-0"



3 West Elevation (exterior facing) - Bldg 9
scale: 1/8" = 1'-0"



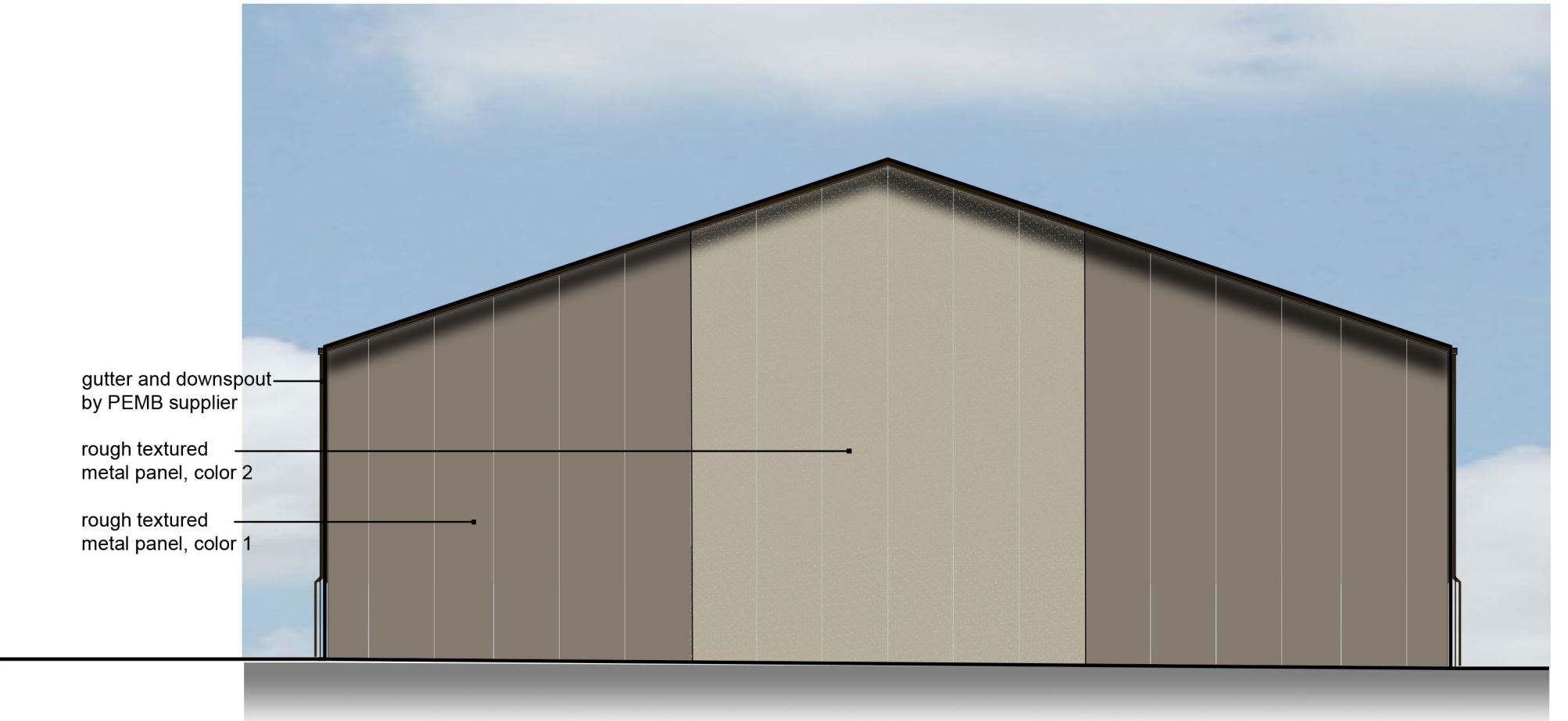
2 West Elevation (exterior facing) - Bldg 8
scale: 1/8" = 1'-0"



4 East Section Elevation (interior facing)
scale: 1/32" = 1'-0"



6 East Elevation (interior facing) - Bldg 15
scale: 1/8" = 1'-0"

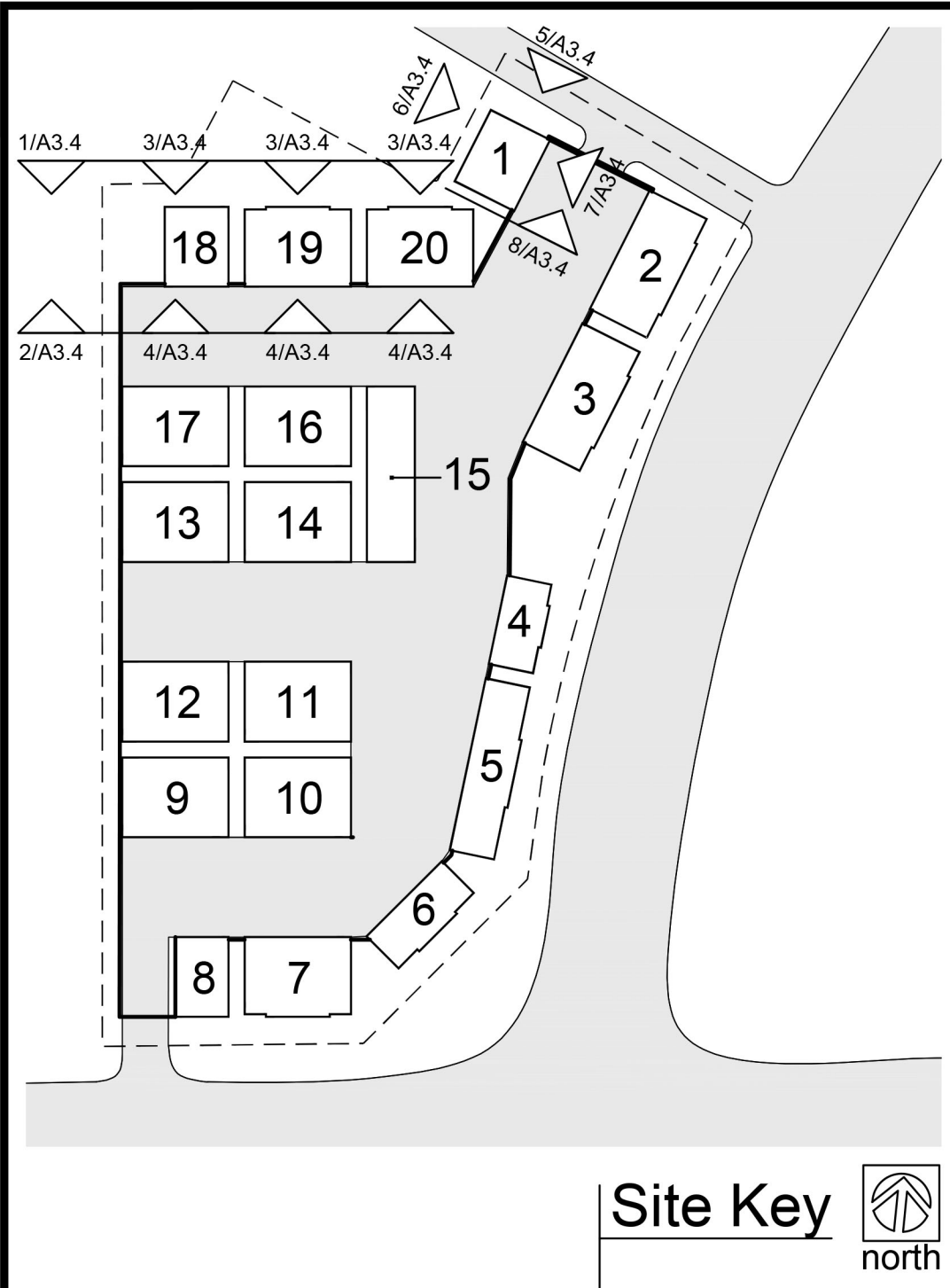


5 East Elevation (interior facing) - Bldg 10,11
scale: 1/8" = 1'-0"

a new development for
Chapel Ridge Lot 7
Chapel Ridge Business Park
Lee's Summit, Missouri

date
05.10.2022
drawn by
DAE
checked by
DAE
revisions

sheet number
A3.3
drawing type
preliminary
project number
21314



Building 1 - Interior Facade

material	area	% area
manufactured stone	275 sf	36 %
glazing	137 sf	18 %
canopy	0 sf	0 %
rough textured metal panel - color 1	186 sf	24 %
rough textured metal panel - color 2	158 sf	22 %
total wall area:	756 sf	100 %

Building 1 - Exterior Facade

material	area	% area
manufactured stone	323 sf	40 %
glazing	246 sf	30 %
canopy	36 sf	4 %
rough textured metal panel - color 1	47 sf	5 %
rough textured metal panel - color 2	158 sf	21 %
total wall area:	810 sf	100 %

Building 1 - Interior Facade

material	area	% area
manufactured stone	280 sf	30 %
glazing	87 sf	9 %
canopy	0 sf	0 %
rough textured metal panel - color 1	0 sf	0 %
rough textured metal panel - color 2	592 sf	61 %
total wall area:	949 sf	100 %

Building 1 - Exterior Facade

material	area	% area
manufactured stone	361 sf	45 %
glazing	181 sf	22 %
canopy	98 sf	10 %
rough textured metal panel - color 1	0 sf	0 %
rough textured metal panel - color 2	170 sf	23 %
total wall area:	810 sf	100 %



1 North Elevation (exterior facing) - Bldg 18,19,20
scale: 1/16" = 1'-0"



2 South Elevation (interior facing) - Bldg 18,19,20
scale: 1/16" = 1'-0"



6 West Elevation (exterior facing) - Bldg 1
scale: 1/8" = 1'-0"

Building 19/20 - Exterior Facade

material	area	% area
glazing	109 sf	8 %
manufactured stone	610 sf	45 %
rough textured metal panel - color 1	290 sf	22 %
rough textured metal panel - color 2	339 sf	25 %
total wall area:	1348 sf	100 %

Building 19/20 - Interior Facade

material	area	% area
manufactured stone	226 sf	15 %
overhead door	696 sf	47 %
man door	48 sf	3 %
rough textured metal panel - color 1	104 sf	7 %
rough textured metal panel - color 2	408 sf	28 %
total wall area:	1482 sf	100 %



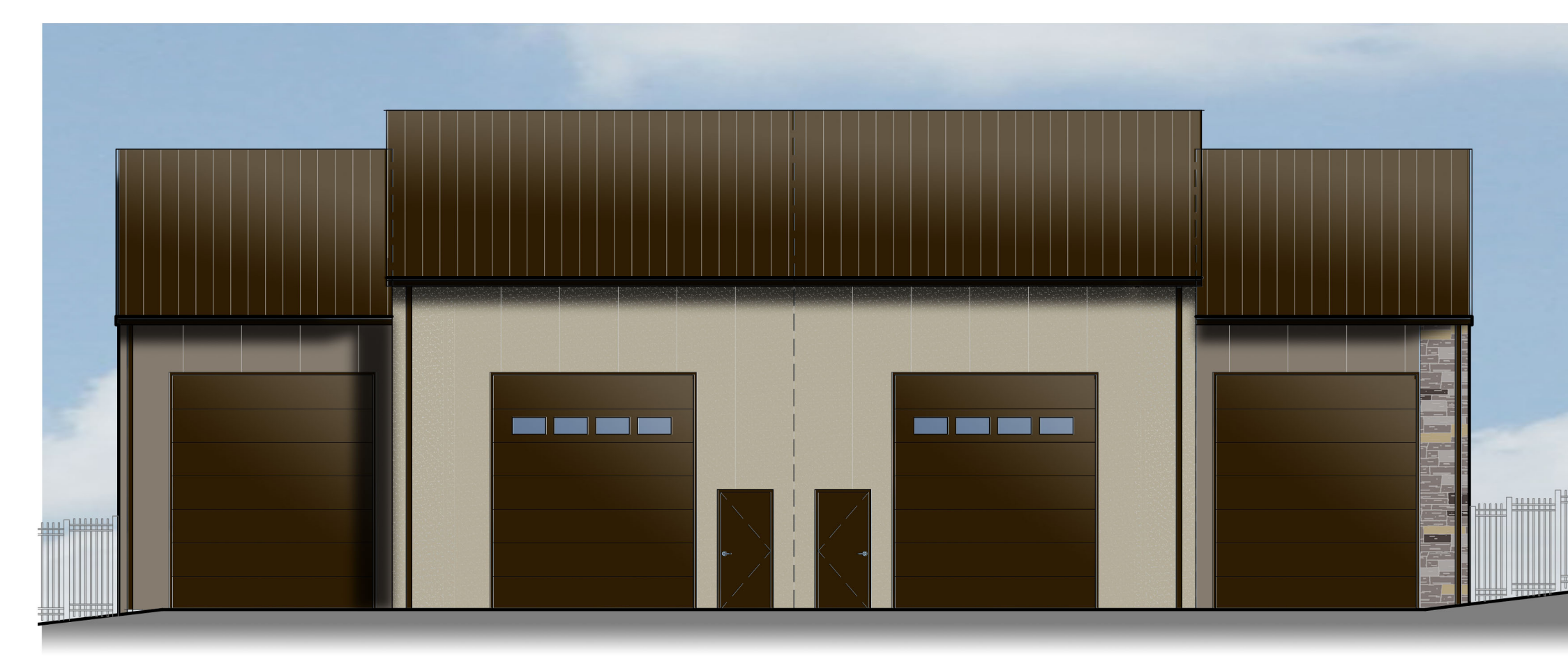
3 North Elevation (exterior facing) - Bldg 19, 20
scale: 1/8" = 1'-0"



7 East Elevation (exterior facing) - Bldg 1
scale: 1/8" = 1'-0"



5 North Elevation (exterior facing) - Bldg 1
scale: 1/8" = 1'-0"



4 South Elevation (interior facing) - Bldg 19
scale: 1/8" = 1'-0"

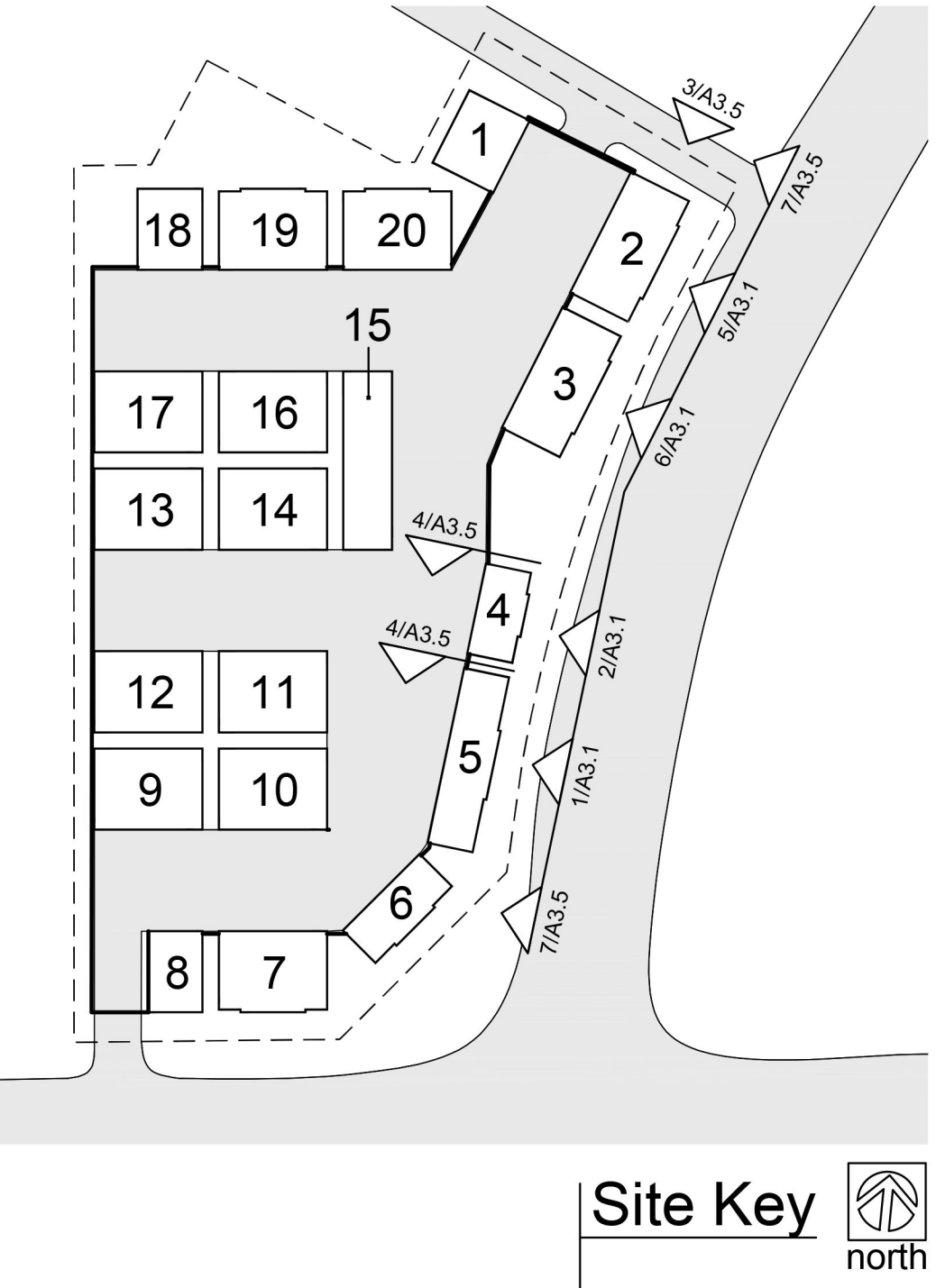


8 South Elevation (interior facing) - Bldg 1
scale: 1/8" = 1'-0"

a new development for
Chapel Ridge Lot 7
Chapel Ridge Business Park
Lee's Summit, Missouri

date
05.10.2022
drawn by
DAE
checked by
DAE
revisions

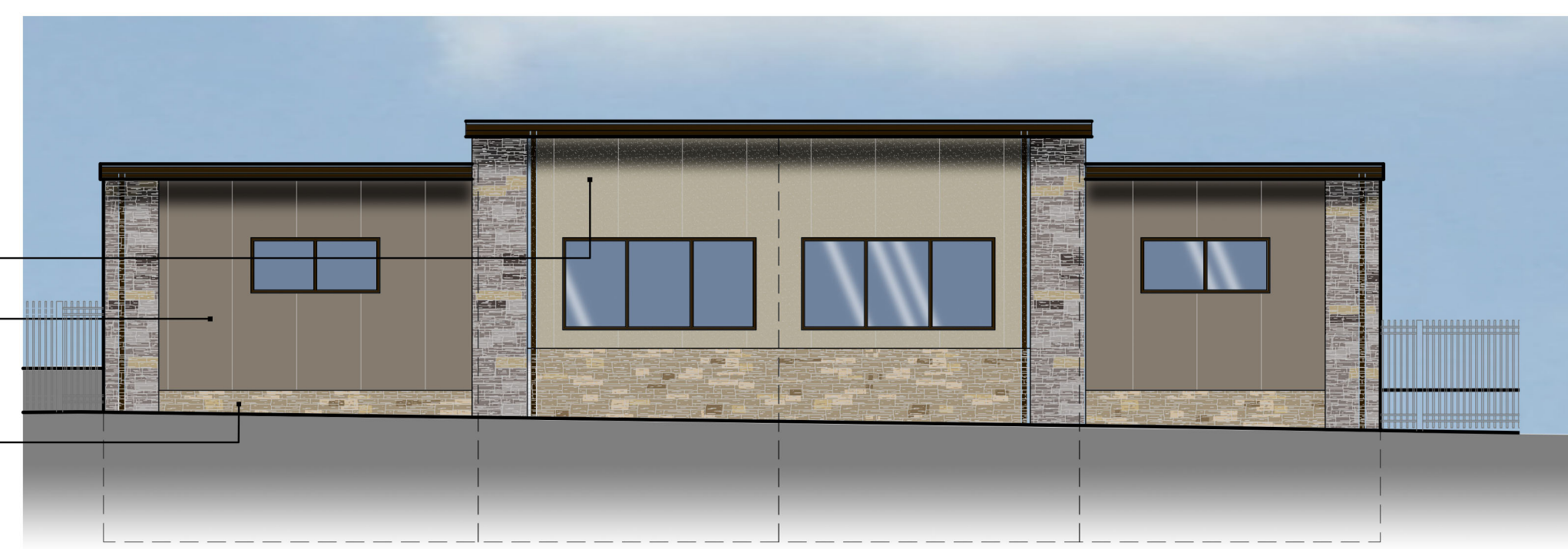
sheet number
A3.4
drawing type
preliminary
project number
21314



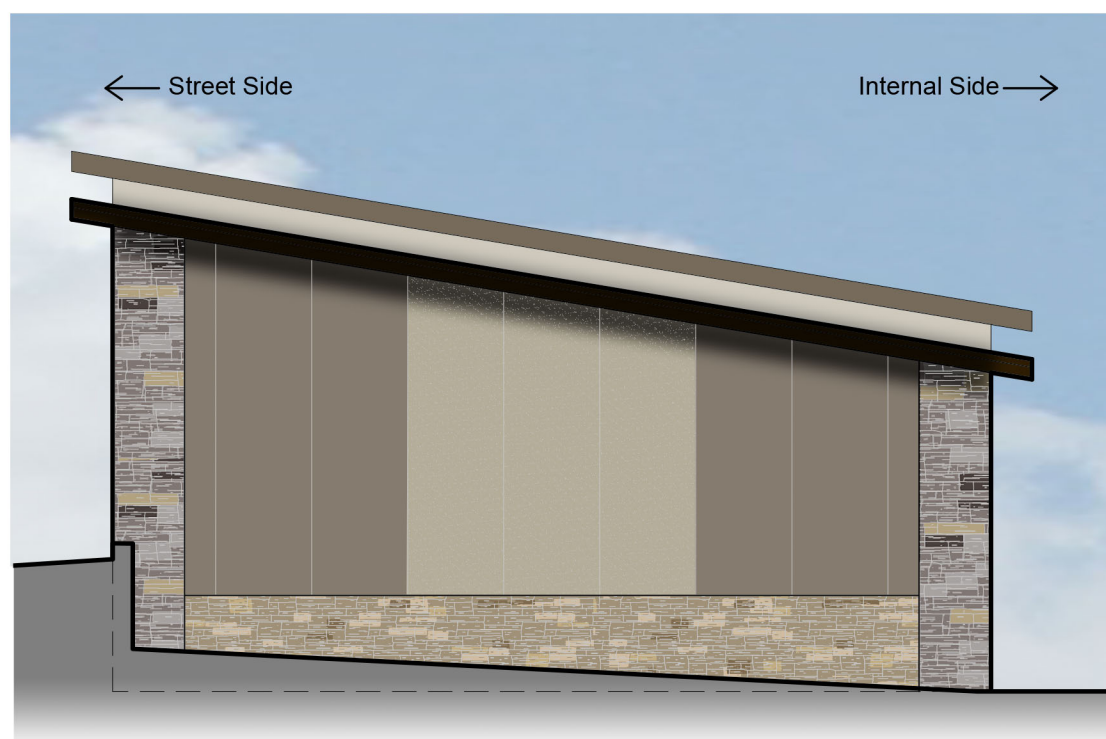
1 East Elevation (facing Ralph Powell) - Bldg 5
scale: 1/8" = 1'-0"



3 North Elevation (exterior facing) - Bldg 2
scale: 1/8" = 1'-0"



2 East Elevation (facing Ralph Powell) - Bldg 4
scale: 1/8" = 1'-0"



4 Side Elevation (interior facing) - Bldg 4/5
scale: 1/8" = 1'-0"

Building 3 - Exterior Facade

material	area	% area
glazing	298 sf	24 %
manufactured stone	379 sf	32 %
rough textured metal panel - color 1	164 sf	14 %
rough textured metal panel - color 2	353 sf	30 %
total wall area:	1194 sf	100 %

Building 2 - Exterior Facade

material	area	% area
glazing	298 sf	24 %
manufactured stone	379 sf	32 %
rough textured metal panel - color 1	164 sf	14 %
rough textured metal panel - color 2	353 sf	30 %
total wall area:	1194 sf	100 %

Building 4 - Exterior Facade

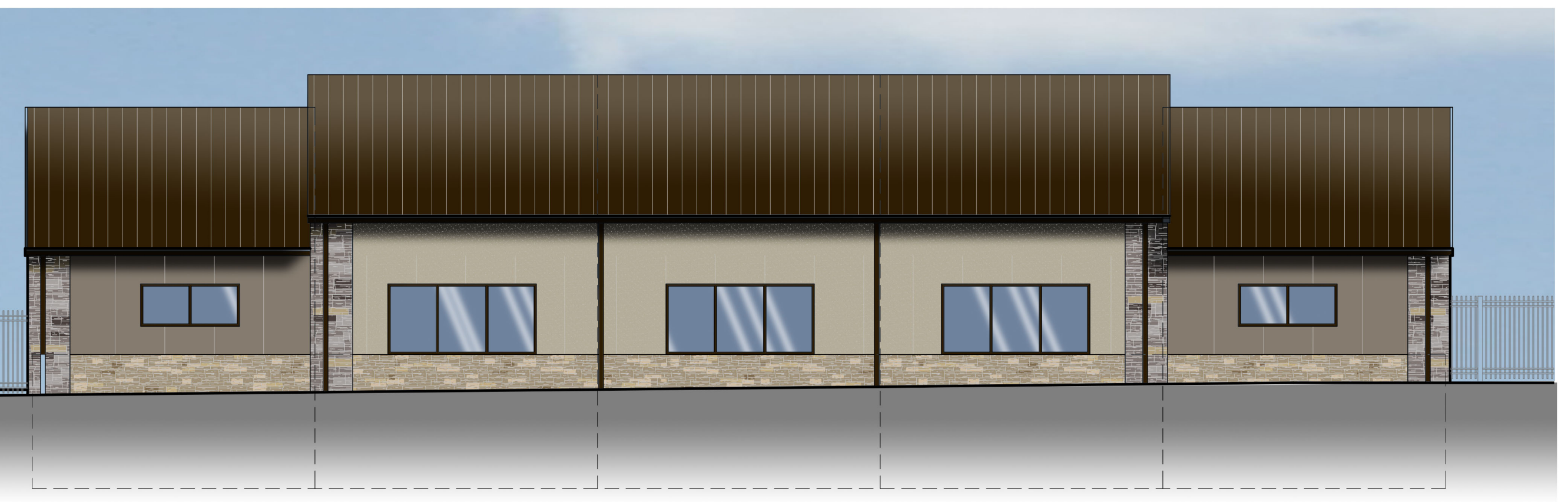
material	area	% area
glazing	193 sf	19 %
manufactured stone	330 sf	33 %
rough textured metal panel - color 1	254 sf	26 %
rough textured metal panel - color 2	209 sf	22 %
total wall area:	986 sf	100 %

Building 5 - Exterior Facade

material	area	% area
glazing	146 sf	12 %
manufactured stone	457 sf	37 %
rough textured metal panel - color 1	386 sf	31 %
rough textured metal panel - color 2	237 sf	20 %
total wall area:	1226 sf	100 %



6 East Elevation (facing Ralph Powell) - Bldg 3
scale: 1/8" = 1'-0"



5 East Elevation (facing Ralph Powell) - Bldg 2
scale: 1/8" = 1'-0"

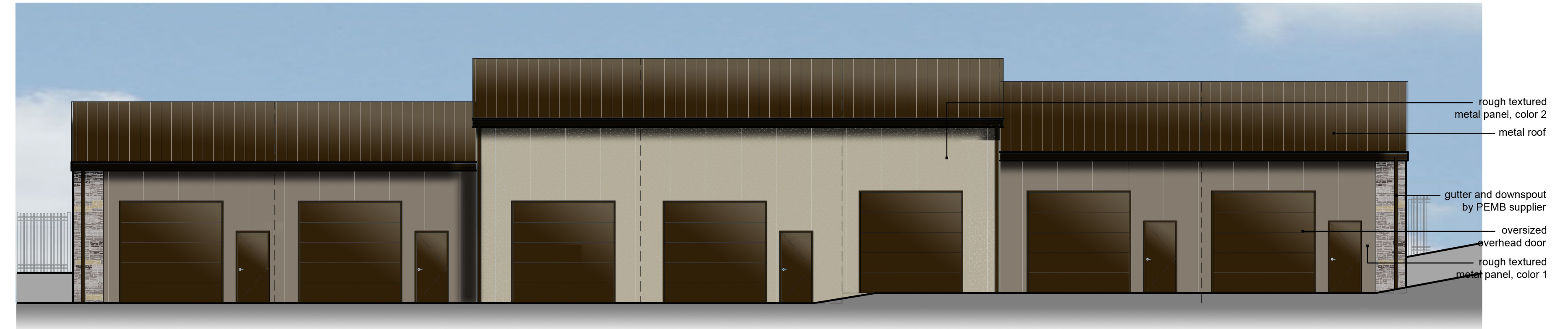
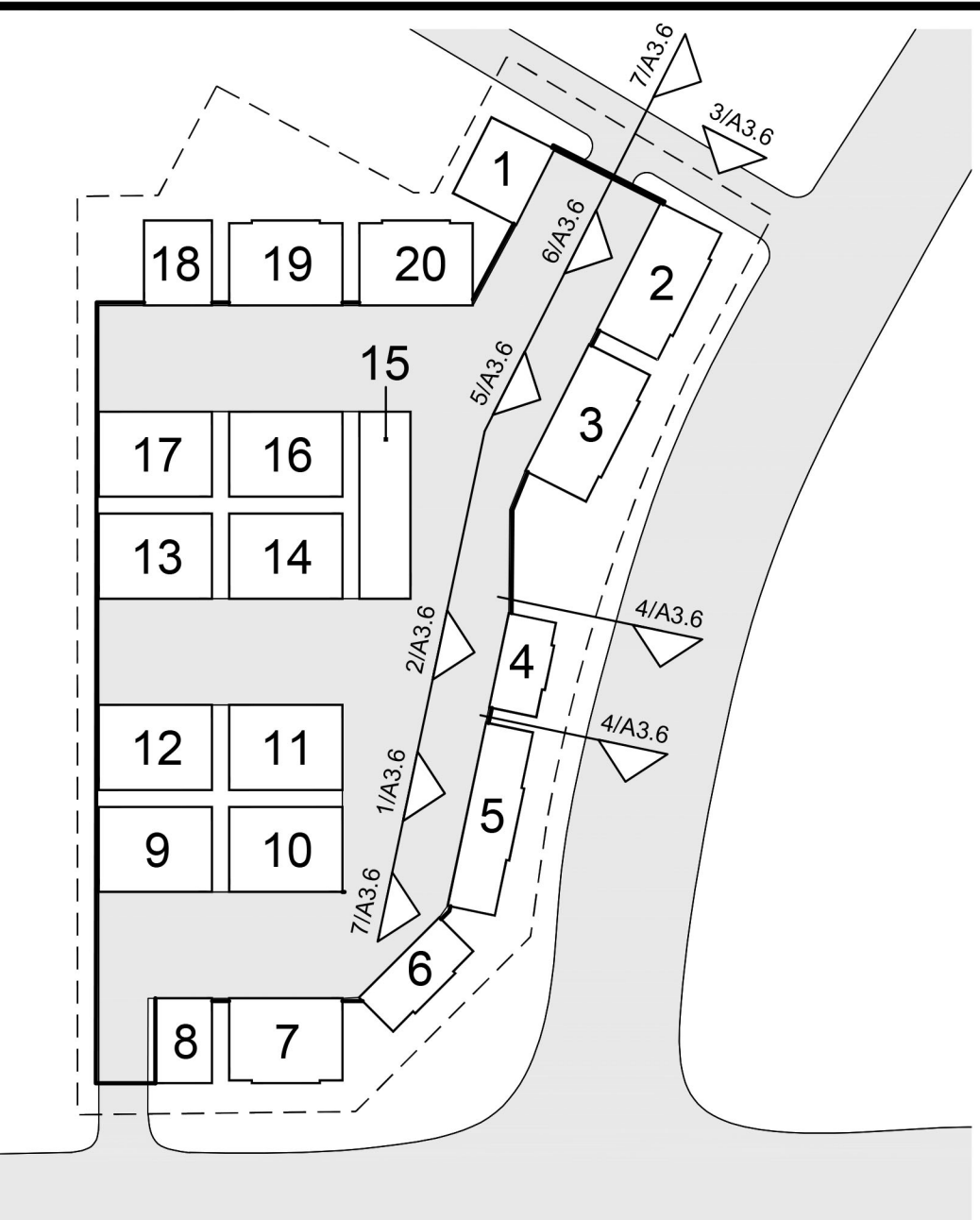


7 Overall Elevation East (facing Ralph Powell)
scale: 1/16" = 1'-0"

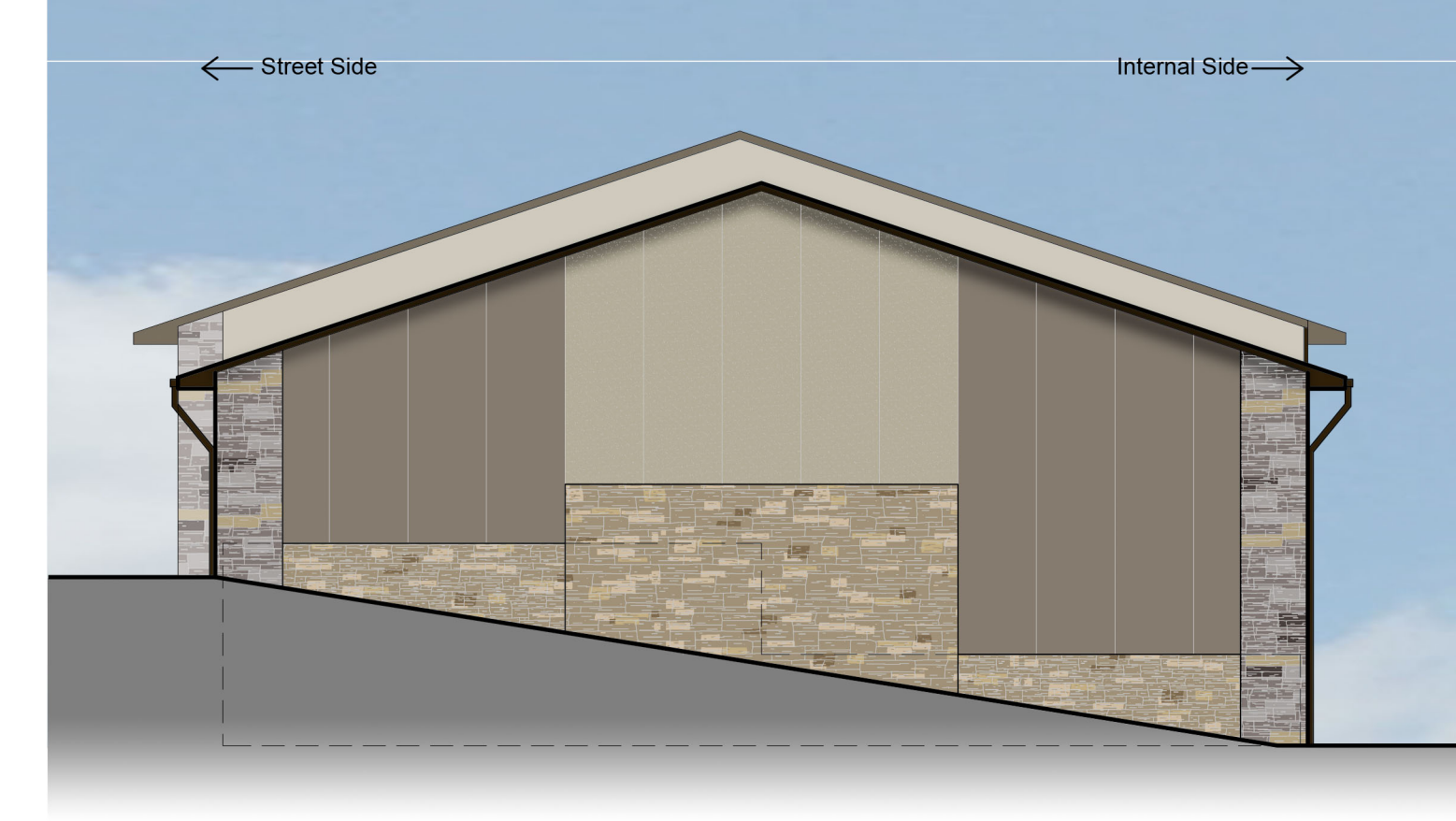
a new development for
Chapel Ridge Lot 7
Chapel Ridge Business Park
Lee's Summit, Missouri

date
05.10.2022
drawn by
DAE
checked by
DAE
revisions

sheet number
A3.5
drawing type
preliminary
project number
21314



1 West Elevation (interior facing) - Bldg 5
scale: 1/8" = 1'-0"



3 North Elevation (exterior facing) - Bldg 2
scale: 1/8" = 1'-0"



2 West Elevation (interior facing) - Bldg 4
scale: 1/8" = 1'-0"



4 Side Elevation (interior facing) - Bldg 4/5
scale: 1/8" = 1'-0"

Building 2 - Interior Facade

material	area	% area
manufactured stone	212 sf	12 %
overhead door	870 sf	48 %
man door	0 sf	0 %
embossed metal panel - color 1	212 sf	12 %
embossed metal panel - color 2	506 sf	28 %
total wall area:	1801 sf	100 %

Building 3 - Interior Facade

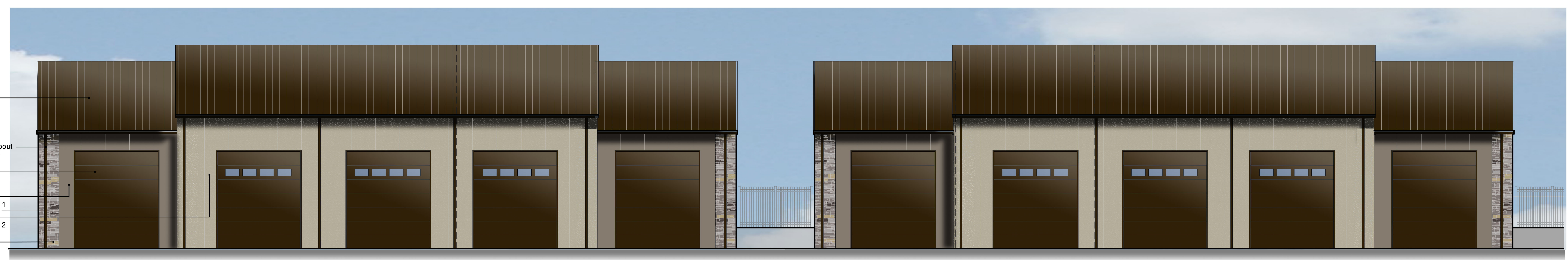
material	area	% area
manufactured stone	212 sf	12 %
overhead door	870 sf	48 %
man door	0 sf	0 %
embossed metal panel - color 1	212 sf	12 %
rough textured metal panel - color 2	506 sf	28 %
total wall area:	1801 sf	100 %

Building 4 - Interior Facade

material	area	% area
manufactured stone	118 sf	13 %
overhead door	420 sf	42 %
man door	24 sf	2 %
embossed metal panel - color 1	140 sf	14 %
embossed metal panel - color 2	286 sf	29 %
total wall area:	988 sf	100 %

Building 5 - Interior Facade

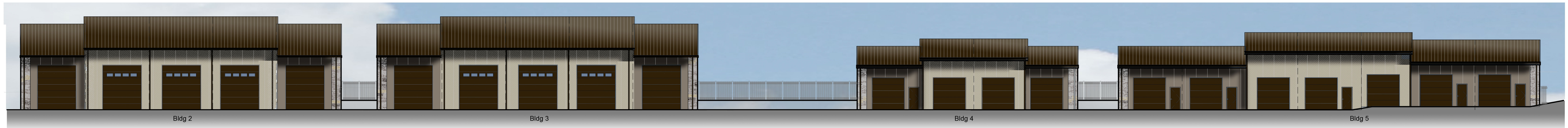
material	area	% area
manufactured stone	62 sf	4 %
overhead door	735 sf	38 %
man door	120 sf	6 %
embossed metal panel - color 1	474 sf	24 %
embossed metal panel - color 2	559 sf	28 %
total wall area:	1950 sf	100 %



6 West Elevation (interior facing) - Bldg 2
scale: 1/8" = 1'-0"



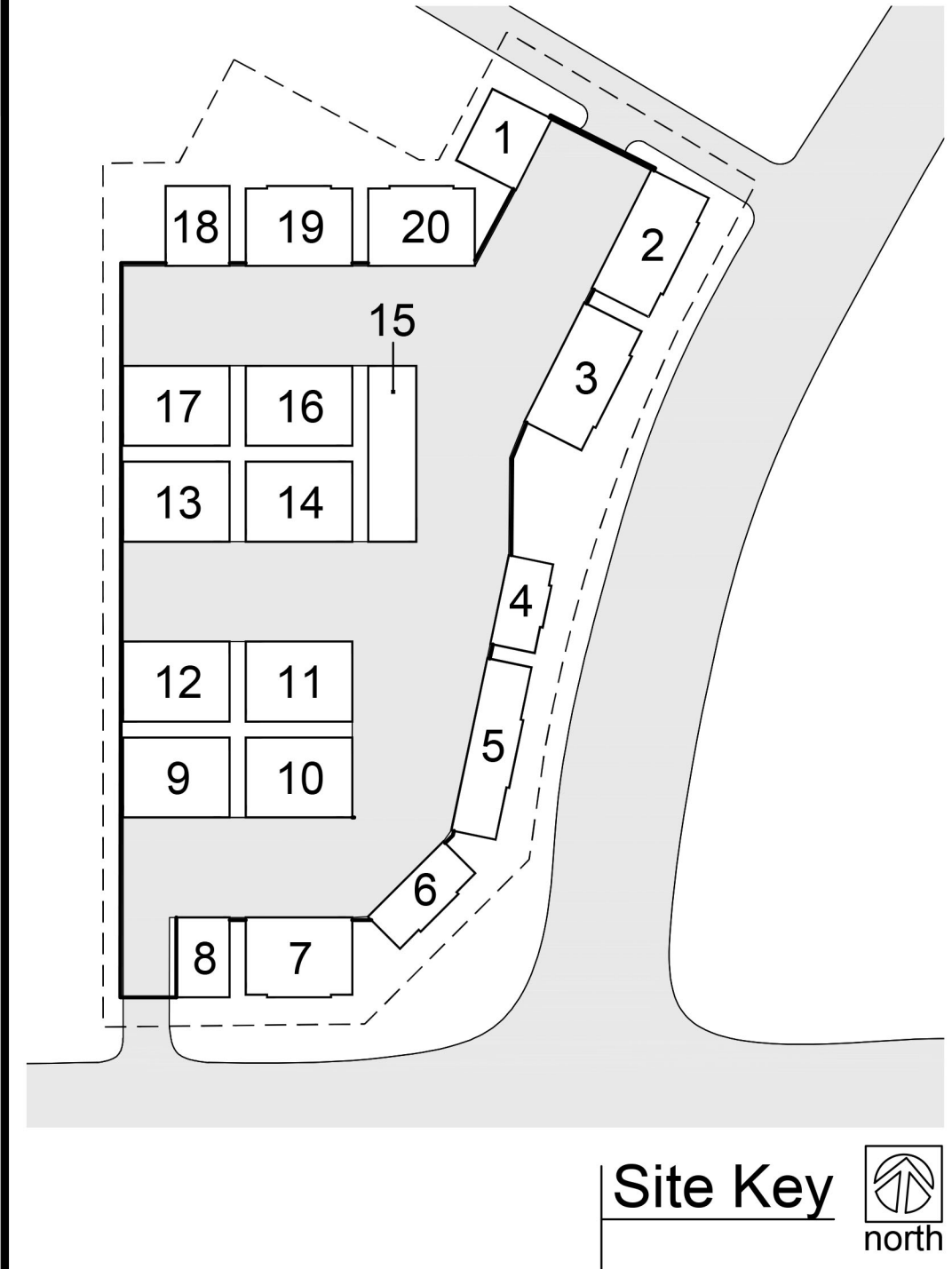
5 West Elevation (interior facing) - Bldg 3
scale: 1/8" = 1'-0"



7 Overall West Elevation (interior facing)
scale: 1/16" = 1'-0"

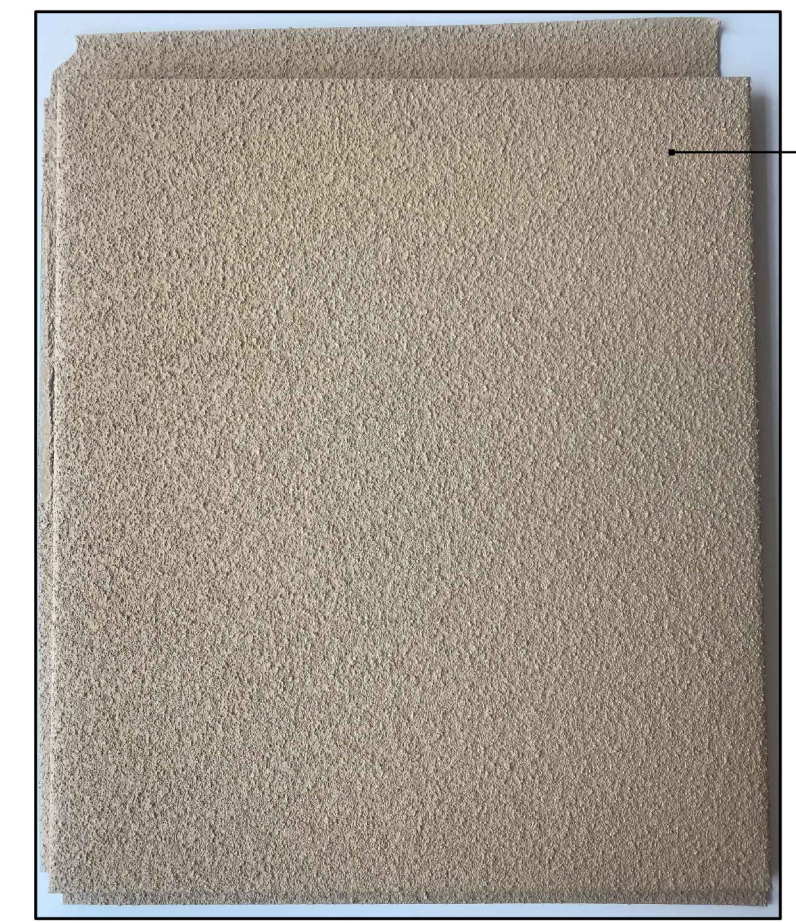
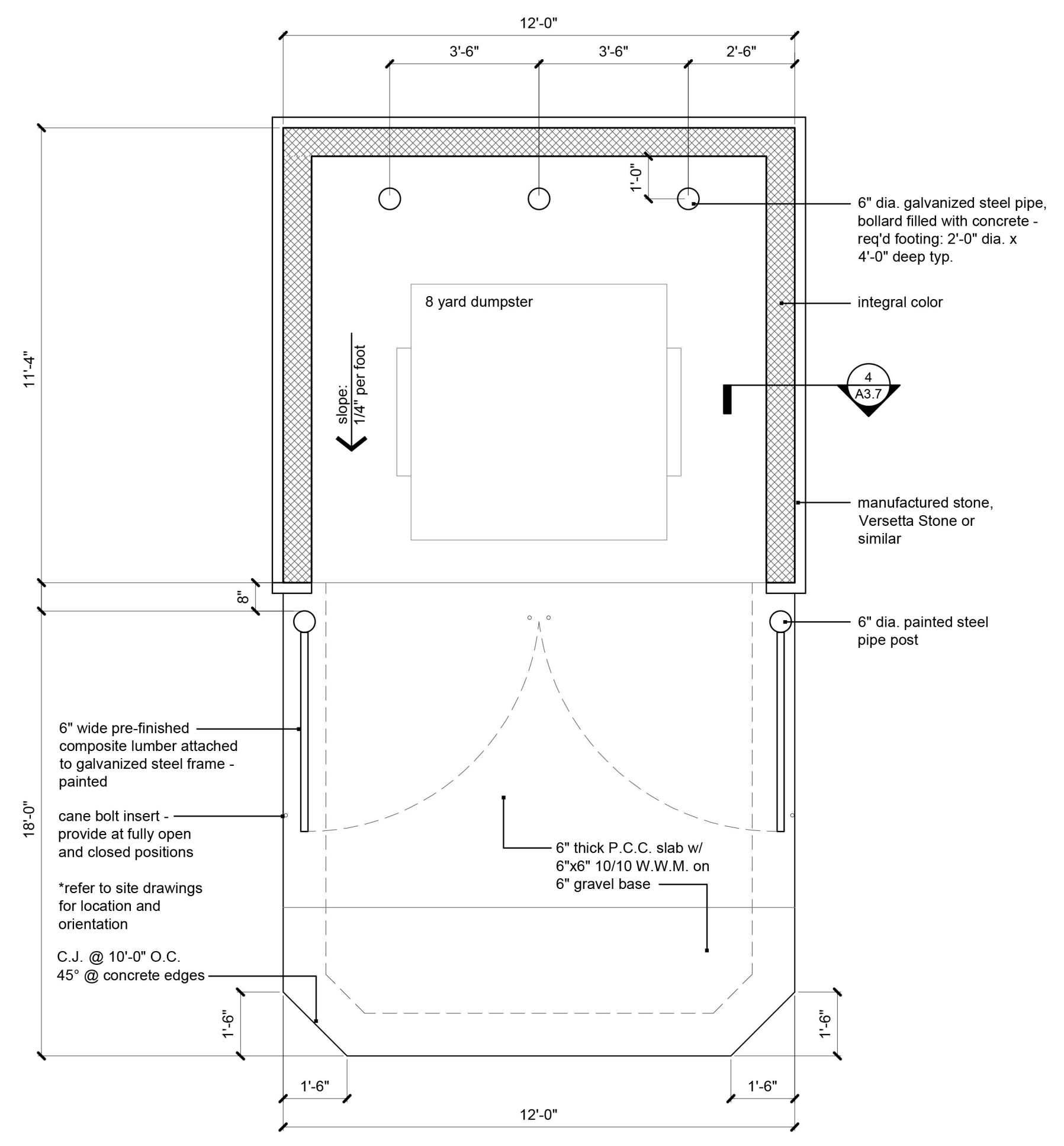
a new development for
Chapel Ridge Lot 7
Chapel Ridge Business Park
Lee's Summit, Missouri

date
05.10.2022
drawn by
DAE
checked by
DAE
revisions



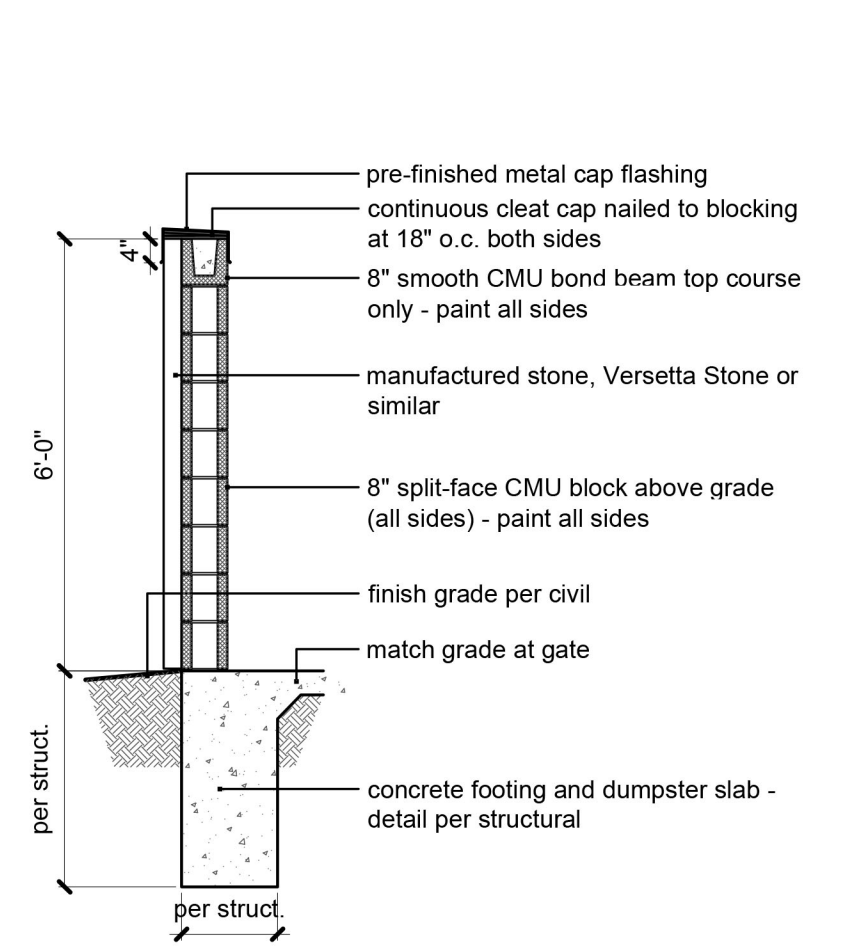
Project Data Table

Building	sq ft
Bldg 1	3000
Bldg 2	4920
Bldg 3	4920
Bldg 4	3072
Bldg 5	4592
Bldg 6	2800
Bldg 7	4736
Bldg 8	2880
Bldg 9	4800
Bldg 10	4800
Bldg 11	4800
Bldg 12	4800
Bldg 13	4800
Bldg 14	4800
Bldg 15	4752
Bldg 16	4800
Bldg 17	4800
Bldg 18	2880
Bldg 19	4800
Bldg 20	4800
total sq ft:	86552

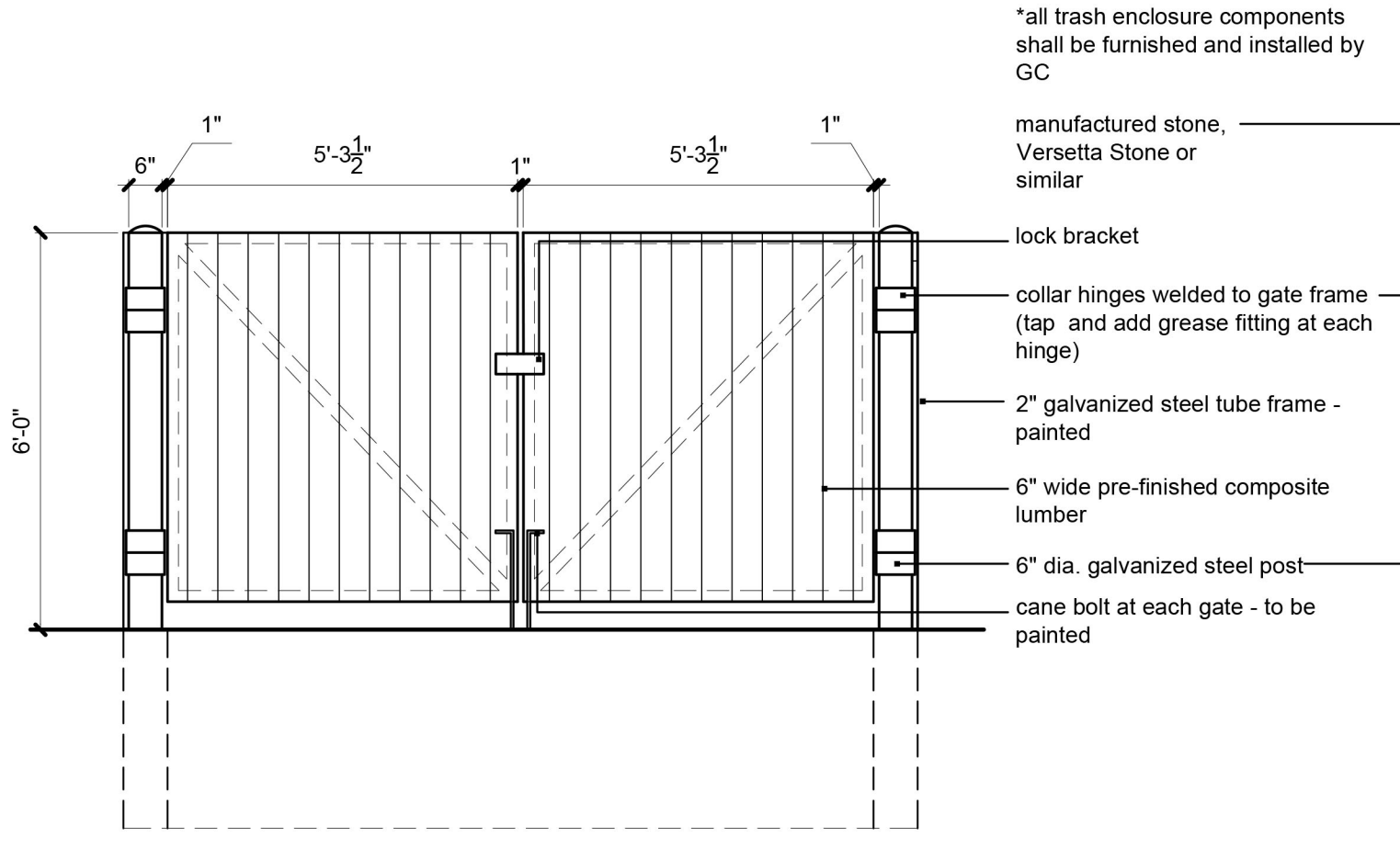


Textured Stucco finish flat metal wall panel, 16" wide, concealed fasteners
Custom Panel Systems, CecoRok wall panel, Varco Pruden Texture Clad wall panel or equal.

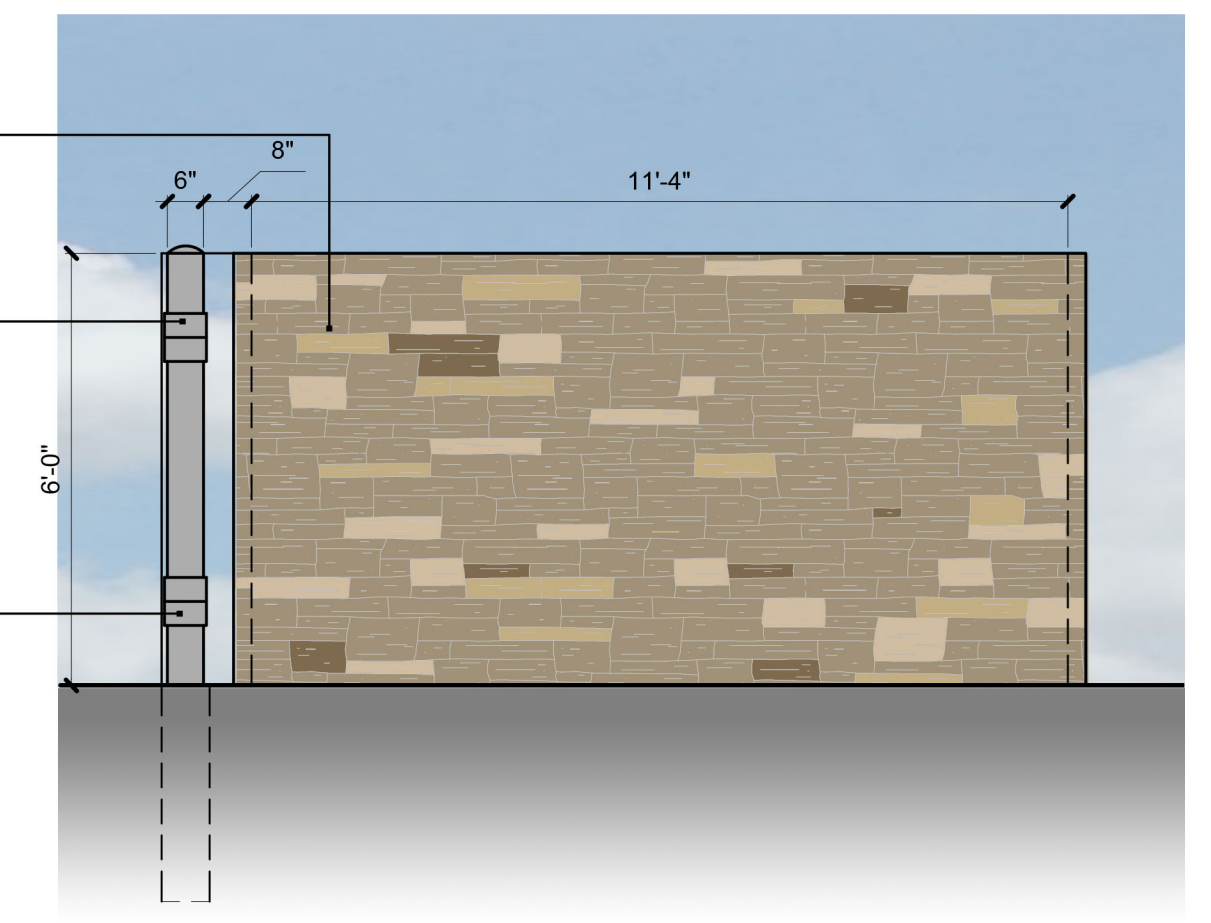
1 Dumpster Enclosure Plan
scale: 3/8" = 1'-0"



4 Dumpster Enclosure Section
scale: 3/8" = 1'-0"



3 Dumpster Front Enclosure Elevation
scale: 3/8" = 1'-0"



2 Dumpster Enclosure Side Elevation
scale: 3/8" = 1'-0"

a new development for
Chapel Ridge Lot 7
Chapel Ridge Business Park
Lee's Summit, Missouri

date
05.10.2022
drawn by
DAE
checked by
DAE
revisions