



# The City of Lee's Summit

## Final Agenda

### City Council - Work Session

Thursday, November 9, 2017

5:45 PM

City Council Chambers

City Hall

220 SE Green Street

Lee's Summit, MO 64063

(816) 969-1000

#### WORK SESSION NO. 5

---

1. CALL TO ORDER
2. ROLL CALL
3. APPROVAL OF AGENDA
4. **PRESENTATIONS:**
  - A. [2017-1531](#) Update on FY18 Snow Plan
  - B. [2017-1554](#) Discussion regarding Council Guidance for 2017 CIP Sales Tax Prioritization of Projects and Programs
  - C. [2017-1633](#) Discussion - Transit Expansion
  - D. [2017-1523](#) City Website Redesign - Presentation of Website Prototype
5. **COUNCIL ROUNDTABLE:**
6. **STAFF ROUNDTABLE:**
7. **ADJOURNMENT**

*Unless determined otherwise by the Mayor and City Council, no new agenda items shall be considered after 11:00 p.m.*

For your convenience, City Council agendas, as well as videos of City Council and Council Committee meetings, may be viewed on the City's Internet site at "www.cityofls.net".

## Packet Information

---

**File #:** 2017-1531, **Version:** 2

---

Update on FY18 Snow Plan

Issue/Request:

Review FY18 Snow Plan. Update City Council on goals of the FY18 Snow Plan, service levels on residential streets, communication, routing philosophy, new equipment, new technologies and questions.

Key Issues:

Snow Plan Overview  
Residential Streets Level of Service  
Communication  
Routing Philosophy  
New Equipment  
New Technology  
Questions

Presenter: Shawn Graff, Assistant Director of Public Works Operations and Bob Hartnett, Deputy Director of Public Works

*Yours Truly*

# 2017-2018 SNOW AND ICE PROGRAM

City Council Work Session

November 9, 2017

# Outline

- Snow and Ice Plan Overview
- Residential Streets
- Communication
- Routing Philosophy
- New Equipment
- New Technology
- Questions

# Snow Plan

- The City's Snow Plan outlines steps for the completion of storm response within **32 ½ - 48 hours after precipitation has ended** provided that required levels of equipment and personnel are available.



# Snow Plan

- Level 1 (pre-treat)
- Level 2 (<1" of snow) 24 hrs
- Level 3 (>1" – 6" of snow) 32.5 hrs  
(>6" – 10" of snow) 40 hrs
- Level 4 (>10" or more snow) 48 hrs
- Level 5 (sustained winds >30 mph) 48 hrs

# Snow Plan

- Level 1            44 snow plow drivers
- Level 2            44 snow plow drivers
- Level 3            58 snow plow drivers
- Level 4            70 snow plow drivers
- Level 5            70 snow plow drivers

NOTE: 25 dedicated drivers from Operations. We rely on paid volunteers from other departments to fill snow plows.

# Snow Plan

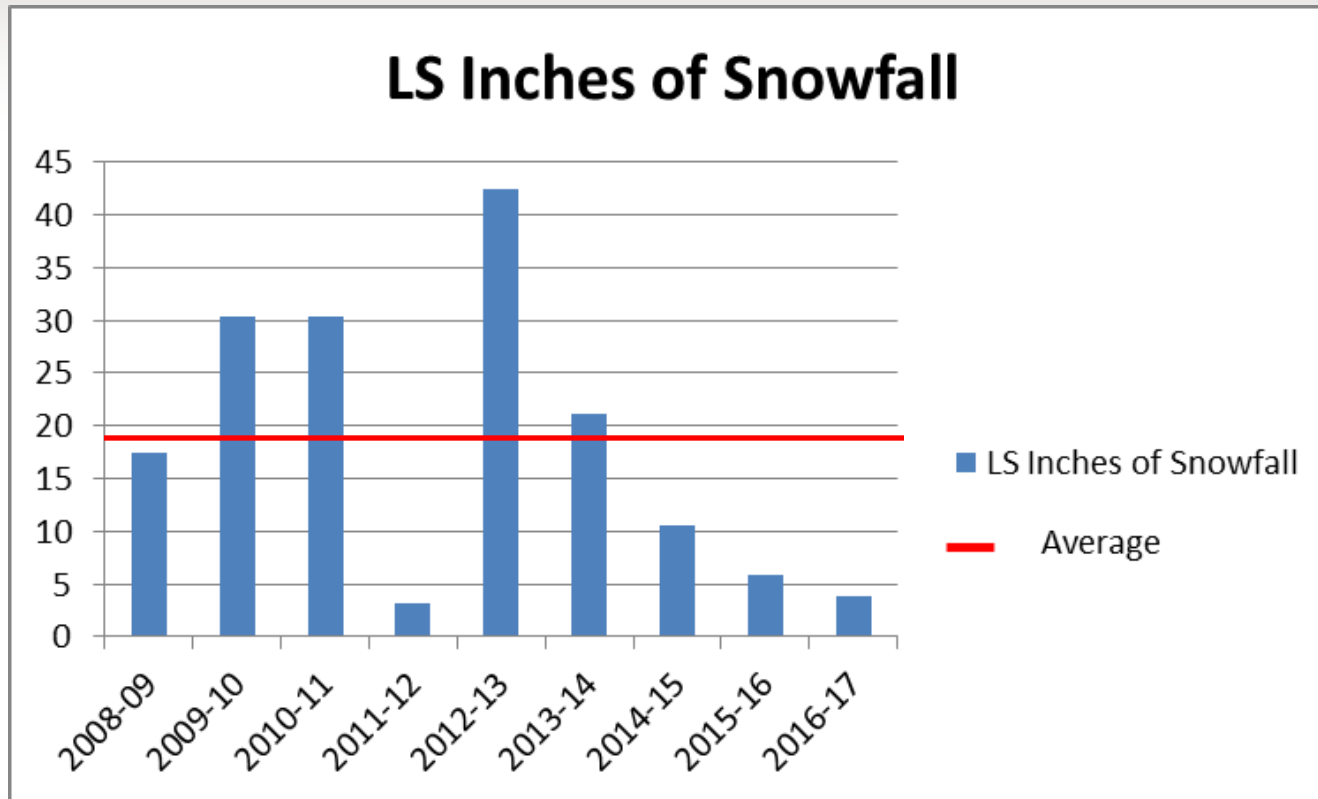
## Additional drivers come from:

- Water
- Engineering
- Development Services
- Police
- Admin
- HR





# Snow Plan



# Snow Plan

- Common Complaints
  - The city never plows my street
  - The driver did not do a good job
  - The plow covered my driveway/sidewalk/hydrant
  - The city is wasting money pre-treating
  - More expensive neighborhoods get plowed first
  - My street has more houses – make it a secondary route
  - Insert a city here \_\_\_\_\_ does a better job

# Residential Streets

- LS has 1105 lane miles to plow and treat every snow storm
- Lakewood (LPOA) 28 Lane Miles?
- During storms streets are plowed multiple times. Some storms require plowing and treating over 3,000 lane miles.

# Residential Streets



# Residential Streets





# Routing Philosophy

- Primary streets are generally completed within four hours after snow stops.
- Secondary streets are generally completed within 12 hours after snow stops.
- It is our goal to have access to most properties within  $\frac{1}{4}$  mile of a primary or secondary street within 12 hours.

# Routing Philosophy

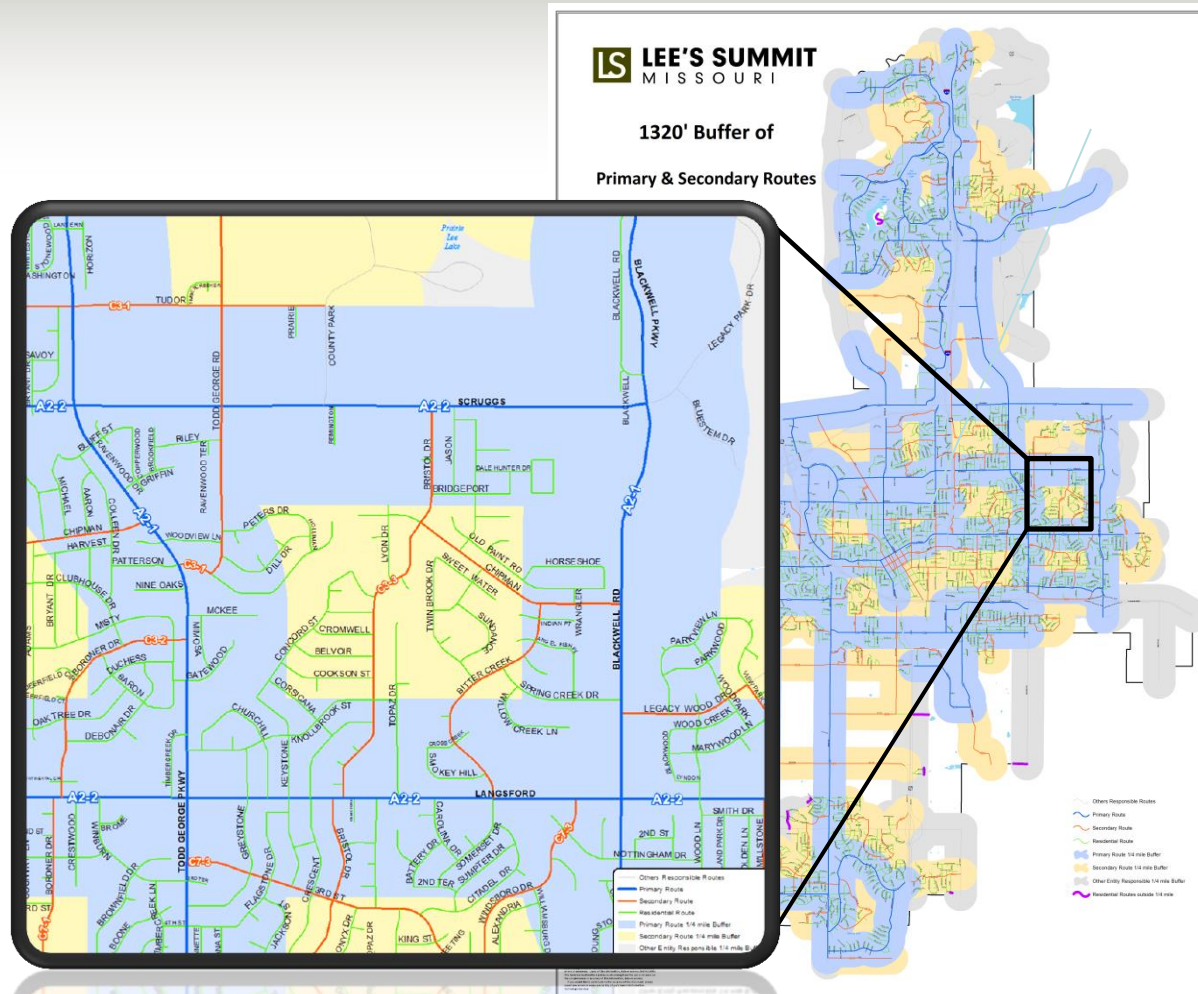
RT	A	B	C	D	E	F	G	H	I	J	K	L	M	N	O	P
R1																
R2																
R3																
R4																
R5																
R6																
R7																
R8																
R9																

# Routing Philosophy

- Primary Routes – Four hours to complete
  - Major roads
- Secondary Routes – Eight hours to complete
  - Feeder roads to and from subdivisions
- Residential Routes – Twenty hours to complete
  - All other roads



# Routing Philosophy



# Communication

- LSsnow.net
  - Snow Plan
- Training
- Dry Run
- Event Communication
  - Media Notifications
  - LSsnow.net
  - Facebook
  - Twitter



# Communication

- Snow Desk phone message will set expectations
  - What to do in an emergency situation
  - When to call for a missed street
  - Leave a message for yard or mailbox damage
- Voicemail will be checked for messages that require action from Public Works

# New Equipment



# Wing Plows





# New Technology

- Route Optimization (FY19)



# New Technology

- Turn by turn routing (FY19)



# APWA

- Attend Snow Conference
  - Latest technologies
  - Materials and Methods
  - Education
- Participate in Metro training
- LS results in Rodeo

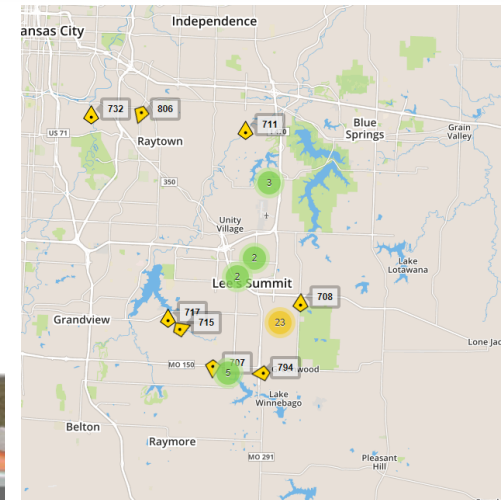
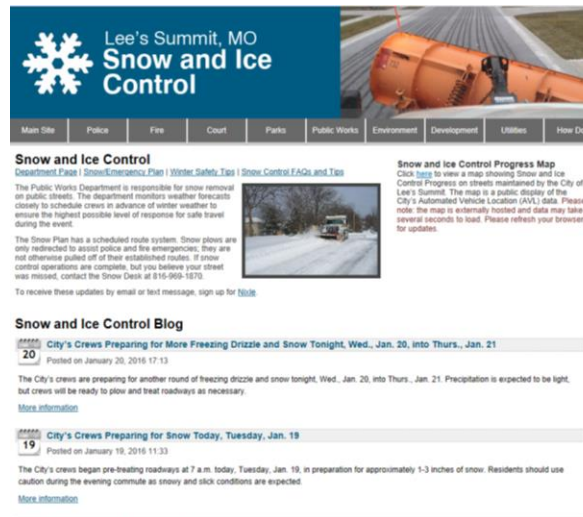


# Questions



# Existing Technology

- Automated Vehicle Locating (AVL)
- Snow Tracker
- LSsnow.net
- Public Facing Website
  - LSsnow.net



# Pre-Treatment



# Communication

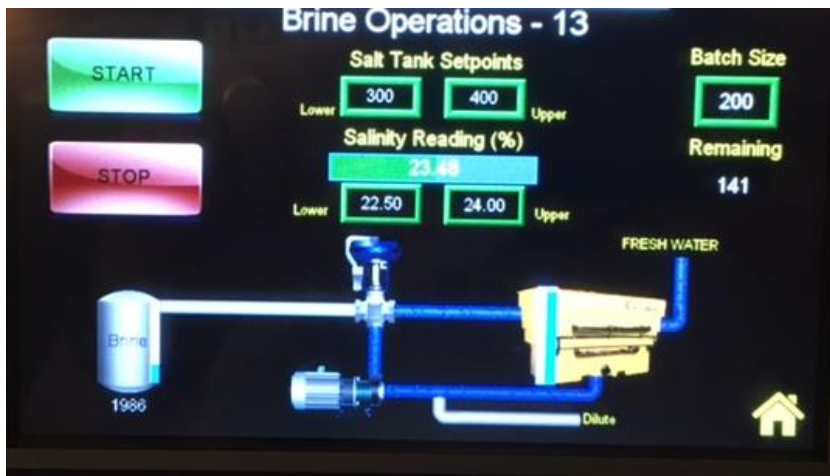
- Media updates are sent out before each storm
- The City uses social media to push updates to citizens
- LSsnow.net the City's snow page has the latest information

# New Equipment





# New Equipment



# Accuweather



# Farmers Almanac





## Packet Information

---

**File #:** 2017-1554, **Version:** 1

---

Discussion regarding Council Guidance for 2017 CIP Sales Tax Prioritization of Projects and Programs

Issue/Request:

Discussion regarding Council Guidance for 2017 CIP Sales Tax Prioritization of Projects and Programs

Key Issues:

- ☐ Voters approved a 15-year extension of the ½-cent Capital Improvement Plan (CIP) Sales tax in April 2017
- ☐ The sales tax can be used to fund road projects, programs to repair and improve to public infrastructure for roads and stormwater systems
- ☐ City Staff is requesting guidance from City Council regarding priorities of work and financing options

Proposed City Council Motion:

N/A; Presentation and discussion

Timeline:

Start: November 2017

Finish: January 2018

Other Information/Unique Characteristics:

The timeline to work with Council Committees is intended to lead the process of preparing the FY 2019 Capital Improvement Plan to allow City Staff the opportunity to program projects and programs into the 5-year plan.

Presenter: George Binger, Deputy Director of Public Works/City Engineer

Recommendation: City Staff recommends sending to Public Works Committed the task of prioritizing projects and programs based on the guidance from the full Council received as part of this discussion.

Committee Recommendation: [Enter Committee Recommendation text Here]

LS

# 2017 CIP Sales Tax Prioritization

November 9, 2017

# Agenda

- o Main purpose and background
- o Funding Guidance
- o Discuss guidance for projects and programs
- o Confirm process for public input

# Purpose

Define the criteria and process to guide Council Committee and City Staff in prioritizing projects and programs funded by the CIP Sales Tax

# Capital Improvements Presented to Public

- o 8 road projects
- o *Downtown parking structure*
- o *Sidewalk gaps program*
- o *Curb replacement program*
- o *Street lighting*
- o *MoDOT system projects*
- o *Rock Island Trailheads*
- o *Stormwater projects*
- o *CMP replacement program*

Project Category	Costs
<u>Road Projects</u>	\$ 58.50 M
<i>Transportation Related</i>	\$ 17.25 M
<i>Stormwater</i>	\$ 24.50 M
<b>TOTAL</b>	<b>\$100.25 M</b>

# Funding Parameters

- o Tax collection from April 1, 2018 to March 31, 2033
- o Potential CIP Sales Tax Revenues
  - o \$112.5M over 15 years
  - o Averages \$7.5M per year
- o Proposed projects list estimated cost of \$100.25M
- o Financing option may influence project prioritization
- o Project sequencing and timing may dictate debt financing
- o Cash flow:
  - o Large project construction typically 3 or more years after tax collection begins
  - o Large projects tend to run sequentially

# Debt Financing: Yes or No ?

## What we Know Today

- Current Interest very low
- Cost of Debt about 2.25%
- Inter-fund loans have \$23M capacity
- Can advance money
- Bond revenues must be spent within 36 months

## What we Don't Know

- Inflation
- Future interest
- Future value of land
- Project schedules
- Future revenues
- Will debt remain to be cheaper than inflation

# Project Evaluation

Factors to Consider	
Safety	Urgency
Capacity	Public Impact
Livability	Condition
Economic Development	Public Health
Cost Sharing	Public Demand
Future Savings	



# Project Evaluation Criteria

Project/Program	Improvement Description	Priority Considerations											Cost
		Safety	System Capacity	Livability	EcoDevo	Public Impact	Public Demand	Public Health	Condition	Cost Sharing	Urgency	*Sustainable	
Project A		●	●	●	●	●	●	●	●	●	●	●	\$\$\$
Project B		●	○	●	●			●	●	○	○		\$
Project C		○	●	●	●	●	●	●		●	●	●	\$\$\$\$
Program 1		●		●		○	○	●	●				\$
Program 2			○	●		○		○	●				\$\$
Program 3		○		●	○	●	○	●	●				\$\$\$

\*Long-Term Maintenance

# Public Input for Prioritization

- o What / how much of a role do we want for Public Input on prioritization of work?
- o Is public comment at Committees sufficient ?

# Tentative Timeline

- o Estimated Timeline
  - o November & December PWC
  - o January 2018: Council presentation or work session
  - o February 2018: Council finalizes project priorities
  - o March-June 2018: CIP presented and adopted
- o Expect first project no earlier than 2019

# Re-Stated Purpose

It is our understanding that...

A large, stylized logo consisting of the letters 'L' and 'S' in a light gray color. The 'L' is a simple vertical bar with a horizontal base. The 'S' is a thick, rounded letter. The two letters are positioned such that the 'L' is on the left and the 'S' is on the right, with the 'S' partially overlapping the 'L'.

## Packet Information

---

**File #:** 2017-1633, **Version:** 1

---

Discussion - Transit Expansion

Issue/Request:

Discuss City Council interests in transit service expansion.

Key Issues:

- Fixed Route from Independence, MO (Independence Transit Center)
- Fixed Route from Kansas City, MO (3-Trails Transit Center)
- Potential Service Operations
- Potential Cost of Services (local share and FTA funding)
- Service Agreements

Background:

Transit is a City Council goal. A Transit Study for Lee's Summit was completed most recently in 2015/16 that resulted in significant changes to the demand response transit service implemented earlier in 2017 within Lee's Summit (e.g. RideKC Lee's Summit, operated by OATS). In addition to those transit service recommendations in the study, fixed route services other than the existing Lee's Summit Express (a park and ride commuter service to downtown Kansas City) were considered. Similarly, the KCATA and Mid-America Regional Council have been developing transit plans. Among those plans, the Eastern Jackson County Transit Plan and MARC Smart Moves 3.0 recommend new or extended fixed route(s) into Lee's Summit.

A new route is proposed between the 3-Trails Transit Center (located at Bannister and Blue Ridge/Cerner in Kansas City, MO) and downtown Lee's Summit, with a stop at MCC-Longview. A route extension (with revised service schedule) is proposed between the Independence Transit Center (located at Truman and Noland, downtown Independence, MO) and downtown Lee's Summit, with stops at TMC-Lakewood and St. Lukes East hospitals. The existing route from Independence follows Lee's Summit Road with service to TMC-Lakewood on a limited schedule. Both routes would likely operate Monday thru Friday from 6 a.m. to 6 p.m. on an hourly schedule.

The cost of service for the two aforementioned described routes and operation is conceptually:

Independence Transit Center Connection - \$325,000. Negotiate split/shared cost with Kansas City, MO (\$162,500). Apply Lee's Summit's FTA Funding (Section 5307 operating funds at 50% match) to Lee's Summits share of service cost with a local cost of approximately \$81,250.

3-Trails Transit Center Connection - \$525,000. Negotiate split/shared cost with Kansas City, MO (\$262,500). After Lee's Summit's FTA Funding is applied to Lee's Summits share of service cost, the local cost is approximately \$131,250.

The total conceptual cost to Lee's Summits local share of both transit services is \$212,500. The Lee's Summit FTA Funding (Section 5307) has unallocated capacity to support the costs noted above. There is no identified source of local funds for this expense. The City's existing transit services have been funded annually from the Transportation Sales Tax at about \$280,000, after FTA funding is applied. The Transportation Sales Tax, which is the source of funding for pavement, curb and bridge maintenance, does not have adequate capacity to absorb the additional costs.

Presenter: Michael Park, PE, PTOE, City Traffic Engineer

Recommendation: [Enter Recommendation Here]



## Packet Information

---

**File #:** 2017-1523, **Version:** 1

---

City Website Redesign - Presentation of Website Prototype

Issue/Request:

City Website Redesign - Presentation of Website Prototype

Key Issues:

City staff have been working on a complete redesign of the City's website and will be presenting the City Council with a status report of efforts and activities completed thus far as well as an overview of the prototype of the new website. The prototype phase is a critical milestone in the website redesign process and is one where feedback from stakeholders is important prior to pursuing next steps of the redesign process.

Staff will be providing a general overview of the website prototype to the City Council as part of the presentation.

Proposed City Council Motion:

No motion necessary - presentation is primarily informational and feedback from the Mayor and Council is encouraged.

Background:

City staff have been working on a complete redesign of the City's website for over a year involving numerous City staff and stakeholders within the community. Primary goals of the initiative is to:

- \* Improve user experience and functionality for stakeholders (citizens, residents, business owners, etc)
- \* Enhance and maintain uniformity across the website (brand, image)
- \* Upgrade to modern technologies/platforms to allow for future growth and opportunities
- \* Optimize for mobile viewing
- \* Provide a desirable user experience
- \* Enhance search functionality and ease of use

Presenter:

Steve Marsh, Chief Technology Officer  
Craig Gentry, Web Administrator

# **City of Lee's Summit**

**Website Redesign Prototype  
City Council Presentation  
November 9, 2017**

# Agenda

- **Project Stakeholders**
- **General Project Process**
  - **Project Activity**
- **Prototype Presentation**
  - **Next Steps**

# Project Stakeholders

## Core Project Team


**Cathy Loveland** (ITS Oversight)  
**Chayne Novotny** (Web Support)  
**Craig Gentry** (Web Admin)  
**Kelli Welch** (SME)  
**Mark Dunning\***  
**Miranda Landstra** (SME)  
**Sarah Shore** (SME)  
**Sharon Alexander** (PM)  
**Steve Marsh** (ITS Oversight)

\*Project Sponsor/SME

## Subject Matter Experts

**Ben Calia** (Procurement)  
**Caroline Wiggins** (Fire)  
**Christopher Depue** (PD)  
**Christopher Hughey** (Dev Center)  
**Darlene Pickett** (Finance)  
**Dawn Bell** (Planning)  
**DeeDee Tschirhart** (Procurement)  
**Desiree Collins** (Procurement)  
**Heping Zhan** (Planning)  
**Jack Feldman** (Budget, Finances)  
**Jim Eden** (Fire)  
**Jina Bellamy** (Law)  
**Kara Taylor** (Public Works)  
**Kathy Melcher** (Finance)  
**Kelly Elliott** (Municipal Court)  
**Kelly Phipps** (Map Gallery)  
**Mark Stinson** (Fleet)  
**Mike Weisenborn** (Planning)  
**Nick Edwards** (Boards & Comm)  
**Rodney Wagner** (Animal Control)  
**Shelby Green** (Finance)  
**Tarah Daugherty** (Procurement)

# Community Partners

- 
- ◊ Dale Coy
  - ◊ Diane Forte
  - ◊ Gina Seibel
  - ◊ Janice Phelan
  - ◊ Jen Stellar
  - ◊ Jim McKenna
  - ◊ Stephanie Kusek
  - ◊ Stephen Gentry
  - ◊ Tina Chace

General Project Process

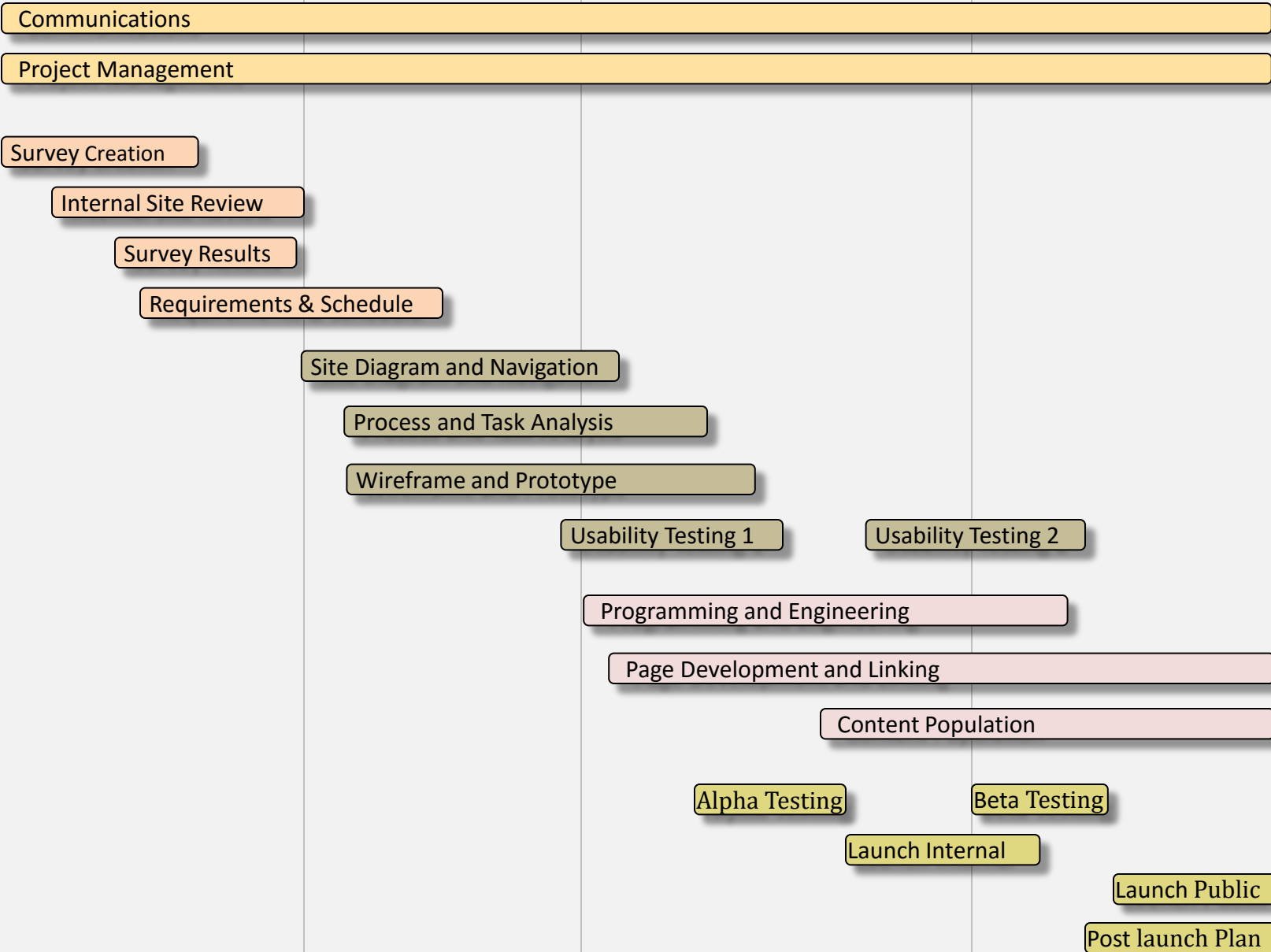
- Project Activities**
- Communications and Project Management
  - Requirements Development
  - User Experience Design
  - Site Development and Production
  - Testing and Quality Control

Planning/Requirements

Design

Configuration/Development

Testing/Launch





# Website Redesign Project Activity

Planning/Requirements

Design

Configuration/Development

Testing/Launch

## Project Activities

Requirements Development

**Community Survey**  
(Aug 2016 – Sept 2016)

**SME Needs Assessment Meetings**  
(Nov 2016 – Dec 2016)

User Experience Design

**Conceptual Design** (Jan 2017)

**Wireframes** (Feb 2017 – Mar 2017)

**Prototype Development**  
(April 2017 – Oct 2017)



**Site Map Creation**

**Writing Standards Development**

**Content Management Training**

Site Development and Production

**Programming and Engineering**

**Content Population**

Testing and Quality Control

**Alpha Testing**

**Beta Testing**

**Launch - Internal**

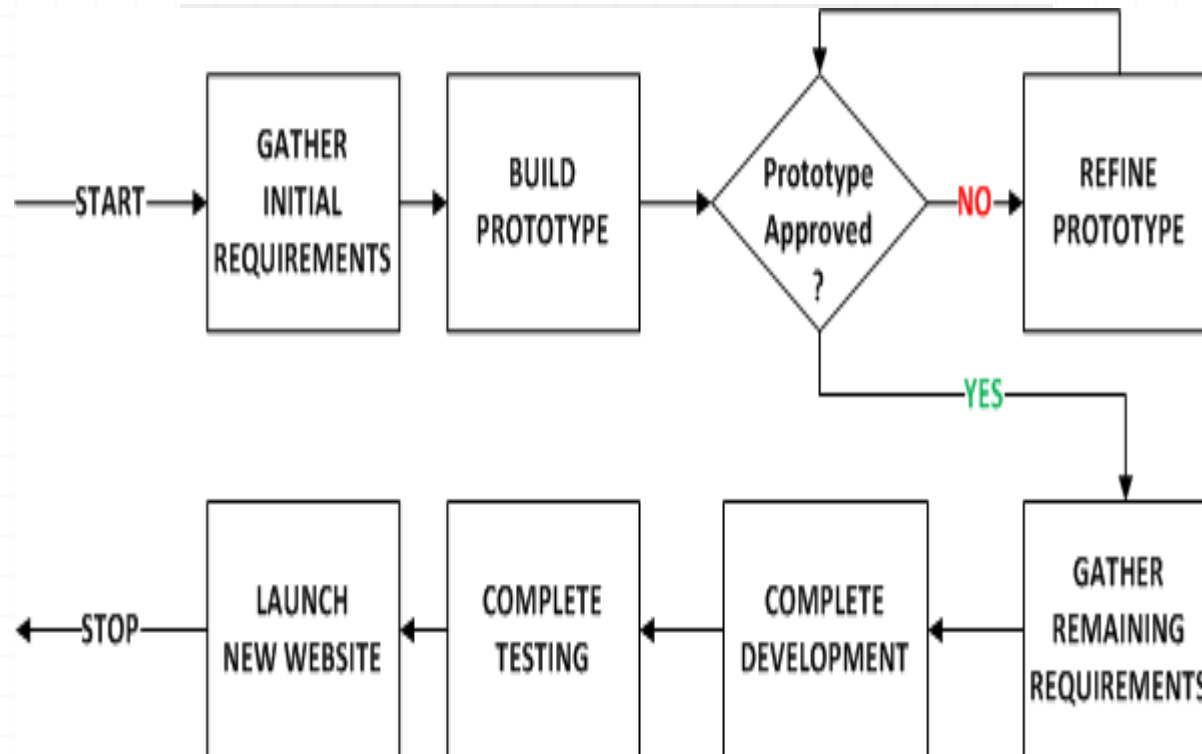
**Launch - Public**

**Post Launch Plan**

# Prototype Development

- ◊ Community Survey Results
- ◊ Initial SME requirements
- ◊ Google Analytics
- ◊ Award-Winning City Website Designs
- ◊ Web Writing Standards Best Practices
- ◊ City of LS Branding

# Prototyping Model



# Prototype Presentation



0 <http://cityofls.net/cols-prototypes/index.html>

# Stakeholder Feedback

1. Does anything seem out of place or unnecessary?
2. What features are missing that is absolutely necessary?
3. Could you find what you were looking for?
4. How likely would you recommend the redesigned website?
5. Overall, how does the prototype measure up to your expectations?

# Next Steps

1. Compile prototype feedback
2. Gather remaining requirements
3. Complete writing standards
4. Train content managers
5. Complete development
6. Add content
7. Complete testing
8. Launch new website



**Engage:**

Services | Resources | News

**Explore:**

Play | Discover | Connect

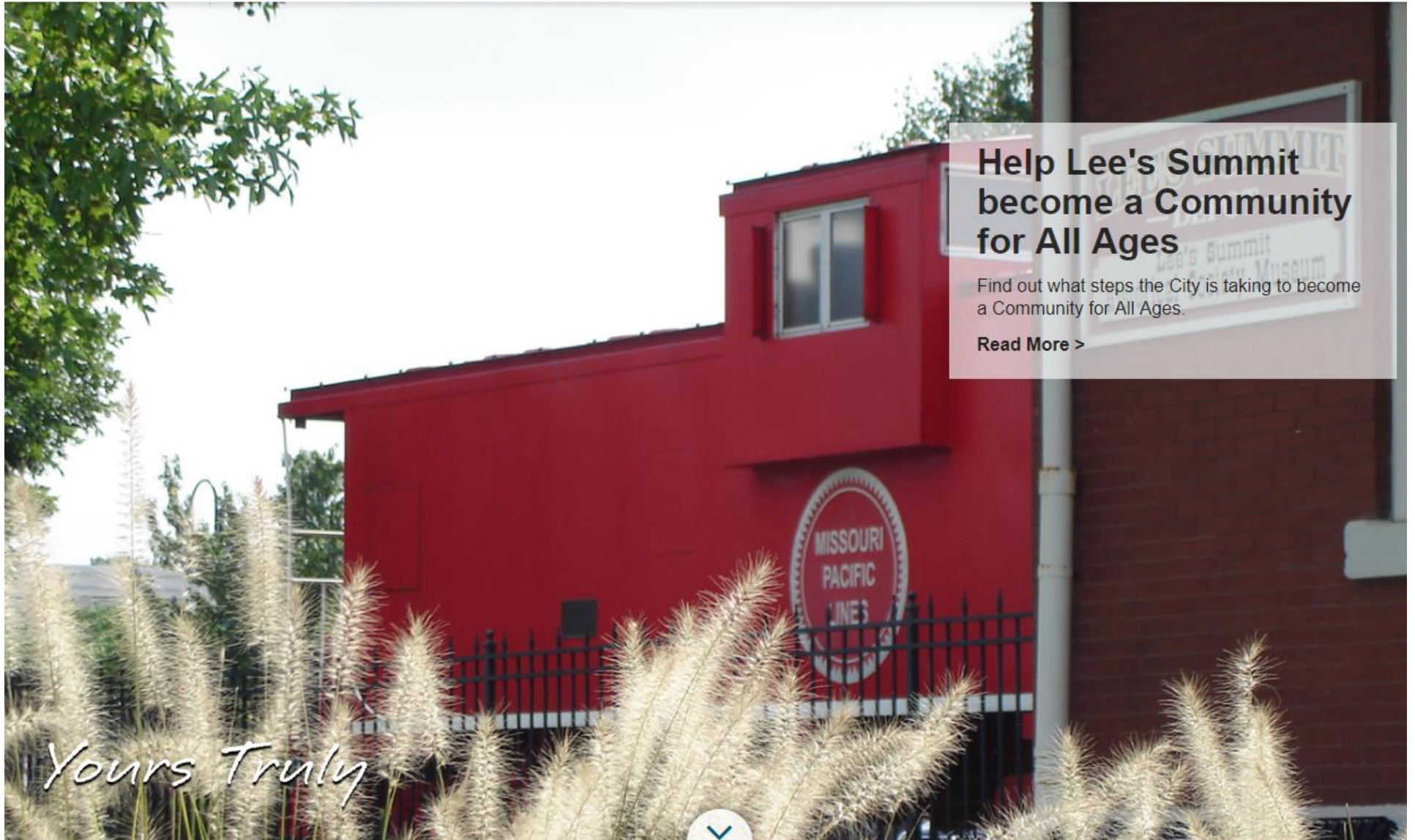
**Thrive:**

Plan | Build | Grow

**City Government:**

Officials | Departments | Meetings

**How Do I...**





**Engage:**

Services | Resources | News

**Explore:**

Play | Discover | Connect

**Thrive:**

Plan | Build | Grow

**City Government:**

Officials | Departments | Meetings

**How Do I...**

**Contact Us**

Contact Us  
Frequently Asked Questions  
Get Involved  
Schedule A Tour/Speaker

**Make A Payment**

Court Fees  
Parking Tickets  
Water Bill

**News & Communications**

Media Information  
News Releases  
Newsletters  
Social Media

**Public Safety**

Crime Mapping  
Neighborhood Watch  
Programs & Services  
Public Safety Notifications  
Weather Safety/Emergency Information

**Resources**

Capital Improvement Projects  
Careers  
City Calendars  
Codes, Ordinances & Regulations  
Election Information  
Health  
Maps  
Meetings, Agendas & Minutes  
New Resident Guide  
Permits  
Public Records Request  
Recycling/Environment

**Services**

Animal Services  
Municipal Court Services  
Water & Sewer Services

**Transportation**

Airport  
Bus/Transit  
Road & Bridge Projects  
Road Closures  
Snow & Ice  
Street Programs & Maintenance

[Read More >](#)



**Engage:**

Services | Resources | News

**Explore:**

Play | Discover | Connect

**Thrive:**

Plan | Build | Grow

**City Government:**

Officials | Departments | Meetings

**How Do I...**

**Arts, Culture & Entertainment**

Artists At City Hall  
Arts Council  
Community Art Groups  
Community Calendar  
Legacy Park Amphitheater

**Connect**

City Facility Tours  
Contact The City  
Get Involved  
Social Media

**Downtown Lee's Summit**

Downtown Lee's Summit Main Street  
Downtown Master Plan  
FREE Public Parking

**Lee's Summit History**

Historic Cemeteries  
History Of Lee's Summit  
Lee's Summit Historical Society & Museum  
Missouri Town 1855  
Other Historic Sites

**Parks & Recreation**

Athletics & Activities  
Calendar  
Facilities  
Legacy Park  
Parks  
Summit Waves

**Places Of Interest**

Amtrak Station  
Downtown Lee's Summit  
Farmers Market  
James A. Reed Wildlife Area  
Longview Lake

**Visitors**

LSTourism.com

[Read More >](#)





**Engage:**

Services | Resources | News

**Explore:**

Play | Discover | Connect

**Thrive:**

Plan | Build | Grow

**City Government:**

Officials | Departments | Meetings

**How Do I...:**

**Community Partners**

Downtown Lee's Summit Main Street  
Lee's Summit Chamber Of Commerce  
Lee's Summit Economic Development Council

**Development & Regulations**

Building Codes & Amendments  
Design & Construction Manual  
Development Process  
Inspection Process  
Public Works Policies  
Unified Development Ordinance

**Doing Business With Lee's Summit**

Business & Contractor Licenses  
Contracts, Vendors & Bids  
Incentive Policy  
Schedule Of Fees  
Surplus Property

**Fees**

License (Excise) Tax  
Permits & Development Fee Estimation  
Schedule Of Fees  
Water & Sewer Connection

**Permits & Licenses**

Alarm Permits  
Business & Contractor Licenses  
Construction Permits  
Event Permits  
Fireworks & Burn Permits  
Pet License

**Public Notices & Bidding**

Bid Opportunities  
Public Notices

**Zoning**

Maps  
Unified Development Ordinance  
Zoning Approval - New Business  
Zoning Verification

Help Lee's Summit  
become a Community  
for All Ages

Get all the steps the City is taking to become  
a Community for All Ages

[Read More >](#)



**Engage:**

Services | Resources | News

**Explore:**

Play | Discover | Connect

**Thrive:**

Plan | Build | Grow

**City Government:**

Officials | Departments | Meetings

**How Do I...**

**About The City**

Awards & Recognitions  
City Charter & Code Of Ordinances  
Contact Us  
History  
Maps  
Phone Directory

**Careers**

City Employment  
Firefighter Recruitment  
Parks & Recreation Employment  
Police Employment

**City Administration**

City Attorney  
City Manager

**City Officials**

City Council  
Mayor  
Municipal Judges

**City Transparency**

Budget, Finances & Taxes  
City Contracts, Vendors & Bids  
Publications & Reports  
Public Records Request  
Schedule Of Fees

**Committees, Boards & Commissions**

Boards & Commissions  
Council Committees  
Meetings, Agendas & Minutes

**Departments & Divisions**

Airport  
Animal Control  
Creative Services  
Development Services  
Fire  
Parks & Recreation  
Planning & Special Projects  
Police  
Procurement & Contract Services  
Public Works  
Water Utilities

**Elections**

City Elections  
Jackson County Election Board

**Municipal Court**

Court Docket  
Fines & Fees  
Make A Payment

**News & Communications**

Media Information  
News Releases  
Newsletters  
Social Media

**Volunteer Opportunities**

Animal Shelter  
Environment  
Parks  
Other Ways To Get Involved!





**Engage:**

Services | Resources | News

**Explore:**

Play | Discover | Connect

**Thrive:**

Plan | Build | Grow

**City Government:**

Officials | Departments | Meetings

**How Do I...**

**Apply**

Business Licenses  
Citizens Leadership Academy  
Citizens Police Academy  
Development Applications  
Employment  
Grants  
Record Request

**Contact**

Contact Us Form  
Phone Directory

**Pay**

Court Fees  
Parking Tickets  
Property Tax  
Water Bill

**Find**

Adopt-A-Pet  
Airport  
Bid/Contracts/Vendor Info  
Cemetery Information  
Charter & Code Of Ordinances  
City Calendar  
Councilmembers/Districts  
Elections & Voting  
Fees & Charges  
Maps  
Meetings, Agendas & Minutes  
New Resident Guide  
Parks & Facilities  
Property Tax Information  
Residential Trash  
Road & Bridge Projects  
Utilities

**Permits & Licensing**

Alarm Permits  
Business Permits & Licenses  
Construction Permits & Licenses  
Event Permits  
Fireworks & Burn Permits  
Pet License

**Register**

Community Emergency Response Team  
Training  
Parks Classes And Leagues  
Public Safety Notifications  
Vendor Registration  
Volunteer Opportunities

**Report**

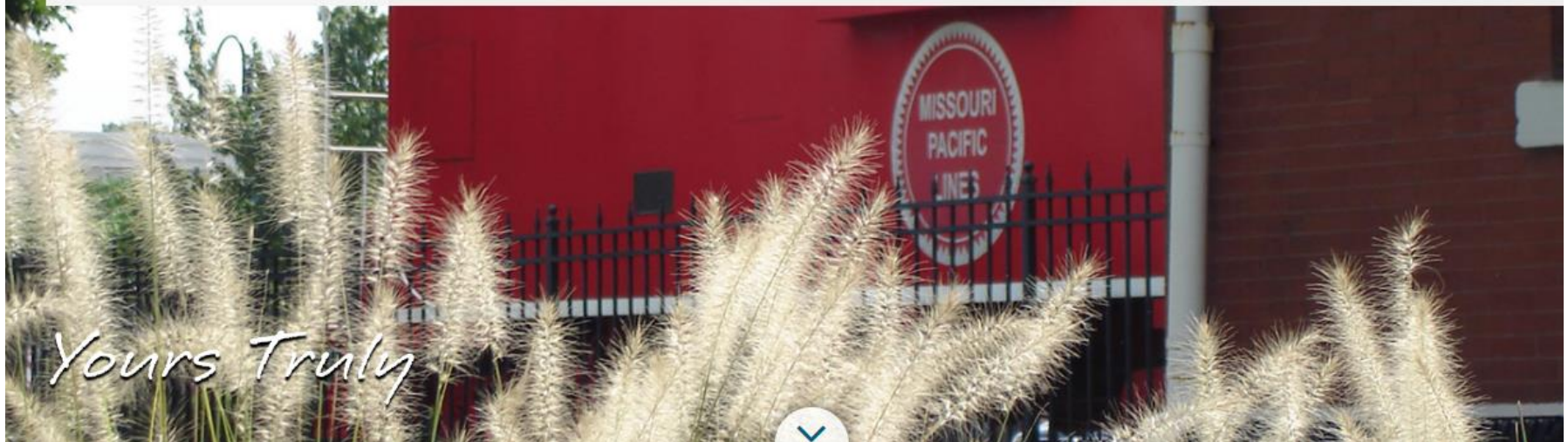
File A Claim  
Pothole  
Street Light Issue  
Traffic Signal Issue  
Unmaintained Property  
Water Or Wastewater Emergency

**Schedule**

Building Inspection  
Right-Of-Way Inspection  
Tours, Speakers And Events  
Water Service Start Or Stop

**Watch**

LSTV  
Meetings





**Engage:**  
Services | Resources | News

**Explore:**  
Play | Discover | Connect

**Thrive:**  
Plan | Build | Grow

**City Government:**  
Officials | Departments | Meetings

**How Do I...**



Permits &  
Licenses



Parks &  
Recreation



Pay Water  
Bill



Public  
Safety



Agendas  
& Minutes



Report a  
Pothole

## CITY NEWS

### New Ambulance In Service at Station #6

The Lee's Summit Fire Department placed its sixth ambulance in service this morning at Station #6, located at Blackwell Road and Langsford Road. Rescue 6 is an additional staffed ambulance that was approved by City Council in 2016, and replaces the one originally located at Station #6 and was relocated to Station #2 to improve response times and reliability to the entire city. The additional unit will help meet the public safety needs of a growing community that has seen an 8% increase in calls for service in 2017.

[Read More »](#)



### City's Government Access Channel, (LSTV) now available on Google TV, channel 143

The City of Lee's Summit's Government Access Channel (LSTV), is now available on Google TV, channel 143, reaching more Lee's Summit residents.

LSTV provides live and rebroadcast coverage of various public city meetings, including Lee's Summit City Council, Planning Commission and other committees.

[Read More »](#)



### Minor Home Repair Program Accepting Applications Beginning August 14, 2017

If you are in need of minor exterior home repairs or minor private sanitary sewer improvements, the City's Minor Home Repair program might be right for you. Applicants must meet income guidelines and could be eligible for repairs not to exceed \$10,000 per household for home repairs and \$3,000 per household for private sanitary sewer improvements. The City is accepting applications for this program from August 14 through September 29, 2017.

[Read More »](#)



[READ MORE CITY NEWS >](#)

Quick Tabs and City News Section





**Engage:**  
Services | Resources | News

**Explore:**  
Play | Discover | Connect

**Thrive:**  
Plan | Build | Grow

**City Government:**  
Officials | Departments | Meetings

**How Do I...**



[READ MORE CITY NEWS >](#)

## CITY SPOTLIGHT



### Join us on #CityHallSelfie Day!

Municipal Governments across the U.S. are competing to see which city has the most selfies taken in front of their respective City Hall buildings. To participate in the selfie challenge, it's simple, take your selfie at the Lee's Summit City Hall, 220 SE Green St., and tag #CityHallSelfie and #CityofLS on social media sites such as Facebook, Instagram and Twitter.



### Total Solar Eclipse Safety Tips

On August 21, millions of people across the country will experience the first total solar eclipse to cross America coast-to-coast in 99 years. In addition to those who live in the "path of totality," which includes a large part of the Kansas City region, up to 7 million people nationwide are expected to travel to see the eclipse.

*This white space has been added intentionally to show an area that is still under development for this City of LS Homepage. Potential items in development for this lower area: Legislative Information Center Summary and Information, Social Media Feed from the City's Twitter account, City Calendar and upcoming event information.*



**City Spotlight and Legislative Information Center Area**



**Engage:**  
Services | Resources | News

**Explore:**  
Play | Discover | Connect

**Thrive:**  
Plan | Build | Grow

**City Government:**  
Officials | Departments | Meetings

**How Do I...**



*This white space has been added intentionally to show an area that is still under development for this City of LS Homepage. Potential items in development for this lower area: Legislative Information Center Summary and Information, Social Media Feed from the City's Twitter account, City Calendar and upcoming event information.*

#### Follow City of Lee's Summit!



[View all City Social Media Connections](#)

#### City Hall

220 SE Green  
Lee's Summit, MO 64063  
816-969-1000

[Contact the City](#)  
[Frequently Asked Questions](#)  
[Phone Directory](#)

#### Helpful Links

[Careers](#)  
[City Council](#)  
[City Charter & Code Of Ordinances](#)  
[Elections & Voting](#)  
[Get Involved](#)  
[Maps](#)  
[Meetings, Agendas & Minutes](#)  
[News Releases](#)  
[Permits & Licenses](#)  
[Publications & Reports](#)  
[Recycling/Environment](#)

#### City of Lee's Summit, MO

[Airport](#)  
[Animal Control](#)  
[Creative Services](#)  
[Development Services](#)  
[Fire Department](#)  
[Municipal Court](#)  
[Parks and Recreation](#)  
[Planning & Special Projects](#)  
[Police Department](#)  
[Procurement & Contract Services](#)  
[Public Works](#)  
[Water Utilities](#)

Copyright © 2017 City of Lee's Summit

[Site Policies](#) | [Accessibility](#) | [Site Map](#)

[Login](#) | [Language Translate](#)



**Webpage Footer**