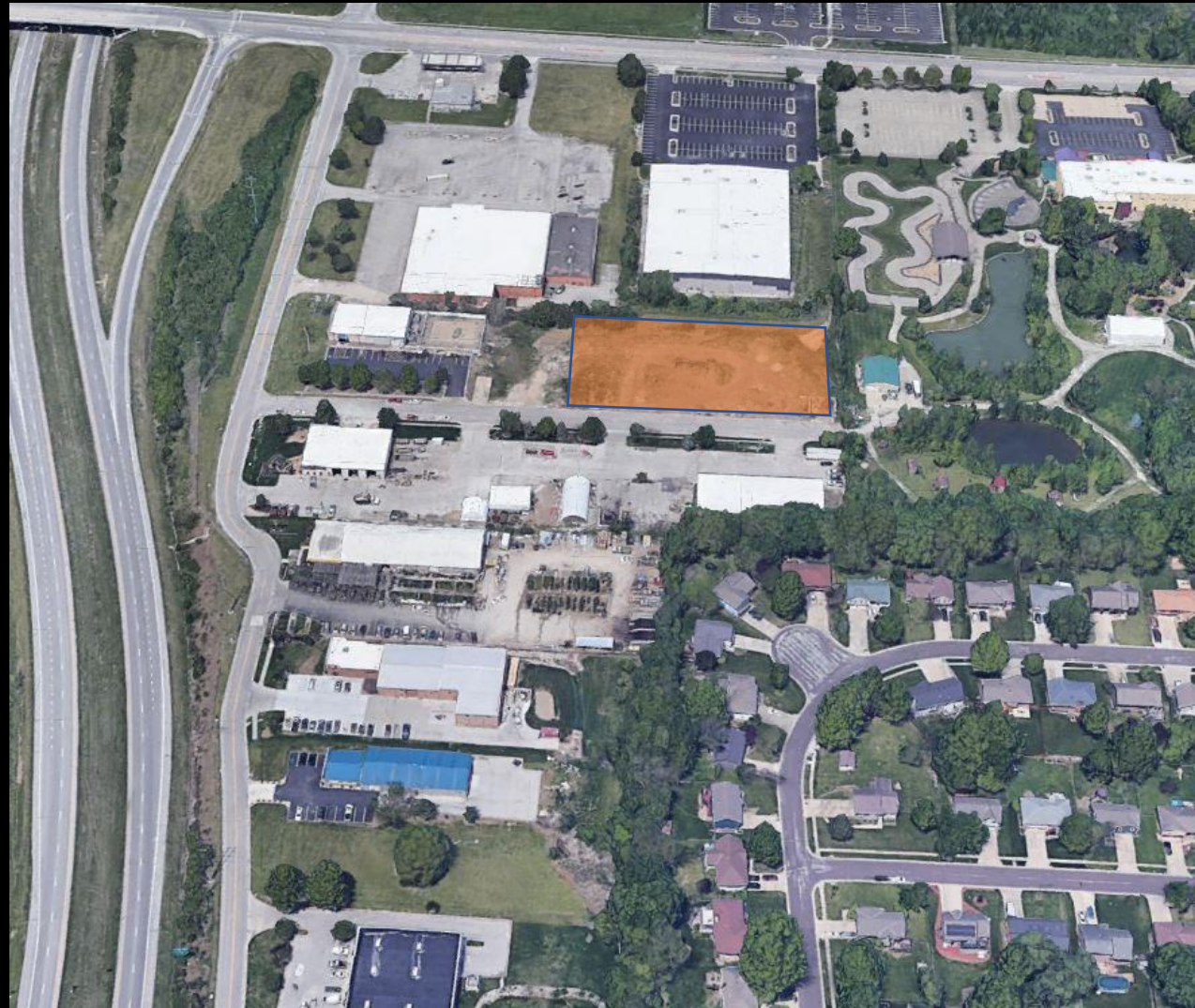
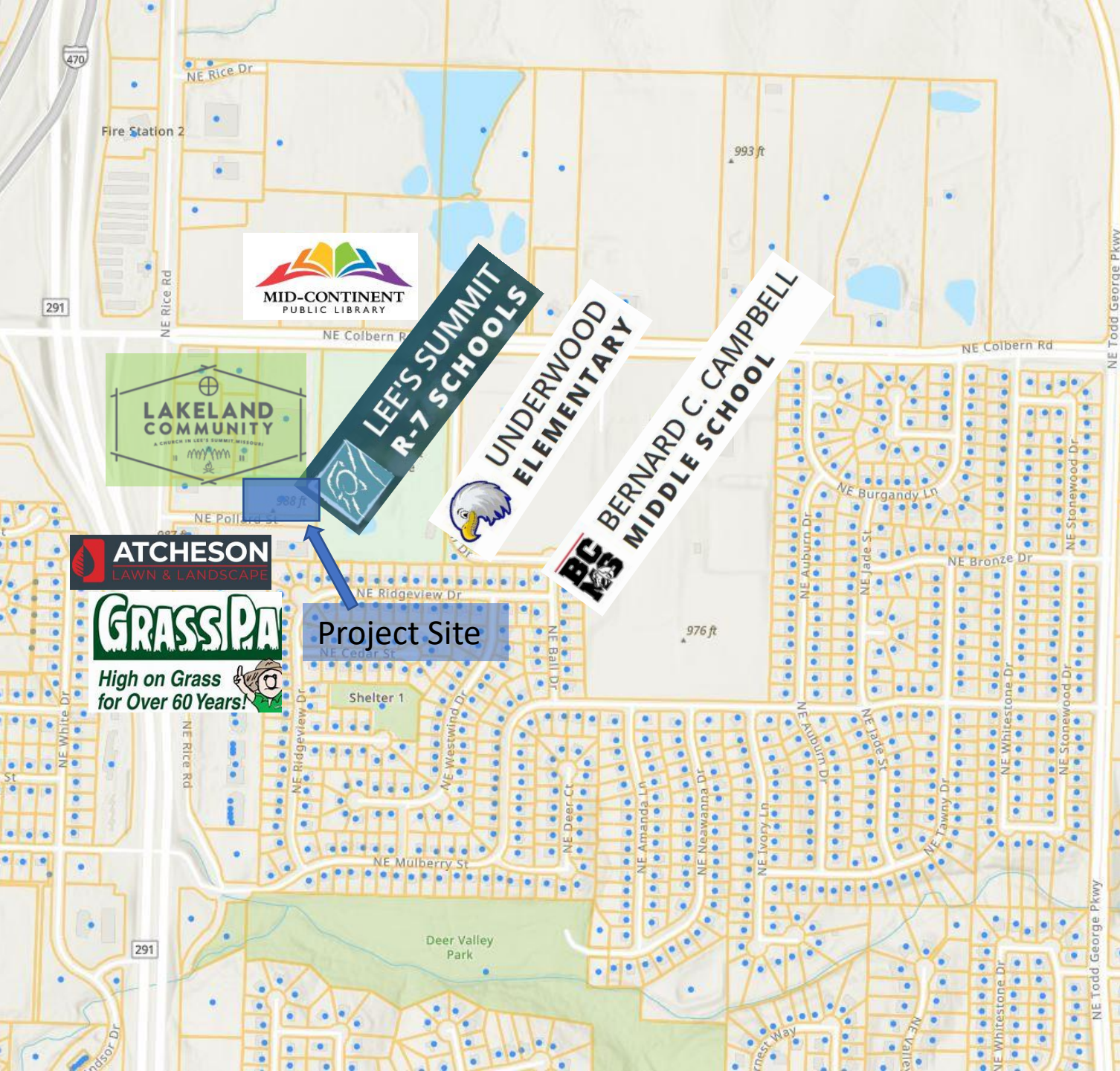


950 NE Pollard St



PL2022-239 – Comprehensive Plan Amendment; and
PL2022-155-Rezoning and Preliminary Development Plan
Lee’s Summit Planning Commission – July 14, 2022



Project Location

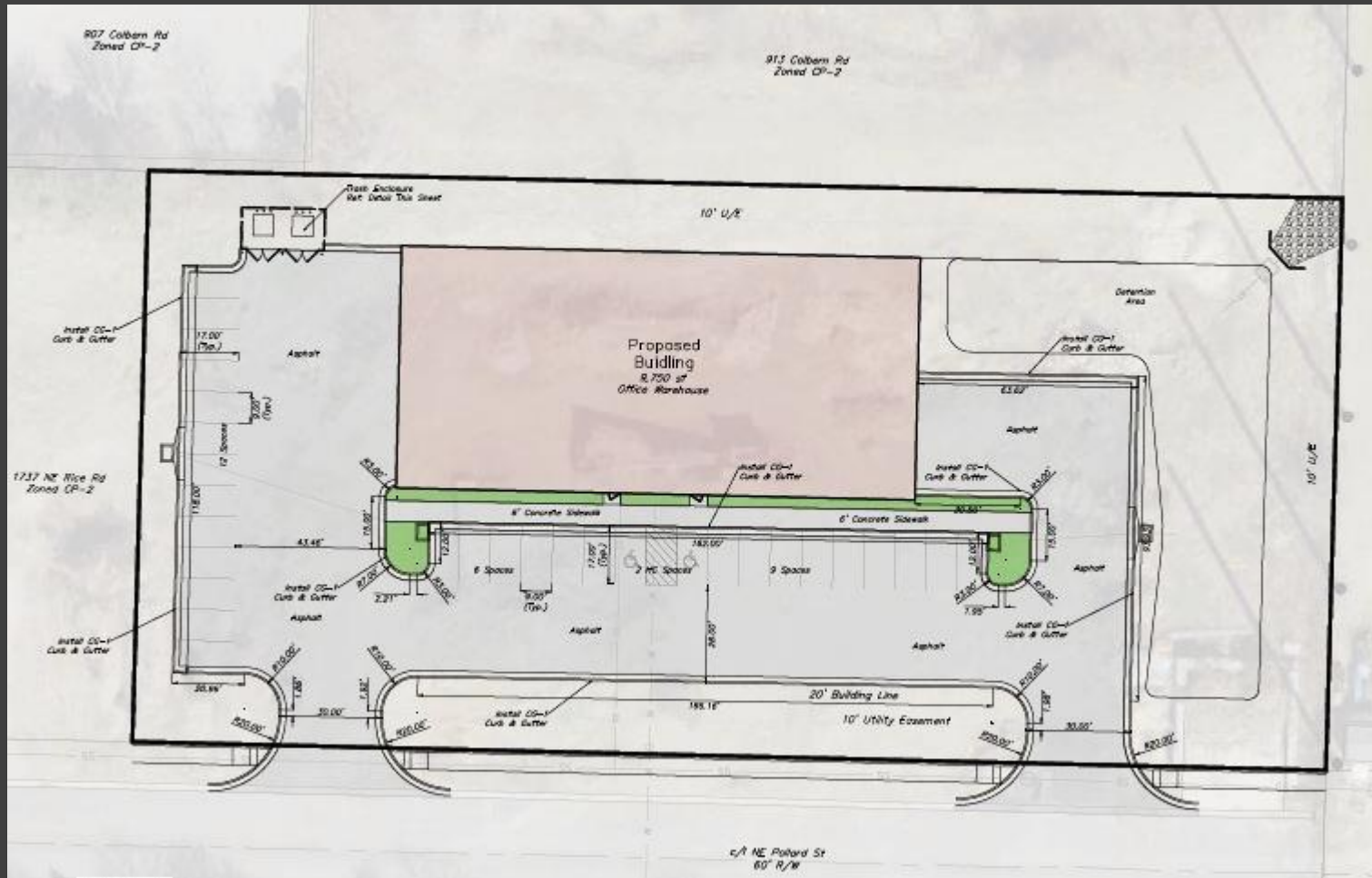
950 NE Pollard St
Lee's Summit, MO

1.31 acres generally located east of NE Rice Road, north of NE Custer Drive, and north of NE Strother Road.

Project Team

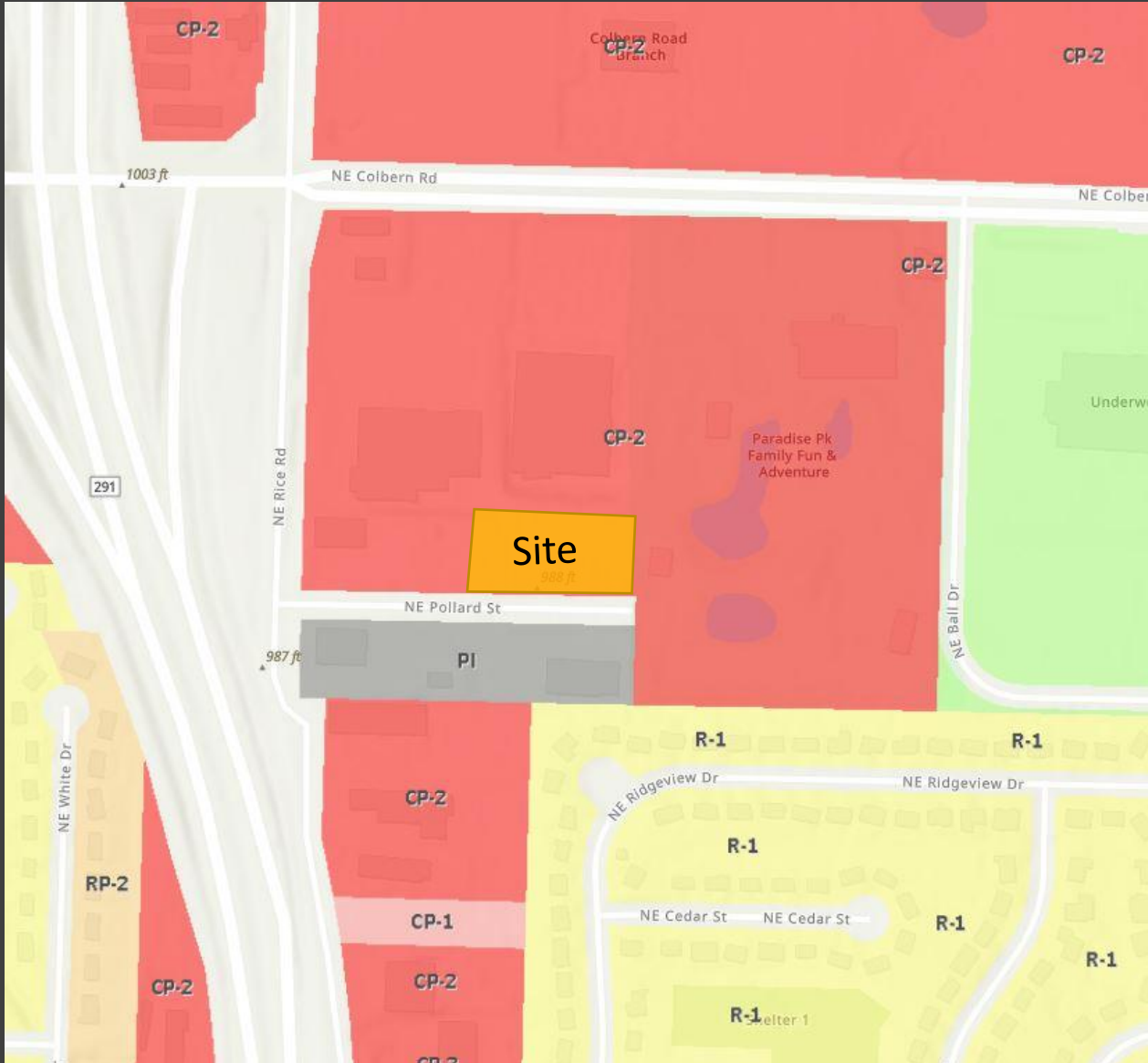


Project Summary



- 9,750 sf Building
- 21 Parking Spaces
- Office / Warehouse

Zoning Map



Current Zoning CP-2
 Proposed Zoning PI

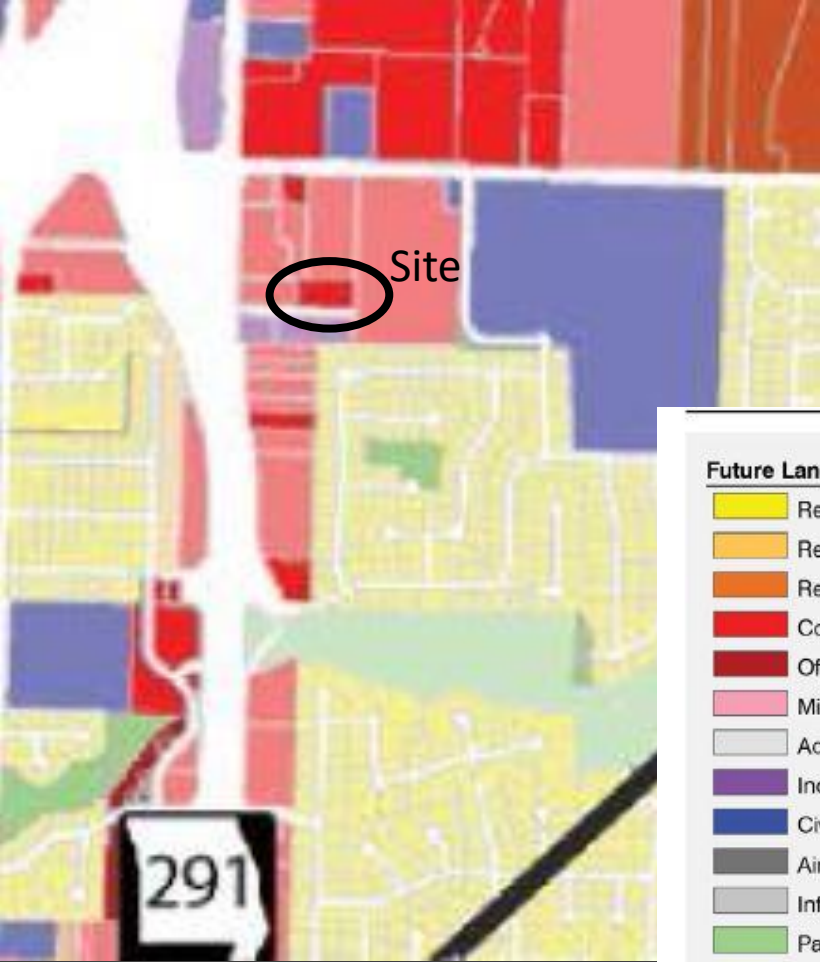
Setback for zoning districts:

	CP-2	PI
Front Yard	15	20
Rear Yard	20	20
Side Yard	10	10

Comprehensive Plan

2021 IGNITE COMP PLAN

FUTURE LAND USE MAP



Future Land Use Categories

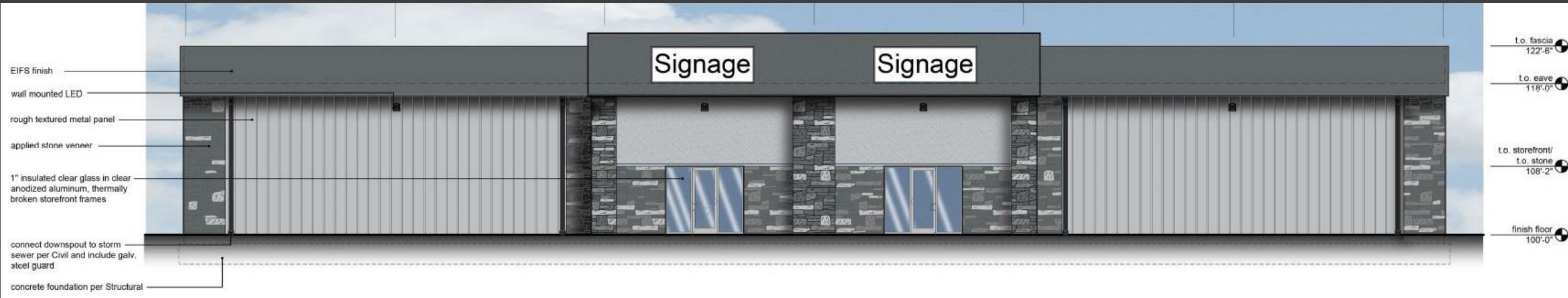
Yellow	Residential, Category 1
Orange	Residential, Category 2
Light Orange	Residential, Category 3
Red	Commercial
Dark Red	Office
Pink	Mixed Use
Light Grey	Activity Centers
Purple	Industrial
Blue	Civic
Dark Grey	Airport
Light Grey	Infrastructure
Green	Parks / Open Space
Light Blue	Water Bodies

--- Property Reserve, Inc. (PRI)

NE Pollard St



Building Elevations



Community Meeting Summary: June 16, 1725 NE Rice Rd

Comments

General questions about the use

Chemical or material storage

Hours of operation

Thank you

Questions?