

# WORLD CUP 2026 PLANNING OVERVIEW

---

June 10, 2025





**366**  
**DAYS UNTIL**  
**FIRST MATCH**



# OBJECTIVES

**01**

Review FIFA/KC2026 background information

**02**

Review the City's structure.

**03**

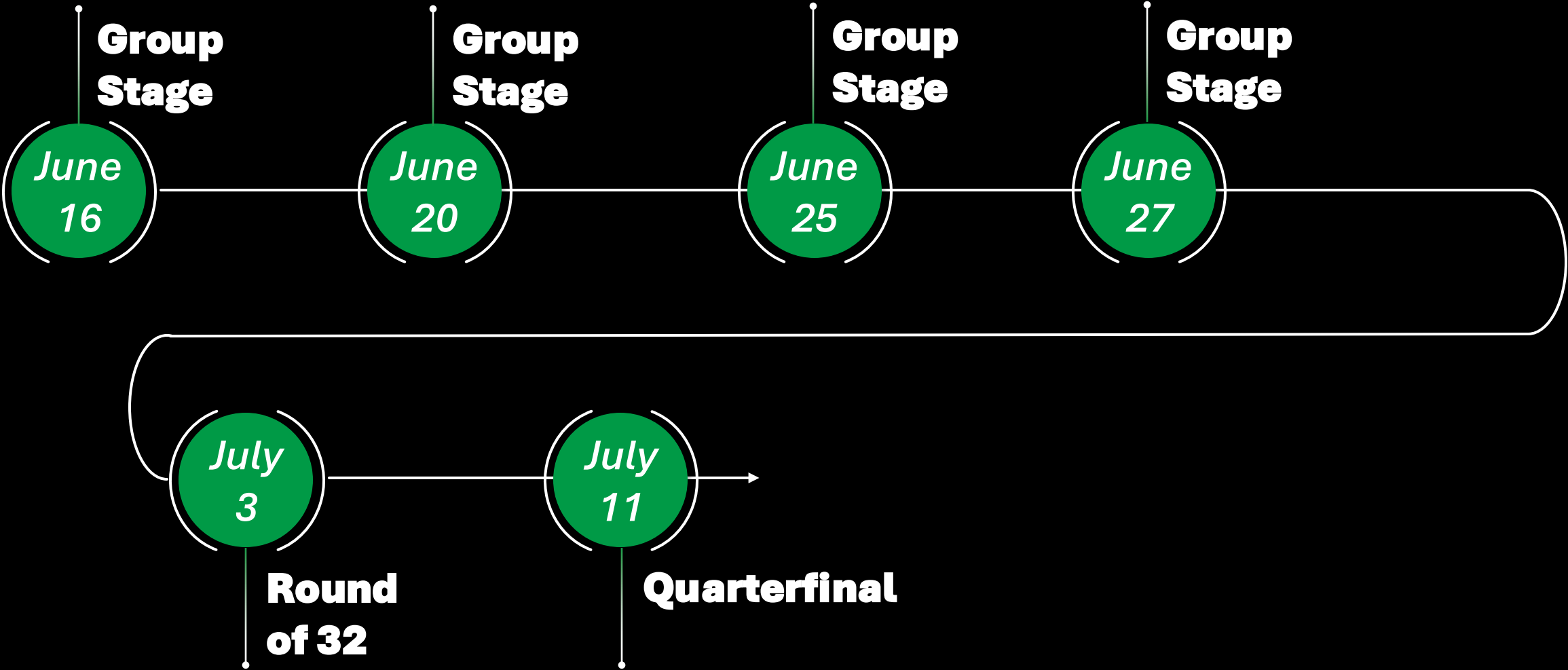
Confirm City's planning to date.

**04**

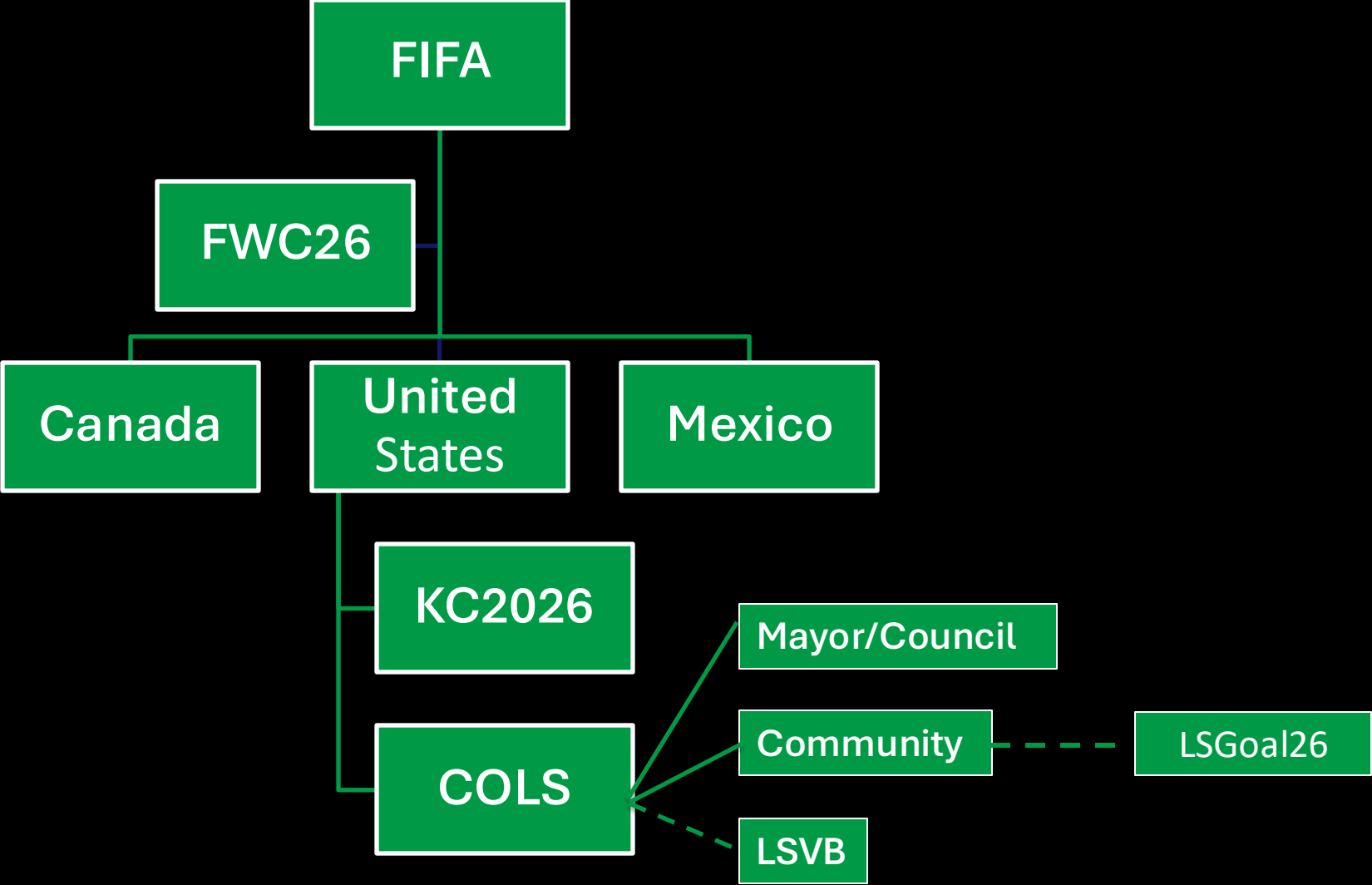
Receive direction from City Council.



# MATCH SCHEDULE



# EVENT ORGANIZATION



# FIVE PLANNING COMMITTEES

DERIVED FROM FIFA ORGANIZING AROUND 18 AREAS OF FOCUS

OPERATIONAL  
PLANNING

INTEL/CYBERSECURITY  
CRITICAL  
INFRASTRUCTURE

HEALTH & MEDICAL/  
FIRE

TACTICAL  
COORDINATION

TRANSPORTATION &  
SECURITY

# PROJECTED TRAVEL PROFILE

Typical World Cup  
Ticket Holder

## Age

16-29	32%
30-49	46%
50-69	22%

**63%** Male

**75%**

Attend FIFA  
Fan Festival

**2.3**

Matches  
attended per  
individual

**68%**

Own a debit or  
credit card

**54%**

International  
Visitors

**9.7 Days**

Average stay  
in U.S.

**41%**

Speak  
English

# POSSIBLE TEAM BASE CAMPS



**COMPASS MINERALS NPC  
(SPORTING KC TRAINING FACILITY)  
KANSAS CITY, KS**



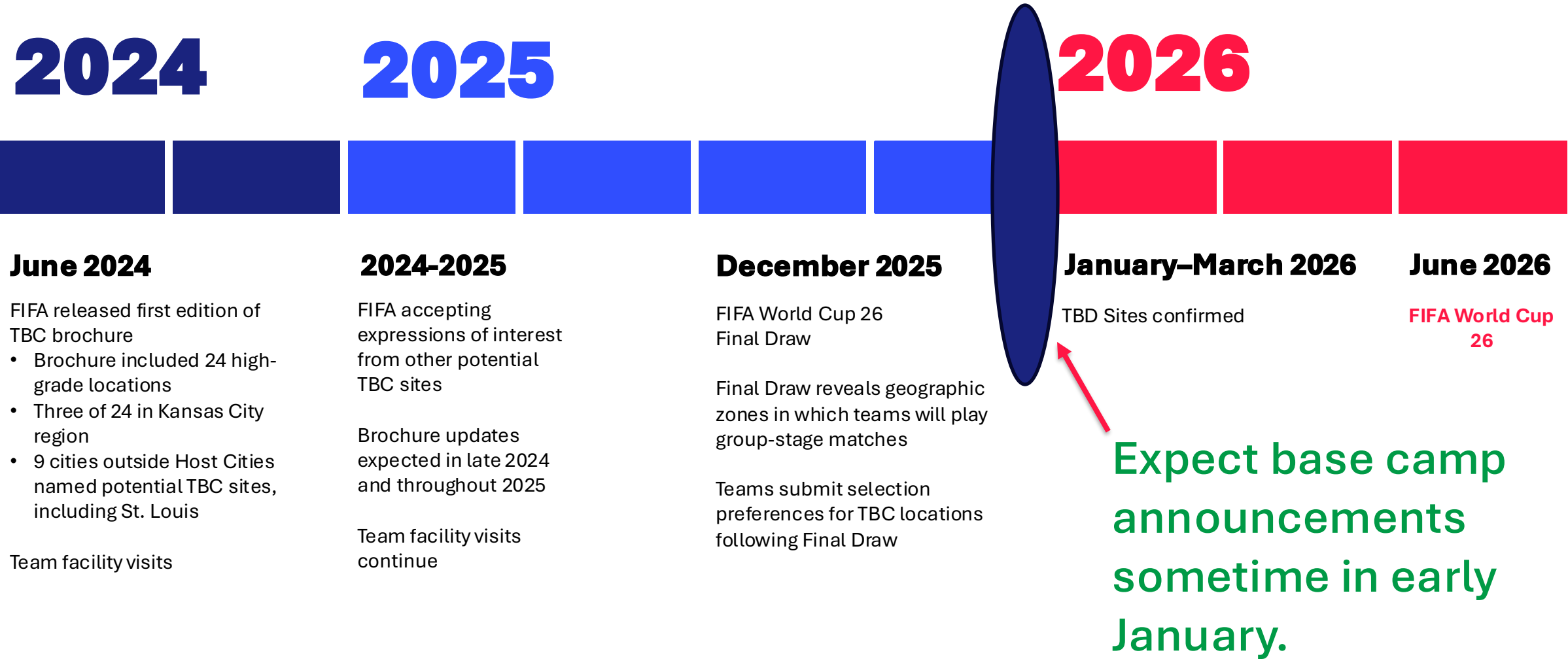
**KC CURRENT TRAINING  
FACILITY  
RIVERSIDE, MO  
PLUS SEVEN HOTELS FOR VIP,  
BASECAMP AND TRAINING  
SITES**



**ROCK CHALK PARK  
LAWRENCE, KS**



# TEAM BASE CAMP TIMELINE



# FIFA FAN FESTIVAL™

**\*\*Preliminary\*\***

**1**

**FAN FEST VENUE**

**24**

**ANTICIPATED OPEN DAYS**

**6**

**OPEN ALL MATCH DAYS**

**50-75K**

**PEAK ATTENDANCE DAY (A+)**

**22.5-32.5K**

**STANDARD ATTENDANCE DAY (B)**

**<22.5K**

**LOW TRAFFIC DAY (C)**



# IMPORTANT EVENT DATES

## Kansas City Matches:

June 16 Group Stage

June 20 Group Stage

June 25 Group Stage

June 27 Group Stage

July 3 Round of 32

July 11 Quarterfinal

## Lee's Summit Events:

June 5 - 7 Downtown Days

July 2 - Legacy Blast

**DOWNTOWN DAYS FINISHES  
SHORTLY BEFORE TEAMS AND  
VISITORS ARRIVE IN REGION.**

**JULY 4, 2026 IS 250TH ANNIVERSARY  
OF THE SIGNING OF THE  
DECLARATION OF INDEPENDENCE.**

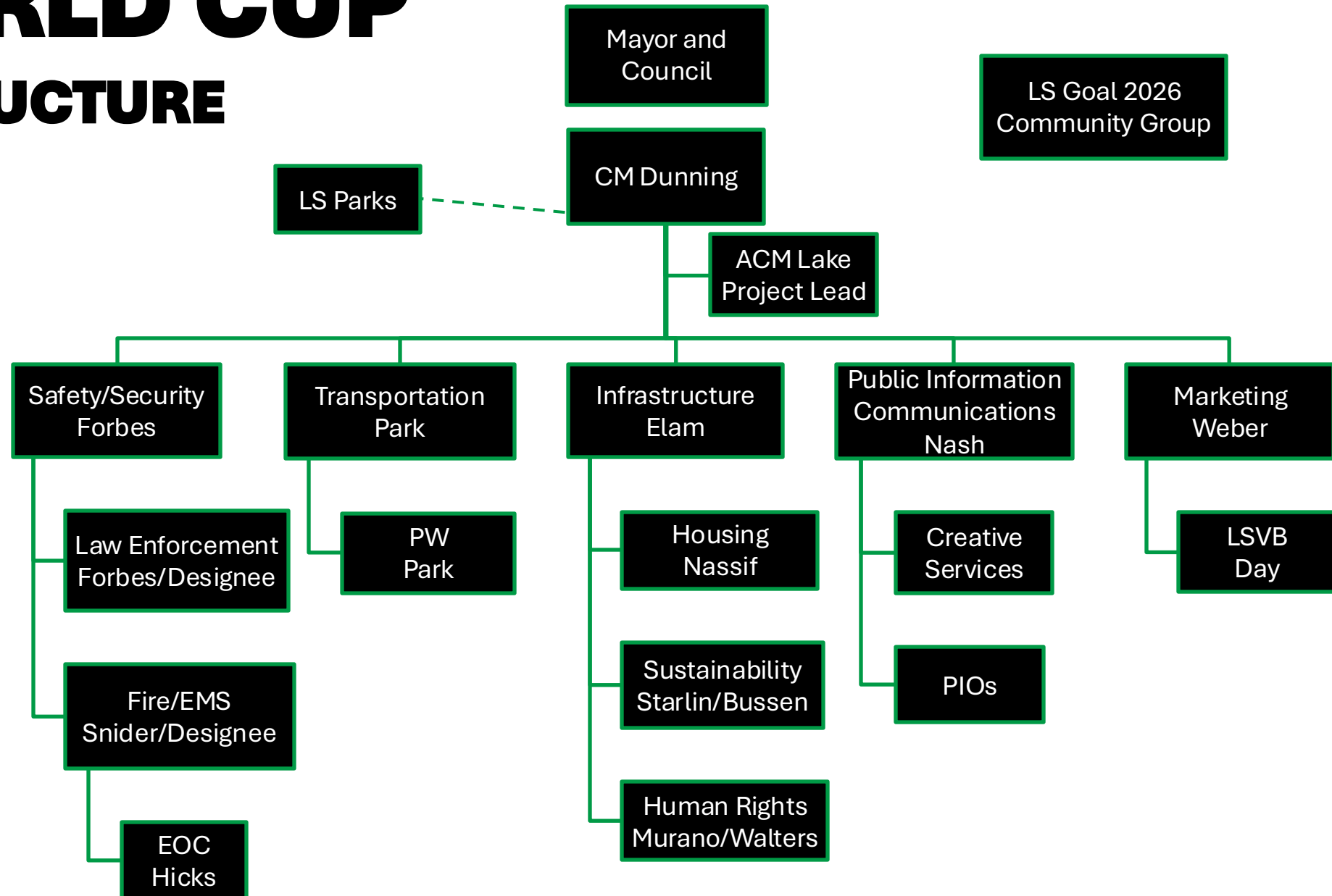


# CITY ORGANIZATION & PLANNING INFORMATION



# CITY WORLD CUP

## PLANNING STRUCTURE



# FACTS & CONSIDERATIONS

## Facts & Assumptions

- Lee's Summit is plugged into regional planning in a multitude of ways.
- Lee's Summit has a site under consideration for a park and ride location.
- A community planning group, LSGoal26 (501c org), was formed for the World Cup.
- Special events within Lee's Summit may increase in June/July 2026.
- Large regional events may trigger resource requests from Lee's Summit.

## Considerations for Council:

- What is the City Council's vision for Lee's Summit during the World Cup?
- How do we engage and support the community (LSGoal26 and others) to create a shared vision?
- What are the desired outcomes?



# REGIONAL COLLABORATION

City staff is engaged in regional planning efforts through KC2026 and Mid-America Regional Council (MARC).

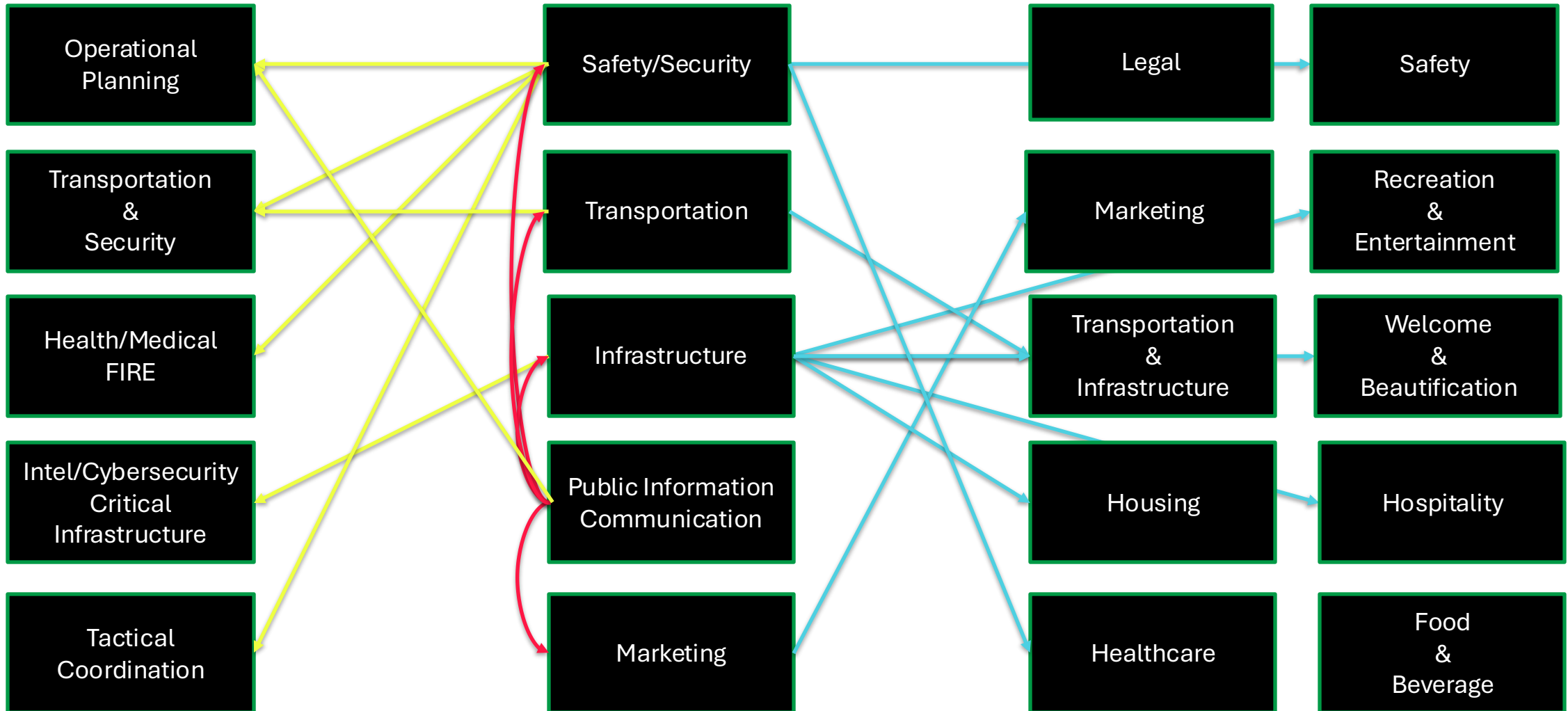
## **MARC Committees**

- Regional Homeland Security  
Coordinating Committee
- Emergency Management
- Public Information Officers

## **KC2026**

- Executive Steering Committee
- Safety and Security Committee
- Transportation Committee
- VisitKC

# CITY EVENT ENGAGEMENT





# SAFETY & SECURITY



# SAFETY AND SECURITY

Resource Allocation & Collaboration  
Law Enforcement, Fire/EMS, Cyber

## Lee's Summit Concerns

- ✓ EOC Operations
- ✓ Uptick in call volume
- ✓ Radio communications
- ✓ Event fatigue
- ✓ Fireworks considerations
- ✓ Mutual Aid requests
- ✓ Network/Cyber Security
- ✓ Manage violations

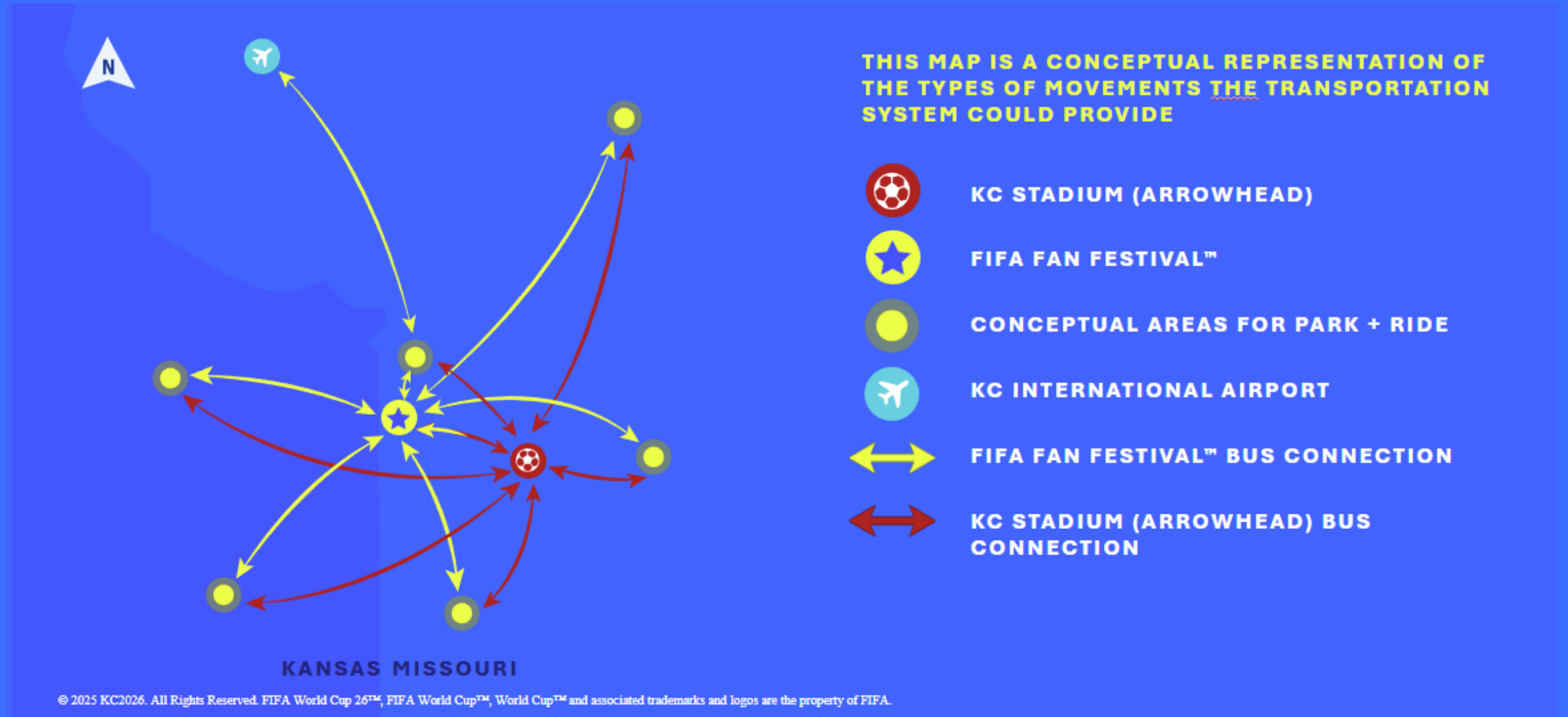
## Regional Concerns

- ✓ Multi-jurisdictional event
- ✓ Training/Exercise
- ✓ Mutual Aid

# TRANSPORTATION



# CONCEPTUAL TRANSPORTATION MAP





# CITY POTENTIAL PARK & RIDE SITE

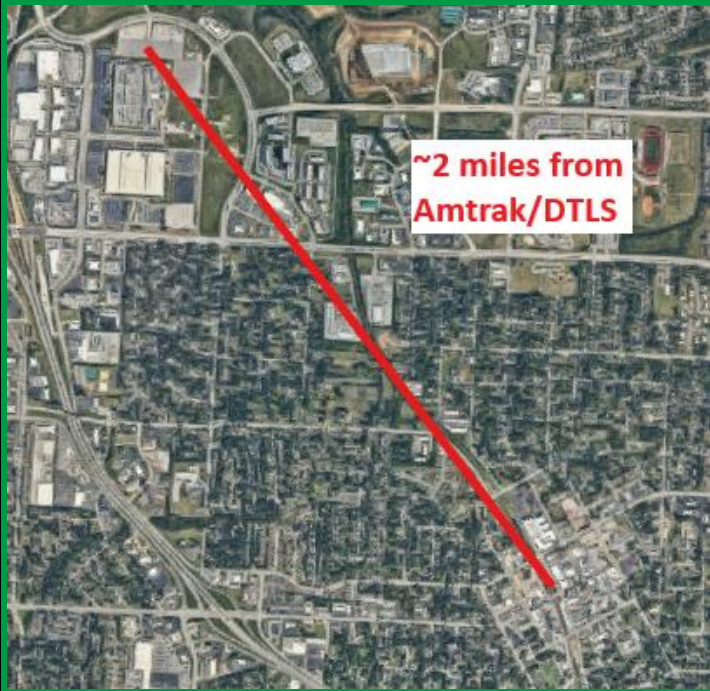
**\*WE ARE PROPOSED - NOT CURRENTLY SELECTED\***

## Parameters

- Area equaling roughly 3,000 Parking Spaces.
  - 1,500 for parking, 1,500 for bus operations
- Proximity to restrooms, food & services for workforce.
- Proximity to the interstate system with easy access.
- Does not conflict with existing business.
- Location avoids residential areas.
- Accommodates secured controlled access.
- Separated ingress & egress.
- ≤30-minute trip to venues.

## Location Benefits

- East of Summit Fair shopping area.
- Proximity to I-470.
- Adjacent to existing hotel.
- Access to Downtown Lee's Summit.
- Eastern lot provides additional space for necessities & events.



# TRANSPORTATION

## CONSIDERATIONS AND ACTION ITEMS

### Action Items

- Address capital project schedule conflicts.
- Right-of-way, traffic control & other permit reviews.
- Staffing needs assessment (e.g., Inspections).
- Amtrak service enhancements (State Legislature/Budget).
- Special event coordination.
- Traffic management coordination & preparation (EOC, MoDOT, KC2026, KC Scout, OGL).

### Considerations

- Shared mobility operations (e.g. scooters)& bike share providers.
- Parking
- Ride-share service accommodations.
- Transit service planning/local & regional park & ride locations.
- Wayfinding/signing.
- New projects.

# AIRPORT OPERATIONS

## Action Items

- Equipment & resource reservation for increased demand.
- Explored Port of Entry with U.S. Customs.
- Preparation of Schedule of Fees.
- Staffing & service needs assessment.
- Marketing "Kansas City-Lee's Summit Regional Airport."

## Considerations

- Terminal building opening/partial opening.
- Jet Parking capacity expansion plans & contingencies.
- Scheduling and reservations.
- Charter services.



# INFRASTRUCTURE





# CODE/POLICY CONSIDERATIONS

## Permits

- Special Events
- Fireworks
- Alcohol

## Short-term Rentals

## Business Licenses

- Waiver or modification considerations.
- Pop-up vendors.

## Signage

- Streamlining the approval process.



# PHYSICAL INFRASTRUCTURE CONSIDERATIONS



Temporary installations at fan zones & public spaces.

- Specifically, activity nodes & downtown



Parking enforcement & requirements.



Outdoor sales space requirements.



Solid Waste

- Local impacts & planning
- Trash/litter management.
- Waste & recycling receptacles.
- Waste collection & removal.
- World Cup sustainability expectations (FIFA).

# **PUBLIC INFORMATION COMMUNICATIONS**



# COMMUNICATIONS/PUBLIC INFO

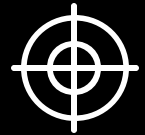




# MARKETING



# LEE'S SUMMIT VISITORS BUREAU



Lee's Summit Visitors Bureau will continually market Lee's Summit coordination.

1

LSGoal26

2

Downtown  
Lee's Summit  
Main Street

3

Chamber

4

Lee's Summit  
Economic  
Development  
Council

5

City

# WRAP UP



# BUDGET AND RESOURCE CONSIDERATIONS

## WHAT CITY EXPENSES DO WE ANTICIPATE?

- Enhancements to Infrastructure
- Marketing
- Overtime
  - Event Support
- Programming
  - Green Street
  - Cultural Arts
- Communications
  - Signage/Wayfinding

Other considerations include limiting leave requests, resource fatigue, & volunteer limitations/fatigue.



# WHERE DO WE GO FROM HERE?

