

NW CHIPMAN RD

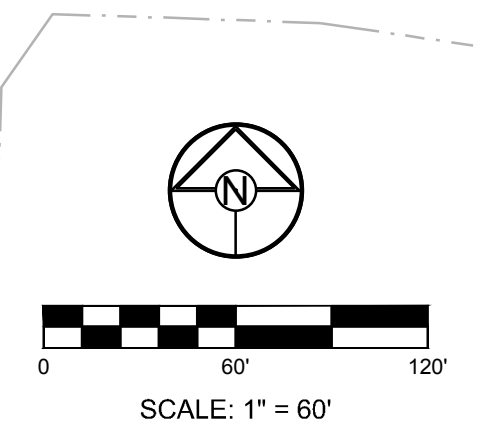
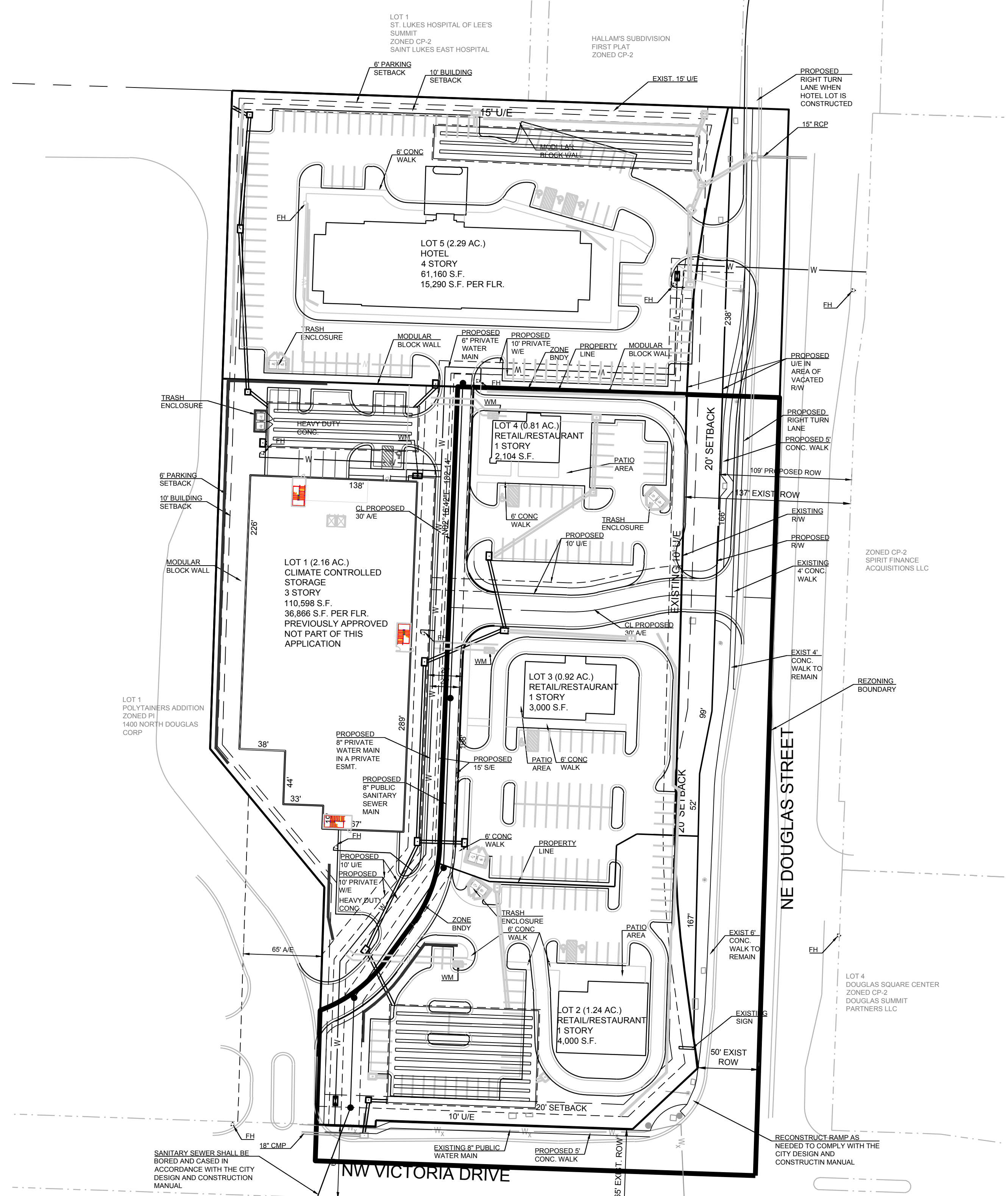
SECTION 31-48-31

LOCATION MAP
SCALE 1" = 2000'

SCHLAGEL & ASSOCIATES, P.A.
Engineers • Planners • Surveyors • Landscape Architects
14920 West 107th Street • Lenexa, Kansas 66215
(913) 492-5188 • Fax: (913) 492-8400
WWW.SCHLAGELASSOCIATES.COM
Missouri State Certificates of Authority
#E2002003690 • #AC2001005237 • #S2002008699F



**OAKVIEW STORAGE
PRELIMINARY DEVELOPMENT PLAN
NE DOUGLAS ROAD AND NW VICTORIA DRIVE
LEE'S SUMMIT, MISSOURI**



FLOOD NOTE:
According to the Flood Insurance Rate Map of FEMA panel 409 of 625 for map number 20095C0409G dated January 20, 2017 and panel 417 of 625 for map number 29095C0417G dated January 20, 2017, the project lies outside of any identified FEMA floodplain.

OWNER/DEVELOPER: UNIVERSITY OF MASSACHUSETTS FOND INC.
1 BEACON STREET 32ND FLOOR BOSTON, MA 02108

DEVELOPER: OAK VIEW CAPITAL PARTNERS, LLC
201 HAWKS RIDGE TRAIL COLLEYSVILLE, TX 76034
p 214-460-8442

REVISION DATE	DESCRIPTION
4-3-18	CITY COMMENTS
4-23-18	CITY COMMENTS
4-24-18	CITY COMMENTS
4-24-18	CITY COMMENTS
4-24-18	CITY COMMENTS
4-24-18	CITY COMMENTS
4-24-18	CITY COMMENTS
4-24-18	CITY COMMENTS
4-24-18	CITY COMMENTS
4-24-18	CITY COMMENTS

UTILITY PLAN

SHEET
C3.0
OF

I:\PROJECTS\2017\17-195\3.0 Design\3.0 DWG Plans\2.0 PDP\17-135 PDP_U.P. dwg, 4/23/2018 4:43:54 PM, 1:1