

Transit

November 14, 2022

Susan Barry, PE, PTOE
City Traffic Engineer



LEE'S SUMMIT
MISSOURI



Yours Truly

RideKC Lee's Summit Express

- Operated by KCATA
- Bus route 550
- Commuter-based trips
- Monday – Friday
- Two AM trips, two PM trips
(Reverse commute also available.)
- No cost



550 Lee's Summit Express

Effective April 1, 2019
Efectivo abril 1, 2019



550 Lee's Summit Express

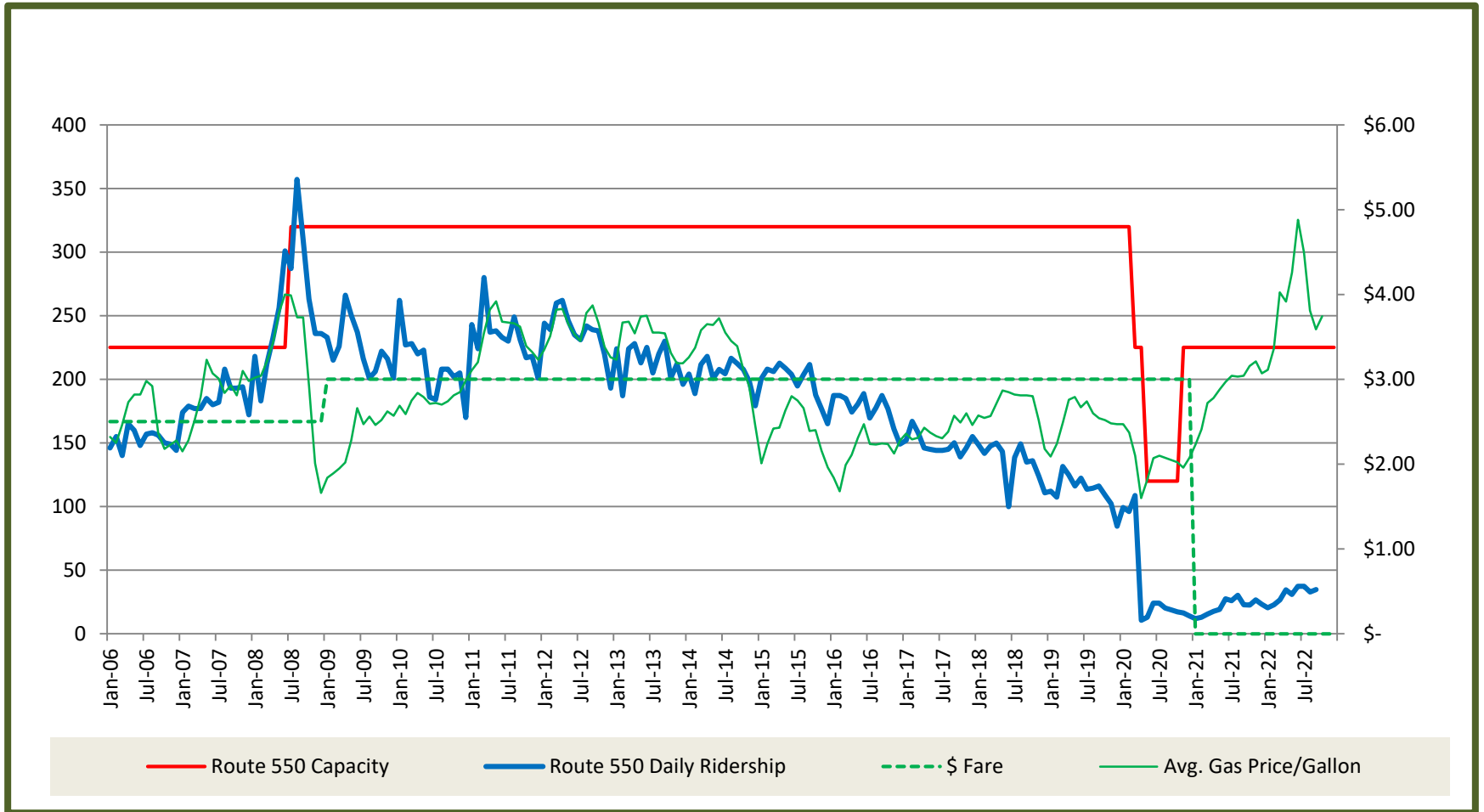
- LEGEND**
Líneas
- Regular Route / Ruta regular
 - Non-Stop Service / Servicio sin interrupciones
 - Schedule Time Point / Hora de llegada parada de autobuses
 - Transfer Options / Opciones de transbordó
 - Major Transfer Hub / Ubicación de transferencia
 - Streetcar Route / Ruta del tranvía
 - FREE Park & Ride / Aparcamiento gratis para viajeros de autobuses
 - Bike Share Station / Estación de bicicletas compartidas

Monday-Friday Schedule

NORTHBOUND TO DOWNTOWN KANSAS CITY, MO							SOUTHBOUND TO LEE'S SUMMIT, MO							
MAP	A	B	C	D	G	E	MAP	G	F	E	D	H	B	A
	350 Hwy. & Chipman Park & Ride	Unity Village on Unity Circle	Cherry St. on 13th St.	11th St. on Grand Blvd.	Broadway Blvd. on Pershing Rd.	Pershing Rd. on Grand Blvd.		Broadway Blvd. on Pershing Rd.	Main St. on Pershing Rd.	Pershing Rd. on Grand Blvd.	11th St. on Grand Blvd.	Locust St. on 12th St.	Unity Village on Unity Circle	350 Hwy. & Chipman Park & Ride
A.M.	5:30	-	5:59	6:04	6:11	6:14		-	-	6:19	-	-	6:51	6:56
	7:00	-	7:30	7:36	7:43	7:46		3:30	3:32	-	3:41	3:46	-	4:20
P.M.	4:40	4:49	-	-	5:26	-		5:30	5:32	-	5:41	5:46	-	6:20



Ridership - Commuter Express



Ridership details

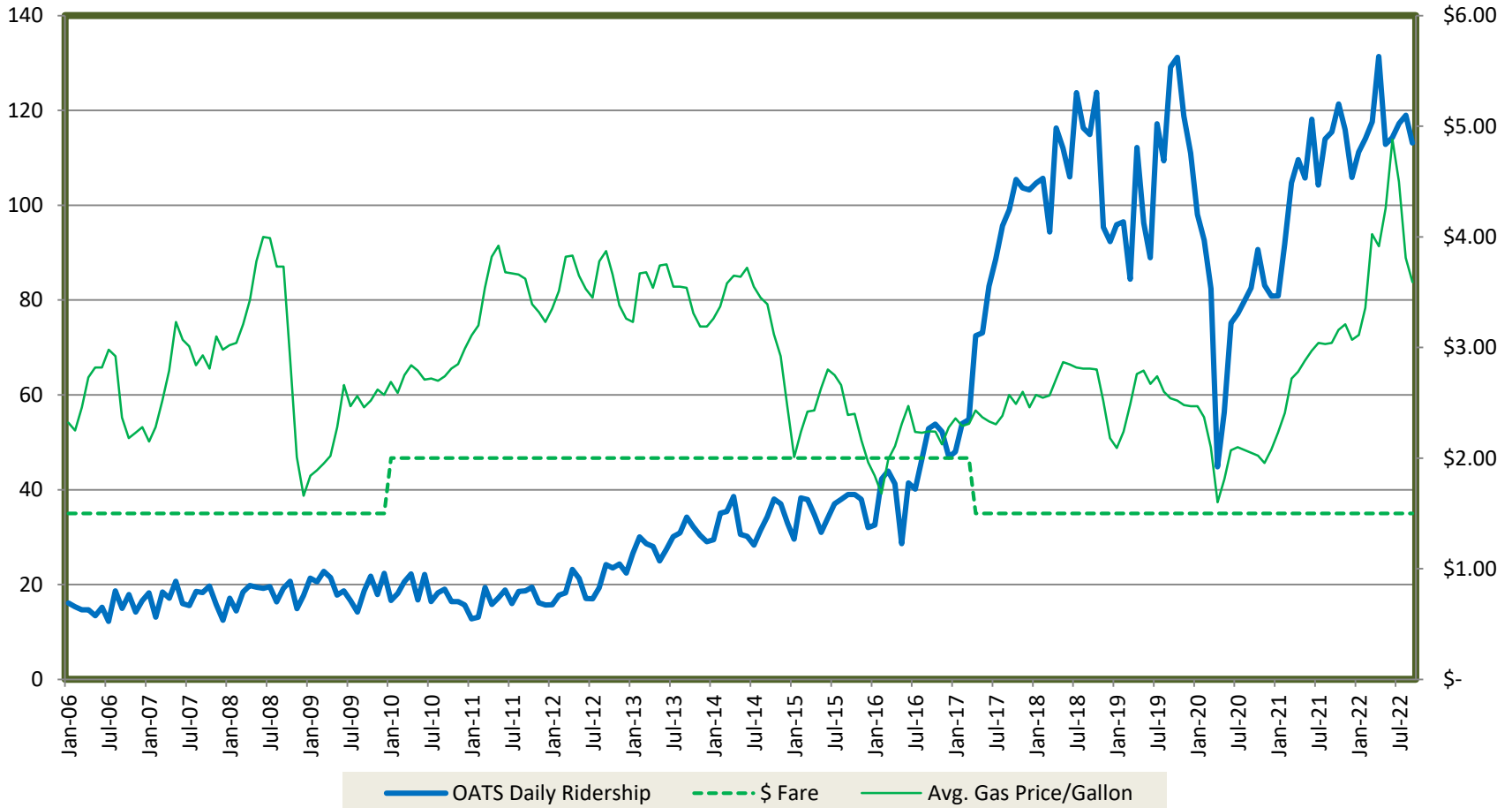
Month	2021	2022
January	251	410
February	260	433
March	355	610
April	387	726
May	403	647
June	602	821
July	572	746
August	664	753
September	523	730
October	473	
November	559	
December	532	

RideKC Lee's Summit

- Operated by OATS
- On-demand trips within Lee's Summit (and service to TMC – Lakewood)
- Advanced reservation required
- Cost \$1.50 per trip
- Monday – Friday
- 7:00 am to 5:30 pm
- Six vehicles



Ridership - On-Demand Transit Provided by OATS



Ridership details

Month	2021	2022
January	1700	2224
February	1836	2168
March	2409	2704
April	2411	2759
May	2220	2369
June	2599	2514
July	2294	2345
August	2507	2736
September	2655	2375
October	2548	
November	2434	
December	2434	

Renewal of contracts - 2023

- KCATA – Lee’s Summit Express
 - \$179,942 (5% increase over 2022)
 - \$8,000 management of OATS contract
- OATS – On-Demand Transit
 - \$40/hour (\$5/hour increase over 2022)
- New buses - on hold due to supply chain issues

What's next?

- Additional fixed routes
 - Lee's Summit to Independence Transit Center
 - Lee's Summit to Three Trails Crossing area (serving Longview Community College, Cerner)
- Provides a vital link to KCATA system

cityofls.net/public-works/traffic-transit/transit-services
ridekc.org (816-221-0660)
oatstransit.org (816-380-7433)

Susan Barry, PE, PTOE
City Traffic Engineer

Susan.Barry@cityofls.net

816-969-1800



LEE'S SUMMIT
MISSOURI



Yours Truly