

Summit Self Storage SUP renewal

Application #PL2020-371

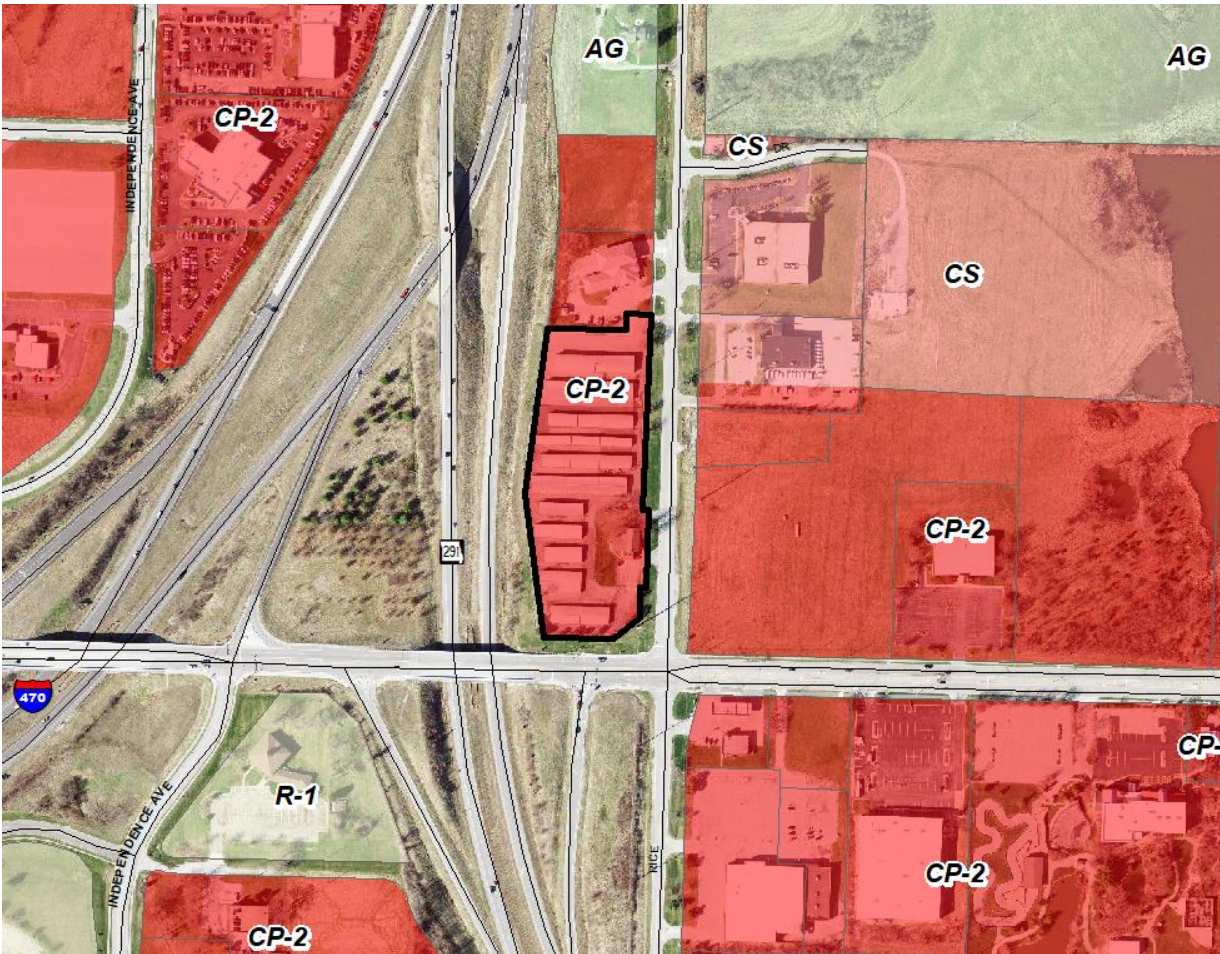
February 25, 2021



LEE'S SUMMIT
MISSOURI

Yours Truly



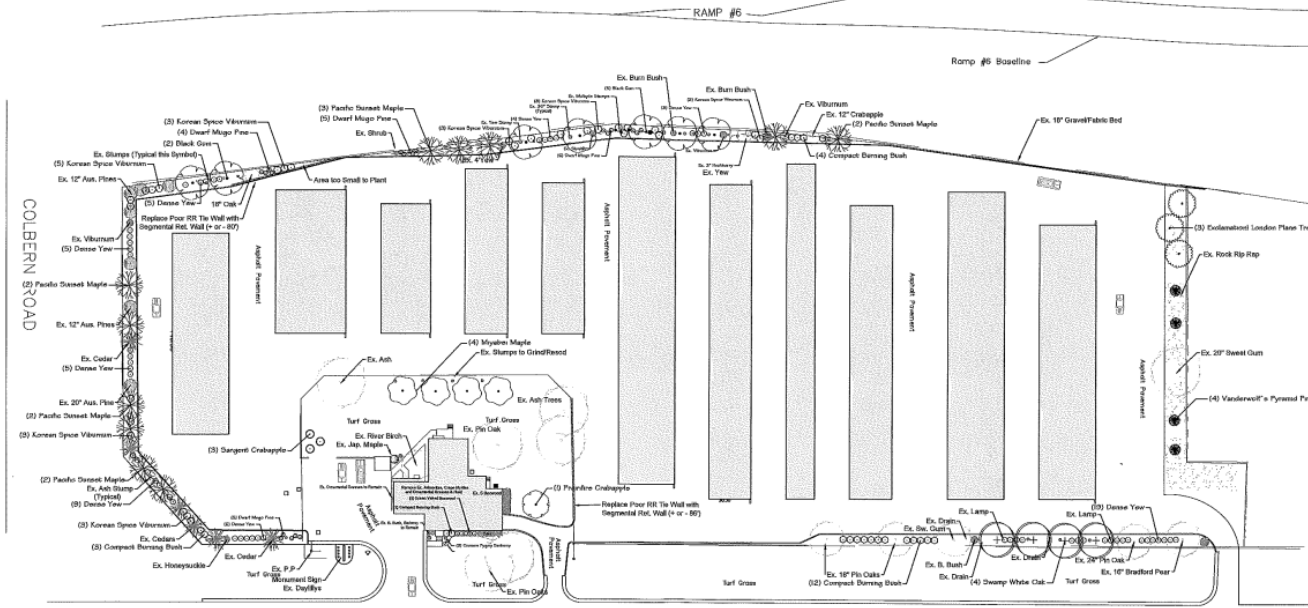


North: CP-2 – Fire Station No. 2

South: M-291 Hwy

East: CP-2 and CS – Post Office and vacant property

West: I-470/M-291 Hwy interchange



OLD MISSOURI STATE HIGHWAY ROUTE No. 291



BRAD CLAYTON BARRETT
and Clayton Barrett, ASLA, LLC

- Existing zoning: CP-2
- 4.74 acres
- 11 storage buildings (approx. 63,200 sq. ft.) + office building (approx. 3,500 sq. ft.)
- 0.32 FAR

- Lawful non-conforming use in the CP-2 zoning district.
- Use in existence approximately 36 years.
 - Original SUP (Ord. 2641) approved June 4, 1985, for period of 20 years.
 - SUP renewal (Ord. 5107) on March 1, 2001, for a period of 20 years.
- SUP renewal (Ord. 5107) :
 - Conditions of approval included:
 - Reduction of exterior lighting spillover by 50%.
 - Painting of orange doors a shade of light tan or light brown to blend in with building.
 - Inventory of existing trees and shrubs to replace missing, diseased or dead landscaping material to ensure the integrity of the original landscaping screening is maintained.
 - City issued a letter confirming fulfillment of conditions of approval on January 23, 2002. Staff has re-confirmed compliance as part of the subject application review process.
- No proposed building expansions or changes to the site.
- Existing use has little impact on existing public facilities and services.

1. The special use permit shall be approved for a period of 20 years.