

**1** EXTERIOR ELEVATION  
1/4" = 1'-0"



**2** EXTERIOR ELEVATION  
1/4" = 1'-0"

KEYNOTES - EXTERIOR ELEVATIONS	
NO.	DESCRIPTION
1	REPAINT EXISTING STUCCO/EIFS AREA
2	POWERWASH ALL BRICK AND CMU SURFACES
3	NEW USI-18 SIGNAGE UNDER SEPARATE SIGNAGE PACKAGE BY STRATUS
4	REPLACE STUCCO/EIFS AREA WITH BRICK TO MATCH ADJACENT INCLUDING SOLDIER COURSE BANDING
5	REPLACE EXISTING WOOD GATE WITH NEW METAL GATE
6	NEW CLEARANCE SIGNAGE UNDER SEPARATE SIGNAGE PACKAGE BY STRATUS
7	NEW USI-24 SIGNAGE UNDER SEPARATE SIGNAGE PACKAGE BY STRATUS
8	NEW COMPOSITE METAL PANEL SYSTEM
9	NEW METAL CANOPY SYSTEM
10	NEW THRU-WALL SCUPPER IN EXISTING OPENING. MATCH EXISTING METAL COPING COLOR
11	NEW "OPEN/CLOSED" SIGNAGE - CENTER ON LANE

GENERAL NOTES - EXTERIOR ELEVATIONS	
A.	SEE SHEET G003 FOR EXTERIOR MATERIAL SCHEDULE.
B.	ALL FINISH MATERIALS TO BE VERIFIED WITH ARCHITECT PRIOR TO CONSTRUCTION.
C.	ALL SIGNAGE BY STRATUS UNDER SEPARATE SIGNAGE PACKAGE
D.	ANY RETURNS OR BLIND ELEVATIONS NOT SHOWN SHALL BE SIMILAR IN MATERIAL AND MAKEUP TO ADJACENT CONDITIONS OR SIMILAR CONDITIONS.
E.	DO NOT SCALE DRAWINGS. REFER TO FLOOR PLAN ON SHEET A101 AND WALL SECTIONS ON SHEETS A510 AND A511.

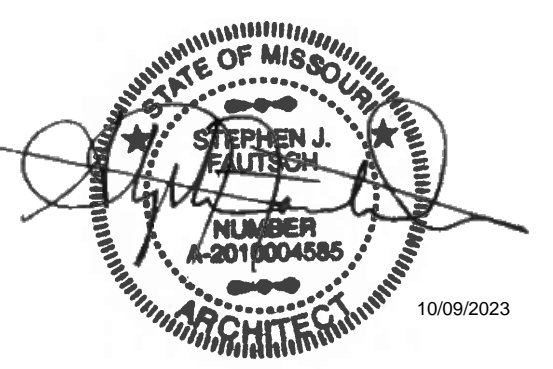


**RSP Architects**  
1220 Marshall Street NE  
Minneapolis, MN 55413-1036  
612.677.3100  
612.677.7499 fax  
www.rsparch.com

**Project Contact:**  
Bart Palmgren  
612.677.7203

**Consultants**

**Certification**



Name: **STEPHEN J. FAUTSCH**  
License Number: **2010004585** License Expiration: **12/31/2024**  
Date Signed: **OCTOBER 6, 2023**

**Project For**  
**usbank**  
1599 NE Douglas Street,  
Lee's Summit, MO 64086

Project No. **14853FA658**  
Drawn By: **BP**  
Checked By: **DC**  
Date: **10/06/2023**

NOTICE: The designs shown and described herein, including all technical drawings, graphics, and models thereof, are proprietary and cannot be copied, duplicated or commercially exploited, in whole or in part, without express written permission of RSP Architects. These are available for limited review and evaluation by clients, consultants, contractors, government agencies, vendors and other personnel only in accordance with this Notice.  
© Copyright RSP Architects 2023. All rights reserved.

Sheet Issues / Revisions		
No.	Date	Description

**ALL BIDDING QUESTIONS TO BE DIRECTED TO THE JLL PROJECT MANAGERS. SEE SHEET G000.**

EXTERIOR ELEVATIONS

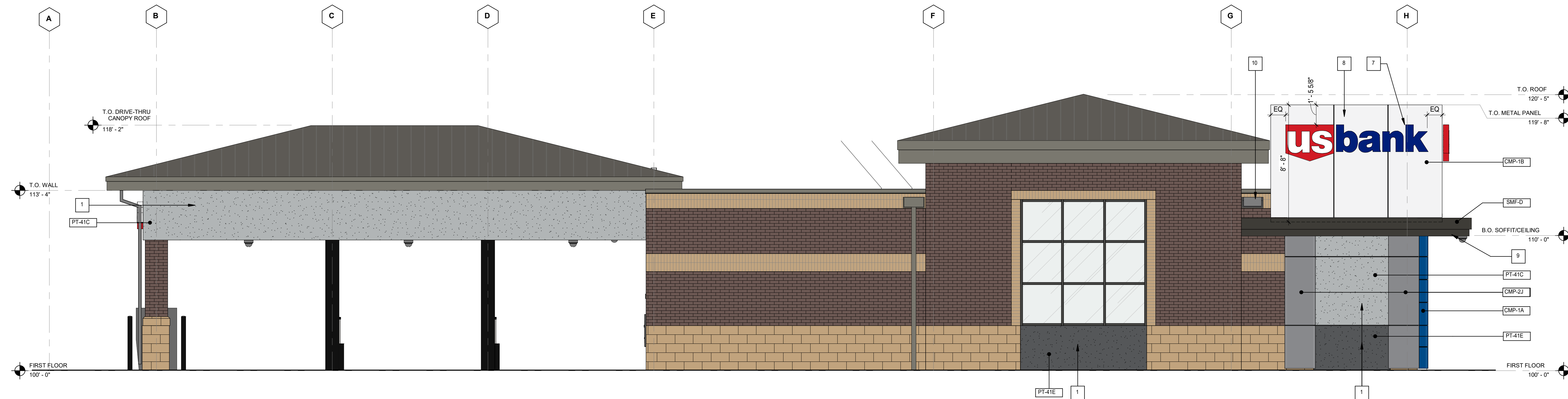
**A401**

**GENERAL NOTES - EXTERIOR ELEVATIONS**

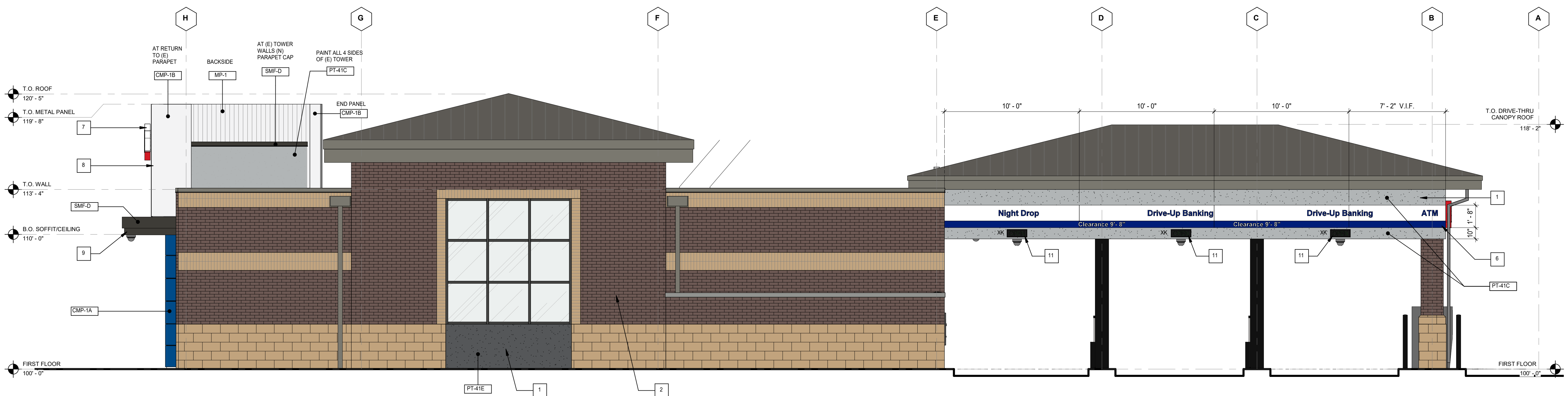
- A. SEE SHEET 0003 FOR EXTERIOR MATERIAL SCHEDULE.
- B. ALL FINISH MATERIALS TO BE VERIFIED WITH ARCHITECT PRIOR TO CONSTRUCTION.
- C. ALL SIGNAGE BY STRATUS UNDER SEPARATE SIGNAGE PACKAGE
- D. ANY RETURNS OR BLIND ELEVATIONS NOT SHOWN SHALL BE SIMILAR IN MATERIAL AND MAKEUP TO ADJACENT CONDITIONS OR SIMILAR CONDITIONS.
- E. DO NOT SCALE DRAWINGS. REFER TO FLOOR PLAN ON SHEET A101 AND WALL SECTIONS ON SHEETS A510 AND A511.

**KEYNOTES - EXTERIOR ELEVATIONS**

NO.	DESCRIPTION
1	REPAINT EXISTING STUCCO/EIFS AREA
2	POWERWASH ALL BRICK AND CMU SURFACES
3	NEW USI-18 SIGNAGE UNDER SEPARATE SIGNAGE PACKAGE BY STRATUS
4	REPLACE STUCCO/EIFS AREA WITH BRICK TO MATCH ADJACENT INCLUDING SOLDIER COURSE BANDING
5	REPLACE EXISTING WOOD GATE WITH NEW METAL GATE
6	NEW CLEARANCE SIGNAGE UNDER SEPARATE SIGNAGE PACKAGE BY STRATUS
7	NEW USI-24 SIGNAGE UNDER SEPARATE SIGNAGE PACKAGE BY STRATUS
8	NEW COMPOSITE METAL PANEL SYSTEM
9	NEW METAL CANOPY SYSTEM
10	NEW THRU-WALL SCUPPER IN EXISTING OPENING. MATCH EXISTING METAL COPING COLOR
11	NEW "OPEN/CLOSED" SIGNAGE - CENTER ON LANE



**1** EXTERIOR ELEVATION  
1/4" = 1'-0"



**2** EXTERIOR ELEVATION  
1/4" = 1'-0"

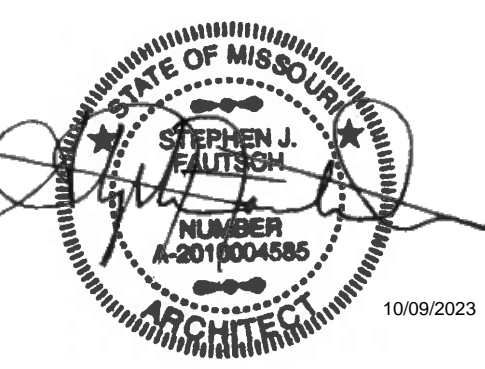


**RSP Architects**  
1220 Marshall Street NE  
Minneapolis, MN 55413-1036  
612.677.3100  
612.677.7499 fax  
www.rsparch.com

**Project Contact:**  
Bart Palmgren 612.677.7203

**Consultants:**

**Certification:**



Name: **STEPHEN J. FAUTSCH**  
License Number: **2010004585**  
License Expiration: **12/31/2024**  
Date Signed: **OCTOBER 6, 2023**

**Project For**  
**usbank**  
1599 NE Douglas Street,  
Lee's Summit, MO 64086

Project No. **14853FA658**  
Drawn By **BP**  
Checked By **DC**  
Date **10/06/2023**

NOTICE: The designs shown and described herein, including all technical drawings, graphics, and models thereof, are proprietary and cannot be copied, duplicated or commercially exploited, in whole or in part, without express written permission of RSP Architects. These are available for limited review and evaluation by clients, consultants, contractors, government agencies, vendors and other personnel only in accordance with this Notice.  
© Copyright RSP Architects 2023. All rights reserved.

**Sheet Issues / Revisions**

No.	Date	Description

**ALL BIDDING QUESTIONS TO BE DIRECTED TO THE JLL PROJECT MANAGERS. SEE SHEET 0000.**

EXTERIOR ELEVATIONS

**A402**