



PROJECT NAME: _____ ATTIC STORAGE

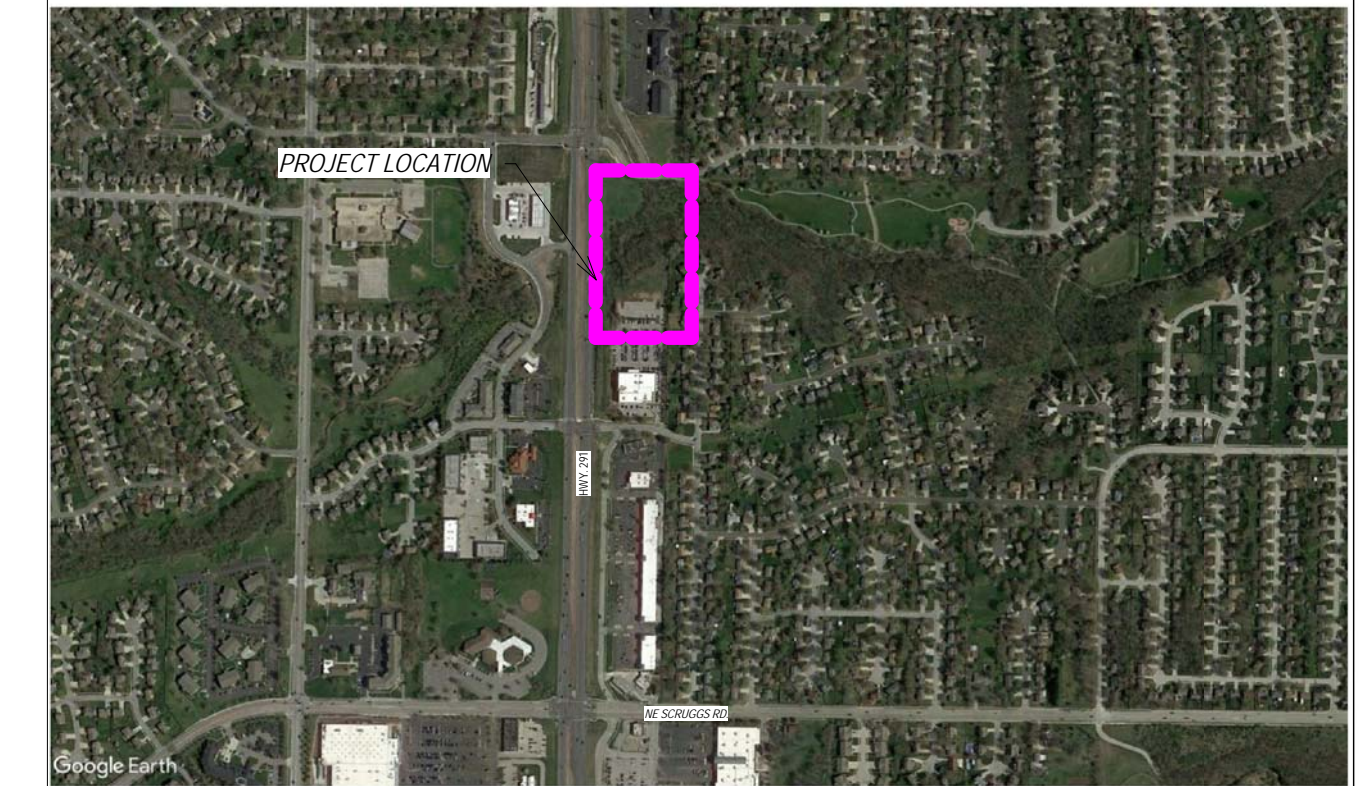
PROJECT DESCRIPTION: _____ PROPOSED SELF-STORAGE FACILITY WITH CLIMATE CONTROL

PROJECT LOCATION: _____ 920 NE DEERBROOK ST., LEE'S SUMMIT, MISSOURI

CONTRACTOR CONTACT: _____ STRICKLAND CONSTRUCTION
ATTN: ROGERS STRICKLAND
720 SOUTH ROGERS ROAD, SUITE B
OLATHE, KS 66062
P) 913-764-7000

ARCHITECT: _____ HERNLY ASSOCIATES, INC.
ATTN: STAN HERNLY
1100 RHODE ISLAND ST.
LAWRENCE, KANSAS 66044
P) 785-749-5806
F) 785-749-1515

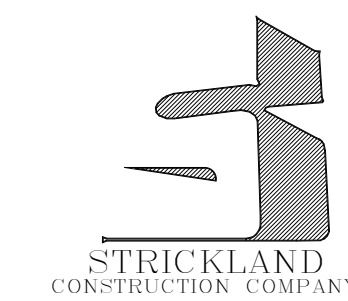
PROJECT INFORMATION



PROJECT LOCATION



ARCHITECT
Hernly Associates, Inc.
1100 Rhode Island St.
Lawrence, KS 66044
P) 785-749-5806
F) 785-749-1515



GENERAL CONTRACTOR
Strickland Construction
720 S. Rogers Road, Suite 'B'
Olathe, KS 66062
P) 913-764-7000

ATTIC STORAGE OF LEE'S SUMMIT
920 NE DEERBROOK ST., LEE'S SUMMIT, MISSOURI



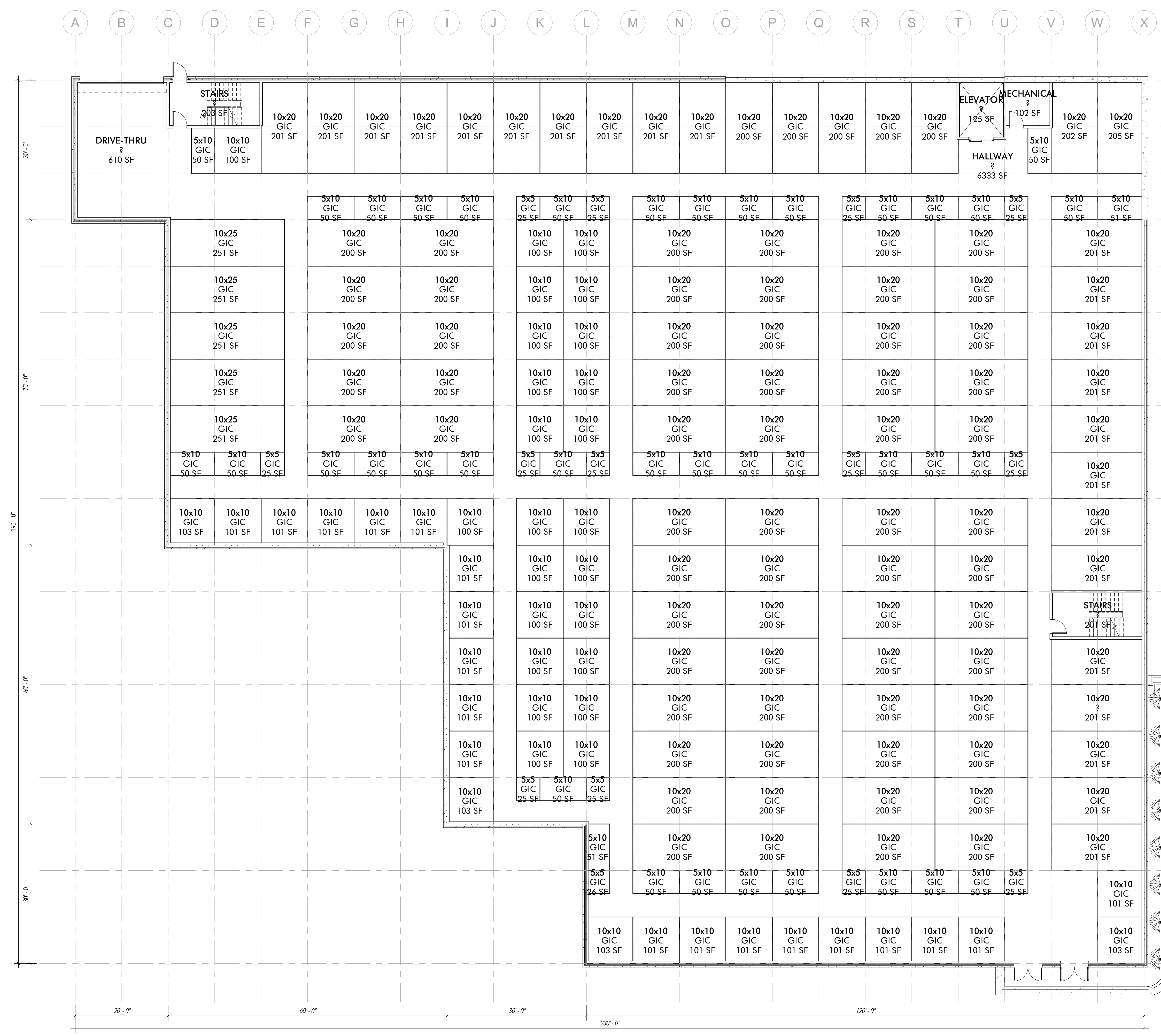
1100 Rhode Island St.
Lawrence, Kansas
66044
785 - 749 - 5806
FAX 785 - 749 - 1515

COVER SHEET

Date: _____ Issue Date
Drawn by: _____ WCTJ
Checked by: _____ Checker
Revisions: _____

| SHEET INDEX | |
|-------------|-------------------------|
| NUMBER | NAME |
| A0.0 | COVER SHEET |
| A1.0 | UNIT MIX - LEVEL 1 |
| A1.1 | UNIT MIX - LEVEL 2 |
| A1.2 | UNIT MIX - LEVEL 3 |
| A2.0 | ELEVATIONS |
| A2.1 | ELEVATIONS |
| A3.0 | PERSPECTIVES |
| AS1.0 | ARCHITECTURAL SITE PLAN |

A0.0



| UNIT MIX SCHEDULE | | | |
|-------------------|-------|--------|------------------|
| UNIT SIZE/NAME | Count | AREA | UNIT TYPE/NUMBER |
| 5x5 | 26 | 25 SF | GIC |
| 5x5 | 14 | 25 SF | UIC |
| 5x10 | 79 | 50 SF | GIC |
| 5x10 | 48 | 50 SF | UIC |
| 10x10 | 80 | 100 SF | GIC |
| 10x10 | 62 | 100 SF | UIC |
| 10x15 | 34 | 150 SF | GIC |
| 10x15 | 31 | 150 SF | UIC |
| 10x20 | 1 | 200 SF | GIC |
| 10x20 | 136 | 200 SF | GIC |
| 10x20 | 45 | 200 SF | UIC |
| 10x25 | 20 | 250 SF | GIC |
| 10x25 | 5 | 300 SF | GIC |
| TOTAL | 581 | | |

ATTIC STORAGE OF LEE'S SUMMIT
 920 NE DEERBROOK ST., LEE'S SUMMIT, MISSOURI

1ST LEVEL
34,200 S.F.

| UNIT MIX SCHEDULE - LEVEL 1 | | | |
|-----------------------------|-------|--------|------------------|
| UNIT SIZE/NAME | Count | AREA | UNIT TYPE/NUMBER |
| 5x5 | 14 | 25 SF | GIC |
| 5x10 | 39 | 50 SF | GIC |
| 10x10 | 47 | 100 SF | GIC |
| 10x20 | 1 | 200 SF | GIC |
| 10x20 | 91 | 200 SF | GIC |
| 10x25 | 5 | 250 SF | GIC |
| TOTAL | 197 | | |

1 UNIT MIX - LEVEL 1
3/32" = 1'-0"

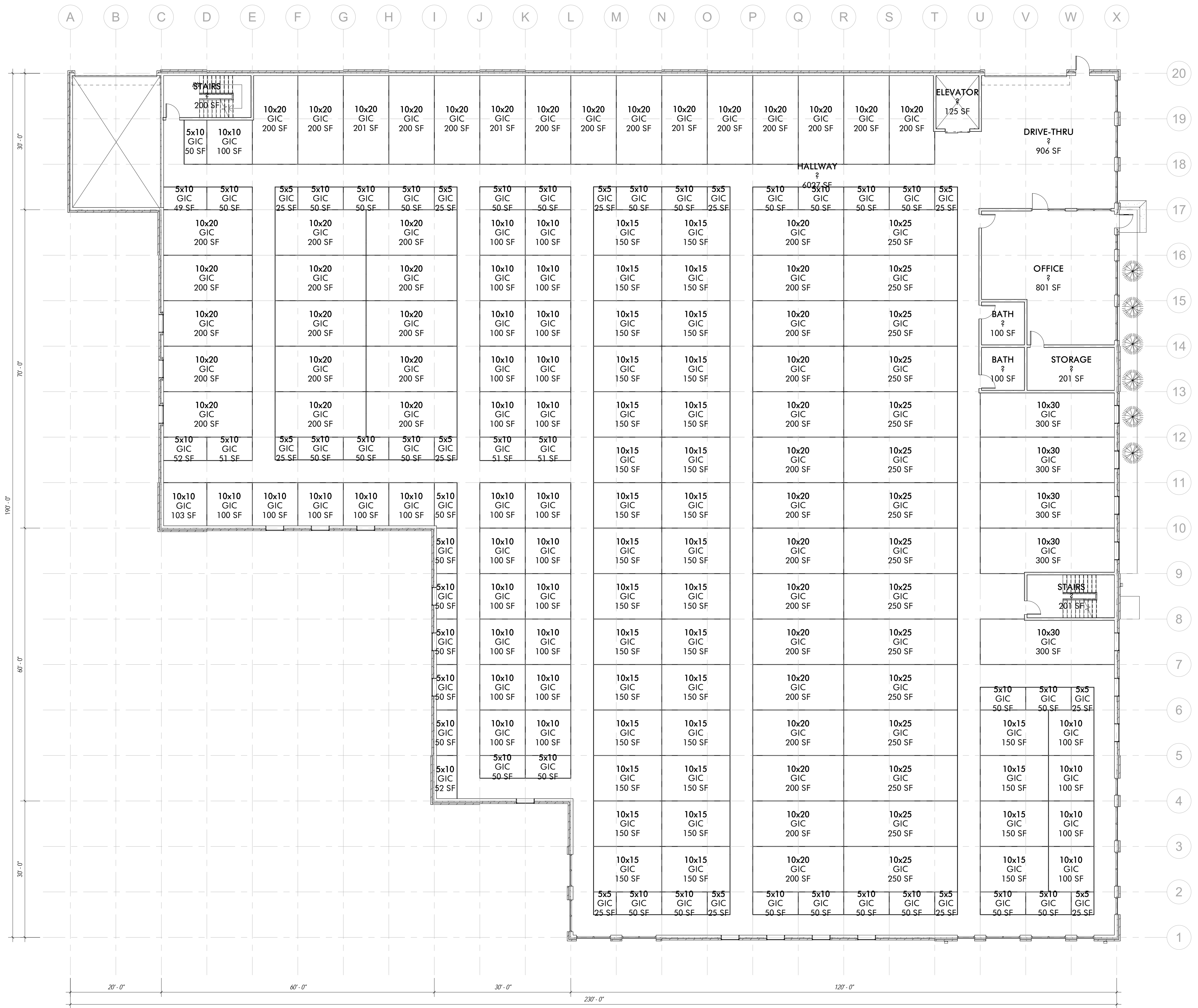


1100 Rhode Island St.
Lawrence, Kansas 66044
785 - 749 - 5806
FAX 785 - 749 - 1515

UNIT MIX - LEVEL 1

Date: Issue Date
Drawn by: WCTJ
Checked by: Checker
Revisions:

A1.0



2ND LEVEL
33,600 S.F.

UNIT MIX SCHEDULE - LEVEL 2

| UNIT SIZE/NAME | Count | AREA | UNIT TYPE/NUMBER |
|----------------|------------|--------|------------------|
| 5x5 | 12 | 25 SF | GIC |
| 5x10 | 40 | 50 SF | GIC |
| 10x10 | 33 | 100 SF | GIC |
| 10x15 | 34 | 150 SF | GIC |
| 10x20 | 45 | 200 SF | GIC |
| 10x25 | 15 | 250 SF | GIC |
| 10x30 | 5 | 300 SF | GIC |
| TOTAL | 184 | | |

1 UNIT MIX - LEVEL 2

ATTIC STORAGE OF LEE'S SUMMIT
 920 NE DEERBROOK ST., LEE'S SUMMIT, MISSOURI

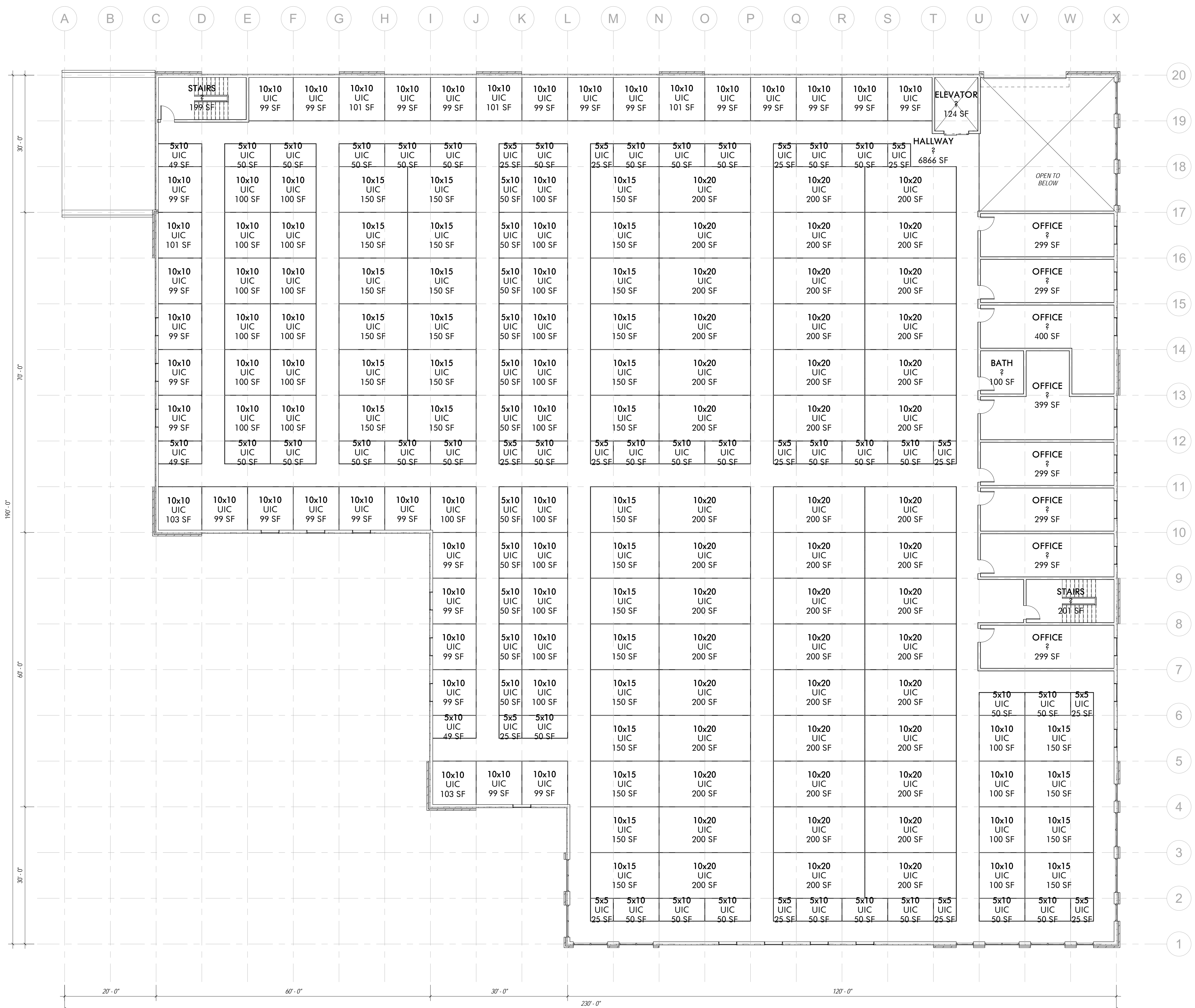


1100 Rhode Island St.
 Lawrence, Kansas 66044
 785 - 749 - 5806
 FAX 785 - 749 - 1515

UNIT MIX - LEVEL 2

Date: Issue Date
 Drawn by: WCTJ
 Checked by: Checker
 Revisions:

A1.1



ATTIC STORAGE OF LEE'S SUMMIT
920 NE DEERBROOK ST., LEE'S SUMMIT, MISSOURI

3RD LEVEL
33,600 S.F.

UNIT MIX SCHEDULE - LEVEL 3

| UNIT SIZE/NAME | Count | AREA | UNIT TYPE/NUMBER |
|----------------|-------|--------|------------------|
| 5x5 | 14 | 25 SF | UIC |
| 5x10 | 48 | 50 SF | UIC |
| 10x10 | 62 | 100 SF | UIC |
| 10x15 | 31 | 150 SF | UIC |
| 10x20 | 45 | 200 SF | UIC |
| TOTAL | 200 | | |

1 UNIT MIX - LEVEL 3
3/32" = 1'-0"

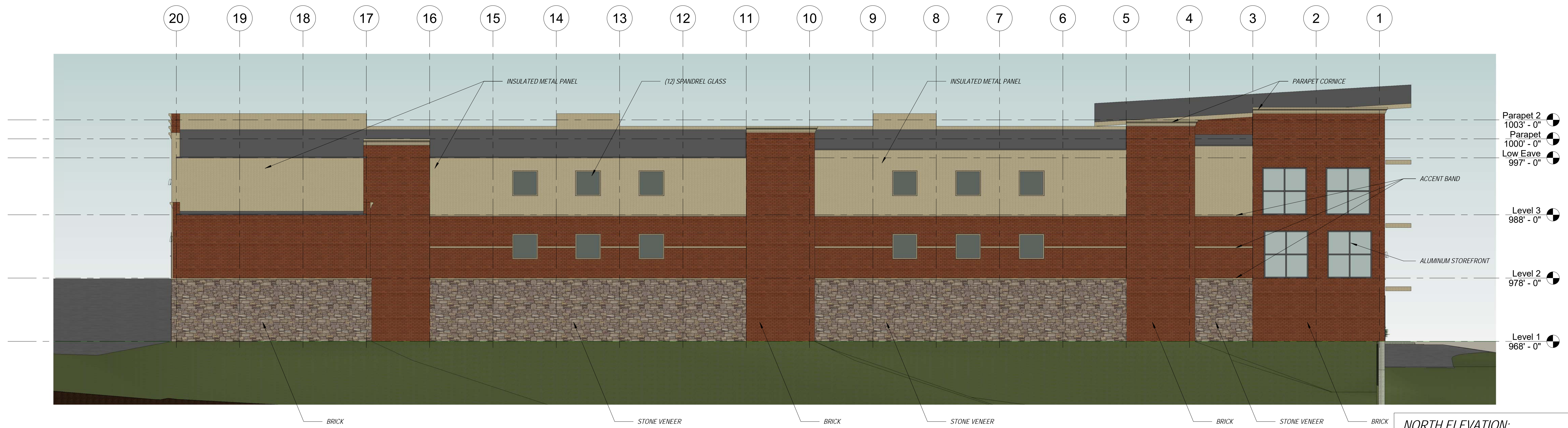


1100 Rhode Island St.
Lawrence, Kansas 66044
785 - 749 - 5806
FAX 785 - 749 - 1515

UNIT MIX - LEVEL 3

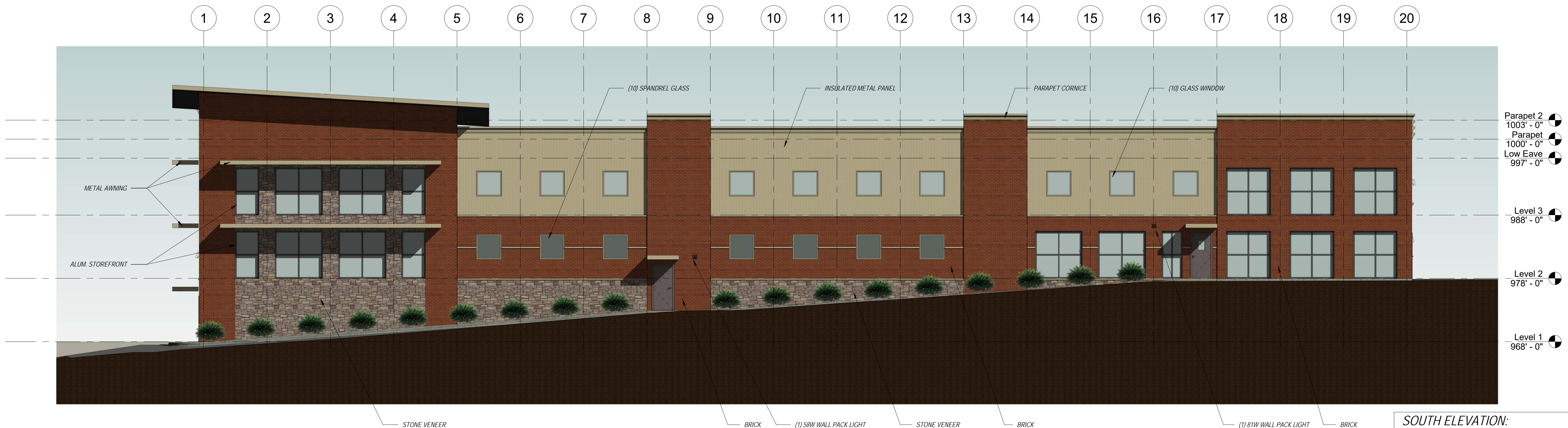
Date: Issue Date
Drawn by: WCTJ
Checked by: Checker
Revisions:

A1.2



NORTH ELEVATION:
 SOLID: 4,738 S.F. / 5,973 S.F. = 79%
 METAL: 1,235 S.F. / 5,973 S.F. = 21%

1 NORTH ELEVATION
 1/8" = 1'-0"



SOUTH ELEVATION:
 SOLID: 4,389 S.F. / 5,630 S.F. = 78%
 METAL: 1,241 S.F. / 5,630 S.F. = 22%

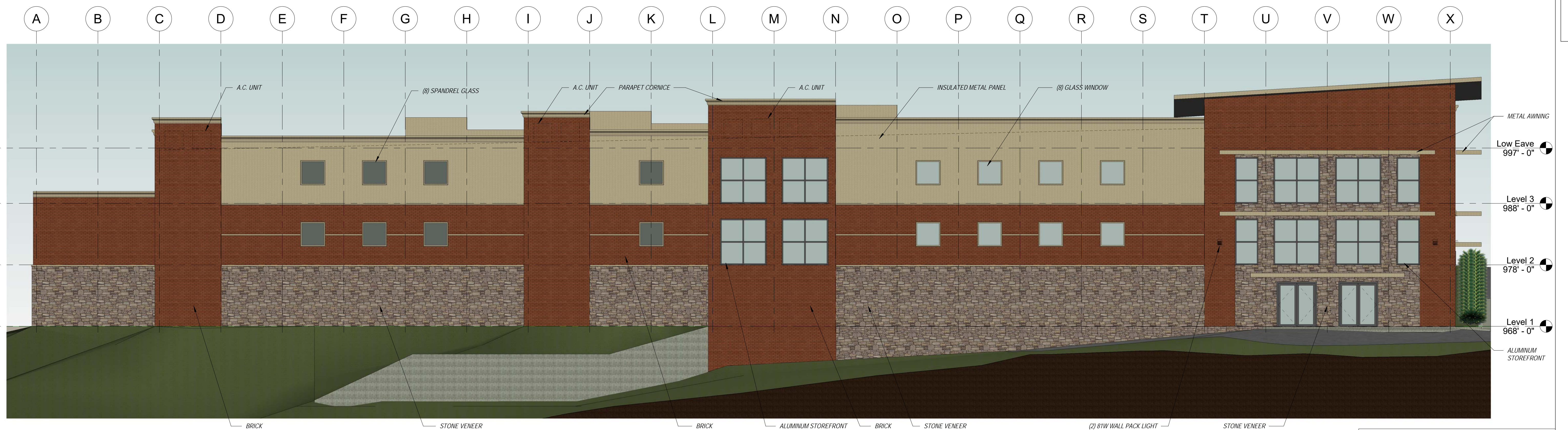
2 SOUTH ELEVATION
 1/8" = 1'-0"

ATTIC STORAGE OF LEE'S SUMMIT
 920 NE DEERBROOK ST., LEE'S SUMMIT, MISSOURI

Hernly ASSOCIATES, INC.
 ARCHITECTS
 PRESERVATION CONSULTANTS
 GRANT ADMINISTRATORS
 1100 Rhode Island St.
 Lawrence, Kansas 66044
 785 - 749 - 5804
 FAX 785 - 749 - 1515

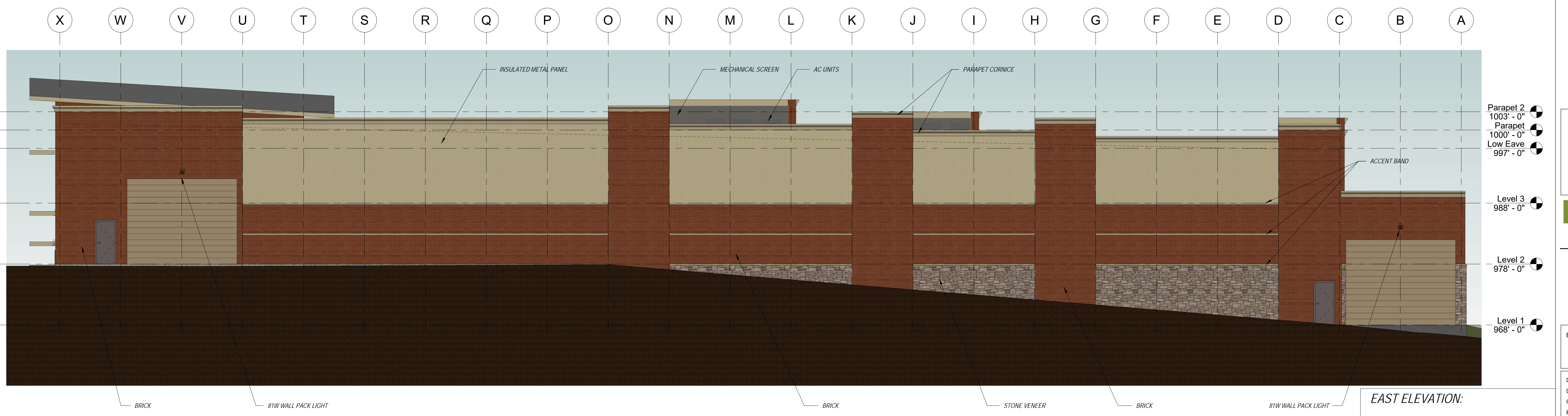
ELEVATIONS
 Date: Issue Date
 Drawn by: WCTJ
 Checked by: Checker
 Revisions:

A2.0



WEST ELEVATION:
 SOLID: 6,189 S.F. / 7,689 S.F. = 80%
 METAL: 1,500 S.F. / 7,689 S.F. = 20%

1 WEST ELEVATION
 1/8" = 1'-0"



EAST ELEVATION:
 SOLID: 4,436 S.F. / 6,092 S.F. = 73%
 METAL: 1,656 S.F. / 6,092 S.F. = 27%

2 EAST ELEVATION
 1/8" = 1'-0"

ATTIC STORAGE OF LEE'S SUMMIT
 920 NE DEERBROOK ST., LEE'S SUMMIT, MISSOURI

Hernly ASSOCIATES, INC.
 ARCHITECTS
 PRESENTATION CONSULTANTS
 GRANT ADMINISTRATORS

1100 Rhode Island St.
 Lawrence, Kansas 66044
 785 - 749 - 5806
 FAX 785 - 749 - 1515

ELEVATIONS

| | |
|-------------|------------|
| Date: | Issue Date |
| Drawn by: | WCTJ |
| Checked by: | Checker |
| Revisions: | |



1 3D View 1



2 3D View 2

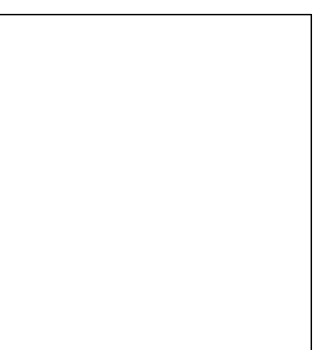


3 3D View 3



4 3D View 4

ATTIC STORAGE OF LEE'S SUMMIT
 920 NE DEERBROOK ST., LEE'S SUMMIT, MISSOURI



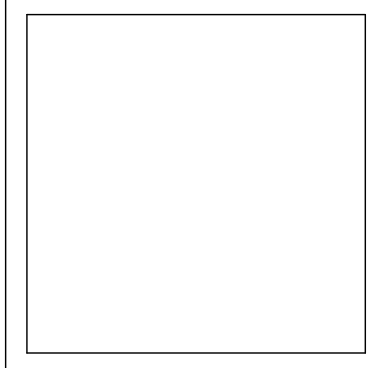
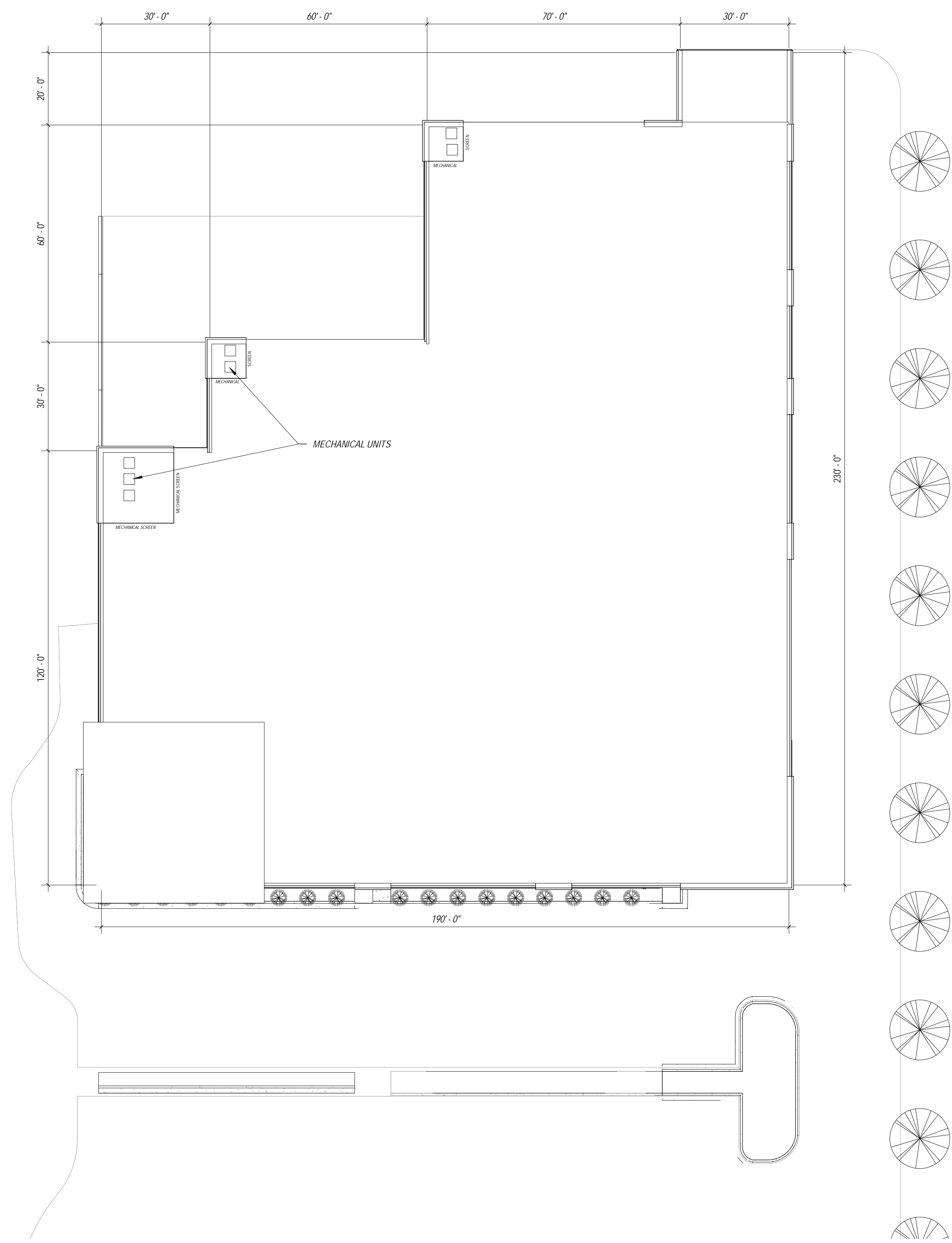
Hernly ASSOCIATES, INC.
 ARCHITECTS
 PRESERVATION CONSULTANTS
 GRANT ADMINISTRATORS

1100 Rhode Island St.
 Lawrence, Kansas 66044
 785 - 749 - 5806
 FAX 785 - 749 - 1515

PERSPECTIVES

Date: Issue Date
 Drawn by: WCTJ
 Checked by: Checker
 Revisions:

A3.0



1100 Rhode Island St.
 Lawrence, Kansas
 66044
 785 - 749 - 5806
 FAX 785 - 749 - 1515

ARCHITECTURAL SITE
 PLAN

Date: Issue Date
 Drawn by: WCTJ
 Checked by: Checker
 Revisions: