

# MOVING & STORAGE OF LEES SUMMIT

1200 SE Blue Pkwy Lees Summit, MO 64063



# MOVING & STORAGE OF LEES SUMMIT

1200 SE Blue Pkwy Lees Summit, MO 64063



IMP EXCEEDS SUSTAINABLE LEED STANDARDS BY PROVIDING SUPERIOR R-VALUE INSULATION FOR GREATER THERMAL EFFICIENCY

RED FAUX BRICK USED TO PROVIDE CONTRAST FROM METAL PANELING

ARCHITECTURAL FENESTRATION TO ENHANCE RETAIL UNIFORMITY IN THE AREA

# MOVING & STORAGE OF LEES SUMMIT

1200 SE Blue Pkwy Lees Summit, MO 64063



# MOVING & STORAGE OF LEES SUMMIT

1200 SE Blue Pkwy Lees Summit, MO 64063

ARCHITECTURAL FENESTRATION  
TO ENHANCE RETAIL UNIFORMITY  
IN THE AREA

FAUX WINDOWS TO  
PROVIDE MIX USE LOOK

STRUCTURAL EMPHASIS ON MAIN CORNERS  
PROVIDING ARTICULATION TO THE BUILDING



# MOVING & STORAGE OF LEES SUMMIT

1200 SE Blue Pkwy Lees Summit, MO 64063



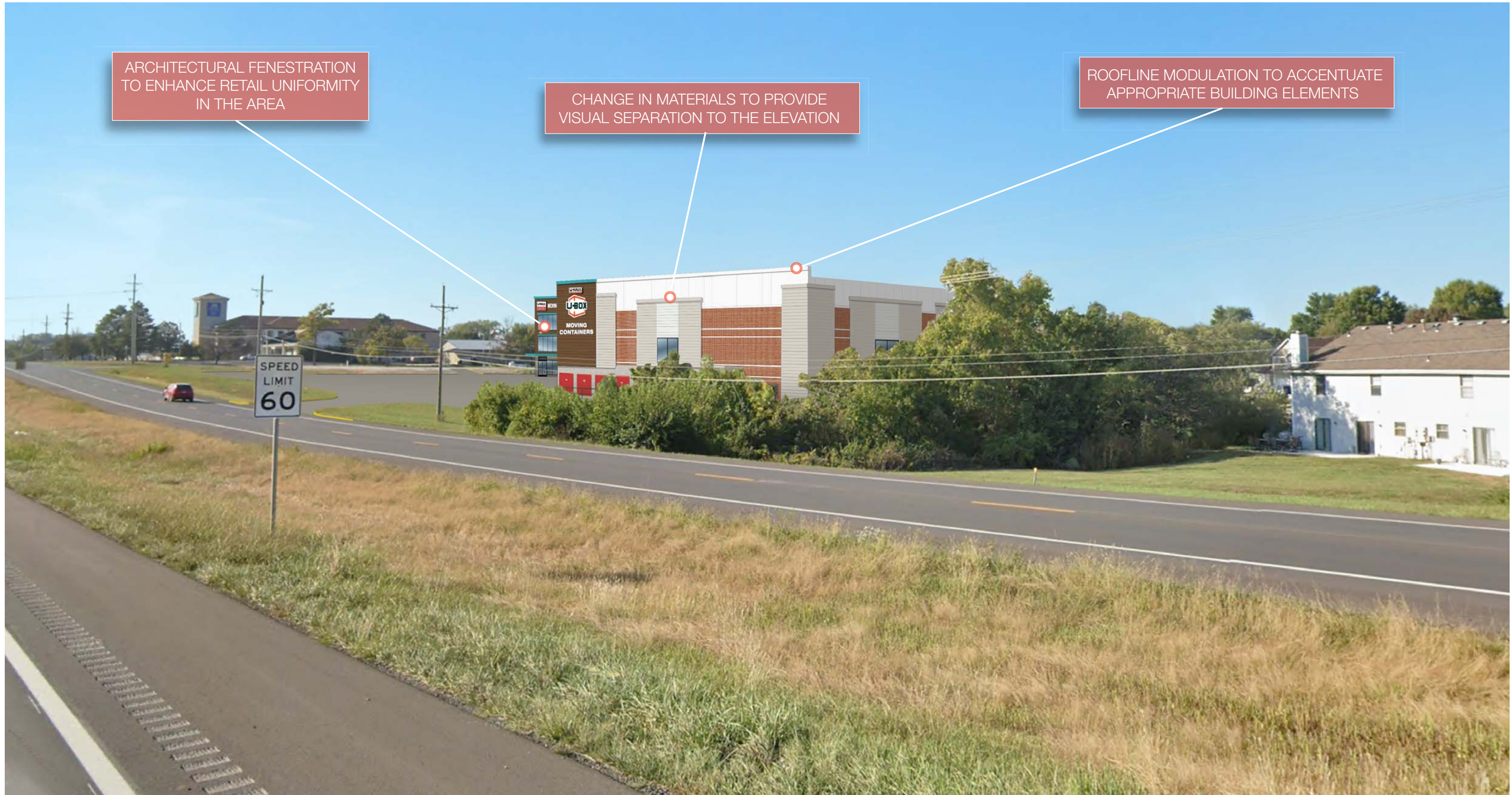
# MOVING & STORAGE OF LEES SUMMIT

1200 SE Blue Pkwy Lees Summit, MO 64063

ARCHITECTURAL FENESTRATION  
TO ENHANCE RETAIL UNIFORMITY  
IN THE AREA

CHANGE IN MATERIALS TO PROVIDE  
VISUAL SEPARATION TO THE ELEVATION

ROOFLINE MODULATION TO ACCENTUATE  
APPROPRIATE BUILDING ELEMENTS



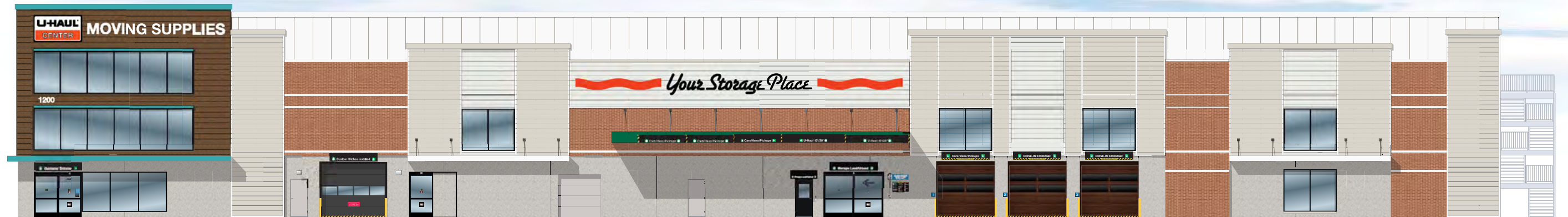
# MOVING & STORAGE OF LEES SUMMIT

1200 SE Blue Pkwy Lees Summit, MO 64063



**WEST ELEVATION - BLDG. A**

Scale: 1" = 20'



**SOUTH ELEVATION - BLDG. A**

Scale: 1" = 20'

**MOVING & STORAGE OF LEES SUMMIT**  
1200 SE Blue Pkwy Lees Summit, MO 64063



**EAST ELEVATION - BLDG. A**  
Scale: 1" = 20'



**NORTH ELEVATION - BLDG. A**  
Scale: 1" = 20'



# MOVING & STORAGE OF LEES SUMMIT

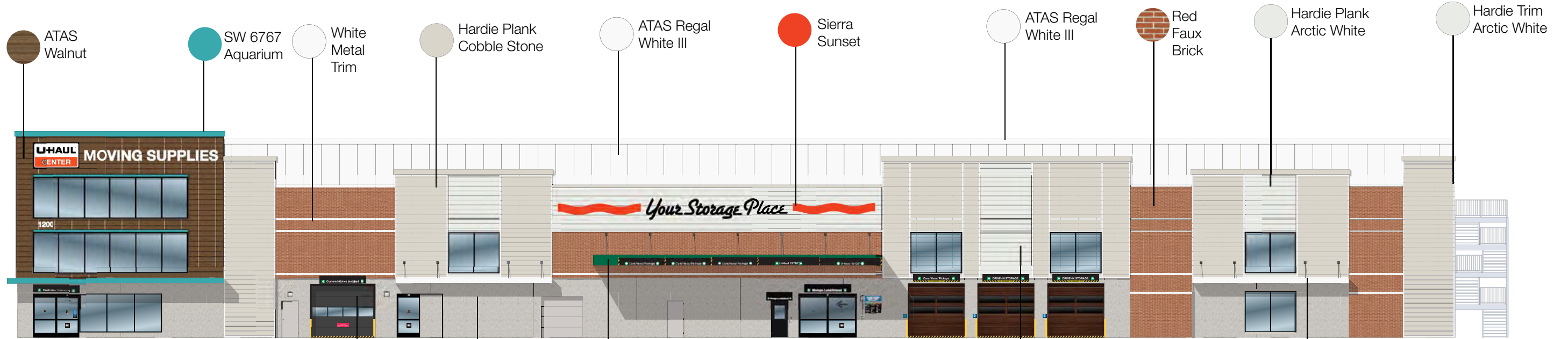
1200 SE Blue Pkwy Lees Summit, MO 64063

GLASS = 805 SF (20%)  
 MASONRY = 938 SF (23%)  
 ARCHITECTURAL METAL PANEL = 2,351 SF (57%)



**WEST ELEVATION - BLDG. A**

Scale: 1" = 20'



**SOUTH ELEVATION - BLDG. A**

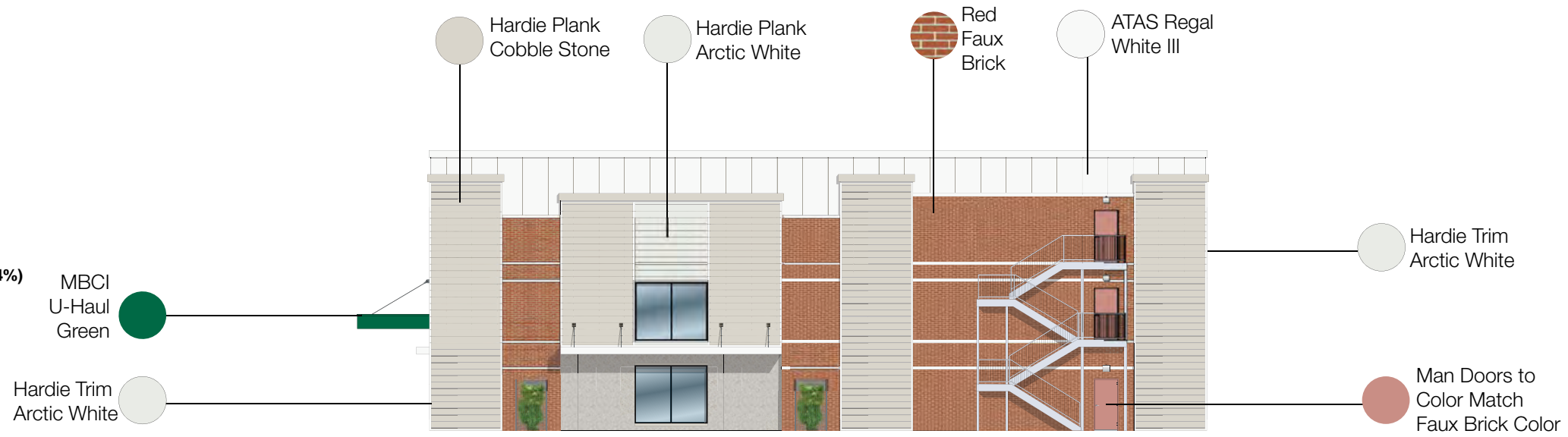
Scale: 1" = 20'

GLASS = 1,080 SF (10%)  
 MASONRY = 4,060 SF (38%)  
 ARCHITECTURAL METAL PANEL = 5,581 SF (52%)

# MOVING & STORAGE OF LEES SUMMIT

1200 SE Blue Pkwy Lees Summit, MO 64063

GLASS = 160 SF (4%)  
MASONRY = 1,731 SF (42%)  
ARCHITECTURAL METAL PANEL = 2,203 SF (54%)



**EAST ELEVATION - BLDG. A**

Scale: 1" = 20'



**NORTH ELEVATION - BLDG. A**

Scale: 1" = 20'

GLASS = 0 SF (0%)  
MASONRY = 4,453 SF (42%)  
ARCHITECTURAL METAL PANEL = 6,268 SF (58%)



# MOVING & STORAGE OF LEES SUMMIT

1200 SE Blue Pkwy Lees Summit, MO 64063

ARCHITECTURAL MODULATION CONVEYING A MORE RETAIL APPEARANCE

FAUX WINDOWS TO PROVIDE MIX USE LOOK

ARCHITECTURAL FENESTRATION TO ENHANCE RETAIL UNIFORMITY IN THE AREA.

PROJECTION CREATES A MORE RETAIL APPEARANCE



**WEST ELEVATION - BLDG. A**

Scale: 1" = 20'

GENEROUS USE OF GLASS NEAR STOREFRONT

CHANGE IN MATERIALS TO PROVIDE VISUAL SEPARATION TO THE ELEVATION

GREENSCREEN METAL TRELLIS WITH LOCALLY SOURCED FOLIAGE CREATES A MORE RETAIL APPEARANCE

FAUX WINDOWS TO PROVIDE MIX USE LOOK



**SOUTH ELEVATION - BLDG. A**

Scale: 1" = 20'

PROJECTION CREATES ARCHITECTURAL INTEREST ABOVE CUSTOMER ENTRANCE AREA

PROJECTION CREATES ARCHITECTURAL INTEREST ABOVE STORAGE: LOAD/UNLOAD AREA

WOOD GRAIN CARRIAGE DOORS PROVIDE A WELCOMING ENTRANCE FOR CUSTOMERS

# MOVING & STORAGE OF LEES SUMMIT

1200 SE Blue Pkwy Lees Summit, MO 64063

FAUX WINDOWS TO PROVIDE MIX USE LOOK

CHANGE IN MATERIALS TO PROVIDE VISUAL SEPARATION TO THE ELEVATION

PROJECTIONS CREATES A MORE RETAIL APPEARANCE



**EAST ELEVATION - BLDG. A**

Scale: 1" = 20'

PROJECTIONS CREATES A MORE RETAIL APPEARANCE

ARTICULATION WITH 2" MATERIAL POP-OUTS, WHILE EMPHASIZING AN ARCHITECTURAL DIVIDE OF BUILDING INTO SMALLER IDENTIFIABLE SECTIONS

CHANGE IN MATERIAL COLORS HELPS PROVIDE VISUAL SEPARATION TO THE ELEVATION WHILE CREATING INTEREST AT THE SKYLINE



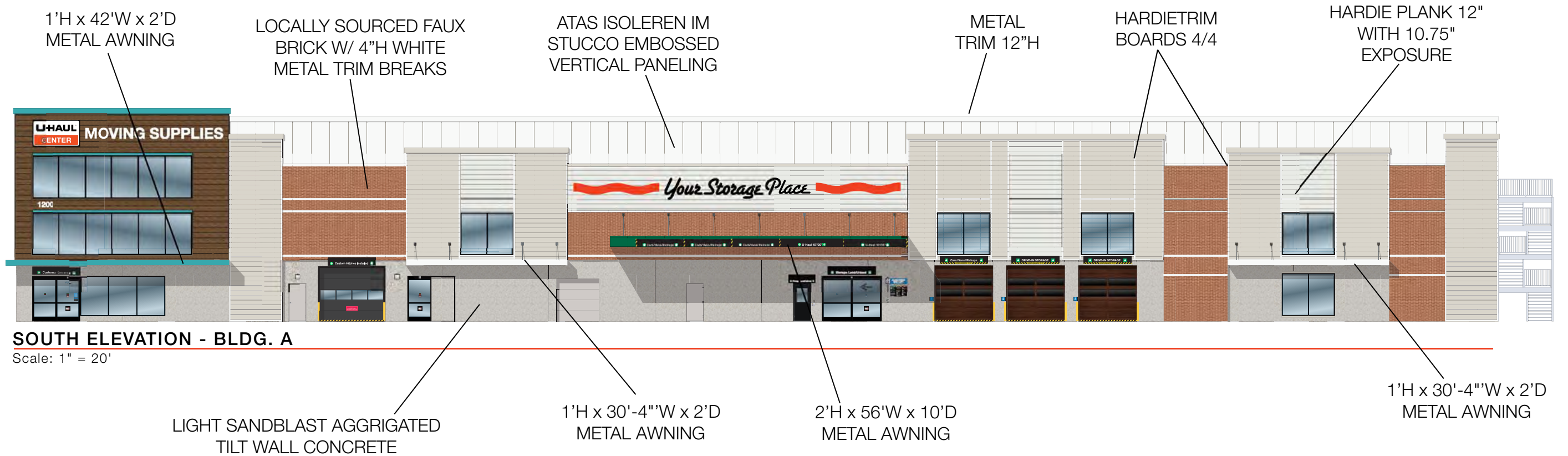
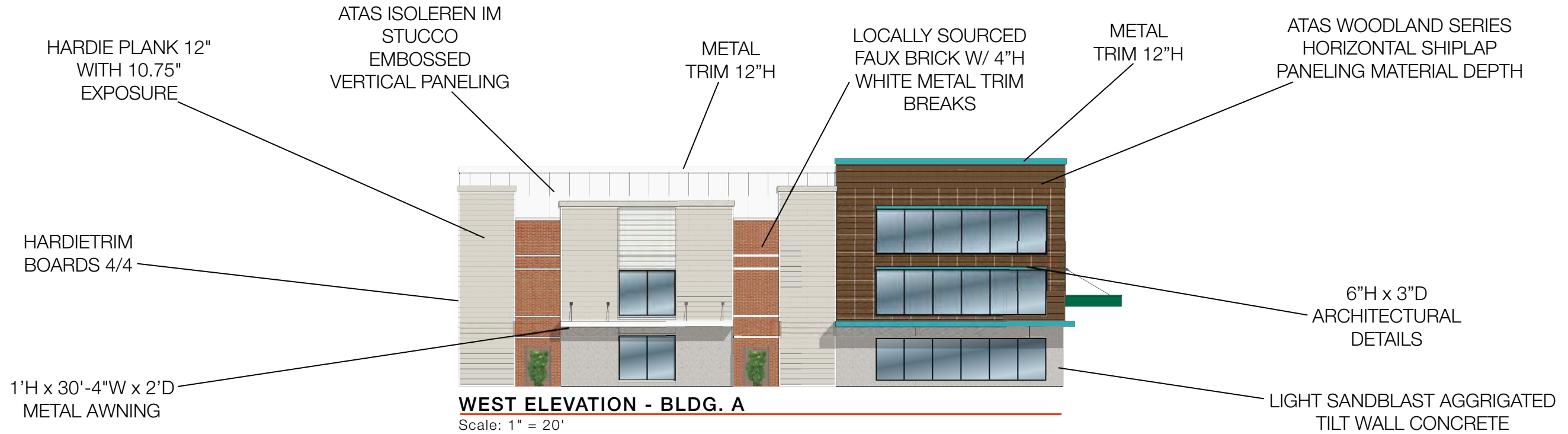
**NORTH ELEVATION - BLDG. A**

Scale: 1" = 20'

GREENSCREEN METAL TRELLIS WITH LOCALLY SOURCED FOLIAGE CREATES A MORE RETAIL APPEARANCE

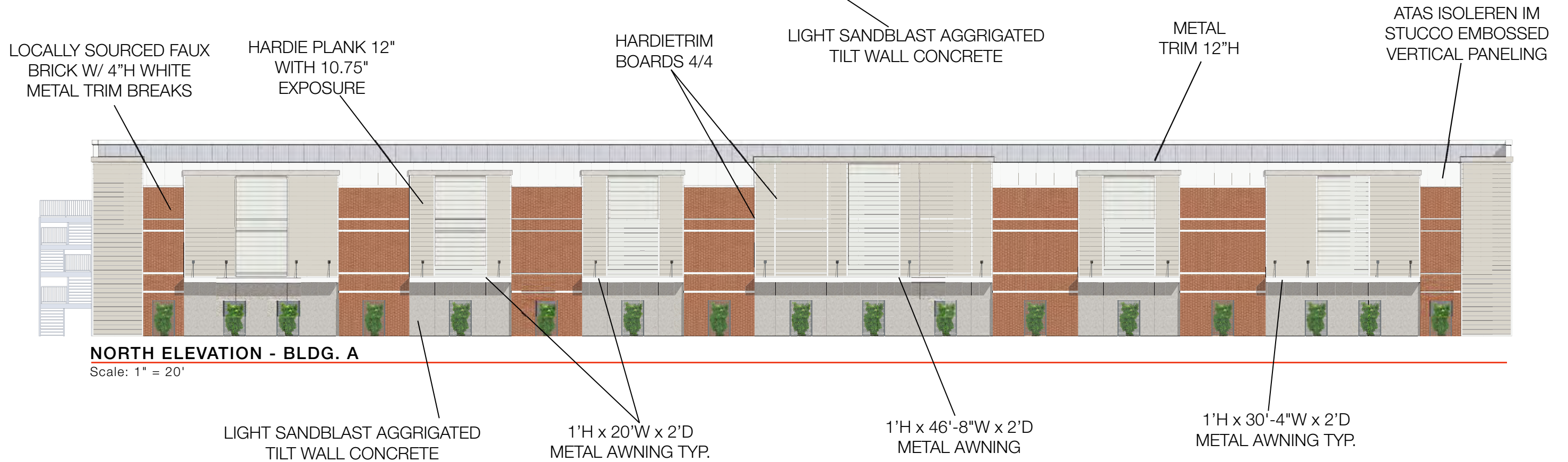
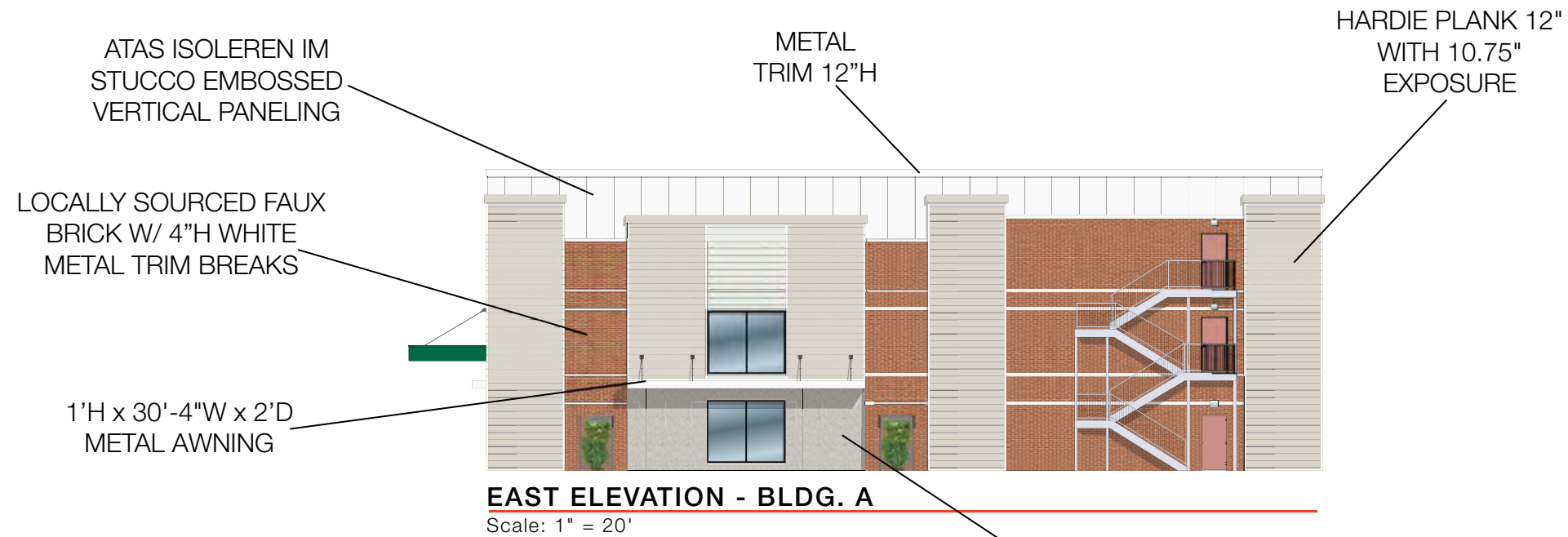
# MOVING & STORAGE OF LEES SUMMIT

1200 SE Blue Pkwy Lees Summit, MO 64063



# MOVING & STORAGE OF LEES SUMMIT

1200 SE Blue Pkwy Lees Summit, MO 64063



# MOVING & STORAGE OF LEES SUMMIT

1200 SE Blue Pkwy Lees Summit, MO 64063

LIT CABINET SIGN

9'W X 5'H  
45 SQFT

PLASTIC FORMED  
CHANNEL LETTERS

25'-9"W X 2'H  
51.5 SQFT

11 GAUGE STEEL BLACK  
POWDER COAT SIGN  
27'-5"W X 4'H  
109.66 SQFT



## SOUTH ELEVATION - BLDG. A

Scale: 1" = 20'

# MOVING & STORAGE OF LEES SUMMIT

1200 SE Blue Pkwy Lees Summit, MO 64063



**EAST ELEVATION - BLDG. B**

Scale: 1" = 20'

GLASS = 160 SF (5%)  
MASONRY = 1,212 SF (34%)  
ARCHITECTURAL METAL PANEL = 2,184 SF (61%)



**NORTH ELEVATION - BLDG. B**

Scale: 1" = 20'

GLASS = 261 SF (6%)  
MASONRY = 1,960 SF (42%)  
ARCHITECTURAL METAL PANEL = 2,270 SF (52%)



**WEST ELEVATION - BLDG. B**

Scale: 1" = 20'

GLASS = 614 SF (17%)  
MASONRY = 910 SF (26%)  
ARCHITECTURAL METAL PANEL = 2,032 SF (57%)



**SOUTH ELEVATION - BLDG. B**

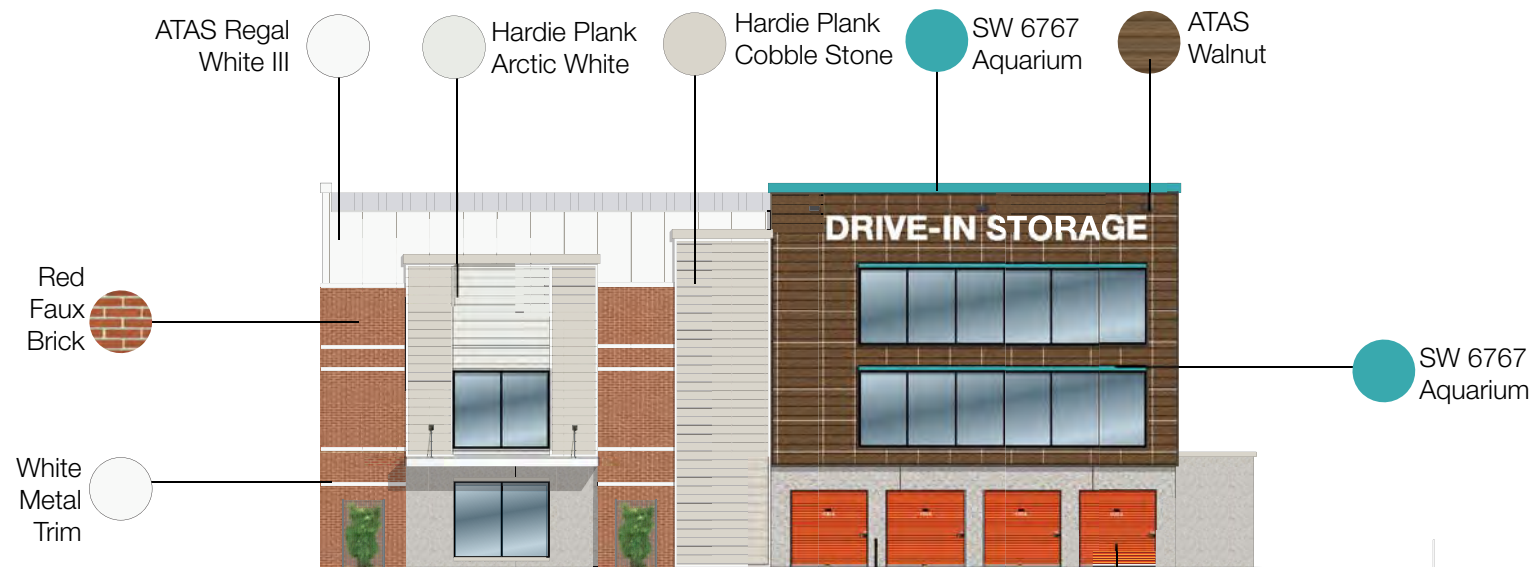
Scale: 1" = 20'

GLASS = 100 SF (2%)  
MASONRY = 1,747 SF (37%)  
ARCHITECTURAL METAL PANEL = 2,868 SF (61%)



# MOVING & STORAGE OF LEES SUMMIT

1200 SE Blue Pkwy Lees Summit, MO 64063



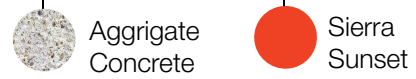
**WEST ELEVATION - BLDG. B**

Scale: 1" = 20'



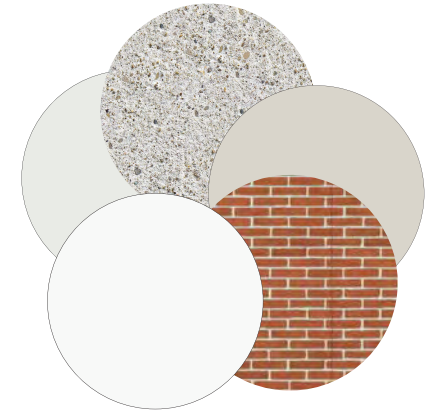
**SOUTH ELEVATION - BLDG. B**

Scale: 1" = 20'



# MOVING & STORAGE OF LEES SUMMIT

1200 SE Blue Pkwy Lees Summit, MO 64063



Hardie Plank Cobble Stone  
Hardie Plank Arctic White  
ATAS Regal White III  
Red Faux Brick



**EAST ELEVATION - BLDG. B**

Scale: 1" = 20'

Hardie Plank Cobble Stone  
ATAS Regal White III  
Hardie Trim Arctic White  
Hardie Plank Arctic White



**NORTH ELEVATION - BLDG. B**

Scale: 1" = 20'

White Metal Trim

Aggregate Concrete  
ATAS Ascot White

Aggregate Concrete  
Red Faux Brick

# MOVING & STORAGE OF LEES SUMMIT

1200 SE Blue Pkwy Lees Summit, MO 64063

FAUX WINDOWS TO PROVIDE MIX USE LOOK

ARCHITECTURAL FENESTRATION TO ENHANCE RETAIL UNIFORMITY IN THE AREA.

STRUCTURAL EMPHASIS ON MAIN CORNERS PROVIDING ARTICULATION TO THE BUILDING

ROOFLINE MODULATION TO ACCENTUATE APPROPRIATE BUILDING ELEMENTS



**WEST ELEVATION - BLDG. B**

Scale: 1" = 20'



**SOUTH ELEVATION - BLDG. B**

Scale: 1" = 20'

ARCHITECTURAL DETAIL

FAUX WINDOWS TO PROVIDE MIX USE LOOK

GREENSCREEN METAL TRELLIS WITH LOCALLY SOURCED FOLIAGE CREATES A MORE RETAIL APPEARANCE

# MOVING & STORAGE OF LEES SUMMIT

1200 SE Blue Pkwy Lees Summit, MO 64063

FAUX WINDOWS TO PROVIDE MIX USE LOOK

ROOFLINE MODULATION TO ACCENTUATE APPROPRIATE BUILDING ELEMENTS

CHANGE IN MATERIALS TO PROVIDE VISUAL SEPARATION TO THE ELEVATION



**EAST ELEVATION - BLDG. B**

Scale: 1" = 20'



**NORTH ELEVATION - BLDG. B**

Scale: 1" = 20'

PROJECTION CREATES A MORE RETAIL APPEARANCE

GREENSCREEN METAL TRELLIS WITH LOCALLY SOURCED FOLIAGE CREATES A MORE RETAIL APPEARANCE

FAUX WINDOWS TO PROVIDE MIX USE LOOK

# MOVING & STORAGE OF LEES SUMMIT

1200 SE Blue Pkwy Lees Summit, MO 64063

ATAS ISOLEREN IM STUCCO EMBOSSED VERTICAL PANELING

LOCALLY SOURCED FAUX BRICK W/ 4"H WHITE METAL TRIM BREAKS

HARDIE PLANK 12" WITH 10.75" EXPOSURE

ATAS WOODLAND SERIES HORIZONTAL SHIPLAP PANELING MATERIAL DEPTH

METAL TRIM 12"H

HARDIE PLANK 12" WITH 10.75" EXPOSURE

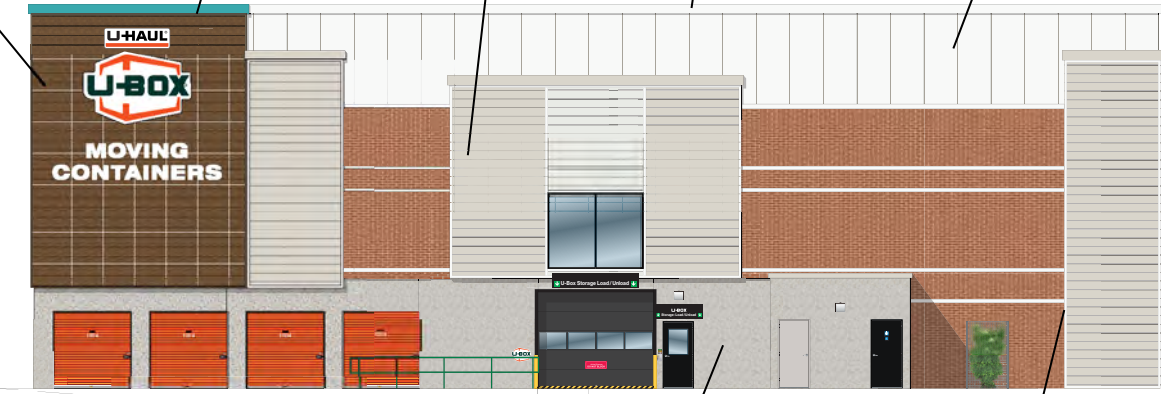
METAL TRIM 12"H

ATAS ISOLEREN IM STUCCO EMBOSSED VERTICAL PANELING



**WEST ELEVATION - BLDG. B**

Scale: 1" = 20'



**SOUTH ELEVATION - BLDG. B**

Scale: 1" = 20'

6"H x 3"D ARCHITECTURAL DETAILS

1'H x 20'W x 2'D METAL AWNING

HARDIE PLANK 12" WITH 10.75" EXPOSURE

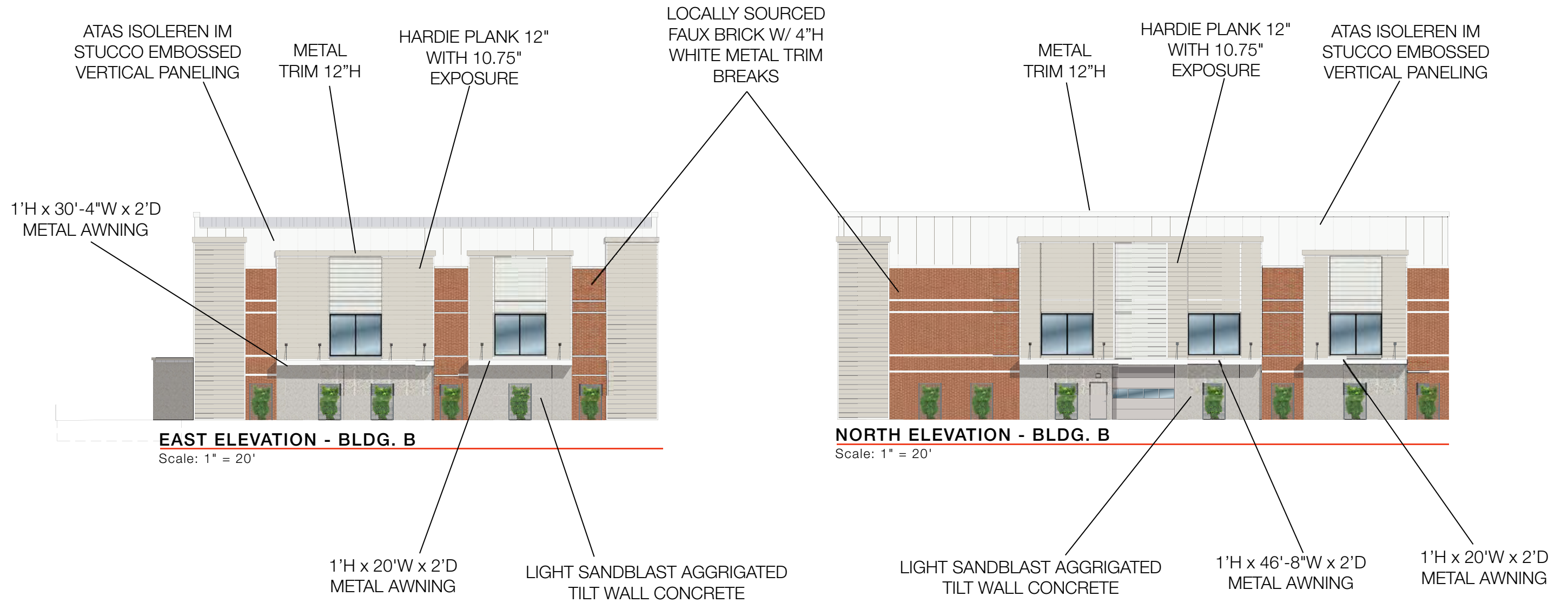
LIGHT SANDBLAST AGGRIGATED TILT WALL CONCRETE

LIGHT SANDBLAST AGGRIGATED TILT WALL CONCRETE

HARDIETRIM BOARDS 4/4

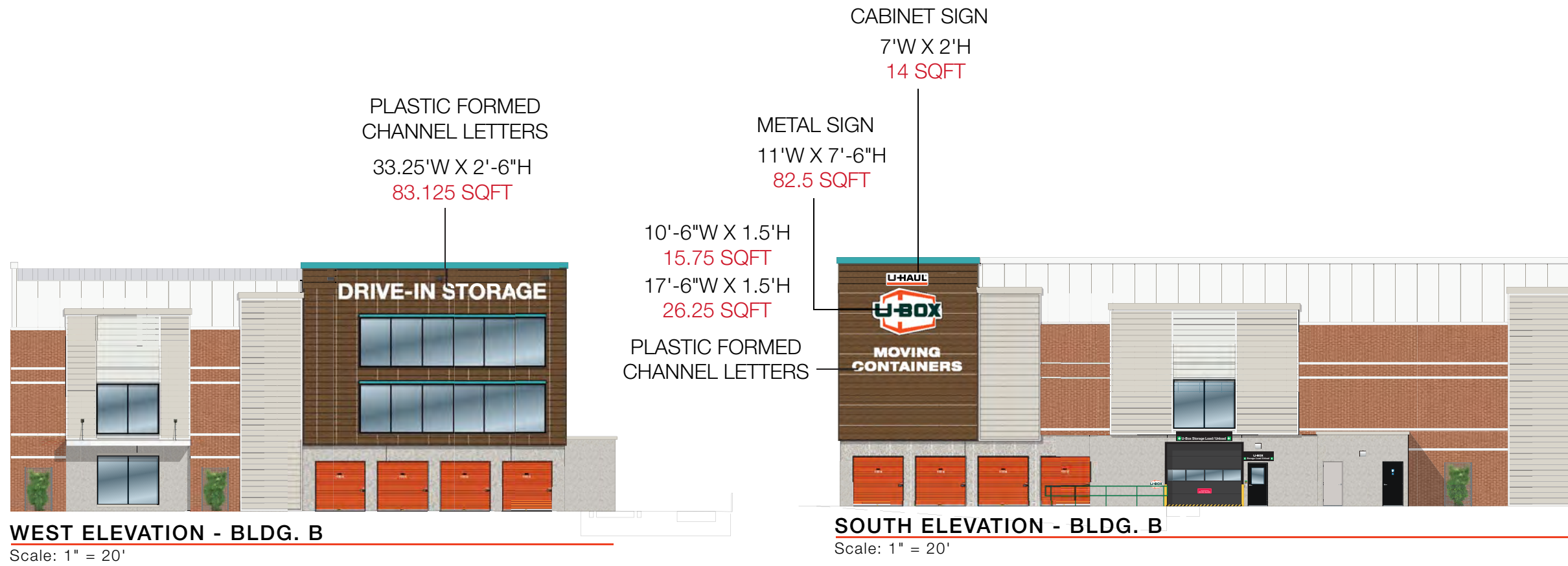
# MOVING & STORAGE OF LEES SUMMIT

1200 SE Blue Pkwy Lees Summit, MO 64063



# MOVING & STORAGE OF LEES SUMMIT

1200 SE Blue Pkwy Lees Summit, MO 64063



**WEST ELEVATION - BLDG. B**

Scale: 1" = 20'

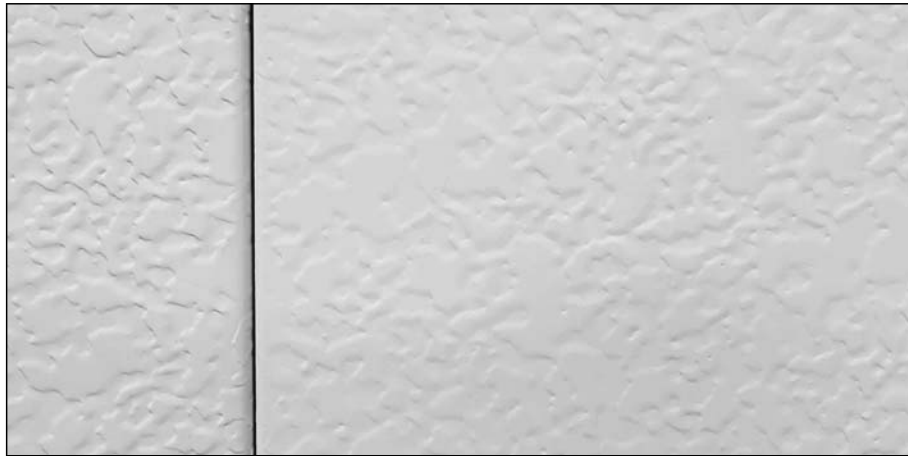
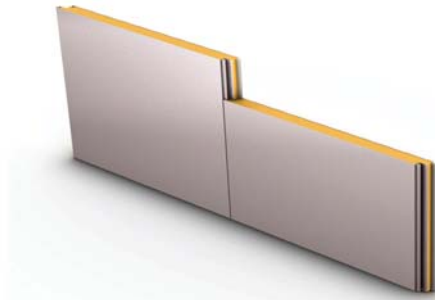
**SOUTH ELEVATION - BLDG. B**

Scale: 1" = 20'

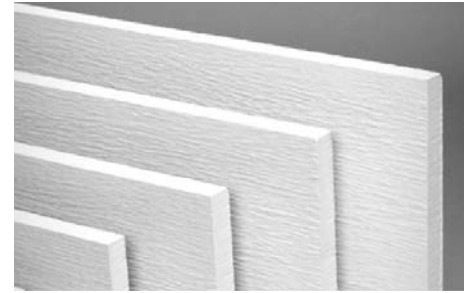


# Isoleren IM

SKU:  
IIM  
Thickness (A):  
2", 2 1/2", 3", and 4"  
Exterior Texture:  
Stucco Embossed  
Standard  
Lengths:  
8'-0" to 40'-0"



ATAS  
WOODLAND SERIES  
HORIZONTAL SHIPLAP PANELING  
EXAMPLE



HARDIETRIM® BOARDS  
4/4 RUSTIC

With a wood-like texture, this trim has vintage appeal—and it's warp- and rot-resistant. Available in Statement Collection products, Dream Collection products, or primed for paint.

HARDIE TRIM  
MATERIAL EXAMPLE



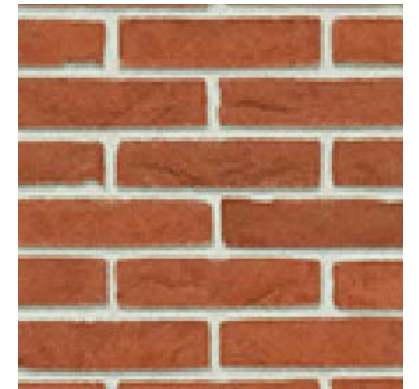
HARDIEPLANK® LAP SIDING  
SELECT CEDARMILL®

Our natural cedar look has a soft texture that mimics wood.

HARDIE PLANK  
HORIZONTAL SHIPLAP PANELING EXAMPLE



LIGHT SANDBLAST AGGRIGATED  
TILT WALL CONCRETE  
EXAMPLE



LOCALLY SOURCED RED  
FAUX BRICK EXAMPLE