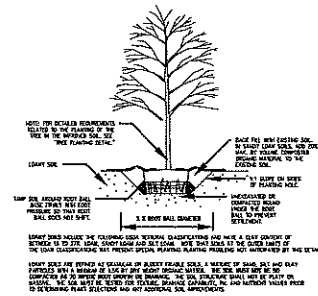
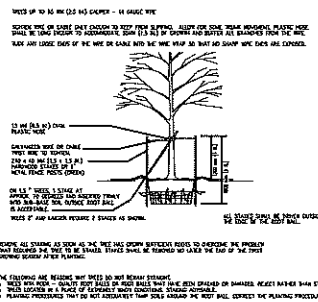


TREE PLANTING DETAIL - B&B TREES
NO SCALE



SOIL IMPROVEMENT DETAIL - TREES PLANTED IN NON RESTRICTED SOIL CONDITIONS



TREE STAKING DETAIL - TREES UP TO 3 INCH CALIPER
NO SCALE

PLANT SCHEDULE SITE PLAN

TREES	QTY	BOTANICAL NAME	COMMON NAME	SIZE	CONTAINER
	4	Acer miyabei 'State Street'	Miyabei Maple	2.5" Cal.	B&B
	11	Acer truncatum 'Warren Red'	Pacific Sunset Maple	2.5" Cal.	B&B
	1	Malus x 'Prairifire'	Prairifire Crabapple	2.5" Cal.	B&B
	3	Malus x 'Sargentii'	Sargent Crabapple	2.5" Cal.	B&B
	7	Nyssa sylvatica 'Wildfire'	Black Gum	2.5" Cal.	B&B
	4	Pinus flexilis 'Vanderwolf's Pyramid'	Vanderwolf's Pyramid Pine	5-6'	B&B
	3	Platanus x acerifolia 'Morton Circle' TM	Exclamation London Plane Tree	2.5" Cal.	B&B
	4	Quercus bicolor	Swamp White Oak	2.5" Cal.	B&B
SHRUBS	QTY	BOTANICAL NAME	COMMON NAME	SIZE	CONTAINER
	3	Berberis thunbergii 'Crimson Pygmy'	Crimson Pygmy Barberry	#3	Pot
	5	Buxus x 'Green Velvet'	Green Velvet Boxwood	#3	Pot
	21	Euonymus alatus 'Compactus'	Compact Burning Bush	#5	Pot
	20	Pinus mugo mugo	Dwarf Mugo Pine	#5	Pot
	56	Taxus x media 'Densiformis'	Dense Yew	#5	Pot
	27	Viburnum carlesii	Korean Spice Viburnum	#5	Pot

* Re-creation of existing planting plan should not include Potentilla, Ash Trees, Red Maples, Bradford Pears, Austrian Pines etc., due to Disease, Shallow Roots, Weak Wood etc. Suitable Substitutes have been made Above for Proven, Hardy Species well Suited to these Conditions.

Existing Trees for Credit

- 6 Eastern RedCedar
- 7 Austrian Pine
- 2 Sweet Gum
- 1 Hackberry
- 1 Crabapple
- 1 Bradford Pear
- 7 Pin Oak
- 3 Ash
- 28 Trees Total

Existing Shrubs for Credit

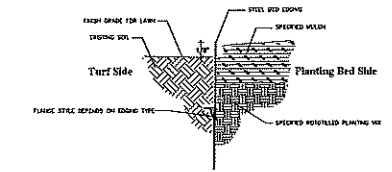
- 2 Japanese Yews
- 3 Honeysuckle
- 3 Viburnum
- 5 Burning Bush
- 1 Barberry
- 5 Boxwood
- 19 Shrubs Total

62 Trees Represented on the Original Approved Plan - 28 Existing = 34 New Required.
Requirement Met.

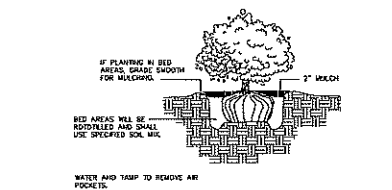
147 Shrubs Represented on the Original Approved Plan - 19 Existing = 128 Required.
Requirement Met.

LEE'S SUMMIT STORAGE
1920 NE Rice Road
Lee's Summit, MO., 64064
Connie, 913.488.2187

Fine Commercial Landscape Development



STEEL EDGING DETAIL
NO SCALE



SHRUB PLANTING
NO SCALE

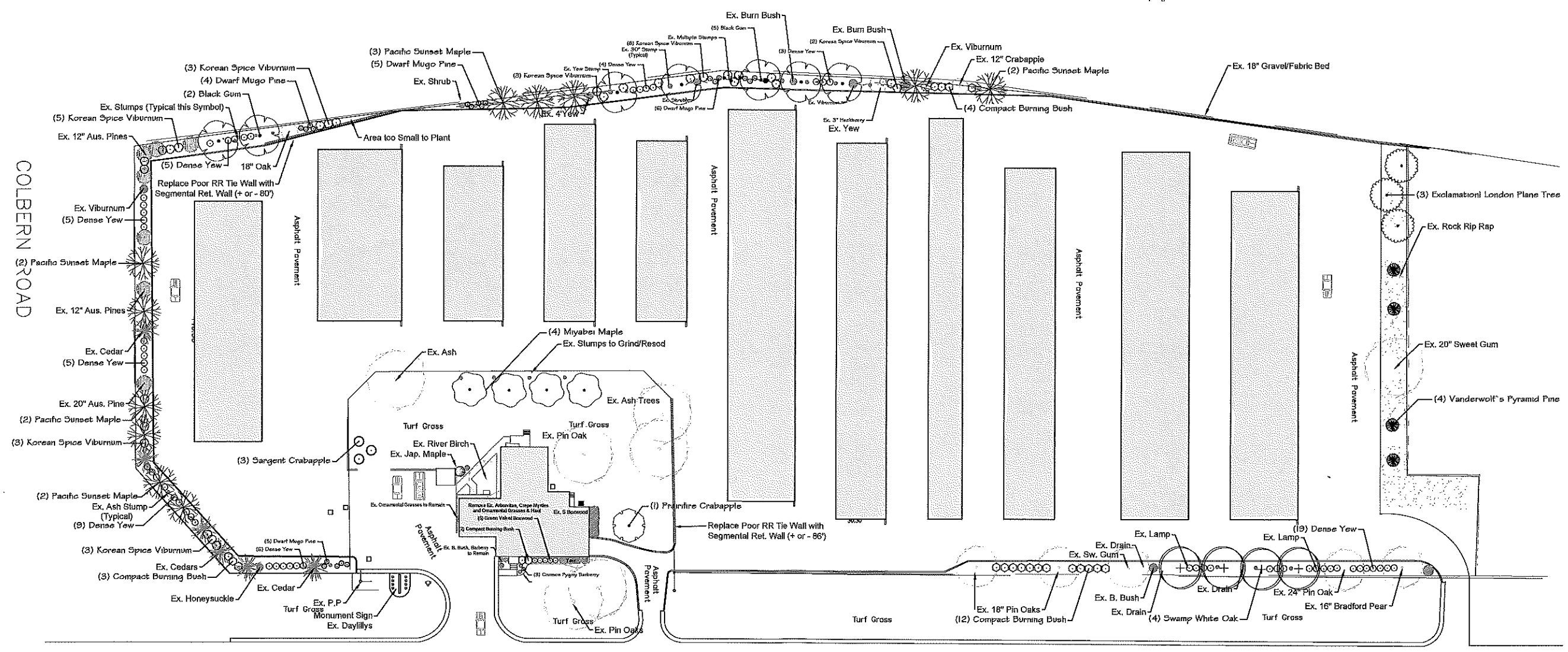
RICHARD CLAYTON BARRETT
Richard Clayton Barrett, ASLA, LLC

712B Nall Avenue
Overland Park, KS., 66208
Phone 913.382.1200
Fax 913.382.1171

Date Page
05.13.20 01
05.22.20 01

LEE'S SUMMIT STORAGE
 1920 NE Rice Road
 Lee's Summit, MO., 64064
 Connie; 913.488.2187
 Fine Commercial Landscape Development

Highway Baseline
 U.S. INTERSTATE HIGHWAY ROUTE No. 470
 RAMP #6
 Ramp #6 Baseline

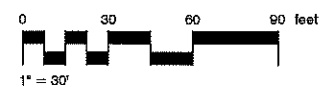


OLD MISSOURI STATE HIGHWAY ROUTE No. 291



RICHARD CLAYTON BARRETT
 Richard Clayton Barrett, ASLA, LLC

7128 Nall Avenue
 Overland Park, KS, 66208
 Phone 913.362.1200
 Fax 913.362.1171



RE-CREATED LANDSCAPE ARCHITECTURAL SITE PLAN

Date Page
 05.13.20 01
 05.22.20 01

Professional Seal