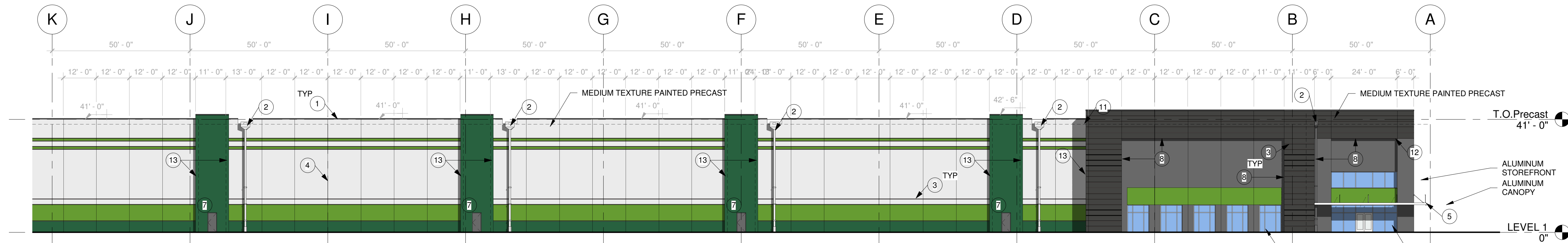
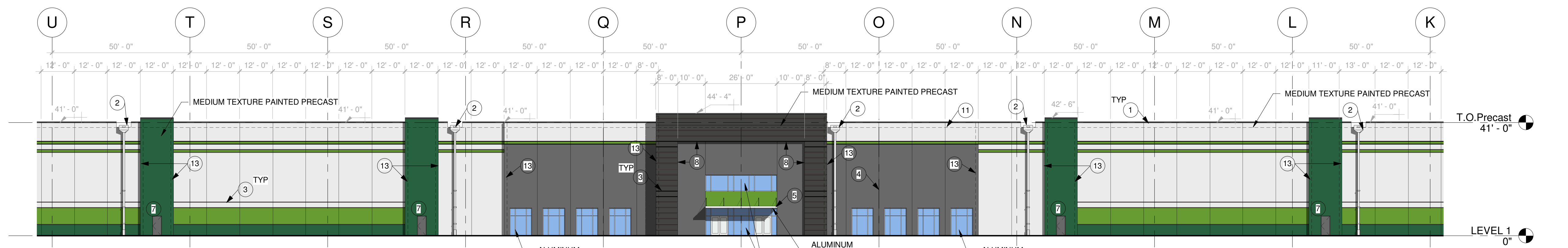


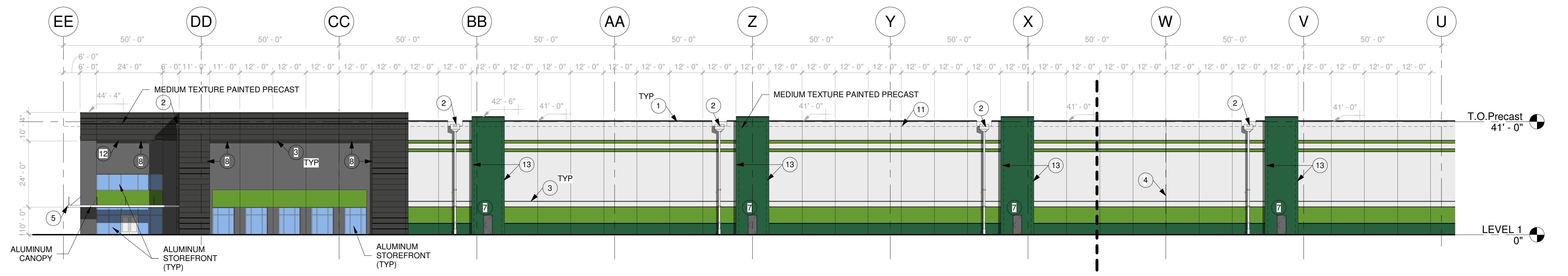
3'
2'
1'
0'
VERIFY SHEET SCALE HERE



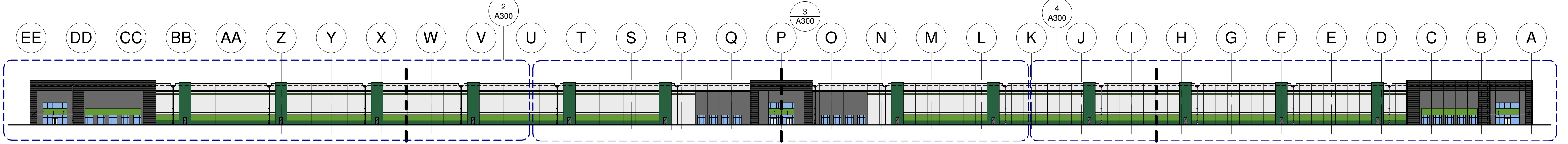
4 NORTH ELEVATION - PARTIAL 3
A300 3/64" = 1'-0"



3 NORTH ELEVATION - PARTIAL 2
A300 3/64" = 1'-0"



2 NORTH ELEVATION - PARTIAL 1
A300 3/64" = 1'-0"



1 NORTH ELEVATION - OVERALL
A300 1" = 60'-0"

EXTERIOR ELEVATION KEYNOTES

- 1 PREFINISHED METAL COPING WITH CONT. KEEPER
- 2 SCUPPER, COLLECTOR HEAD AND DOWNSPOUT. COLOR TO MATCH ADJACENT PRECAST
- 3 HORIZONTAL REVEAL
- 4 EXPANSION JOINT
- 5 PREFABRICATED ALUMINUM CANOPY WITH TIE BACK RODS. PROVIDE DRAINAGE SCUPPER AT EACH END
- 6 KNOCK OUT PANEL FOR FUTURE LOADING DOCK OPENING. EXTERIOR HOLLOW METAL DOOR AND FRAME. PAINT TO MATCH ADJACENT PRECAST
- 7 RECESS IN PRECAST PANEL. PANEL JOINT HERE TO HAVE PROFILE TO MATCH TYPICAL HORIZONTAL REVEAL
- 8 12" TALL ALUMINUM BUILDING SIGNAGE. BLACK FINISH.
- 9 ROOF LINE BEYOND
- 10 PANEL JOINT HERE TO MATCH HORIZONTAL REVEAL PROFILE
- 11 12" PANEL OVERLAP CONDITION

EXTERIOR ELEVATION FINISH KEY

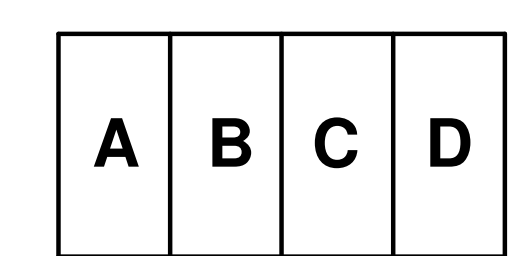
- DARK GREEN
CUSTOM COLOR MATCH
RGB: 40 97 63
- LIGHT GREEN
CUSTOM COLOR MATCH
RGB: 102 156 50
- SW 6253 OLYMPUS WHITE
- SW 3063 CHARCOAL
- SW 7069 IRON ORE



RYAN A+E, INC.
533 South Third Street
Suite 100
Minneapolis, MN 55415
612-492-4000 tel
612-492-3000 fax

WWW.RYANCOMPANIES.COM

CONSULTANTS



KEY PLAN

PROJECT INFORMATION

SUMMIT 470 LOGISTICS

LEES SUMMIT, MO

I hereby certify that this plan, specification, or report was prepared by me or under my direct supervision and that I am a duly Registered Architect under the laws of the State of Minnesota

Name _____

REGISTRATION NO. _____ DATE _____
Number _____ Date _____

© 2022 RYAN A+E, INC.

DRAWN BY _____ CHECKED BY _____
Author _____ Checker _____
JOB NO. _____ DATE _____
0000 _____ Issue Date _____

ISSUE RECORD		
ISSUE #	DATE	DESCRIPTION
A	11/4/2022	SCHEMATIC DESIGN
	22	

PRELIMINARY
NOT FOR CONSTRUCTION

SD

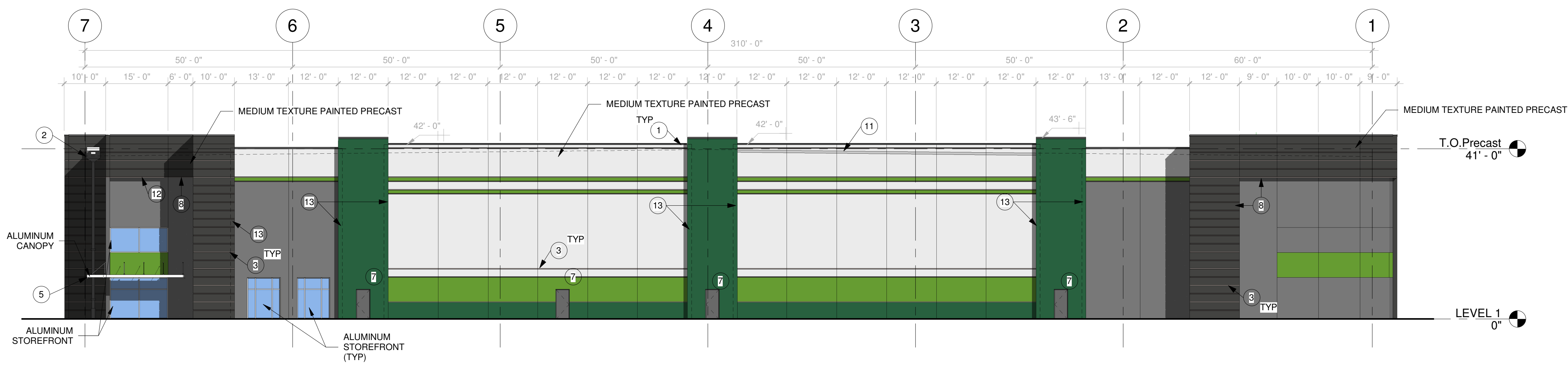
11.04.2022

EXTERIOR ELEVATIONS

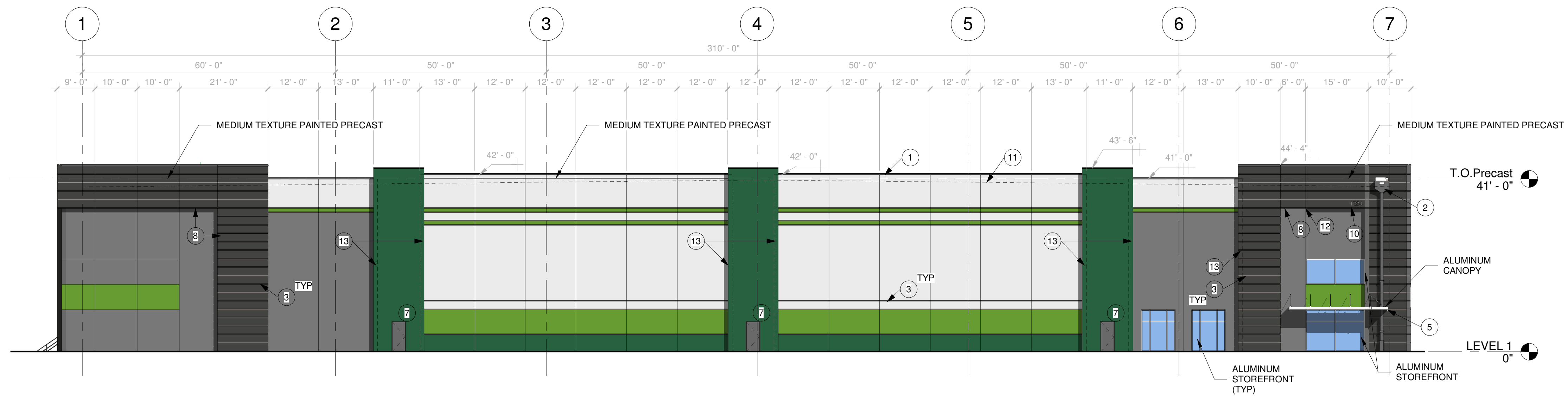
A300

NOT FOR CONSTRUCTION

3'
2'
1'
0'
VERIFY SHEET SCALE HERE



2 WEST ELEVATION
A301 1/16" = 1'-0"



1 EAST ELEVATION
A301 1/16" = 1'-0"

- ### EXTERIOR ELEVATION KEYNOTES
- 1 PREFINISHED METAL COPING WITH CONT. KEEPER
 - 2 SCUPPER, COLLECTOR HEAD AND DOWNSPOUT. COLOR TO MATCH ADJACENT PRECAST
 - 3 HORIZONTAL REVEAL
 - 4 EXPANSION JOINT
 - 5 PREFABRICATED ALUMINUM CANOPY WITH TIE BACK RODS. PROVIDE DRAINAGE SCUPPER AT EACH END
 - 6 KNOCK OUT PANEL FOR FUTURE LOADING DOCK OPENING
 - 7 EXTERIOR HOLLOW METAL DOOR AND FRAME. PAINT TO MATCH ADJACENT PRECAST
 - 8 RECESS IN PRECAST PANEL
 - 9 PANEL JOINT HERE TO HAVE PROFILE TO MATCH TYPICAL HORIZONTAL REVEAL
 - 10 12" TALL ALUMINUM BUILDING SIGNAGE. BLACK FINISH.
 - 11 ROOF LINE BEYOND
 - 12 PANEL JOINT HERE TO MATCH HORIZONTAL REVEAL PROFILE
 - 13 12" PANEL OVERLAP CONDITION

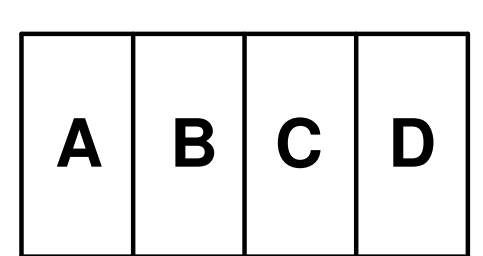
- ### EXTERIOR ELEVATION FINISH KEY
- DARK GREEN
CUSTOM COLOR MATCH
RGB: 40 97 63
 - LIGHT GREEN
CUSTOM COLOR MATCH
RGB: 102 156 50
 - SW 6253 OLYMPUS WHITE
 - SW 3063 CHARCOAL
 - SW 7069 IRON ORE



RYAN A+E, INC.
533 South Third Street
Suite 100
Minneapolis, MN 55415
612-492-4000 tel
612-492-3000 fax

WWW.RYANCOMPANIES.COM

CONSULTANTS



KEY PLAN

PROJECT INFORMATION

**SUMMIT 470
LOGISTICS**

LEES SUMMIT, MO

I hereby certify that this plan, specification, or report was prepared by me or under my direct supervision and that I am a duly Registered Architect under the laws of the State of Minnesota

Name _____

REGISTRATION NO. _____ DATE _____
Number _____ Date _____

© 2022 RYAN A+E, INC.

DRAWN BY _____ CHECKED BY _____
Author _____ Checker _____

JOB NO. _____ DATE _____
0000 _____ Issue Date _____

ISSUE RECORD		
ISSUE #	DATE	DESCRIPTION
A	11/4/2022	SCHEMATIC DESIGN

SD

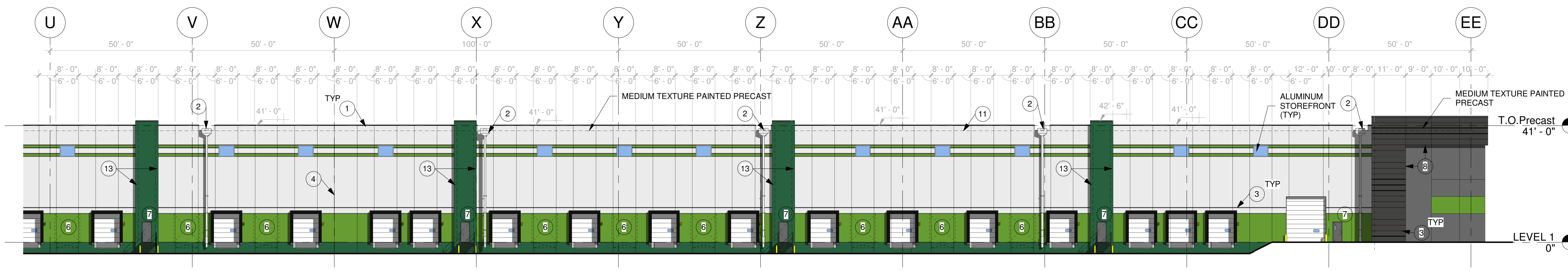
11.04.2022

EXTERIOR
ELEVATIONS

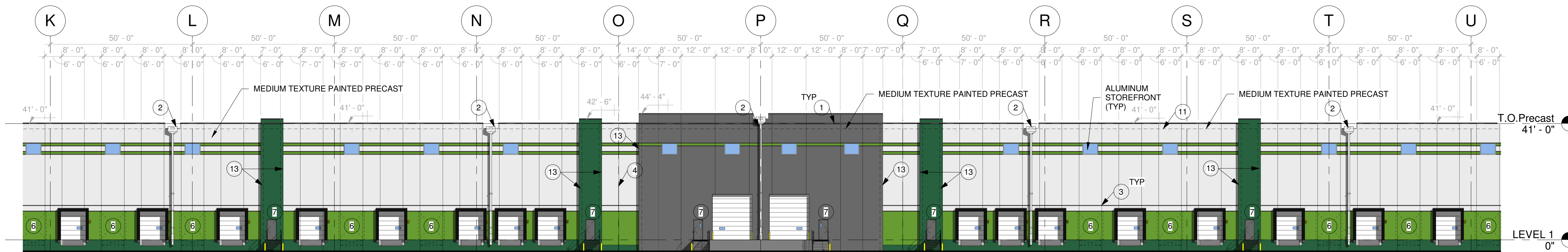
A301

NOT FOR CONSTRUCTION

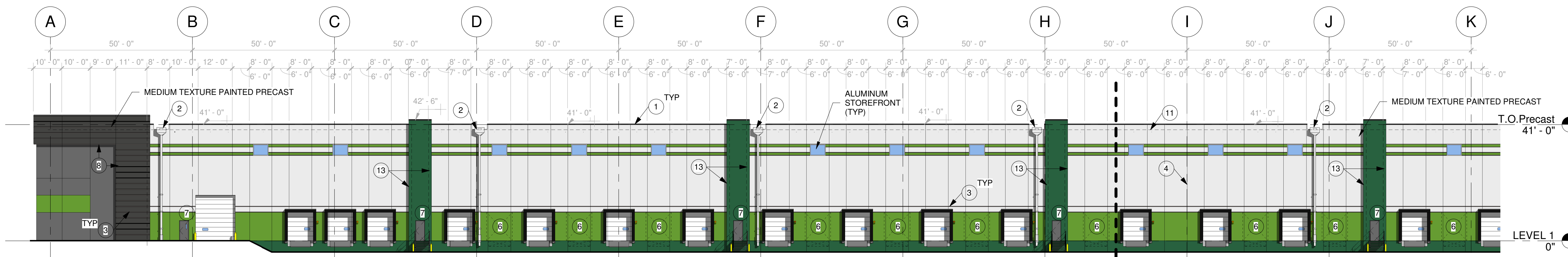
3'
2'
1'
0'
VERIFY SHEET SCALE HERE



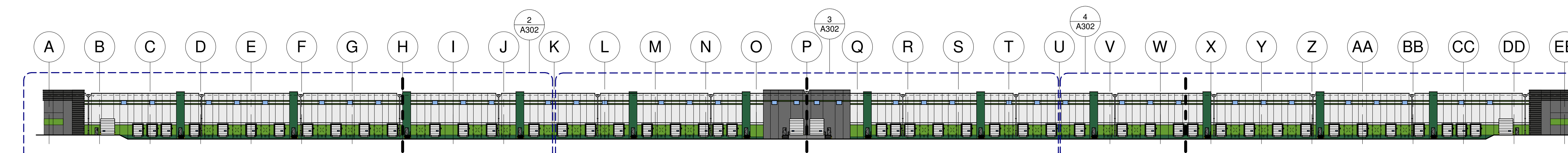
4 SOUTH ELEVATION - PARTIAL 3
A302 3/64" = 1'-0"



3 SOUTH ELEVATION - PARTIAL 2
A302 3/64" = 1'-0"



2 SOUTH ELEVATION - PARTIAL 1
A302 3/64" = 1'-0"



1 SOUTH ELEVATION - OVERALL
A302 1" = 60'-0"

EXTERIOR ELEVATION KEYNOTES

- 1 PREFINISHED METAL COPING WITH CONT. KEEPER
- 2 SCUPPER, COLLECTOR HEAD AND DOWNSPOUT. COLOR TO MATCH ADJACENT PRECAST
- 3 HORIZONTAL REVEAL
- 4 EXPANSION JOINT
- 5 PREFABRICATED ALUMINUM CANOPY WITH TIE BACK RODS. PROVIDE DRAINAGE SCUPPER AT EACH END
- 6 KNOCK OUT PANEL FOR FUTURE LOADING DOCK OPENING
- 7 EXTERIOR HOLLOW METAL DOOR AND FRAME. PAINT TO MATCH ADJACENT PRECAST
- 8 RECESS IN PRECAST PANEL
- 9 PANEL JOINT HERE TO HAVE PROFILE TO MATCH TYPICAL HORIZONTAL REVEAL
- 10 12" TALL ALUMINUM BUILDING SIGNAGE. BLACK FINISH.
- 11 ROOF LINE BEYOND
- 12 PANEL JOINT HERE TO MATCH HORIZONTAL REVEAL PROFILE
- 13 12" PANEL OVERLAP CONDITION

EXTERIOR ELEVATION FINISH KEY

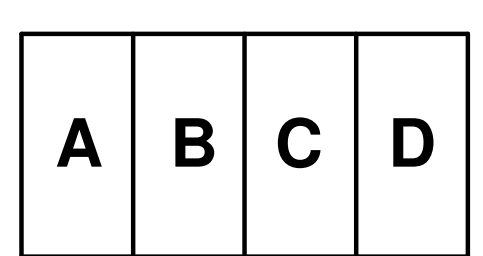
- DARK GREEN
CUSTOM COLOR MATCH
RGB: 40 97 63
- LIGHT GREEN
CUSTOM COLOR MATCH
RGB: 102 156 50
- SW 6253 OLYMPUS WHITE
- SW 3063 CHARCOAL
- SW 7069 IRON ORE



RYAN A+E, INC.
533 South Third Street
Suite 100
Minneapolis, MN 55415
612-492-4000 tel
612-492-3000 fax

WWW.RYANCOMPANIES.COM

CONSULTANTS



KEY PLAN

PROJECT INFORMATION

SUMMIT 470 LOGISTICS

LEES SUMMIT, MO

I hereby certify that this plan, specification, or report was prepared by me or under my direct supervision and that I am a duly Registered Architect under the laws of the State of Minnesota

Name _____

REGISTRATION NO. _____ DATE _____
Number _____ Date _____

© 2022 RYAN A+E, INC.

DRAWN BY _____ CHECKED BY _____
Author _____ Checker _____
JOB NO. _____ DATE _____
0000 _____ Issue Date _____

ISSUE RECORD		
ISSUE #	DATE	DESCRIPTION
A	11/4/2022	SCHEMATIC DESIGN
22		

PRELIMINARY
NOT FOR CONSTRUCTION

SD

11.04.2022

EXTERIOR ELEVATIONS

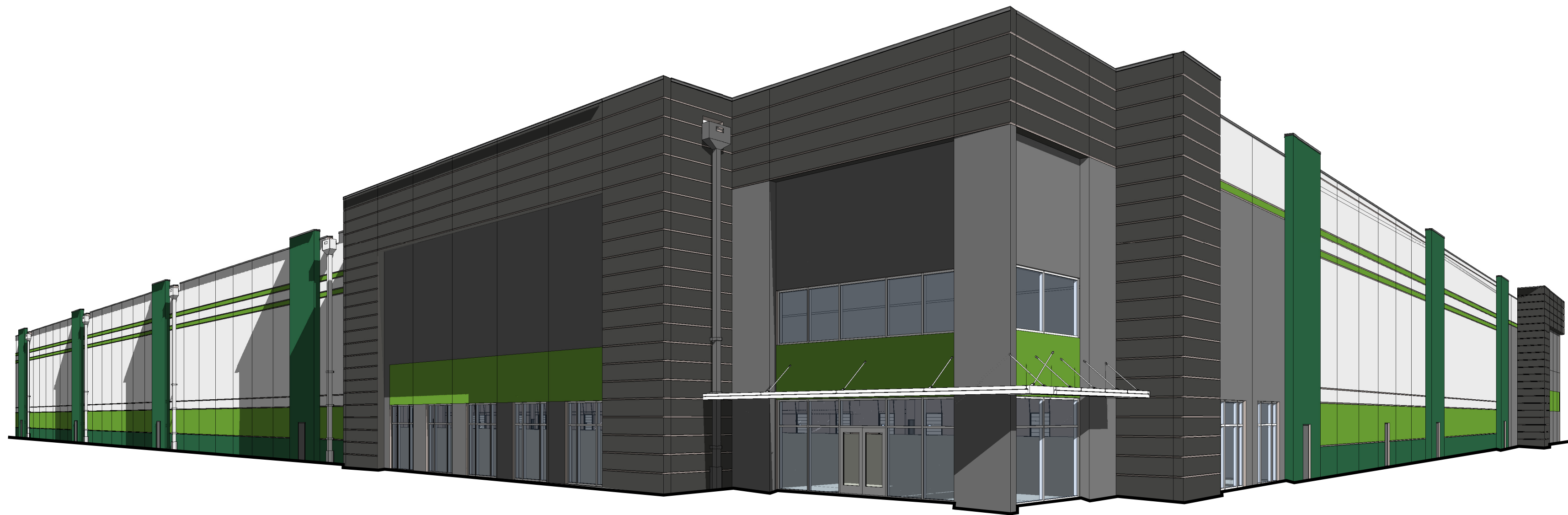
A302

NOT FOR CONSTRUCTION

3'
2'
1'
0'
VERIFY SHEET SCALE HERE



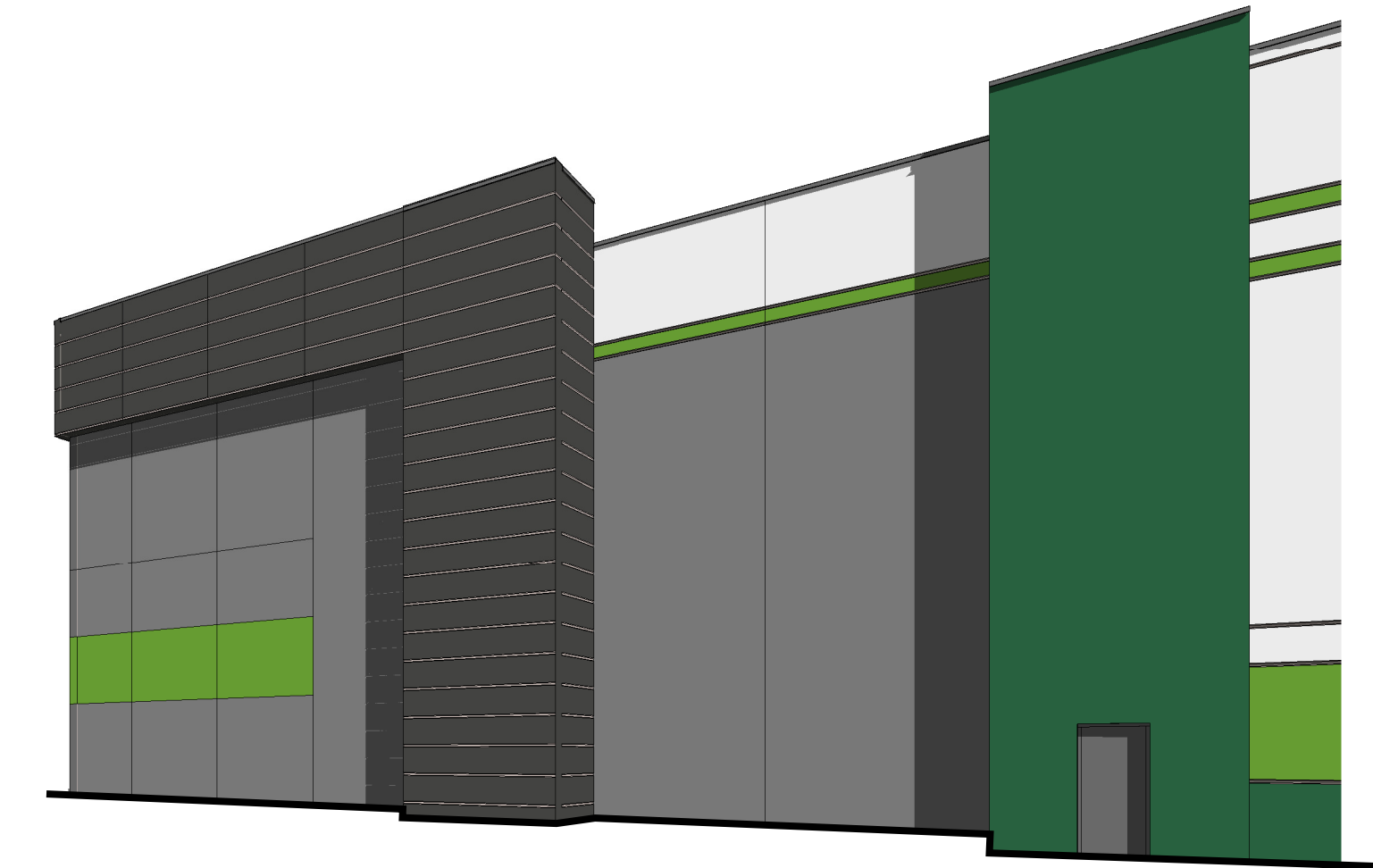
1 NE CORNER
A303



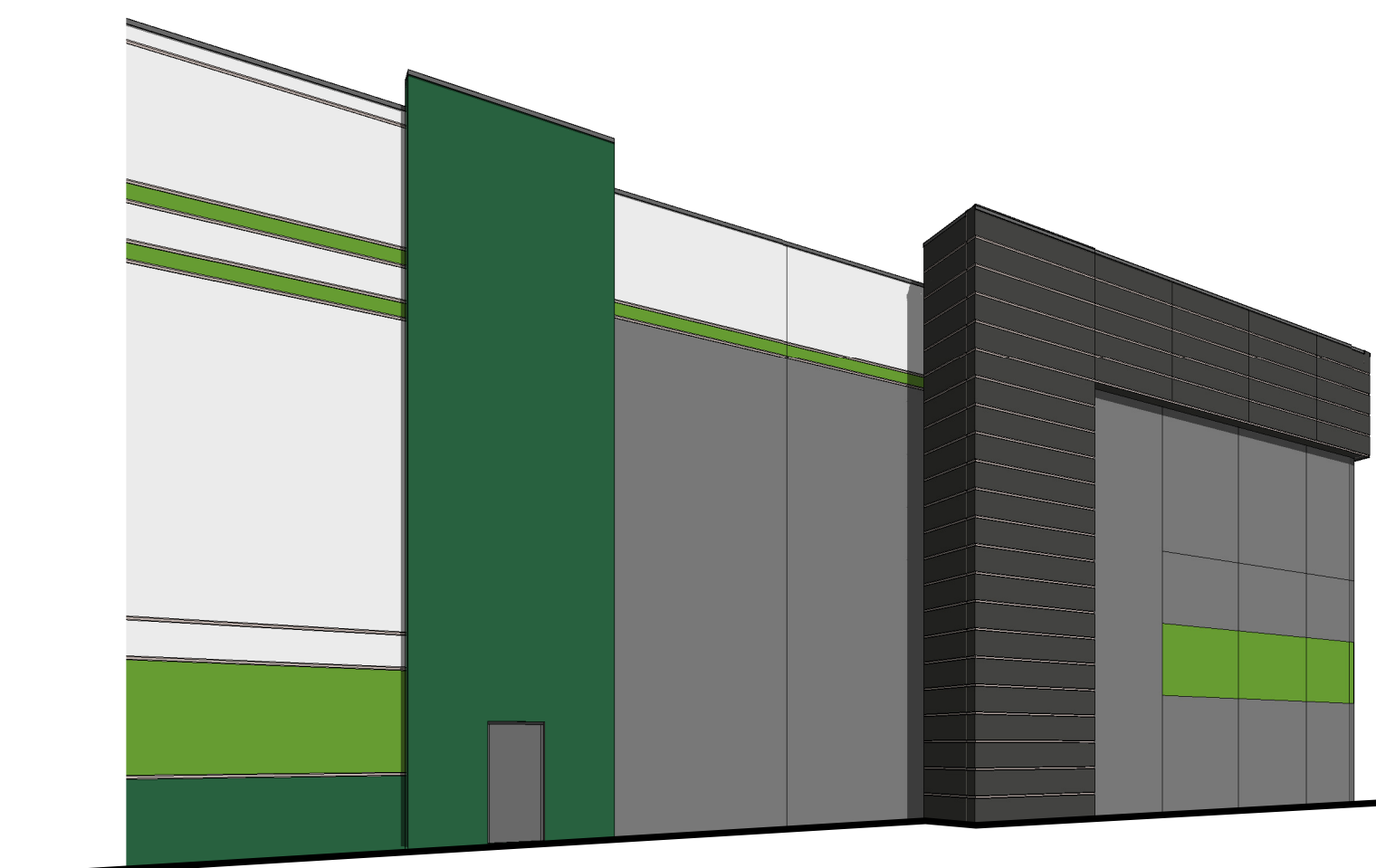
2 NW CORNER
A303



4 N ENTRY
A303



3 SE CORNER
A303



5 SW CORNER
A303

RYAN

RYAN A+E, INC.
533 South Third Street
Suite 100
Minneapolis, MN 55415
612-492-4000 tel
612-492-3000 fax

WWW.RYANCOMPANIES.COM

CONSULTANTS

olsson
RE

A	B	C	D
---	---	---	---

KEY PLAN

PROJECT INFORMATION

**SUMMIT 470
LOGISTICS**

LEES SUMMIT, MO

I hereby certify that this plan, specification, or report was prepared by me or under my direct supervision and that I am a duly Registered Architect under the laws of the State of Minnesota

Name _____

REGISTRATION NO. DATE
Number Date

© 2022 RYAN A+E, INC.

DRAWN BY CHECKED BY
Author Checker
JOB NO. DATE
0000 Issue Date

ISSUE RECORD		
ISSUE #	DATE	DESCRIPTION

SD

11.04.2022

PERSPECTIVE
VIEWS

A303

NOT FOR CONSTRUCTION