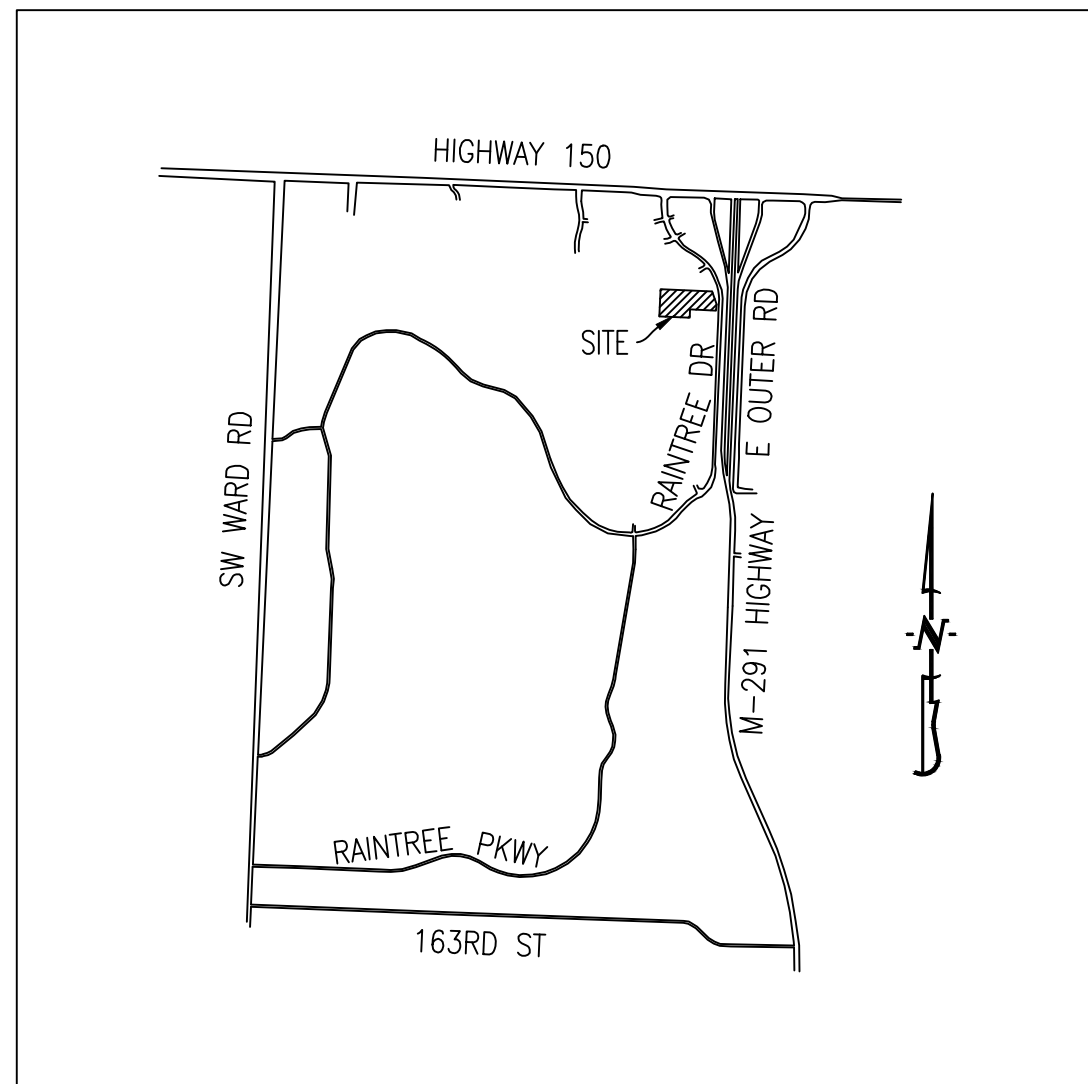


**LOCATION MAP**

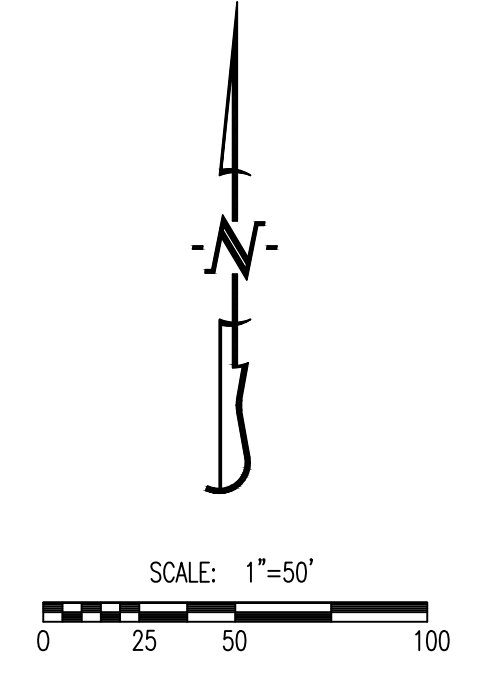


**LEGAL DESCRIPTION:**

LOT 1A, SOUTH M-291 SAFETY MINI STORAGE LOTS 1A, 2A & 3A, RECORDED INSTRUMENT NO. 20060028581, A SUBDIVISION IN LEE'S SUMMIT, JACKSON COUNTY, MISSOURI.

**LANDSCAPING NOTE:**

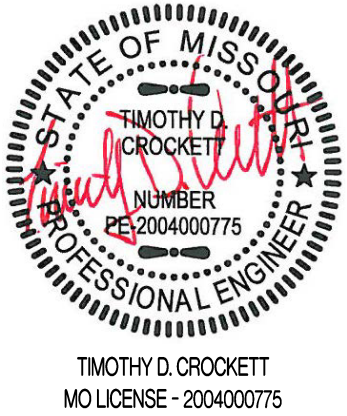
OWNER SHALL ENSURE THAT CURRENT LANDSCAPING MEETS THE APPROVED APPROVED LIGHTING & LANDSCAPING PLAN FOR SOUTH M-291 SAFETY MINI STORAGE DATED 11/07/2003, APPROVED STAMP DATE 12/09/2003. IF THERE ARE ANY DEFICIENCIES TO THE LANDSCAPING PLAN THE OWNER SHALL BRING THE SITE TO MEET THE APPROVED PLAN.



**REVISIONS:**

NO.	DATE
ORIGINAL	08/19/2019
1	10/14/2019

THIS SHEET HAS BEEN SIGNED, SEALED AND DATED ELECTRONICALLY



**CROCKETT**  
 SITE/CIVIL ENGINEER  
 2511 STADIUM BLVD, SUITE 207  
 COLUMBIA, MO 65203  
 www.crockettengineering.com  
 Missouri License No. 2004000775

**OWNER:**  
 NEW TIG-STORAGEMART PARTNERS LP/LLC  
 2511 STADIUM BLVD, SUITE 207  
 COLUMBIA, MO 65203

**STORAGE MART 156**  
 3920 S. STATE ROUTE 291  
 SECTION 3, TOWNSHIP 47 NORTH, RANGE 31 WEST  
 LEE'S SUMMIT, JACKSON COUNTY, MISSOURI

**DRAWING INCLUDES:**

SITE PLAN

DESIGNED: TDC

DRAWN: JEE

PROJECT NO.: 170604

SHEET: 10F1