



LEE'S SUMMIT
MISSOURI®

Chapel Oaks Maintenance Storage Facility
657 NE Newport Dr.
Special Use Permit
PL2025-164

Project Request

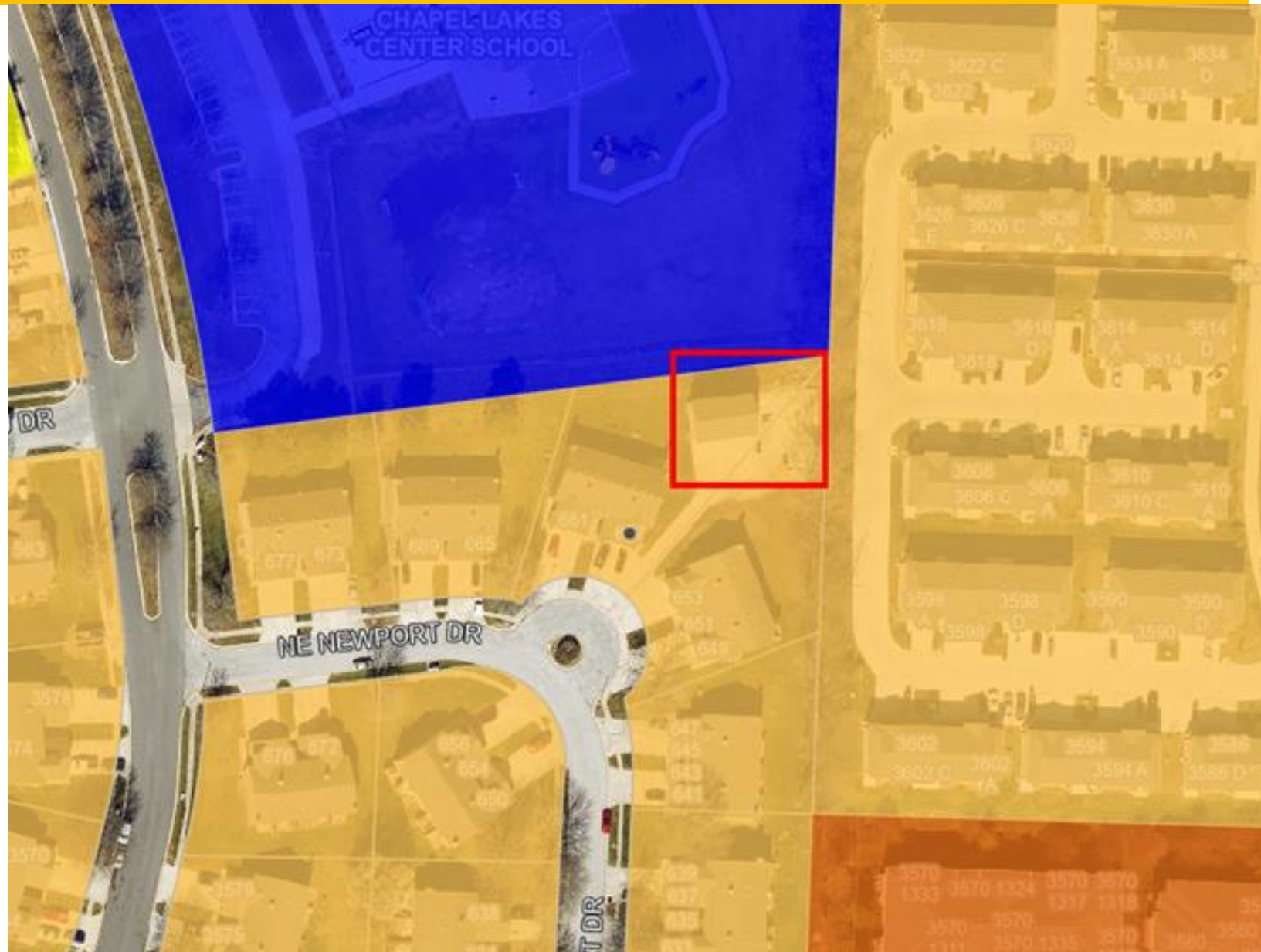
Proposed special use permit renewal to allow the continued operation of a maintenance storage facility.

Applicants' requests approval for 10 years.



Ignite! Future Land Use Map

- Activity Center Downtown
- Activity Center New Longview
- Activity Center North PRI
- Activity Center South PRI
- Activity Center Summit
- Airport
- Civic
- Commercial
- Industrial
- Infrastructure
- Mixed Use
- Office
- Parks/Open Space
- Residential 1
- Residential 2
- Residential 3
- Water Bodies



Project Information

Number and Proposed Use of Buildings

1 maintenance storage facility

Building Size

2,080 sq. ft.

Number of Stories

2

A neighborhood meeting was held on February 9, 2026. Zero (0) members of the public attended.



Approval Conditions

1. All equipment and materials shall be stored inside the building.
2. The special use permit shall be granted for a period of ten (10) years, from the previous expiration date, to expire on October 17, 2035



LEE'S SUMMIT
MISSOURI®

Chapel Oaks Maintenance Storage Facility
657 NE Newport Dr.
Special Use Permit
PL2025-164