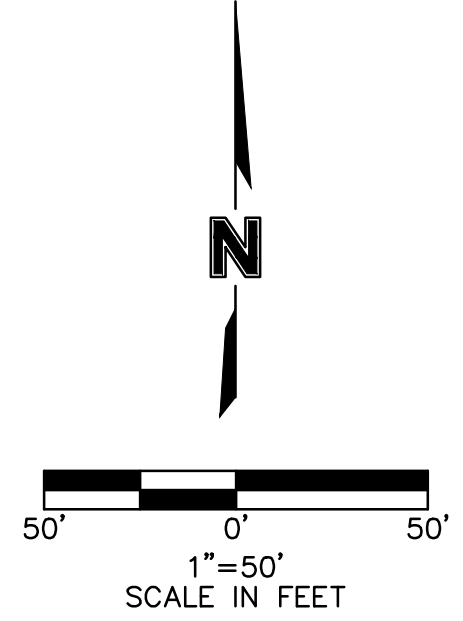
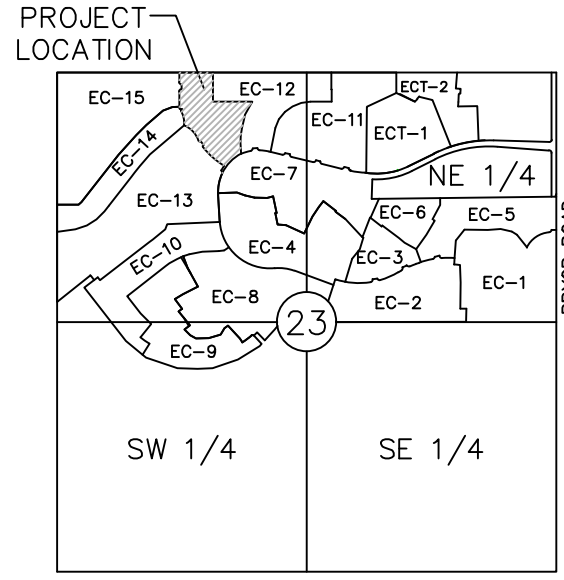
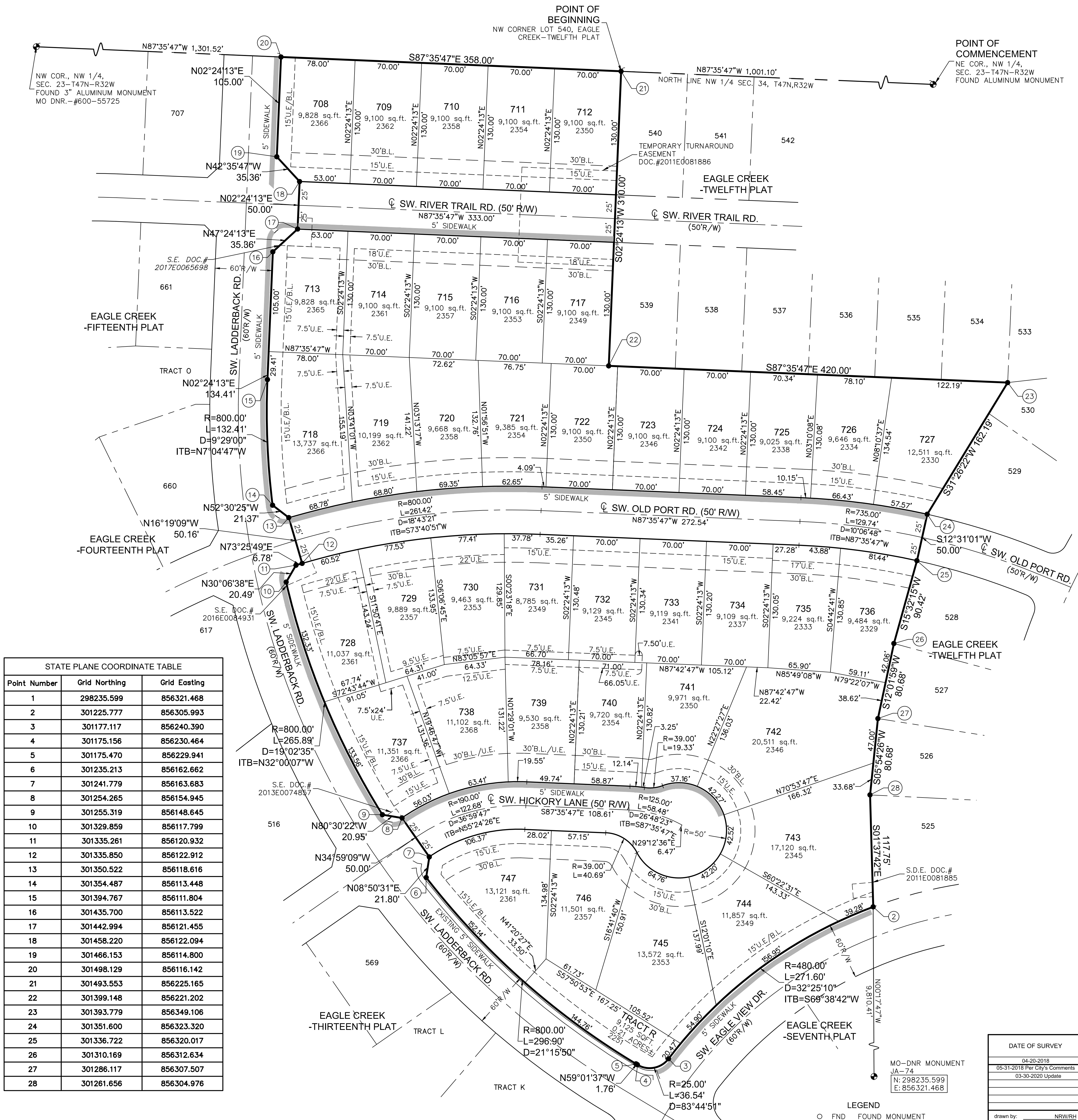


FINAL PLAT OF
EAGLE CREEK-SIXTEENTH PLAT
 (Lots 708 thru 747 Inclusive, and Tract R)
 NW 1/4, SEC. 23 - Twp. 47 N. - Rge. 32 W.
 LEE'S SUMMIT, JACKSON COUNTY, MISSOURI



LOCATION MAP
 Sec. 23, Twp. 47 N., Rge. 32 W.
 (N.T.S.)



STATE PLANE COORDINATE TABLE		
Point Number	Grid Northing	Grid Easting
1	298235.599	856321.468
2	301225.777	856305.993
3	301177.117	856240.390
4	301175.156	856230.464
5	301175.470	856229.941
6	301235.213	856162.662
7	301241.779	856163.683
8	301254.265	856154.945
9	301255.319	856148.645
10	301329.859	856117.799
11	301335.261	856120.932
12	301335.850	856122.912
13	301350.522	856118.616
14	301394.487	856111.804
15	301394.767	856111.804
16	301435.700	856113.522
17	301442.994	856121.455
18	301458.220	856122.094
19	301466.153	856114.800
20	301498.129	856116.142
21	301493.553	856225.165
22	301399.148	856221.202
23	301393.779	856349.106
24	301351.600	856323.320
25	301336.722	856320.017
26	301310.169	856312.634
27	301286.117	856307.507
28	301261.656	856304.976

This is to certify that the within plat of EAGLE CREEK-SIXTEENTH PLAT, LOTS 708 THRU 747, INCLUSIVE, AND TRACT R, was submitted to and duly approved by the Mayor and City Council of the City of Lee's Summit, Missouri this _____ day of _____, 2020, by Ordinance No. _____

APPROVED: _____ Date _____
 George M. Binger III, P.E.
 City Engineer

APPROVED: _____ Date _____
 Ryan A. Elam, P.E.
 Director of Development Services

APPROVED: _____ Date _____
 William A. Baird
 Mayor

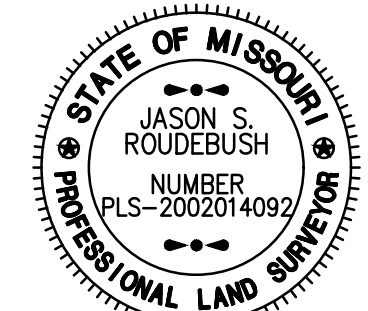
APPROVED: _____ Date _____
 Carla Dial
 Planning Commission Secretary

APPROVED: _____ Date _____
 Trisha Fowler Arcuri
 City Clerk

APPROVED: _____ Date _____
 Vincent E. Brice
 Jackson County GIS

This plat and survey of EAGLE CREEK-SIXTEENTH PLAT, LOTS 708 THRU 747, INCLUSIVE, AND TRACT R, were executed by Olsson Associates, 1301 Burlington Street #100, North Kansas City, Missouri 64116.

I HEREBY CERTIFY that the Plat of EAGLE CREEK-SIXTEENTH PLAT, LOTS 708 THRU 747, INCLUSIVE, AND TRACT R, subdivision is based on an actual survey made by me or under my direct supervision and that said survey meets or exceeds the current Missouri Standards for Property Boundary Surveys as established by the Missouri Board for Architects, Professional Engineers, Professional Surveyors and Landscape Architects and the Missouri Department of Agriculture. I further certify that I have complied with all statutes, ordinances, and regulations governing the practice of surveying and platting of subdivisions to the best of my professional knowledge and belief.



OLSSON MO CLS 366
 Jason S. Roudebush, MO PLS 2002014092
 March 30, 2020
 jrroudebush@olsson.com

- LEGEND
- FND FOUND MONUMENT
 - SCR SECTION CORNER
 - SET SET MONUMENT
 - R RADIUS
 - L ARC DISTANCE
 - D DELTA / CENTRAL ANGLE
 - S.D.E. SURFACE DRAINAGE EASEMENT
 - U.E. UTILITY EASEMENT
 - S.E. SANITARY SEWER EASEMENT

DATE OF SURVEY	
04-20-2018	
05-31-2018 Per City's Comments	
03-30-2020 Update	

drawn by: _____
 surveyed by: _____
 checked by: _____
 approved by: _____
 project no.: _____
 file name: V_FPT_80847.DWG

