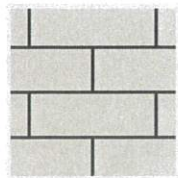
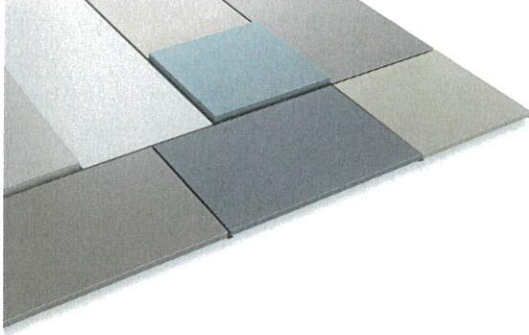
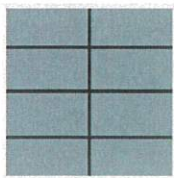


Modular AL

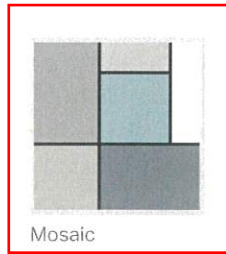
METAL WALL PANEL SYSTEM



Running Bond



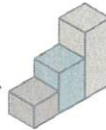
Stacked



Mosaic

Depth Range

1 3/8-in. to 3-in.



Scan to view AR model. Place it in your space, walk around it.



PRODUCT FEATURES

- ▶ Flat or tapered
- ▶ No sealants
- ▶ Concealed fasteners
- ▶ Easy installation
- ▶ Can be perforated
- ▶ Custom Sizes
- ▶ 30-year finish warranty
- ▶ Made of 100% recycled aluminum
- ▶ Full fabrication package on all projects
- ▶ Weep holes for pressure and moisture venting
- ▶ Mix and match panel depths and sizes
- ▶ Stacked and running bond designs available

TESTING

- ▶ E283
- ▶ E331
- ▶ E330
- ▶ AAMA 508

MATERIALS

.050 Aluminum

.063 Aluminum

.080 Aluminum

MAXIMUM DIMENSIONS

24-in. by 120-in.

24-in. by 120-in.

30-in. by 120-in.

Standard Sizes

24" x 72", 24" x 120"

Depth range

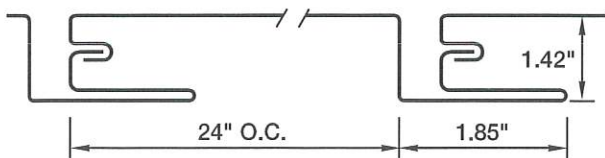
1 3/8-in. to 3-in.

Joint range

1/2-in. to 1-in

Custom sizes

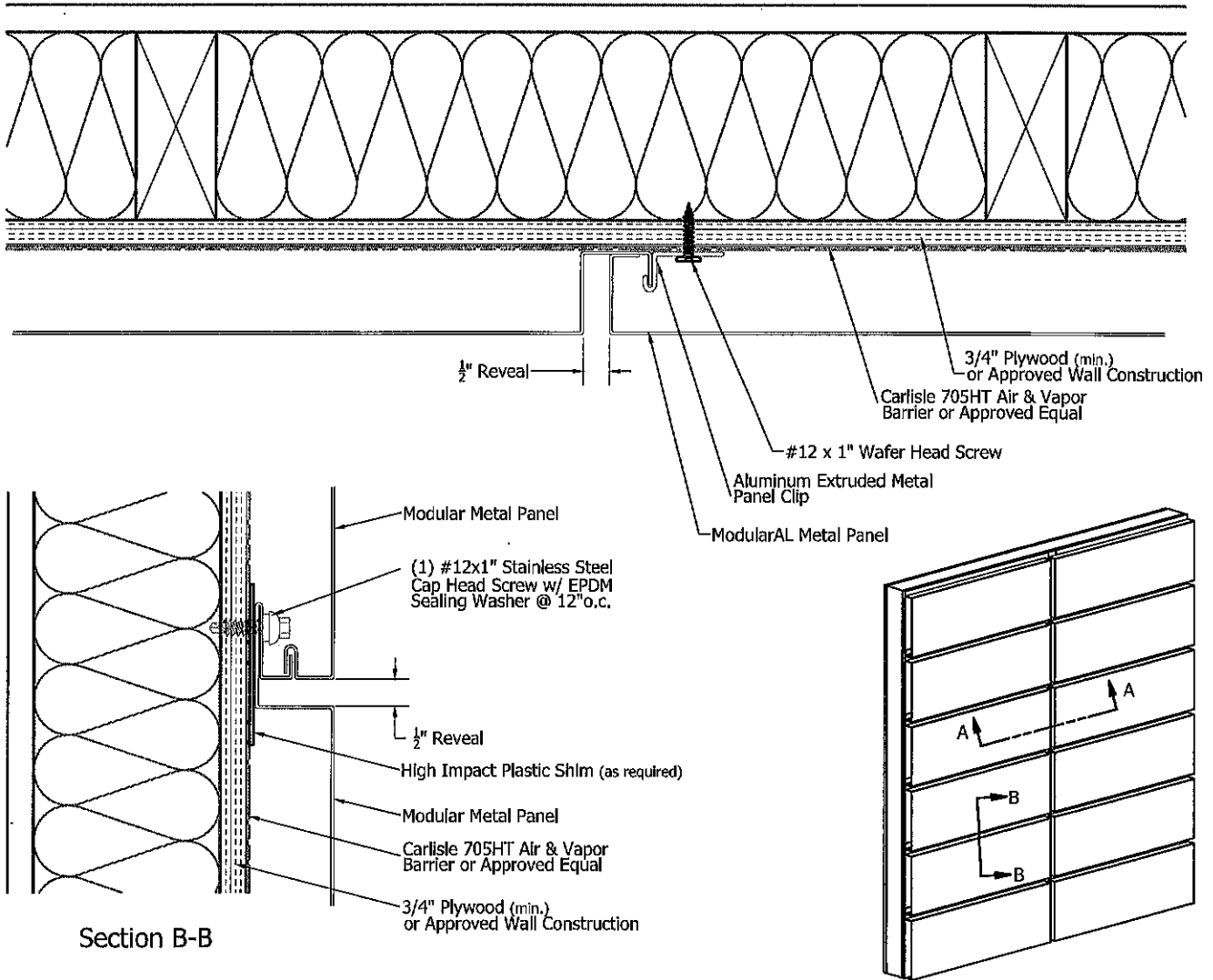
Consult factory rep



NOTES:

- Shims Are Not Required For Metal Panel Unless There Are Imperfections In Wall Construction.
- If Imperfections, Use High Impact Plastic Shims.
- (Standard Wall Construction Deviation is Less Than 1/4" In 20'-0" In All Directions).

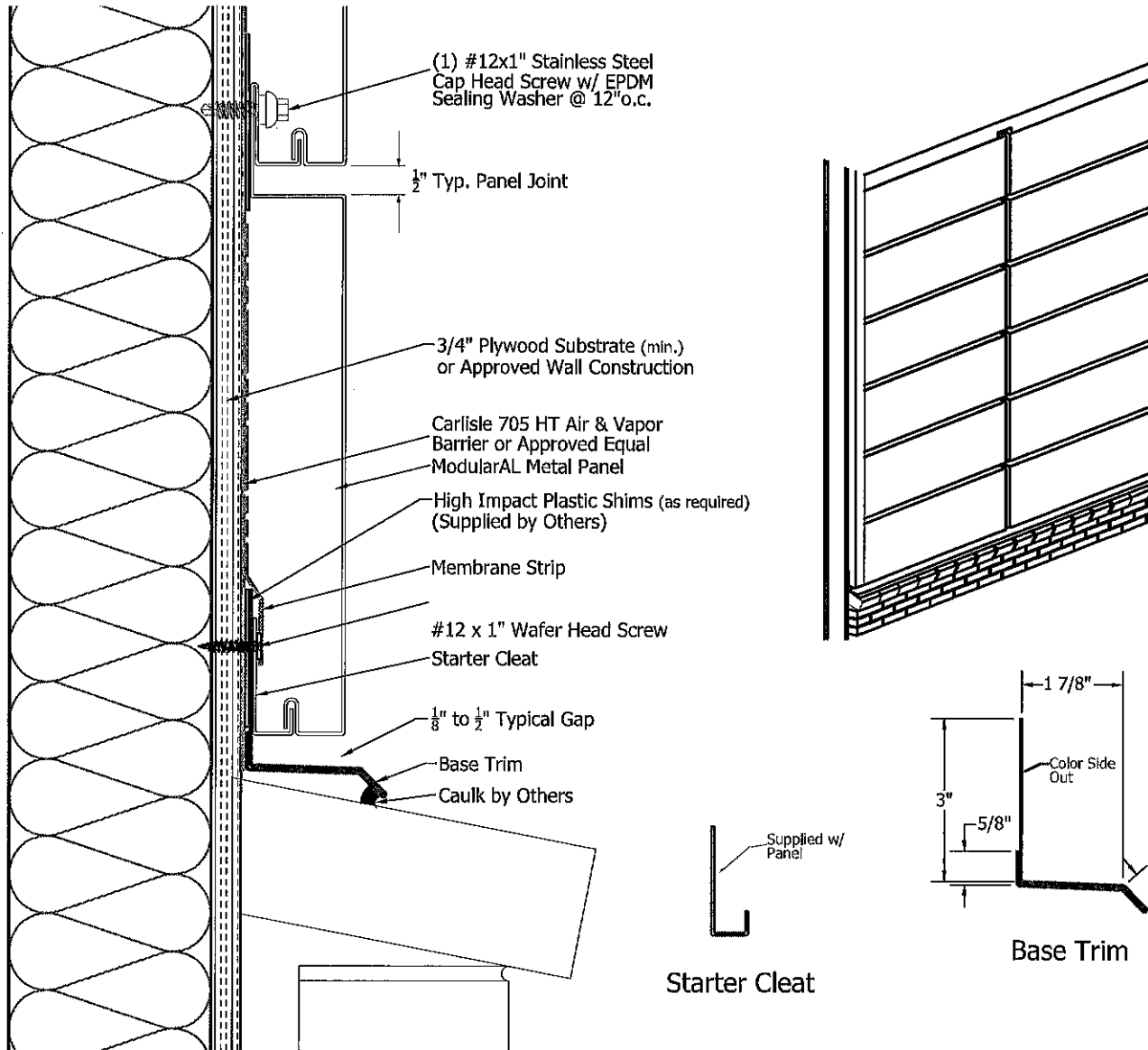
Section A-A



JOB NAME	NOTES
DATE	
CONTRACTOR	

NOTES:

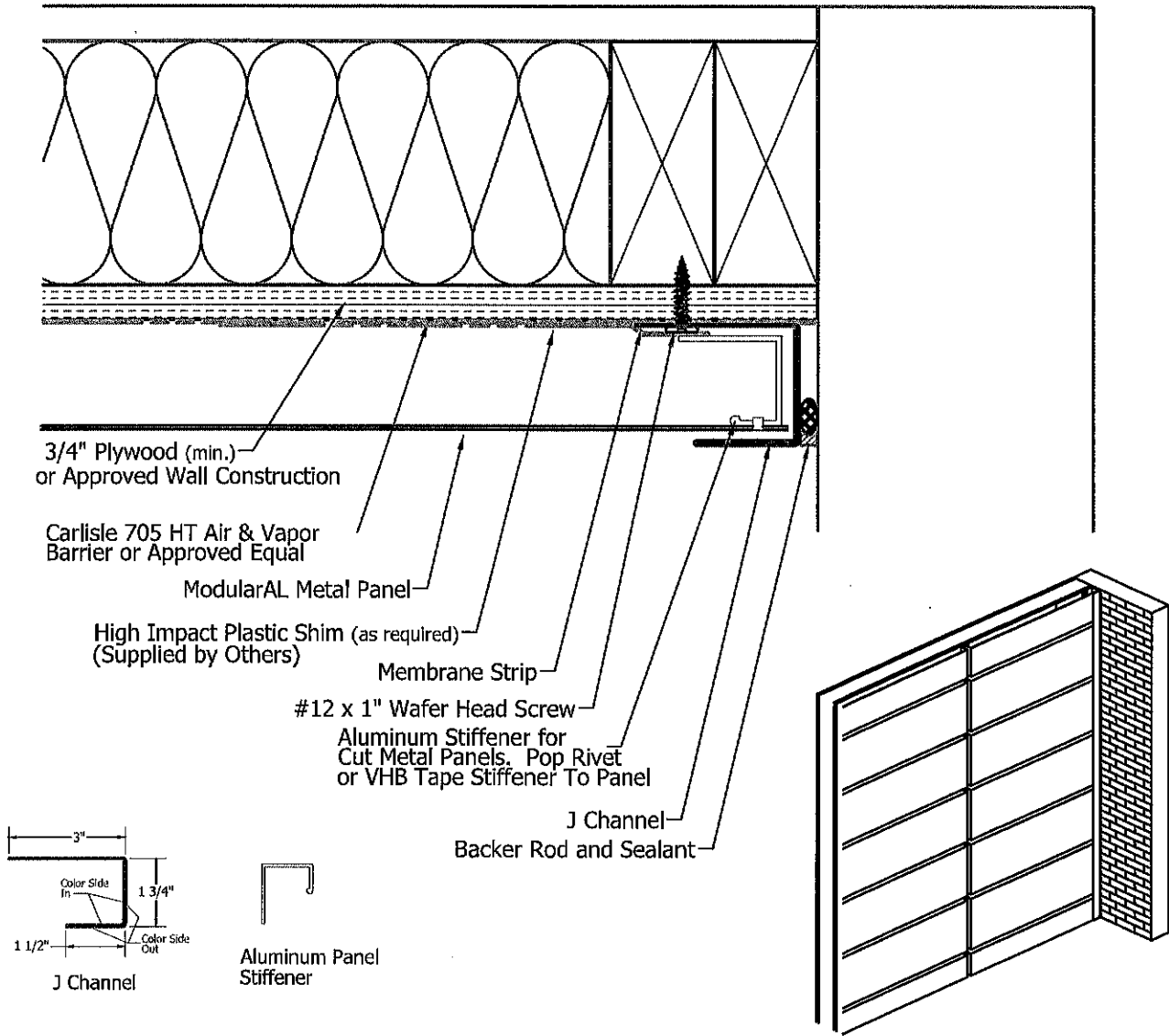
- Shims Are Not Required For Metal Panel Unless There Are Imperfections In Wall Construction.
- If Imperfections, Use High Impact Plastic Shims.
- (Standard Wall Construction Deviation is Less Than 1/4" In 20'-0" In All Directions).



JOB NAME	NOTES
DATE	
CONTRACTOR	

NOTES:

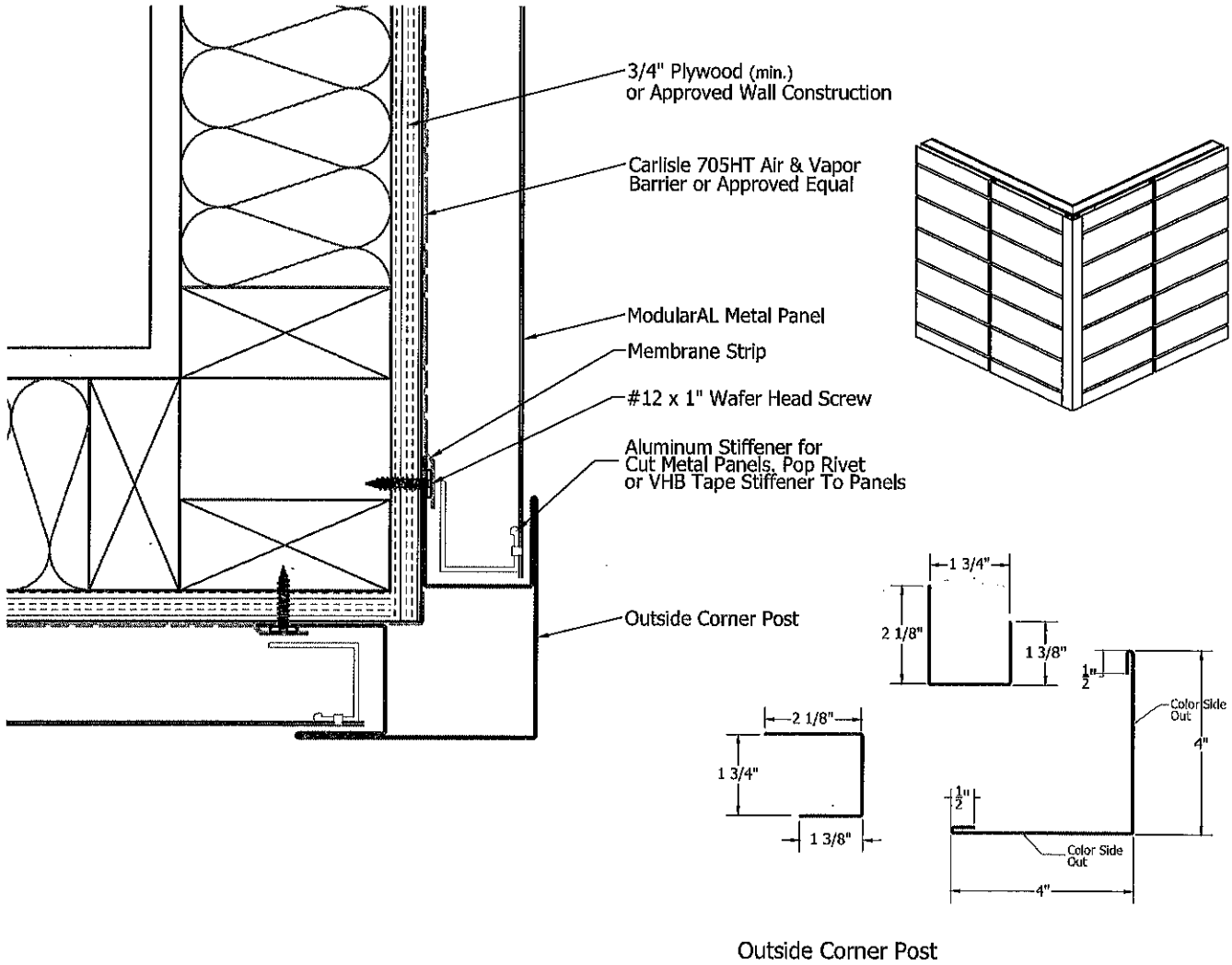
- Shims Are Not Required For Metal Panel Unless There Are Imperfections In Wall Construction.
- If Imperfections, Use High Impact Plastic Shims.
- (Standard Wall Construction Deviation is Less Than 1/4" In 20'-0" In All Directions).



JOB NAME	NOTES
DATE	
CONTRACTOR	

NOTES:

- Shims Are Not Required For Metal Panel Unless There Are Imperfections In Wall Construction.
- If Imperfections, Use High Impact Plastic Shims.
- (Standard Wall Construction Deviation is Less Than 1/4" In 20'-0" In All Directions).



JOB NAME	NOTES
DATE	
CONTRACTOR	