

PROJECT SCHEDULE

SIGN TYPE/ DESCRIPTION:	QTY.:	PG.
A. INTERNALLY ILLUMINATED FACE-LIT CHANNEL LETTERS W/ BACKGROUND PANEL ON WIREWAY (EYEMART)	ONE (1)	5
B. INTERNALLY ILLUMINATED FACE-LIT CHANNEL LETTERS W/ BACKGROUND PANEL ON WIREWAY (EYE EXAMS)	ONE (1)	6
C. INTERNALLY ILLUMINATED FACE-LIT CHANNEL LETTERS W/ BACKGROUND PANEL ON WIREWAY (EYEMART)	ONE (1)	7
D. INTERNALLY ILLUMINATED FACE-LIT CHANNEL LETTERS W/ BACKGROUND PANEL ON WIREWAY (EYEMART)	ONE (1)	8
E. VINYL DOOR GRAPHICS (EYEMART)	TWO (2)	11
F. VINYL STORE HOURS (EYEMART)	ONE (1)	12
G. VINYL OFFICE HOURS (OPTOMETRIST)	ONE (1)	13
H. VINYL DOOR GRAPHICS (SERVICE DOOR - EYEMART)	ONE (1)	14
I. ILLUMINATED INTERIOR SIGN - "EXPRESS LAB"	ONE (1)	15
J. ILLUMINATED INTERIOR SIGN - "OPTOMETRIST"	ONE (1)	16
K. INTERIOR "EYEMART EXPRESS" VINYL GRAPHICS	TWO (2)	18
L. INTERIOR "DOORS TO REMAIN..." VINYL GRAPHICS	TWO (2)	19
FF 1. FRAMED FABRIC GRAPHIC #1 - SUNSHINE	ONE (1)	20
FF 2. FRAMED FABRIC GRAPHIC #2 - COUPLE WALKING	ONE (1)	21
FF 3. FRAMED FABRIC GRAPHIC #3 - YOUTH	ONE (1)	22
FF 4. FRAMED FABRIC GRAPHIC #4 - COUPLE COOKING	ONE (1)	23
FF 5. FRAMED FABRIC GRAPHIC #5 - BUSINESS MEETING	ONE (1)	24
FF 6. FRAMED FABRIC GRAPHIC #6 - FAMILY BAKING	ONE (1)	25
FF 7. FRAMED FABRIC GRAPHIC #7 - RIGHT GLASSES	ONE (1)	26
FF 8. FRAMED FABRIC GRAPHIC #8 - RIGHT PRICE	ONE (1)	27
FF 9. FRAMED FABRIC GRAPHIC #9 - RIGHT NOW	ONE (1)	28
FF 10. FRAMED FABRIC GRAPHIC #10 - TIME	ONE (1)	29
FF 11. FRAMED FABRIC GRAPHIC #11 - VALUE	ONE (1)	30
FF 12. FRAMED FABRIC GRAPHIC #12 - STYLE	ONE (1)	31
AA. D/S PRINTED VINYL BANNER	ONE (1)	34
BB. D/S PARKING SIGNS	TWO (2)	35

PROJECT:

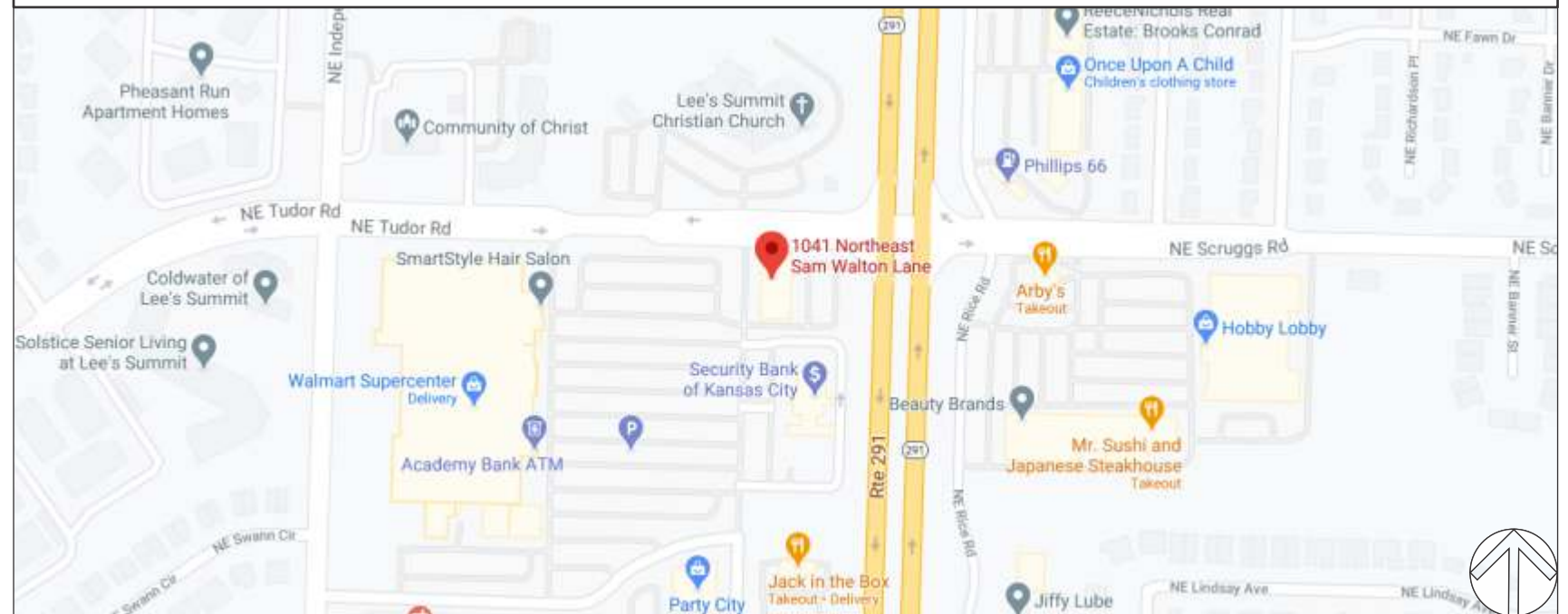


**WALMART SUPERCENTER
1041 NE SAM WALTON LANE
LEE'S SUMMIT, MO 64086**

REVISIONS

#	DATE	DB	NOTES
R6	2/15/2021	MAF	REMOVED SIGNS "C" & "D" FROM SCOPE; SHOWING CORRECT SQ. FOOTAGES.
R7	3/4/2021	MAF	ADJUSTED SQ. FOOTAGES FOR STOREFRONT SIGNAGE TO 64 SQ. FT. TOTAL.

VICINITY MAP



CLIENT & LOCATION



WALMART SUPERCENTER
1041 NE SAM WALTON LANE
LEE'S SUMMIT, MO 64086

LEAD NO.

195389 R7

DATE

11/9/2020

REVIEWED BY

REVISION

SHEET NO.

SALESMAN

S. ALTSHULER

DRAWN BY

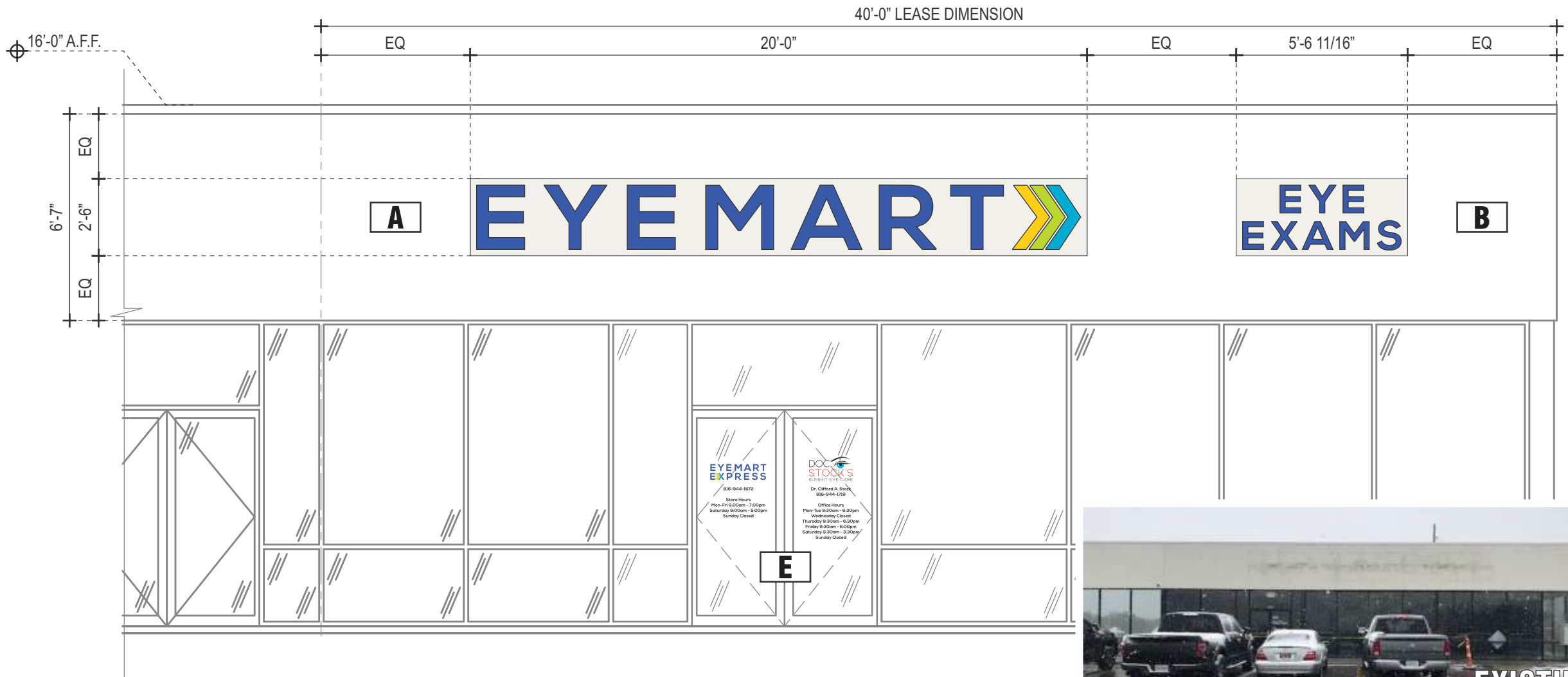
MAF

SEG. NO.

1 of 35

STOREFRONT ELEVATION - RTE 291

SCALE: 1/4" = 1'-0"



TRIANGLE
SIGN SERVICES

CLIENT & LOCATION

EYEMART

WALMART SUPERCENTER
1041 NE SAM WALTON LANE
LEE'S SUMMIT, MO 64086

LEAD NO.
195389 R7

DATE
11/9/2020

REVIEWED BY

REVISION

SHEET NO.

SALESMAN
S. ALTSHULER

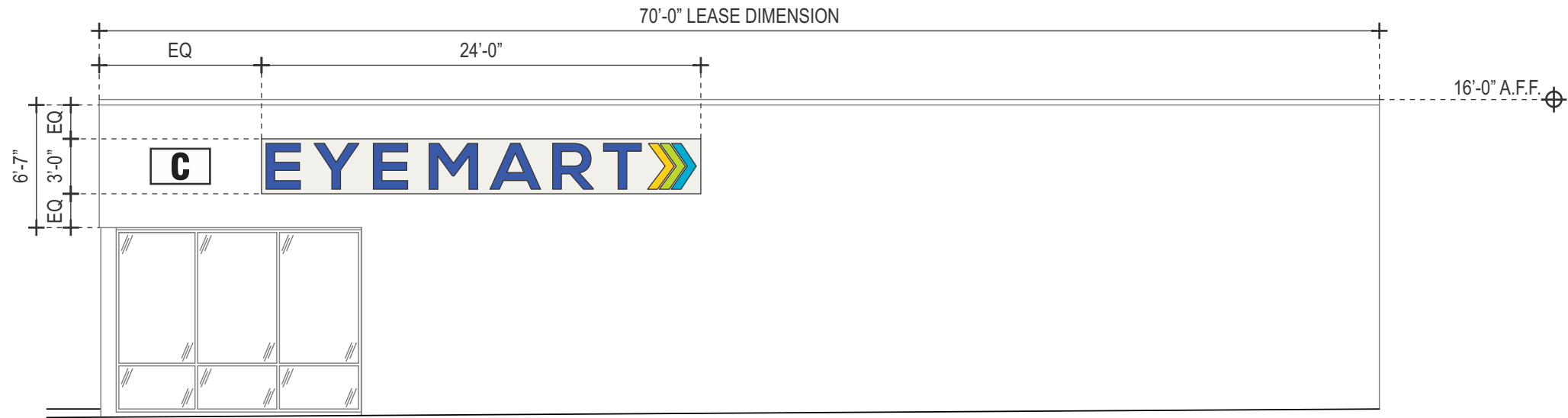
DRAWN BY
MAF

SEG. NO.

2 of 35

SIDE ELEVATION - NE TUDOR ROAD

SCALE: 1/8" = 1'-0"



EXISTING

TRIANGLE
SIGN SERVICES

CLIENT & LOCATION

EYEMART

WALMART SUPERCENTER
1041 NE SAM WALTON LANE
LEE'S SUMMIT, MO 64086

LEAD NO.
195389 R7

DATE
11/9/2020

REVIEWED BY

REVISION

SHEET NO.

SALESMAN
S. ALTSHULER

DRAWN BY
MAF

SEG. NO.

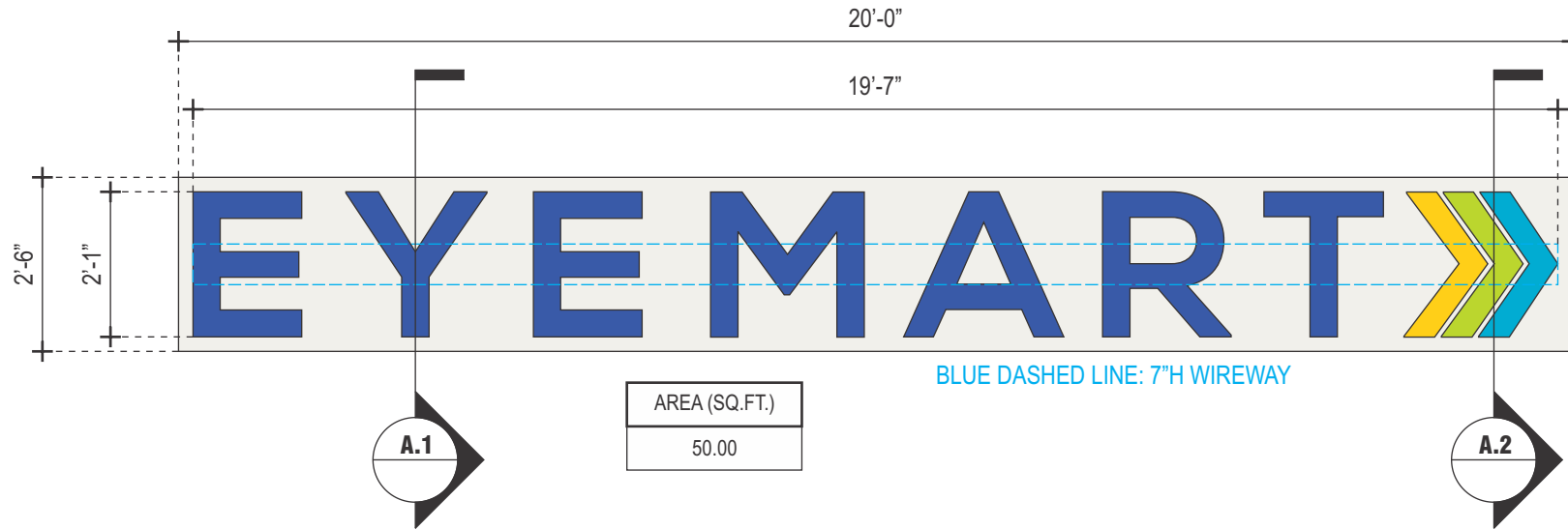
3 of 35

A

INTERNALLY ILLUMINATED FACE-LIT CHANNEL LETTERS W/ BACKGROUND PANEL ON WIREWAY

SCALE: 3/8" = 1'-0"

QTY.: ONE (1)



TRIANGLE
SIGN SERVICES

CLIENT & LOCATION

EYEMART

WALMART SUPERCENTER
1041 NE SAM WALTON LANE
LEE'S SUMMIT, MO 64086

LEAD NO.
195389 R7

DATE
11/9/2020

REVIEWED BY

REVISION

SHEET NO.

SALESMAN
S. ALTSHULER

DRAWN BY
MAF

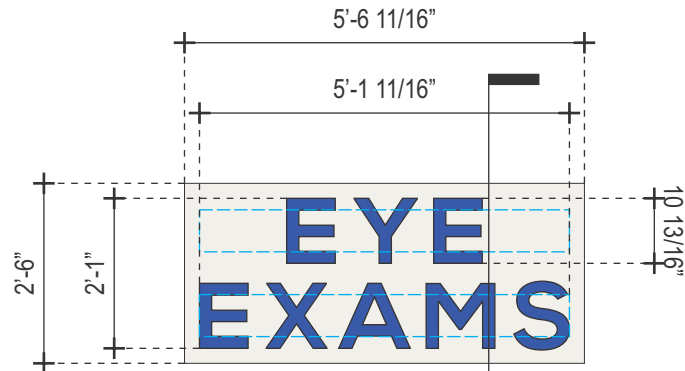
SEG. NO.

B

INTERNALLY ILLUMINATED FACE-LIT CHANNEL LETTERS W/ BACKGROUND PANEL ON WIREWAY

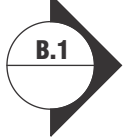
SCALE: 3/8" = 1'-0"

QTY.: ONE (1)



BLUE DASHED LINE: 7"H WIREWAYS (TOP ACCESS FOR TOP RACEWAY/BOTTOM ACCESS FOR BOTTOM WIREWAY)

AREA (SQ.FT.)
13.89



TRIANGLE
SIGN SERVICES

CLIENT & LOCATION

EYEMART

WALMART SUPERCENTER
1041 NE SAM WALTON LANE
LEE'S SUMMIT, MO 64086

LEAD NO.

195389 R7

DATE

11/9/2020

REVIEWED BY

REVISION

SHEET NO.

SALESMAN

S. ALTSHULER

DRAWN BY

MAF

SEG. NO.

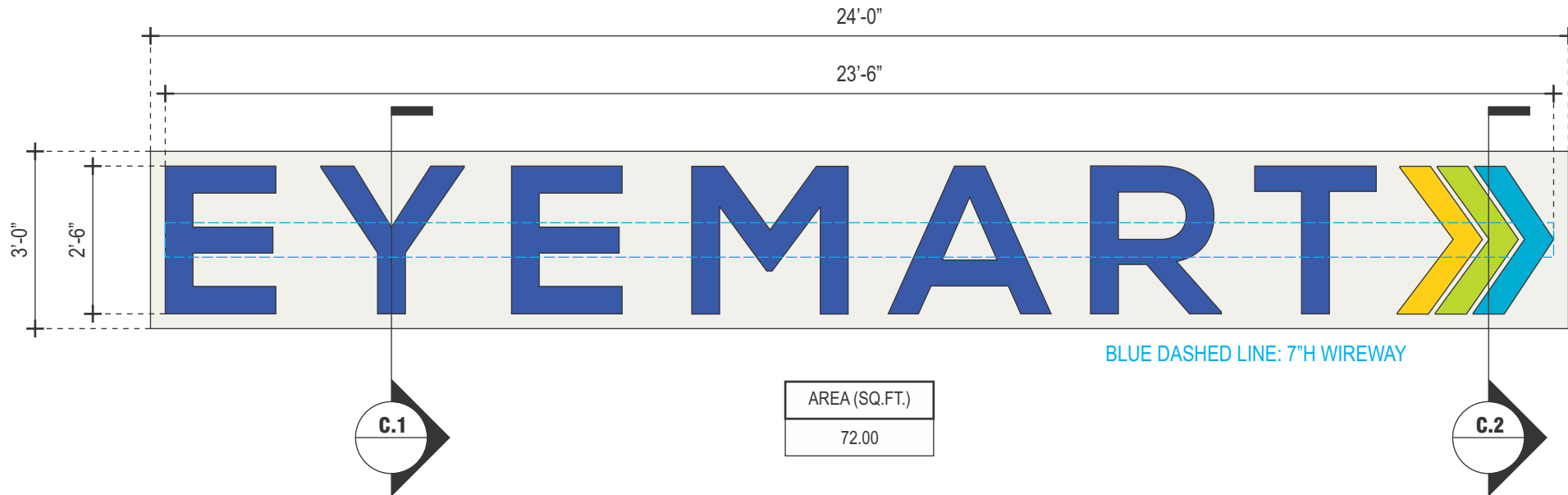
6 of 35

C

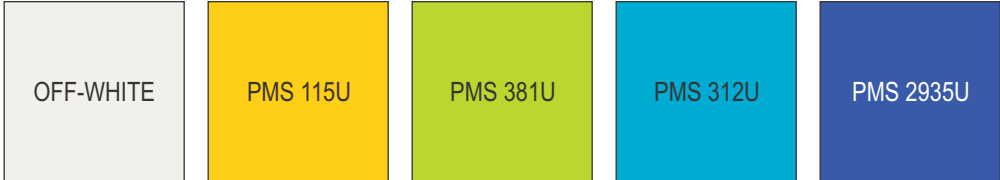
INTERNALLY ILLUMINATED FACE-LIT CHANNEL LETTERS W/ BACKGROUND PANEL ON WIREWAY

SCALE: 3/8" = 1'-0"

QTY.: ONE (1)



AREA (SQ.FT.)
72.00

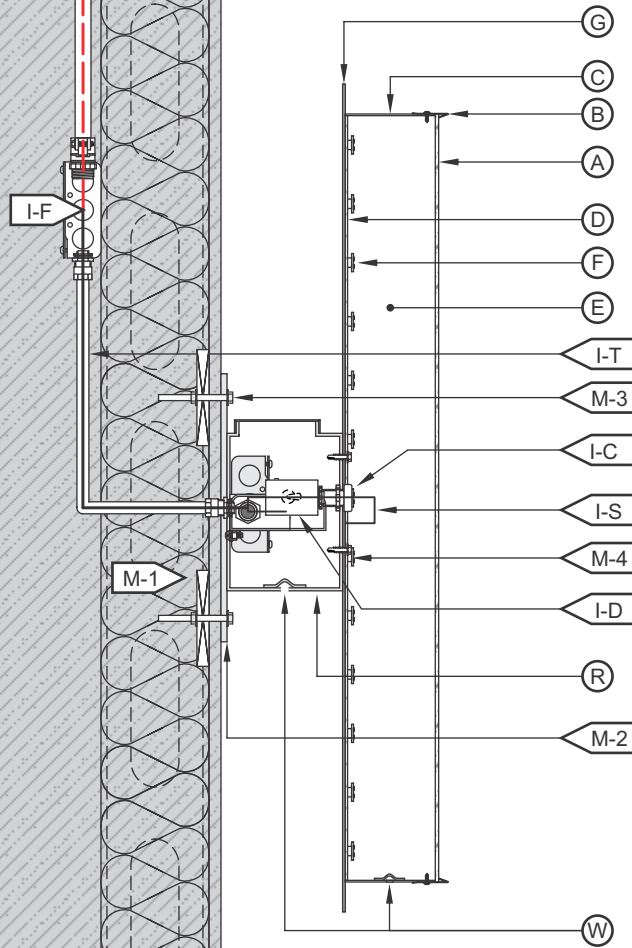


	CLIENT & LOCATION 	WALMART SUPERCENTER 1041 NE SAM WALTON LANE LEE'S SUMMIT, MO 64086	LEAD NO. 195389 R7	DATE 11/9/2020	REVIEWED BY	REVISION	SHEET NO. 7 of 35
			SALESMAN S. ALTSHULER	DRAWN BY MAF	SEG. NO.		

A.1 B.1 C.1 D.1

SCALE: N.T.S.

FACE-LIT CHANNEL LETTERS / LED ILLUMINATION / EXTERIOR INSTALL / WIREWAY MOUNTED / BG PANEL



(A) FACE	
MATERIAL:	3/16" WHITE PLEX #2447.
VINYL:	3M PERFORATED DAY/NIGHT EFFECT; 1ST SURFACE
COLOR:	PAINT TO MATCH PMS 2935U
(B) TRIMCAP	
SIZE / FINISH	1" / MATCH RETURNS.
(C) RETURN	
DEPTH:	5".
MATERIAL:	0.040" ALUM.
COLOR/ FINISH:	OFF-WHITE/ SATIN.
(D) BACK	
MATERIAL:	3MM ACM.
COLOR/ FINISH:	OFF-WHITE/ SATIN.
(E) INSIDE OF CAN	
COLOR:	PRE-COAT WHITE.
(F) ILLUMINATION	
TYPE/COLOR:	LEDS/6500K WHITE
(G) BG PANEL	
MATERIAL:	1/8" ALUMINUM
COLOR/FINISH:	OFF-WHITE/SATIN
	OFF-WHITE
	PMS 2935U

(I) WIRING	
I-C:	BUSHING.
I-D:	DISCONNECT SWITCH @ SIDE OF RACEWAY.
I-F:	SEE ELEC. NOTE. 120V PRIMARY IN J-BOX BY OTHERS.
I-T:	14awg FEED IN 1/2"Ø SEAL-TITE w/ 1/2" CONNECTORS.
I-J:	STANDARD JUNCTION BOX.
I-H:	W.P. BOX @ DISCONNECT SWITCH.
I-P:	LIQUID TIGHT CONNECTOR.
I-S:	U.L. APPROVED CLASS II LOW VOLTAGE WIRE. (ALL CONNECTIONS TO BE IN WATERPROOF BOXES).
(J) POWER SUPPLY	
TYPE:	LED POWER SUPPLY HOUSE IN RACEWAY.
VOLTAGE:	120V.
(R) WIREWAY	
MATERIAL:	7" x 4" ALUM. LED EXTRUSION RACEWAY, TOP ACCESS.
COLOR/ FINISH:	PAINT TO MATCH EXISTING FASCIA FINISH.
(M) MOUNTING	
M-1:	SEE MOUNTING NOTE. REQ'D. BLOCKING BY OTHERS.
M-2:	MOUNTING BARS 2"W. x 1/4" ALUM. w/ 3/4"Ø MNTG. HOLE.
M-3:	3/8"Ø ALLTHREAD, NUT & WASHERS INTO BLOCKING BEYOND.
M-4:	SELF-TAPPING SCREW.
(W) WEEP HOLE	
TYPE:	1/4"Ø w/ COVERS.

**120V
INSTALL**

1. CUSTOMER G.C. TO PROVIDE ADEQUATE WOOD OR MTL. BLOCKING IN CORRELATION W/ FACADE FRAMING AS REQUIRED.
2. INSTALLER IS TO V.I.F. & PROVIDE THE PROPER NON-CORROSIVE MOUNTING HARDWARE TO ENSURE SAFE INSTALLATION.
3. ALL EXTERIOR FACADE PENETRATIONS TO BE WATERTIGHT.
4. INSTALLATION TO MEET CURRENT N.E.C., U.L. & LOCAL CODES. LOCATION OF THE DISCONNECT SWITCH AFTER INSTALLATION SHALL COMPLY WITH ARTICLE 600.6(A) (1) OF THE NATION ELECTRICAL CODE

ELECTRICAL

1. ALL ELECTRICAL COMPONENTS TO BE U.L. APPROVED.
2. CUSTOMER IS RESPONSIBLE FOR ONE (1) 120v/ 20a DEDICATED CIRCUIT w/ GROUND PER SIGN TO WITHIN 6' OF SIGN.
3. THIS SIGN IS INTENDED TO BE INSTALLED IN ACCORDING W/ THE REQUIREMENTS OF ARTICLE 600 OF THE NATIONAL ELECTRICAL CODE AND/OR OTHER APPLICABLE LOCAL CODES. THIS INCLUDES PROPER GROUNDING & BONDING OF THE SIGN.

FABRICATOR

1. PLACEMENT OF LIGHTING ELEMENTS FOR OPTIMUM ILLUMINATION OF SIGN TO BE DETERMINED IN PRODUCTION.
2. MANUFACTURER & U.L. LABELS TO BE APPLIED & VISIBLE FROM THE GROUND. LOCATED ON THE LAST CHANNEL LETTER OR END OF THE SIGN BOX/FREESTANDING SIGN



ALL ELECTRICAL COMPONENTS ARE TO BE UL APPROVED

**TRIANGLE
SIGN SERVICES**

CLIENT & LOCATION

EYEMART

WALMART SUPERCENTER
1041 NE SAM WALTON LANE
LEE'S SUMMIT, MO 64086

LEAD NO.
195389 R7

SALESMAN
S. ALTSHULER

DATE
11/9/2020

DRAWN BY
MAF

REVIEWED BY

SEG. NO.

REVISION

SHEET NO.

9 of 35