

(1) EIFS - DRYVIT COLOR: WHITE SAND SW9582	(2) NICHHA FIBER CEMENT BOARD (SW DB BLUE)	(3) BRICK VENEER: CLOUD CERAMICS - COLOR: CORONADO - TEXTURE: VELOUR
(4) METAL TRIM- FASCIA/ PAINT DUTCH BROS DARK GRAY	PREFINISHED CLEAR ANODIZED ALUM. STOREFRONT	(HEWN) SOFFIT MATERIAL UNDER THE LARGE CANOPY

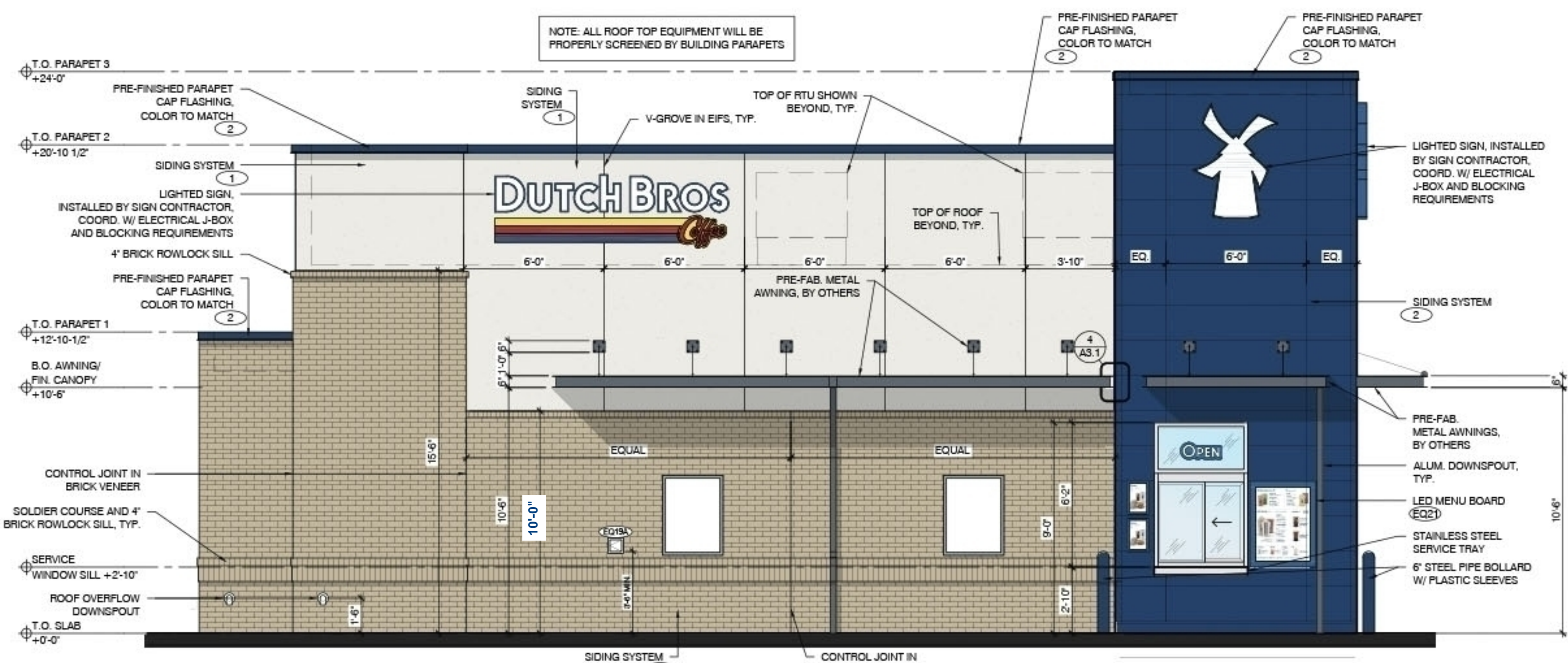
EXTERIOR FINISH SQUARE FOOTAGE SCHEDULE

BRICK	EIFS	NICHIHA	GLASS	FAÇADE
NORTH ELEVATION				
428.19 SF	342.1 SF	219.84 SF	24.7 SF	1014.54 SF
42% OF FAÇADE	34% OF FAÇADE	22% OF FAÇADE	2% OF FAÇADE	
EAST ELEVATION				
328.06 SF	113.38 SF	105.88 SF	0 SF	601.55 SF
55% OF FAÇADE	18% OF FAÇADE	18% OF FAÇADE	0% OF FAÇADE	
SOUTH ELEVATION				
573.23 SF	318.84 SF	45.7 SF	74.3 SF	1016.4 SF
58% OF FAÇADE	31% OF FAÇADE	5% OF FAÇADE	7% OF FAÇADE	
WEST ELEVATION				
271.87 SF	80.42 SF	220.69 SF	57.81 SF	594.1 SF
46% OF FAÇADE	14% OF FAÇADE	37% OF FAÇADE	9% OF FAÇADE	

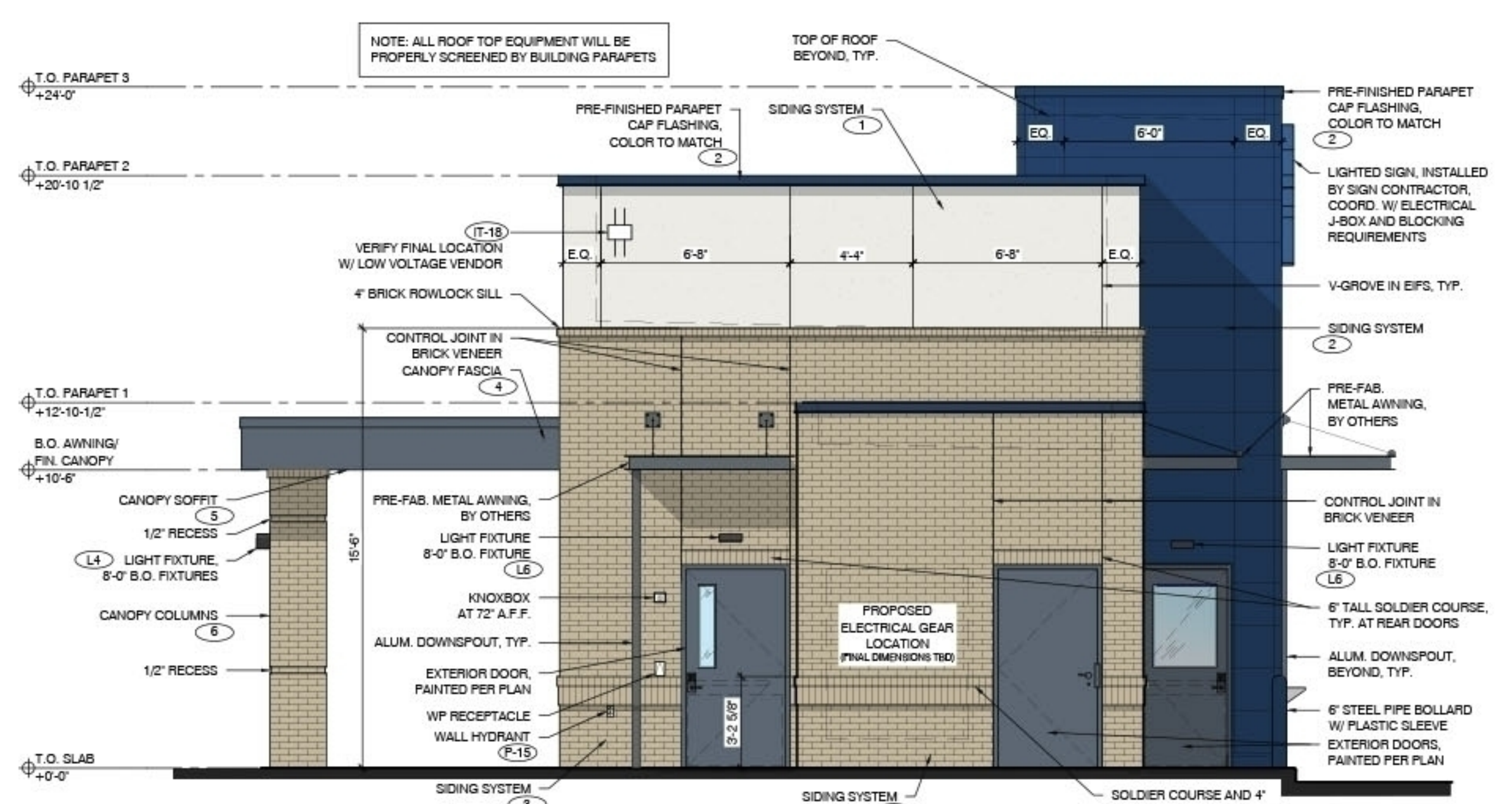
EXTERIOR FINISH SCHEDULE - PROTOTYPICAL w/ CANOPY

ID TAG	MATERIAL	MANUFACTURER	MODEL	REMARKS
ZONE 1 (BODY)				
1	EIFS	DRYVIT	OUTSULATION EIF SYSTEM	COLOR: WHITE SAND SW9582
ZONE 2 (TOWER)				
2	FIBER CEMENT SIDING	NICHIHA	ILLUMINATION. AWP 1818 W/ MATCHING PANEL CORNERS	COLOR: BLDG DB BLUE
ZONE 3 (BASE)				
3	BRICK VENEER AND SILL	CLOUD CERAMICS	FACE BRICK - FULL VENEER MODULAR- 2 1/4" H. X 3 5/8" W. X 7 5/8" L	COLOR: CORONADO TEXTURE: VELOUR
ZONE 4 (FRAMED CANOPY)				
4	FASCIA	WESTERN STATES METAL ROOFING	T-GROOVE, 10"	3 SIDES; COLOR: BLDG DB DARK GRAY
5	SOFFIT	HEWN ELEMENTS	NATURAL NORTHWESTERN SPRUCE	1x8, T&G, 1/8" REVEAL, SEALED
6	COLUMNS	CLOUD CERAMICS	FACE BRICK - FULL VENEER MODULAR- 2 1/4" H. X 3 5/8" W. X 7 5/8" L	COLOR: CORONADO TEXTURE: VELOUR

NOTE: GC TO PROVIDE 3"x2" SMOOTH DOWNSPOUTS, AND ALL NECESSARY ADAPTORS, AT AWNING AND CANOPY LOCATIONS; COLOR: BLDG DB DARK GRAY



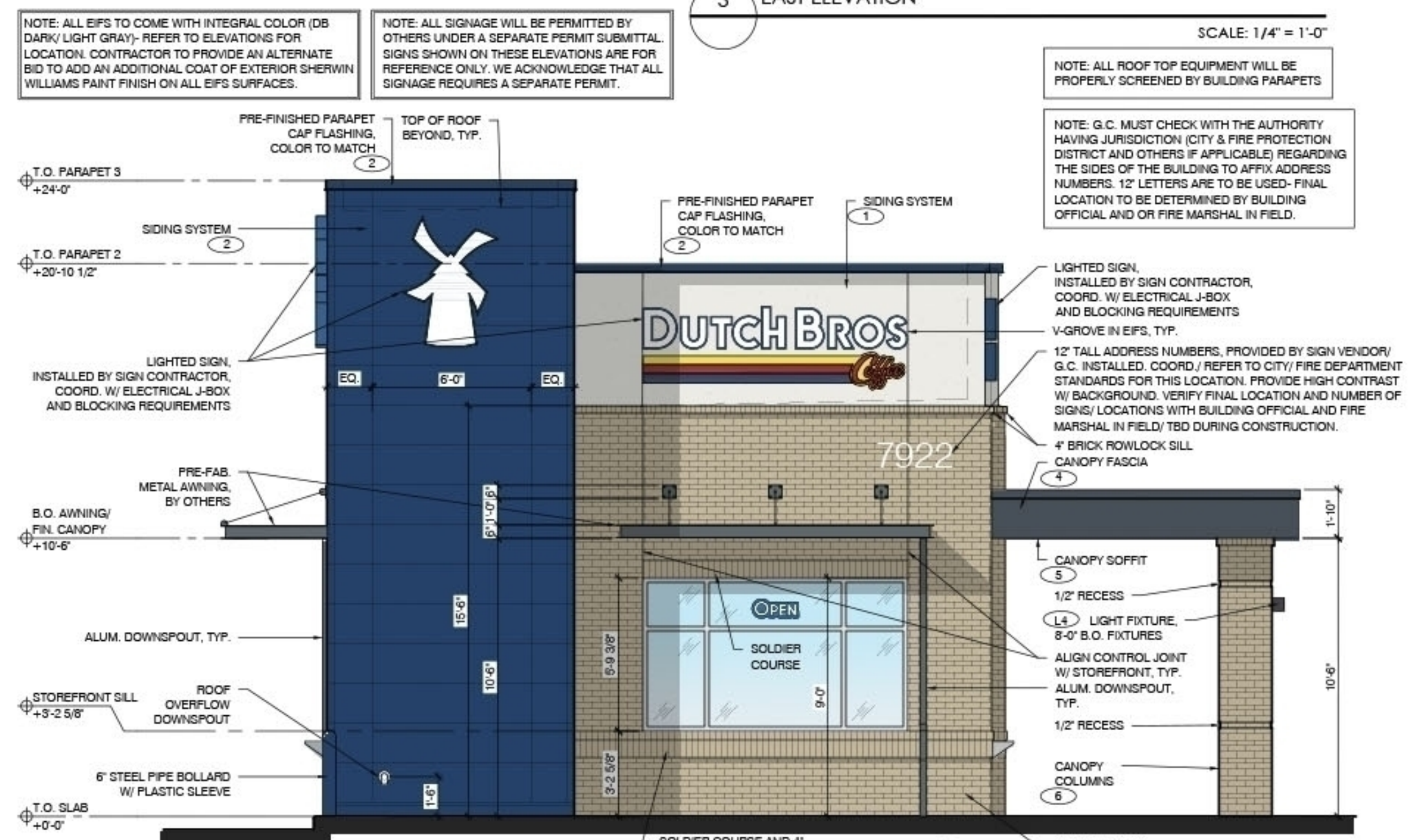
4 NORTH ELEVATION - DRIVE-THRU WINDOW SCALE: 1/4" = 1'-0"



3 EAST ELEVATION SCALE: 1/4" = 1'-0"



2 SOUTH ELEVATION - WALK-UP WINDOW SCALE: 1/4" = 1'-0"



1 WEST ELEVATION SCALE: 1/4" = 1'-0"

Project No:
Dutch Bros Coffee
New Freestanding Store
OLDHAM VILLAGE
LEE'S SUMMIT, MISSOURI
for: Dutch Bros Coffee
110 SW 4th St., Grants Pass, OR 97526

ISSUED FOR PERMIT

REV.	DATE	DESCRIPTION

SHEET NAME:
BUILDING ELEVATIONS

SHEET NUMBER:

A6.1

*The name DUTCH BROS. and all associated logos, distinctive designs, content, information, and other materials featured, displayed, contained herein, and made available by Dutch Bros., including but not limited to, the "look and feel" of the establishments and products, all text, images, colors, configurations, graphics, designs, illustrations, photographs, and pictures (collectively, the "Materials") are owned by and/or licensed by DB Franchising USA, LLC and are protected by copyright, trademark, trade dress, patent, and/or other intellectual property rights and/or other laws.