



EXTRASPACE STORAGE  
700 SE OLDHAM COURT  
LEE'S SUMMIT, MISSOURI

# EXTRASPACE STORAGE

700 SE OLDHAM COURT  
LEE'S SUMMIT, MISSOURI

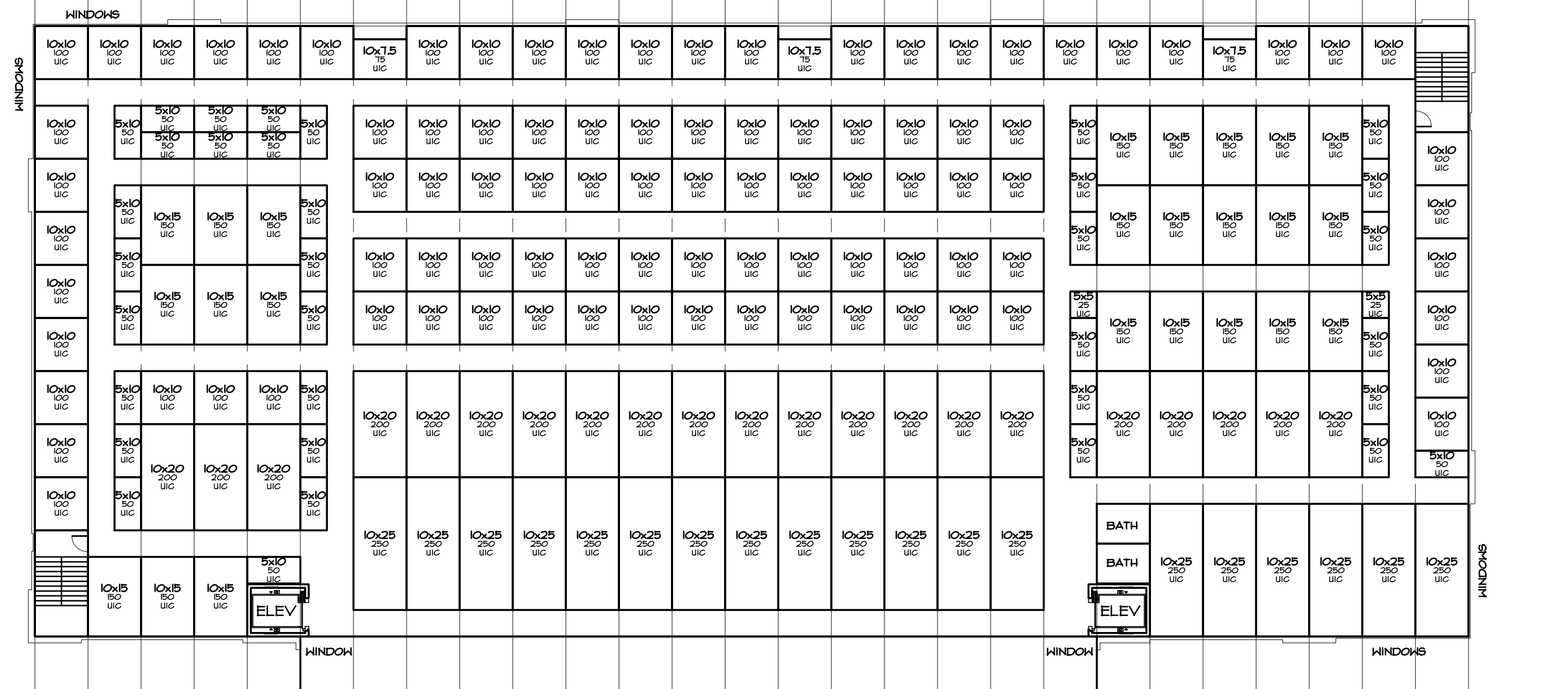
Hernly  
ASSOCIATES

1100 Rhode Island Street  
Lawrence, Kansas  
66044  
785 - 749 - 5806  
FAX 785 - 749 - 1515

UNIT MIX PLAN

Date: 2011/01/29  
Drawn by: SCH  
Checked by:  
Revisions:

COV

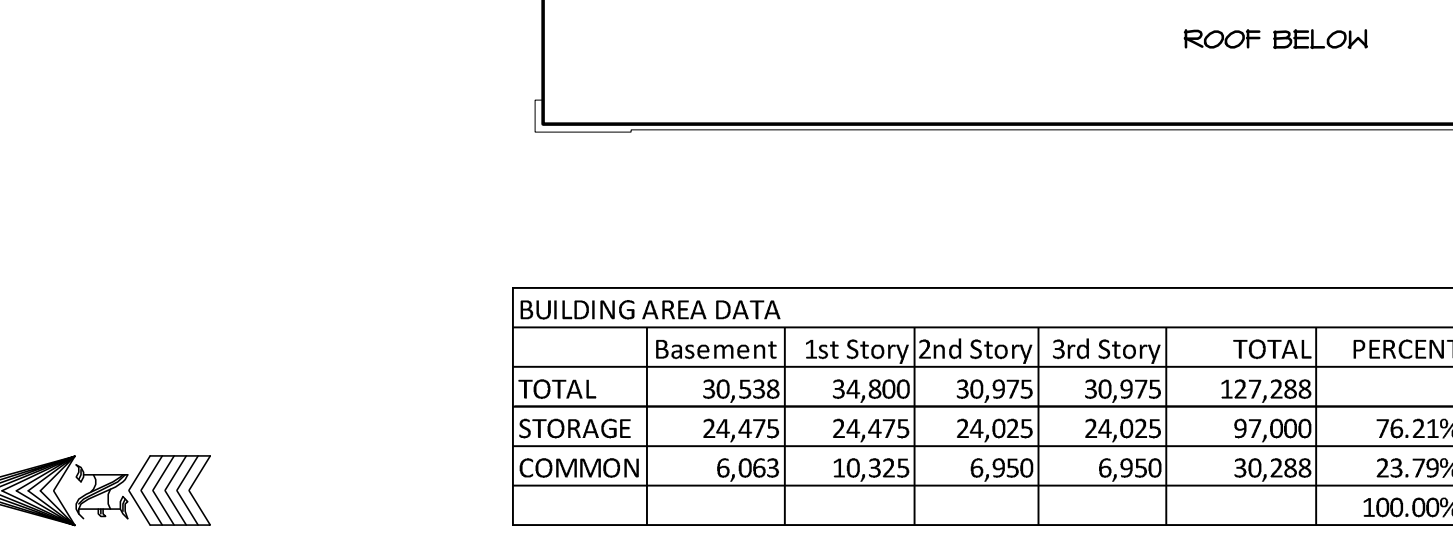


**BUILDING AREA DATA**

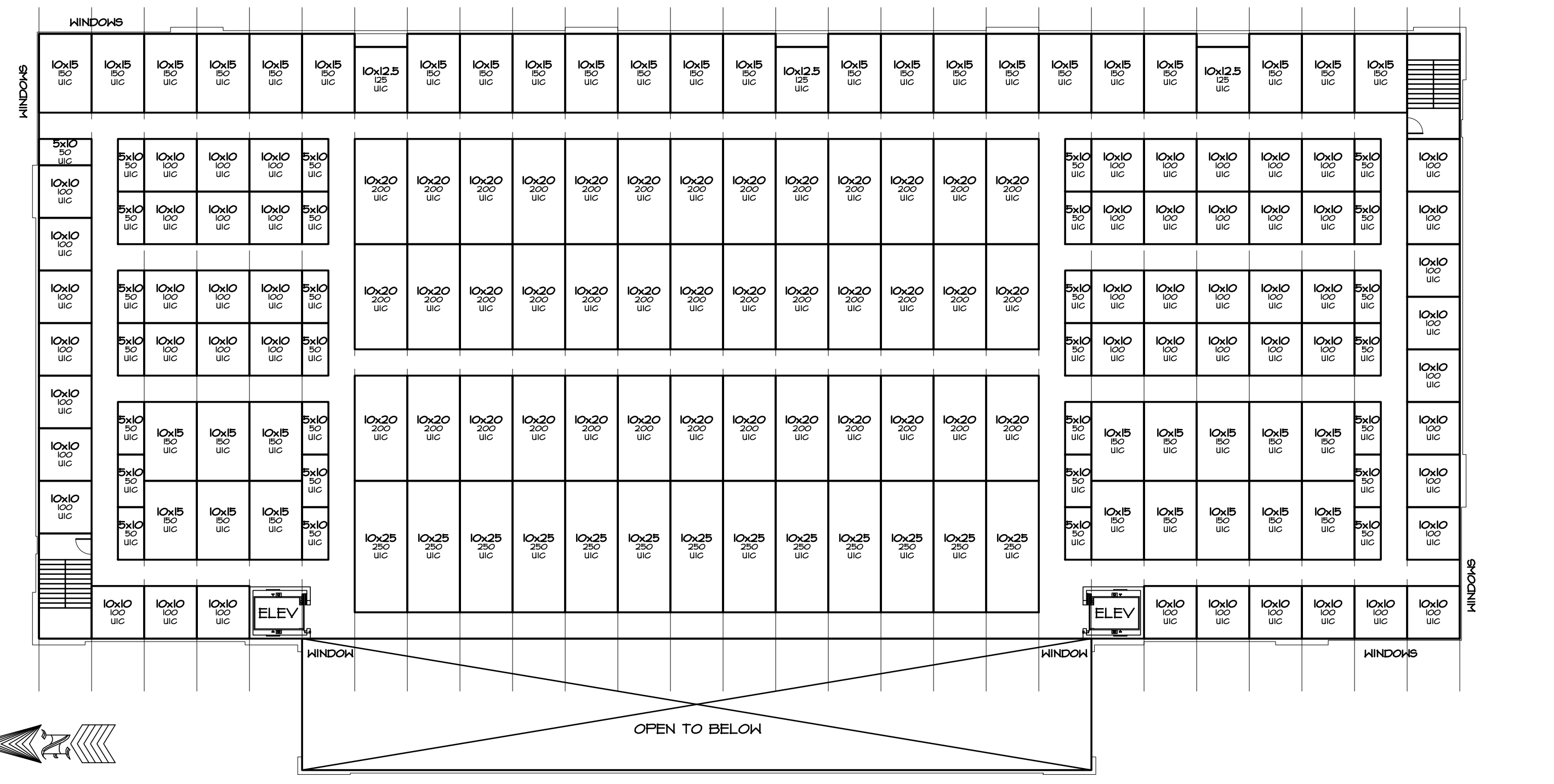
	Basement	1st Story	2nd Story	3rd Story	TOTAL	PERCENT
TOTAL	30,538	34,800	30,975	30,975	127,288	
STORAGE	24,475	24,475	24,025	24,025	97,000	76.21%
COMMON	6,063	10,325	6,950	6,950	30,288	23.79%
						100.00%

**UNIT MIX SCHEDULE**

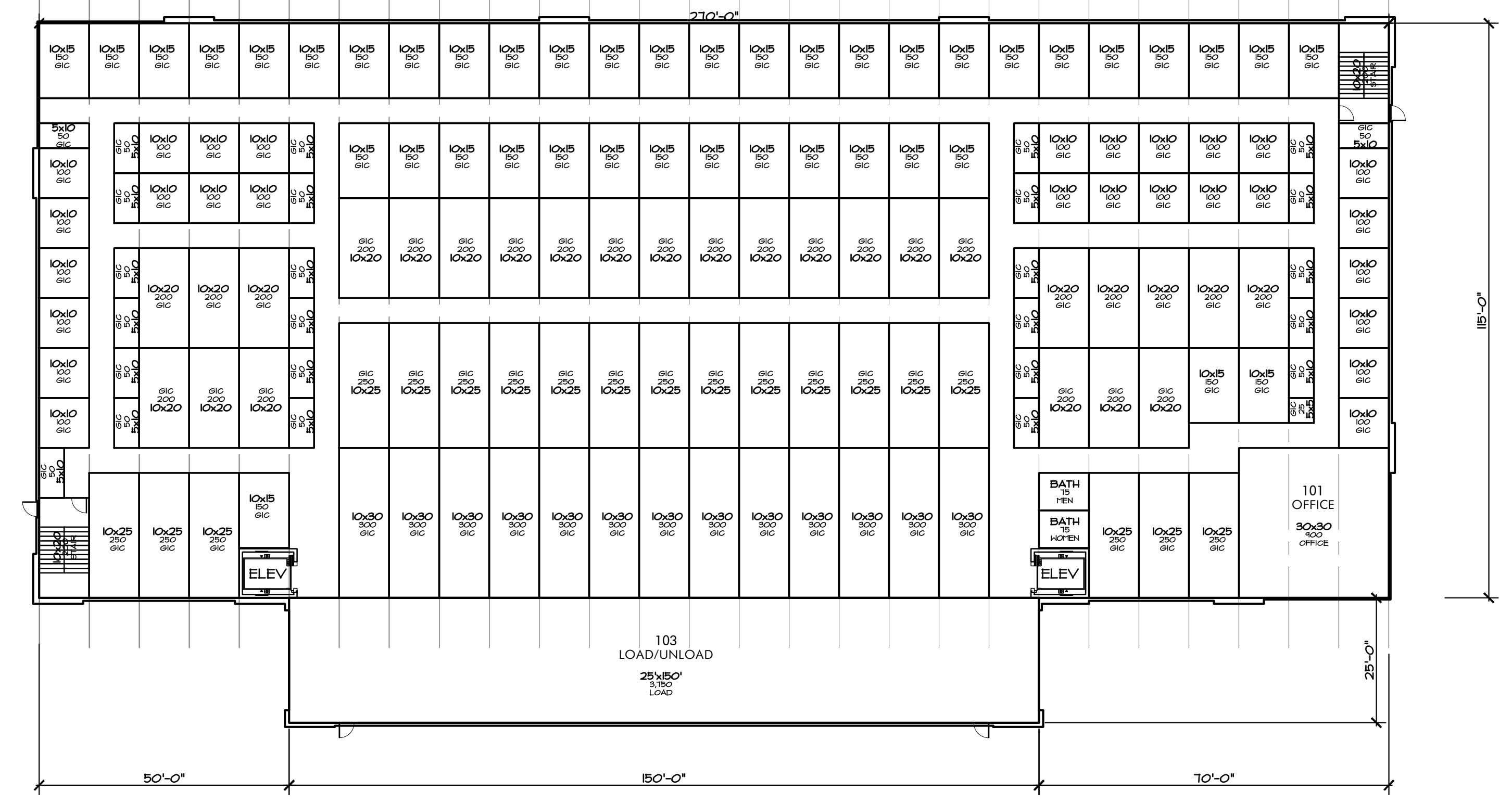
Unit Count	Unit Size	Unit Area	Unit Type	Total Area	Ground Inside Climate	Lower Story Climate	Upper Story Climate	PERCENT TOTAL
1	'5x5'	25 'GIC'		25	25			0.03%
26	'5x10'	50 'GIC'		1,300	1300			1.34%
28	'10x10'	100 'GIC'		2,800	2800			2.89%
42	'10x15'	150 'GIC'		6,300	6300			6.49%
27	'10x20'	200 'GIC'		5,400	5400			5.57%
19	'10x25'	250 'GIC'		4,750	4750			4.90%
13	'10x30'	300 'GIC'		3,900	3900			4.02%
3	'5x5'	25 'LIC'		75				0.08%
24	'5x10'	50 'LIC'		1,200		1200		1.24%
11	'10x10'	100 'LIC'		1,100		1100		1.13%
48	'10x15'	150 'LIC'		7,200		7200		7.42%
42	'10x20'	200 'LIC'		8,400		8400		8.66%
26	'10x25'	250 'LIC'		6,500		6500		6.70%
2	'5x5'	25 'UIC'		50			50	0.05%
63	'5x10'	50 'UIC'		3,150			3,150	3.25%
3	10x7.5'	75 'UIC'		225			225	0.23%
148	'10x10'	100 'UIC'		14,800			14,800	15.26%
3	10x12.5'	125 'UIC'		375			375	0.39%
63	'10x15'	150 'UIC'		9,450			9,450	9.74%
60	'10x20'	200 'UIC'		12,000			12,000	12.37%
32	'10x25'	250 'UIC'		8,000			8,000	8.25%
684		142		97,000	24,475	24,475	48,050	100%
				76.21%	25.23%	25.23%	49.54%	100.00%



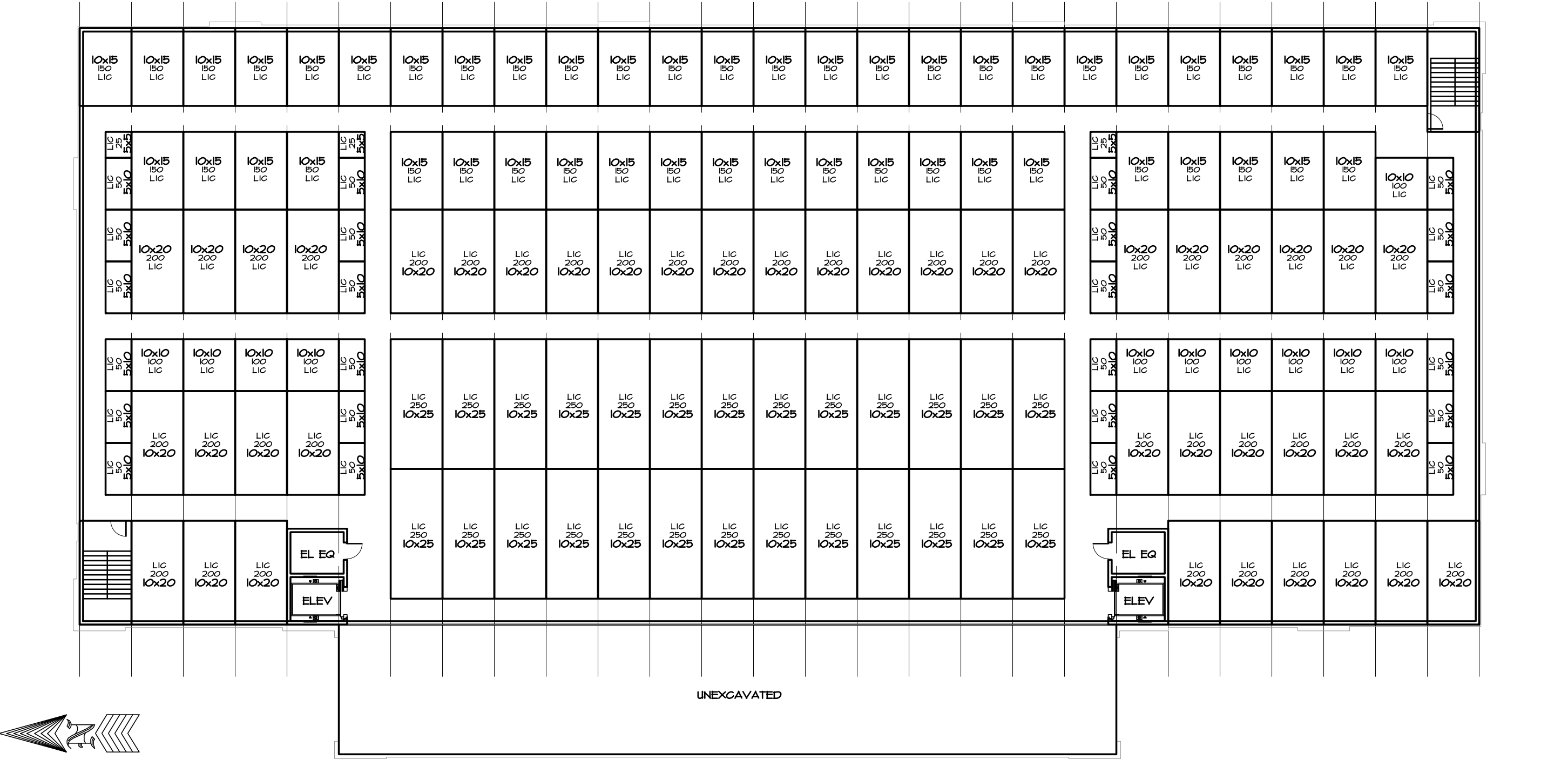
**4 THIRD STORY LAYOUT PLAN - 30,975 S.F.**  
1" = 20'-0"



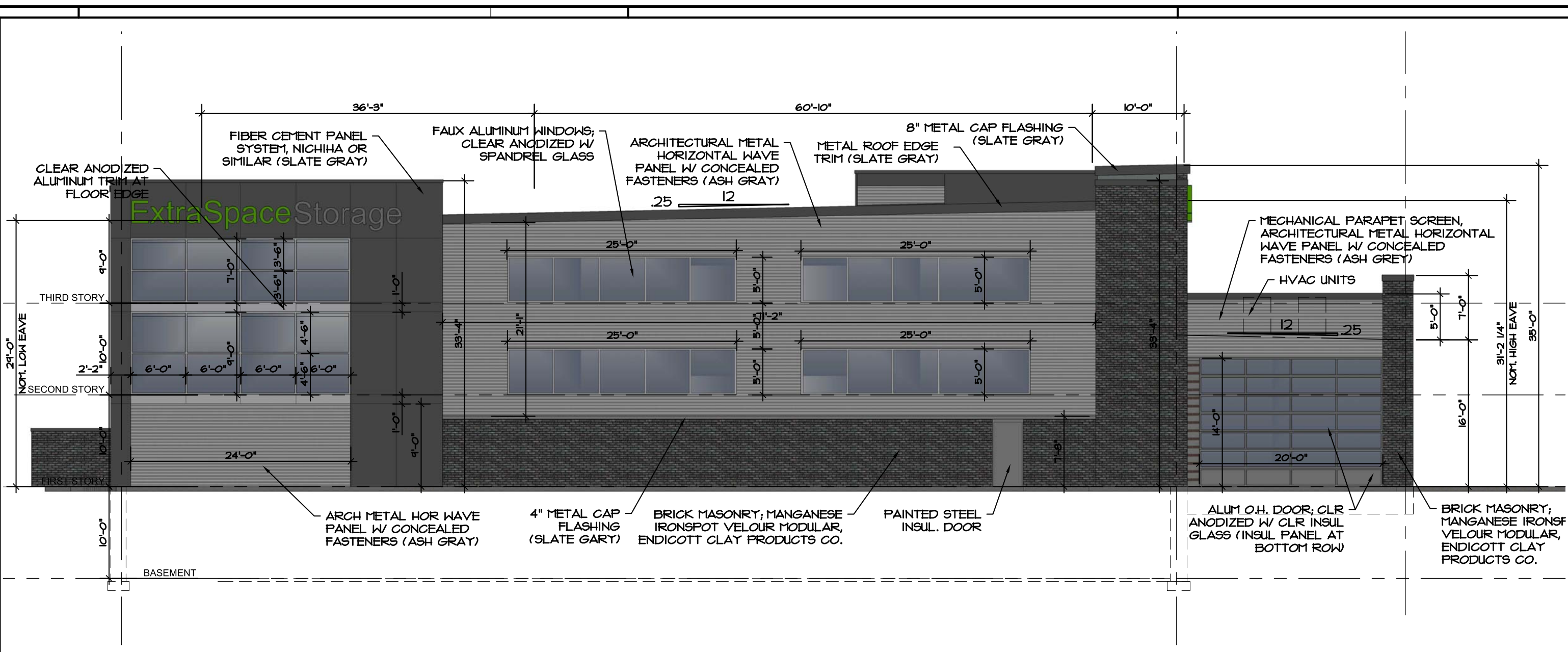
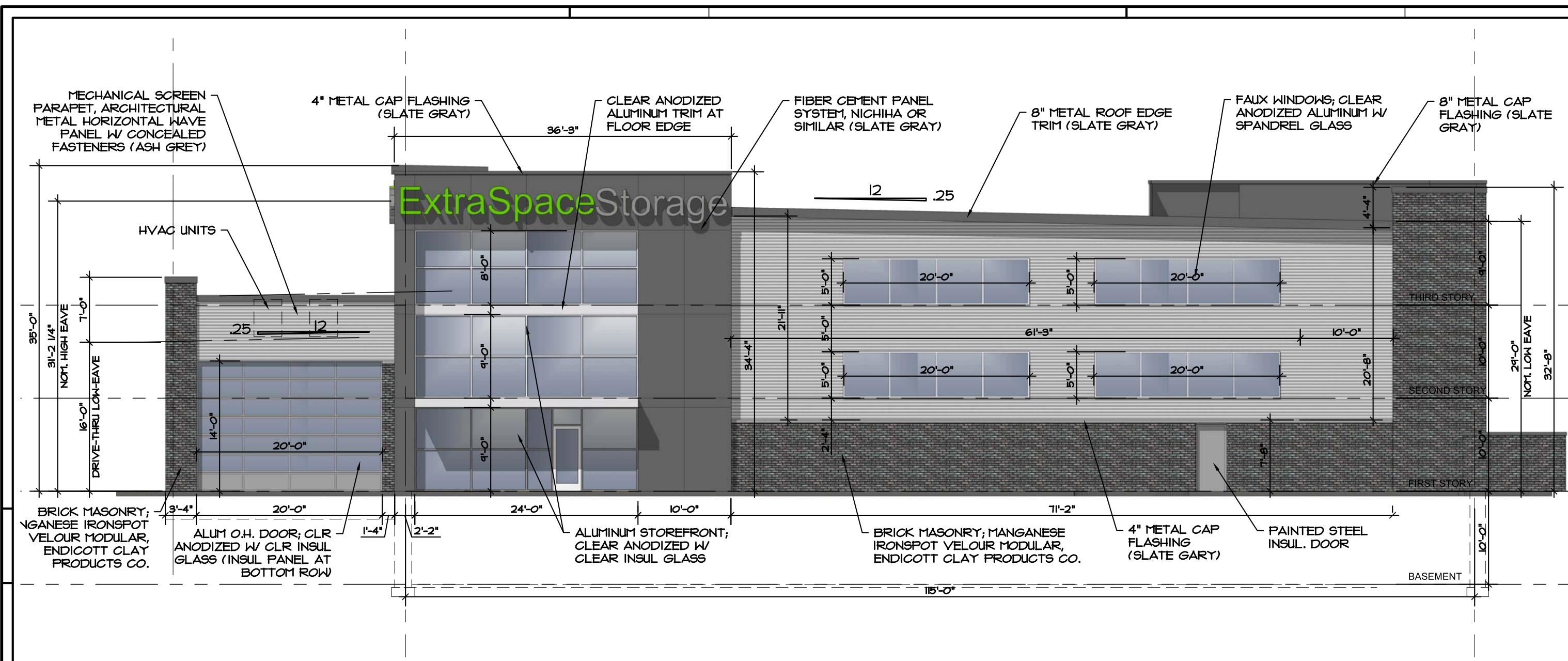
**3 SECOND STORY LAYOUT PLAN - 30,975 S.F.**  
1" = 20'-0"



**2 FIRST STORY LAYOUT PLAN - 34,800 S.F.**  
1" = 20'-0"

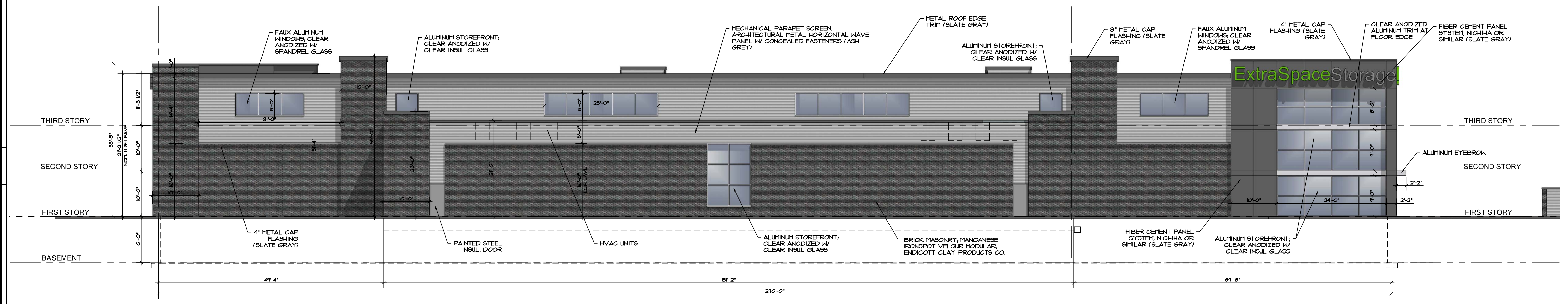


**1 BASEMENT LAYOUT PLAN - 30,538 S.F.**  
1" = 20'-0"

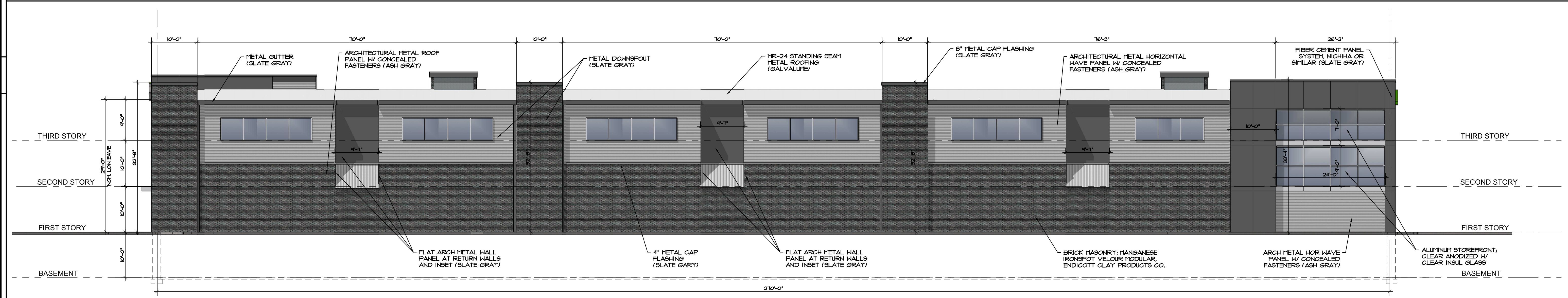


**1 SOUTH ELEVATION**  
3/32" = 1'-0"

**2 NORTH ELEVATION**  
3/32" = 1'-0"



**3 WEST ELEVATION**  
3/32" = 1'-0"



**4 EAST ELEVATION**  
3/32" = 1'-0"

**EXTRASPACE STORAGE**  
700 SE OLDHAM COURT  
LEE'S SUMMIT, MISSOURI

**Hernly ASSOCIATES**

1100 Rhode Island Street  
Lawrence, Kansas 66044  
785 - 749 - 5806  
FAX 785 - 749 - 1515

ELEVATIONS

Date: 2019/01/17  
Drawn by: SCH  
Checked by:  
Revisions:

**A2.0**



**1** SOUTH ELEVATION WITH PROPOSED TREES AND EXISTING ADJACENT HOTEL PROFILE  
3/32" = 1'-0"



**2** WEST ELEVATION WITH PROPOSED TREES AND EXISTING ADJACENT HOTEL PROFILE  
1/16" = 1'-0"



**3** EAST ELEVATION WITH PROPOSED TREES AND EXISTING ADJACENT HOTEL PROFILE  
1/16" = 1'-0"

EXTRASPACE STORAGE  
700 SE OLDHAM COURT  
LEE'S SUMMIT, MISSOURI

Hernly  
ASSOCIATES

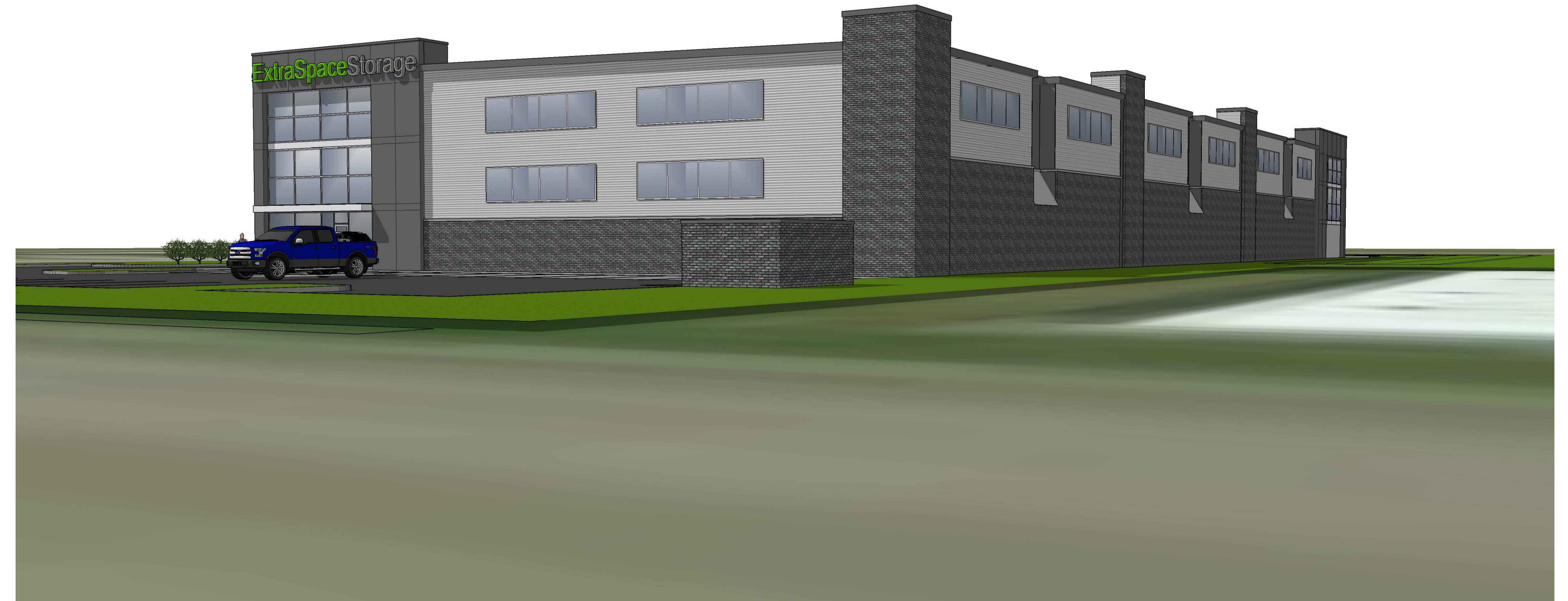
1100 Rhode Island Street  
Lawrence, Kansas  
66044  
785 - 749 - 5806  
FAX 785 - 749 - 1515

ELEVATIONS

Date: 2019/01/17  
Drawn by: SCH  
Checked by:  
Revisions:



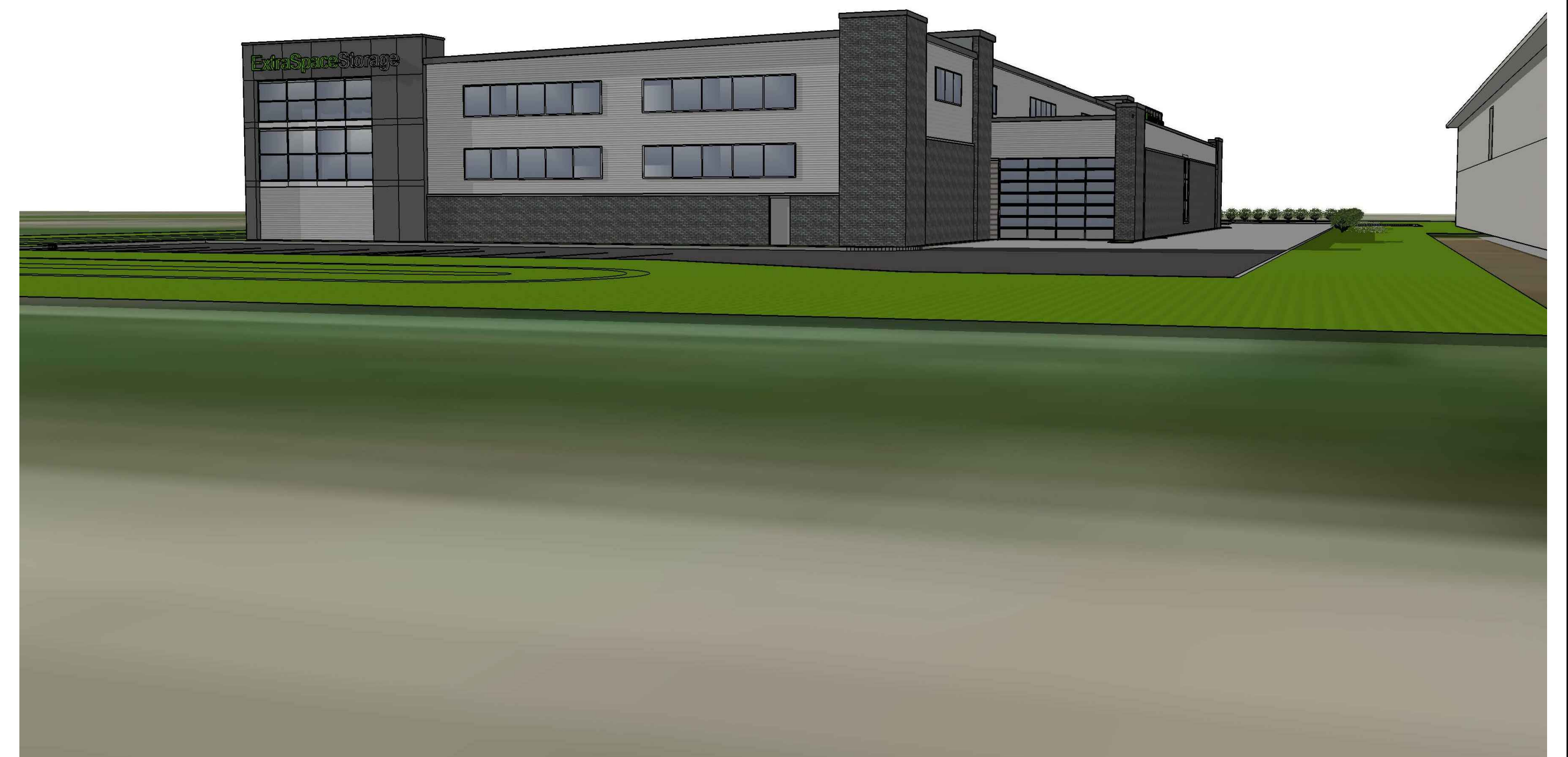
**1** SOUTHWEST PERSPECTIVE  
NTS



**2** SOUTHEAST PERSPECTIVE  
NTS

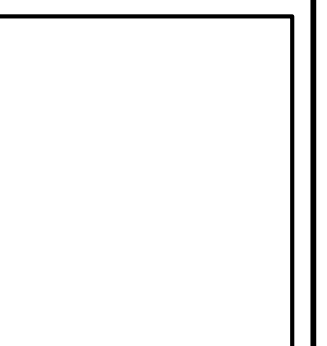


**3** NORTHEAST PERSPECTIVE  
NTS



**4** NORTHWEST PERSPECTIVE  
NTS

**EXTRASPACE STORAGE**  
700 SE OLDHAM COURT  
LEE'S SUMMIT, MISSOURI



**Hernly  
ASSOCIATES**

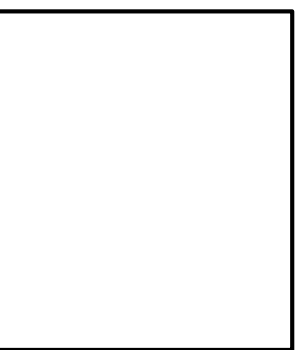
1100 Rhode Island Street  
Lawrence, Kansas  
66044  
785 - 749 - 5806  
FAX 785 - 749 - 1515

ELEVATIONS

Date: 2/21/17  
Drawn by: SCH  
Checked by:  
Revisions:



**EXTRASPACE STORAGE**  
700 SE OLDHAM COURT  
LEE'S SUMMIT, MISSOURI



**Hernly  
ASSOCIATES**

1100 Rhode Island Street  
Lawrence, Kansas  
66044  
785 - 749 - 5806  
FAX 785 - 749 - 1515

ELEVATIONS

Date: 2011/01/29  
Drawn by: SCH  
Checked by:  
Revisions:



**1** VIEW FROM NORTHWEST  
NTS

EXTRASPACE STORAGE  
700 SE OLDHAM COURT  
LEE'S SUMMIT, MISSOURI



**2** VIEW FROM WEST  
NTS



**3** VIEW NORTHEAST FROM HWY 50  
NTS

Hernly  
ASSOCIATES

1100 Rhode Island Street  
Lawrence, Kansas  
66044  
785 - 749 - 5806  
FAX 785 - 749 - 1515

ELEVATIONS

Date: 2019/01/29  
Drawn by: SCH  
Checked by:  
Revisions: