







3
ELEVATION
APARTMENT BUILDING
Scale: 1/16" = 1'-0"



2
ELEVATION
APARTMENT BUILDING
Scale: 1/16" = 1'-0"



1
ELEVATION
CLUBHOUSE
Scale: 1/8" = 1'-0"

MATERIAL LEGEND	
	BRICK LIGHT FINISH
	BRICK DARK FINISH
	FIBER CEMENT SIDING GRAY
	FIBER CEMENT SIDING WHITE
	FIBER CEMENT SIDING CHARCOAL

MATERIAL LEGEND



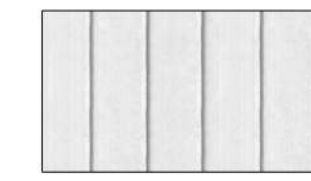
BRICK
LIGHT FINISH



BRICK
DARK FINISH



FIBER CEMENT SIDING
GRAY



FIBER CEMENT SIDING
WHITE



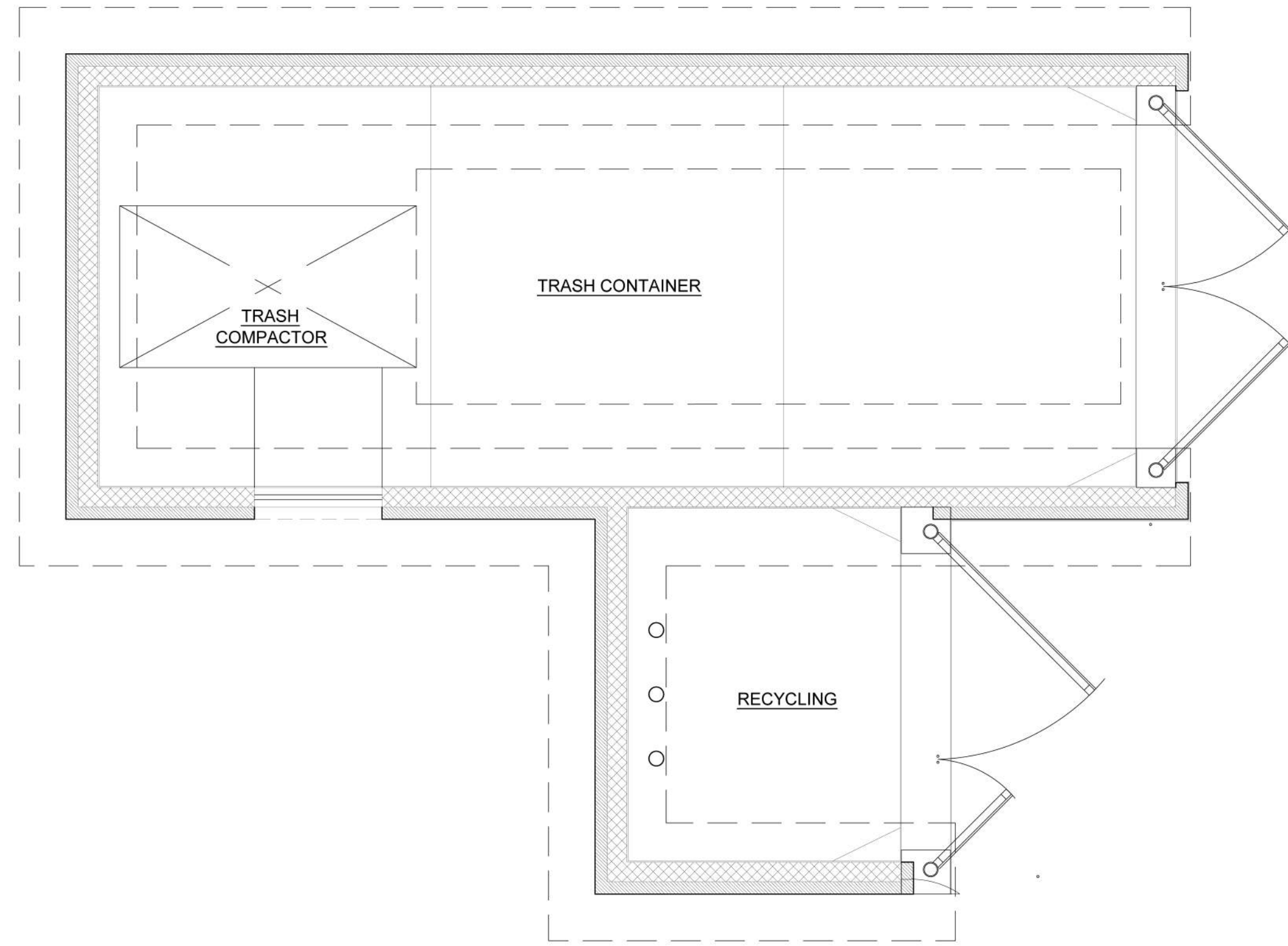
FIBER CEMENT SIDING
CHARCOAL



2
ELEVATION
APARTMENT BUILDING - SHORT BUILDING
Scale: 1/16" = 1'-0"




1
ELEVATION
APARTMENT BUILDING - LONG BUILDING
Scale: 1/16" = 1'-0"

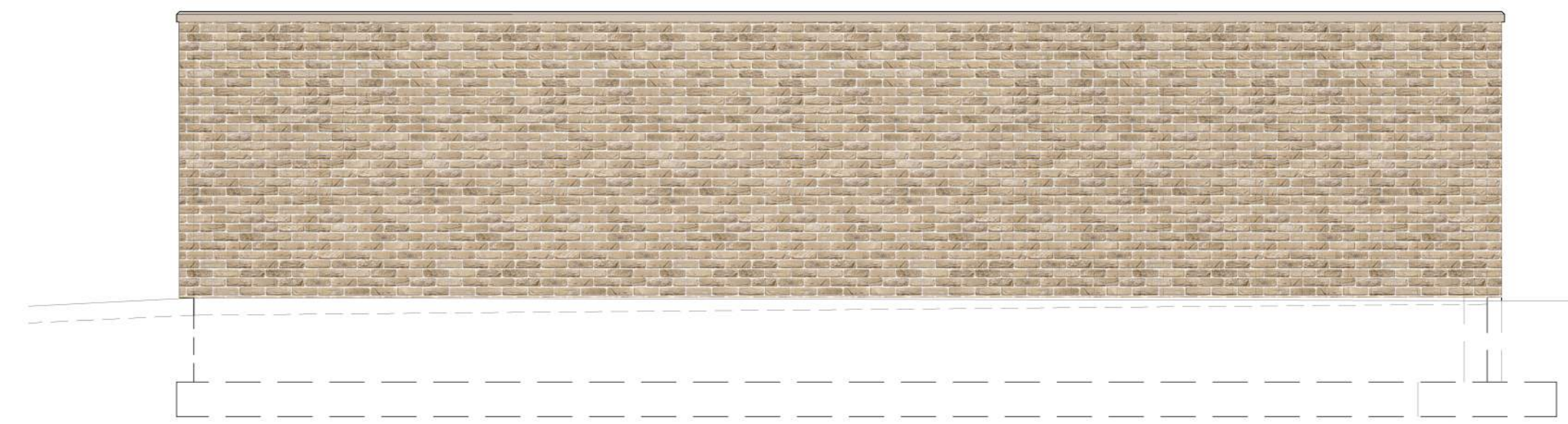


PLAN

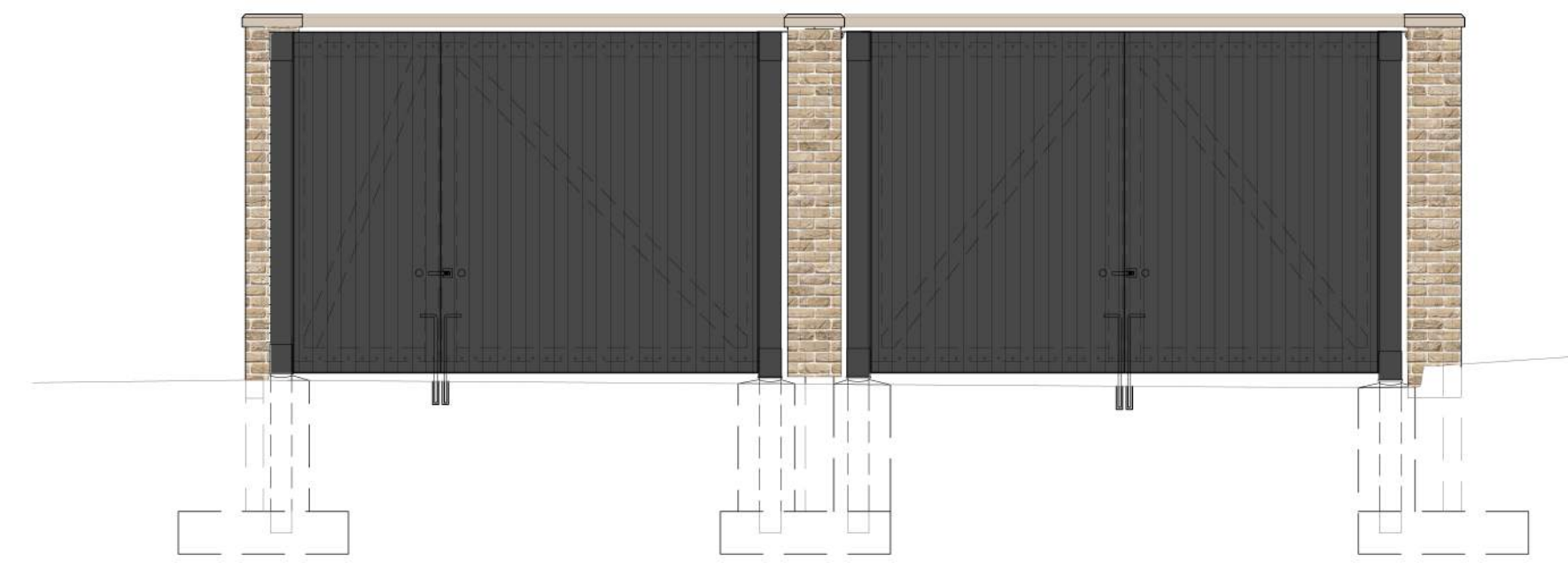
MATERIAL LEGEND

 BRICK LIGHT FINISH

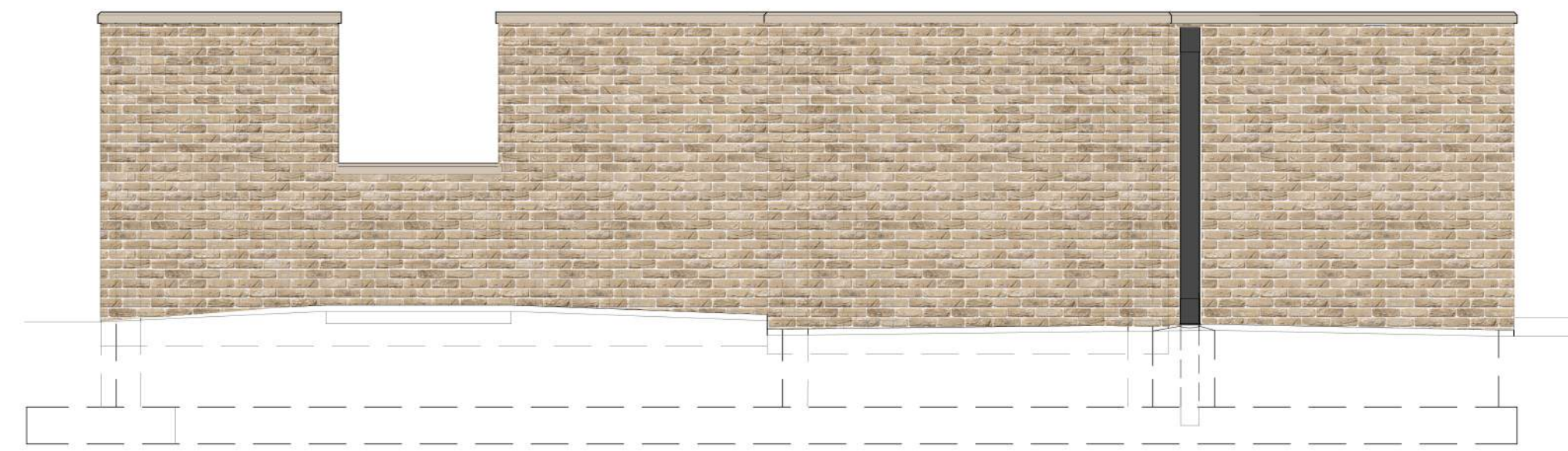
TRASH ENCLOSURE TO BE FACED WITH BRICK VENEER TO MATCH APARTMENTS. STRUCTURE TO BE CONCRETE BLOCK. CAST STONE CAP TO COVER ALL TOP OF WALL. CONDITIONS. GATES TO BE METAL STRUCTURE WITH STAINED WOOD OR RIBBED METAL FACING.



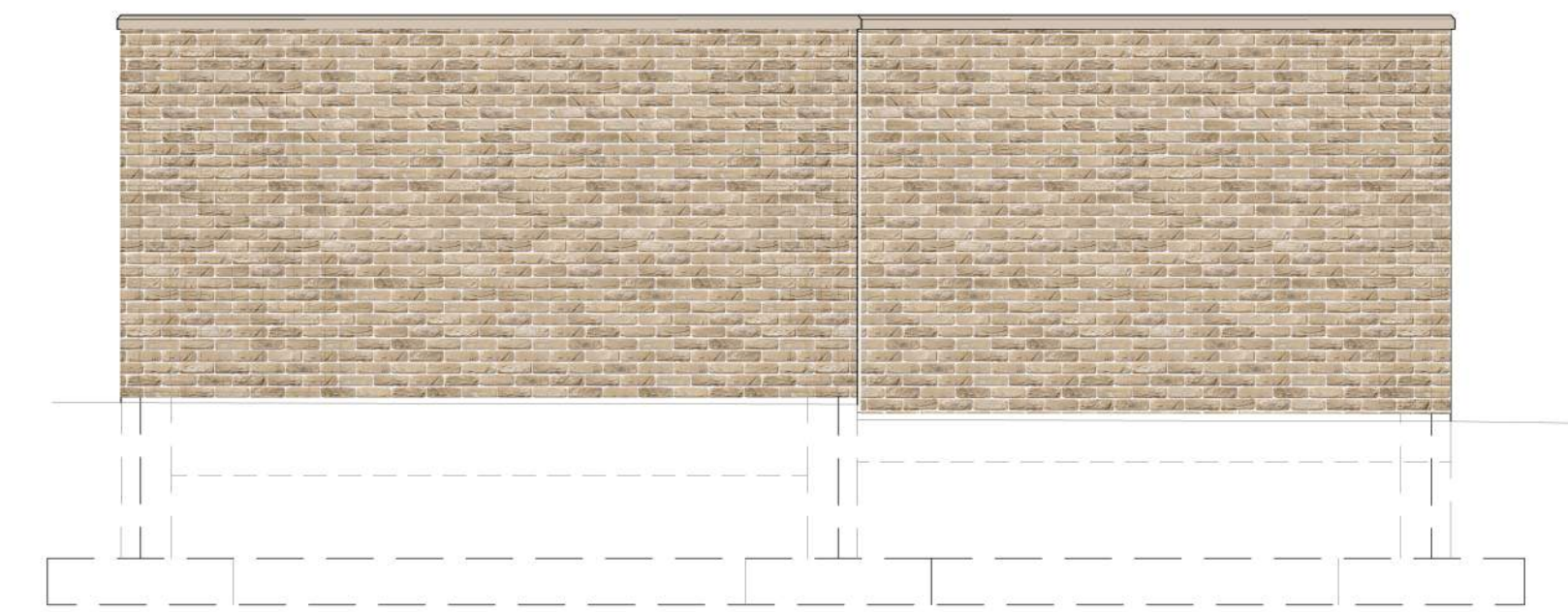
RIGHT SIDE ELEVATION



FRONT ELEVATION



LEFT SIDE ELEVATION



BACK ELEVATION

① TRASH COMPACTOR ENCLOSURE
1/4" = 1'-0"