



**LEE'S SUMMIT**  
MISSOURI®

**3222 SW Pryor Road**  
**Rezoning From AG to R-1**  
**PL2025-242**

# Project Request

The applicant is requesting to rezone a section of the 3222 SW Pryor Road property (2.89 acres) from AG to R-1.

No changes to the existing dwellings or site alterations are proposed.





## Area/Zoning Map

3222 SW Pryor Rd  
(zoned AG)

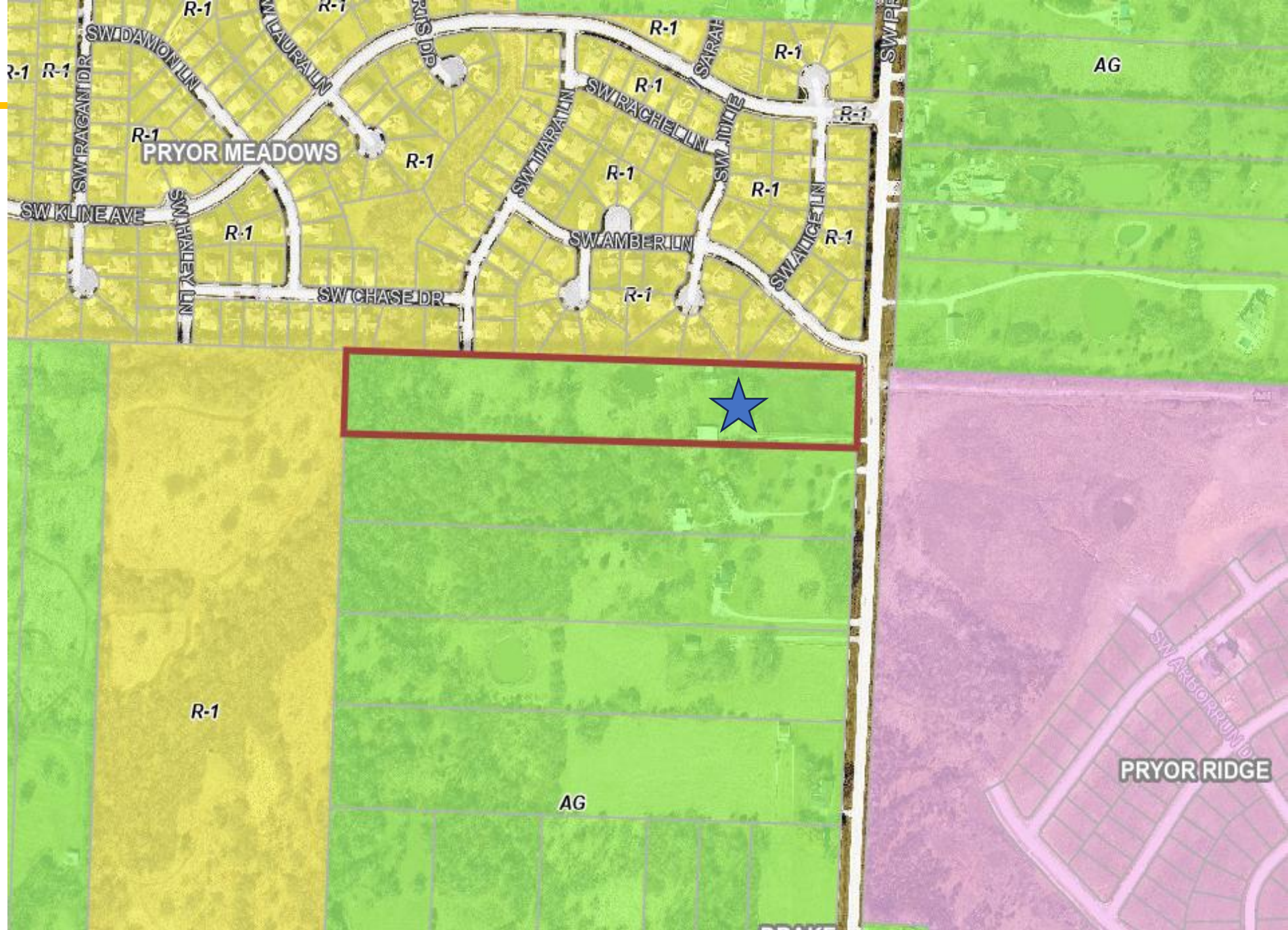
Adjacent Zoning:

North – R-1

South – AG

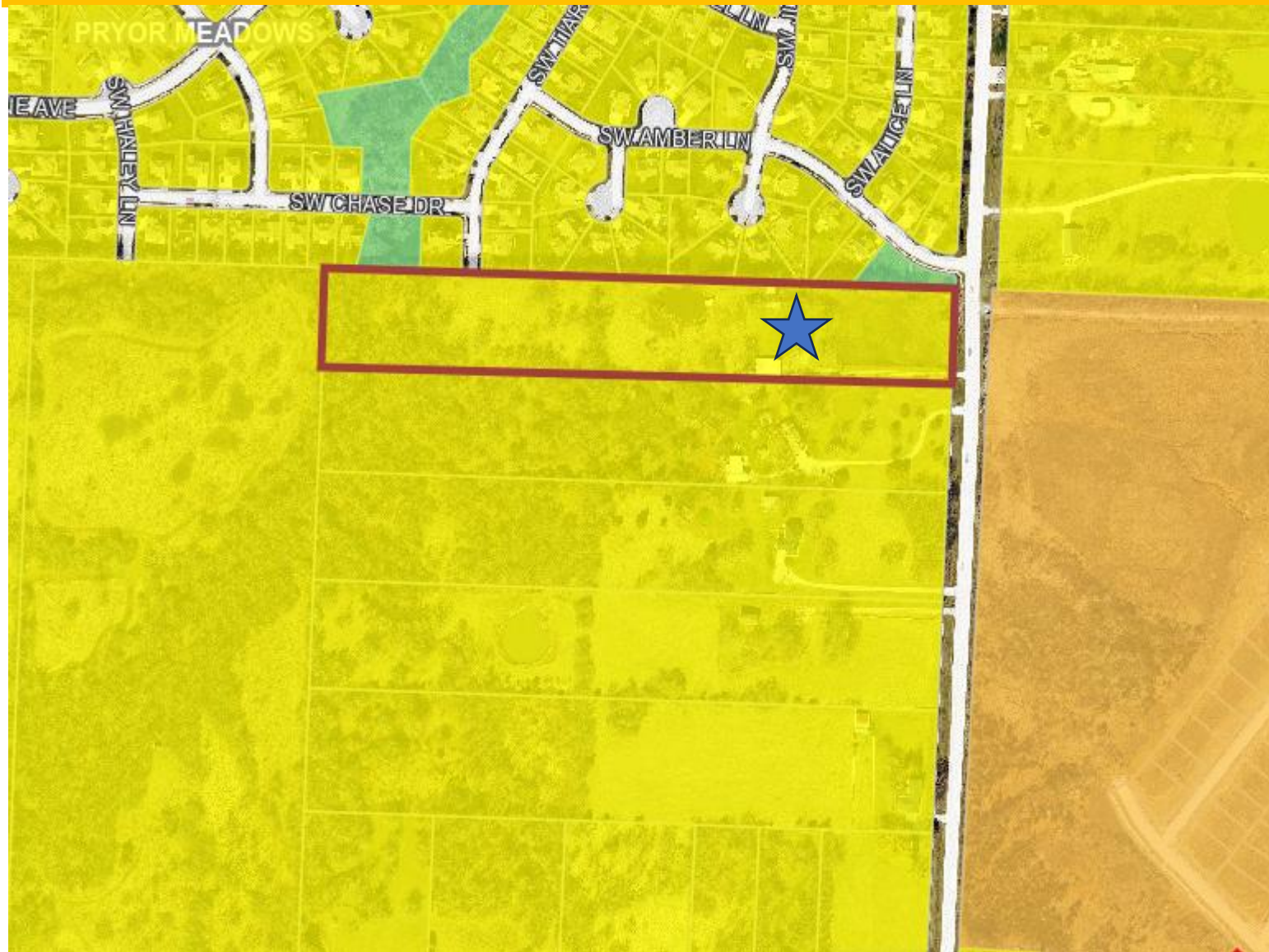
East – AG/ PMIX





West – R-1





# Ignite! Land Use Map



-  Parks/Open Space
-  Residential 1 (Lower Intensity)
-  Residential 2 (Medium Intensity)
-  Residential 3 (High Intensity)

## Neighborhood Meeting

---

The applicants hosted a neighborhood meeting on October 9, 2025.

Topics Discussed:  
Rezone Process

Staff has not received any comments, emails, or phone calls in favor or in opposition to the project.

## Approval Condition

---

1. The rezoning from AG to R-1 shall not take effect until a plat has been submitted, approved and recorded in accordance with all UDO requirements





**LEE'S SUMMIT**

**MISSOURI®**

**3222 SW Pryor Road**

**Rezoning From AG to R-1**

**PL2025-242**