

Exhibit "B"

Transportation Development District (TDD) Right-of-Way

SE 1/4 SEC 4,
T 47 N, R 32 W

SW 1/4 SEC 3,
T 47 N, R 32 W

UN-PLATTED
Longview Road

UN-PLATTED
View High Drive

UN-PLATTED
SPECIAL RIGHTS
LOT 1

UN-PLATTED

UN-PLATTED

UN-PLATTED

UN-PLATTED

UN-PLATTED

3rd Street

TDD Tract "A" Description
See Page 1 & 2, Exhibit "A"

Proposed
Boulevard

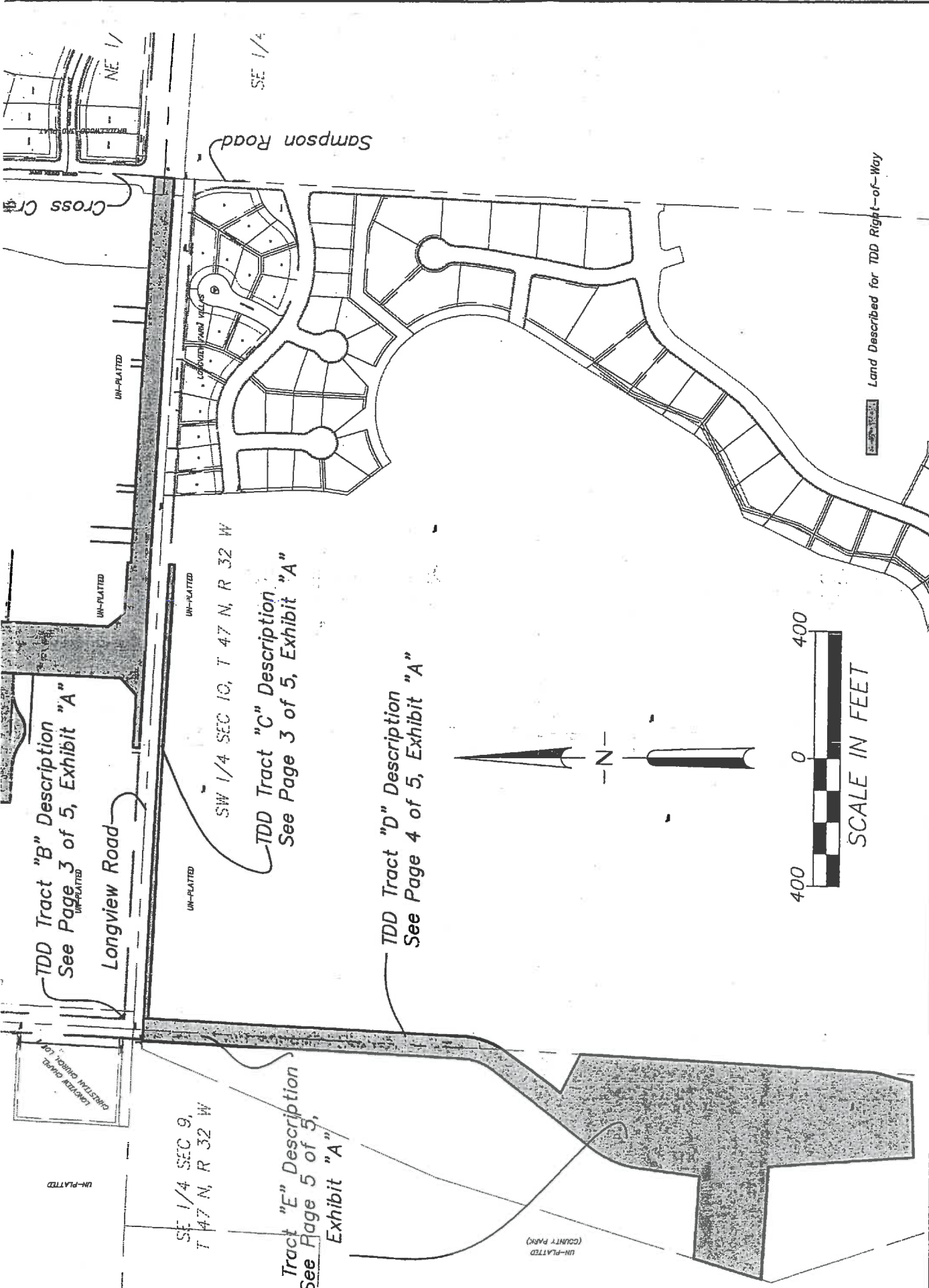
UN-PLATTED
Longview Road
NE 1/4 SEC 9, T 47 N, R 32 W

UN-PLATTED
SW 1/4 SEC 10, T 47 N, R 32 W

TDD Tract "A" Description
See Pages 1 & 2, Exhibit "A"

UN-PLATTED
K Drive





Land Described for TDD Right-of-Way

Issue:	Notes:	Drawn:	Checked:	Approved:
12/23/2003	Revised Tracts E, F, and G	RLU	KEL	KEL
3/05/2003	Revised All Tracts	RLU	KEL	KEL
3/27/2003	Revised Tract C	RLU	KEL	KEL
1/07/2003	Revised Tracts C, D, and G	RLU	KEL	KEL
1/28/2003	Revised Tract G	RLU	KEL	KEL
2/05/2003	Correct Tract G	RLU	KEL	KEL
2/12/2003	Revised Tract C	RLU	KEL	KEL

7401 West 125th Street, Suite 110
 Overland Park, Kansas 66213
 Phone: 913-239-1100
 Toll Free: 877-527-5488
 Fax: 913-239-1111
 www.offinis.us

Affinis
 ccyp
 ENGINEERS • PLANNERS • CONSULTANTS

Gale Communities
 New Longview Development
 TDD Right-of-Way
 Exhibit "B"

Building long-lasting relationships
 Job # LC02-1211