

Residences
at Echelon

Walmart Parking Lot

SW Hollywood Dr

Summit
Crest
Plaza

Firestone

Aldersgate
United
Methodist

Proposed
Coy Boy
Carwash

QuickTrip

SW Summitcrest Dr

Arby's

SW Market St

Route 291

MO 150

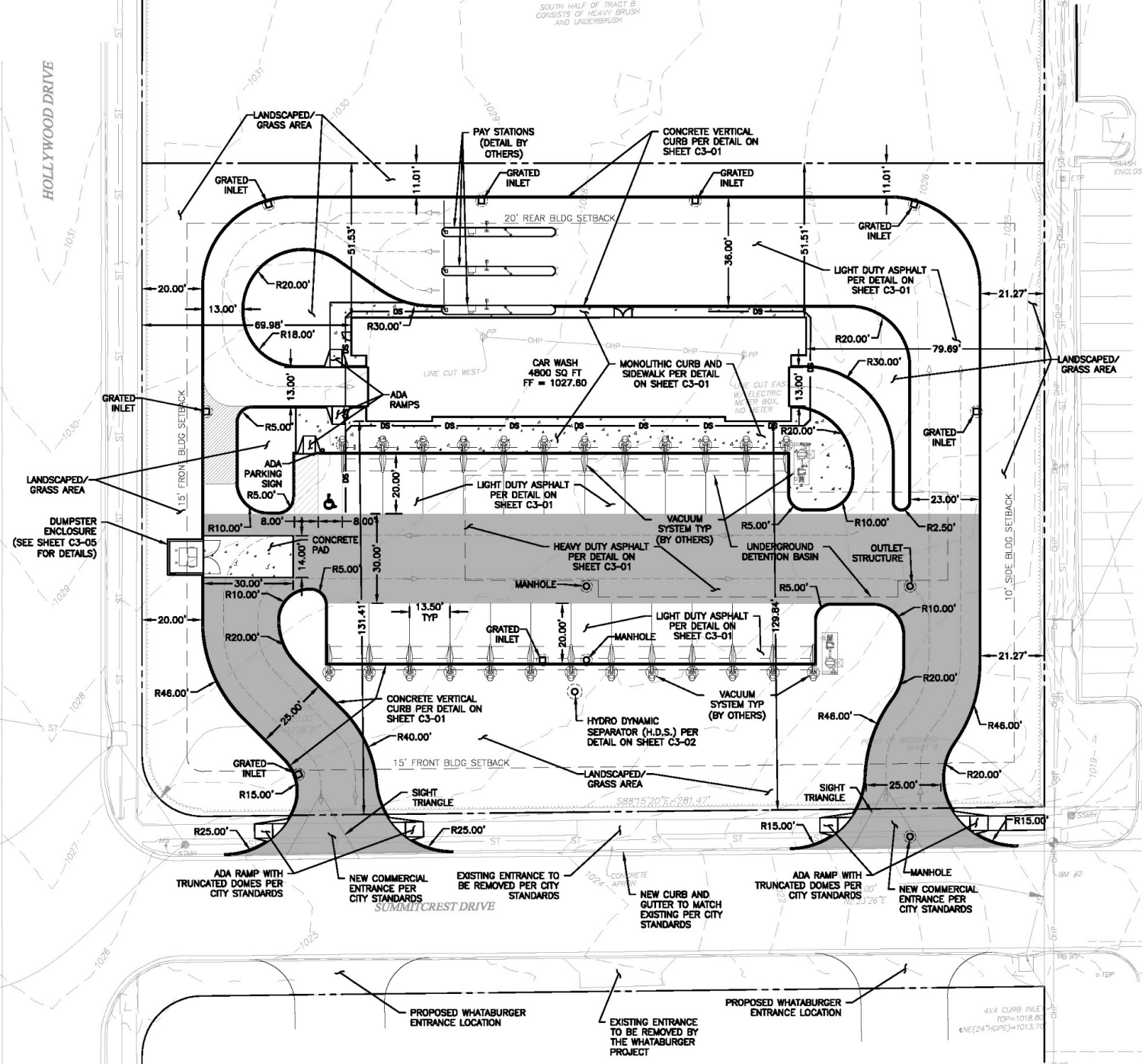


N/F
ALDERGATE METHODIST CHURCH
PARCEL # 70-500-03-14-00-00-000
ZONED PMX

4x4 CURB INLET
TOP=1028.13'
E(18"HOPE)=1024.13'

4x4 CURB INLET
TOP=1027.88'
E(18"HOPE)=1022.29'
E(18"HOPE)=1022.34'
E(18"HOPE)=1022.23'

4x4 JUNCTION BOX
TOP=1028.98'
E(18"HOPE)=1021.06'
E(18"HOPE)=1020.96'



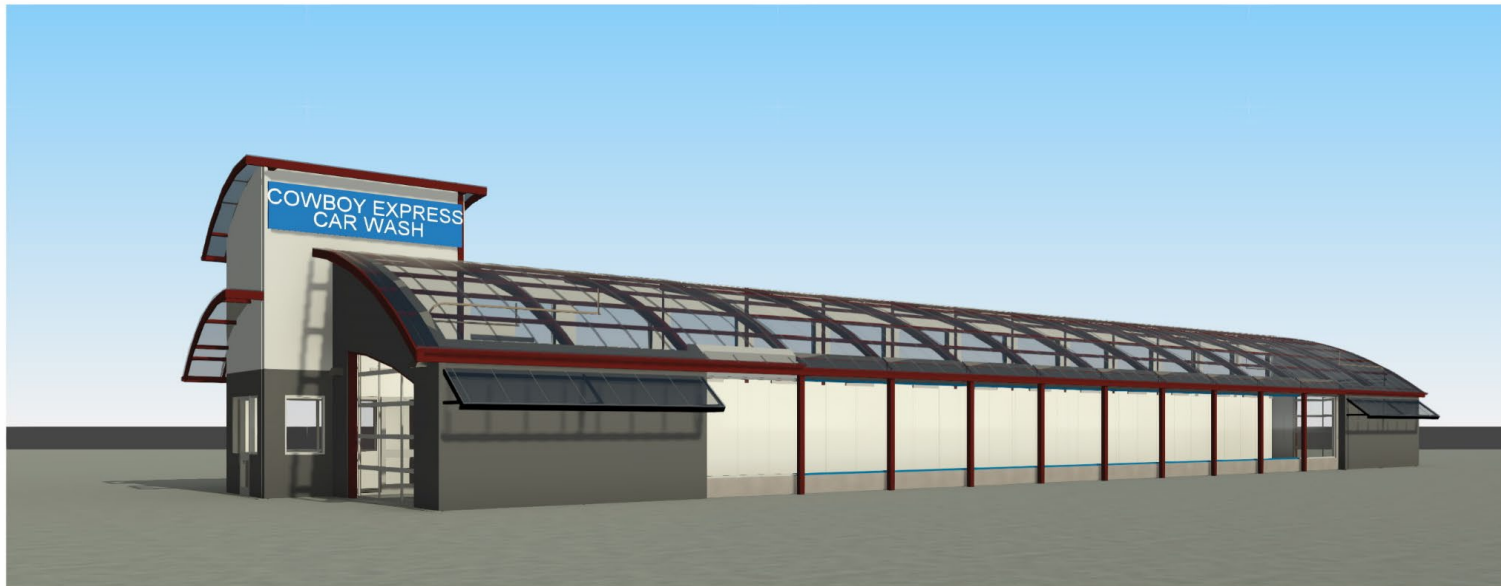
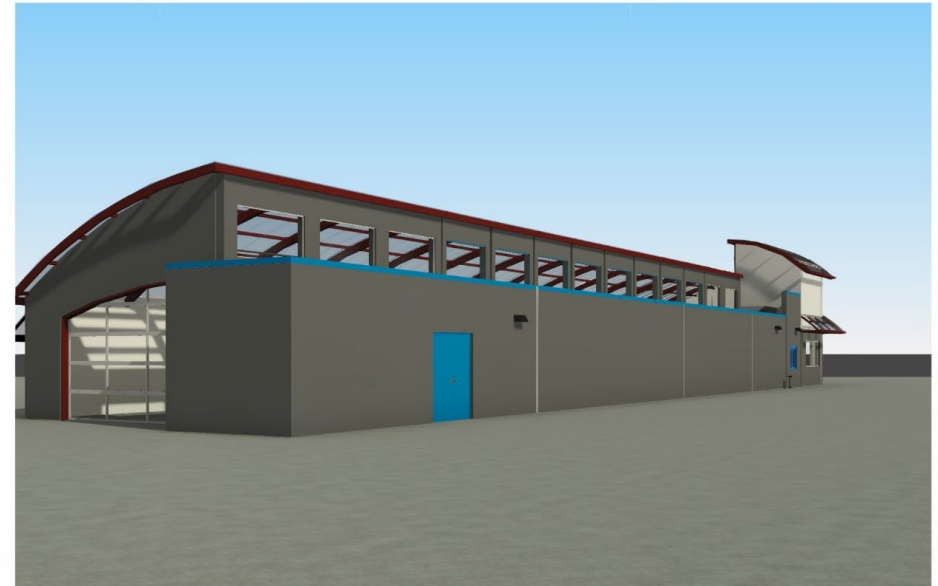
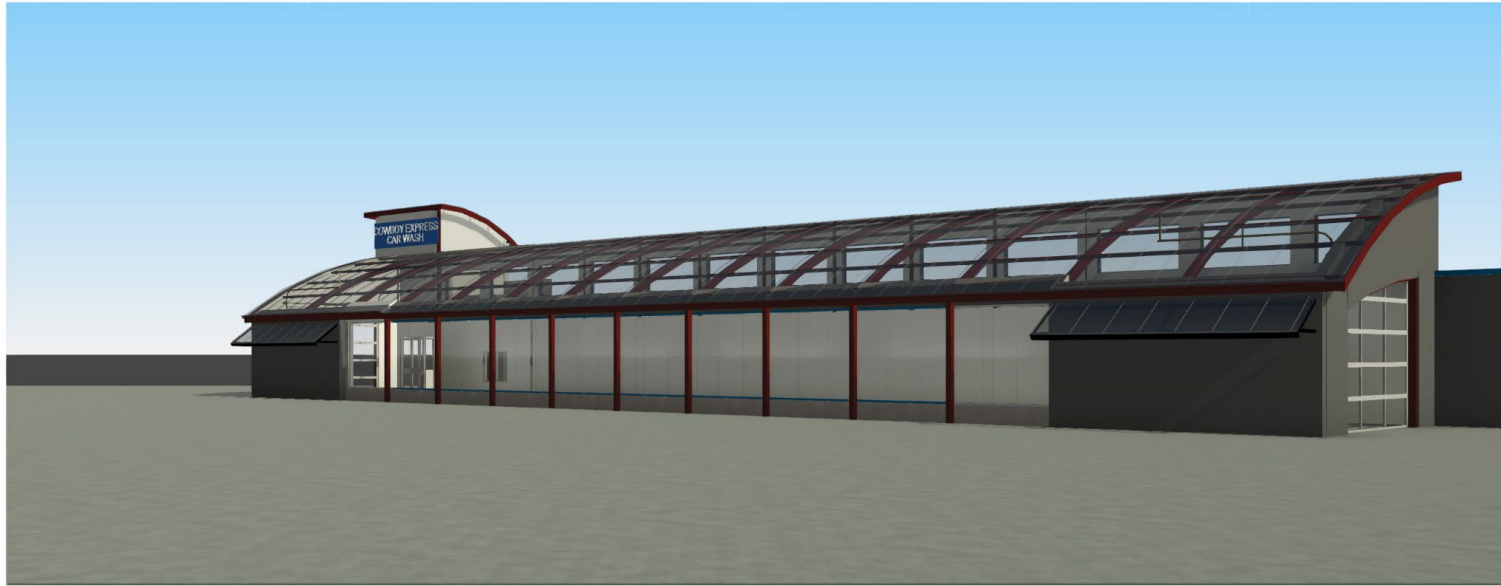
N/F
SUMMIT CREST PLAZA LLC
PARCEL # 70-500-03-14-00-00-000
ZONED CP-2

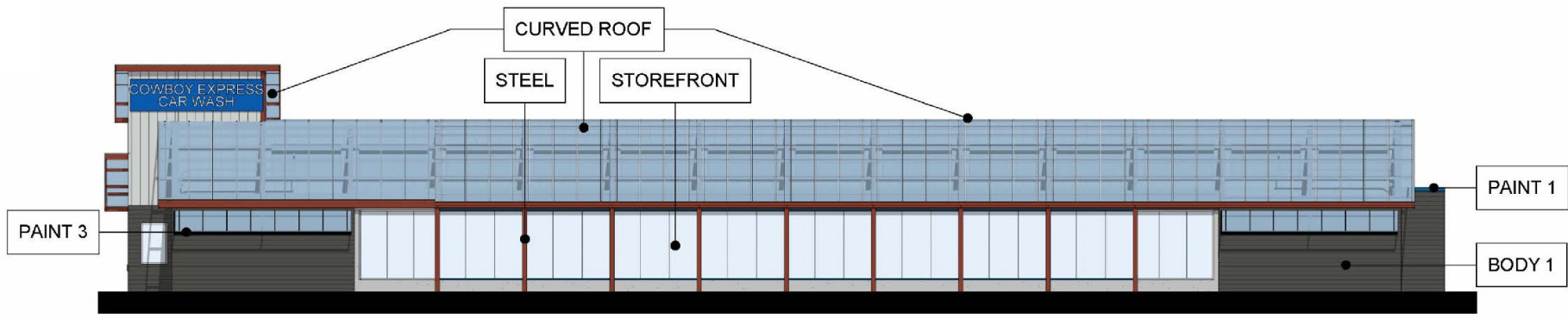
5x8 CURB INLET
TOP=1017.48'
E(18"HOPE)=1016'
E(18"HOPE)=1015'
E(24"HOPE)=1014'
BOTTOM OF BX
TO GET ACCUR
AND PIPE SIZE
TO DEBRIS AREA

SANITARY M
TOP=1017.92'
E(18"HOPE)=1016.59'
E(18"HOPE)=1017.65'
*NOTE

4x4 CURB INLET
TOP=1018.09'
E(18"HOPE)=1016'
E(24"HOPE)=1015'
E(24"HOPE)=1014'

4x4 CURB INLET
TOP=1018.00'
E(24"HOPE)=1013.75'

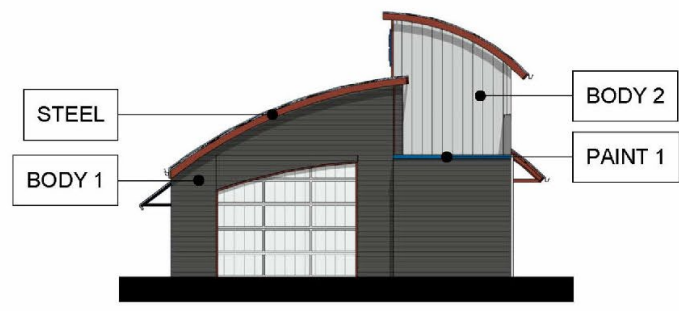




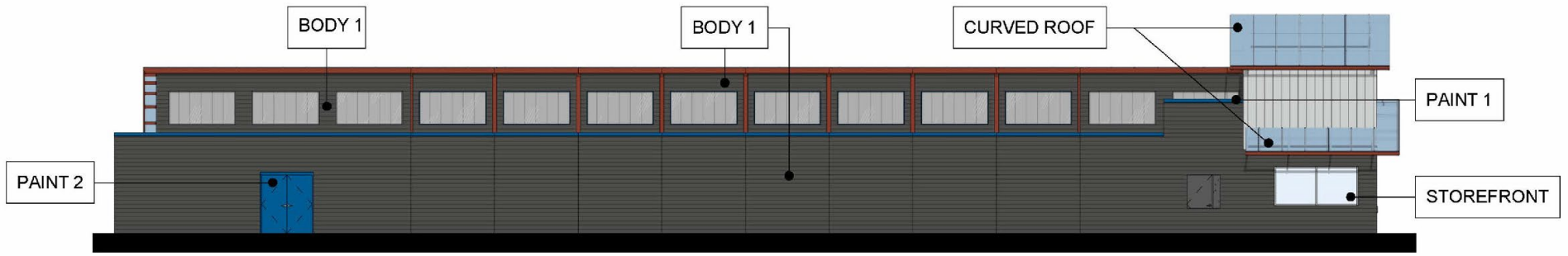
FRONT ELEVATION



LEFT ELEVATION



RIGHT ELEVATION



BACK ELEVATION

CURVED ROOF

EXPOSED STEEL [Red square] POLYCARBONATE ROOF [Blue square]

BODY 1

STUCCO SURFACE [Dark grey square]

BODY 2

METAL PANEL [Light grey square]

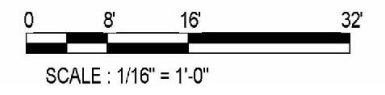
PAINT

WALL TRIM PAINT 1 [Blue square] DOORS & FRAMES PAINT 2 [Dark blue square]

AWNING PAINT 3 [Black square]

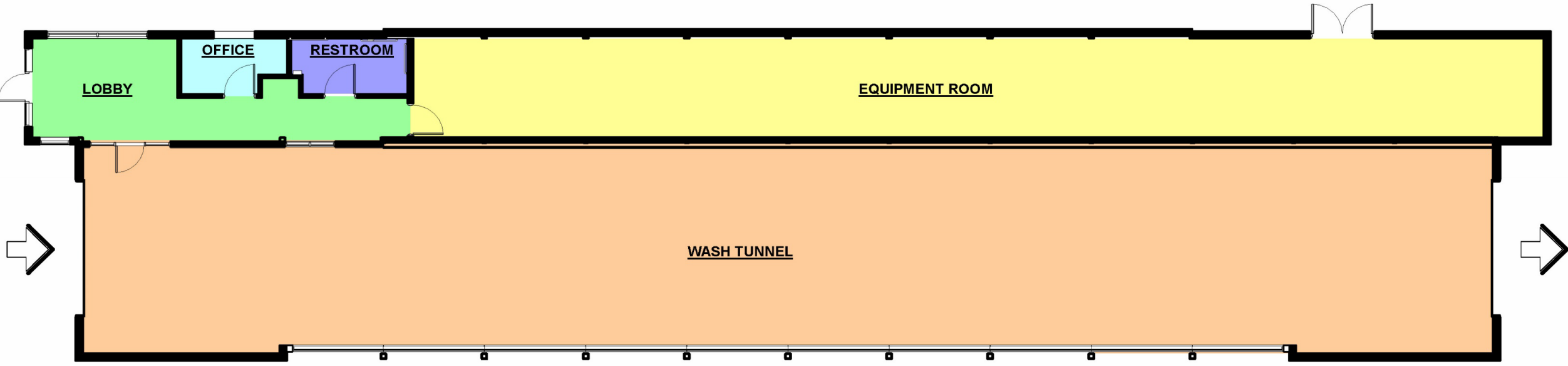
STOREFRONT

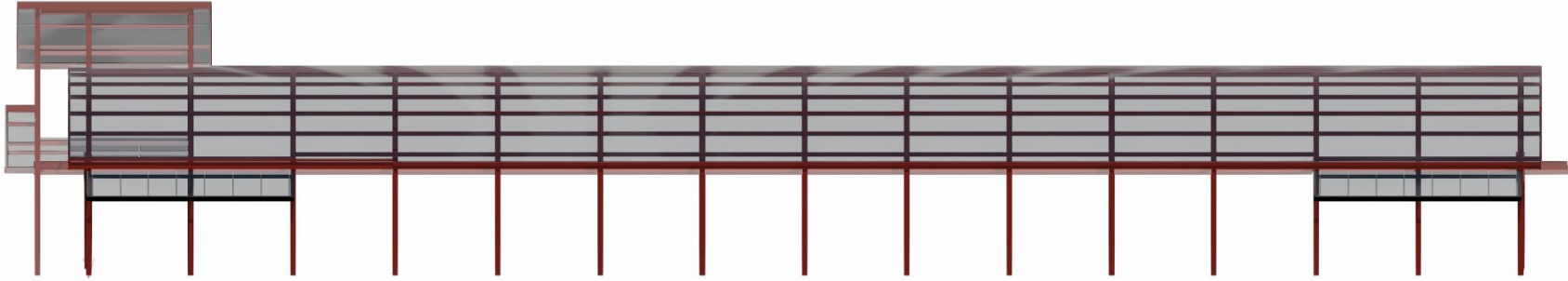
STOREFRONT [Light blue square]



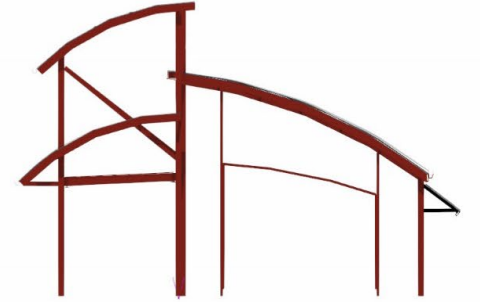
COLOR LEGEND

- EQUIPMENT ROOM
- LOBBY
- OFFICE
- RESTROOM
- WASH TUNNEL

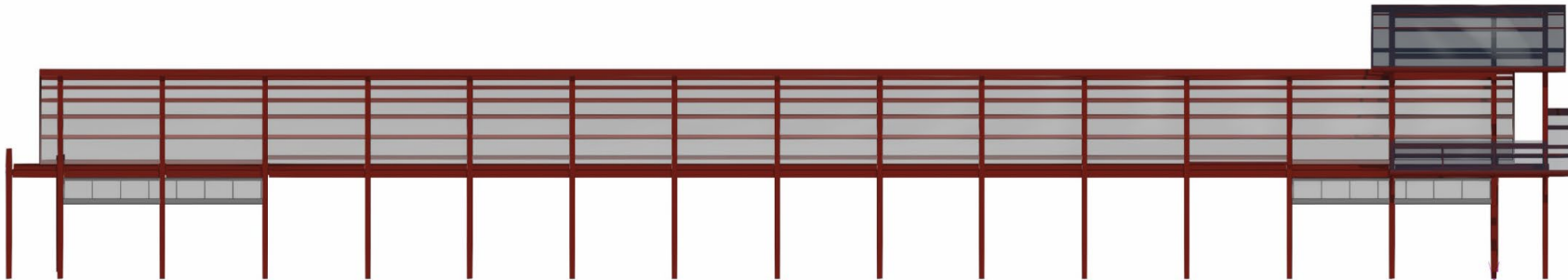




FRONT ELEVATION



LEFT ELEVATION



BACK ELEVATION



RIGHT ELEVATION

FRONT ELEVATION:

5% EXPOSED STEEL
45% POLYCARBONATE ROOF
16% STUCCO SURFACE (BODY 1)
2% METAL PANEL (BODY 2)
31% STOREFRONT
1% SIGNAGE

LEFT ELEVATION:

6% EXPOSED STEEL
37% STUCCO SURFACE (BODY 1)
27% METAL PANEL (BODY 2)
30% STOREFRONT

RIGHT ELEVATION:

4% EXPOSED STEEL
51% STUCCO SURFACE (BODY 1)
21% METAL PANEL (BODY 2)
24% STOREFRONT

REAR ELEVATION:

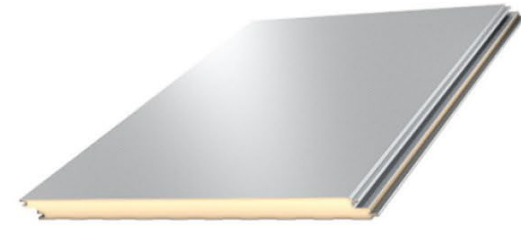
5% EXPOSED STEEL
6% POLYCARBONATE ROOF
70% STUCCO SURFACE (BODY 1)
3% METAL PANEL (BODY 2)
16% STOREFRONT



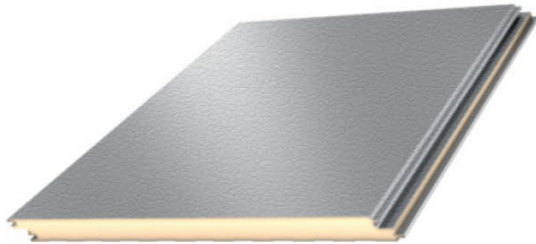
Mesa (DM40)



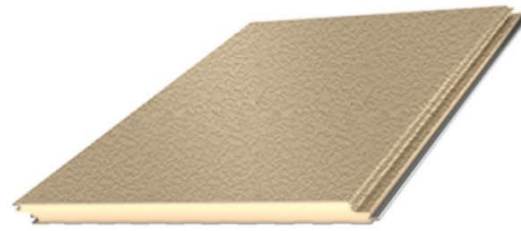
Mesa (DM44)



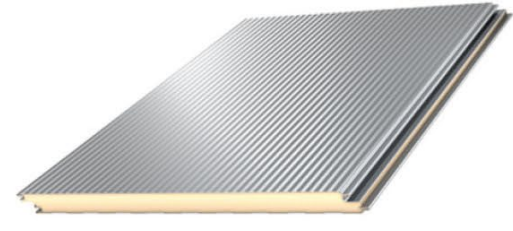
Flat (FL40)



Heavy Embossed (HE40)



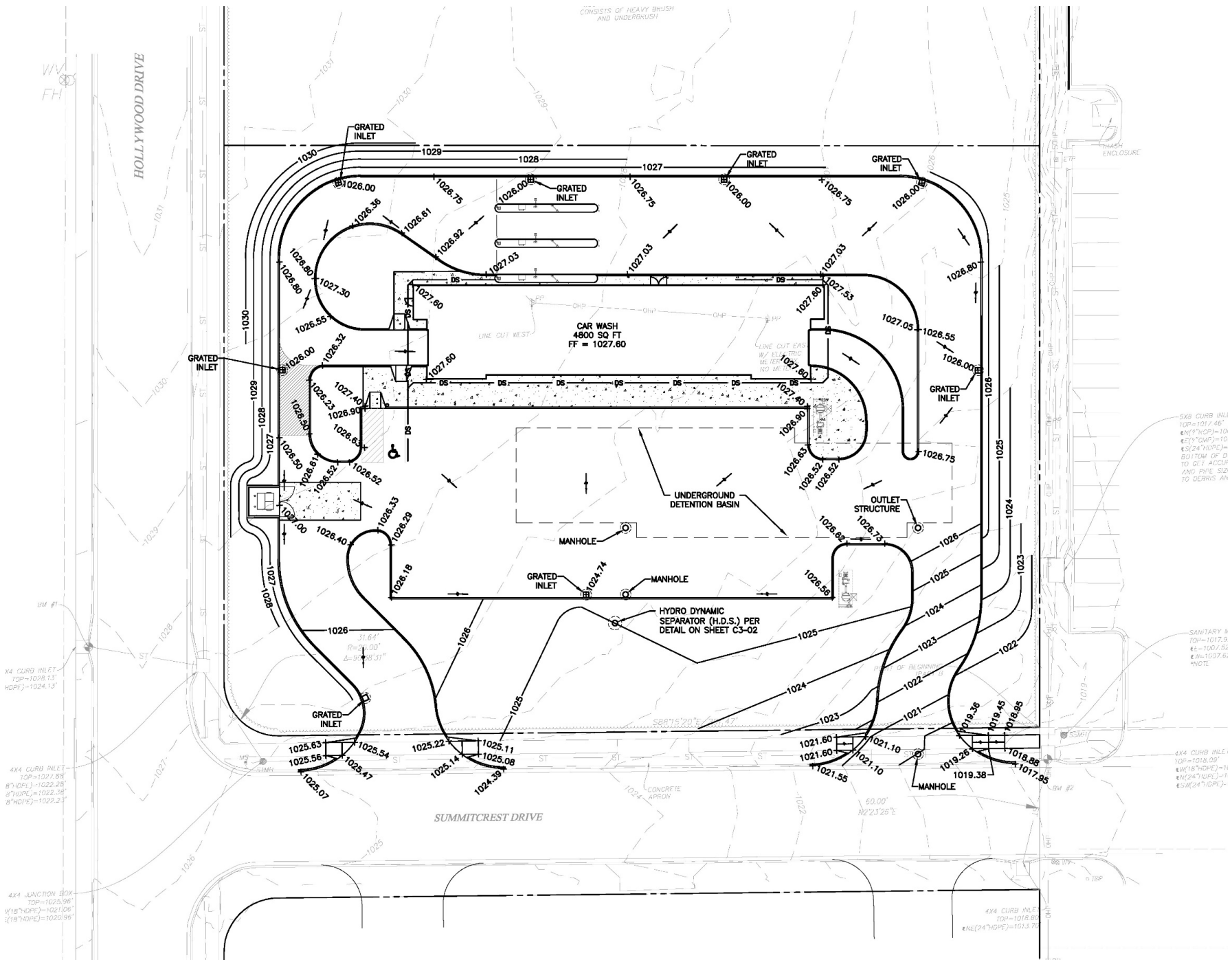
AdobeTexture® (HE40A)



Striated (ST40)



Your vision. Our purpose.



5XB CURB INLET
 TOP=1017.46"
 4X(18"HDPE)=10"
 4X(12"HDPE)=10"
 4X(24"HDPE)=10"
 50' TOW. OF D.
 TO Q11 AND Q12
 2XIS PIPE SIZE
 TO DERIVS AN

SANITARY
 TOP=1017.9"
 4X=100'/52"
 4X=1007.6"
 *NOTE

4X4 CURB INLET
 TOP=1018.00"
 4X(18"HDPE)=11"
 4X(24"HDPE)=11"
 4X(24"HDPE)=11"

4X4 CURB INLET
 TOP=1028.13"
 HDPE=1024.13"

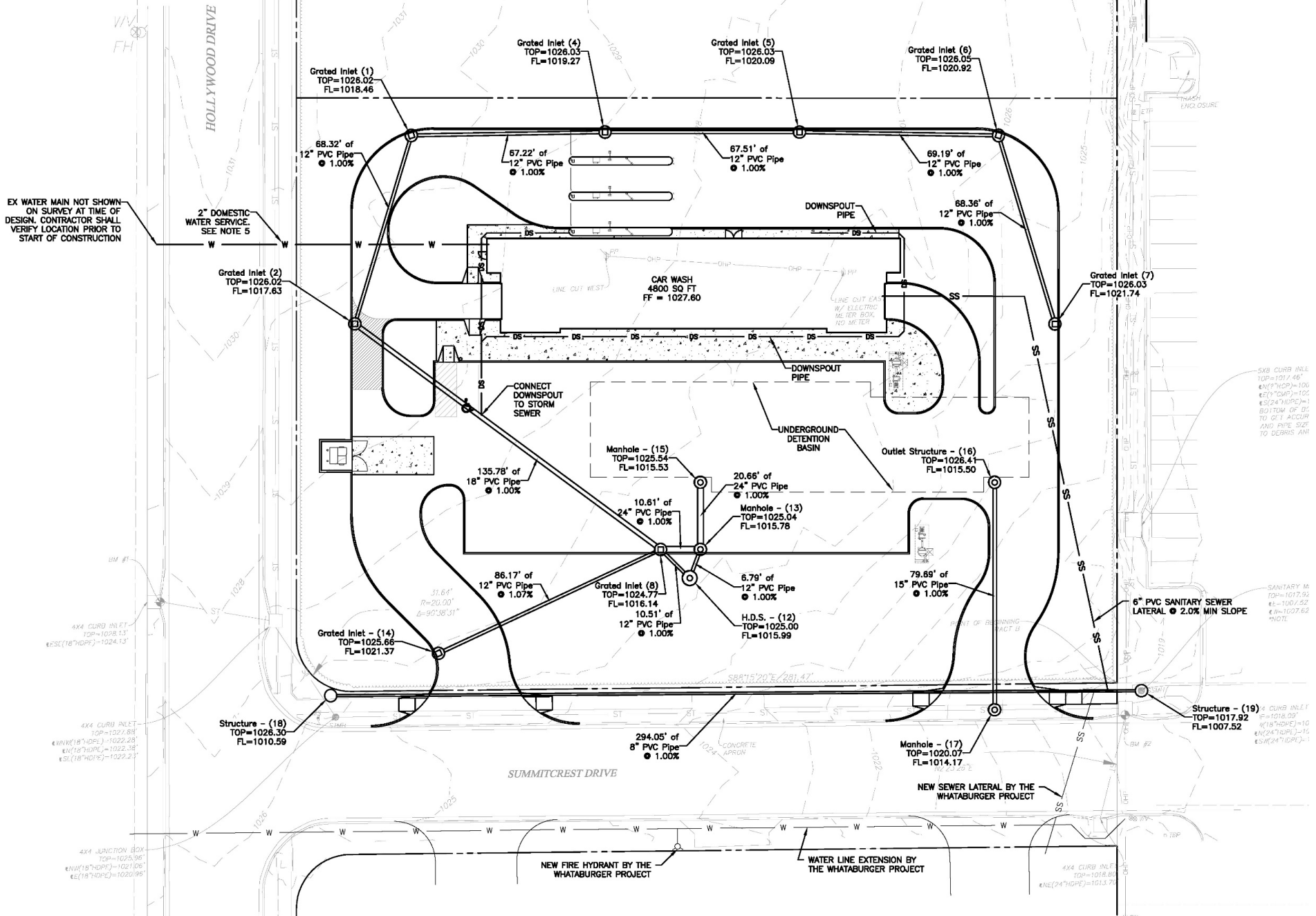
4X4 CURB INLET
 TOP=1027.88"
 8"(18"HDPE)=1022.28"
 8"(12"HDPE)=1022.18"
 8"(12"HDPE)=1022.27"

4X4 JUNCTION BOX
 TOP=1025.96"
 8"(18"HDPE)=1021.09"
 8"(18"HDPE)=1020.96"

4X4 CURB INLET
 TOP=1018.80"
 4X(24"HDPE)=1013.75"

EX WATER MAIN NOT SHOWN ON SURVEY AT TIME OF DESIGN. CONTRACTOR SHALL VERIFY LOCATION PRIOR TO START OF CONSTRUCTION

2" DOMESTIC WATER SERVICE. SEE NOTE 5



Grated Inlet (1)
TOP=1026.02
FL=1018.46

Grated Inlet (4)
TOP=1026.03
FL=1019.27

Grated Inlet (5)
TOP=1026.09
FL=1020.09

Grated Inlet (6)
TOP=1026.05
FL=1020.92

Grated Inlet (2)
TOP=1026.02
FL=1017.63

Grated Inlet (7)
TOP=1026.03
FL=1021.74

Manhole - (15)
TOP=1025.54
FL=1015.53

Outlet Structure - (16)
TOP=1028.41
FL=1015.50

Manhole - (13)
TOP=1025.04
FL=1015.78

Grated Inlet (8)
TOP=1024.77
FL=1016.14

H.D.S. - (12)
TOP=1025.00
FL=1015.99

Grated Inlet - (14)
TOP=1025.66
FL=1021.37

79.69' of 15" PVC Pipe @ 1.00%

Structure - (18)
TOP=1026.30
FL=1010.59

Structure - (19)
TOP=1017.92
FL=1007.52

294.05' of 8" PVC Pipe @ 1.00%

Manhole - (17)
TOP=1020.07
FL=1014.17

4x4 CURB INLET
TOP=1028.13
E(S)(18"HDPE)=1024.13

4x4 CURB INLET
TOP=1021.88
E(W)(18"HDPE)=1022.28
E(N)(18"HDPE)=1022.38
E(S)(18"HDPE)=1022.21

4x4 JUNCTION BOX
TOP=1025.96
E(W)(18"HDPE)=1021.06
E(S)(18"HDPE)=1020.96

5x8 CURB INLET
TOP=1017.46
E(N)(2"HDPE)=100
E(S)(2"HDPE)=100
E(W)(2"HDPE)=100
BOTTOM OF DS TO CITY ACCUR AND PIPE SIZE TO DERMS APP

SANITARY M
TOP=1017.92
E(S)=1007.52
E(W)=1007.62
*NOTE

4x4 CURB INLET
TOP=1018.66
E(N)(24"HDPE)=1013.75

NEW FIRE HYDRANT BY THE WHATABURGER PROJECT

WATER LINE EXTENSION BY THE WHATABURGER PROJECT

NEW SEWER LATERAL BY THE WHATABURGER PROJECT

SUMMITCREST DRIVE

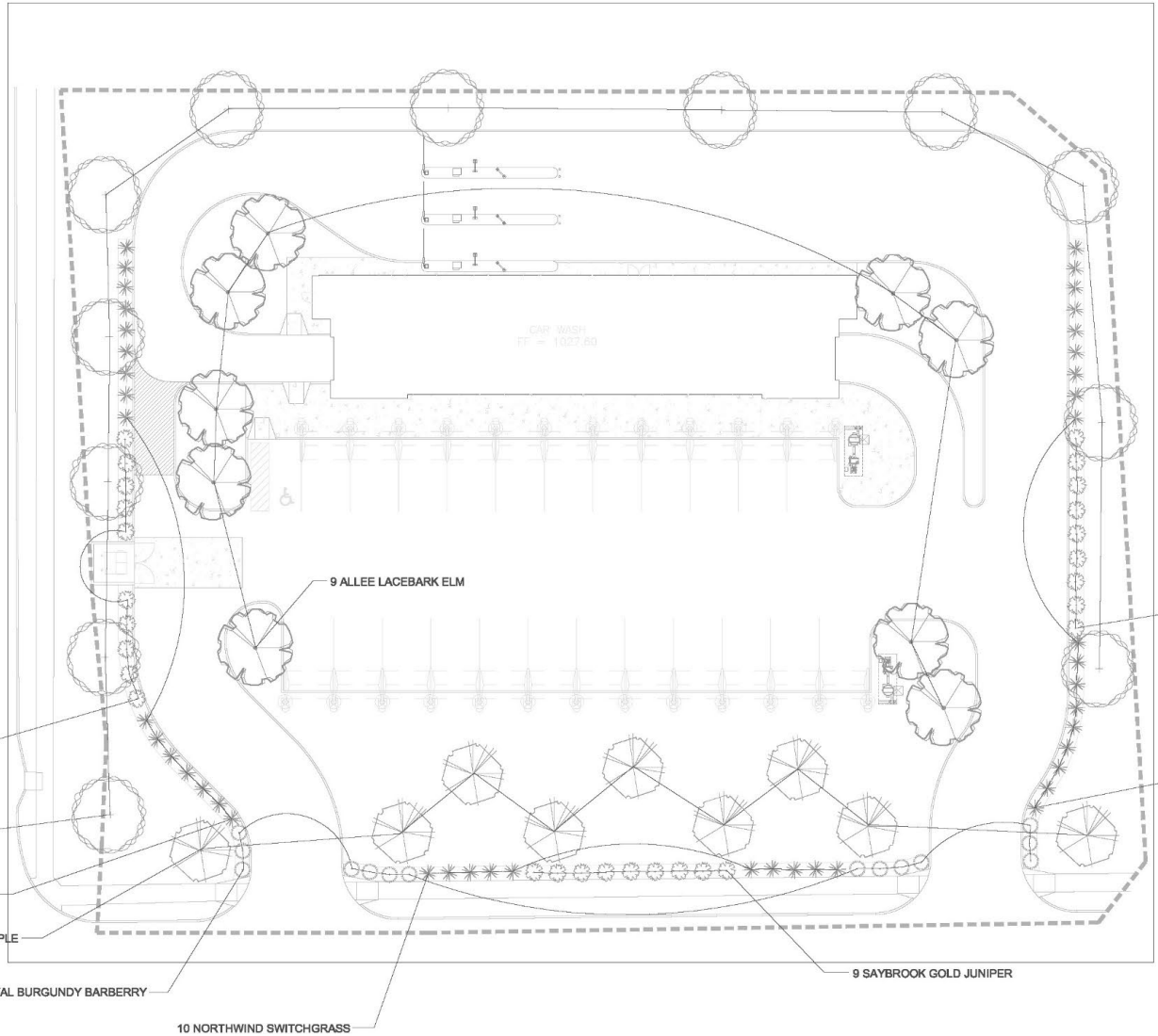
HOLLYWOOD DRIVE

LANDSCAPE CALCULATIONS

STREET FRONTAGE: 540 L.F.
 STREET FRONTAGE TREES REQUIRED: 18
 STREET FRONTAGE TREES PROVIDED: 18
 STREET FRONTAGE SHRUBS REQUIRED: 27
 STREET FRONTAGE SHRUBS PROVIDED: 80 (ALSO PARKING LOT SCREENING)

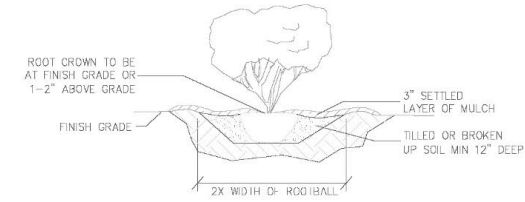
OPEN YARD AREA: 62,048 S.F.
 OPEN YARD TREES REQUIRED: 12
 OPEN YARD TREES PROVIDED: 12

PLANT SCHEDULE			
QUANTITY	TREE/SHRUB: COMMON NAME	BOTANICAL NAME	SIZE
38	NORTHWIND SWITCHGRASS	PANICUM VIRGATUM 'NORTHWIND'	3 GAL.
14	ROYAL BURGUNDY BARBERRY	BERBERIS THUNBERGII 'GENTRY'	3 GAL.
28	SAYBROOK GOLD JUNIPER	JUNIPERUS PFITZERIANA 'SAYBROOK GOLD'	3 GAL.
9	ALLEE LACEBARK ELM	ULMUS PARVIFOLIA 'ALLEE'	3" CAL
12	REDPOINTE MAPLE	ACER RUBRUM 'REDPOINT'	3" CAL
9	SPRING SNOW CRABAPPLE	MALUS X 'SPRING SNOW'	3" CAL.

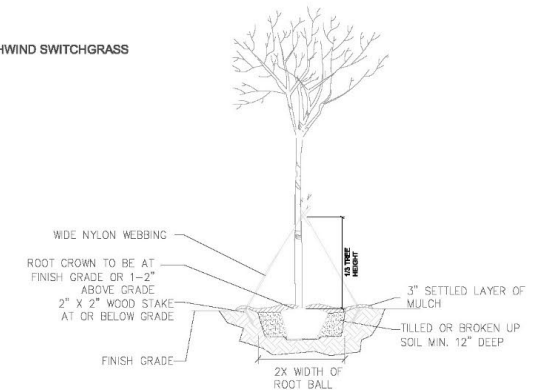


NOTES: TYPICAL SHRUB PLANTING, INDIVIDUAL PLANTING HOLE

1. DIG PLANTING HOLE AT LEAST 2X THE WIDTH OF THE ROOT BALL OR CONTAINER.
2. SCARIFY SUBGRADE AND SIDES OF PLANTING HOLE WHEN PLANTING IN CLAY SOIL.
3. SET THE TOP OF THE ROOT BALL LEVEL WITH THE SOIL SURFACE, OR 1-2" ABOVE IF THE SOIL IS PRONE TO SETTLING.
4. IF CONTAINER GROWN PLANT, GENTLY SLIDE PLANT OUT OF CONTAINER. DISTURB THE ROOTS.
5. IF B&B PLANT, REMOVE BURLAP FROM AT LEAST THE TOP 12 INCHES OF THE ROOTBALL, WITHOUT DISTURBING THE ROOTBALL. REMOVE ALL CORD FROM THE TRUNK. REMOVE BURLAP AND WIRE BASKET (IF PRESENT) FROM THE ROOT BALL.
6. BACK FILL THE PLANTING HOLE WITH EXCAVATED NATIVE SOIL, BROKEN UP OR TILLED. WATER TO REMOVE AIR POCKETS. DO NOT ADD AMENDMENTS.
7. PLACE PINE STRAW OR BARK MULCH ON THE SURFACE TO A (SETTLED) DEPTH OF 1 TO 3 INCHES.



SHRUB PLANTING
NOT TO SCALE



TREE PLANTING
NOT TO SCALE



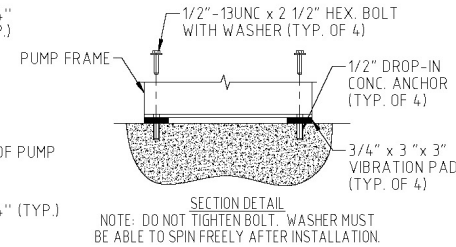
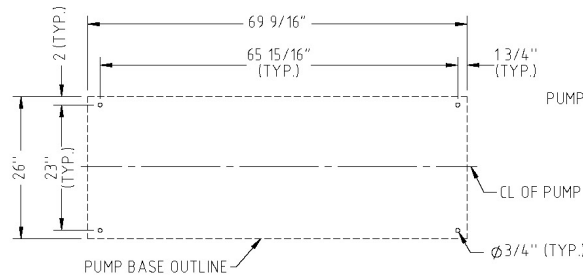
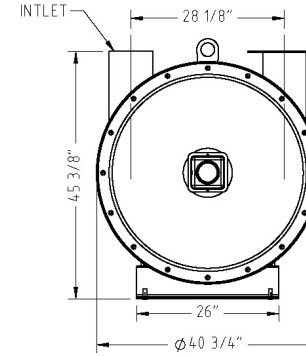
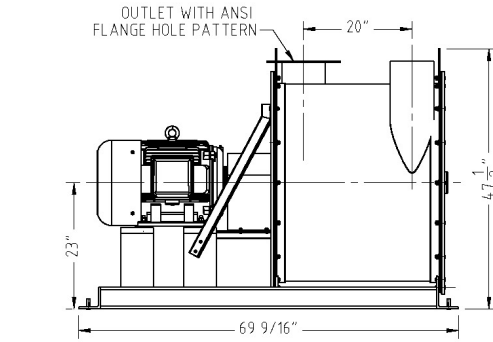
LANDSCAPE PLAN

PRODUCT SPECIFICATIONS

PRODUCT:
50 HP MULTI-STAGE CENTRIFUGAL EXHAUSTER

PART NO.
50HP-40E-07505036

DATE
12/15/2018



CATALOGUE NUMBER	POWER HP (Kw)	MOTOR RPM	MAX VOLUME CFM	VACUUM IN Hg (IN Wg)	VOLT/PHASE/FREQ. FLA	NUMBER OF STAGES	INLET O.D. IN(mm)	OUTLET O.D. IN(mm)	APPROX. WT. lb (kg)	HEAT RATE (BTU/Hr)	DISTANCE (FT.)	SOUND LEVEL (dBA)
423B50	50 (36.8)	3600	1430	7.5 (102)	460/3/60 58A 575/3/60 46A	4	8(200)	8(200)	1118 (507)	17060	3	89
											10	79
											50	65
											100	59
											150	55

NOTES:

1. ALL DIMENSIONS SHOWN ARE FOR REFERENCE PURPOSES ONLY, NOT FOR CONSTRUCTION USE.
2. HEIGHT OF UNIT DOES NOT INCLUDE VIBRATION ISOLATOR.
3. NO SPECIAL FOUNDATION IS REQUIRED FOR EXHAUSTERS, DO NOT FASTEN DOWN TO CONCRETE FLOOR.
4. STANDARD ROTATION IS CW WHEN VIEWED FROM MOTOR END.
5. INLET FURNISHED STANDARD WITH BUTTERFLY THROTTLING VALVE.
6. SPECIFICATIONS SUBJECT TO CHANGE WITHOUT NOTICE.

NOTE: ALL DIMENSIONS ARE IN INCHES.

THIS DOCUMENT CONTAINS PROPRIETARY AND CONFIDENTIAL DATA OF CLEAN AIR TECHNOLOGIES/EUROVAC INC. NO DISCLOSURE, REPRODUCTION OR USE OF ANY PART THEREOF MAY BE MADE WITHOUT WRITTEN PERMISSION OF THE COMPANY.