

PL2024-008

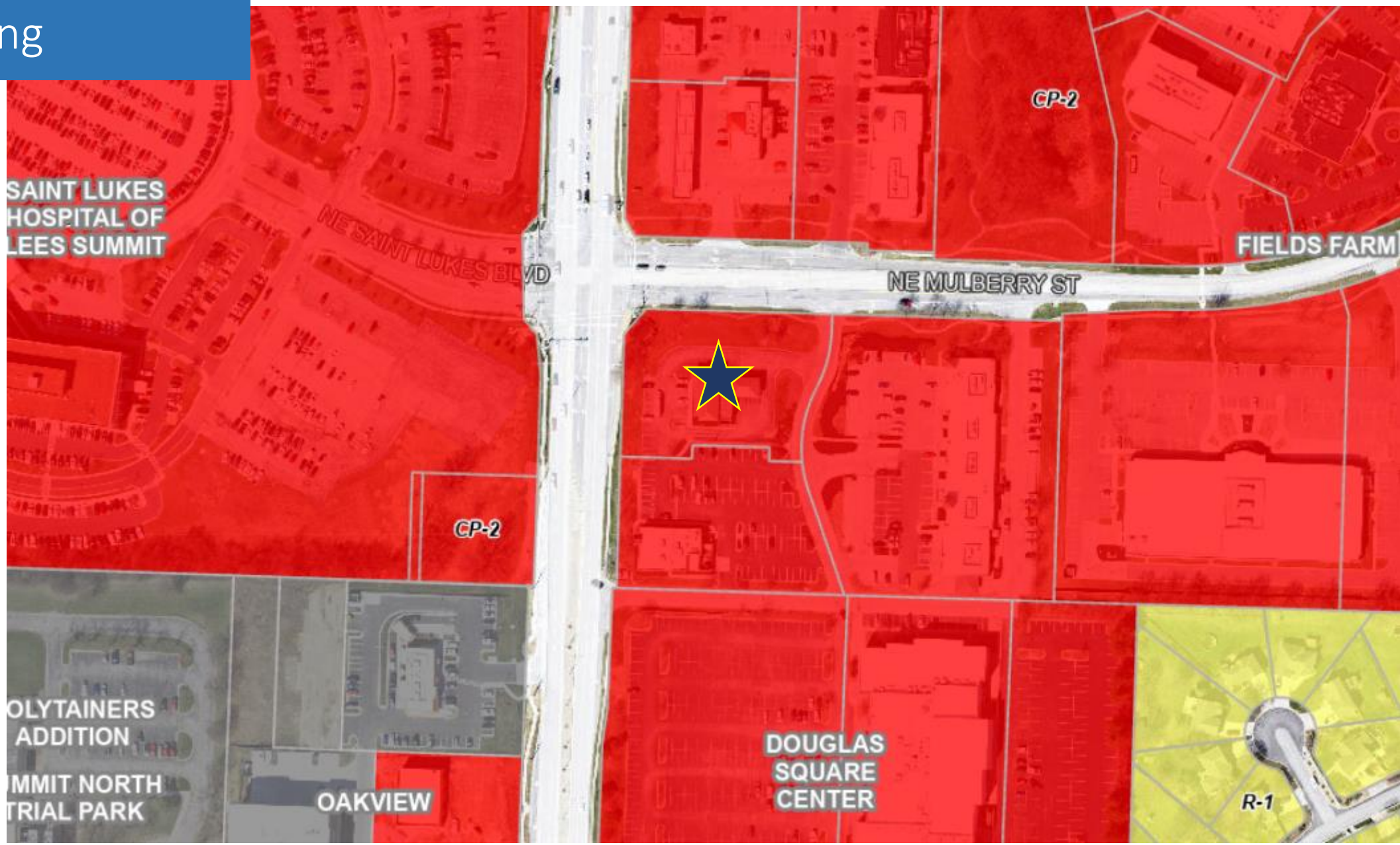
US Bank Preliminary Development Plan



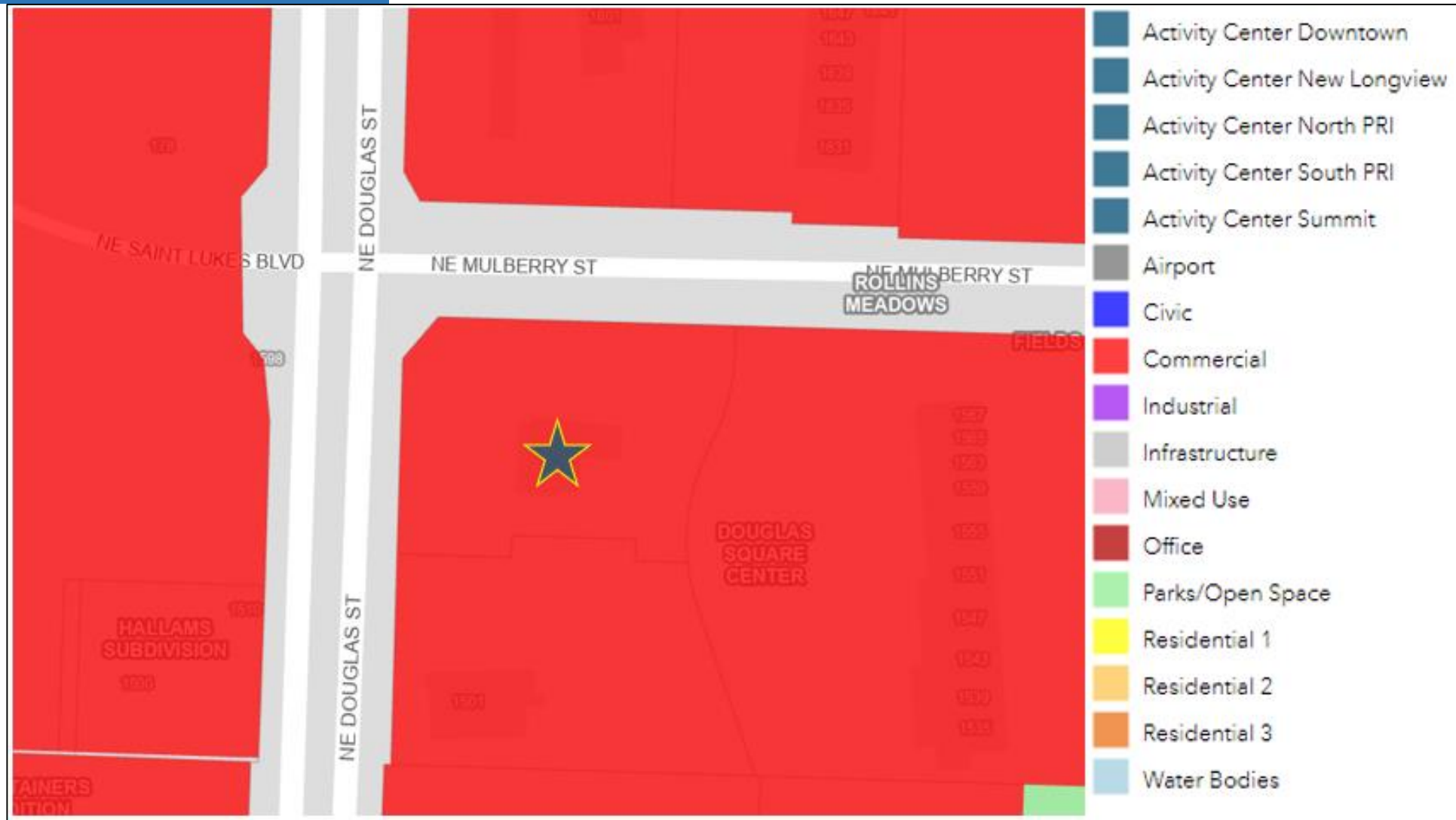
City Council – April 23, 2024

Zoning

- 1599 NE Douglas
- CP-2 Zoning

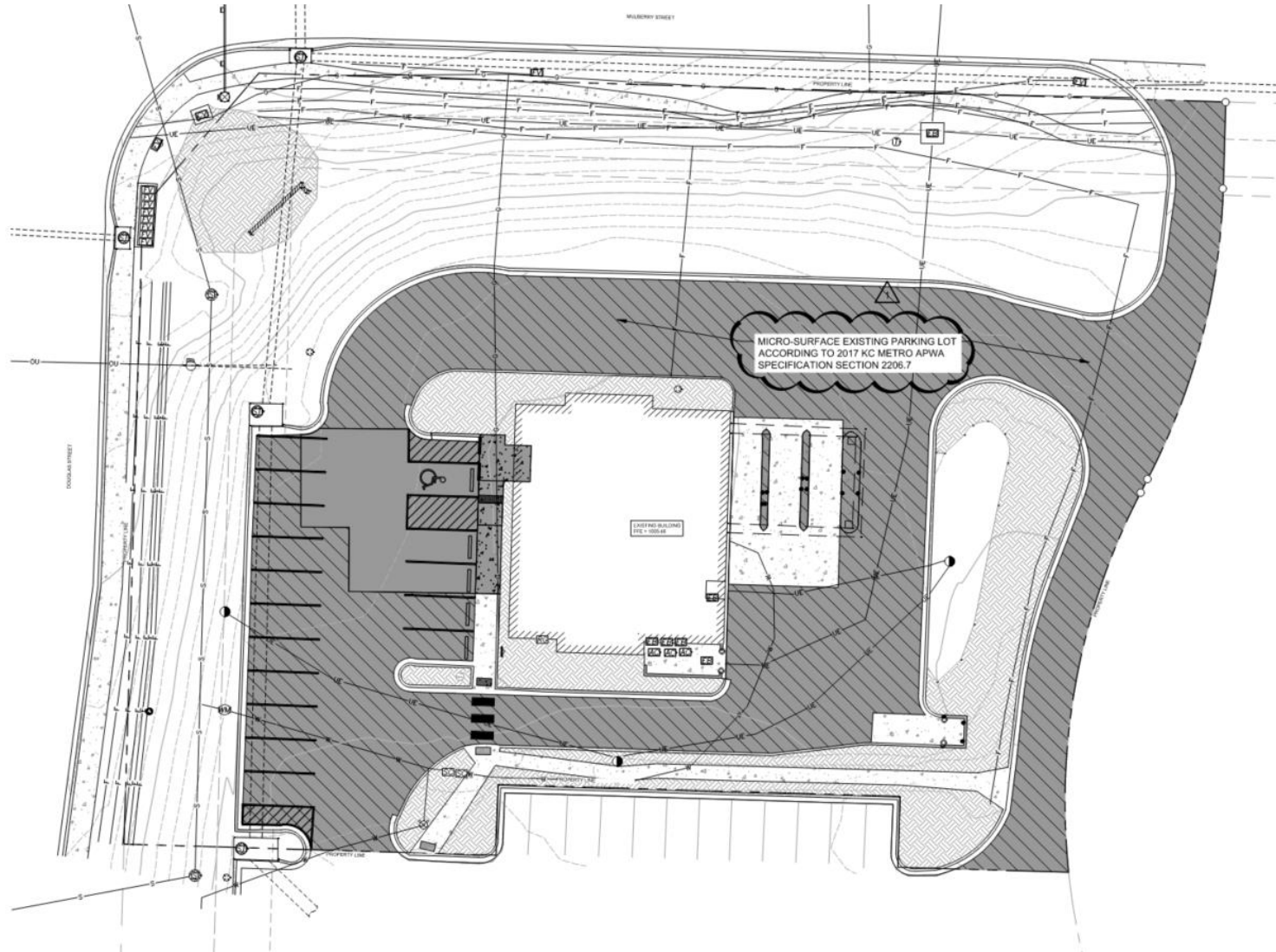


Ignite! Land Use Map



Site Plan

- 1.23 acres
- 3,394 sq. ft. building
- Project Scope:
 - Parking lot resurface
 - Exterior façade (Architectural Metal)

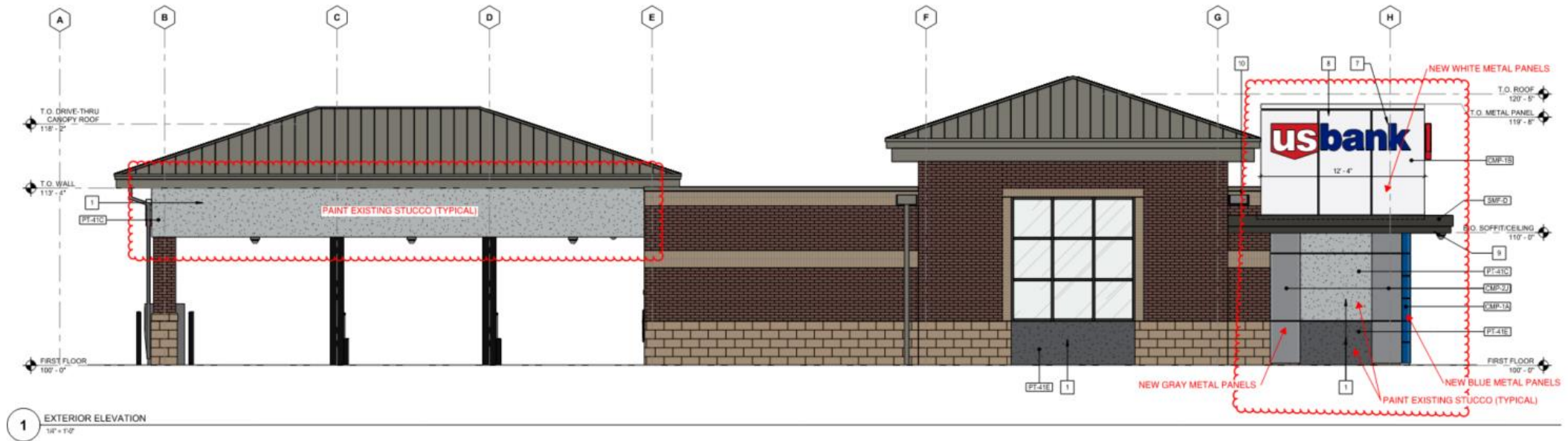


Architectural Elevations West (Front)



Elevation	Percentage Metal Material
West (front)	27.3%

Architectural Elevations North

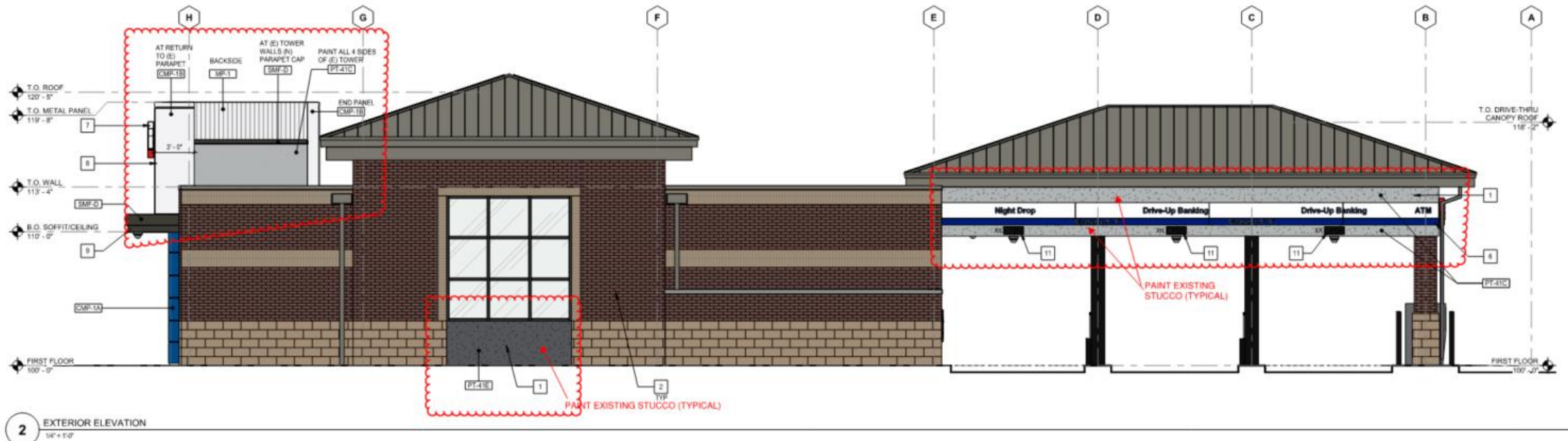


Elevation	Percentage Metal Material
North	10.7%

Architectural Elevations East



Architectural Elevations South



Compatibility



B&B Theatres 16



BOK Financial

Approval Conditions

1. Development shall be in accordance with the preliminary development plan with a revision date of February 27, 2024.
2. Development shall be in accordance with the building elevations dated October 6, 2023 with an upload date of January 24, 2024.

PL2024-008

US Bank Preliminary Development Plan



City Council – April 23, 2024

Color Table

Material Code	Color
PT-41E (Bottom trim)	Web Gray
PT-41C (Top Trim)	Network Gray
CMP-1A	Award Blue
CMP-1B	Bone White
CMP-2J	Slate Gray
SMF-D	Midnight Bronze

CMP Diagram

