

# Mid-Continent Public Library Preliminary Development Plan

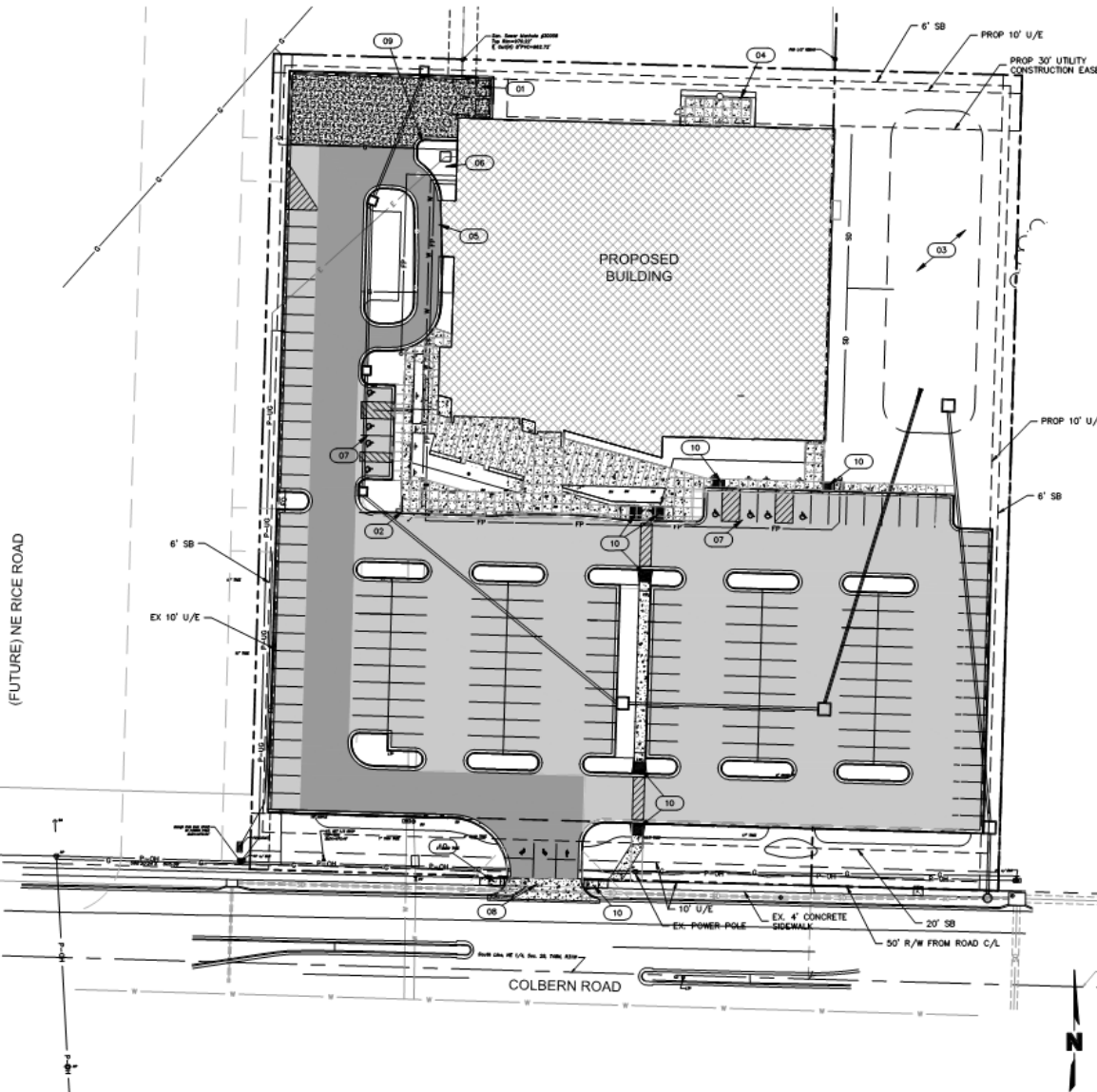
PL2019-378  
January 9, 2020



**LEE'S SUMMIT**  
MISSOURI

*Yours Truly*





Structure Size  
34,030 sq. ft.

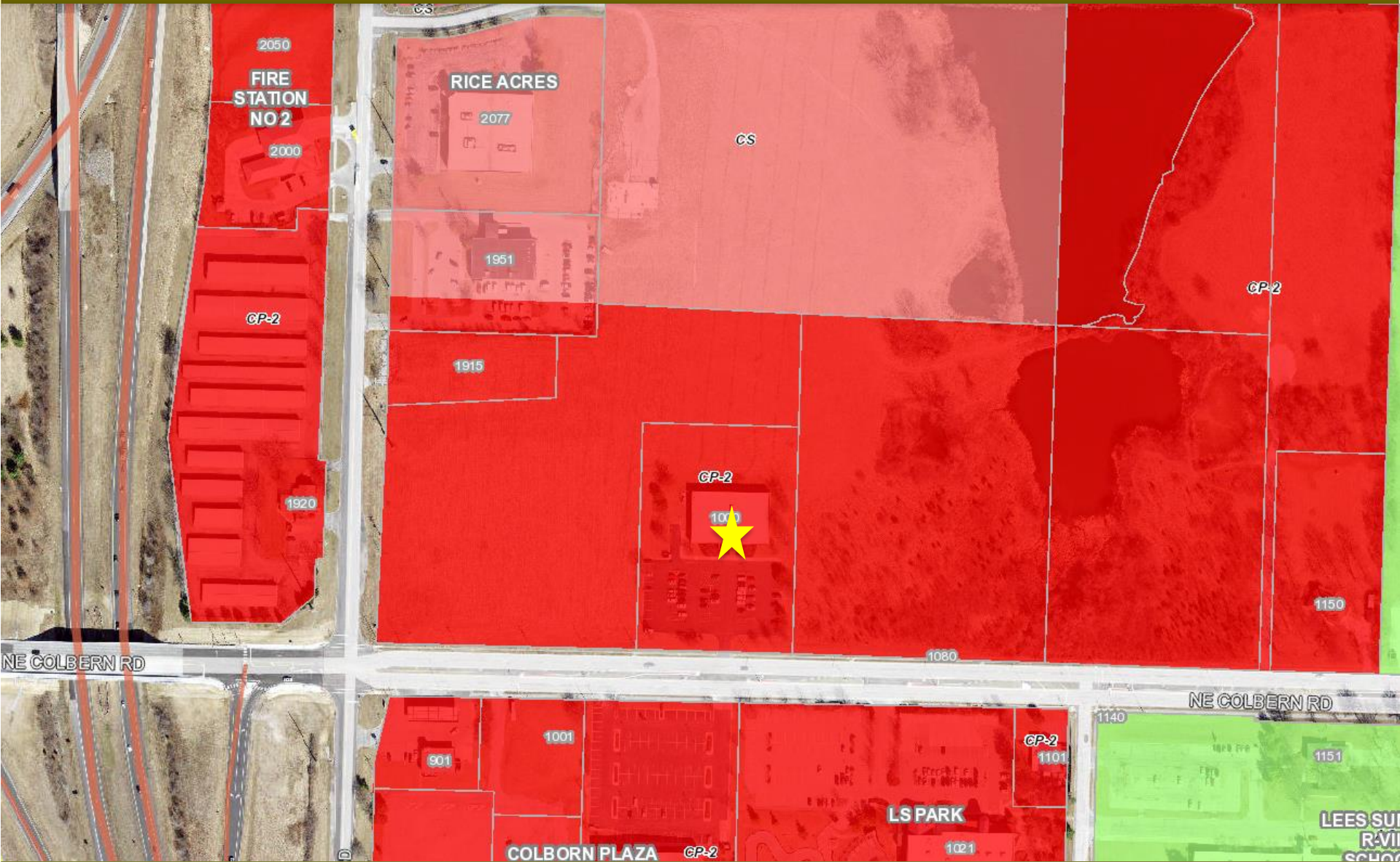
Building Height  
26'8"

Number of Sotries  
1

Floor area Ratio  
0.15 (0.55 Max)

Parking  
163 proposed  
136 required

Impervious Coverage  
64%



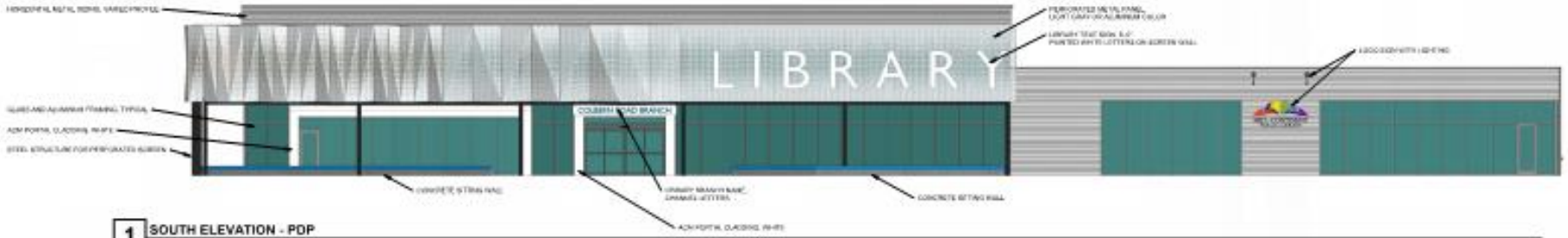
LS

# Aerial/Zoning Map

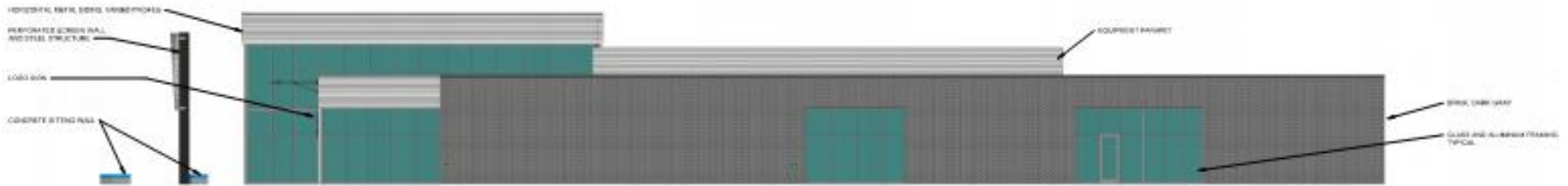


LS

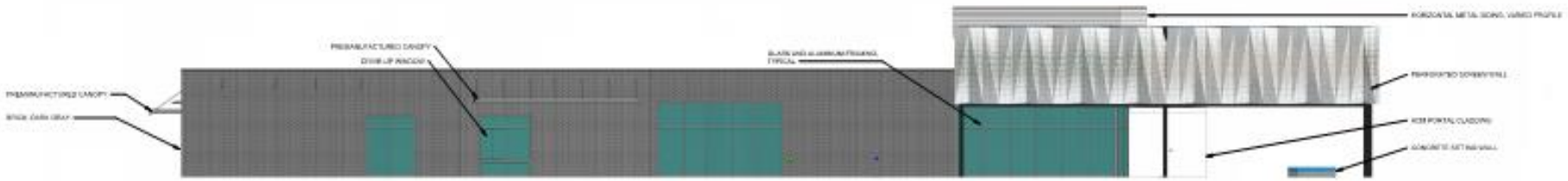
Elevations



**1 SOUTH ELEVATION - PDP**  
1/8" = 1'-0"



**2 EAST ELEVATION - PDP**  
1/8" = 1'-0"



**3 WEST ELEVATION - PDP**  
1/8" = 1'-0"



1. The use of aluminum composite metal (ACM) panels shall be granted as a conditional material as shown on the building elevations date stamped December 10, 2019.
2. Several references to a 1-year storm event remain in the body of the Preliminary Storm Water Management Study, however all calculations have been revised to use the 2-year storm event. Revisions to reference the 2-year storm event throughout the body of the study will be required on the Final Storm Water Management Study, which will be submitted with the Final Development Plan submittal.
3. Locate the Backflow Prevention Device as required in Design and Construction Manual Section 6901.H.3. This relocation will be required on the Final Development Plan submittal.
4. The location of fire department connections shall be approved by the fire code official. Connections shall be a 4 inch Storz type fitting and located within 100 feet of a fire hydrant, or as approved by the code official.
5. Development shall comply with the recommendation of the Transportation Impact Analysis (TIA) dated January 3, 2020, prepared by Michael Park, City Traffic Engineer.