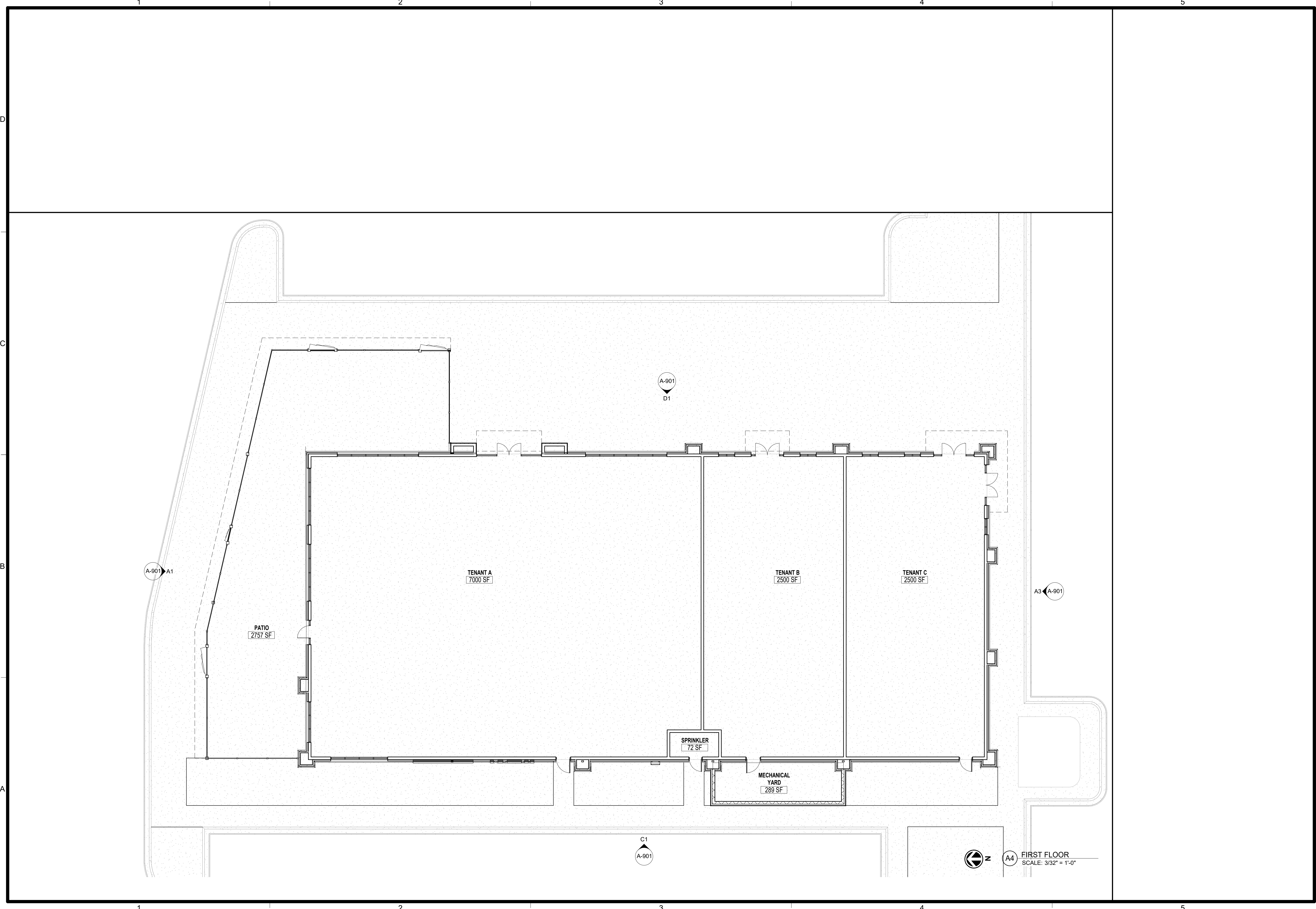


FILEPATH: F:\1\_P\Projects\SDG\235008\_SOWP Lot 13\05\_Drawings - Working\Revit\235008\_SOWP Lot 13\_V23.rvt  
DATE: 7/27/2023 3:03:57 PM  
DRAWN BY: Author



**schwerdt design group**  
architecture | interiors | planning  
2231 sw wansmaker rd suite 303  
topeka, kansas 66614-4275  
phone: 785.273.7540  
fax: 785.273.7579  
500 north broadway suite 200  
oklahoma city, ok 73102  
phone: 405.231.3105  
fax: 405.231.3115

PROGRESS PRINT  
NOT FOR  
CONSTRUCTION  
DATE: 00/00/00

**CORE & SHELL BUILDING  
STREETS OF WEST PRYOR LOT 13**  
1020 NW PRYOR ROAD, LEES SUMMIT, MISSOURI

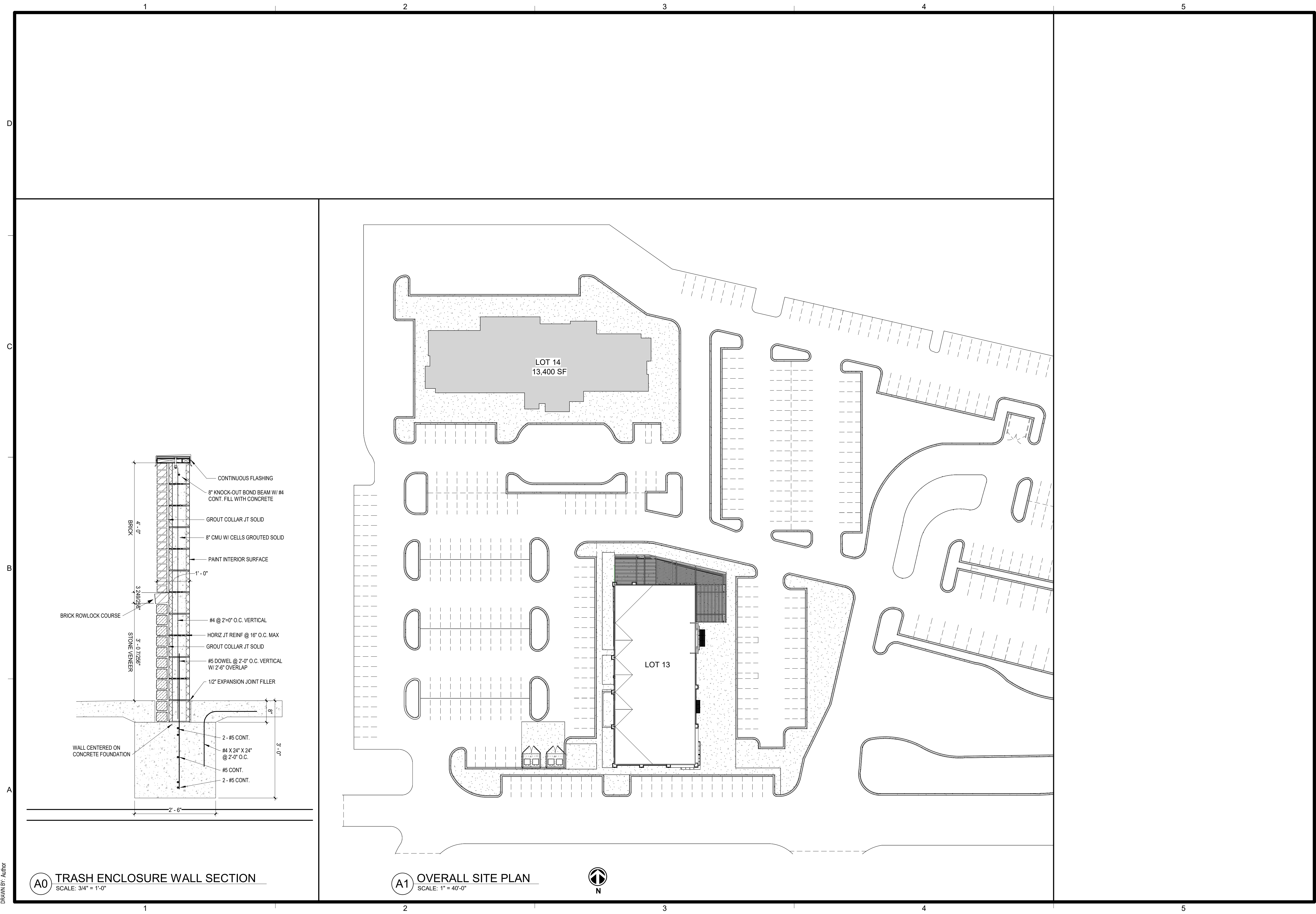
SUBMISSION DATES  
PROGRESS PRINT ONLY

SHEET TITLE  
FIRST FLOOR PLAN

PROJECT NUMBER  
**235008**

SHEET NUMBER  
**A-101**

FILEPATH: F:\11\_P\Projects\SDG235008\_SOWP Lot 13\05\_Drawings - Working\Revit\235008\_SOWP Lot 13\_V23.rvt  
 DATE: 7/27/2023 3:00:39 PM  
 DRAWN BY: Author



**A0 TRASH ENCLOSURE WALL SECTION**  
 SCALE: 3/4" = 1'-0"

**A1 OVERALL SITE PLAN**  
 SCALE: 1" = 40'-0"



**schwerdt design group**  
 architecture | interiors | planning  
 2231 sw wansmaker rd suite 303  
 topeka, kansas 66614-4275  
 phone: 785.273.7540  
 fax: 785.273.7579  
 500 north broadway suite 200  
 oklahoma city, ok 73102  
 phone: 405.231.3105  
 fax: 405.231.3115

PROGRESS PRINT  
 NOT FOR CONSTRUCTION  
 DATE: 00/00/00

**CORE & SHELL BUILDING**  
**STREETS OF WEST PRYOR LOT 13**  
 1020 NW PRYOR ROAD, LEES SUMMIT, MISSOURI

SUBMISSION DATES  
 PROGRESS PRINT ONLY

SHEET TITLE  
 SITE PLAN

PROJECT NUMBER  
**235008**

SHEET NUMBER  
**A-103**

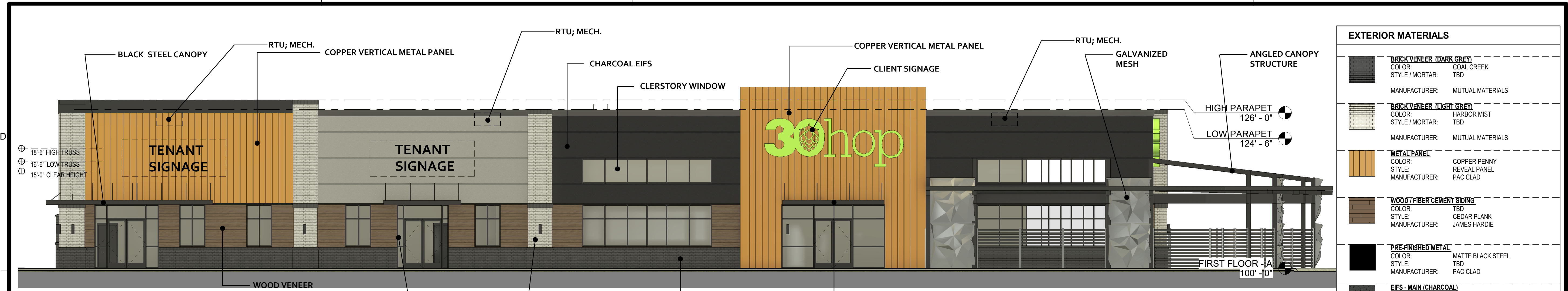
1

2

3

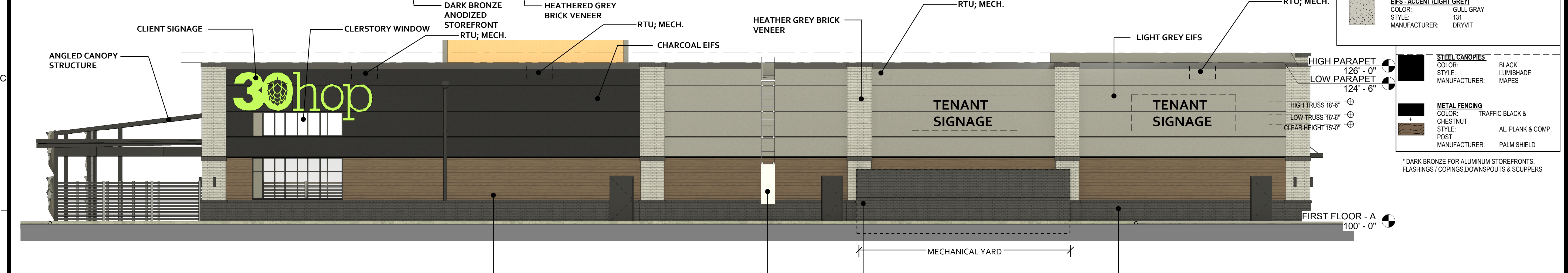
4

5

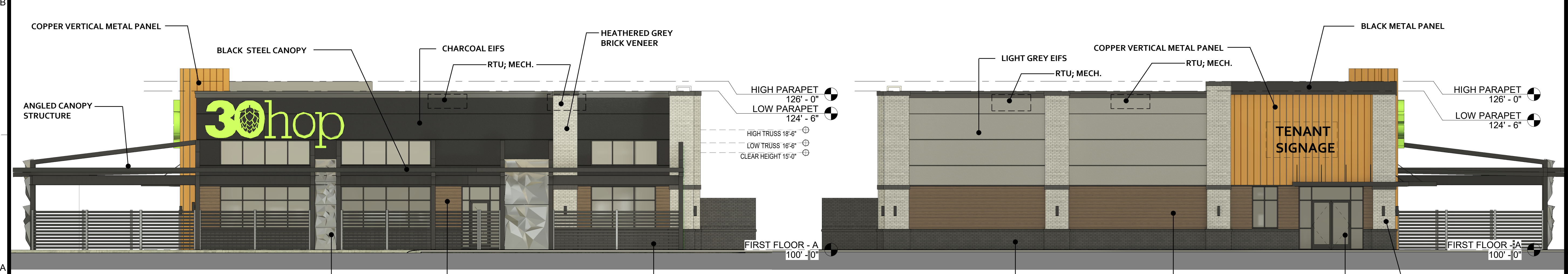


**D1 EAST ELEVATION RENDERED**  
SCALE: 1/8" = 1'-0"

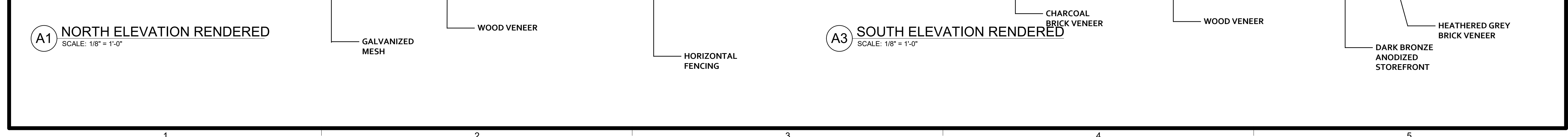
EXTERIOR MATERIALS	
	<b>BRICK VENEER (DARK GREY)</b> COLOR: COAL CREEK STYLE / MORTAR: TBD MANUFACTURER: MUTUAL MATERIALS
	<b>BRICK VENEER (LIGHT GREY)</b> COLOR: HARBOR MIST STYLE / MORTAR: TBD MANUFACTURER: MUTUAL MATERIALS
	<b>METAL PANEL</b> COLOR: COPPER PENNY STYLE: REVEAL PANEL MANUFACTURER: PAC CLAD
	<b>WOOD / FIBER CEMENT SIDING</b> COLOR: TBD STYLE: CEDAR PLANK MANUFACTURER: JAMES HARDIE
	<b>PRE-FINISHED METAL</b> COLOR: MATTE BLACK STEEL STYLE: TBD MANUFACTURER: PAC CLAD
	<b>EIFS - MAIN (CHARCOAL)</b> COLOR: ANTHRACITE COAL STYLE: 152 MANUFACTURER: DRYVIT
	<b>EIFS - ACCENT (LIGHT GREY)</b> COLOR: GULL GRAY STYLE: 131 MANUFACTURER: DRYVIT
	<b>STEEL CANOPIES</b> COLOR: BLACK STYLE: LUMISHADE MANUFACTURER: MAPES
	<b>METAL FENCING</b> COLOR: TRAFFIC BLACK & CHESTNUT STYLE: AL. PLANK & COMP. POST MANUFACTURER: PALM SHIELD



**C1 WEST ELEVATION RENDERED**  
SCALE: 1/8" = 1'-0"



**A1 NORTH ELEVATION RENDERED**  
SCALE: 1/8" = 1'-0"



**A3 SOUTH ELEVATION RENDERED**  
SCALE: 1/8" = 1'-0"

**schwerdt design group**  
architecture | interiors | planning  
2231 sw wasmaker rd. suite 303  
topeka, kansas 66614-4275  
phone: 785.273.7540  
fax: 785.273.7579  
500 north broadway. suite 200  
oklahoma city, ok 73102  
phone: 405.231.3105  
fax: 405.231.3115

**PROGRESS PRINT**  
NOT FOR CONSTRUCTION  
DATE: 00/00/00

**CORE & SHELL BUILDING**  
**STREETS OF WEST PRYOR LOT 13**  
1020 NW PRYOR ROAD, LEES SUMMIT, MISSOURI

SUBMISSION DATES  
PROGRESS PRINT ONLY

SHEET TITLE  
EXTERIOR ELEVATIONS  
RENDERED

PROJECT NUMBER  
**235008**

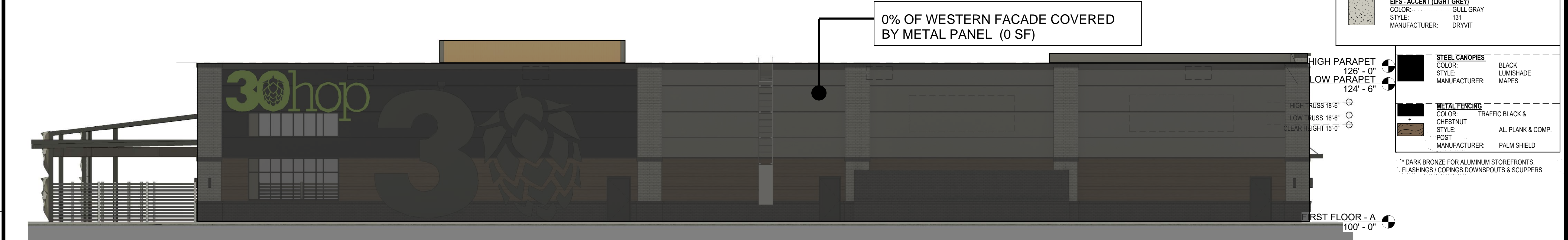
SHEET NUMBER  
**A-901**

FILEPATH: F:\1\_P\Projects\SDG\235008\_SOWP Lot 13\05\_Drawings - Working\Revit\235008\_SOWP Lot 13\_V23.rvt  
 DATE: 8/4/2023 6:43:49 PM  
 DRAWN BY: Author



**D1 EAST ELEVATION RENDERED**  
SCALE: 1/8" = 1'-0"

EXTERIOR MATERIALS	
	<b>BRICK VENEER (DARK GREY)</b> COLOR: COAL CREEK STYLE / MORTAR: TBD MANUFACTURER: MUTUAL MATERIALS
	<b>BRICK VENEER (LIGHT GREY)</b> COLOR: HARBOR MIST STYLE / MORTAR: TBD MANUFACTURER: MUTUAL MATERIALS
	<b>METAL PANEL</b> COLOR: COPPER PENNY STYLE: REVEAL PANEL MANUFACTURER: PAC CLAD
	<b>WOOD / FIBER CEMENT SIDING</b> COLOR: TBD STYLE: CEDAR PLANK MANUFACTURER: JAMES HARDIE
	<b>PRE-FINISHED METAL</b> COLOR: MATTE BLACK STEEL STYLE: TBD MANUFACTURER: PAC CLAD
	<b>EIFS - MAIN (CHARCOAL)</b> COLOR: ANTHRACITE COAL STYLE: 152 MANUFACTURER: DRYVIT
	<b>EIFS - ACCENT (LIGHT GREY)</b> COLOR: GULL GRAY STYLE: 131 MANUFACTURER: DRYVIT
	<b>STEEL CANOPIES</b> COLOR: BLACK STYLE: LUMISHADE MANUFACTURER: MAPES
	<b>METAL FENCING</b> COLOR: TRAFFIC BLACK & CHESTNUT STYLE: AL. PLANK & COMP. POST MANUFACTURER: PALM SHIELD



**C1 WEST ELEVATION RENDERED**  
SCALE: 1/8" = 1'-0"



**A1 NORTH ELEVATION RENDERED**  
SCALE: 1/8" = 1'-0"

**A3 SOUTH ELEVATION RENDERED**  
SCALE: 1/8" = 1'-0"

**schwerdt design group**  
architecture | interiors | planning  
2231 sw wansmaker rd. suite 303  
topeka, kansas 66614-4275  
phone: 785.273.7540  
fax: 785.273.7579  
500 north broadway. suite 200  
oklahoma city, ok 73102  
phone: 405.231.3105  
fax: 405.231.3115

**PROGRESS PRINT**  
NOT FOR CONSTRUCTION  
DATE: 00/00/00

**CORE & SHELL BUILDING  
STREETS OF WEST PRYOR LOT 13**  
1020 NW PRYOR ROAD, LEES SUMMIT, MISSOURI

SUBMISSION DATES  
PROGRESS PRINT ONLY

SHEET TITLE  
EXTERIOR ELEVATIONS  
RENDERED

PROJECT NUMBER  
**235008**

SHEET NUMBER  
**A-901**

FILEPATH: F:\1\_P\Projects\SDG\235008\_SOWP Lot 13\05\_Drawings - Working\Revit\235008\_SOWP Lot 13\_V23.rvt  
DATE: 7/27/2023 11:13:38 AM  
DRAWN BY: Author

MAPES - BLACK ALUMINUM CANOPY



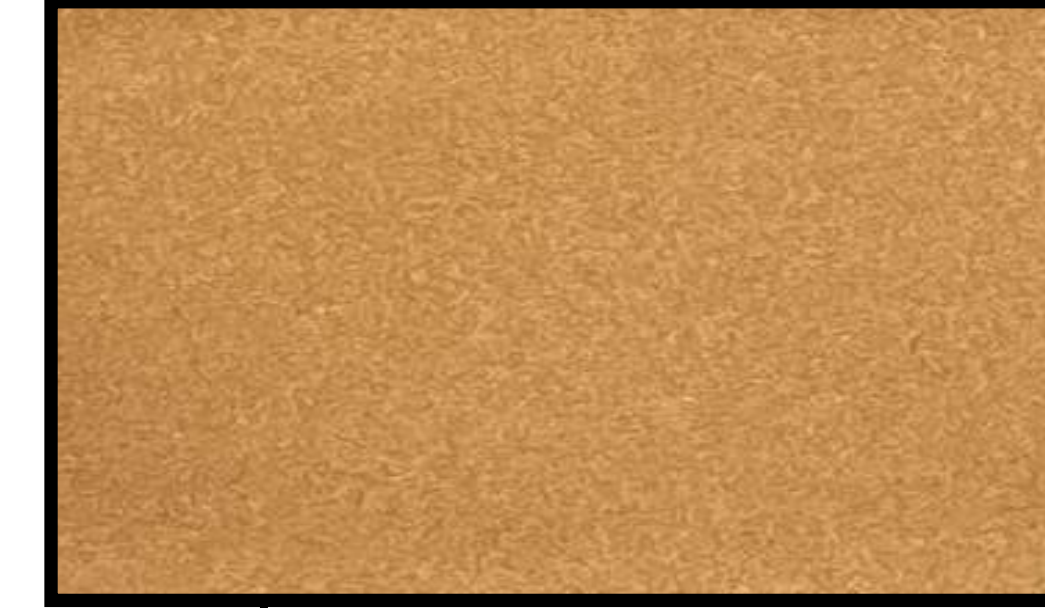
DRYVIT - GULL GRAY



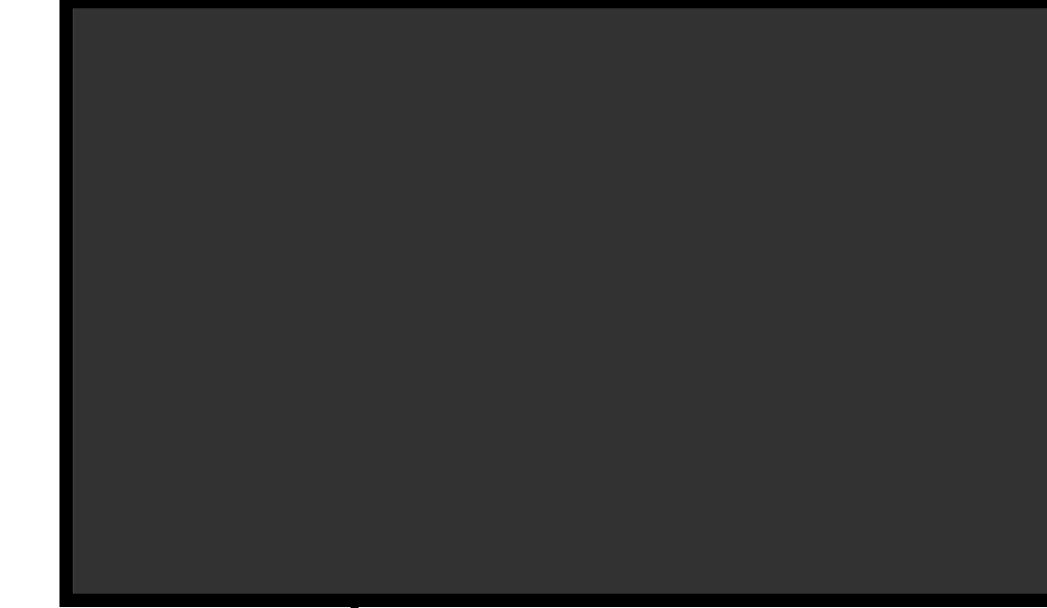
DRYVIT - ANTHRACITE COAL



PAC CLAD - COPPER PENNY



PAC CLAD - MATTE BLACK STEEL



MUTUAL MATERIALS - HARBOR MIST  
\*GROUT HAS NOT BEEN DETERMINED



MUTUAL MATERIALS - COAL CREEK  
\*GROUT HAS NOT BEEN DETERMINED



JAMES HARDIE - TIMBER BARK PLANK



MANKO - 2" X 4 1/2" EXTRA DARK ANODIZED STOREFRONT



GREEN SCREEN - BLACK WIRE MESH

PHOTO MATERIALS BOARD