



FREE  
ICE

**Twice the ICE**  
ICE HOUSE AMERICA

1105

ICE

\$2.00

**Twice the ICE**  
ICE HOUSE AMERICA

FOR ICE  
COIN RETURN  
COIN RETURN

16 LB. BAG  
PLEASE USE  
THE COIN RETURN

FILTERED WATER

16 LB. BAG  
20 LB. BAG

PLEASE  
USE THE  
COIN RETURN

**FF ICE**  
WHEN BLUE LIGHT IS ON  
LIMIT TWO PER CUSTOMER

**TWICE AS THE ICE**  
ICE HOUSE AMERICA  
www.twiceice.com

**1105**

HEALTHWISE ICE & WATER  
FILTRATION PROCESS  
ASIA FILTRADA

ICE  
FREEZE  
SMILE  
YOU'VE WON  
A CAMERA

**FILTERED WATER**  
ASIA FILTRADA

**ATTENTION**  
FOR YOUR  
SAFETY  
USE CLEAN  
CONTAINER

**WHEN ICE  
DROPS INTO  
CUTS  
FILL  
HANDS  
FORWARD**

**PLACE  
COOLER  
UNDER  
CUTS**

**16 LB. BAG**  
FULL OF ICE  
WILL FALL OUT HERE

**PLEASE  
DON'T BE A  
LITTERBUG**  
MAKE YOUR TRASH  
WITH YOU

1 2 3 4

SELECT

PAY

1.00 2.00 3.00 4.00

1 2 3 4

SELECT

PAY

1.00 2.00 3.00 4.00

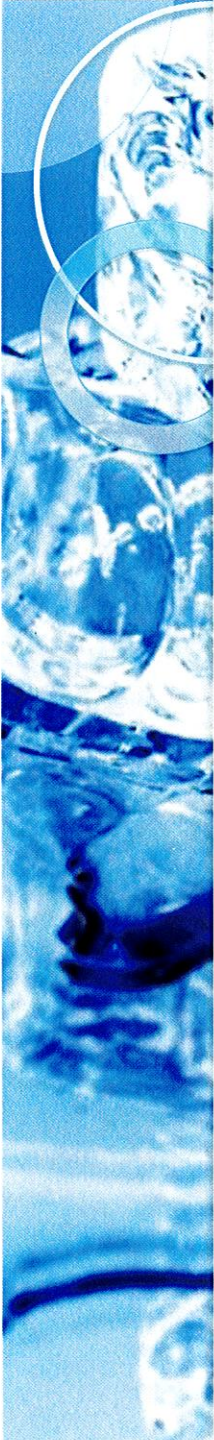
SELECT

1 2 3 4

ICE

PAY

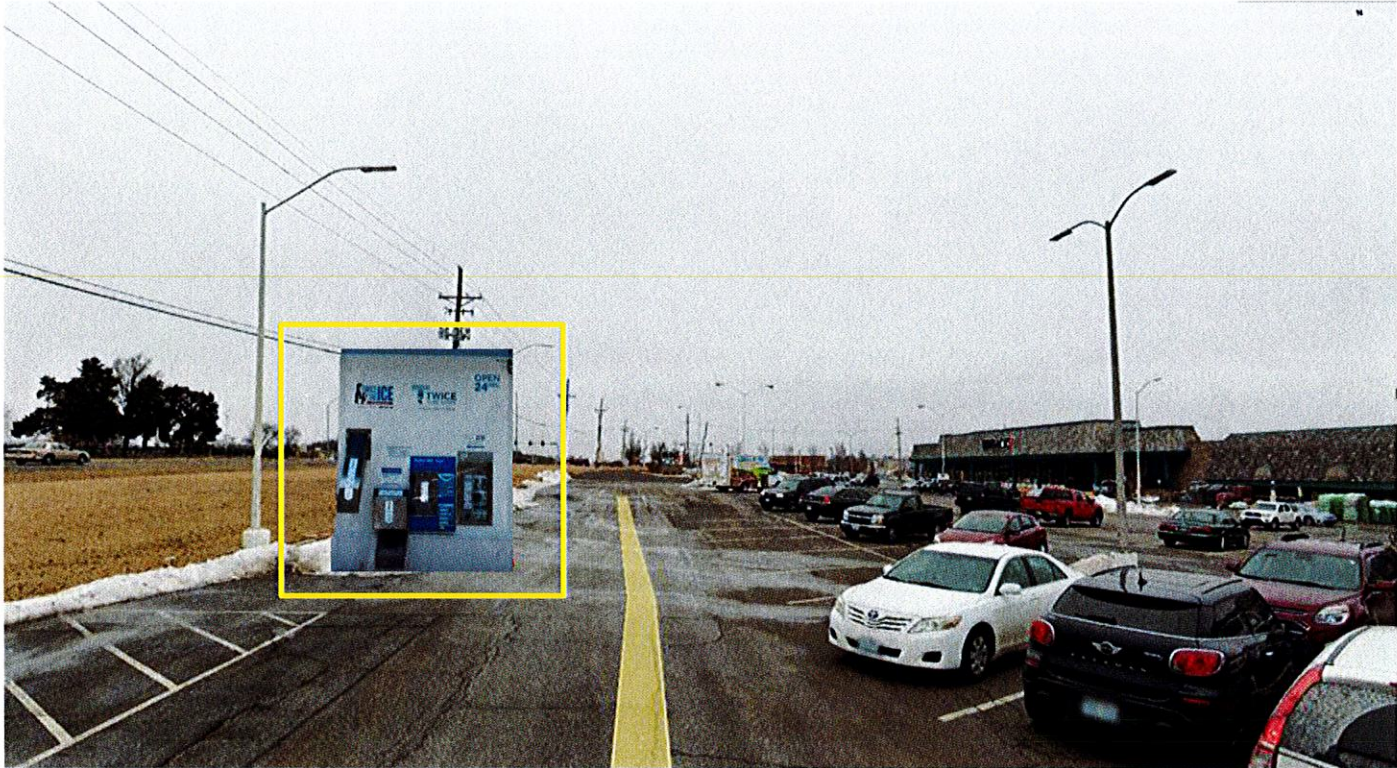
1.00 2.00 3.00 4.00

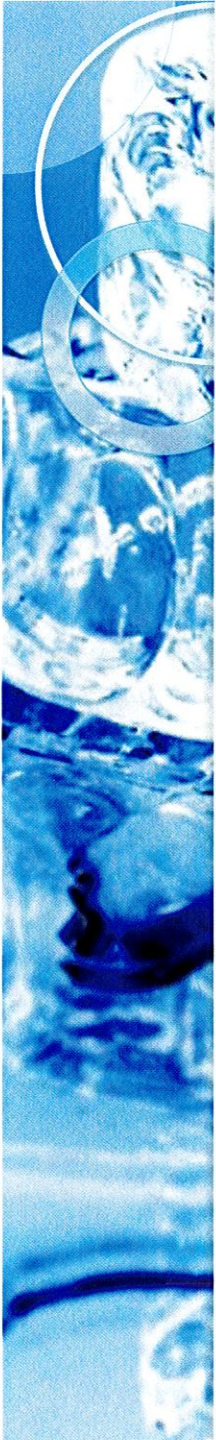


# UNIT PLACEMENT



ICE HOUSE AMERICA





# THE ICE HOUSE



ICE HOUSE AMERICA



## National Classification:

- NAMA Certified (National Automatic Merchandising Association) and approved as a vending machine.
- Meets FDA regulations on food safety
- BBB rating of A+

## Products sold from House:

- Ice Vending (20 lb. bag, and 20 lb. bulk)
- Water Vending (20 Oz, 1, 3 and 5 gal Filtered Water)
- Dimensions: 8' 4" W x 24' D x 10' H (Under 202 sq. ft.)

## Utility Requirements

- Power Requirement: 98A @ 208-240/60/3
- Power Consumption: 300 KWH per 6,500 lbs.
- Water Consumption: 783 Gal. per 6,500 lbs.

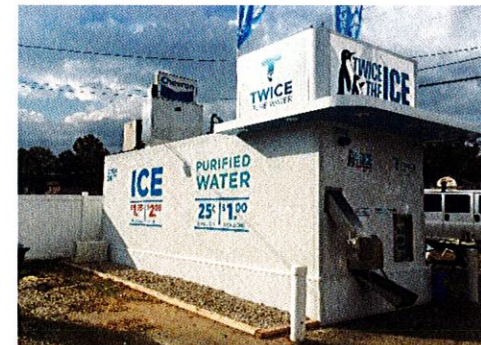
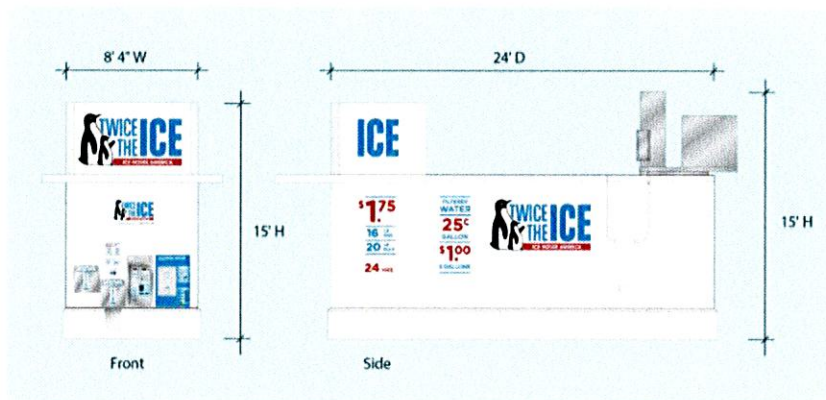




# THE ICE HOUSE



ICE HOUSE AMERICA



## Ice Kiosk Owner Responsibilities:

- Maintain the ice vending machine
- Make sure the site stays clean

## Property Owner Responsibilities

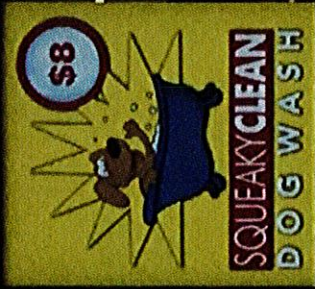
- Provide clear access to the machine
- Provide kiosk owner map of site (possibly utility locations)





CREDIT CARDS ACCEPTED

**\$8**  
**SQUEAKY CLEAN  
DOG WASH**



**10 lbs \$1**  
**ICE!**  
**20 lbs \$2**



24 hour | ICE

**WE SELL  
ICE!  
10 LB. BAG \$1.00**

**WE SELL  
ICE!  
20 LB. BAG \$2.00**



Everything's \$1

Everything's \$1

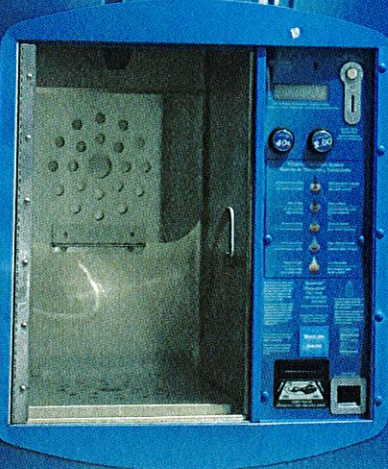
RESERVED  
PARKING



\$50 TO \$300  
FINE

40¢  
Bottle Your Own Water and Save!

Glacier  
Water.



water

U.S. PRESS