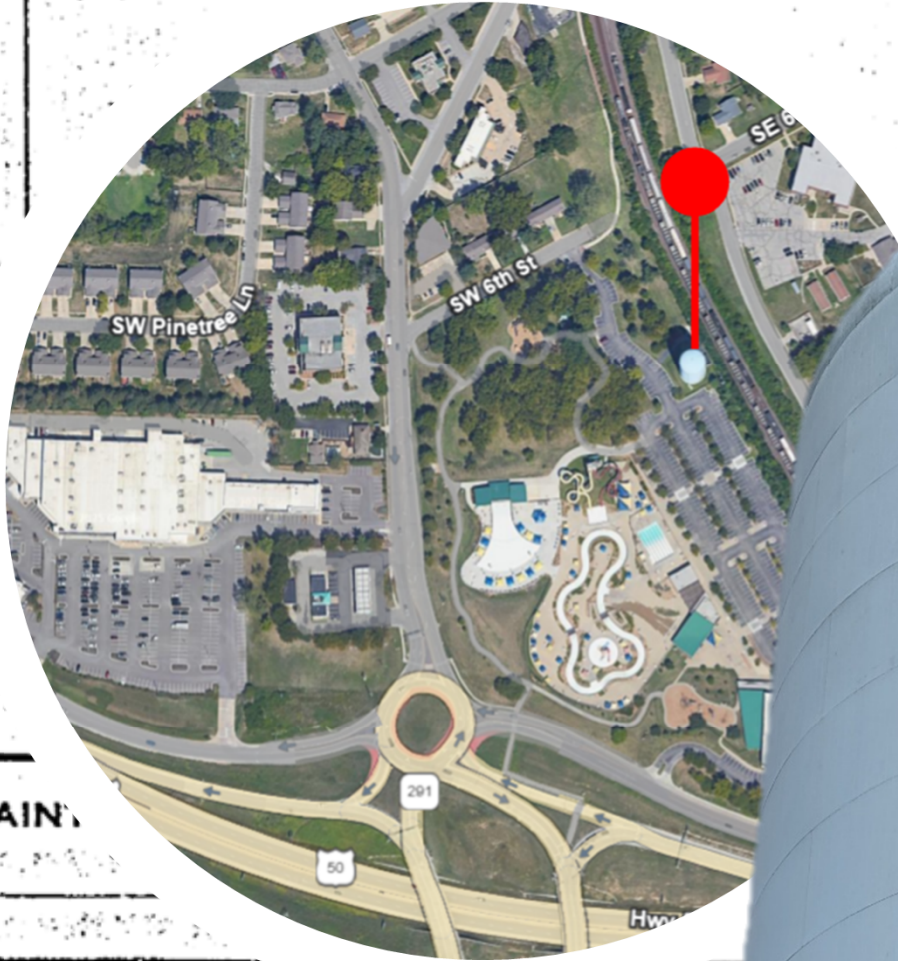


HARRIS PARK STANDPIPE DEMOLITION

May 12th, 2025 | Public Works Committee



LEE'S SUMMIT

ORIENTATION PLAN

THE DARBY CORP. PRODUCTS OF STEEL PLATE

Harris Park Standpipe and Pump Station

605 SW Jefferson St

Built: 1960

Capacity: 2.15 MG

Height: 135 ft

*Out of service since 2011

PAIN

SUBMIT. FOR APPRO. PRINTS

FIRST

3

9

SECOND

THIRD

FINAL

6

SHOP & FIELD

8

Standpipe and Pumping Station



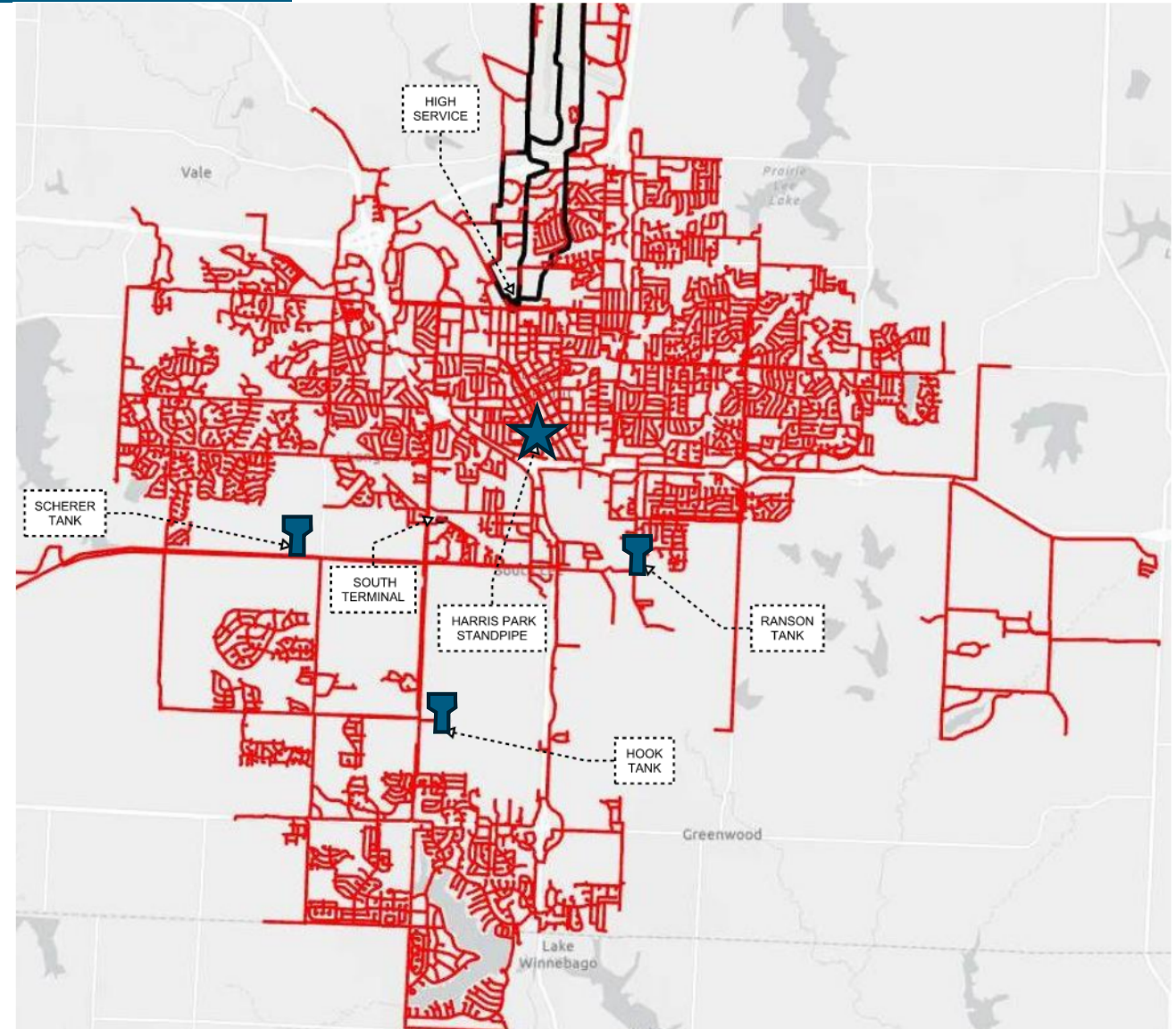
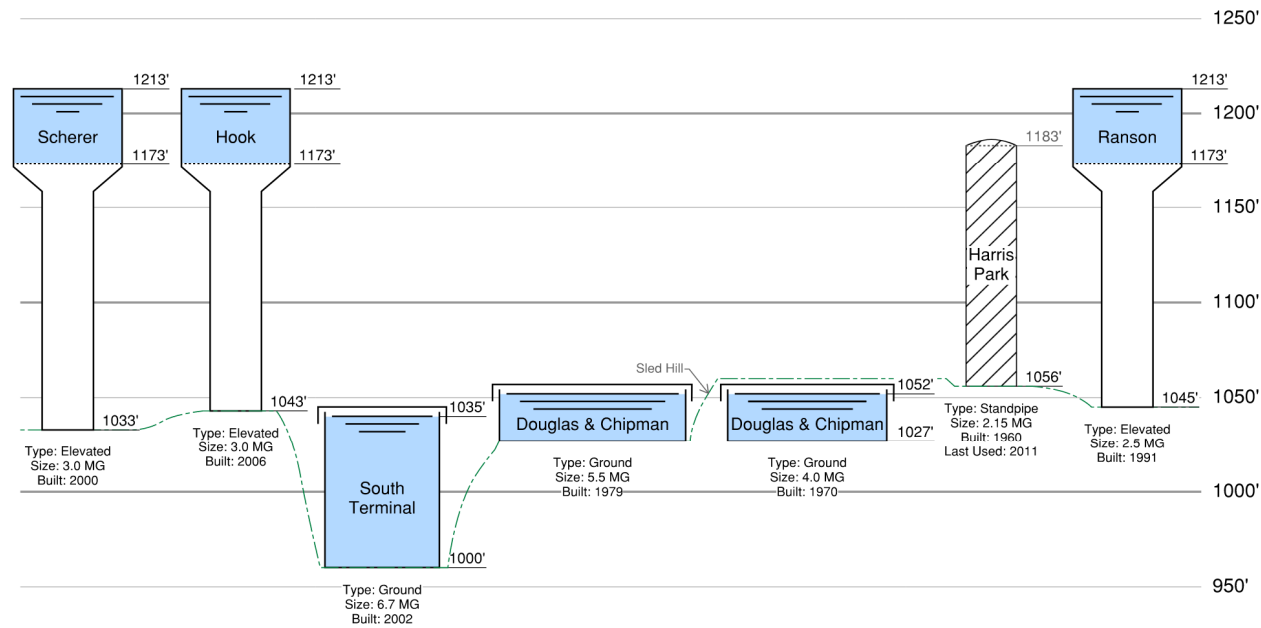
Background



- Built in 1960
- Served the south system as an elevated ground storage tank until the Ranson Tower was built in 1991

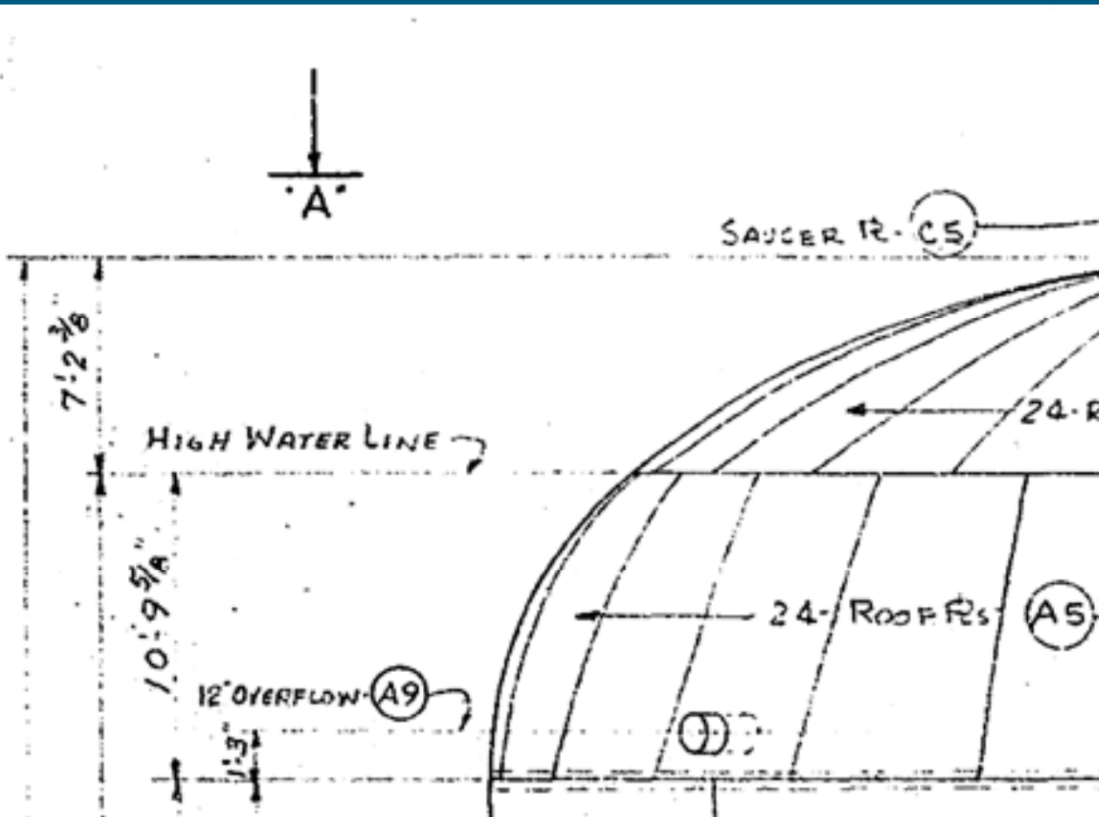
South Zone System

- Harris Park standpipe last used in 2011



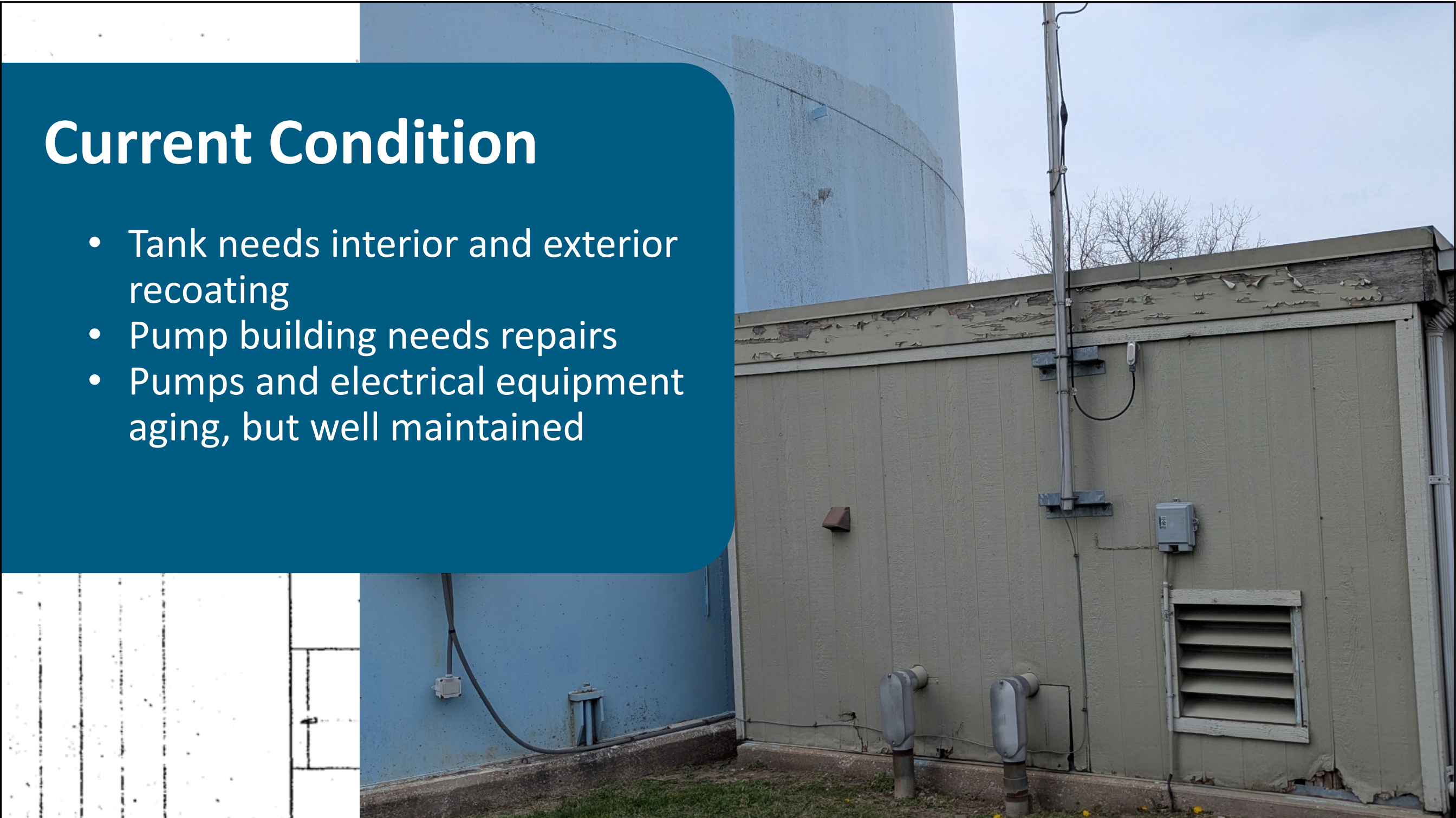
Harris Park Standpipe

- 2023 Water Master Plan recommended demolition
 - After 1991, only used in summer for peak demands
 - Out of service since 2011
 - Cost to maintain is high

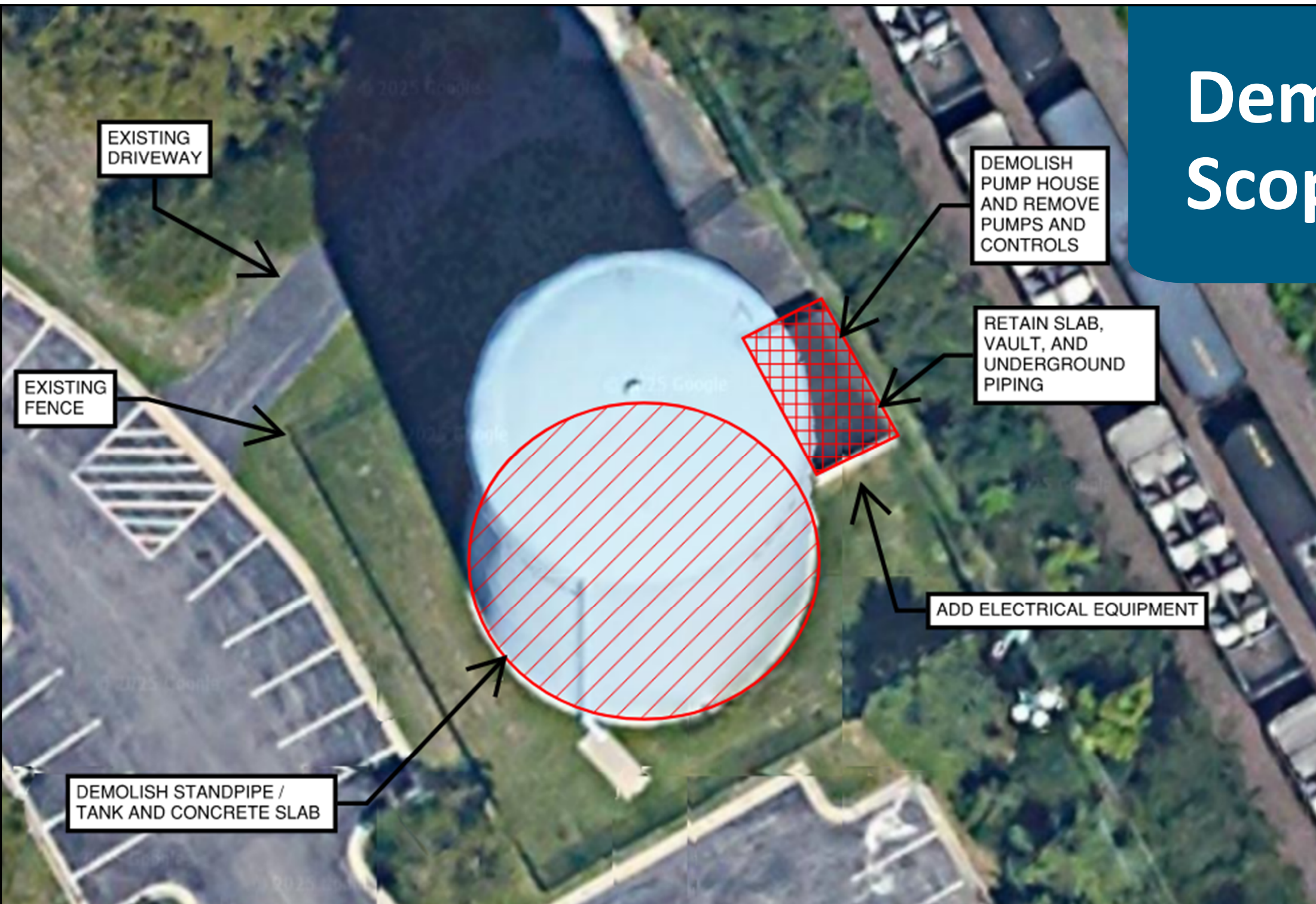


Current Condition

- Tank needs interior and exterior recoating
- Pump building needs repairs
- Pumps and electrical equipment aging, but well maintained

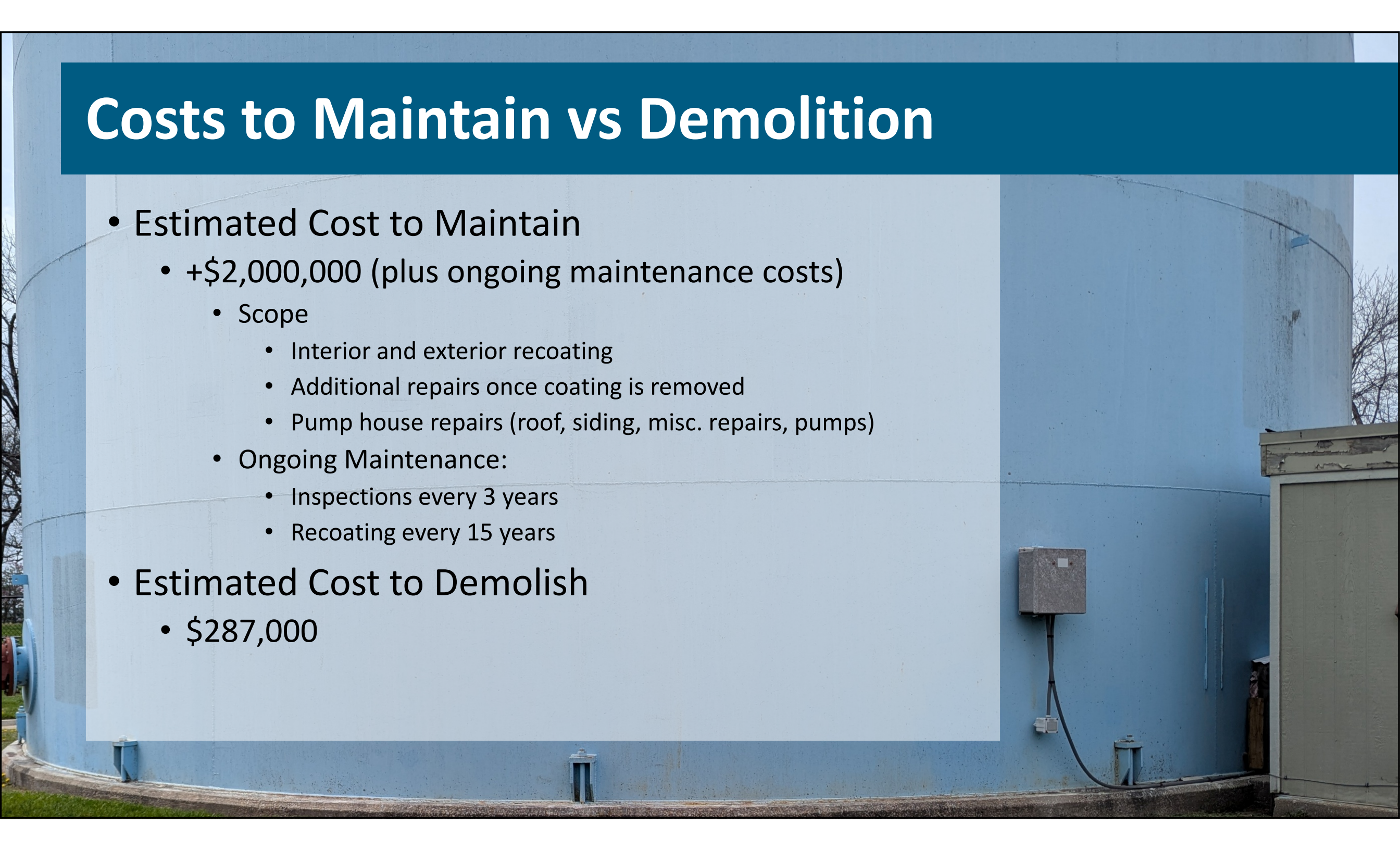


Demolition Scope

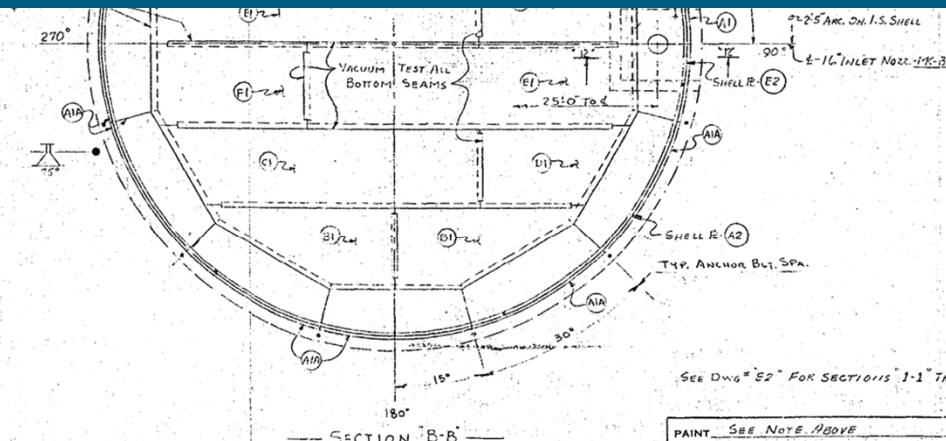
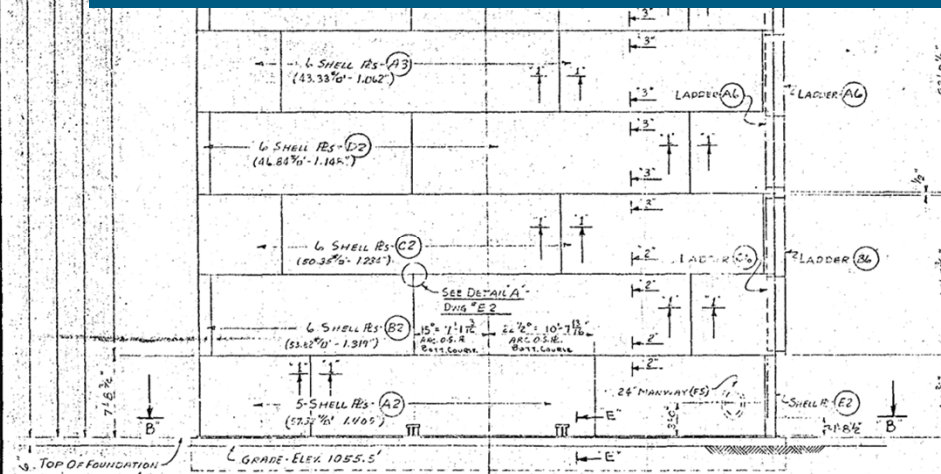
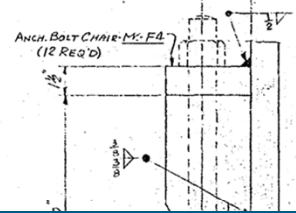
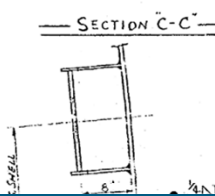
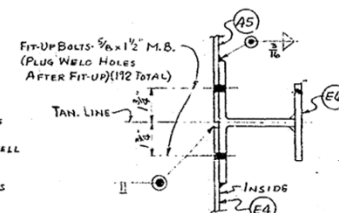
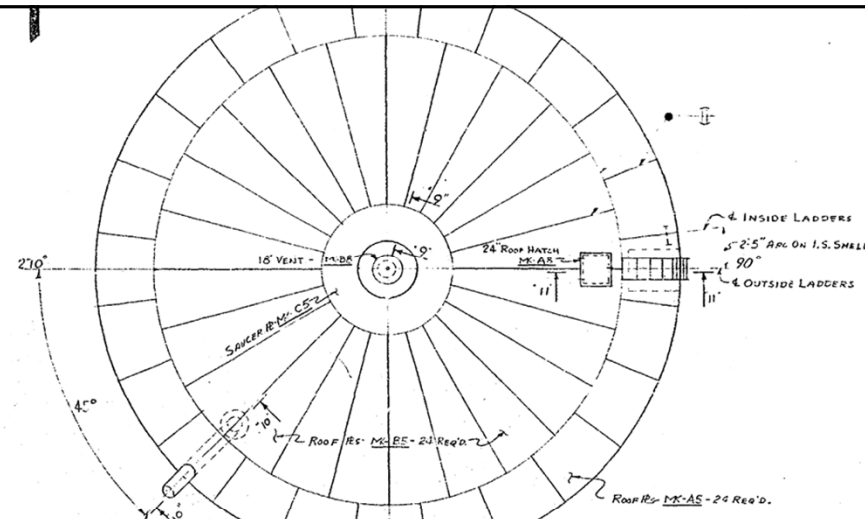
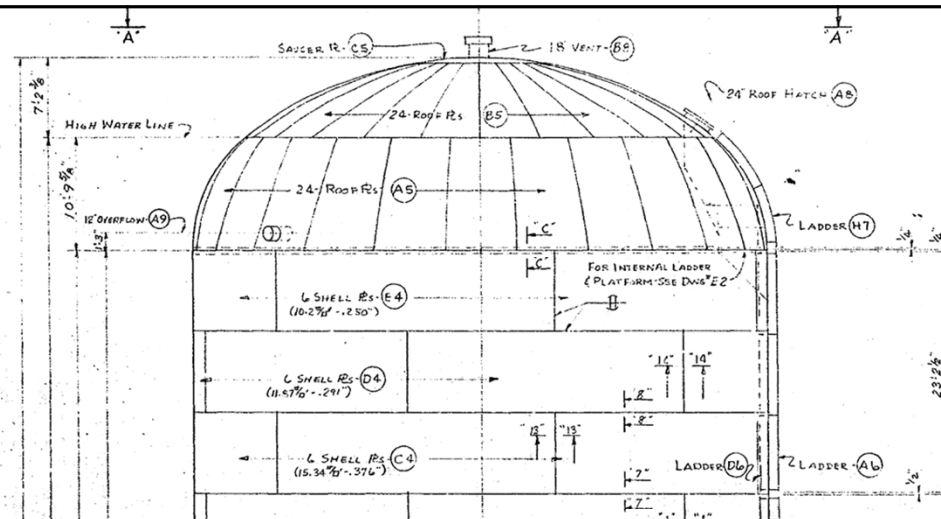


Costs to Maintain vs Demolition

- Estimated Cost to Maintain
 - +\$2,000,000 (plus ongoing maintenance costs)
 - Scope
 - Interior and exterior recoating
 - Additional repairs once coating is removed
 - Pump house repairs (roof, siding, misc. repairs, pumps)
 - Ongoing Maintenance:
 - Inspections every 3 years
 - Recoating every 15 years
- Estimated Cost to Demolish
 - \$287,000



Thank you!



SECTION G-G

NOTE:
ALL VERTICAL SEAMS TO HAVE FIRST PASS BACK-GROUGED TO SOUND METAL BEFORE APPLYING FIRST PASS ON OPPOSITE SIDE. ALL HORIZ. SEAMS TO BE ARC-GROUGED FOR A DISTANCE OF 3" ON BOTH SIDES OF INTERSECTION WITH VERTICAL SEAMS FOR 100% WELD PENETRATION.
PAINT - ALL INTERIOR ABRADED SURFACES TO BE GIVEN A PATCH COAT OF ZINC DUST ZINC OXIDE PAINT-60% SPEC MIL-P-13145 A OR APPROVED EQUAL AND ONE COMPLETE COAT OF THE SAME PAINT ON ENTIRE INTERIOR SURFACES.
ALL EXTERIOR ABRADED SURFACES TO BE GIVEN A PATCH COAT OF FED. SPEC TT-P-8LD TYPE II RED LEAD PAINT OR APPROVED EQUAL. ALL EXT. PRIMED SURFACES TO BE GIVEN TWO FULL COATS OF SOCONY PAINT PRODUCTS CORR. ALUMICOLOR MEDIUM BLUE 44-A-L OR APPROVED EQUAL. PRUSSIAN BLUE PASTE TO BE ADDED TO THE FIRST COAT OF ALUMINUM TO DISTINGUISH IT FROM THE SECOND COAT.

SEE DWG E2 FOR SECTIONS 1-1 THRU 13-13

PAINT	SEE NOTE ABOVE
SUBMIT FOR APPR	PRINTS
DATE	REFERENCE DRAWINGS

THE DARBY CORPORATION	
HARRY DARBY, CHAIRMAN KANSAS CITY, KANSAS	
MANUFACTURERS	FABRICATORS
CUSTOMER: CITY OF LEE'S SUMMIT, MISSOURI	