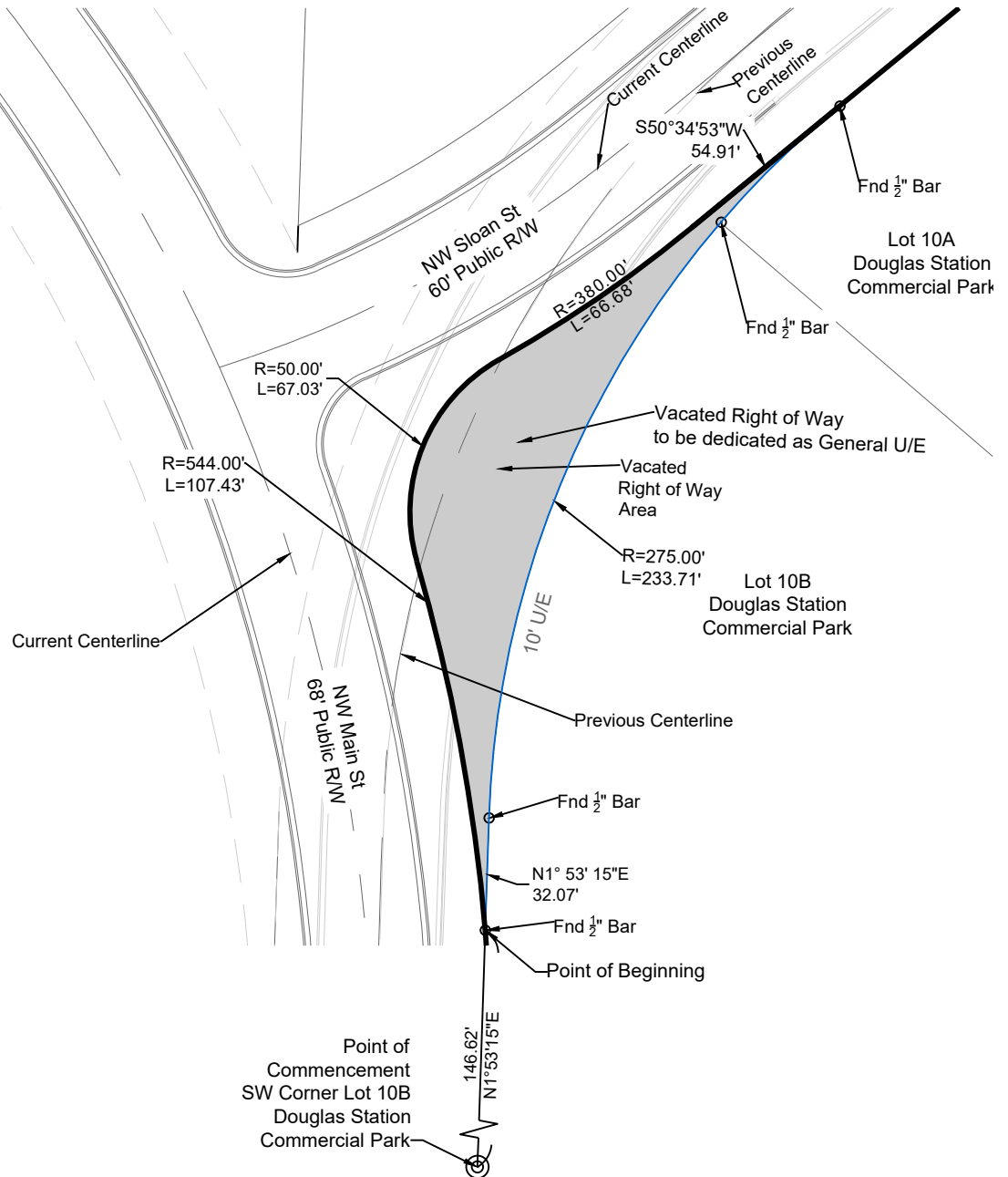


Prepared By:
Matthew J. Schlicht
PLS-2012000102



Legal Description

A tract of land being located in Section 31, Township 48, Range 31 in Lee's Summit, Jackson County, Missouri, being more particularly described as follows:



Commencing at the Southwest corner of Lot 10B of Douglas Station Commercial Park, a subdivision in said Lee's Summit Recorded as Document No. 2008E0087576; thence N1° 53' 15"E, along the West line of said Lot 10B, a distance of 146.62 feet to the Point of Beginning; thence continuing N1° 53' 15"E, a distance of 32.07 feet; thence along a curve to the right tangent to the preceding course and having a radius of 275.00 feet, an arc distance of 233.71 feet; thence S50° 34' 53"W, a distance of 54.91 feet; thence along a reverse curve having a radius of 50.00 feet, an arc distance of 67.03 feet; thence along a reverse curve having a radius of 544.00 feet, an arc distance of 107.43 feet to the Point of Beginning.

Tract contains 0.10 Acres more or less (±4408.07 square feet)

Legal Exhibit

ROW Vacation

SHEET 1 OF 1

DATE:

1/27/2025

PROJECT NUMBER:

Douglas Station

REV. TO DWG.:

N/A

SCALE:

1"=50'

R/W Vacation Exhibit

Douglas Station

Commercial Park Lot 10B

Lee's Summit, Jackson County, Missouri

ENGINEERING
ENGINEERING & SURVEYING
SOLUTIONS

50 SE 30TH STREET
LEE'S SUMMIT, MO 64082
P:(816) 623-9888 F:(816) 623-9849