

Lee's Summit City Council and Lee's Summit Parks and Recreation Board

Joint Meeting
January 14th, 2025



LEE'S SUMMIT
MISSOURI®



2024 Progress

Neighborhood Park Renovation

- \$740,000 Invested
 - Williams Grant Park
 - Lower Banner Park
 - Woods Playground
 - Wadsworth Park

Playground Surface Replacement Program

- \$540,000 Invested
 - Osage Trails Park
 - Lowenstein Park
 - Hartman Park
 - South Lea McKeighan Park
- \$1,280,000 total investment in neighborhood park improvements

Park Impact Fee

- Funding to start July 1, 2025



Highlighted Upcoming Projects





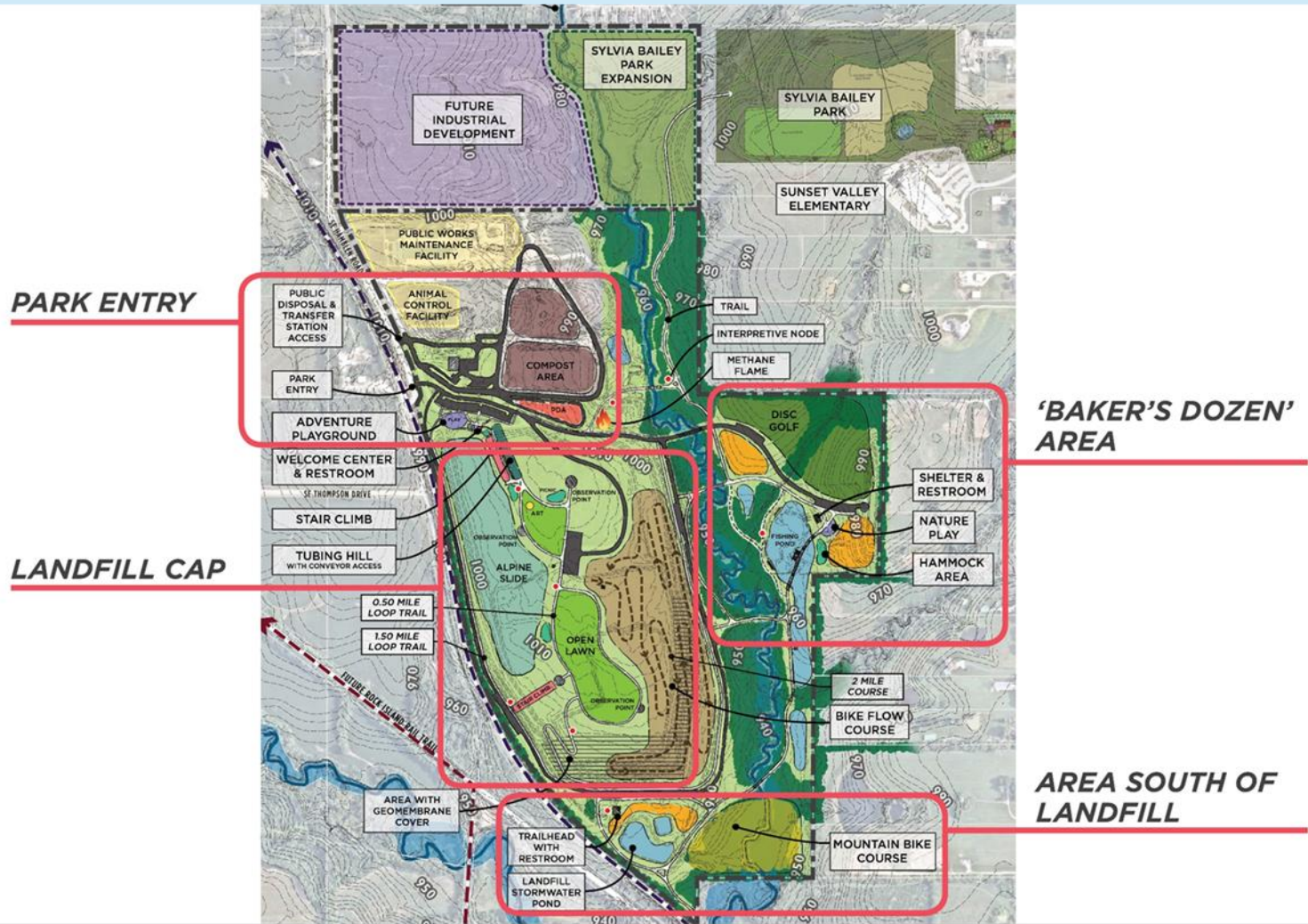
Resource Recovery Park

Discovery Phase 2020-2021

- LSPR and City Staff Introduced project concepts to MDNR
- Site tours of other landfill to parks projects across country
- Park master plan prepared and presented to MDNR June 2021
- Landmark reclamation project for the city

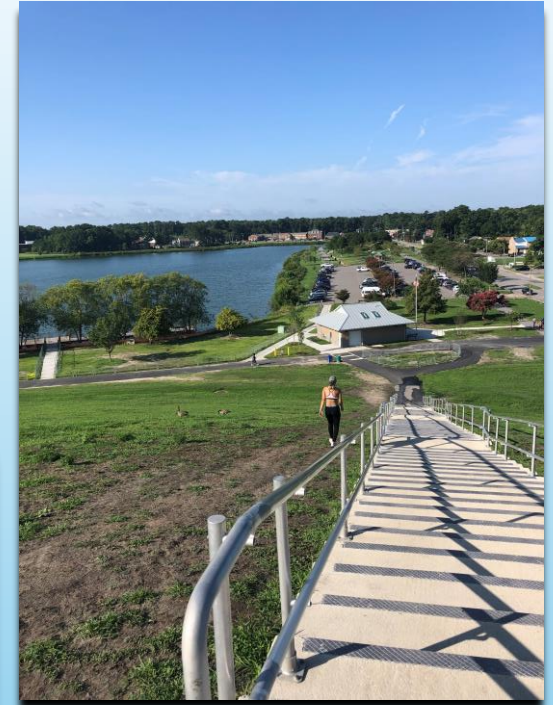


Landfill Park Planning



- LSPR selected consultants with expertise specific to the site and with parks planning
- Park amenities considered/planned on landfill and non-landfill areas
- Multi phase study with city and park staff input

Park Amenities





Next Steps

- Formalize agreement between City of Lee's Summit and LSPR
- Community Input
- Hire consulting team RFQ
- Anticipated funding from Parks CIP through FY 2032
- Additional feedback from MDNR
- Phase I planning phase anticipated start in FY27
- Seeking additional funding through partnerships and grants



Longview Master Plan and Pickleball Complex



Longview Master Plan and Pickleball Complex

- Acquired 13 acres from Metropolitan Community Colleges/Longview. Contiguous with LSPR Longview Community Center
- Finalizing Park Master Plan to include first phase development of 8-12 court pickleball complex
- Soliciting feedback from local pickleball player groups

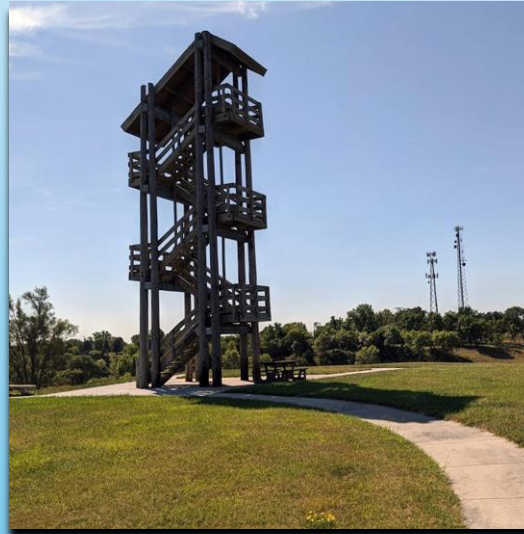
Phase One Project Details

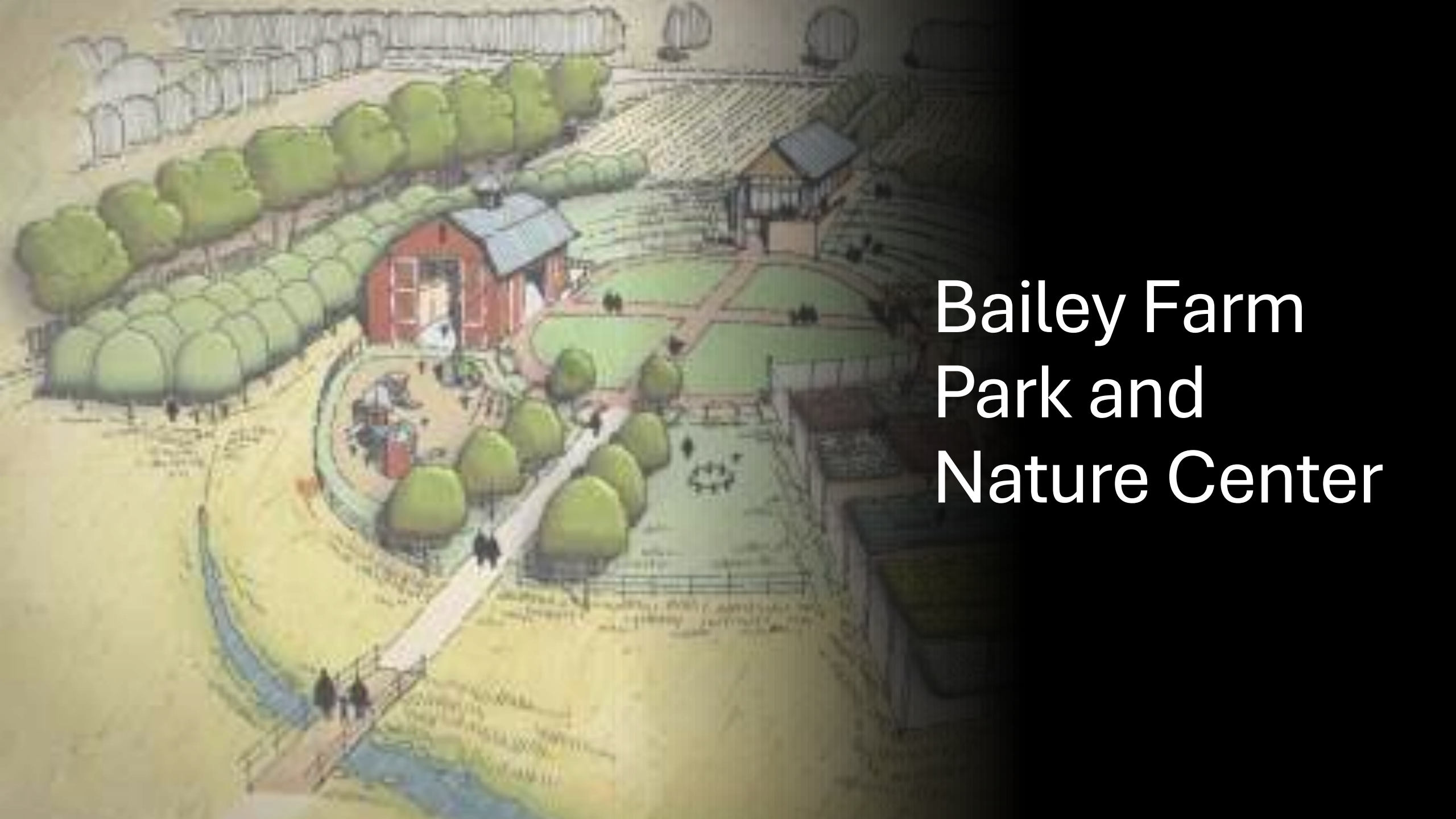
- \$1,020,000 in FY 25 Parks CIP
- Phase I
 - 8-12 pickleball courts with lighting
 - Plaza area with shade and seating
 - Fencing, landscaping, site furnishings
- Schedule
 - Anticipated to be built in Summer/Fall 2025



Future Park Development at Longview

- Large Destination Playground
- Park Pavilion and Restrooms
- Walking trails
- Interpretive areas
- Scenic lookout tower
- ADA parking improvements





Bailey Farm Park and Nature Center

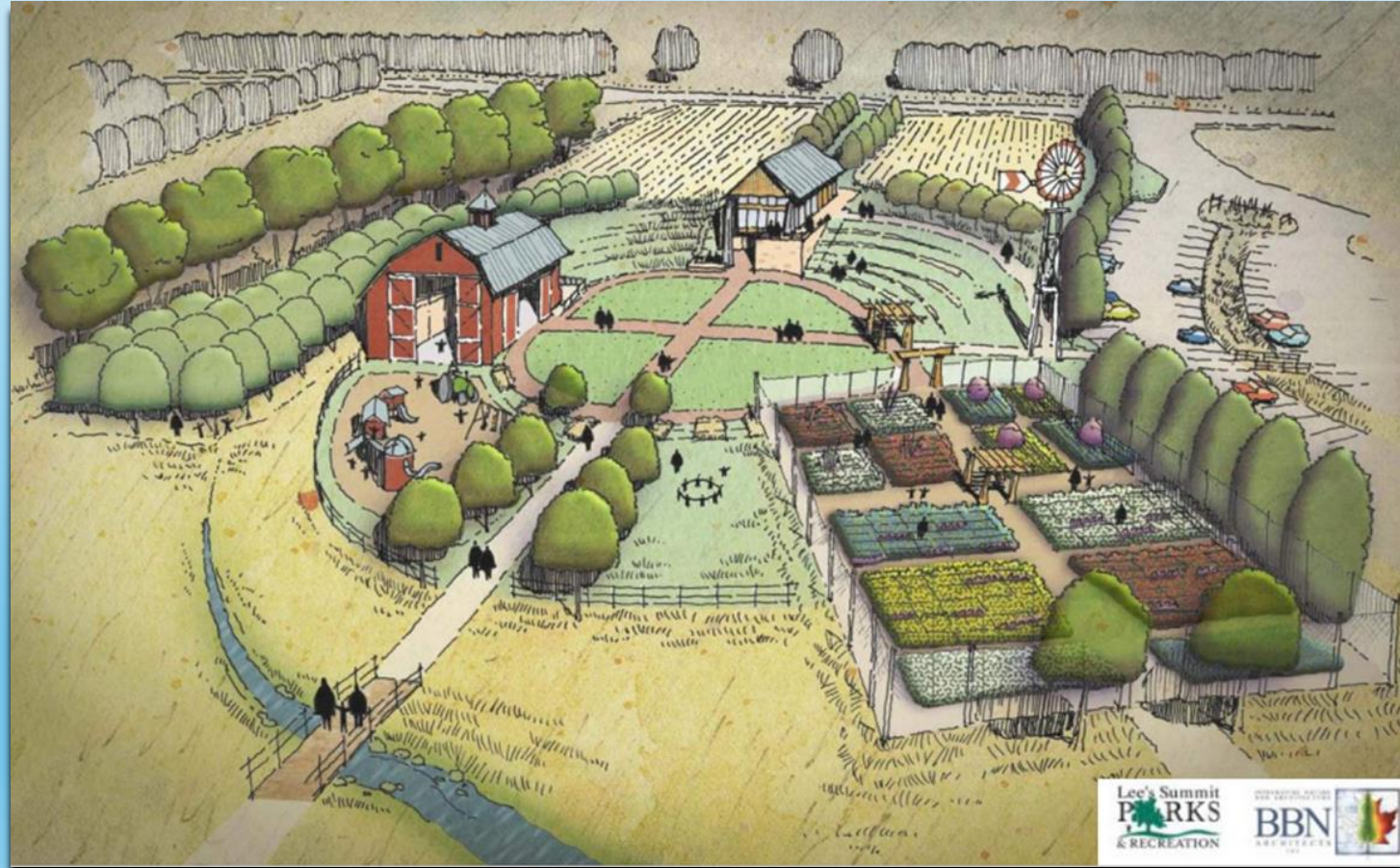
Background

- In 2000, Bailey family donated 49.6 acres on Ranson Road to LSPR
- The property had been part of the Bailey Farm, one of the oldest in the area.
- A Park Master Plan was prepared in 2016 which Included a visitors center, display gardens, events space (Barn), playground, trails, and interpretive areas
- Community Gardens with 48 plots were built in 2016

Funding and Schedule

- \$7,500,000 in Parks CIP through FY 28
- Update master plan and designs beginning mid 2025
- Construction to begin in 2026
- Seeking partner/donation to realize full plans

Bailey Farm Park and Nature Center



Bailey Farm Park Master Plan



PRACTICE FIELDS:

- Turf improvements and modest grading required
- Shelter structures



FALL FESTIVAL SPACE:

- Open area available for current seasonal programming.



OUTDOOR CLASSROOM:

- Informal seating under existing canopy around improved pond/wetland



CIRCULATION:

- Expanded parking lot: +/- 100 spaces
- Pedestrian Trail: Limestone screenings
- Improved Pedestrian Bridge



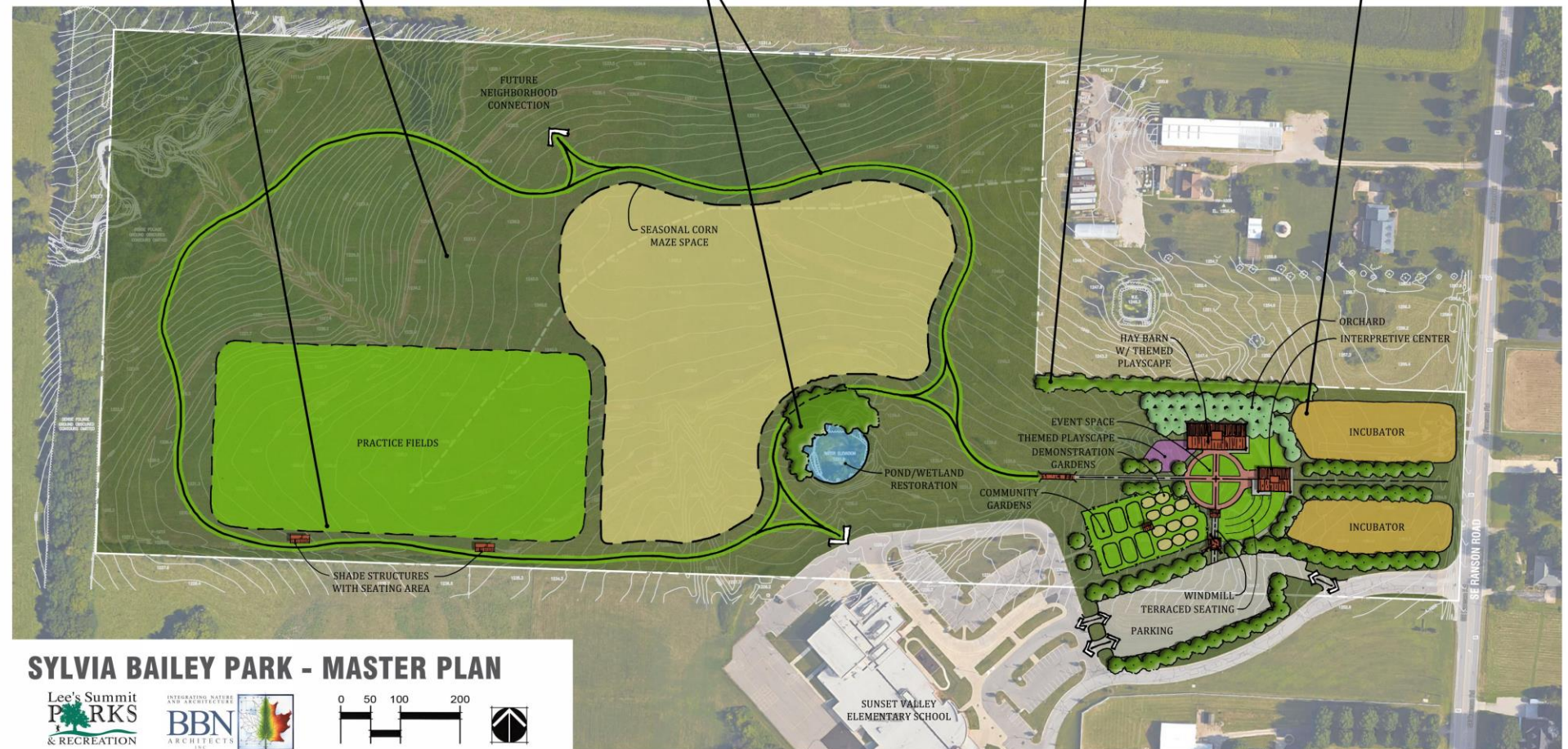
HEDGE ROW:

- Osage Orange or Cottonwood

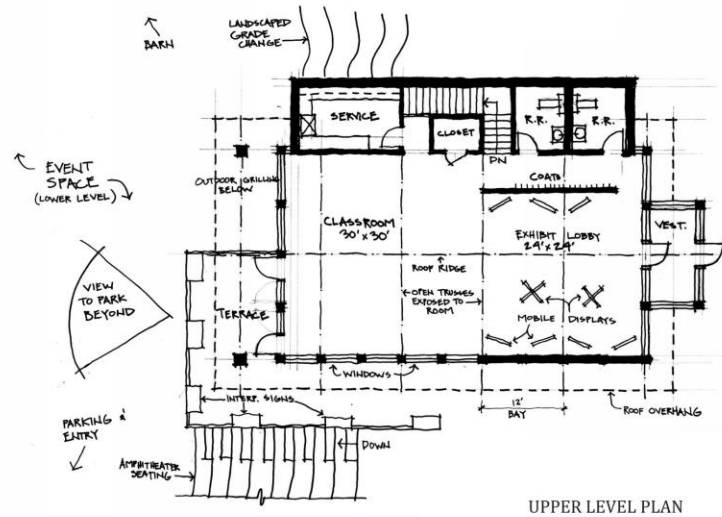
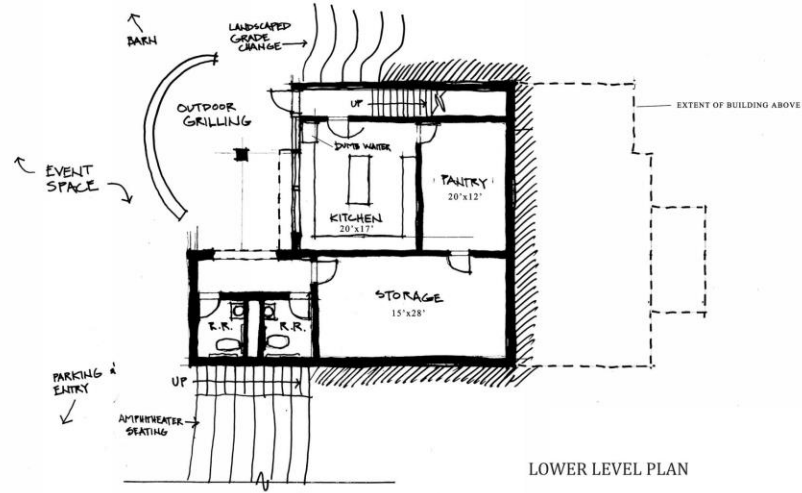


INCUBATOR SPACE:

- Could be used to demonstrate past, present, and future farming techniques.
- Plots could be leased, (similar to community gardens).
- Opportunity for vineyard



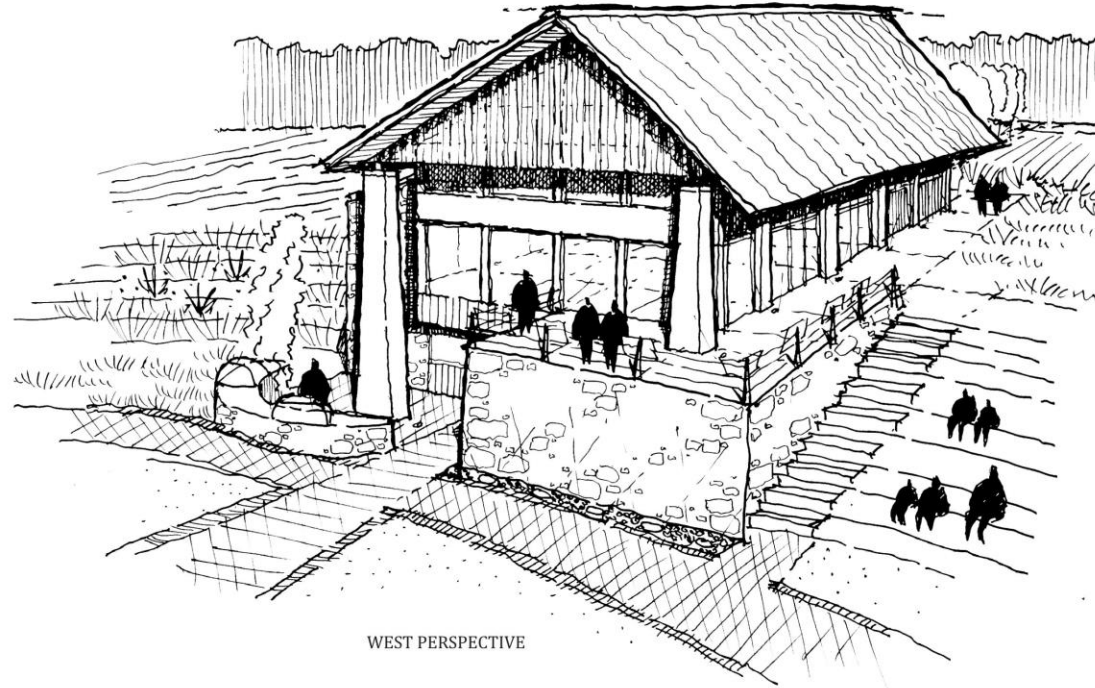
Bailey Nature Center



INTERPRETIVE DISPLAYS



INTERIOR CHARACTER



SYLVIA BAILEY PARK - INTERPRETIVE CENTER



Safety Town

- \$1,000,000 in funding in FY 26
- Begin site selection and site planning Spring 2025
- Indoor and outdoor venue
- Life Safety Skills for school age children
 - pedestrian, bicycle and traffic safety,
 - playground safety,
 - utility safety,
 - severe weather safety,
 - stranger danger,
 - 911 procedures, fire safety, and poison prevention

