

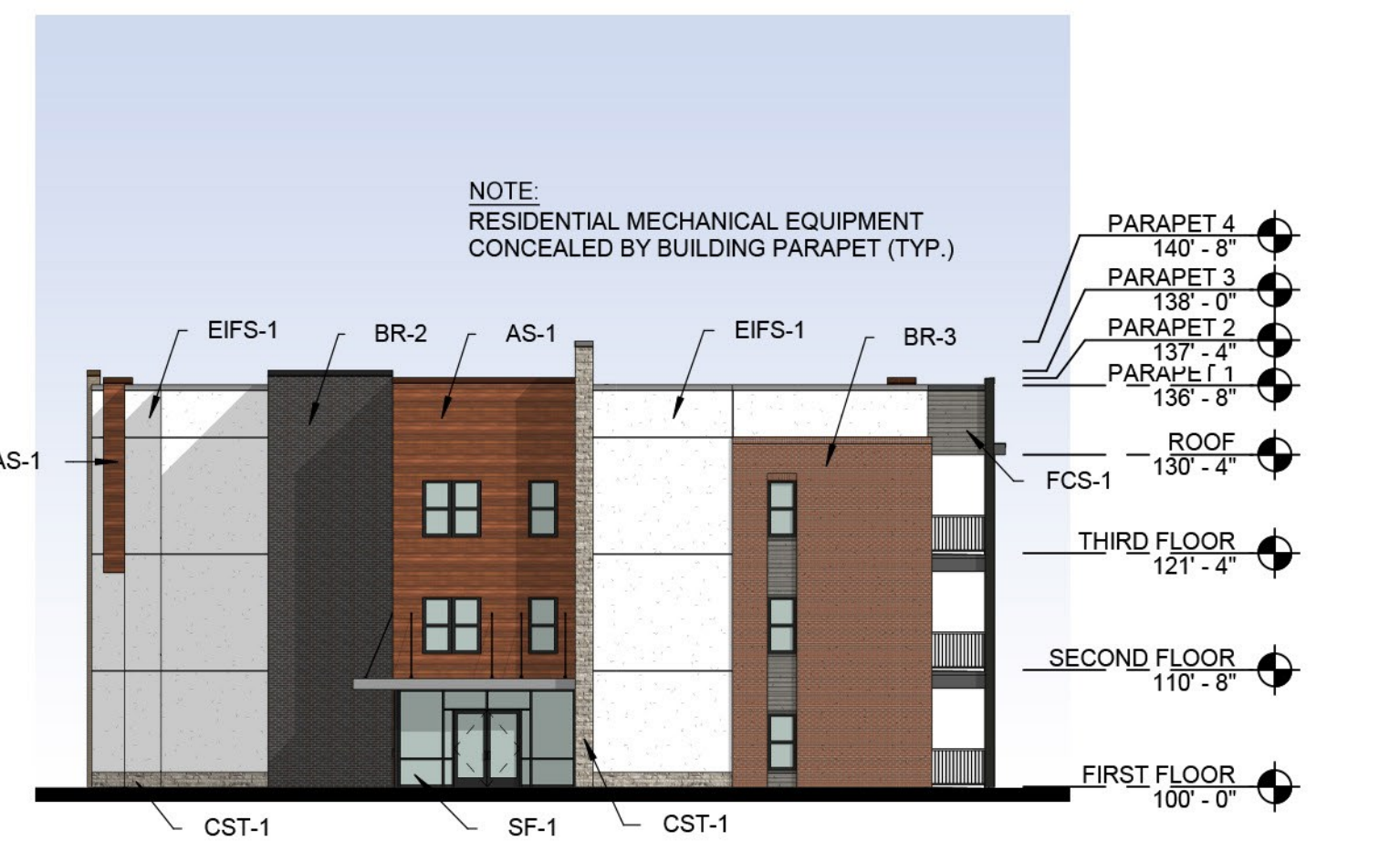
1 WEST ELEVATION (N)
0 4' 8' 16' 32'



2 WEST ELEVATION (S)



3 SOUTH ELEVATION (W)



4 SOUTH ELEVATION (E)



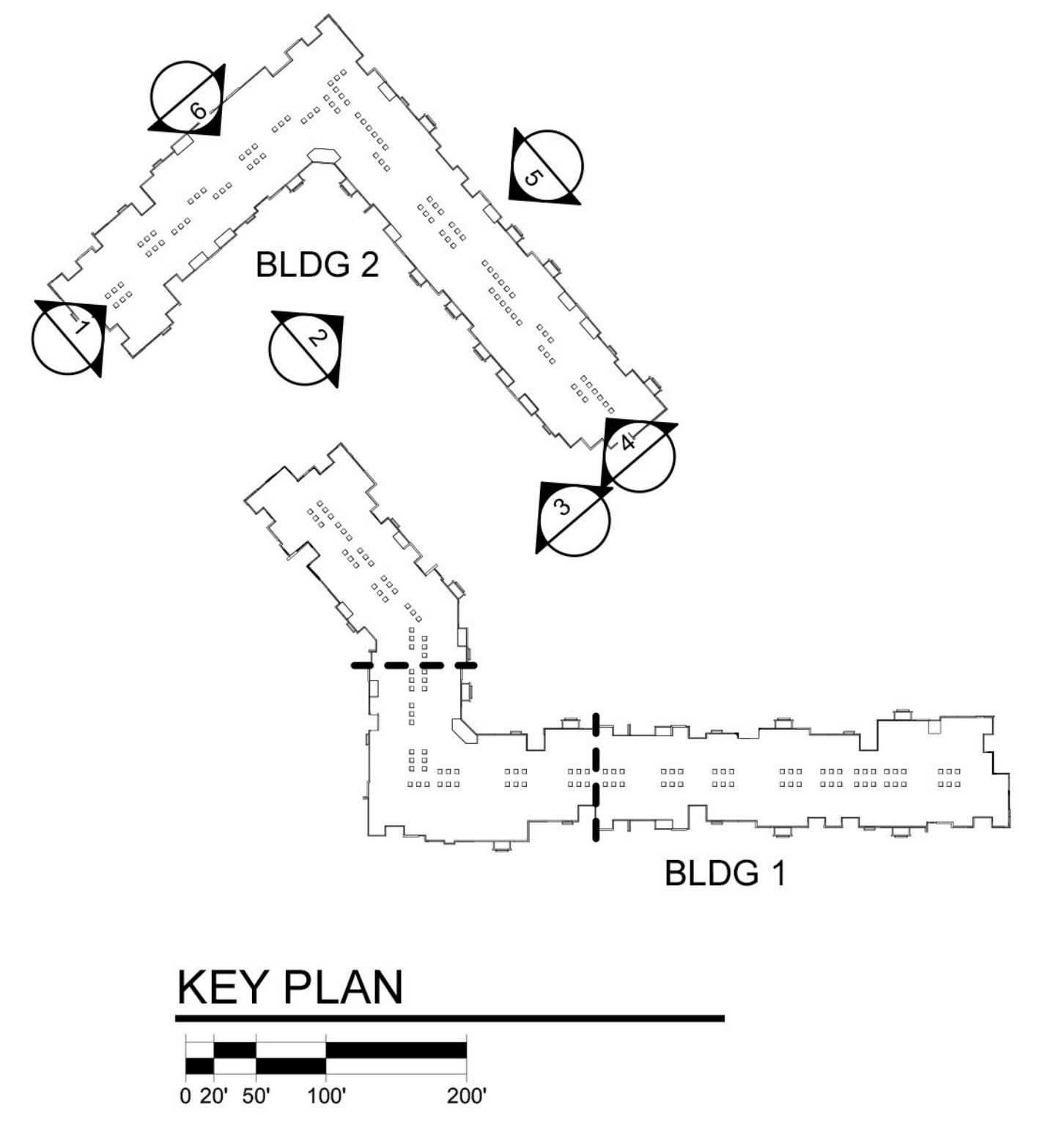
5 EAST ELEVATION



6 NORTH ELEVATION

EXTERIOR MATERIAL LEGEND

(EIFS-1)	EIFS	MER, DRYVIT, COLOR: MOONLIGHT, TEXTURE: SAND PEBBLE
(AS-1)	ALUMINUM SIDING	MER, FASTPLANK SYSTEMS, SIZE: 4" COLOR: DARK CHERRY
(FCS-1)	FIBER CEMENT SIDING	MER, JAMES HARDIE, SIZE: 9" COLOR: AGED PEWTER
(FCS-2)	FIBER CEMENT SIDING	MER, JAMES HARDIE, SIZE: 9" COLOR: IRON GRAY
(BR-1)	BRICK	MER, HEBRON, COLOR: SEA GRAY #6, SIZE: MODULAR
(BR-2)	BRICK	MER, ENDICOTT, COLOR: DARK IRONSPOT, SIZE: MODULAR
(BR-3)	BRICK	MER, ENDICOTT, COLOR: MAROON, SIZE: MODULAR, TEXTURE: SMOOTH
(CST-1)	CAST STONE	MER, EL DORADO STONE, SERIES: LEDGECUT33, COLOR: BIRCH
(SF)	STOREFRONT	COLOR: BLACK



BUILDING 2
SUMMIT at WEST PRYOR - PHASE II

LEE'S SUMMIT,
20-001

MISSOURI
11-30-2020