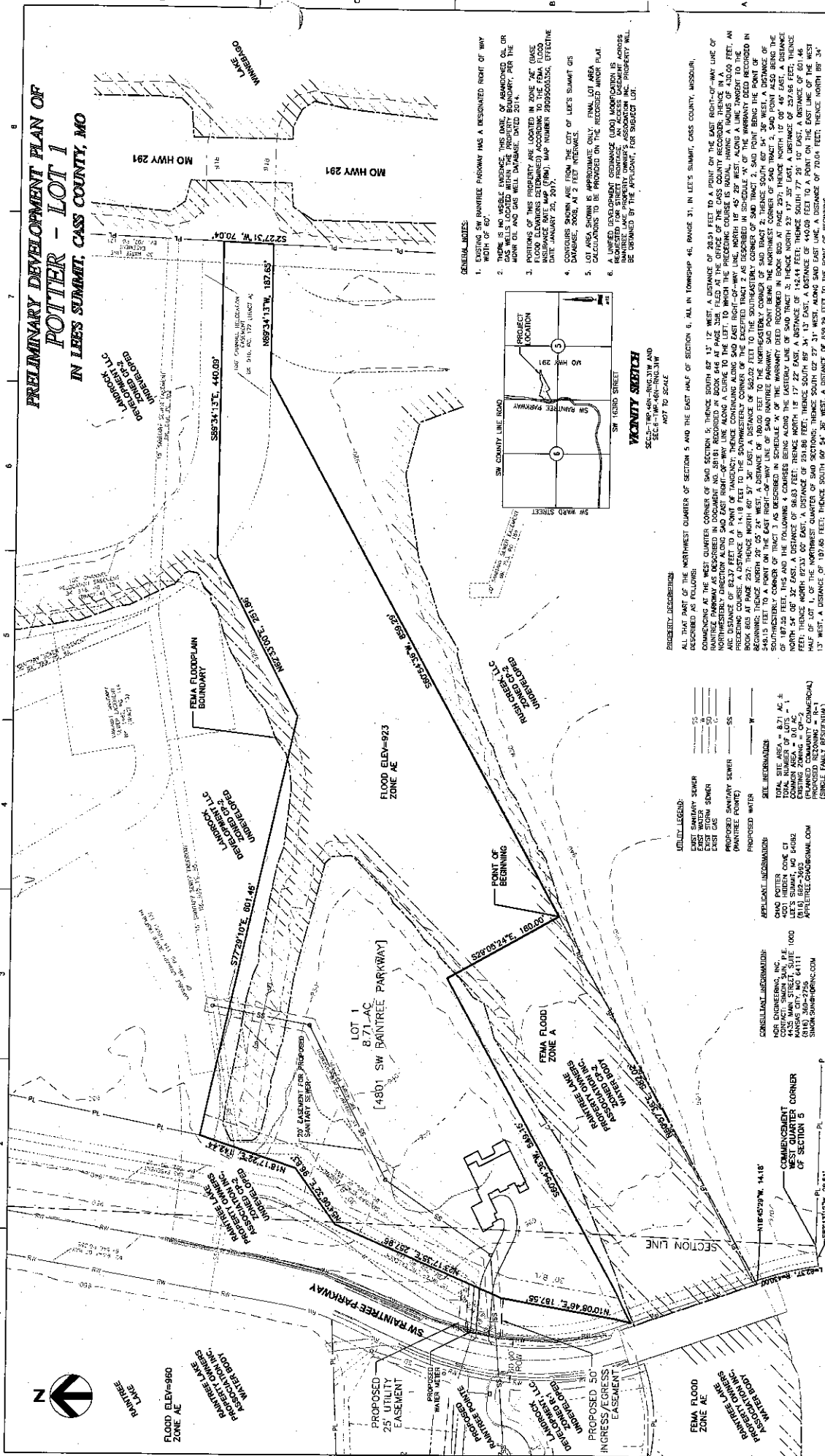


# PRELIMINARY DEVELOPMENT PLAN OF POTTER - LOT 1 IN LEES SUMMIT, CASS COUNTY, MO



HDR ENGINEERING, INC.  
 442 MAIN STREET SUITE 1000  
 MANASSAS, VA 20108  
 818.569.7259

PRELIMINARY DEVELOPMENT PLAN

CHAD POTTER  
 POTTER - LOT 1

LEES SUMMIT, CASS COUNTY, MISSOURI

SCALE: 1" = 60'

SHEET 1

**MAR 21 2017**

**- 2017 - 033**

Development Services

