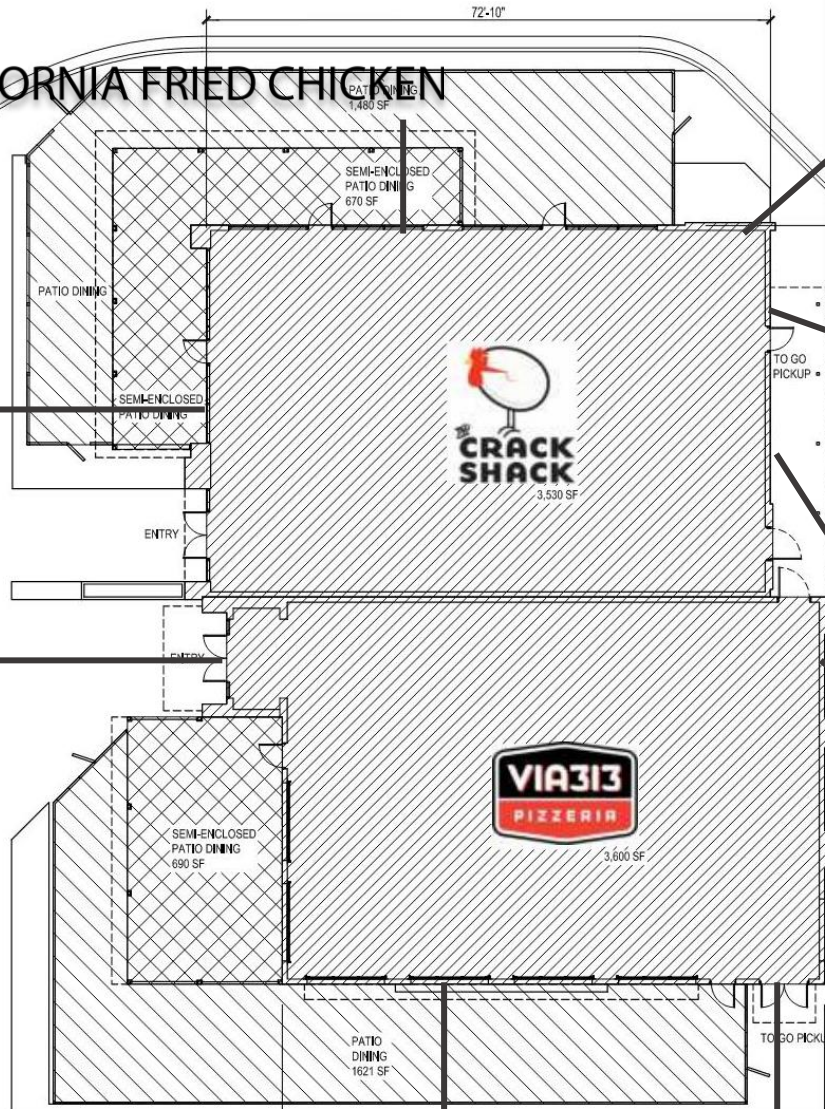
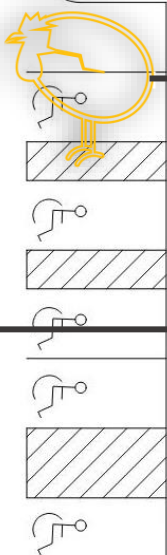


SOUTHERN CALIFORNIA FRIED CHICKEN

CRACK SHACK



TAKE AWAY

CRACK SHACK



GENUINE DETROIT-STYLE PIZZA VIA313

CRACK SHACK/VIA 313

LEES SUMMIT, MO

Outdoor Signage The Crack Shack

Pan Channel Letters

STANDARD FEATURES:

- Exterior Cabinets: Black 0.40 aluminum returns - 5" with 0.63 aluminum back
- 1" Black trim cap
- Faces: White Acrylic
- Illumination: L.E.D. Lighting

INSTALLATION:

- Mounted through stucco to wood wall into studs
- 3/16" x 4" STS Grabber Screws
- 3/16" Cement Anchors

ELECTRICAL:

- Carries UL listings

CRACK SHACK

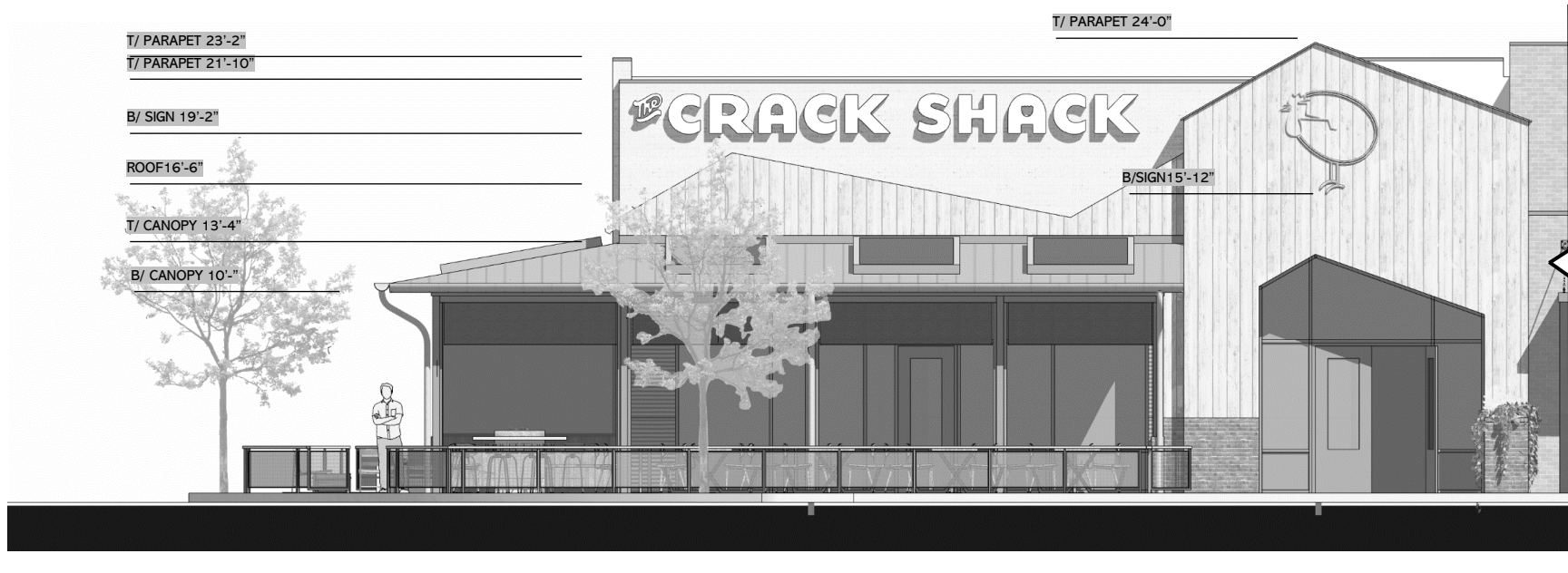
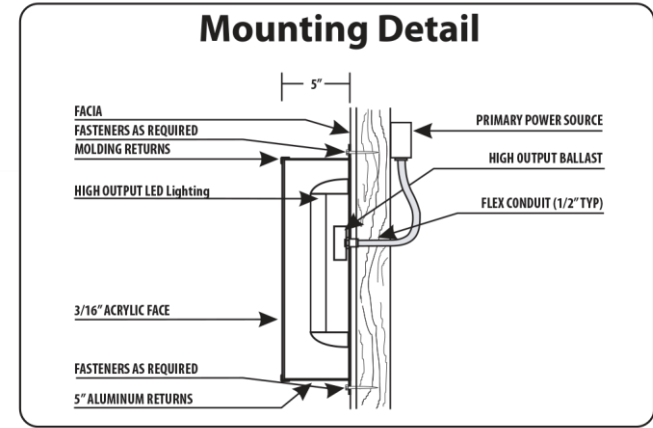
30"

330"



72"

65"



CRACK SHACK – WEST ELEVATION
OUTDOOR SIGNAGE

LEES SUMMIT, MO

Outdoor Signage - VIA313

STANDARD FEATURES:

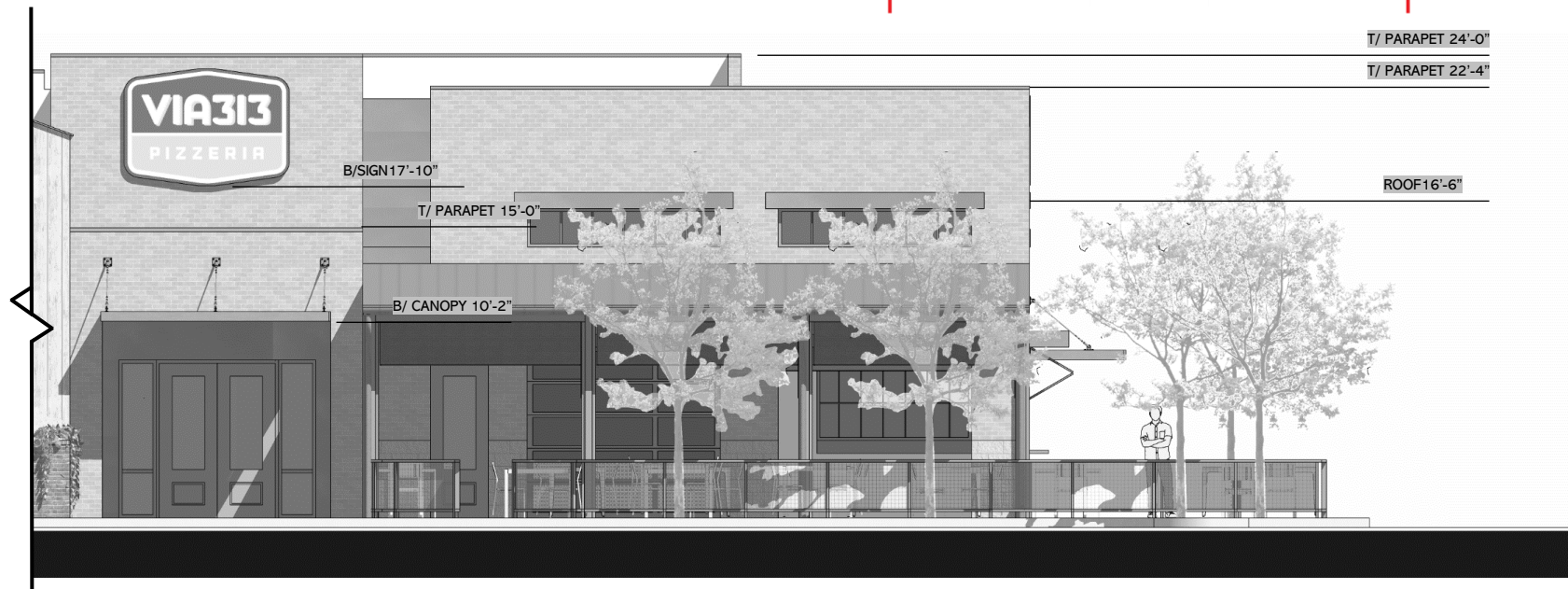
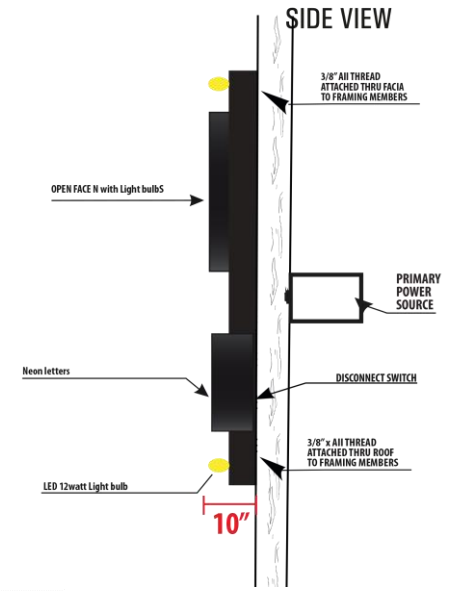
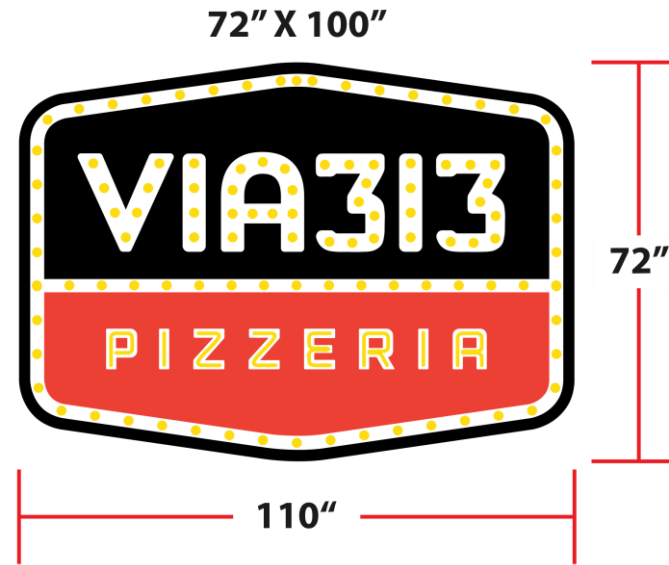
- Exterior Cabinets: Black 0.63 aluminum returns - 6" with 0.063 aluminum back & 2"x2" angle for structure
- Integral retainers with vinyl applied
- Faces: White Aluminum with Pan Channel Letters with bulbs and Neon
- Illumination: L.E.D. Lighting with 11 watt bulbs that chase
- Background Black 0.80 aluminum with 0.25"x2" Aluminum plate for mounting letters

INSTALLATION:

- Mounted through Roof beam and truss
- 3/8" All Thread and Strut 6 POINTS

ELECTRICAL:

- Carries UL listings



VIA313 – WEST ELEVATION
 OUTDOOR SIGNAGE
 LEES SUMMIT, MO

Outdoor Signage The Crack Shack

Pan Channel Letters

STANDARD FEATURES:

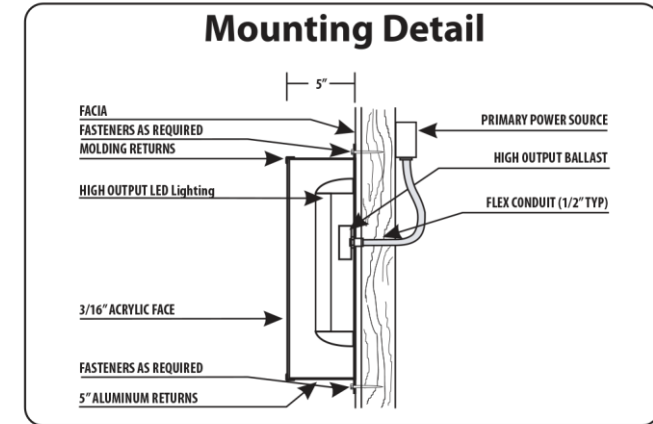
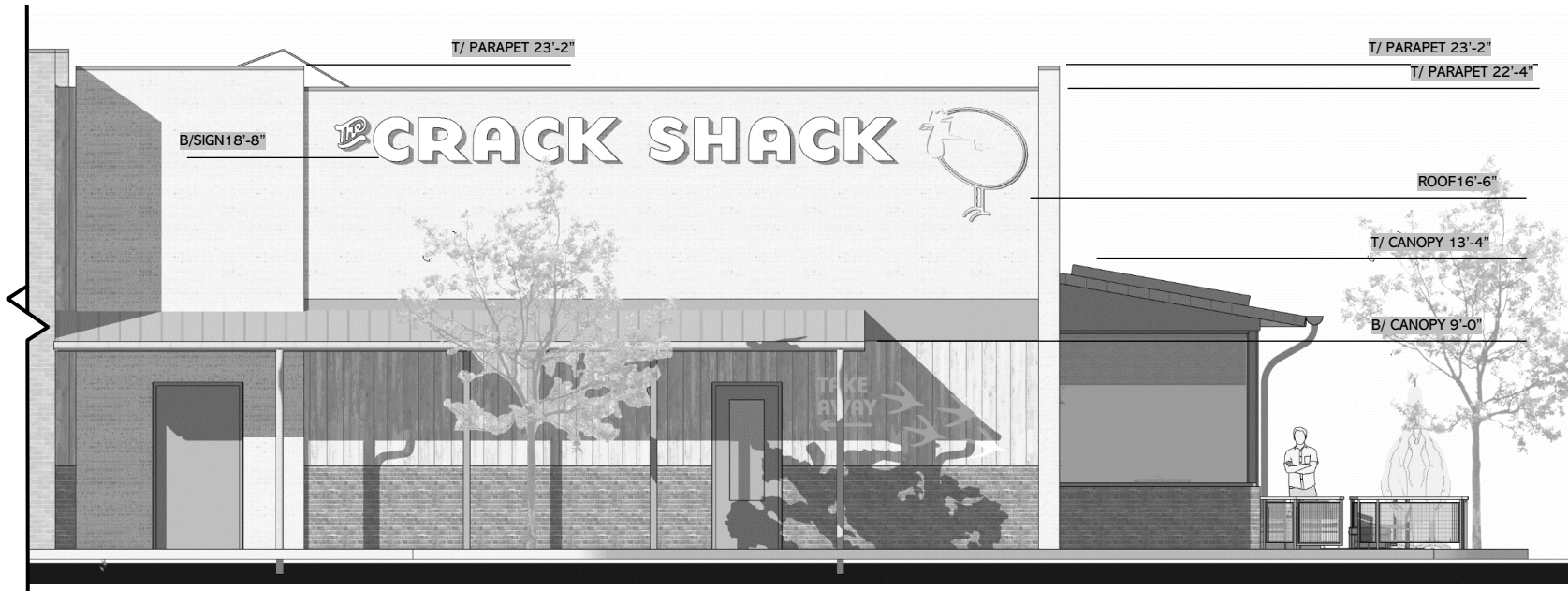
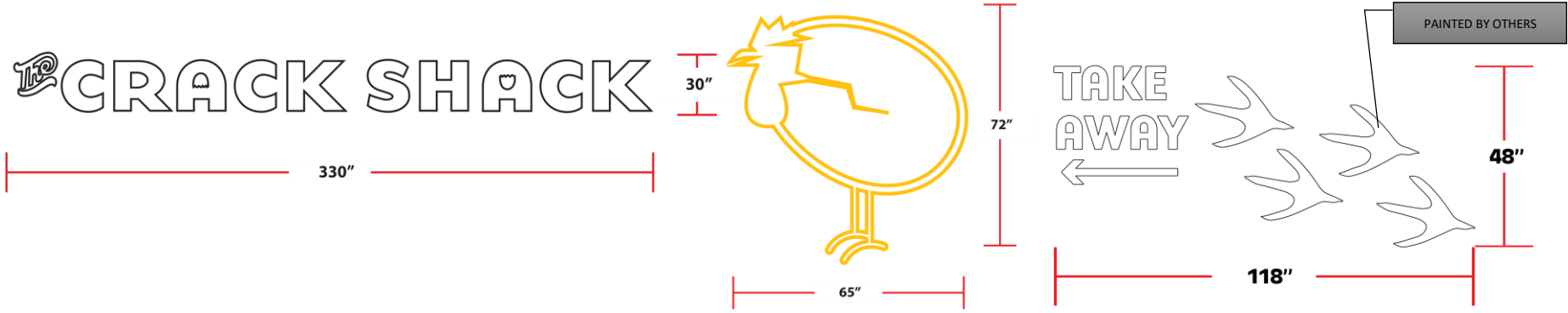
- Exterior Cabinets: Black 0.40 aluminum returns - 5" with 0.63 aluminum back
- 1" Black trim cap
- Faces: White Acrylic
- Illumination: L.E.D. Lighting

INSTALLATION:

- Mounted through stucco to wood wall into studs
- 3/16" x 4" STS Grabber Screws
- 3/16" Cement Anchors

ELECTRICAL:

- Carries UL listings



CRACK SHACK – EAST ELEVATION
OUTDOOR SIGNAGE

LEES SUMMIT, MO

Outdoor Signage - VIA313

STANDARD FEATURES:

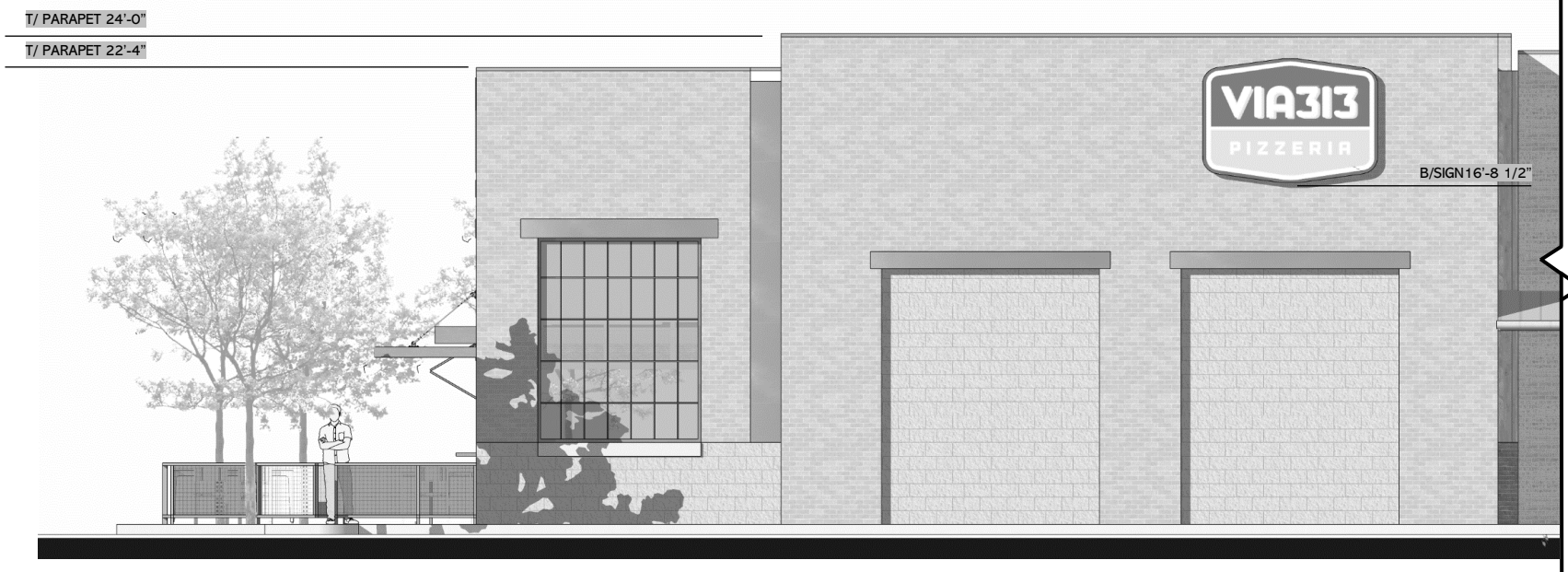
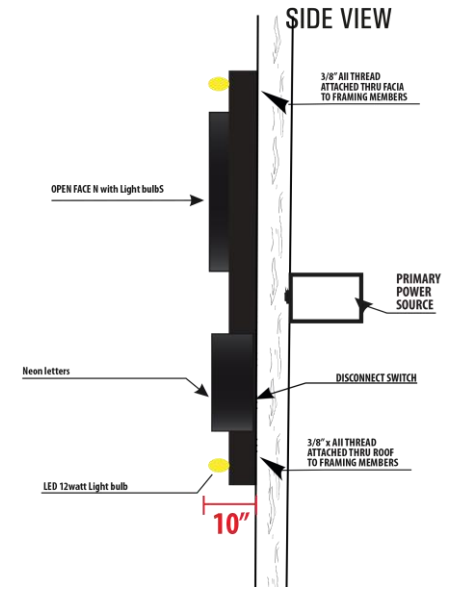
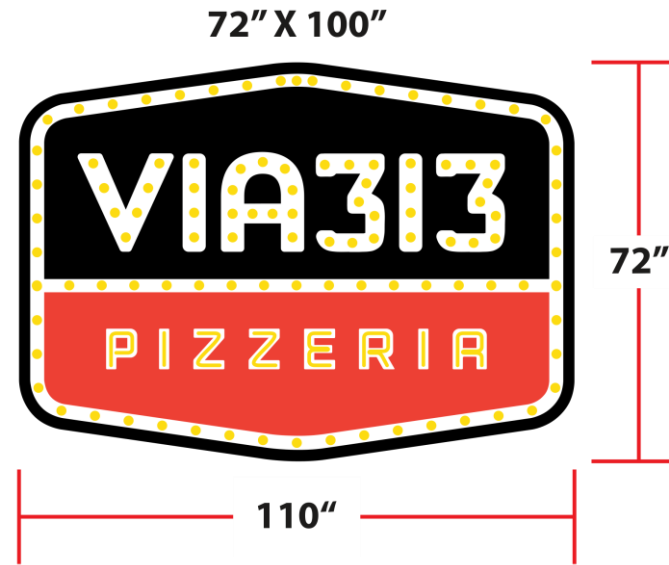
- Exterior Cabinets: Black 0.63 aluminum returns - 6" with 0.063 aluminum back & 2"x2" angle for structure
- Integral retainers with vinyl applied
- Faces: White Aluminum with Pan Channel Letters with bulbs and Neon
- Illumination: L.E.D. Lighting with 11 watt bulbs that chase
- Background Black 0.80 aluminum with 0.25"x2" Aluminum plate for mounting letters

INSTALLATION:

- Mounted through Roof beam and truss
- 3/8" All Thread and Strut 6 POINTS

ELECTRICAL:

- Carries UL listings



VIA313 – EAST ELEVATION
 OUTDOOR SIGNAGE
 LEES SUMMIT, MO

SOUTHERN CALIFORNIA FRIED CHICKEN

612"

21"

PAINTED BY OTHERS

PAINTED BY OTHERS



278"

140"

T/ PARAPET 24'-0"
T/ PARAPET 23'-2"
T/ PARAPET 22'-2"

B/SIGN 19'-2"

SOUTHERN CALIFORNIA FRIED CHICKEN

ROOF 16'-6"

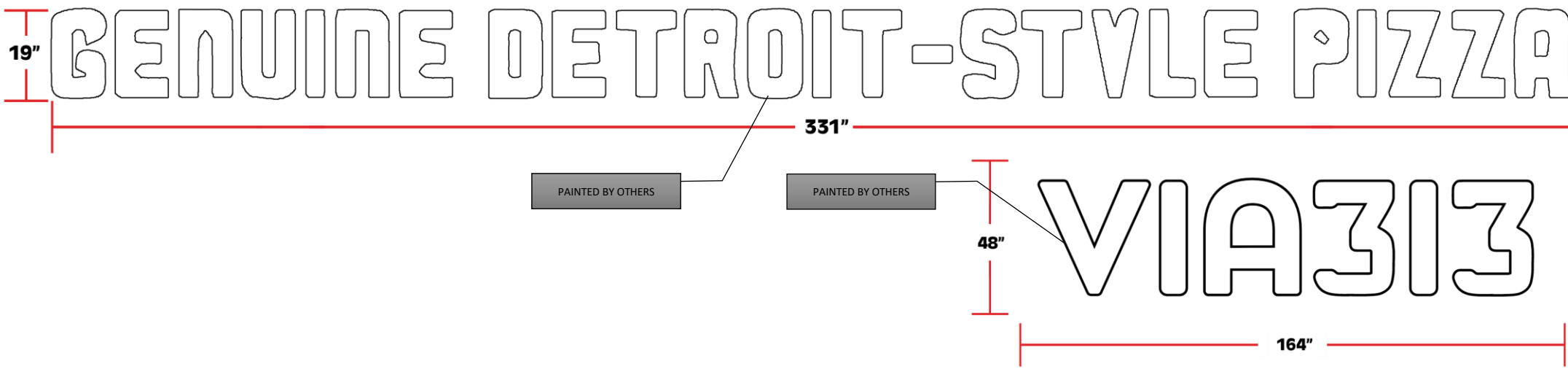
T/ CANOPY 13'-4"

B/ CANOPY 10'-"



CRACK SHACK – NORTH ELEVATION OUTDOOR SIGNAGE

LEES SUMMIT, MO



CRACK SHACK – SOUTH ELEVATION
 OUTDOOR SIGNAGE
 LEES SUMMIT, MO

Outdoor Signage - VIA313

STANDARD FEATURES:

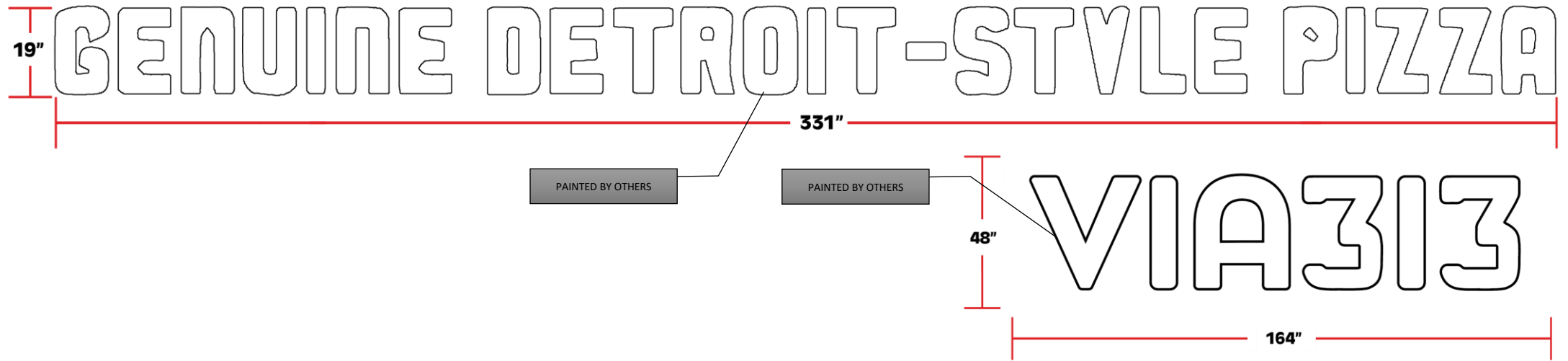
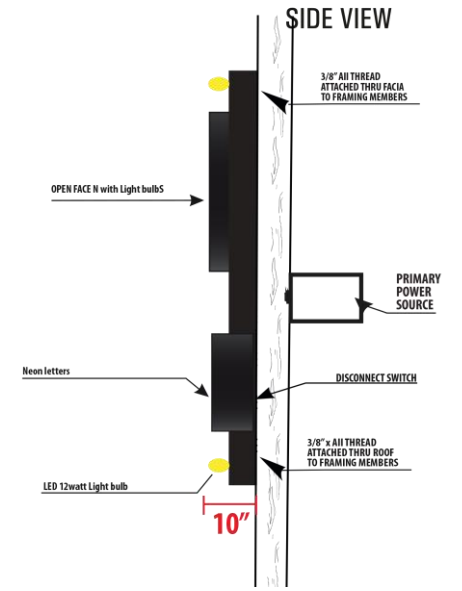
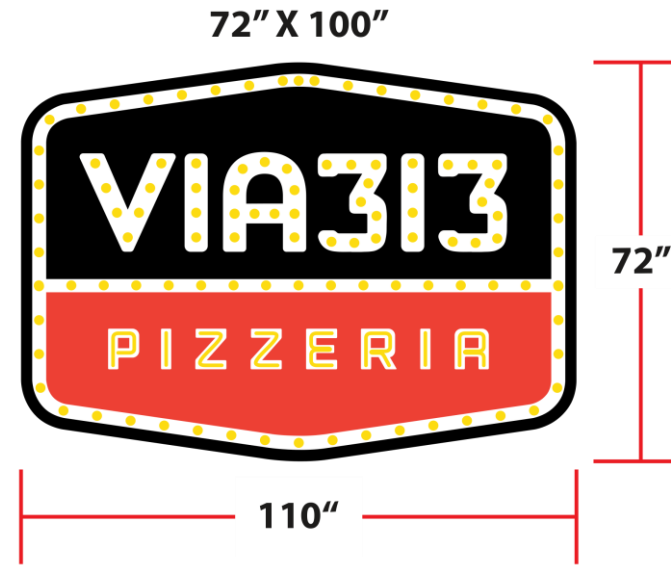
- Exterior Cabinets: Black 0.63 aluminum returns - 6" with 0.063 aluminum back & 2"x2" angle for structure
- Integral retainers with vinyl applied
- Faces: White Aluminum with Pan Channel Letters with bulbs and Neon
- Illumination: L.E.D. Lighting with 11 watt bulbs that chase
- Background: Black 0.80 aluminum with 0.25"x2" Aluminum plate for mounting letters

INSTALLATION:

- Mounted through Roof beam and truss
- 3/8" All Thread and Strut 6 POINTS

ELECTRICAL:

- Carries UL listings



VIA313
OUTDOOR SIGNAGE
LEES SUMMIT, MO

Outdoor Signage The Crack Shack

Pan Channel Letters

STANDARD FEATURES:

- Exterior Cabinets: Black 0.40 aluminum returns - 5" with 0.63 aluminum back
- 1" Black trim cap
- Faces: White Acrylic
- Illumination: L.E.D. Lighting

INSTALLATION:

- Mounted through stucco to wood wall into studs
- 3/16" x 4" STS Grabber Screws
- 3/16" Cement Anchors

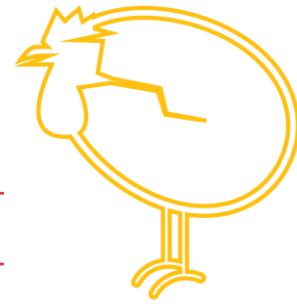
ELECTRICAL:

- Carries UL listings

CRACK SHACK

330"

30"



72"

65"



278"

140"

TAKE AWAY



PAINTED BY OTHERS

48"

PAINTED BY OTHERS

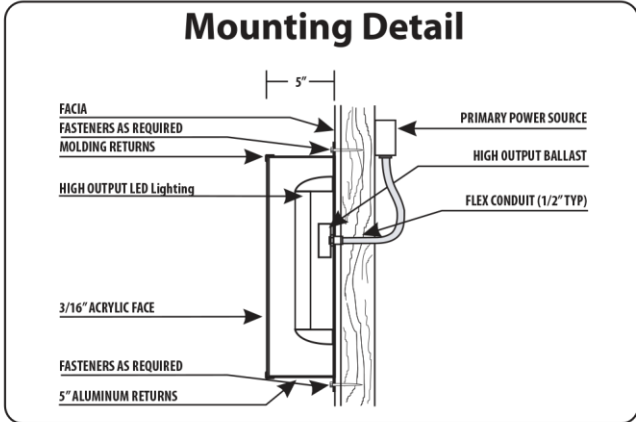
PAINTED BY OTHERS

118"

SOUTHERN CALIFORNIA FRIED CHICKEN

21"

612"



CRACK SHACK
OUTDOOR SIGNAGE
LEES SUMMIT, MO