

smalls
SLIDERS®

SMALLS SLIDERS
101 SW OLDHAM PKWY
LEES SUMMIT, MO 64081

HillFoleyRossi
ARCHITECTURE + ENGINEERING

Hill Foley Rossi & Associates
ARCHITECTURE + ENGINEERING
3680 Pleasant Hill Road
Suite 200
Duluth, GA 30096
770.622.9858

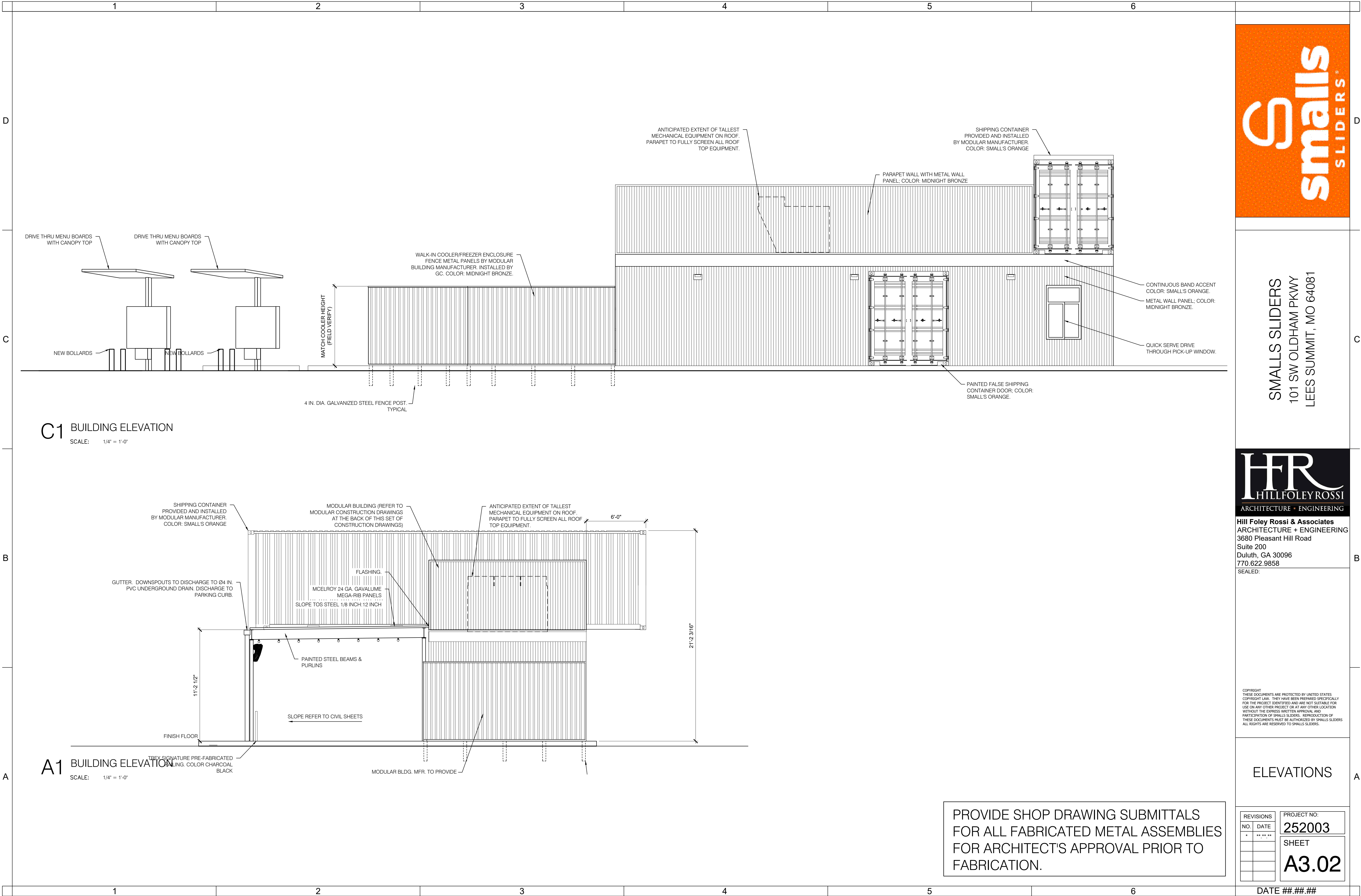
SEALED:

COPYRIGHT
THESE DOCUMENTS ARE PROTECTED BY UNITED STATES
COPYRIGHT LAW. THEY HAVE BEEN PREPARED SPECIFICALLY
FOR THE PROJECT IDENTIFIED AND ARE NOT SUITABLE FOR
USE ON ANY OTHER PROJECT OR AT ANY OTHER LOCATION
WITHOUT THE EXPRESS WRITTEN APPROVAL AND
PARTICIPATION OF SMALLS SLIDERS. REPRODUCTION OF
THESE DOCUMENTS MUST BE AUTHORIZED BY SMALLS SLIDERS.
ALL RIGHTS ARE RESERVED TO SMALLS SLIDERS.

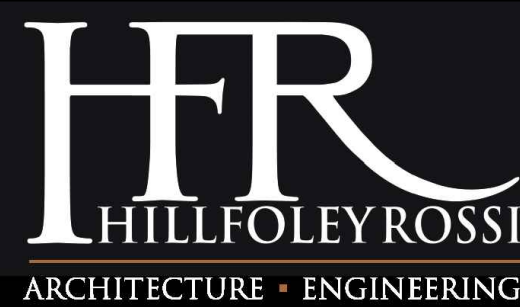
ELEVATIONS

REVISIONS		PROJECT NO:
NO.	DATE	252003
		SHEET A3.01

DATE ###.###.###



SMALLS SLIDERS
101 SW OLDHAM PKWY
LEES SUMMIT, MO 64081



Hill Foley Rossi & Associates
ARCHITECTURE + ENGINEERING
3680 Pleasant Hill Road
Suite 200
Duluth, GA 30096
770.622.9858

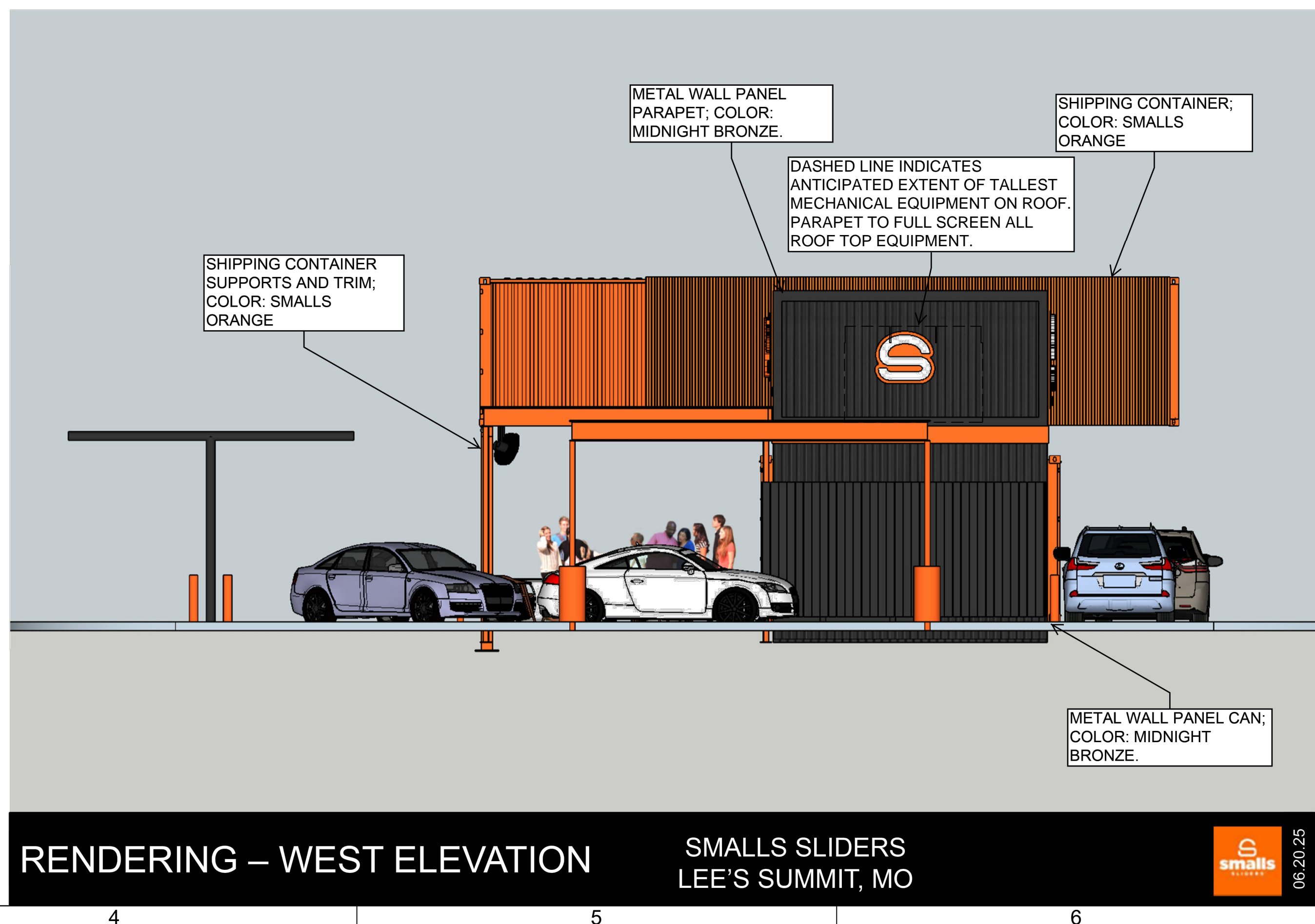
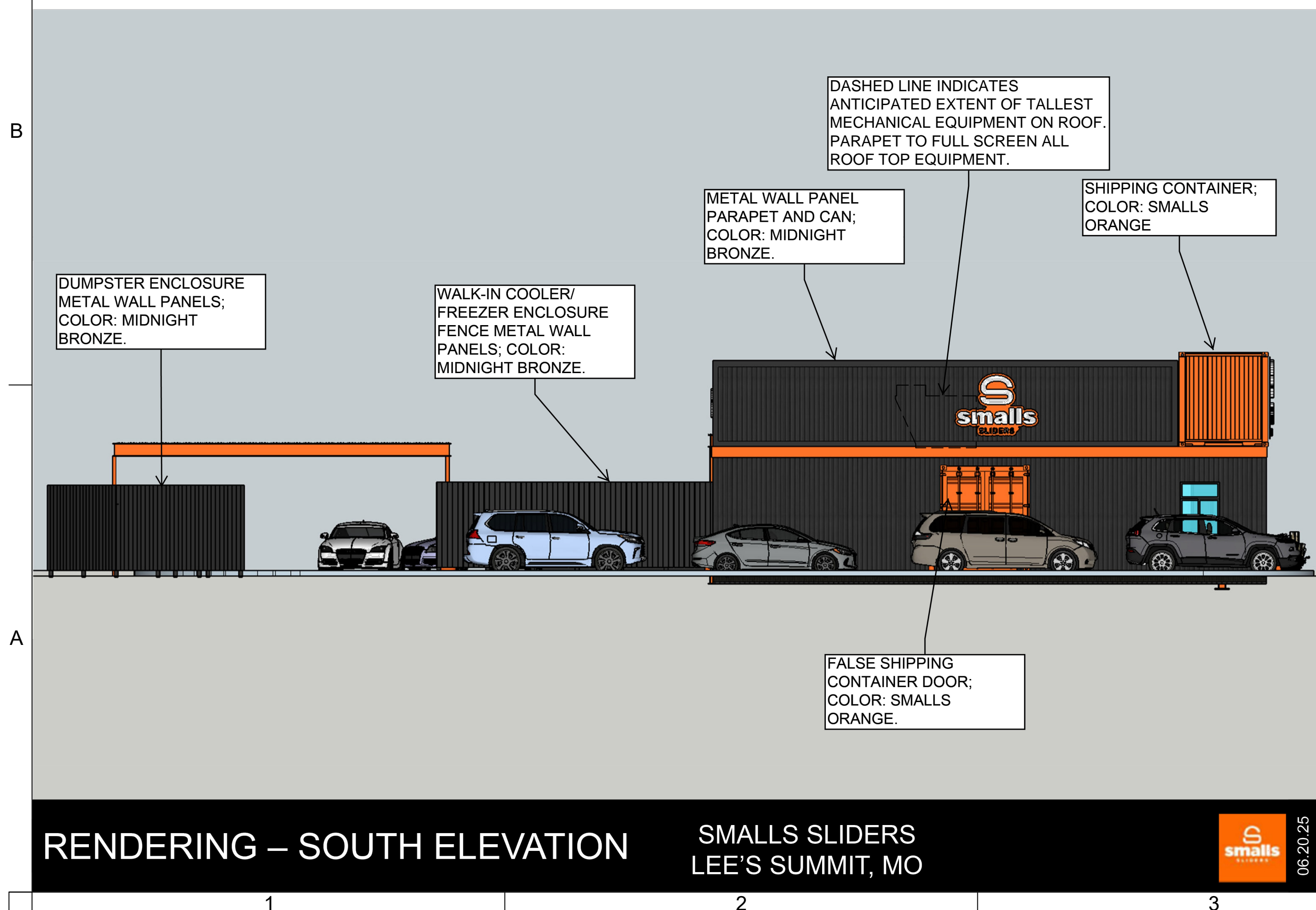
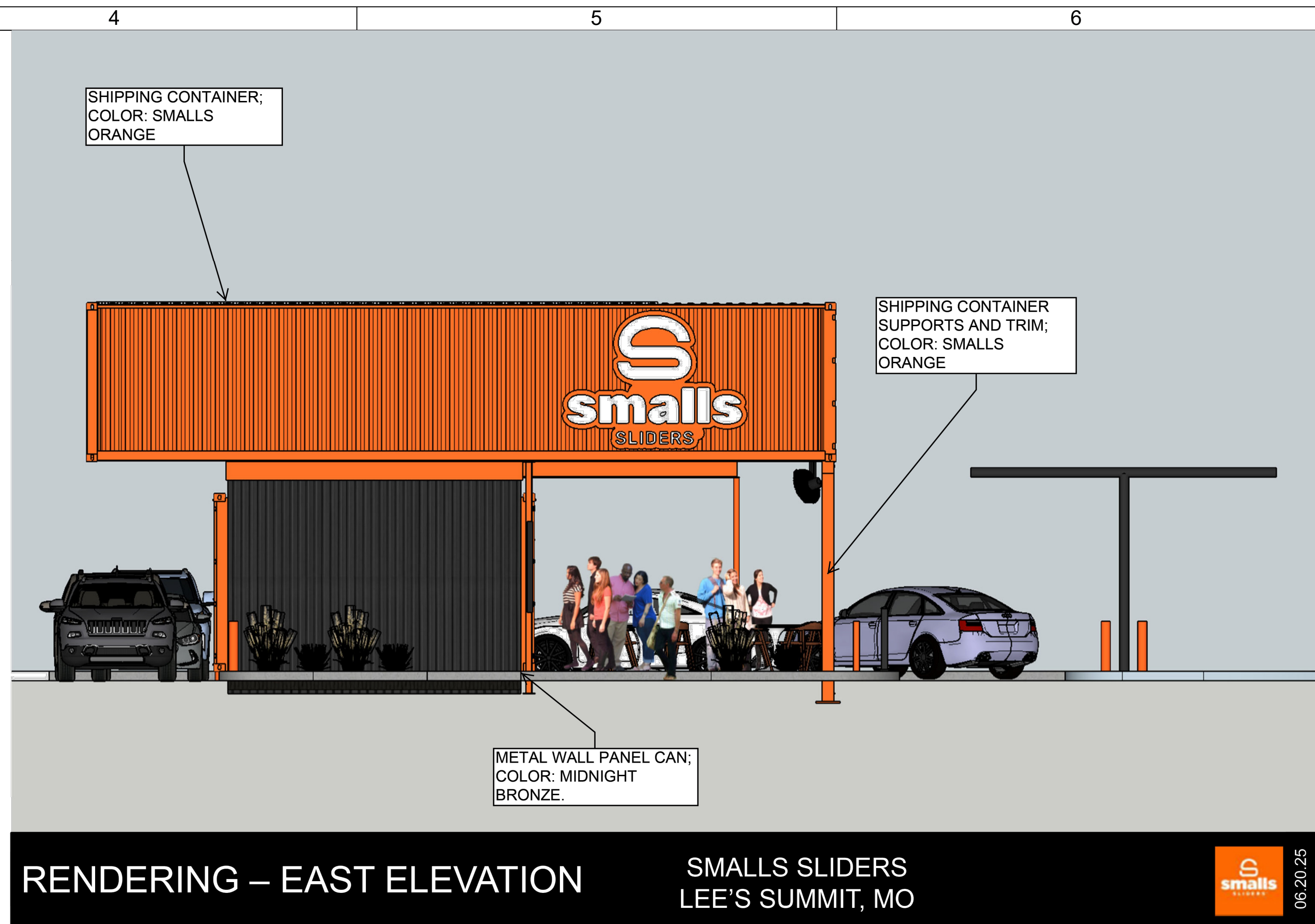
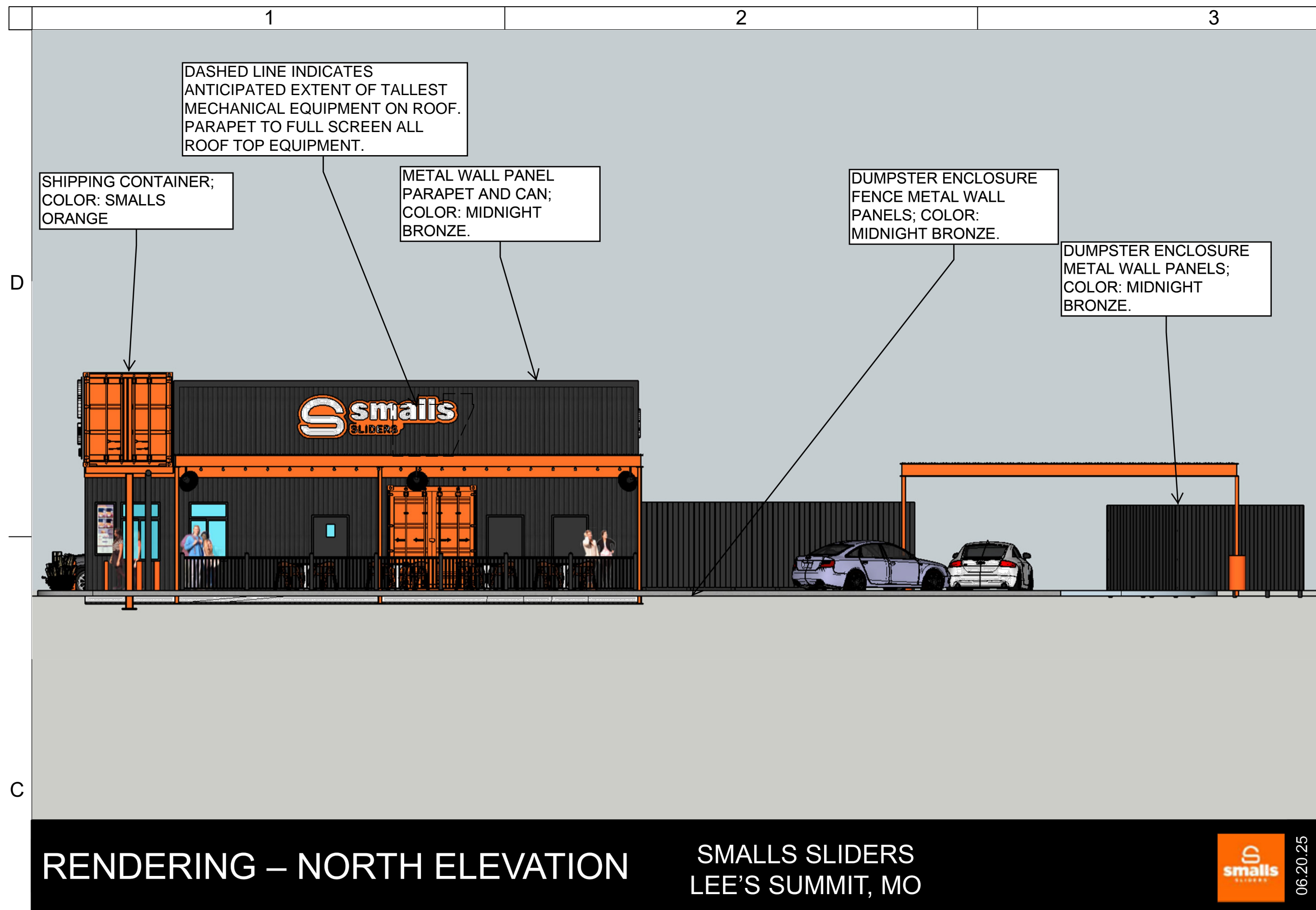
SEALED:

COPYRIGHT
THESE DOCUMENTS ARE PROTECTED BY UNITED STATES
COPYRIGHT LAW. THEY HAVE BEEN PREPARED SPECIFICALLY
FOR THE PROJECT IDENTIFIED AND ARE NOT SUITABLE FOR
USE ON ANY OTHER PROJECT OR AT ANY OTHER LOCATION
WITHOUT THE EXPRESS WRITTEN APPROVAL AND
PARTICIPATION OF SMALLS SLIDERS. REPRODUCTION OF
THESE DOCUMENTS MUST BE AUTHORIZED BY SMALLS SLIDERS.
ALL RIGHTS ARE RESERVED TO SMALLS SLIDERS.

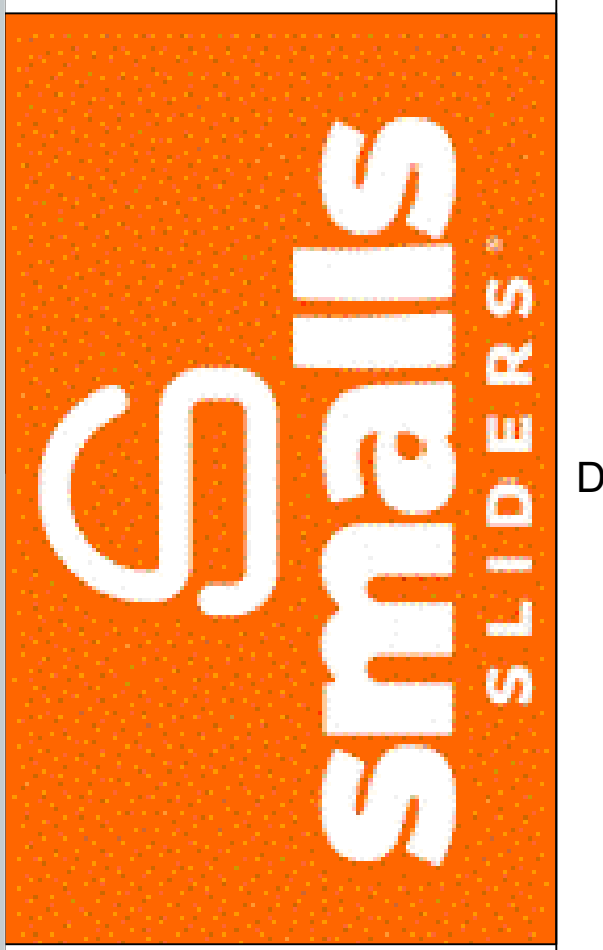
ELEVATIONS

REVISIONS		PROJECT NO:
NO.	DATE	252003
*	**.*.*	SHEET
		A3.02

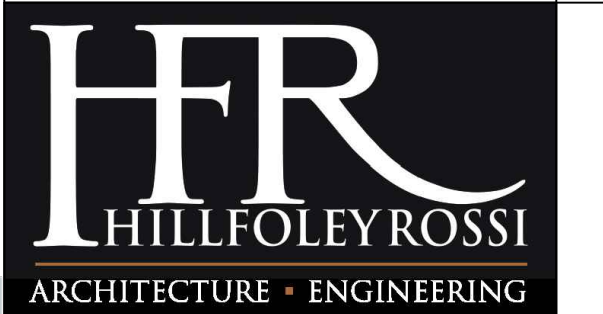
DATE ###.###.###



PROJECT DATA:
BUILDING TYPE: MODULAR (BY OTHERS)
BUILDING HEIGHT: 21'-0"
COLORS: MAIN BODY: MIDNIGHT BRONZE
ACCENTS: SMALLS ORANGE
DRIVE THRU: YES
BUILDING SF: 935 (INCLUDING WALK-IN BOX)
SEATING COUNT: TBD (TYP. 40 ALL EXTERIOR)
CANOPY TYPE: INTEGRAL WITH ORDER POINTS



SMALLS SLIDERS
101 SW OLDHAM PKWY
LEES SUMMIT, MO 64081

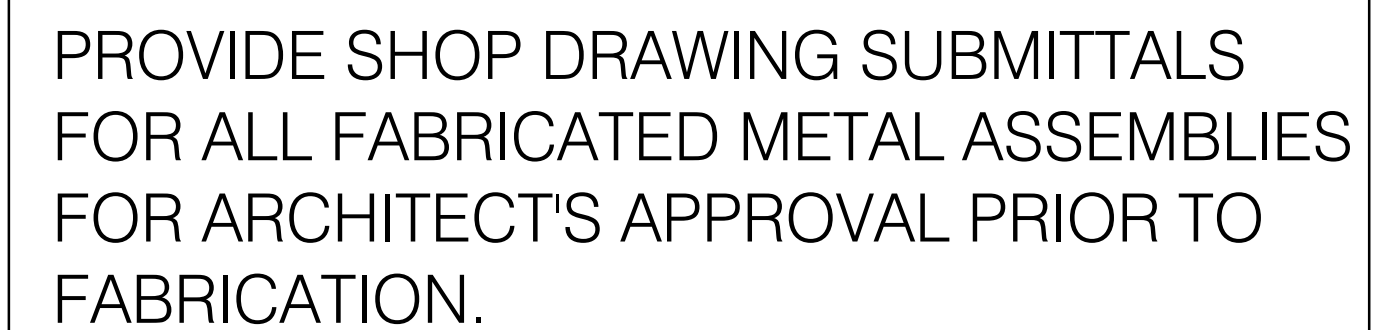
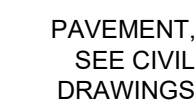


Hill Foley Rossi & Associates
ARCHITECTURE + ENGINEERING
3680 Pleasant Hill Road
Suite 200
Duluth, GA 30096
770.622.9858
SEALED:

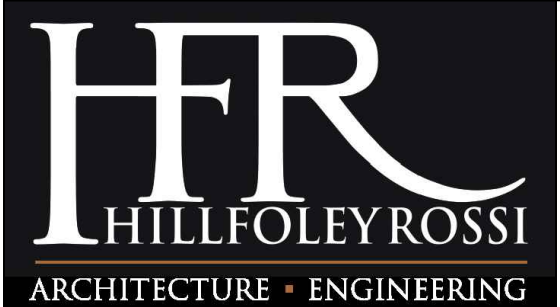
RENDERINGS

REVISIONS		PROJECT NO:
NO.	DATE	252003
*	**	SHEET
		A3.02

DATE ###.###.###



SMALLS SLIDERS
101 SW OLDHAM PKWY
LEES SUMMIT, MO 64081



Hill Foley Rossi & Associates
ARCHITECTURE + ENGINEERING
3680 Pleasant Hill Road
Suite 200
Duluth, GA 30096
770.622.9858

SEALED:

COPYRIGHT
THESE DOCUMENTS ARE PROTECTED BY UNITED STATES
COPYRIGHT LAW. THEY HAVE BEEN PREPARED SPECIFICALLY
FOR THE PROJECT IDENTIFIED AND ARE NOT SUITABLE FOR
USE ON ANY OTHER PROJECT OR AT ANY OTHER LOCATION
WITHOUT THE EXPRESS WRITTEN APPROVAL AND
PARTICIPATION OF SMALLS SLIDERS. REPRODUCTION OF
THESE DOCUMENTS MUST BE AUTHORIZED BY SMALLS SLIDERS
ALL RIGHTS ARE RESERVED TO SMALLS SLIDERS.

TRASH
ENCLOSURE

REVISIONS		PROJECT NO:
NO.	DATE	252003
*	** ** *	SHEET
	* *	
		A4.04

DATE ##.##.##