

LEE'S SUMMIT DOWNTOWN MARKET REZONING & PRELIMINARY DEVELOPMENT PLAN

GREEN STREET - 2ND STREET TO 3RD STREET

LEE'S SUMMIT, MISSOURI
JACKSON COUNTY

OWNER: CITY OF LEE'S SUMMIT, MISSOURI
CONTACT: MARK DUNNING, CITY MANAGER
220 SE GREEN ST, LEE'S SUMMIT, MO 64063
816.969.1010

OLSSON - LANDSCAPE ARCHITECTURE
MO CERTIFICATE OF AUTHORITY #: 200500285

LANDSCAPE ARCHITECT:

olsson studio

1814 MAIN ST,
KANSAS CITY, MO 64108
TEL 816.842.8844
www.olsson-studio.com

CIVIL ENGINEER:

olsson

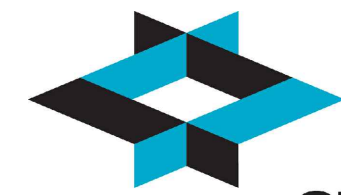
1301 BURLINGTON ST,
NORTH KANSAS CITY, MO 64116
TEL 816.587.4320
www.olsson.com

ELECTRICAL ENGINEER:

olsson

1301 BURLINGTON ST,
NORTH KANSAS CITY, MO 64116
TEL 816.587.4320
www.olsson.com

ARCHITECT:



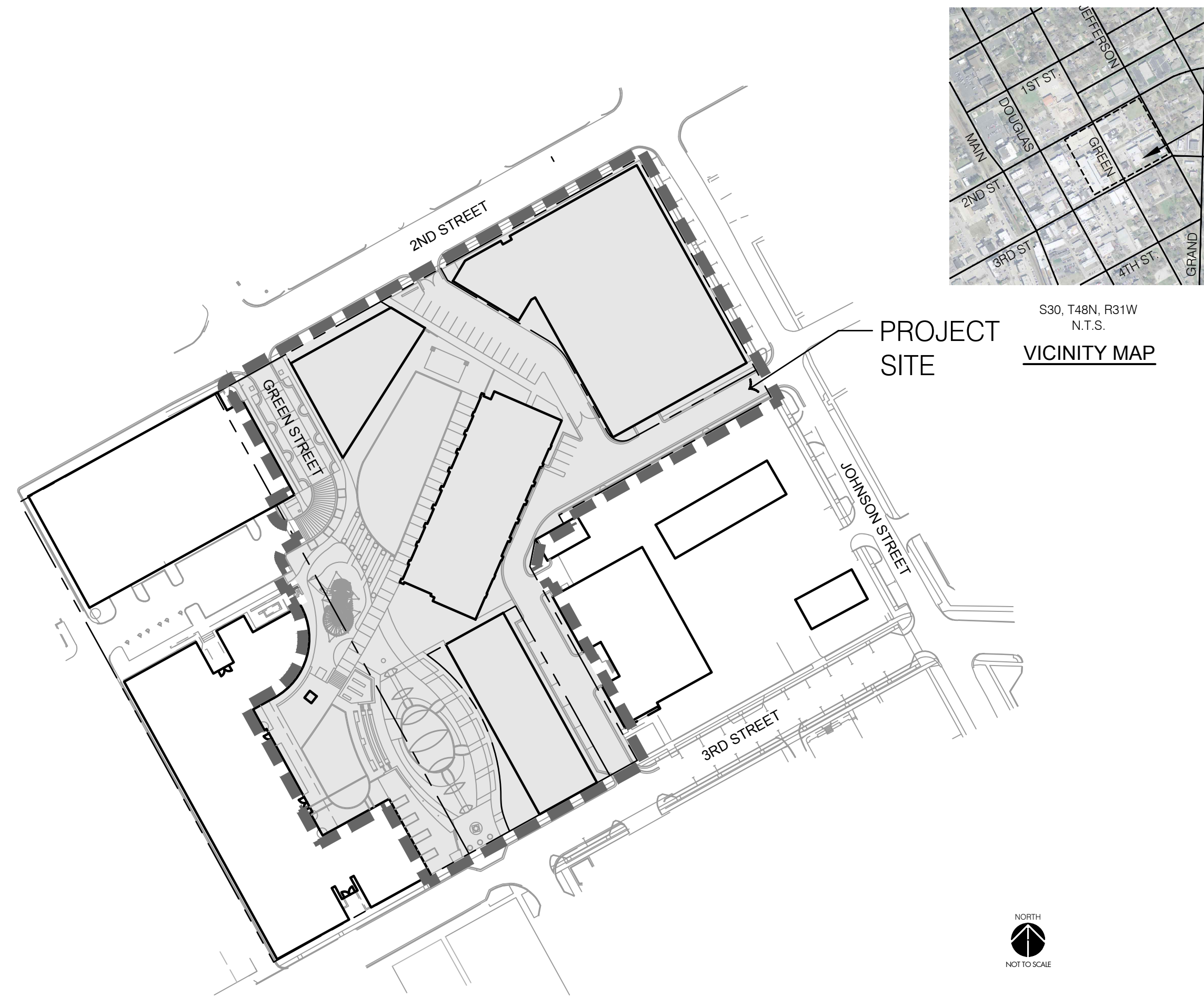
GLMV Architecture

9229 WARD PKWY # 210,
KANSAS CITY, MO 64114
TEL 816.444.4200
www.glmv.com

STRUCTURAL ENGINEER:

olsson

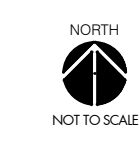
2111 S 67TH ST #200,
OMAHA, NE 68106
TEL 402.341.1116
www.olsson.com



PROJECT LOCATION

PROJECT SITE

S30, T48N, R31W
N.T.S.
VICINITY MAP



DRAWING DATE

07/28/2023 PRELIMINARY DEVELOPMENT PLANS
08/28/2023 PRELIMINARY DEVELOPMENT PLANS 2ND SUBMITTAL

**REZONING AND PRELIMINARY DEVELOPMENT PLAN
PROPERTY DESCRIPTION:**

ALL OF LOT 1, LEE'S SUMMIT CITY HALL, TOGETHER WITH ALL OF LOTS 5 THROUGH 10, TOGETHER WITH PART OF LOT 4, TOGETHER WITH ALL OF THE ADJACENT 20-FOOT-WIDE ALLEY, TOGETHER WITH ALL OF GREEN STREET RIGHT OF WAY, ALL IN BLOCK 18 OF W.B. HOWARD'S ADDITION TO THE TOWN OF STROTHER, BOTH SUBDIVISIONS IN THE CITY OF LEE'S SUMMIT, JACKSON COUNTY, MISSOURI, LYING IN THE SOUTHWEST QUARTER OF SECTION 5, TOWNSHIP 47 NORTH, RANGE 31 WEST, DESCRIBED BY PATRICK ETHAN WARD, PLS-2005000071 OF OLSSON, INC., LC-366, ON JULY 28, 2023, AS FOLLOWS:

BEGINNING AT THE SOUTHERNMOST CORNER OF SAID LOT 1; THENCE NORTH 28 DEGREES 53 MINUTES 39 SECONDS WEST, ON THE SOUTHWESTERLY LINE OF SAID LOT 1, A DISTANCE OF 520.09 FEET TO WESTERNMOST CORNER OF SAID LOT 1; THENCE NORTH 60 DEGREES 57 MINUTES 02 SECONDS EAST, ON THE NORTHWESTERLY LINE OF SAID LOT 1, AND ON THE NORTHWESTERLY LINE OF SAID BLOCK 18, A DISTANCE OF 700.34 FEET TO THE NORTHERNMOST CORNER OF SAID BLOCK 18; THENCE SOUTH 29 DEGREES 04 MINUTES 41 SECONDS EAST, ON THE NORTHEASTERLY LINE OF SAID BLOCK 18, A DISTANCE OF 270.98 FEET TO THE EASTERNMOST CORNER OF SAID 20-FOOT-WIDE ALLEY; THENCE SOUTH 61 DEGREES 04 MINUTES 19 SECONDS WEST, ON THE SOUTHEASTERLY LINE OF SAID ALLEY, A DISTANCE OF 240.27 FEET TO A POINT ON THE NORTHERNMOST CORNER OF SAID LOT 4; THENCE SOUTH 28 DEGREES 55 MINUTES 51 SECONDS EAST, DEPARTING SAID SOUTHEASTERLY LINE, ON THE NORTHEASTERLY LINE OF SAID LOT 4, A DISTANCE OF 9.74 FEET TO A POINT; THENCE SOUTH 60 DEGREES 38 MINUTES 25 SECONDS WEST, DEPARTING SAID NORTHEASTERLY LINE, A DISTANCE OF 32.63 FEET TO A POINT; THENCE SOUTH 10 DEGREES 58 MINUTES 02 SECONDS WEST A DISTANCE OF 26.69 FEET TO A POINT; THENCE SOUTH 28 DEGREES 58 MINUTES 15 SECONDS EAST A DISTANCE OF 219.45 FEET TO A POINT ON THE SOUTHEASTERLY LINE OF SAID BLOCK 18; THENCE SOUTH 60 DEGREES 58 MINUTES 38 SECONDS WEST, ON SAID SOUTHEASTERLY LINE, AND ON THE SOUTHEASTERLY LINE OF SAID LOT 1, A DISTANCE OF 411.51 FEET TO THE POINT OF BEGINNING, CONTAINING 292,983 SQUARE FEET OR 6.7260 ACRES, MORE OR LESS.

MISSOURI ONE CALL:

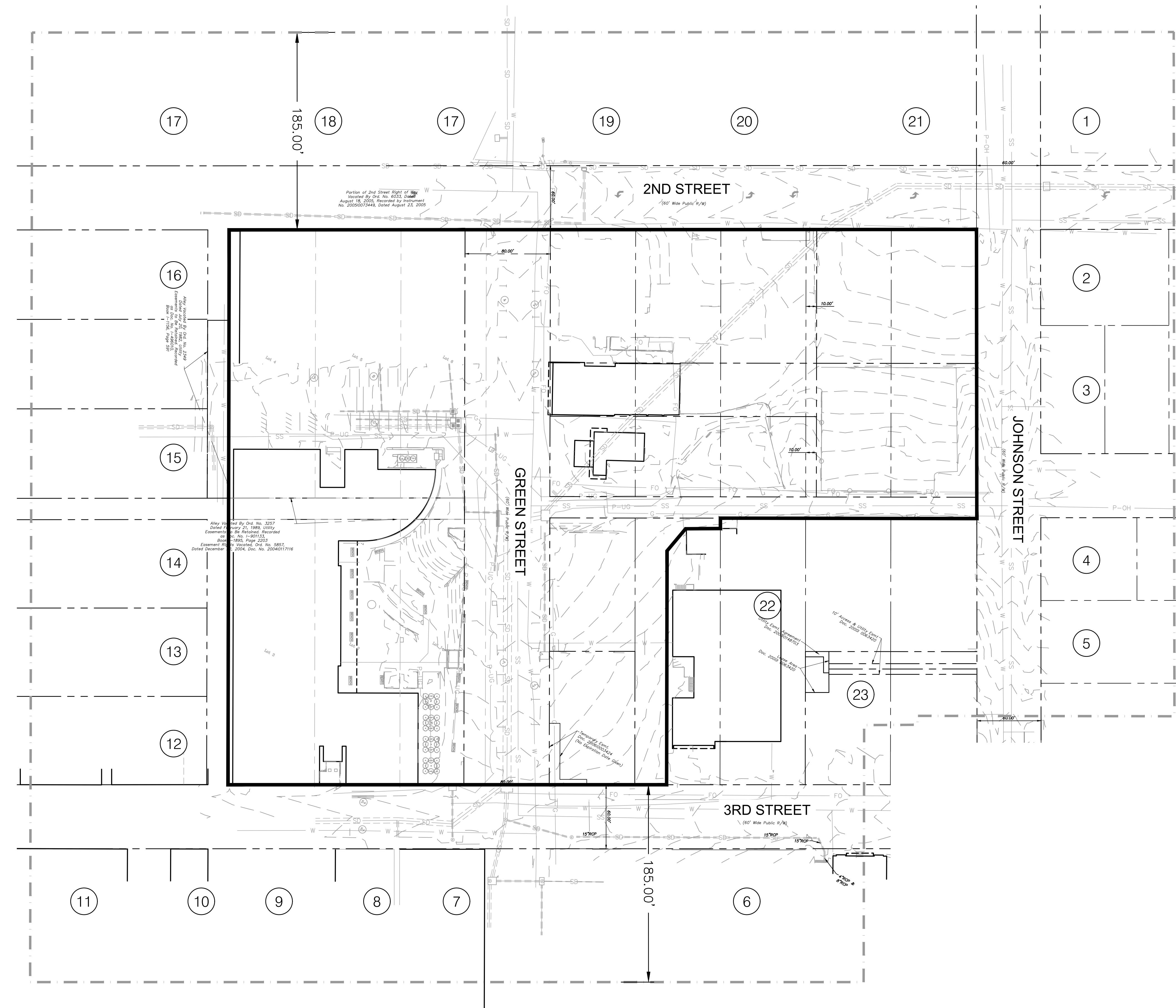


THE EXISTENCE AND LOCATION OF UNDERGROUND UTILITY PIPES AND STRUCTURES SHOWN ON THESE PLANS WERE OBTAINED BY A SEARCH OF AVAILABLE RECORDS AND TO THE BEST OF OUR KNOWLEDGE CONSTITUTES ALL KNOW FACILITIES. HOWEVER, THE CONTRACTOR IS REQUIRED TO TAKE DUE PRECAUTIONARY MEASURES TO PROTECT ANY EXISTING UTILITIES OR STRUCTURES LOCATED AT THE WORK SITE. IT IS THE CONTRACTOR'S RESPONSIBILITY TO CONTACT MISSOURI ONE CALL SYSTEMS, INC. AT 1-800-344-7483 IN ADVANCE OF ANY EXCAVATION FOR THE MARK-OUT OF THE LOCATION OF UTILITIES AND NOTIFICATION OF COMMENCEMENT OF WORK.

**NOT FOR
CONSTRUCTION**

Copyright 2023 - Olsson, INC DBA
Olsson Studio. All drawn and written
information appearing herein shall not
be duplicated, disclosed, or otherwise
used without written consent.

PROJECT NO: 022-00393



1 EXISTING CONDITIONS

PROPERTY OWNERS WITHIN 185'			
KEY	PROPERTY ADDRESS	OWNER / OWNER ADDRESS	LAND USE / ZONING
1	300 SE 2ND ST LEES SUMMIT, MO 64063	EJN HOLDINGS LLC 6540 W 95TH ST STE 103 OVERLAND PARK, KS 66212	OFF BLDG. ≥15000 SF
2	201 SE JOHNSON ST LEES SUMMIT, MO 64063	FELL JAMES R & RACHAEL A 201 SE JOHNSON ST LEES SUMMIT, MO 64063	SF RESIDENCE
3	300 SE COOPER ST LEES SUMMIT, MO 64063	1706 PROPERTIES LLC 1706 GAMBRELL ST GREENWOOD, MO 64034	SF RESIDENCE
4	211 SE JOHNSON ST LEES SUMMIT, MO 64063	ZAK DAVID & CAROLYN 501 SE COUNTRY LN LEES SUMMIT, MO 64063	SF RESIDENCE
5	215 SE JOHNSON ST LEES SUMMIT, MO 64063	KC COMFORT PROPERTIES LLC 208 SE 3RD ST LEES SUMMIT, MO 64063	VACANT RES LAND
6	203 SE 3RD ST LEES SUMMIT, MO 64063	3GREENSTREET LLC 4705 CENTRAL ST KANSAS CITY, MO 64112	RETAIL STORE
7	129 SE 3RD ST LEES SUMMIT, MO 64063	WATERS & SON LLC 129 SE 3RD ST LEES SUMMIT, MO 64063	RETAIL STORE
8	123 SE 3RD ST LEES SUMMIT, MO 64063	3RD STREET RESTAURANT ASSOCIATES LLC 123 SE 3RD ST LEES SUMMIT, MO 64063	RESTAURANT
9	121 SE 3RD ST LEES SUMMIT, MO 64063	CITY OF LEES SUMMIT PO BOX 1600 LEES SUMMIT, MO 64063-7600	PARKING LOT
10	109 SE 3RD ST LEES SUMMIT, MO 64063	GRONBERG GUY 1516 NE HARDAGE CIR LEES SUMMIT, MO 64086	RETAIL STORE
11	105 SE 3RD ST LEES SUMMIT, MO 64063	3DOUGLAS LLC 4705 CENTRAL ST KANSAS CITY, MO 64112	SHOP CENTER-NBHD
12	110 SE 3RD ST LEES SUMMIT, MO 64063	W. L. BEARS ENTERPRISE, INC. 1800 ALPIRE DR PLEASANT VALLEY, MO 64080	RETAIL STORE
13	PUBLIC OWNED LEES SUMMIT, MO 64063	CITY OF LEES SUMMIT PO BOX 1600 LEES SUMMIT, MO 64063-7600	PARKING LOT
14	209 SE DOUGLAS ST LEES SUMMIT, MO 64063	209 211 SE DOUGLAS LLC 209 SW 3RD ST LEES SUMMIT, MO 64063	OFF BLDG. <15000 SF
15	207 SE DOUGLAS ST LEES SUMMIT, MO 64063	CITY OF LEES SUMMIT PO BOX 1600 LEES SUMMIT, MO 64063-7600	FIRE STATION
16	111 SE 2ND ST LEES SUMMIT, MO 64063	111 2ND STREET LLC 407 SE GRAND AVE LEES SUMMIT, MO 64063	RETAIL STORE
17	110 SE GREEN ST LEES SUMMIT, MO 64063	REORGANIZED SCHOOL DIST NO 7 108 E 2ND ST LEES SUMMIT, MO 64063	SCHOOL-PUBLIC
18	100 SE 2ND ST LEES SUMMIT, MO 64063	SCHOOL DISTRICT 7 REORGANIZED 301 NE TUDOR RD LEES SUMMIT, MO 64086	SCHOOL-PUBLIC
19	200 SE 2ND ST LEES SUMMIT, MO 64063	RYAN HUGH H & MARGIE L 200 SE 2ND ST LEES SUMMIT, MO 64063	OFF BLDG. <15000 SF
20	202 SE 2ND ST LEES SUMMIT, MO 64063	WEEDA RAYMOND R & KAREN K-TR 25207 MILTON THOMPSON RD LEES SUMMIT, MO 64086	OFF BLDG. <15000 SF
21	206 SE 2ND ST LEES SUMMIT, MO 64063	WELLS REALTY LLC Address: 211 SE GRAND ST D LEES SUMMIT, MO 64063	OFF BLDG. <15000 SF
22	202 SE 3RD ST LEES SUMMIT, MO 64063	SOUTHWESTERN BELL TELEPHONE 1010 PINE ST ROOM 9E-L-01 ST. LOUIS, MO 63101	LOCAL ASSESSED UTIL
23	206 SE 3RD ST LEES SUMMIT, MO 64063	KC COMFORT PROPERTIES LLC 208 SE 3RD ST LEES SUMMIT, MO 64063	PARKING LOT

NOT FOR CONSTRUCTION

REV. NO.	DATE	REVISIONS DESCRIPTION	BY

EXISTING CONDITIONS

LEE'S SUMMIT DOWNTOWN MARKET
 GREEN STREET - 2ND STREET TO 3RD STREET
 LEE'S SUMMIT, MISSOURI

2023

drawn by: TS/TG/EW
 checked by: DV
 approved by: KPS
 QA/QC by: BM
 project no.: 022-00393
 drawing no.: L_EXC01_02200393
 date: 08/28/2023

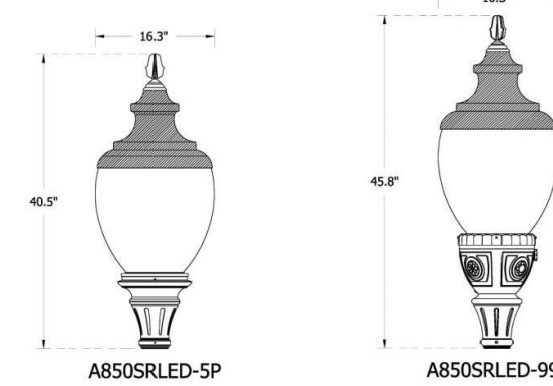
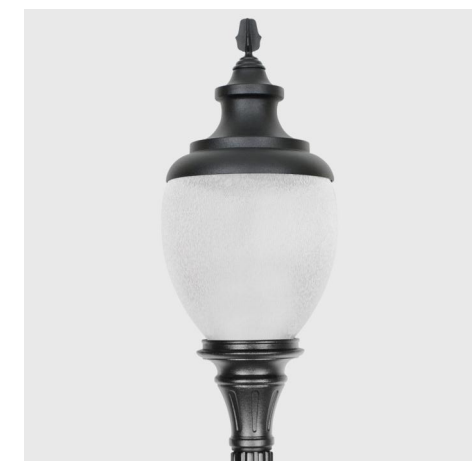
SHEET L100

Specification Sheet

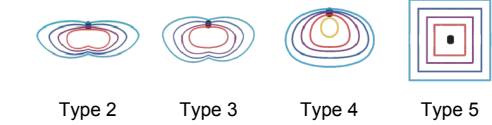
old town
A850SRLED

Project Name **CITY OF LEE'S SUMMIT, MISSOURI - PEDESTRIAN POST TOP LED**
 Type Catalog / Part Number **PT-A850LED-5P-24L-X-T5-MDL14-A-BKT**

Qty



Distribution Type



CCT - Color Temp (K)
 2,700K 3,000K 3,500K 4,000K 5,000K

7 Year Warranty



IP Rating



Certifications

Description

The A850SRLED Old Town luminaire blends form and function into a classic shape. It is supplied with a cast aluminum finish and a solid, cast aluminum roof which includes optimized heat sinks to provide maximum life and performance for the LED light sources. The acorn is sealed to the cast aluminum roof to provide a moisture free and bug-free optics chamber for the LED light source.
 EPA: 1.21 (#)
 WEIGHT: 43 LBS

Features

Mounting Configuration

1W: Wall Mount
 1A: 1 Arm Mount
 2A: 2 Arm Mount @ 180°
 2APT: 2 Arm @ 180° & Post Top
 3A: 3 Arms @ 90°
 3APT: 3 Arm @ 120° & Post Top
 4A: 4 Arms @ 90°
 4APT: 4 Arm @ 90° & Post Top
 1AM: 1 Arm Mid-Mount
 2AM: 2 Arm Mid-Mount @ 180°
 450RB: Pier Base

Optional Control Receptacle

RT: 7-Pin control receptacle only
 SRR7: Roof Mounted 7-Pin Control Receptacle Only

Optional Control

PE: Twist-Lock Photocontrol (120V-277V)
 PE4: Twist-Lock Photocontrol (347V-480V)
 SC: Shorting Cap
 PEC: Electronic Button Photocontrol (120V-277V)
 PEC4: Electronic Button Photocontrol (480V)

Optional Fuse

FHD: Double Fuse and Holder

Optional House Side Shield

HSS: 120° House Side Shield
 BLOC: Back Light Optical Control

Optional Fixed Dimming Resistor Board

FDRB: Fixed Dimming Resistor Board

Sternberg Lighting

555 Lawrence Ave. Roselle, IL 60172, US
 contact@sternberglighting.com
 1 847 298-3630
 sternberglighting.com www.sternberglighting.com/products411

Sternberg Lighting reserves the right to make changes to this product at any time without prior notice and such modification shall be effective immediately.
 2023.04.25 copyright © 2023 Sternberg Lighting

1 / 11

Date: _____ Customer: _____
 Project: _____
 Type: _____ Qty: _____



Olivo Medio LED
Universal Mount



Order Code: OLML _____

Series	Series	Height	Finish	Options
OLML	Olivo Medio LED			
Optics	S09 Spot, 90° S20 Spot, 20° F40 Flood, Medium, 4ft F80 Flood, 7ft ASM Asymmetric (no SLH or SLV option)			
Mounting	U Universal T1 Single Pole Top			
Light Engine	2G350 15W / 132lm 2G525 22W / 191lm 2G700 31W / 263lm 2G105 40W / 344lm			* Based on F80 distribution and 3000K CCT.
CCT	27° 2700K 301 3000K 35° 3500K 40 4000K 50° 5000K			1 Dark Sky approved with (ds) option only. 2 Consult factory.
Finish	WH White BK Black BL Semi-Matte Black BZ Bronze SV Silver SP Specify Premium Color			
Voltage	UNV 120-277V 120V 208 208V 240 240V 277 277V			
Options	DS2 Dark Sky On TR Option DM Dimming, 0-10V SLH Spread Lens Horizontal (fixed) SLV Spread Lens Vertical (fixed) HL503.5 High - low switching, low output 50% HX4 Micro Hexcell Honey Comb Louver CF Color Filter (consult factory)			2 IDA approved with (DS) option only and 3000K CCT. 3 Only available with 120V, 240V or 277V. 4 Cannot be combined with SLH, SLV, or ASM options. 5 Cannot be combined with DM option.

Product Modifications
 Please list modification requirements for review by factory.

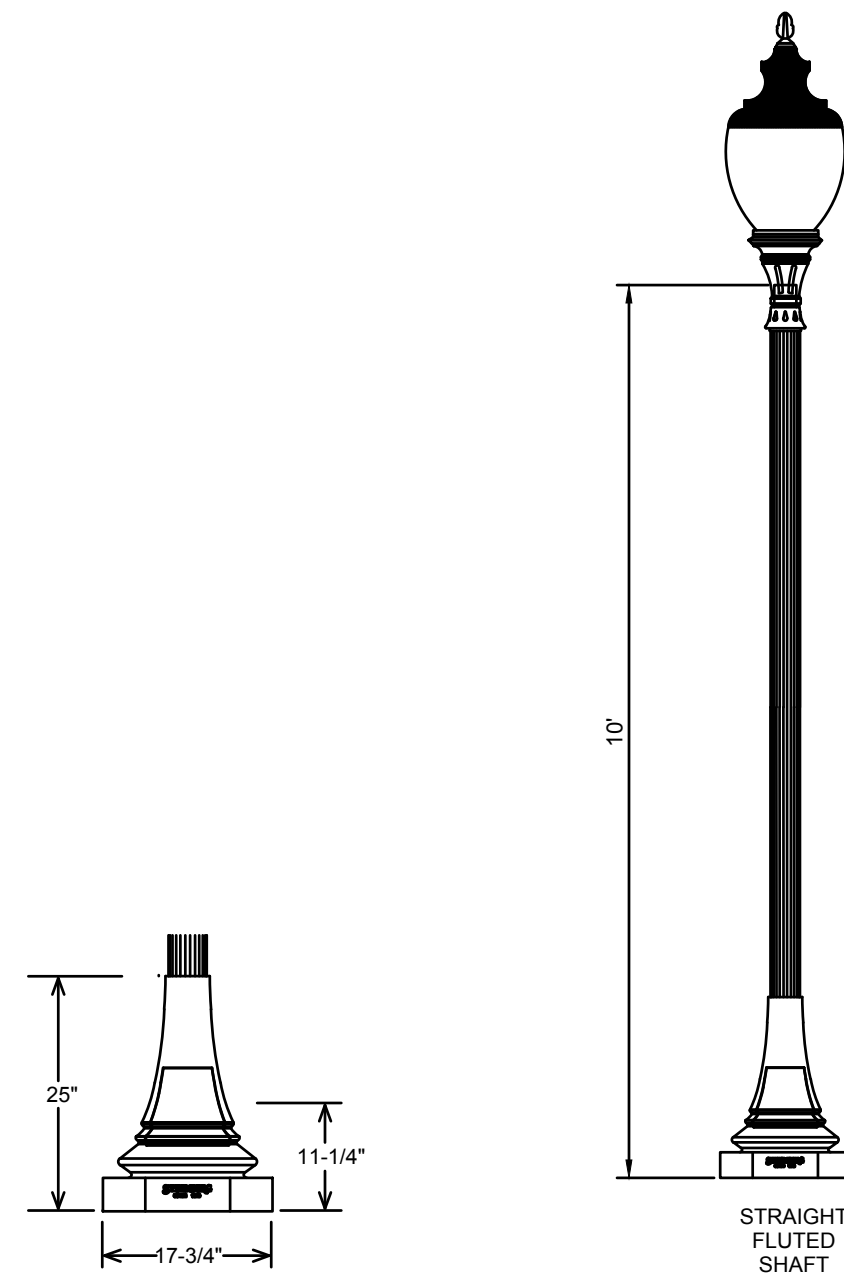
Approvals

Date: _____

Selux Corporation © 2023. T 845-834-1400, 800-735-8927, F 845-834-1401, www.selux.us
 In a continuing effort to offer the best product possible, we reserve the right to change, without notice, specifications or materials that in our opinion will not affect the function of the product. Specification sheets found at www.selux.us are the most recent versions and supersede all other printed or electronic versions.

Page 1 of 8
 Rev. 03/2023
 OLML-U_SS_3.2

1 LIGHT POLE/FIXTURE DETAILS
 SCALE: NOT TO SCALE



REFER TO SCHEDULE FOR ROTATION AND QUANTITY

REFER TO SCHEDULE FOR ROTATION AND QUANTITY

LIGHTING FIXTURE SCHEDULE

SYMBOL	TYPE	DESCRIPTION	MANUFACTURER AND MODEL	LAMPS	LUMENS	COLOR TEMP / CRI	DRIVER / BALLAST	VOLTAGE / WATTAGE	LOCATION
◆	P5	LED PEDESTRIAN POST TOP ON 10'-0" POLE AND CONCRETE BASE. SEE NOTE A, B, AND C BELOW.	STERNBERG LIGHTING# PT-A850LED-5P-24L-35-T5-MDL14-A-BKT	LED	10248	3500K / 80	0-10V DIMMING	MVOLT 87W	PEDESTRIAN WALKWAY
○	A	LED FLOOD LIGHT ASYMMETRIC DISTRIBUTION WITH 40 DEGREE TILT ON 25'-0" POLE AND CONCRETE BASE. SEE NOTE A AND B BELOW.	SELUX# OLML-ASM-T1-2G105-35-BK-U-DM-SLH POLE: O-AT535-25-BK	LED	3671	3500K / 80	0-10V DIMMING	MVOLT 46W	STREET
○	B	LED DOUBLE HEAD FLOOD LIGHT WITH 40 DEGREE TILT ON 20'-0" POLE AND CONCRETE BASE. SEE NOTE A AND B BELOW.	SELUX# OLML-F40-U-2G105-35-BK-U-DM-SLH POLE: O-AT535-20-BK	LED	3794	3500K / 80	0-10V DIMMING	MVOLT 92W	PEDESTRIAN WALKWAY
○	C	LED DOUBLE HEAD FLOOD LIGHT WITH 40 DEGREE TILT ON 25'-0" POLE AND CONCRETE BASE. SEE NOTE A AND B BELOW.	SELUX# OLML-F40-U-2G105-35-BK-U-DM-SLH POLE: O-AT535-25-BK	LED	3794	3500K / 80	0-10V DIMMING	MVOLT 92W	PEDESTRIAN WALKWAY
---	F	LED MESH LIGHTING WITH ACRYLIC CYLINDER.	CARL STAHL# X-LED CUSTOM: X-LED-DOT-B-RGB-	LED		3500K / 80	0-10V DIMMING	MVOLT	PEDESTRIAN WALKWAY
---	G	LED ROPE LIGHT WITH FROSTED LENS MOUNTED IN FLEXIBLE ALUMINUM CHANNEL.	KELVIX# TX3RGBW-WR-24 CHANNEL-CH-604-2-FR-CP-EC	LED	212LM/FT	4000K / 80	0-10V DIMMING	24VOLT 6W/FT	PEDESTRIAN WALKWAY
◆	D	4.5" DIA. x 31.5" LED BOLLARD WITH ALUMINUM FINISH. SEE NOTE A AND B BELOW.	LOUIS POULSEN# FLINDT#10000162762	LED	784	4000K / 80	0-10V DIMMING	MVOLT 15W	PEDESTRIAN WALKWAY

NOTES:
 A. PROVIDE ALL COMPONENTS TO MAKE A COMPLETE ASSEMBLY. THIS WOULD INCLUDE, BUT NOT BE LIMITED TO, ARM, MOUNTING BRACKETS, POLE BASE COVER, ANCHOR BOLTS, TEMPLATE, BASE, HAND HOLE, SEPARATE CIRCUIT OUTLET, ETC.
 B. PROVIDE CONCRETE BASE, PER DETAIL.
 C. NO EQUALS SHALL BE ALLOWED FOR THIS FIXTURE, UNLESS APPROVED BY OWNER.

Specification sheet

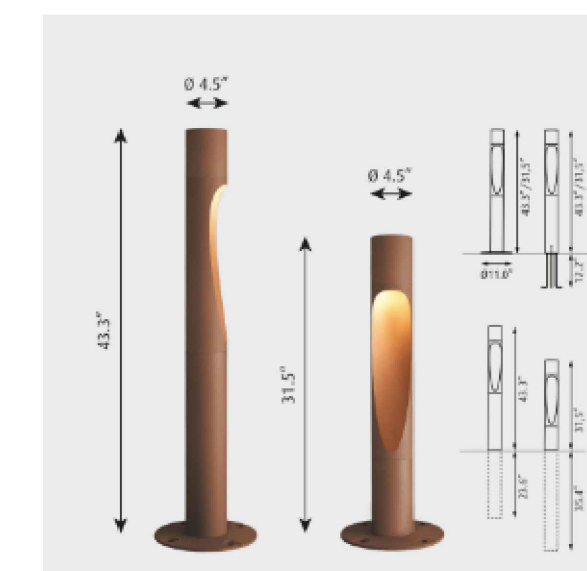
1/3

FLINDT BOLLARD

Project name:

Project type:

Notes:

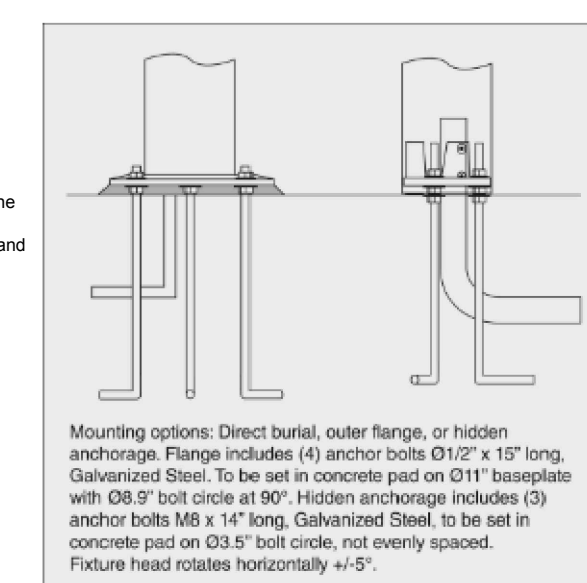


Design

Christian Flindt

Product description

Beautifully crafted slender post with a curved surface that is gently illuminated. Top section conceals downward facing LEDs that are positioned for wide distribution. Two horizontal connection lines underline the three parts of the bollard. A facet increases the visibility of the connection lines. Available in two heights, 43.3 IN and 31.5 IN. Available in three different mounting methods, with an 11 inch base plate and visible anchor bolts, with internally hidden anchor bolts, or direct burial in soil or gravel. Part of a family.



Variant options

Dimension	Color	Mounting	Light source	Lumen	Voltage frequency
31.5 IN	Corlen color	Post winchorage unit	LED 3000K	707	120-277V/60HZ
43.3 IN	Natural paint aluminum	Post w/base plate	LED 4000K	757	
		Post w/direct burial		762	
				784	

Specification notes

a. Direct burial mounting only available with 43.3" size.

© Louis Poulsen 2019

louispoulsen.com

SITE LIGHTING DETAILS

LEE'S SUMMIT DOWNTOWN MARKET
 GREEN STREET - 2ND STREET TO 3RD STREET

LEE'S SUMMIT, MO

REVISIONS DESCRIPTION

DATE

REV. NO.

2023

SHEET
 E101

NOT FOR CONSTRUCTION

BY

REVISIONS DESCRIPTION

DATE

REV. NO.

2023

LEE'S SUMMIT, MO

SHEET
 E101

NOT FOR CONSTRUCTION

BY

REVISIONS DESCRIPTION

DATE

REV. NO.

2023

LEE'S SUMMIT, MO

SHEET
 E101

NOT FOR CONSTRUCTION

BY

REVISIONS DESCRIPTION

DATE

REV. NO.

2023

LEE'S SUMMIT, MO

SHEET
 E101

NOT FOR CONSTRUCTION

BY

REVISIONS DESCRIPTION

DATE

REV. NO.

2023

LEE'S SUMMIT, MO

SHEET
 E101

NOT FOR CONSTRUCTION

BY

REVISIONS DESCRIPTION

DATE

REV. NO.

2023

LEE'S SUMMIT, MO

SHEET
 E101

NOT FOR CONSTRUCTION

BY

REVISIONS DESCRIPTION

DATE

REV. NO.

2023

LEE'S SUMMIT, MO

SHEET
 E101

NOT FOR CONSTRUCTION

BY

REVISIONS DESCRIPTION

DATE

REV. NO.

2023

LEE'S SUMMIT, MO

SHEET
 E101

NOT FOR CONSTRUCTION

BY

REVISIONS DESCRIPTION

DATE

REV. NO.

2023

LEE'S SUMMIT, MO

SHEET
 E101

NOT FOR CONSTRUCTION

BY

REVISIONS DESCRIPTION

DATE

REV. NO.

2023

LEE'S SUMMIT, MO

SHEET
 E101

NOT FOR CONSTRUCTION

BY

REVISIONS DESCRIPTION

DATE

REV. NO.

2023

LEE'S SUMMIT, MO

SHEET
 E101

NOT FOR CONSTRUCTION

BY

REVISIONS DESCRIPTION

DATE

REV. NO.

2023

LEE'S SUMMIT, MO

SHEET
 E101

NOT FOR CONSTRUCTION

BY

REVISIONS DESCRIPTION

DATE

REV. NO.

2023

LEE'S SUMMIT, MO

SHEET
 E101

NOT FOR CONSTRUCTION

BY

REVISIONS DESCRIPTION

DATE

REV. NO.

2023

LEE'S SUMMIT, MO

SHEET
 E101

NOT FOR CONSTRUCTION

BY

REVISIONS DESCRIPTION

DATE

REV. NO.

2023

LEE'S SUMMIT, MO

SHEET
 E101

NOT FOR CONSTRUCTION

BY

REVISIONS DESCRIPTION

DATE

REV. NO.

2023

LEE'S SUMMIT, MO

SHEET
 E101

NOT FOR CONSTRUCTION

BY

REVISIONS DESCRIPTION

DATE

REV. NO.

2023

LEE'S SUMMIT, MO

SHEET
 E101

NOT FOR CONSTRUCTION

BY

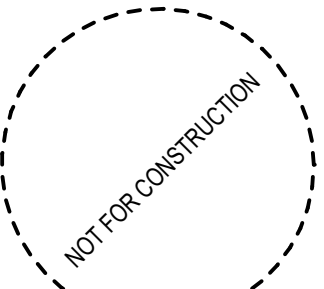
REVISIONS DESCRIPTION

DATE

REV. NO.

2023

LEE'S SUMMIT, MO



PROGRESS PRINT



- LEGEND**
- CIRCULATION
 - FARMERS' MARKET
 - KITCHEN
 - RESTROOM
 - SUPPORT



CITY OF LEE'S SUMMIT
LEE'S SUMMIT - MARKET PLAZA
 Lee's Summit, MO 64063

DESCRIPTION	DATE
PROJECT NO:	1822R21006
STATUS:	DESIGN DEVELOPMENT
DATE:	08/29/2023
DRAWN BY:	Author
CHECKED BY:	Checker

© GLMV Architecture, Inc.
 All work herein is the property of GLMV Architecture, Inc. and is not to be copied or used in any way without the express written consent of GLMV Architecture, Inc.

CONTEXTUAL FLOOR PLAN

PLOT DATE: 7/27/2023 9:17:10 PM
 FILE PATH: \\server\cadd\17825621\006_Lee's Summit Market Plaza\Single Story.rvt

ROOF LEGEND	
	AREA NOT IN SCOPE OF WORK U.N.O.
	ROOF CRICKET
	EXPANSION JOINT LOCATION
	INDICATES DIRECTION OF FLOW / ROOF SLOPE
	TPO ROOF
	STANDING SEAM METAL ROOF



PROGRESS PRINT

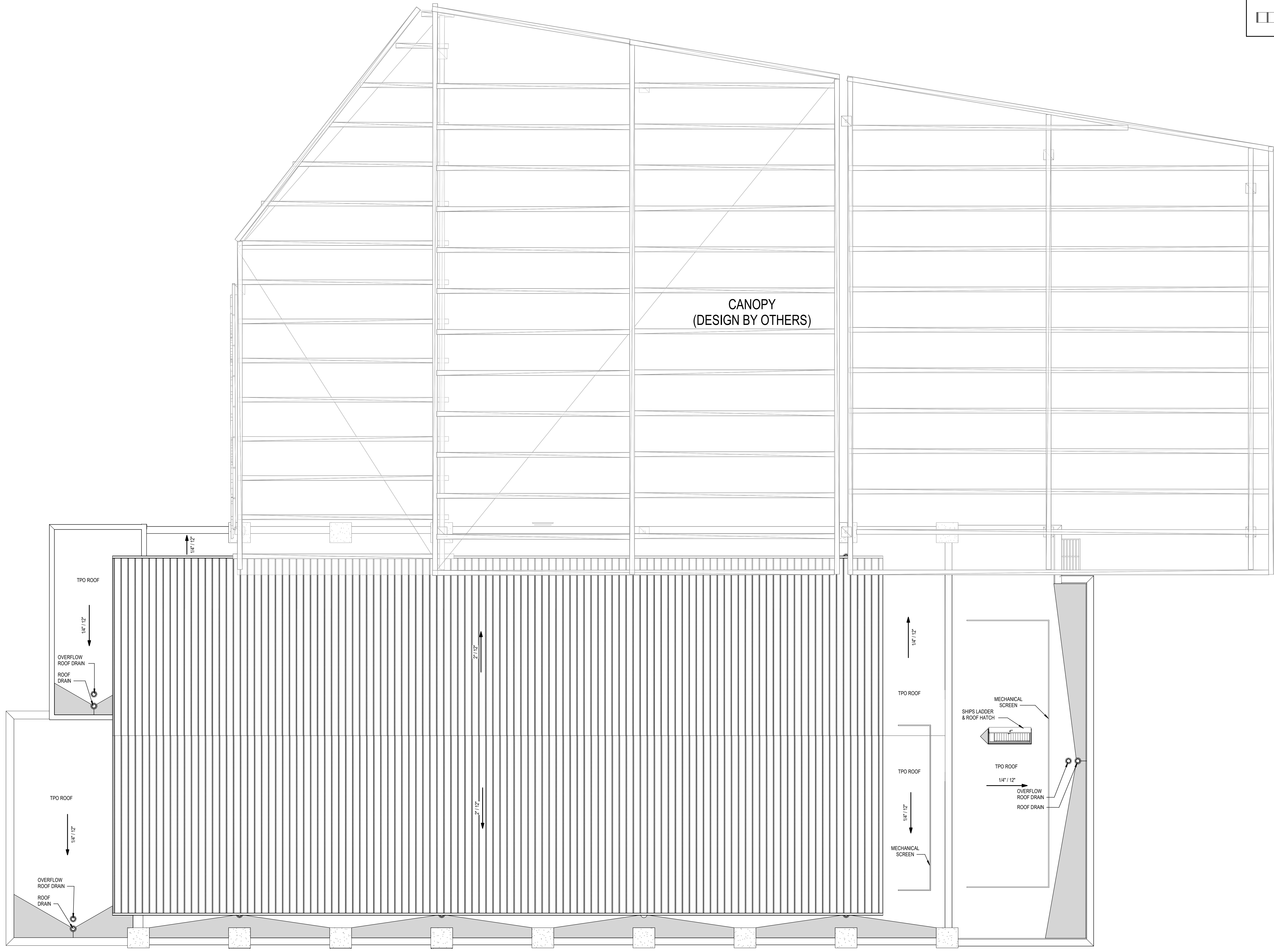
CITY OF LEE'S SUMMIT
LEE'S SUMMIT - MARKET PLAZA
 Lee's Summit, MO 64063

DESCRIPTION	DATE
PROJECT NO:	1822SR21006
STATUS:	DESIGN DEVELOPMENT
DATE:	08/29/2023
DRAWN BY:	Author
CHECKED BY:	Checker

© GLMV Architecture, Inc.
 All rights reserved. In the property of GLMV Architecture.
 This work is not to be copied or used in any way without
 the express written consent of GLMV Architecture, Inc.

ROOF PLAN

A-121

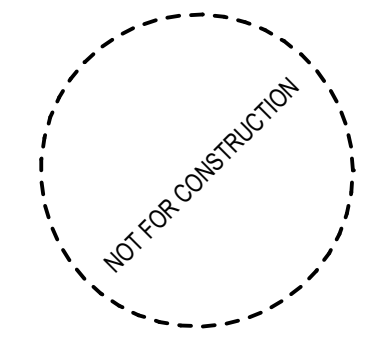


A ROOF PLAN
 1/8" = 1'-0"

PLOT DATE: 7/27/2023 9:17:14 PM
 FILE PATH: \\adobe\adobe\Drawings\1822SR21006 - Lee's Summit Market Plaza - Single Story.rvt



GLMVArchitecture



PROGRESS PRINT



1 **SOUTHWEST ELEVATION**
1/8" = 1'-0"



2 **NORTHEAST ELEVATION**
1/8" = 1'-0"



3 **NORTHWEST ELEVATION**
1/8" = 1'-0"

- 1. BRICK - MODULAR BERWICK BLEND
- 2. GLASS
- 3. STOREFRONT - DARK BRONZE
- 4. CAST STONE
- 5. OVERHEAD GARAGE DOOR
- 6. FIBER CEMENT PANEL
- 7. STANDING SEAM METAL ROOF
- 8. ARCHITECTURAL PERFORATED BACK LIT RAINSCREEN
- 9. PAINTED STEEL - DARK BRONZE
- 10. EXTRUDED ALUMINUM - LIGHT CHERRY WOOD GRAIN
- 11. CHANGEABLE ART INSTALLATION
- 12. SIGNAGE
- 13. MECHANICAL SCREEN

CITY OF LEE'S SUMMIT
LEE'S SUMMIT - MARKET PLAZA
Lee's Summit, MO 64063

DESCRIPTION	DATE
PROJECT NO.	1822R21098
STATUS	DESIGN DEVELOPMENT
DATE	08/29/2023
DRAWN BY:	Author
CHECKED BY:	Checker

EXTERIOR ELEVATIONS

A-201

PLT DATE: 7/26/2023 11:59:40 AM
FILE PATH: A:\work\Lee's Summit\Market Plaza\Lee's Summit Market Plaza - Signage - Story.dwg

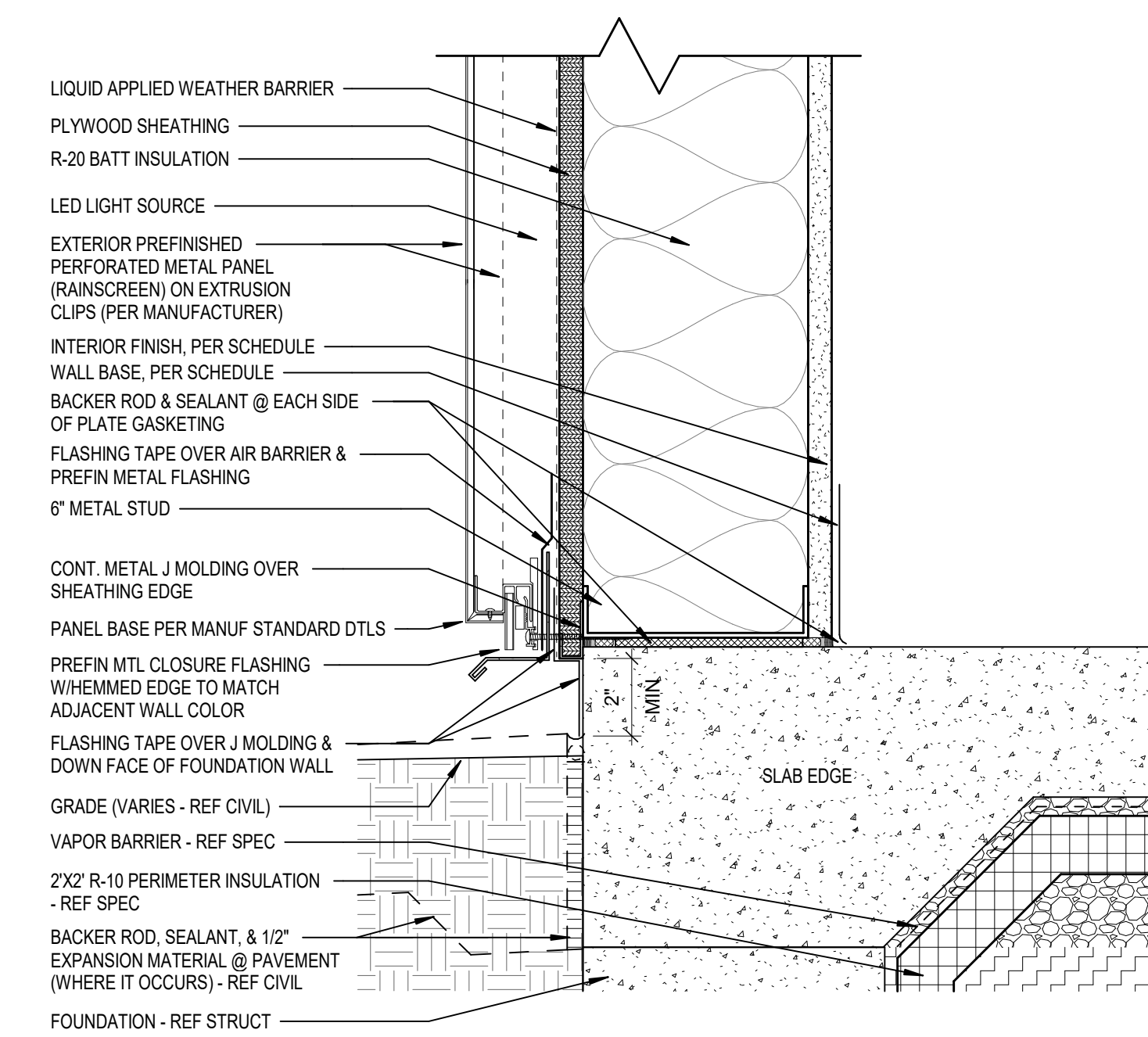


3 NORTHWEST ELEVATION W/O CANOPY
1/8" = 1'-0"



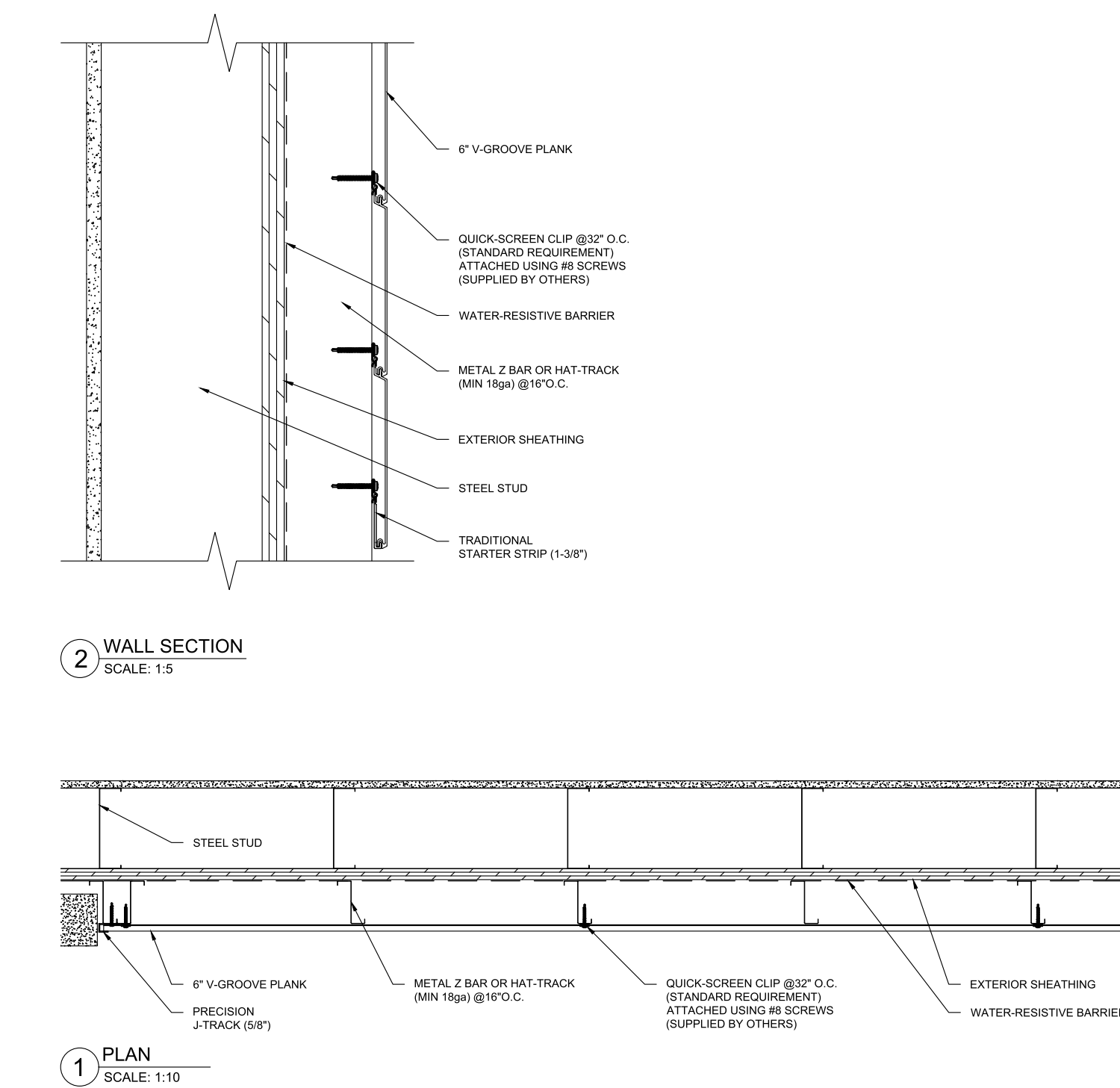
4 SOUTHEAST ELEVATION W/O CANOPY
1/8" = 1'-0"

- | | | |
|---|--|--|
| 1. BRICK - MODULAR BERWICK BLEND | 5. OVERHEAD GARAGE DOOR | 9. PAINTED STEEL - DARK BRONZE |
| 2. GLASS | 6. FIBER CEMENT PANEL | 10. EXTRUDED ALUMINUM - LIGHT CHERRY WOOD GRAIN |
| 3. STOREFRONT - DARK BRONZE | 7. STANDING SEAM METAL ROOF | 11. CHANGEABLE ART INSTALLATION |
| 4. CAST STONE | 8. ARCHITECTURAL PERFORATED BACK LIT RAINSCREEN | 12. SIGNAGE |
| | | 13. MECHANICAL SCREEN |



5 PERFORATED METAL RAINSCREEN DETAIL
3" = 1'-0"

EXTRUDED ALUMINUM DETAILS



DESCRIPTION	DATE
PROJECT NO.	1825R21006
STATUS:	DESIGN DEVELOPMENT
DATE:	08/29/2023
DRAWN BY:	Author
CHECKED BY:	Checker

© GLMV Architecture, Inc.
 All rights reserved. No part of this document may be reproduced, stored in a retrieval system, or transmitted in any form or by any means, electronic, mechanical, photocopying, recording, or by any information storage and retrieval system, without the prior written consent of GLMV Architecture, Inc.

EXTERIOR ELEVATIONS