

Lee's Summit Resource Recovery Park

Park Master Plan

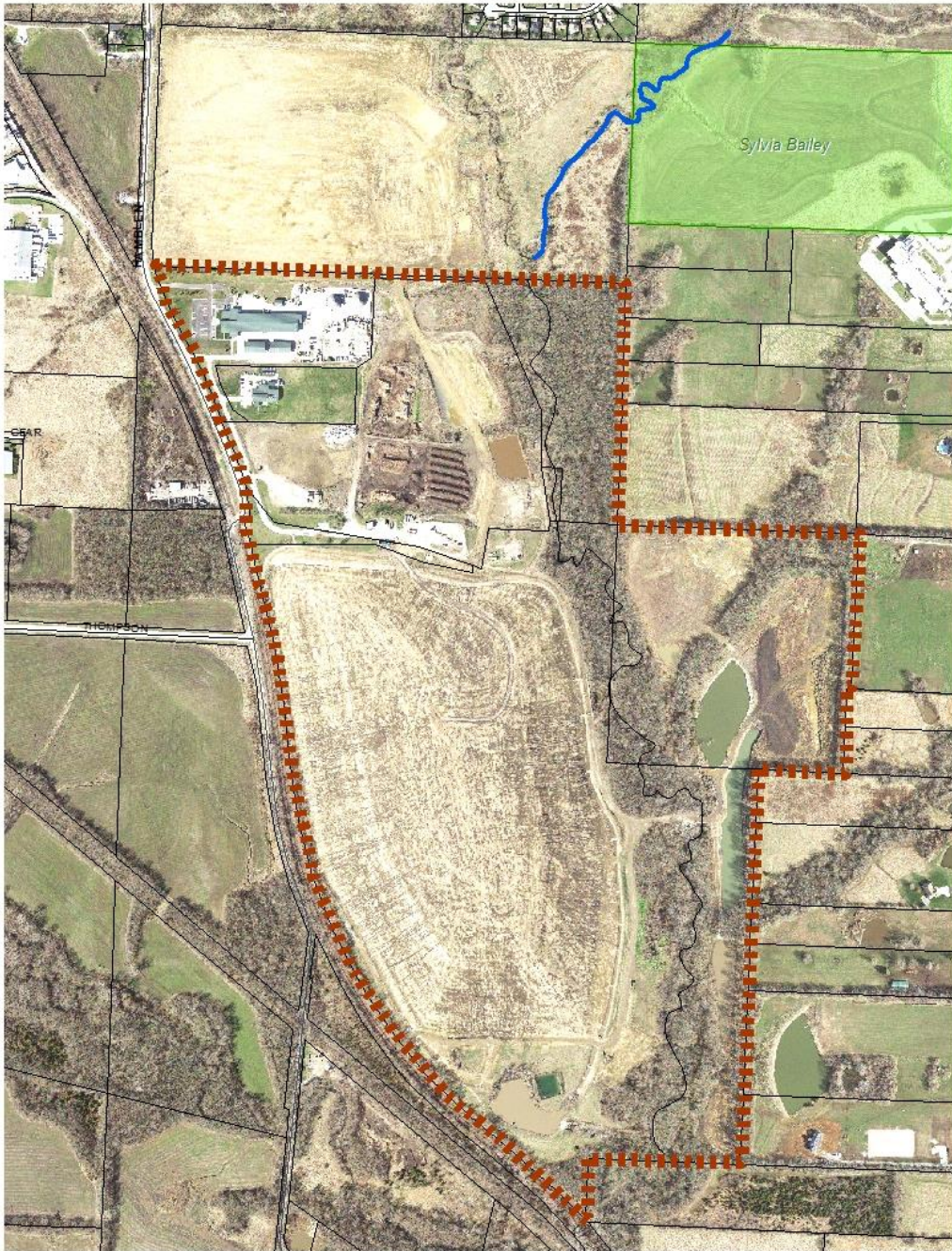
City Council & Park Board
Joint Meeting
October 11, 2022



LS Resource Recovery Park-Facts

- Landfill closed in April 2019 after 37 years of operation
- Total Site is approximately 263 acres- 80 acres approximately is landfill “dome”
- City has partnered with private contractor to construct a processing facility and recycling/PDA



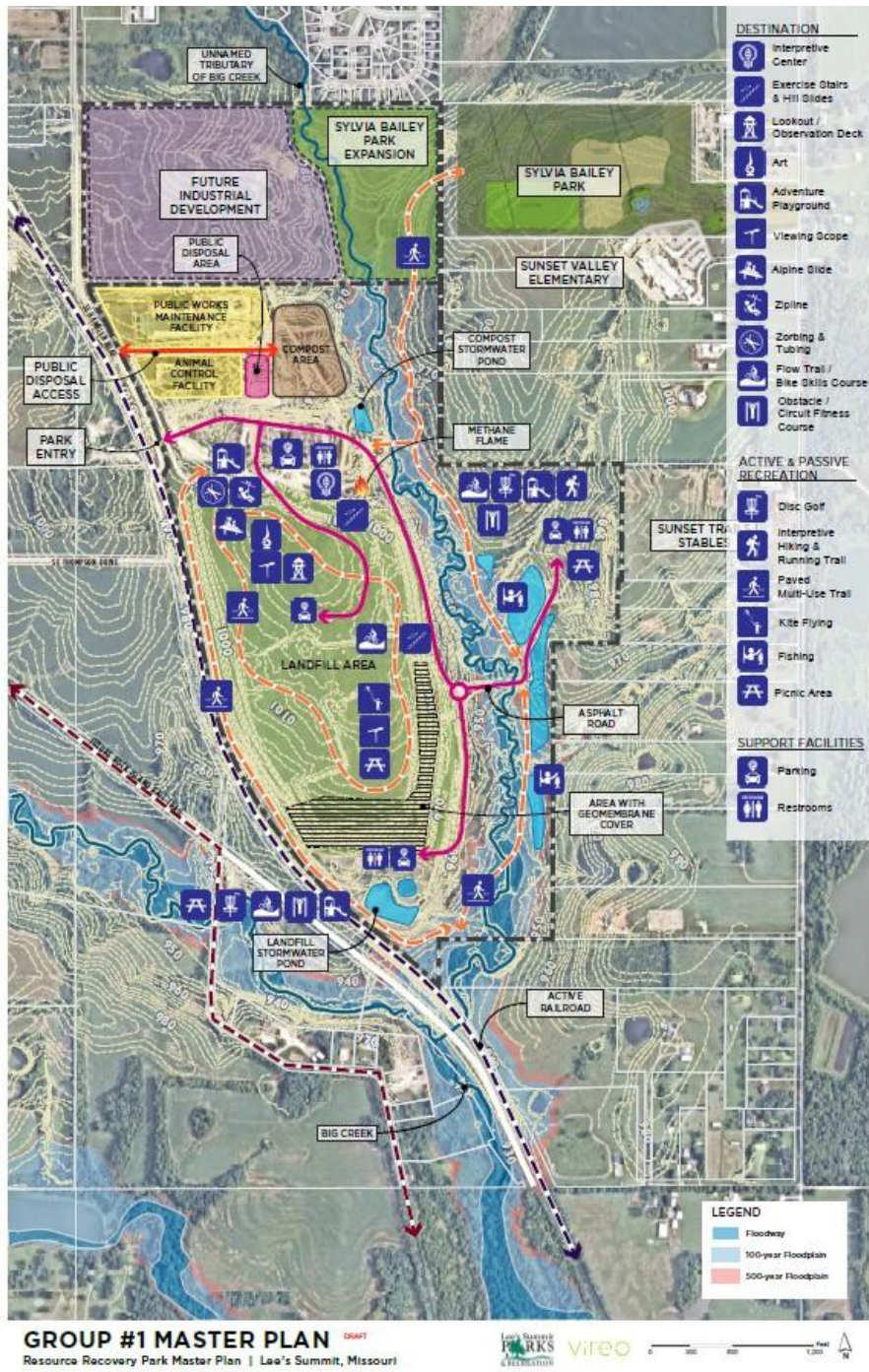


Discovery Phase

- MDNR Meeting- April 2019
- Site visits to Resource Recovery Park- May 2019
- Site Tours- August-October 2019
 - Palm Beach, Florida
 - Virginia Beach, Virginia
 - Cedar Rapids, Iowa
- SWOT Analysis/Internal Staff Review- Oct 2019
- Park Master Planning- Vireo- Sept. 2020-July 2021
- MDNR master plan presentation June 2021



Park Master Planning Phase



- LSPR Selected Vireo and SCS Engineers as consultants on master planning
- Both with experience with landfill to park end use studies and environmental planning. SCS extensive knowledge specific to this site
- Park amenities considered/planned on landfill and non-landfill areas
- Multi phase study-internal with city and park staff input
- Coordinated with City of Lee's Summit Public Works and potential private landfill operator of processing facility





Vision and Goals for Park Developed by Project Committee



Project Opportunities

- Tourism opportunities
- Unique environmental learning opportunity
- Provide diversity of passive and active recreational opportunities
- 360 views of surrounding area from top of dome
- Repurposing 'brownfield' site into landmark reclamation project
- Connect to existing regional and local trails
- Connect to Sylvia Bailey Park



Project Challenges

- Adjacent public disposal and compost activities
- Potential for compost odors
- Hamblen Road access, busy with truck and industrial traffic
- Location of methane vent pipes, uneven terrain, and differential settlement
- Potential need for on site staffing and risk
- Shallow footing depth-no penetration of geomembrane cover
- stormwater management to minimize erosion





PARK ENTRY

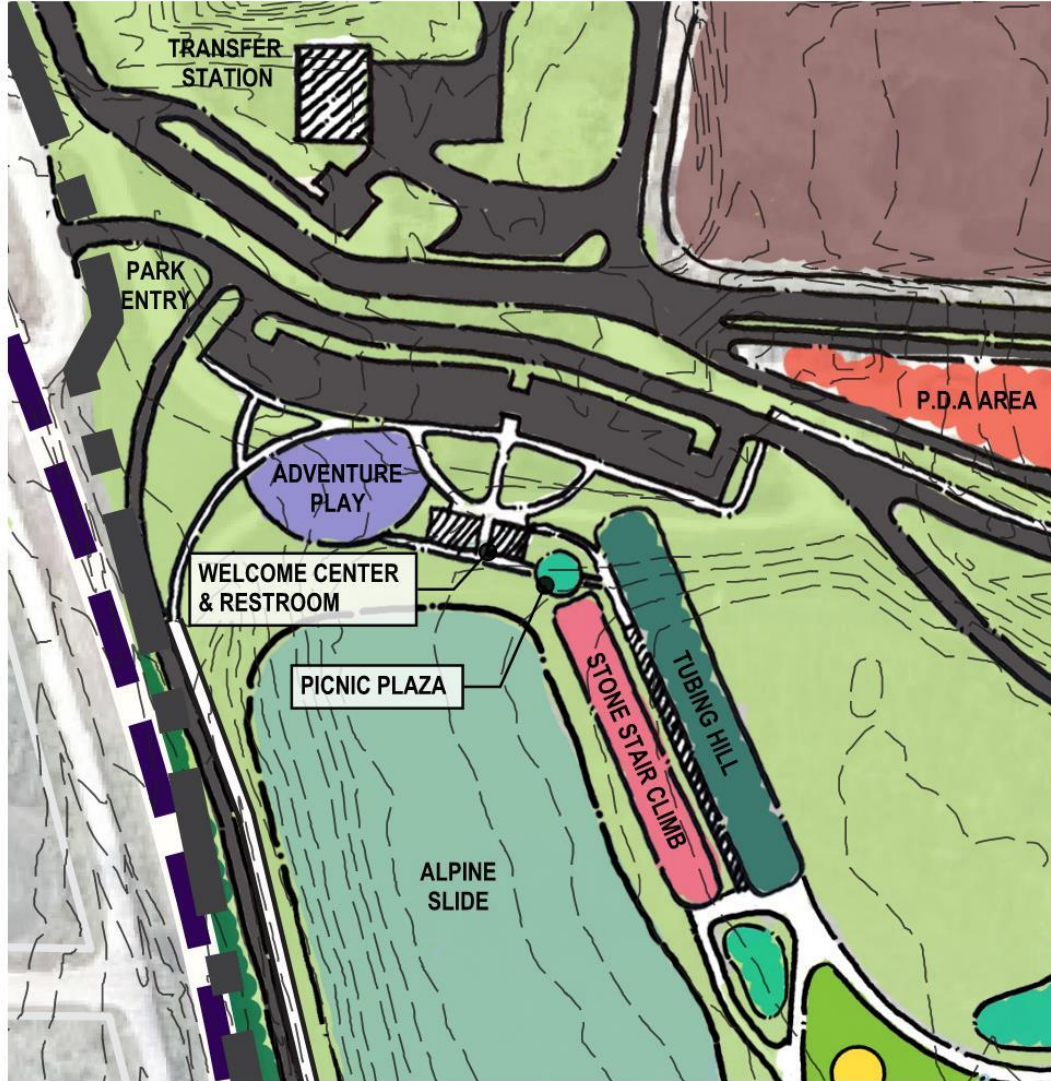
LANDFILL CAP

'BAKER'S DOZEN' AREA

AREA SOUTH OF LANDFILL



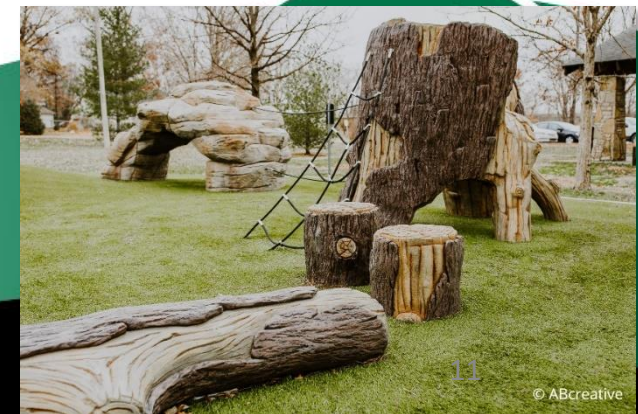
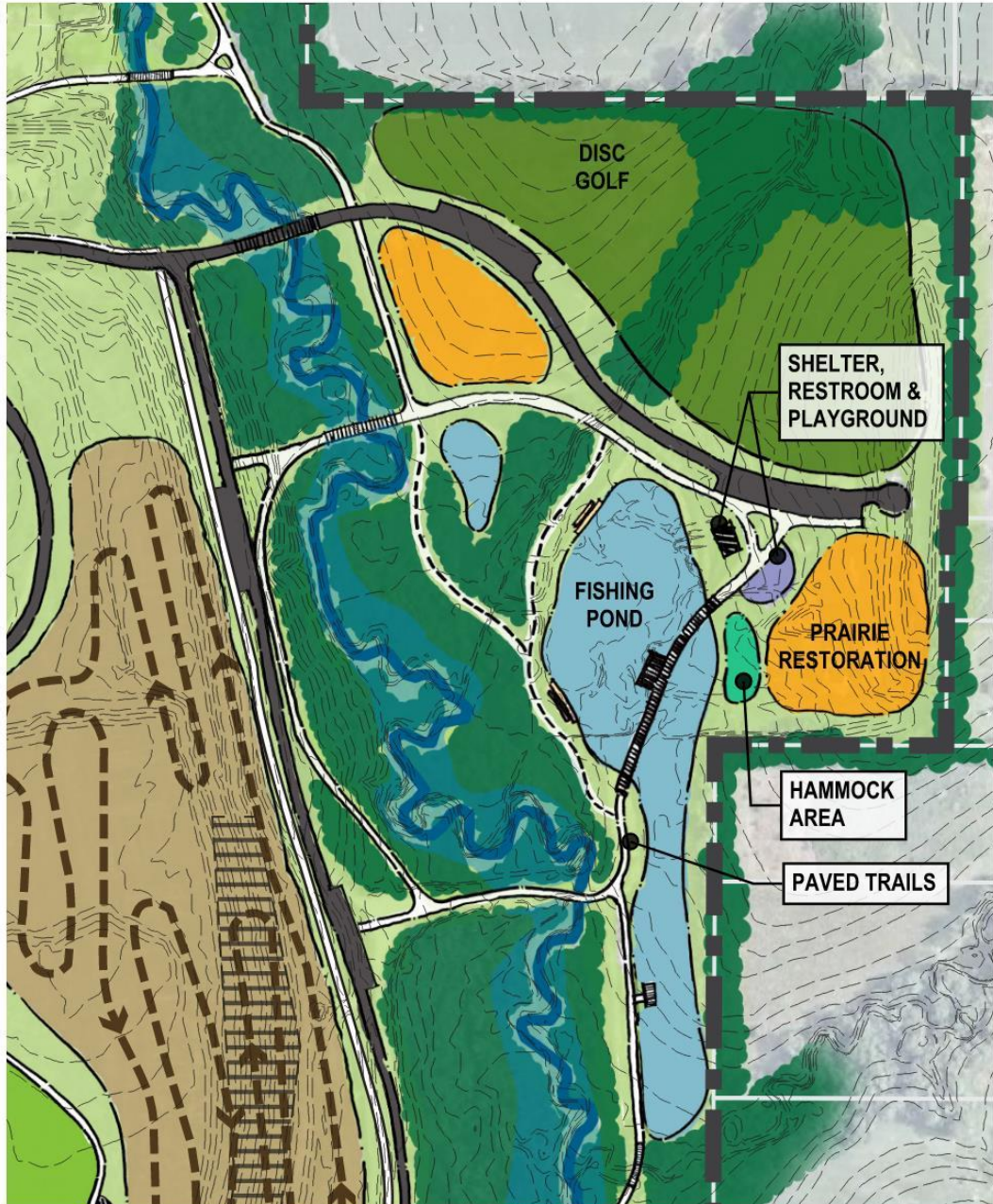
PARK ENTRY AND LANDFILL PROGRAMMING



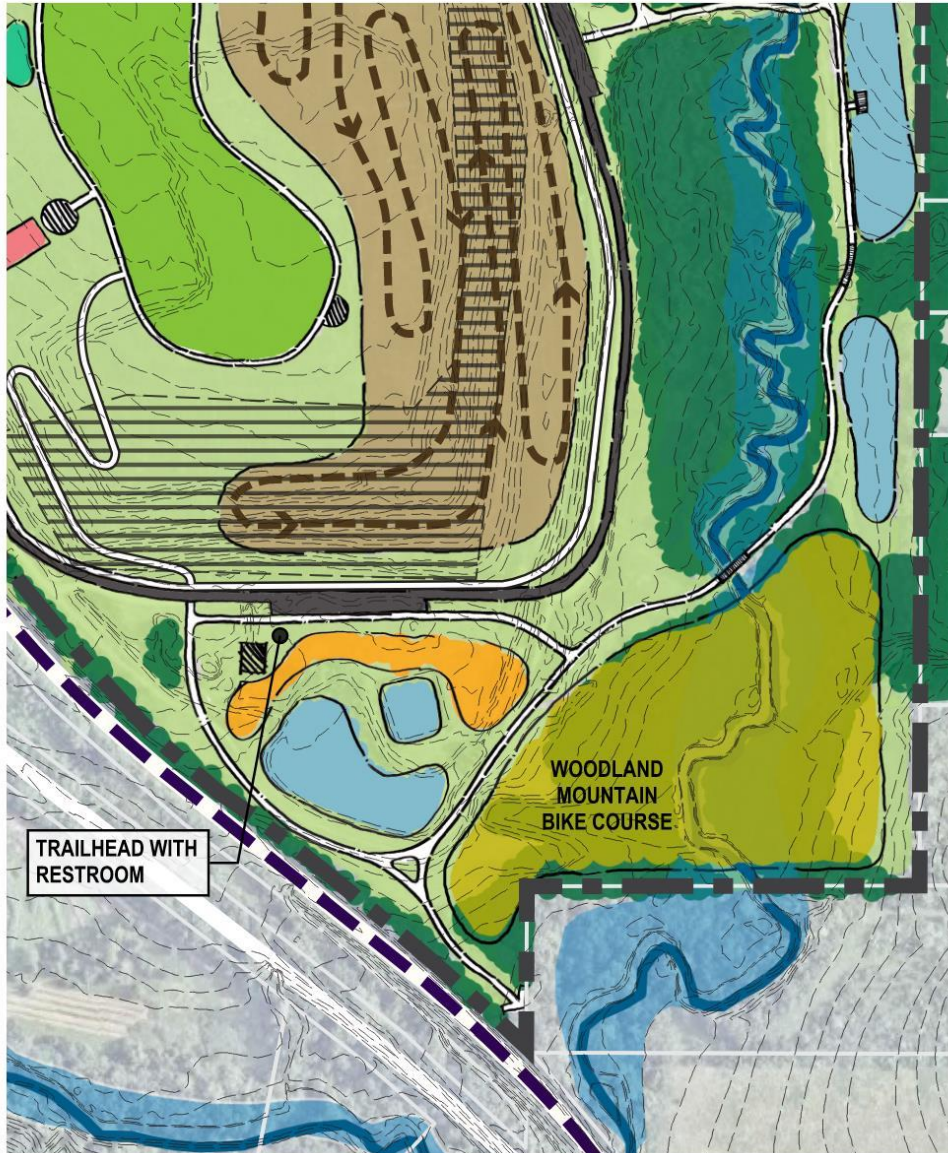
LANDFILL PROGRAMMING



BAKERS DOZEN PROGRAMMING



SOUTH LANDFILL PROGRAMMING



Next Step

- Finalize coordination efforts with processing facility operator adjacent to park
- Present findings to LS City Council
- Explore funding options if project is able to move forward
- Establish agreements and secure approvals
- Seek public input on possible amenities
- Determine potential timeline for implementation

