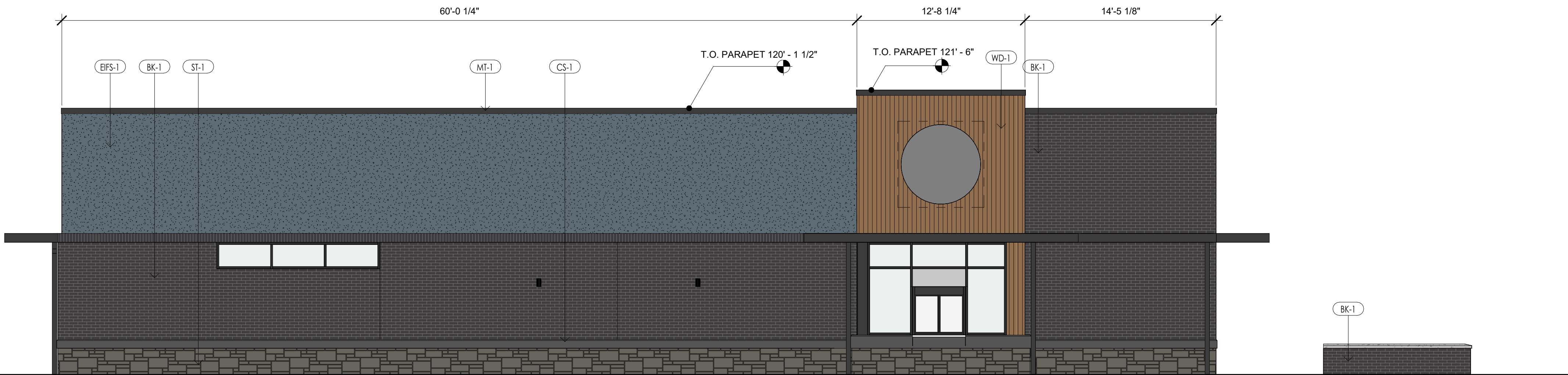
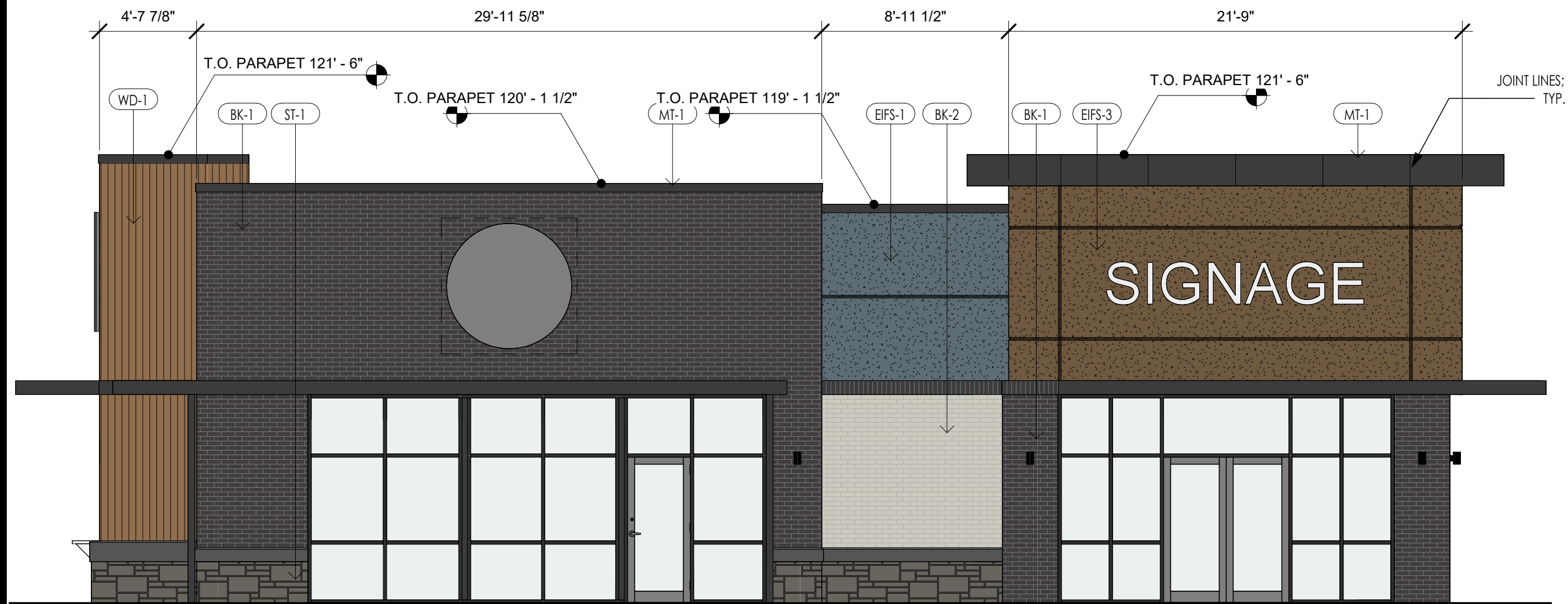


EXTERIOR FINISH LEGEND				
MARK	DESCRIPTION	MANUFACTURER	MODEL/COLOR	COMMENTS
BK-1	FULL BRICK	MUTUAL MATERIALS	COAL CREEK	SABLE MORTAR 770
BK-2	FULL BRICK	INTERSTATE BRICK	FEWTER	---
CMU-1	CONCRETE MASONRY UNIT	---	COLOR TO MATCH BLDG	INTERIOR WALL SURFACES OF THE TRASH ENCLOSURE ARE TO BE SMOOTH, SEALED AND WASHABLE. APPLY ONE COAT EPOXY FILLER/SEALER AND ONE COAT GLOSS POLYURETHANE.
CS-1	CAST STONE TRIM UNIT	MIDWEST CAST STONE	6A	---
EFBS-1	BFS	DRYVIT	GRANITE GRAY	---
EFBS-3	BFS	DRYVIT	COLOR TO MATCH	MATCH NICHHA VINTAGEWOOD AWP-1818 "CEDAR" #EPC762F
MT-1	METAL	---	FLAT BLACK	---
ST-1	FULL STONE	LAMINA STONE	SHELBY	---
WD-1	VERTICAL SIDING	IDENTITY WOOD	EXTRA CRISPY	5/8" THICK X 7 1/4" WIDE

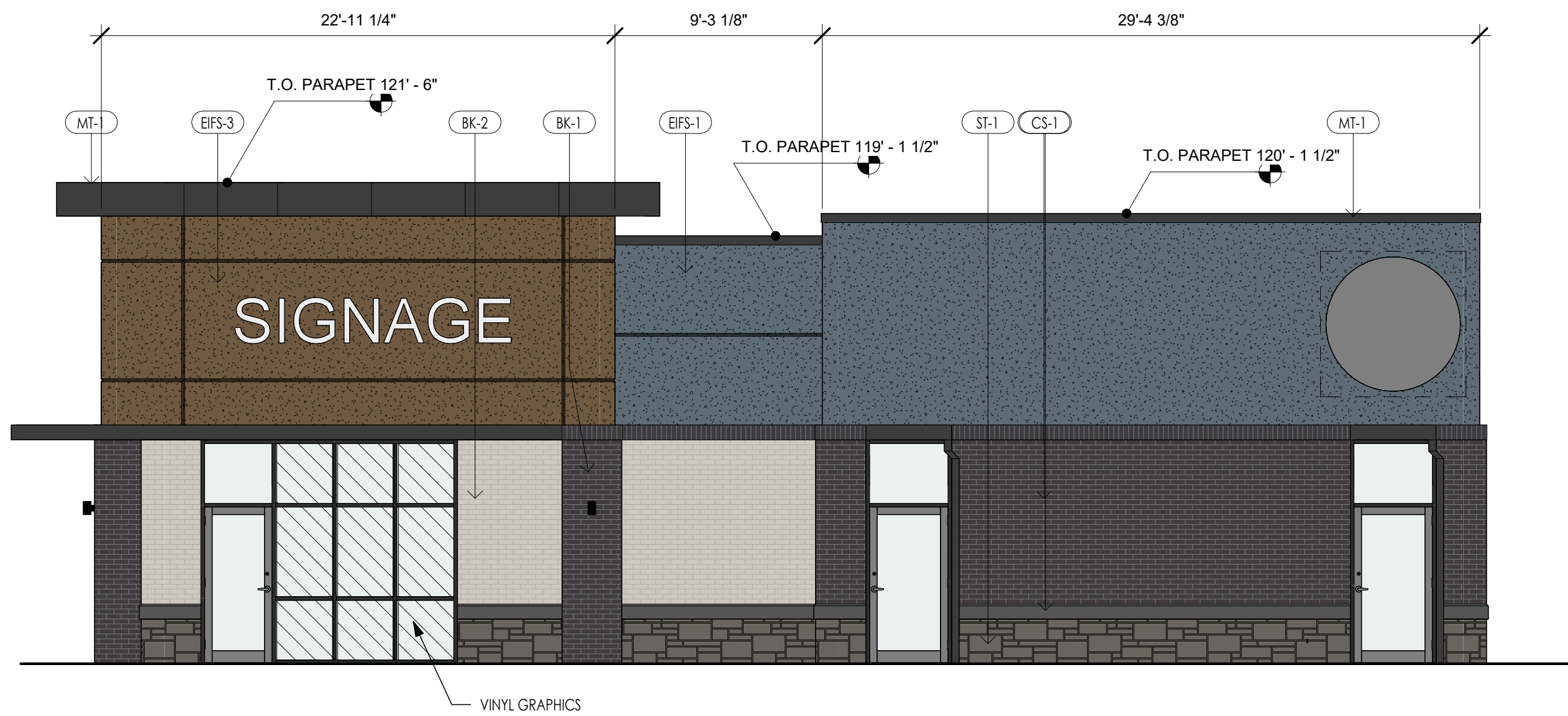
FRONT FACADE (SOUTH ELEVATION): CLASS 1 & 2 MATERIAL CALCULATIONS			
FACADE TOTAL:	1,342 SF	100%	
CLASS 1 MATERIAL TOTAL:	850 SF	63%	
BRICK VENEER:	453 SF	34%	
CLEAR GLASS:	381 SF	28%	
CAST STONE :	16 SF	1%	
CLASS 2 MATERIAL TOTAL:	127 SF	3%	
STONE VENEER, SYNTHETIC:	43 SF	3%	
CLASS 1 & 2 MATERIAL TOTAL:	977 SF	66%	



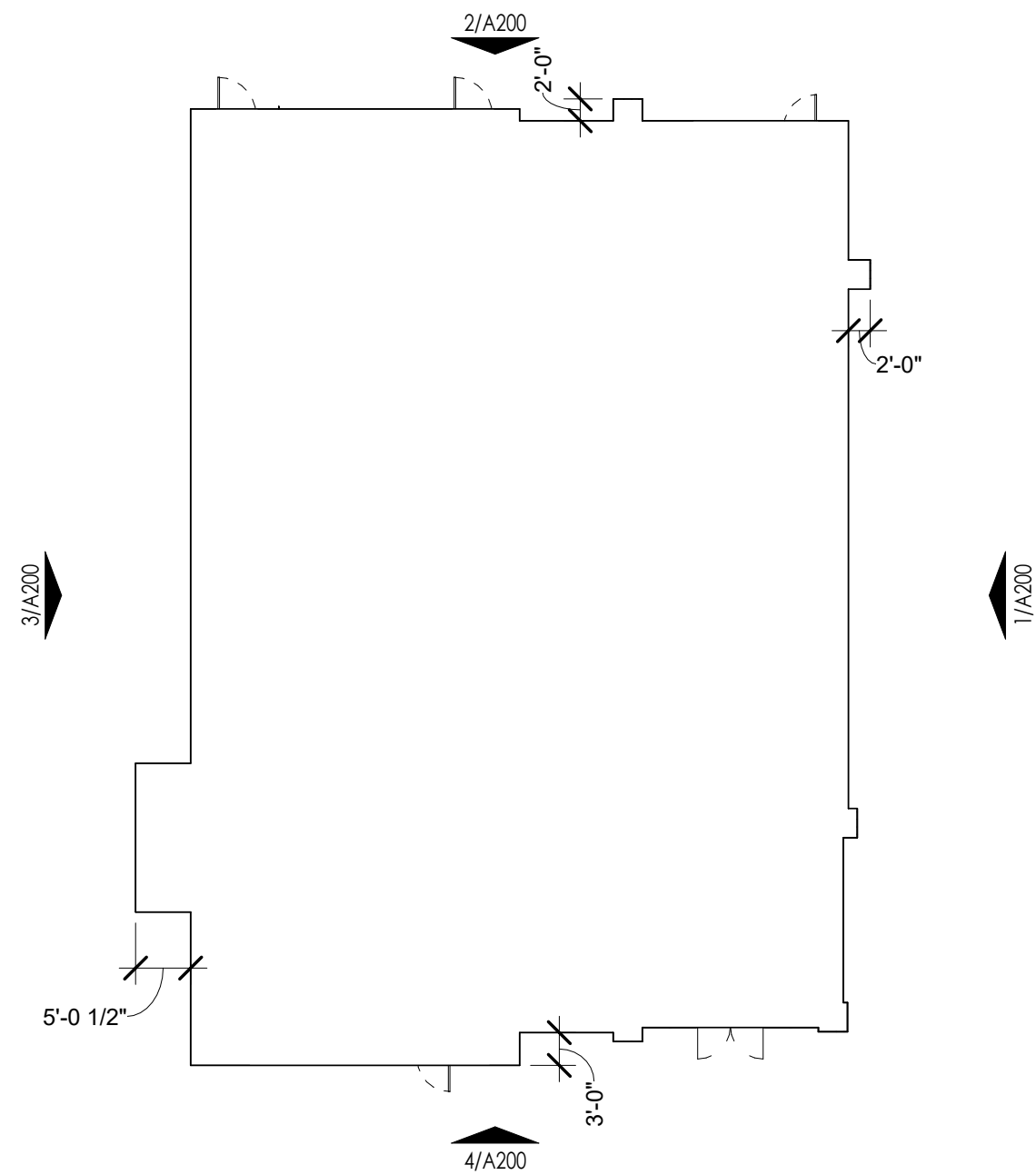
WEST ELEVATION ③
SCALE: 3/16" = 1'-0"



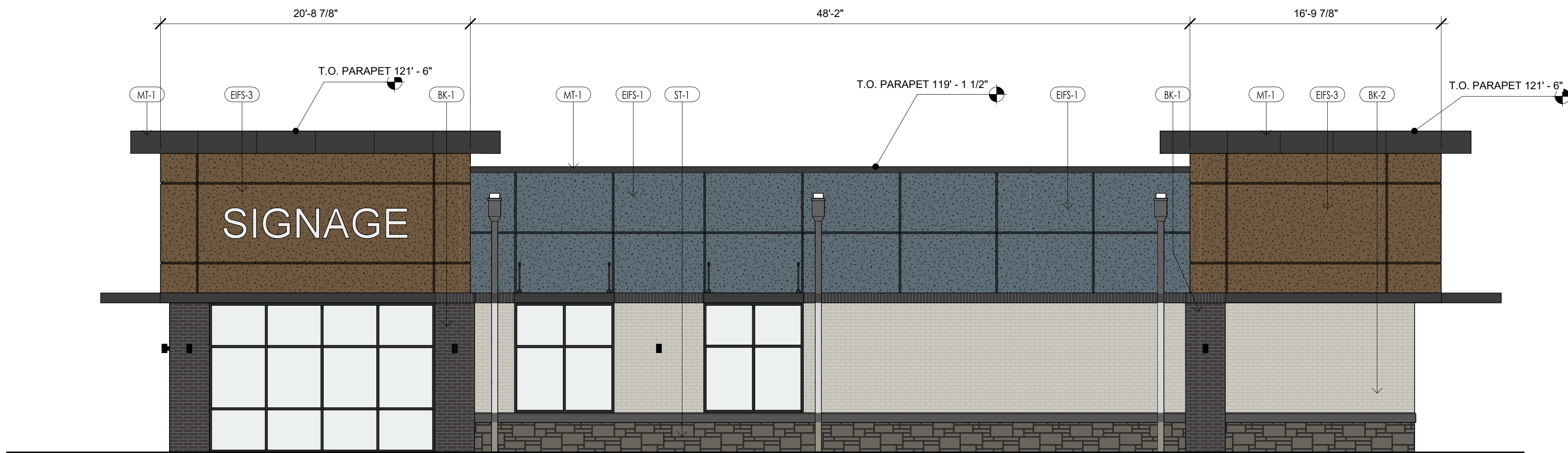
SOUTH ELEVATION ④
SCALE: 3/16" = 1'-0"



NORTH ELEVATION ②
SCALE: 3/16" = 1'-0"



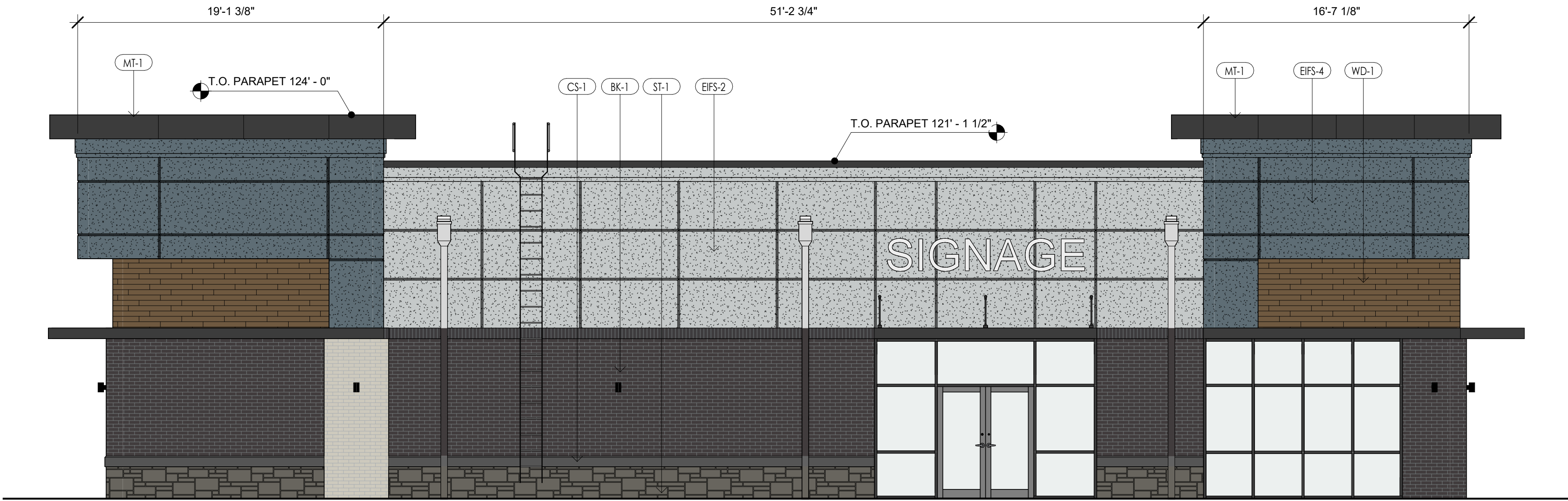
KEY PLAN ⑤
SCALE: 1/16" = 1'-0"



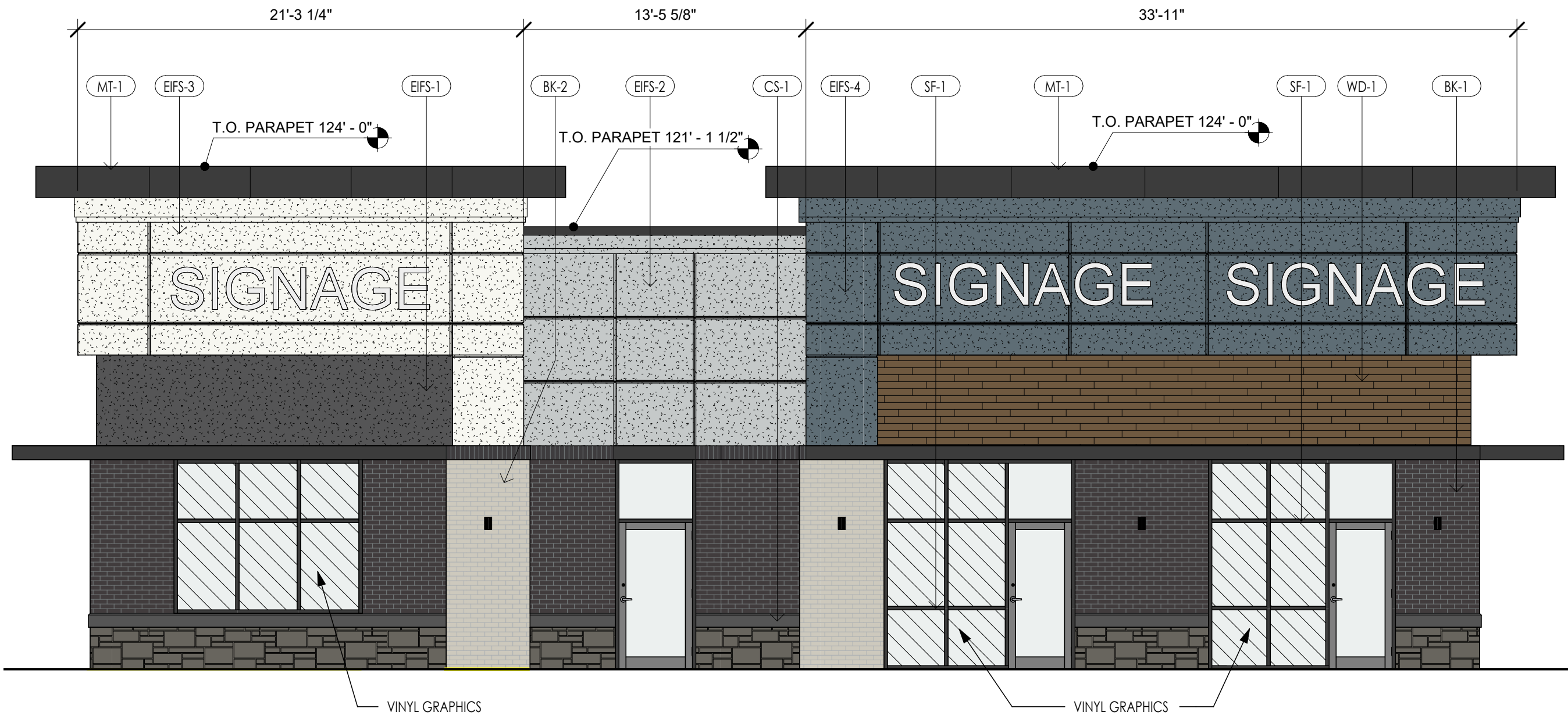
EAST ELEVATION ①
SCALE: 3/16" = 1'-0"

EXTERIOR FINISH LEGEND				
MARK	DESCRIPTION	MANUFACTURER	MODEL/COLOR	COMMENTS
BK-1	FULL BRICK	MUTUAL MATERIALS	COAL CREEK	SABLE MORTAR 770
BK-2	FULL BRICK	INTERSTATE BRICK	PEWTER	---
CMU-1	CONCRETE MASONRY UNIT	---	MATCH BLDG COLOR	---
EFS-1	EFS	DRYVIT	IRON ORE	---
EFS-2	EFS	DRYVIT	TWILIGHT GRAY	---
EFS-3	EFS	DRYVIT	HIGH REFLECTIVE WHITE	---
EFS-4	EFS	DRYVIT	GRANITE GRAY	---
ST-1	STONE	LAMINA STONE	SHIELBY	5/8" THICK X 7 1/4" WIDE
CS-1	CAST STONE TRIM UNIT	MIDWEST CAST STONE	6A	---
MT-1	METAL	---	FLAT BLACK	---
WD-1	COMPOSITE	NICHHA	VINTAGEWOOD - CEDAR	---

FRONT FACADE: CLASS 1 & 2 MATERIAL CALCULATIONS		
FACADE TOTAL:	1,580 SF	100%
CLASS 1 MATERIAL TOTAL:	561 SF	36%
BRICK VENEER:	179 SF	32%
CLEAR GLASS:	373 SF	66%
CAST STONE:	9 SF	2%
CLASS 2 MATERIAL TOTAL:	235 SF	16%
CEMENT FIBER BOARD:	207 SF	88%
STONE VENEER, SYNTHETIC:	28 SF	12%
CLASS 1 & 2 MATERIAL TOTAL:	796 SF	50%



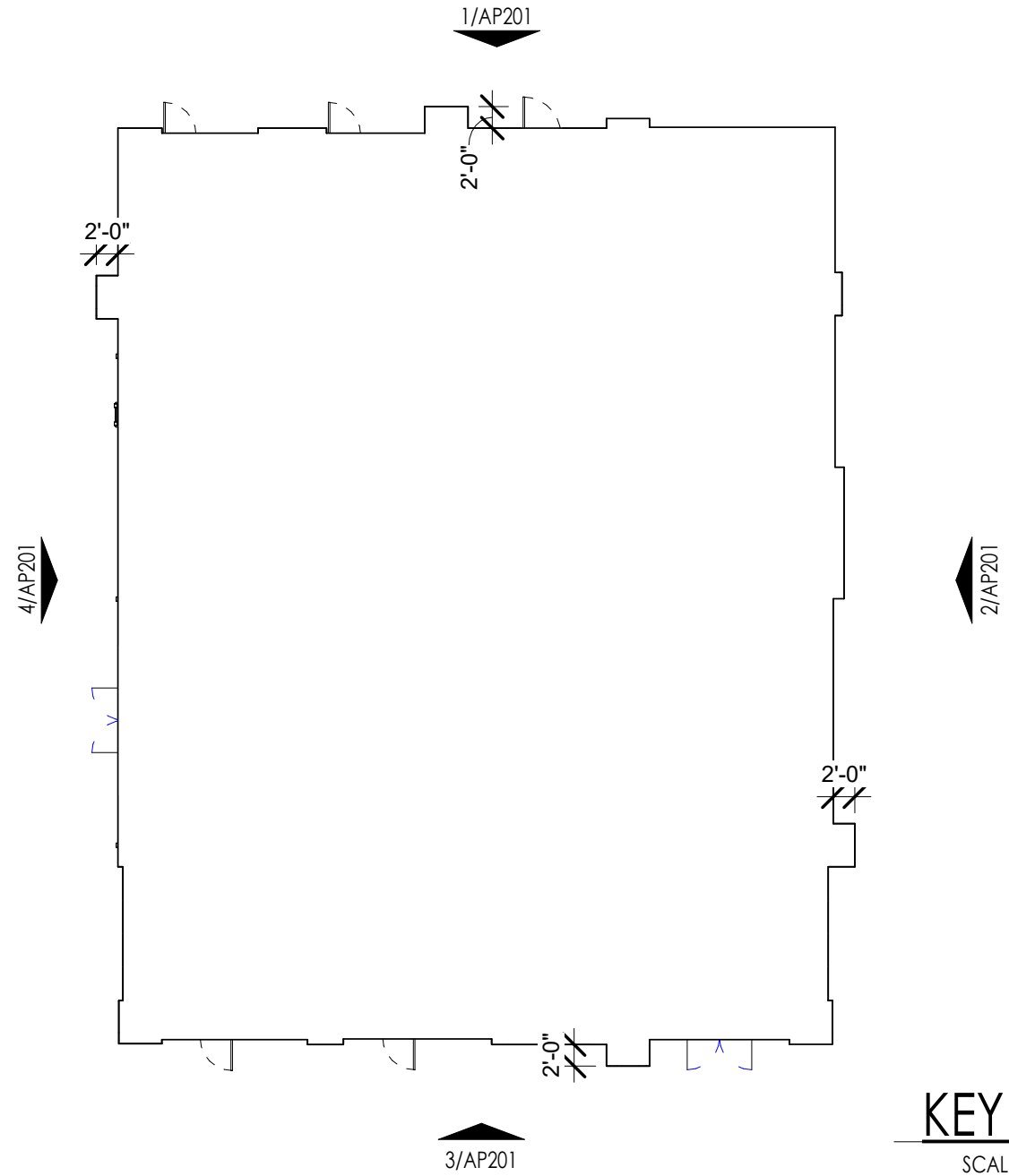
WEST ELEVATION ④
SCALE: 3/16" = 1'-0"



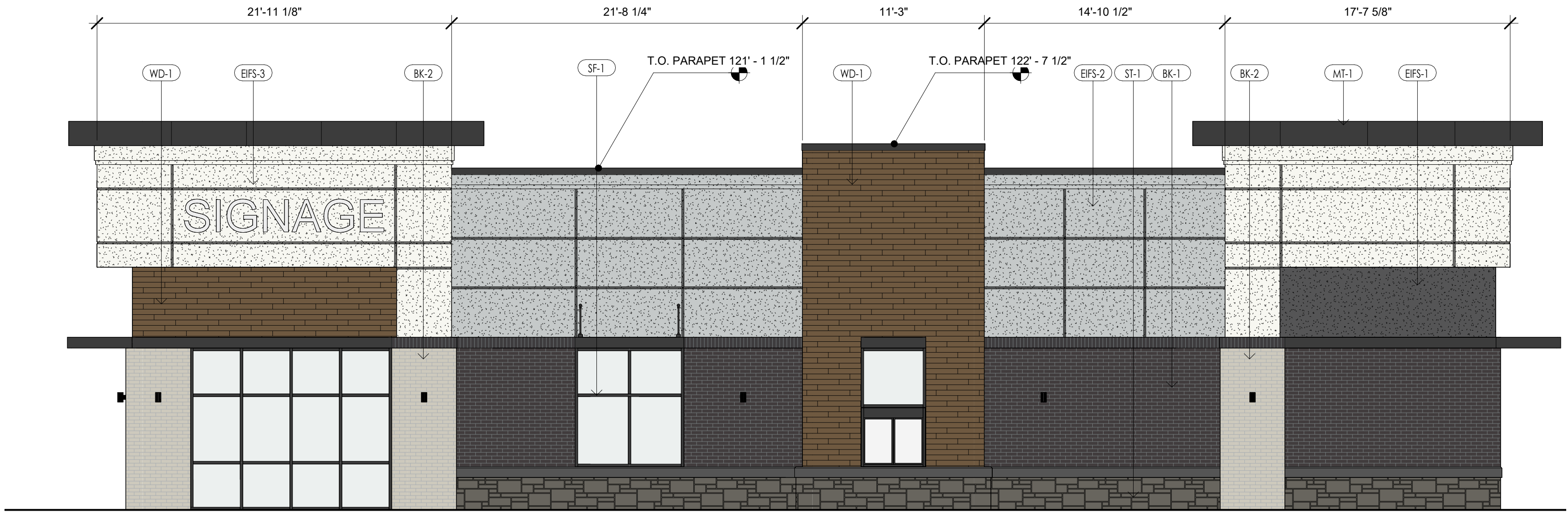
NORTH ELEVATION ①
SCALE: 3/16" = 1'-0"



SOUTH ELEVATION ③
SCALE: 3/16" = 1'-0"

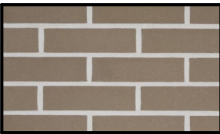


KEY PLAN ⑤
SCALE: 1/16" = 1'-0"

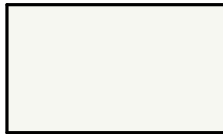


EAST ELEVATION ②
SCALE: 3/16" = 1'-0"

EXTERIOR FINISH SCHEDULE				
TAG	MATERIAL	MANUFACTURER	COLOR	COMMENTS
BK-1	FULL BRICK	BELDEN BRICK	LANDMARK GRAY SMOOTH	STANDARD GRAY GROUT
EIFS-1	EIFS	DRYVIT	HIGH REFLECTIVE WHITE	---
EIFS-2	EIFS	DRYVIT	COLOR TO MATCH BK-1	---
EIFS-3	EIFS	DRYVIT	COLOR TO MATCH MT-1	---
MT-1	METAL	TBD	BLACK	---
SF-1	STOREFRONT	KAWNEER OR EQ	BLACK	CLEAR GLAZING
SF-2	STOREFRONT	KAWNEER OR EQ	BLACK	SPANDREL GLAZING
ST-1	STONE	INDUSTRIAL LEDGE	OAKBROOK	STANDARD GRAY GROUT



BK-1



EIFS-1



EIFS-2

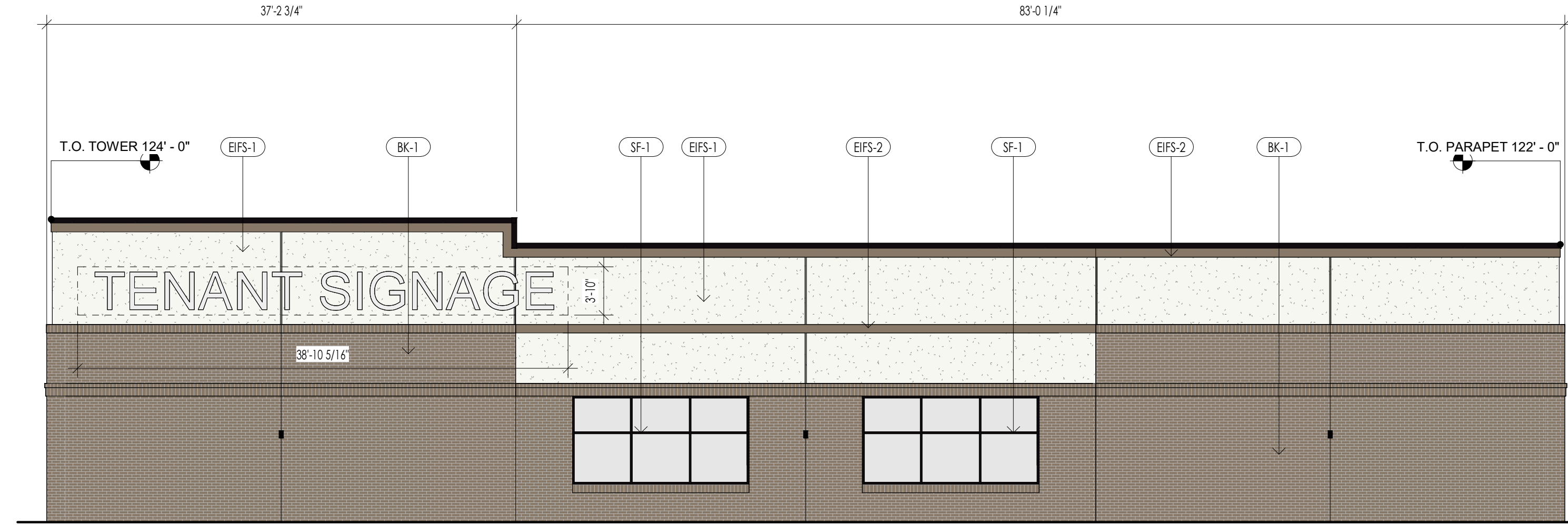


MT-1, SF-1, SF-2 & EIFS-3

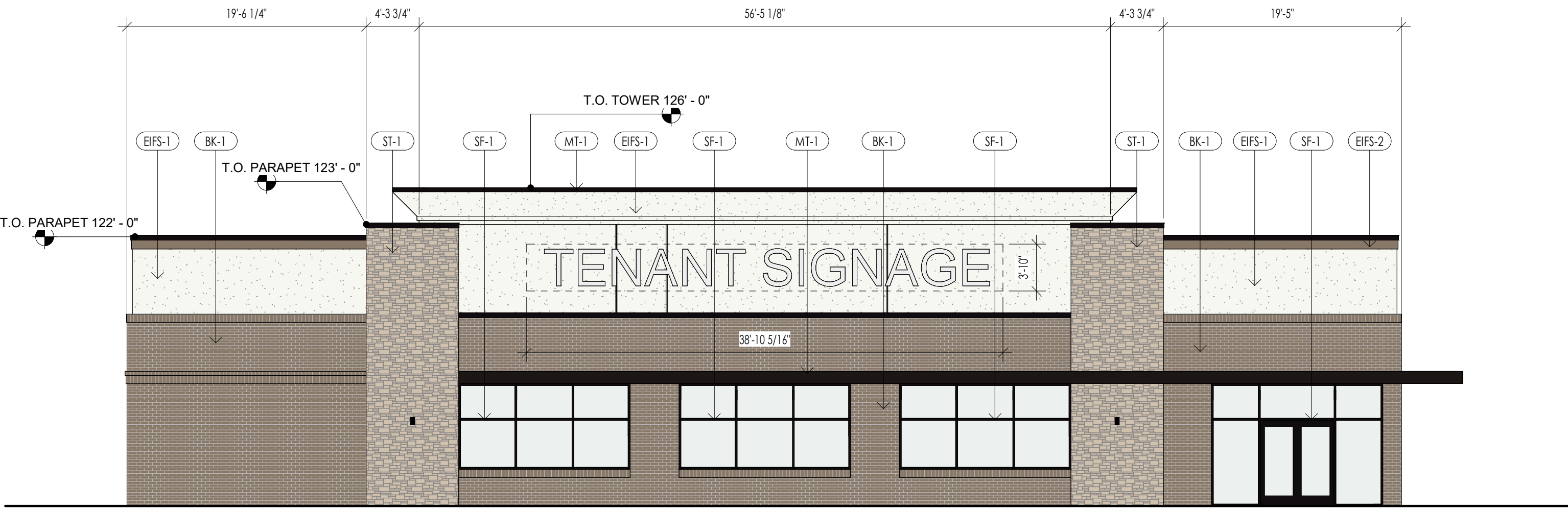


ST-1

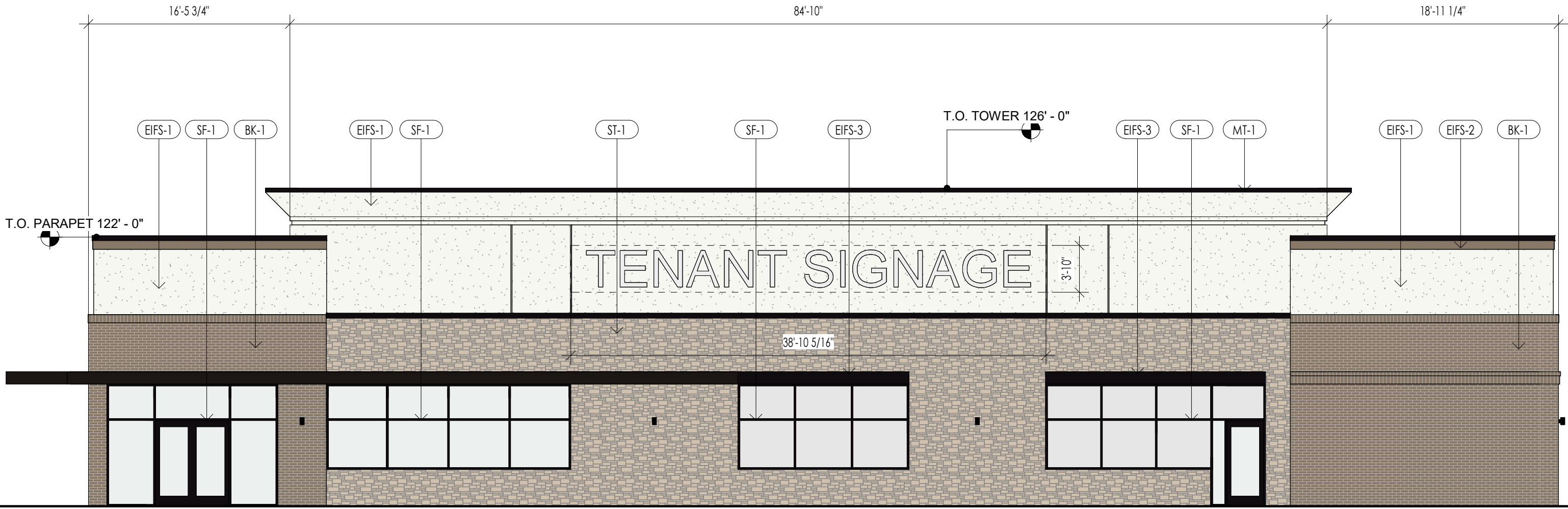
FRONT FACADE: CLASS 1 & 2 MATERIAL CALCULATIONS			
FACADE TOTAL:	2,529 SF	100%	
CLASS 1 MATERIAL TOTAL:	1,398 SF	55%	
BRICK VENEER:	964 SF	38%	
CLEAR GLASS:	434 SF	17%	
CLASS 2 MATERIAL TOTAL:	349 SF	14%	
STONE VENEER, SYNTHETIC:	349 SF	14%	
CLASS 1 & 2 MATERIAL TOTAL:	1,747 SF	69%	



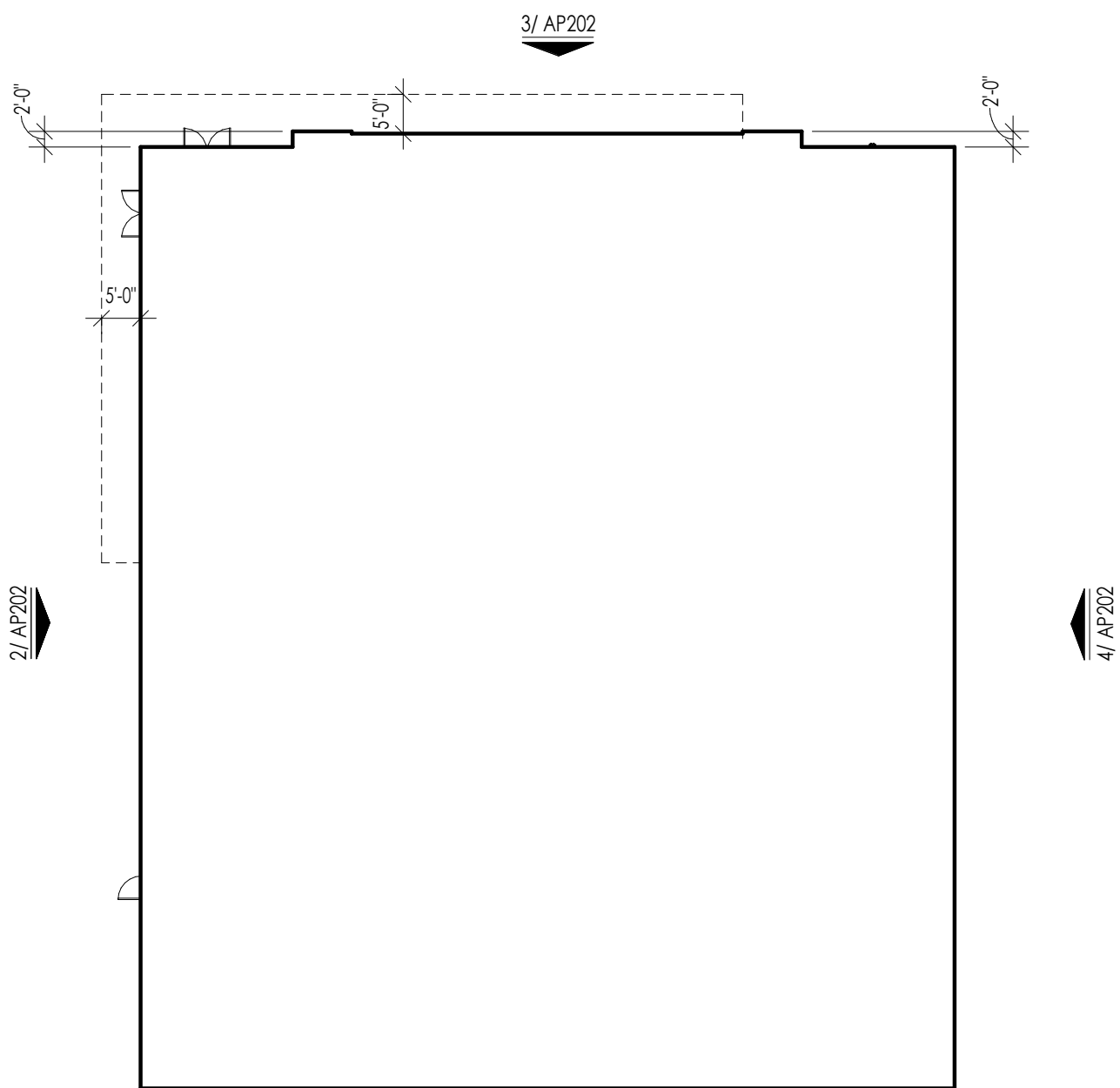
EAST ELEVATION 4
SCALE: 1/8" = 1'-0"



NORTH ELEVATION 3
SCALE: 1/8" = 1'-0"

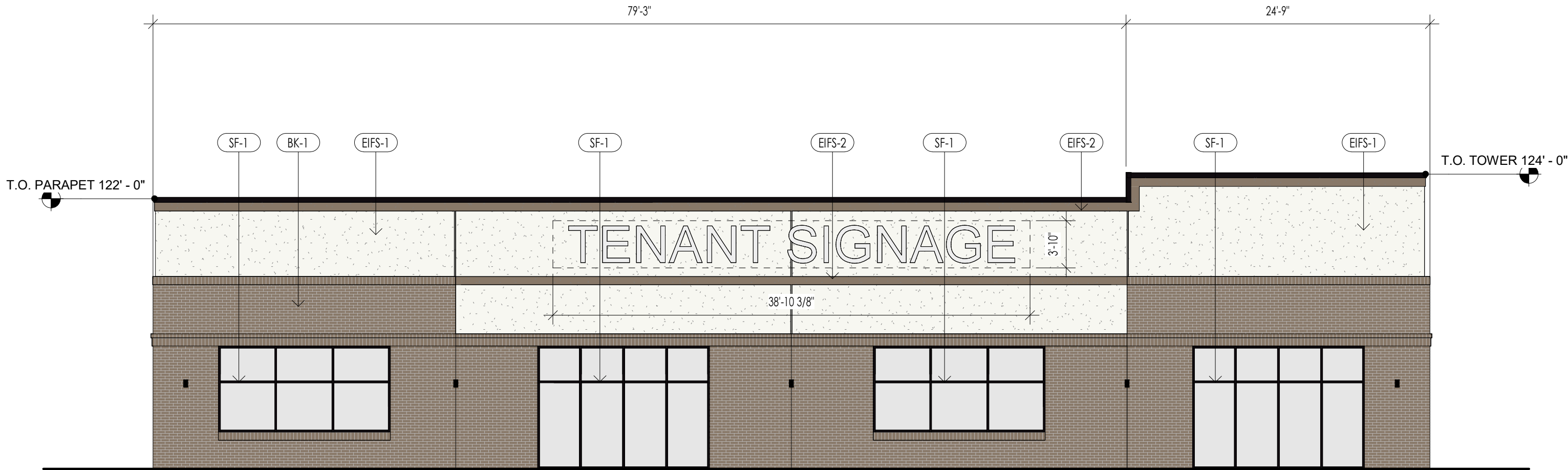


WEST ELEVATION 2
SCALE: 1/8" = 1'-0"



1/ AP202

KEY PLAN 5
SCALE: 3/64" = 1'-0"



SOUTH ELEVATION 1
SCALE: 1/8" = 1'-0"