



LEE'S SUMMIT
MISSOURI®

Charlie's Car Wash – 950 NW Chipman Rd

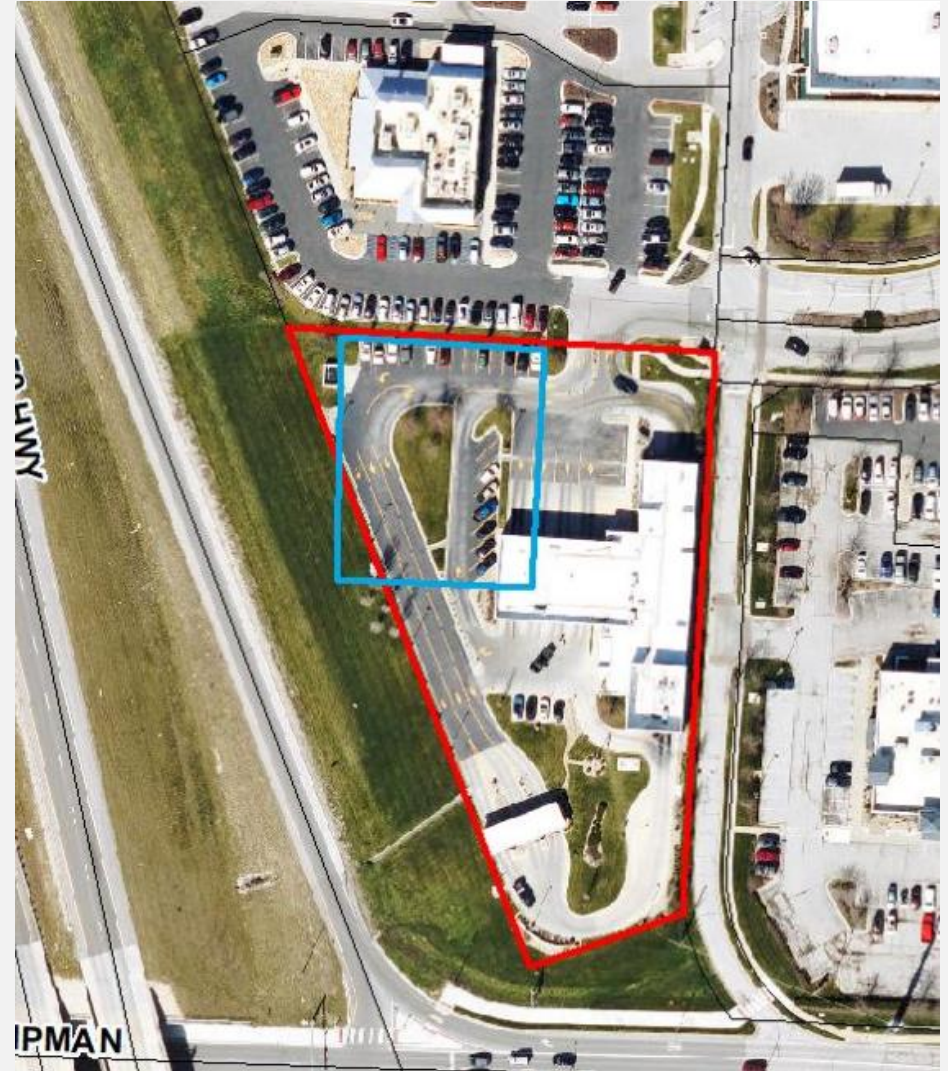
Special Use Permit

PL2025-081

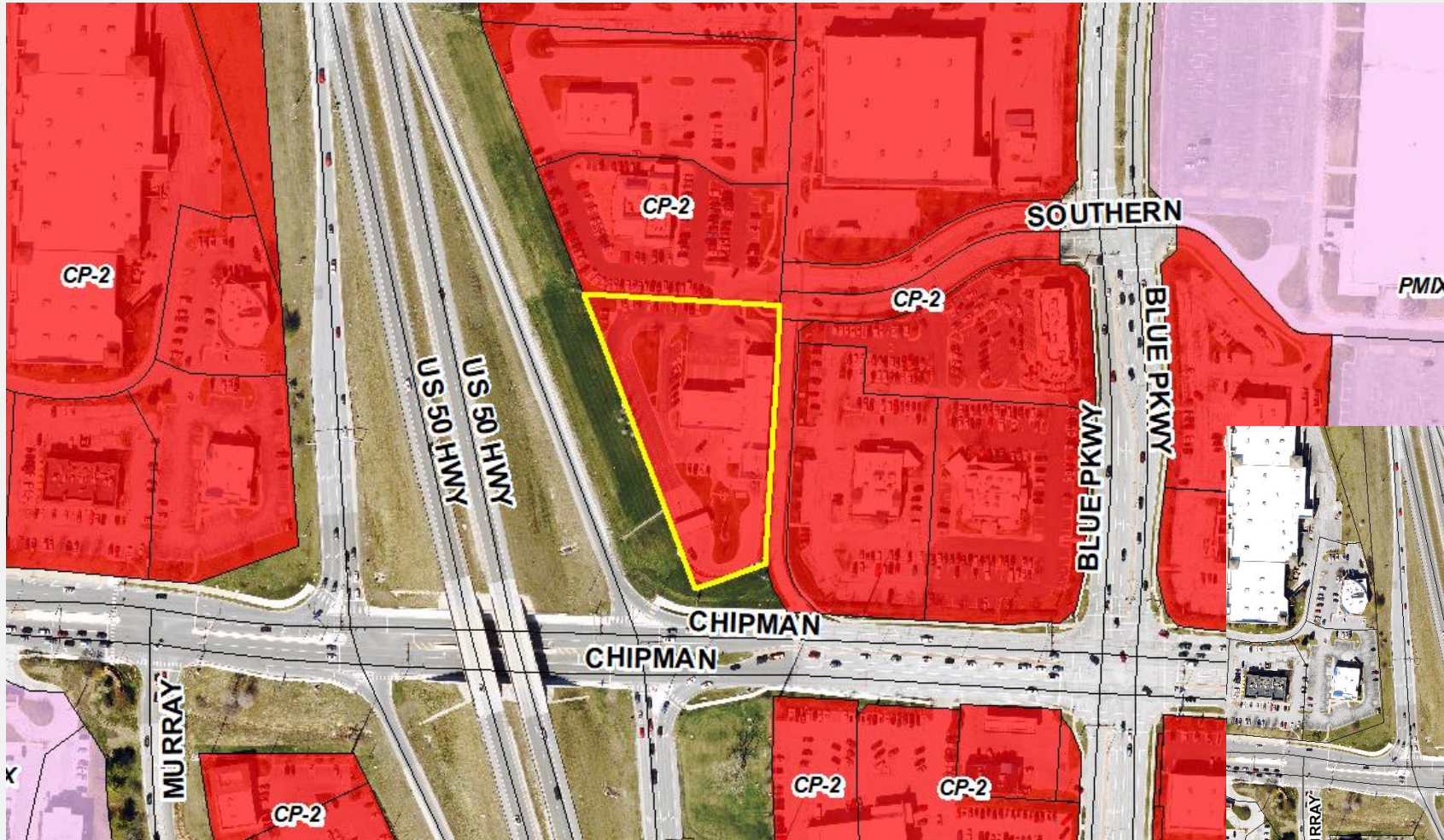


Project Request

The applicant requests a special use permit (SUP) for the addition of 16 outdoor, self-service, vacuum stations to the existing car wash facility. The applicant requests a 20-year time period for the SUP.



Zoning Information



Preliminary Development Plan

Existing Conditions

- 13,321 sq. ft. facility
- No outdoor vacuum stations
- Parking
 - 20 parking spaces - required
 - 33 on-site parking spaces - provided



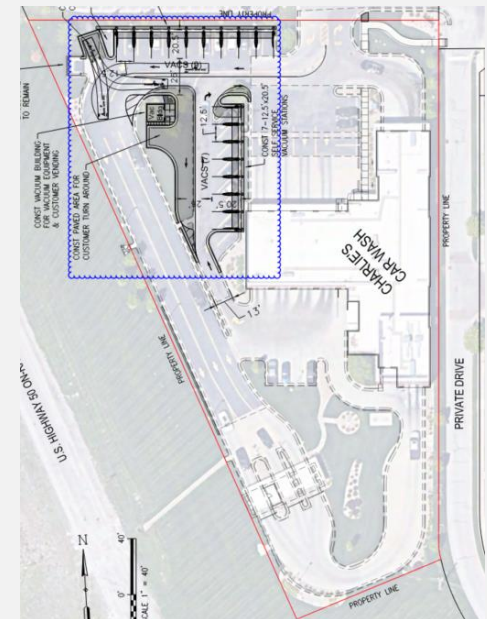
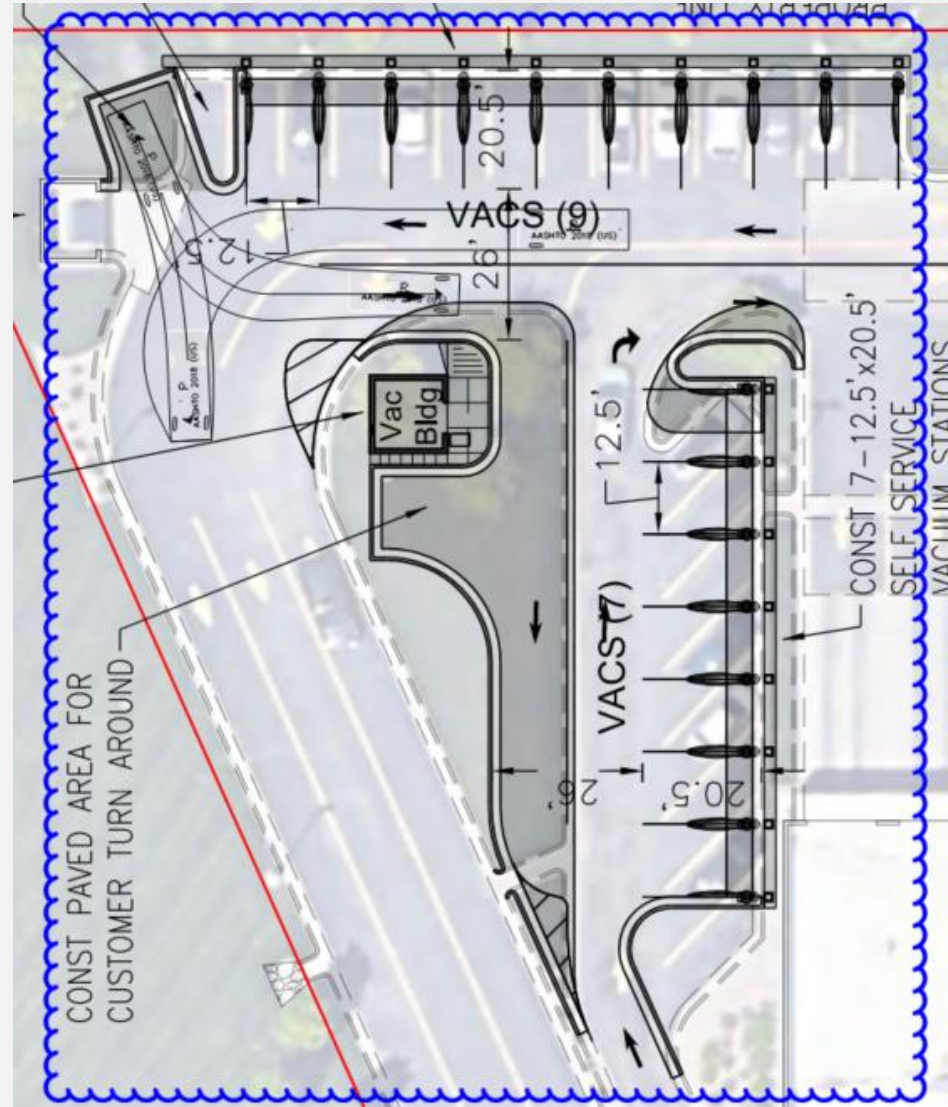
Preliminary Development Plan

Existing Conditions

- 13,321 sq. ft. facility
- No outdoor vacuum stations
- Parking
 - 20 parking spaces - required
 - 33 parking spaces - provided

Proposed

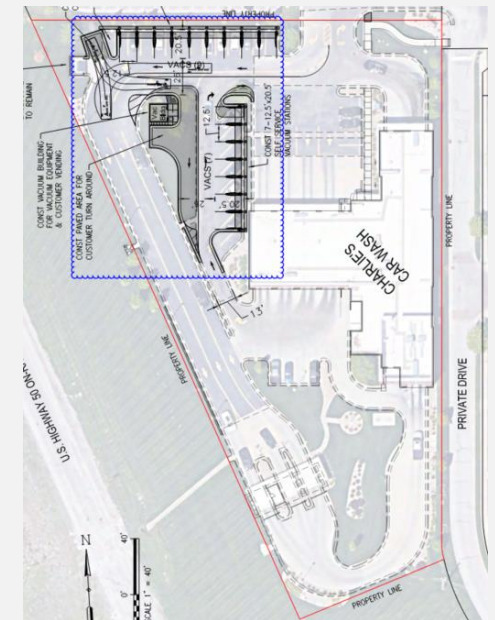
- 13,321 sq. ft. facility
- 16 outdoor vacuum stations
- Parking
 - 20 parking spaces - required
 - 40 parking spaces - provided
 - 11 on-site
 - 29 off-site



Preliminary Development Plan

Parking

- 16 outdoor vacuum stations
 - Parking
 - 20 parking spaces - required
 - 40 parking spaces - provided
 - 11 on-site
 - 29 off-site (Spira Care)
- ❖ ~450' walking distance



Approval Conditions

1. The special use permit shall be granted for a period of twenty (20) years from the date of approval.



LEE'S SUMMIT
MISSOURI®

Charlie's Car Wash – 950 NW Chipman Rd

Special Use Permit

PL2025-081

