

P:\BUSINESS PROJECTS\Commercial Projects\Red Door Grill (again)\87th_Lenexa\4 Drawings\RDG - Lees Summit PDP submittal.rvt

Exterior Finish Basis of Design Products:

- Aluminum Framed Storefront
 - Mfg: Tubelite
 - Style: T14000
 - Color: Black anodized
 - Size: 2" x 4 1/2" center set
 - Note: 1" IGU, low-E
- Aluminum Sunshade
 - Mfg: Tubelite
 - Style: Maxblock Sunshade Z-Blade
 - Color: Black anodized
 - Size: 30" projection, 5-1/4" blade
- Brick Type I
 - Mfg: Hebron Brick Company
 - Color: Sea Grey #6 (70%)
 - Size: Modular
 - Finish: Velour
- Brick Type II
 - Mfg: Hebron Brick Company
 - Color: Sea Grey #6
 - Size: Modular
 - Finish: Velour
- Brick Type III
 - Mfg: Sioux City Brick
 - Color: Ebonite Velour
 - Size: Modular
 - Finish: Velour
- Paving Brick Type I
 - Mfg: Yankee Hill
 - Color: Dove Grey
 - Pattern: Herringbone
- Prefinished Metal Batten Seam Panel
 - Mfg: Berridge
 - Style: Batten Seam Panel
 - Color: Matte Black
 - Size: 24 ga. x 16" wide
 - Note: Coping finish to match
- Prefinished Corrugated Metal Panel
 - Mfg: Berridge
 - Style: HR-16 Panel
 - Color: Zinc Grey
 - Size: 24 ga. x 16" wide, 4" rib w/ 2" reveal
- Wood Soffit
 - Species: Douglas Fir
 - Style: Tongue and groove
 - Size: 1x6
 - Finish: Stained
- Fenced Enclosure and Gate
 - Mfg: Ameristar
 - Style: WireWorks Plus
 - Panel: 4" tall, 2"x6" mesh, 3" v-fold, 6ga. wire
 - Post: 2" sq. x 16ga.
 - Finish: PermaCoat powder coated
 - Color: Black
- Steel Window System
 - Basis of design: Metro W-20, non-thermally broken
 - Steel: Blackened
- Potential Stucco Finish
 - Dryvit, MID base
 - 381 Monastery Brown; Sandpebble
 - 380 Chocolate Mousse; Sandpebble fine
 - Dryvit, PASTAL base
 - 113 Amarillo white; Sandpebble



E4 Elevation 2
3/16" = 1'-0"



A4 Elevation 1
3/16" = 1'-0"

architectural
 URBAN PRAIRIE ARCHITECTURAL
 COLLABORATIVE, P.C.
 4523 Mercier Street
 Kansas City, Missouri 64111
 p 816.304.7416
 pminto@urbanprairiekc.com

PROJECT NUMBER:	20-XXXX
ISSUE DATE:	2020-09-29
REVISIONS:	DATE

Exterior Finish Basis of Design Products:

Aluminum Framed Storefront
 Mfg: Tubelite
 Style: T14000
 Color: Black anodized
 Size: 2" x 4 1/2" center set
 Note: 1" IGU, low-E

Aluminum Sunshade
 Mfg: Tubelite
 Style: Mandack Sunshade Z-Blade
 Color: Black anodized
 Size: 30" projection, 5-1/4" blade

Brick Type I
 Mfg: Hebron Brick Company
 Color: Sea Grey #6 (70%)
 Silverado (30%)
 Size: Modular
 Finish: Velour

Brick Type II
 Mfg: Hebron Brick Company
 Color: Sea Grey #6
 Size: Modular
 Finish: Velour

Brick Type III
 Mfg: Sioux City Brick
 Color: Ebony Velour
 Size: Modular
 Finish: Velour

Paving Brick Type I
 Mfg: Yankee Hill
 Color: Dove Grey
 Pattern: Herringbone

Prefinished Metal Batten Seam Panel
 Mfg: Beridge
 Style: Batten Seam Panel
 Color: Matte Black
 Size: 24 ga. x 16" wide
 Note: Coping finish to match

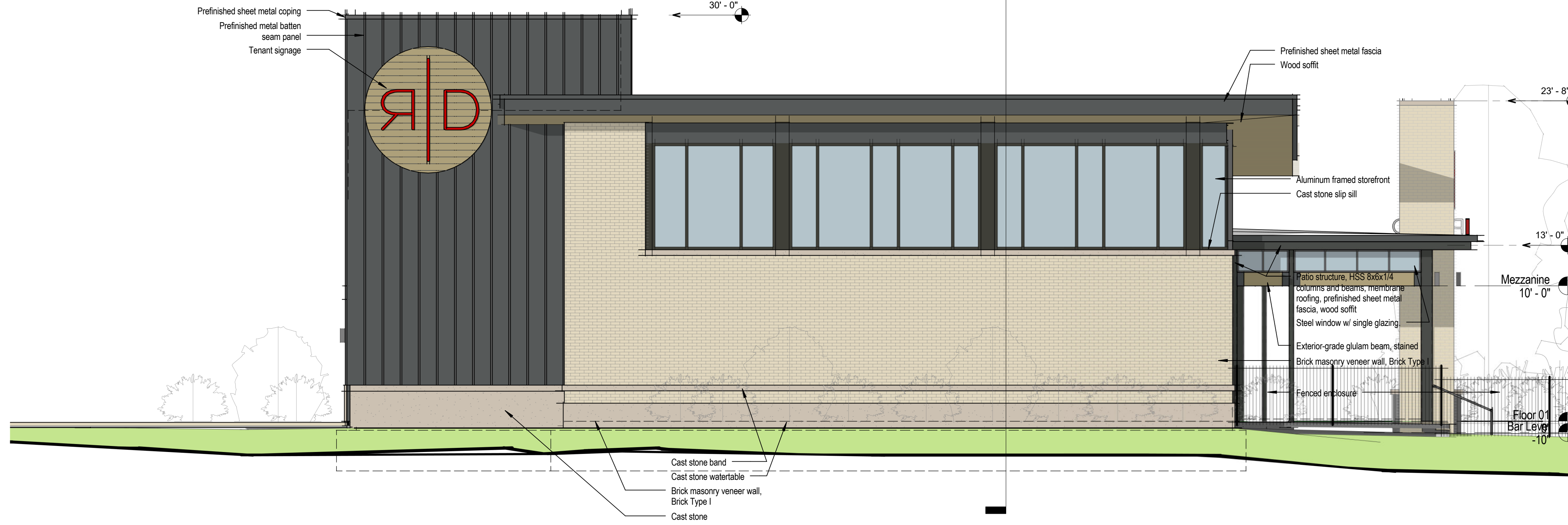
Prefinished Corrugated Metal Panel
 Mfg: Beridge
 Style: HR-16 Panel
 Color: Zinc Grey
 Size: 24 ga. x 16" wide, 4" rib w/ 2" reveal

Wood Soffit
 Species: Douglas Fir
 Style: Tongue and groove
 Size: 1x6
 Finish: Stained

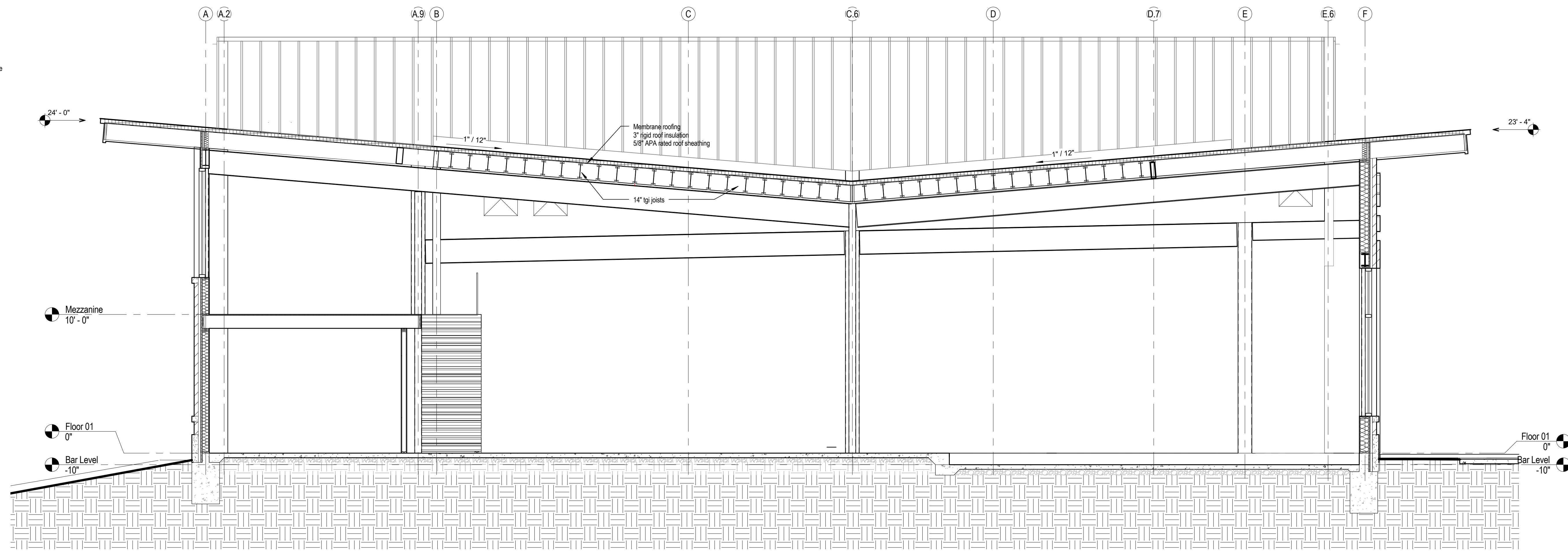
Fenced Enclosure and Gate
 Mfg: Ameristar
 Style: WireWorks Plus
 Panel: 4' tall, 2"x6" mesh, 3" v-fold, 6ga. wire
 Post: 2" sq. x 16ga.
 Finish: PermaCoat powder coated
 Color: Black

Steel Window System
 Basis of design:
 Metro W-20, non-thermally broken
 Steel, Blackened

Potential Stucco Finish
 Dryvit, MID base
 -381 Monastery Brown; Sandpebble
 -380 Chocolate Mousse; Sandpebble fine
 Dryvit, PASTAL base
 -113 Amarillo white; Sandpebble



E4 Elevation 3
 3/16" = 1'-0"



A1 Building Section
 1/4" = 1'-0"

PROJECT NUMBER:	20-000
ISSUE DATE:	2020-09-29
REVISIONS:	DATE

P:\BUSINESS PROJECTS\Commercial Projects\Red Door Grill again\87th Lenexa\4 Drawings\RDG - Lees Summit PDP submittal.rvt









Vertical Batten

Berridge Batten Seam Panel, matte black
product photo and similar applications



L.L.Bean

L.L.Bean

L.L.Bean
Outside



Blended Brick Type 1

70% Sea Grey

30% Silverado

(see 3 case study photos)



WELCOME

GATHER TALK GROW SERVE
LOVE

ALL ARE WELCOME!



LEATHER TALK GROW SERVE
LOVE
Ligonier
April 15-16, 2015
10:00 AM - 12:00 PM
12:00 PM - 2:00 PM
2:00 PM - 4:00 PM
4:00 PM - 6:00 PM
6:00 PM - 8:00 PM
8:00 PM - 10:00 PM
10:00 PM - 12:00 AM

HJ'S YOUTH
COMMUNITY
AN OUTREACH OF ST. ANTHONY



Decorative and Protective Exterior Wall Finishes

- DURABLE SURFACE COLOR AND TEXTURE
- USED OVER DRYVIT SYSTEMS, EXTERIOR MASONRY, STUCCO, PRECAST, CAST-IN-PLACE CONCRETE, OR INTERIOR WALL SURFACES
- STANDARD AND CUSTOM COLORS

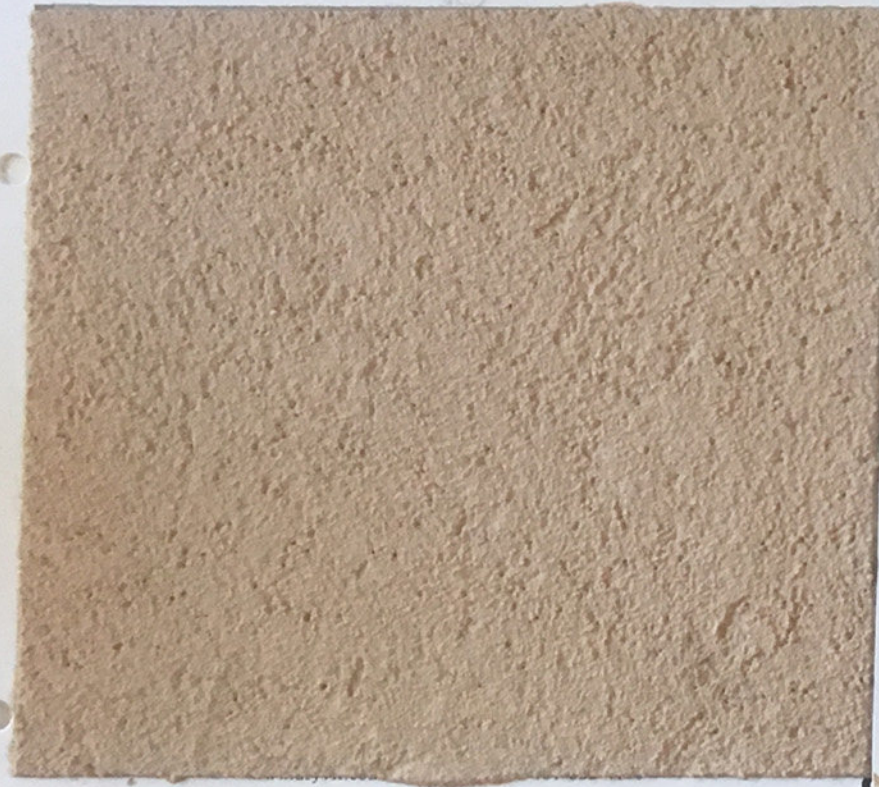
Disclaimer

The intent and purpose of this sample is to provide a representation of Dryvit Systems, Inc. finish textures and colors. It is offered only to guide in final color selection. This color sample shall not be used for final color approval as color differences may occur. Actual color approval should be made from 2'x4' samples of each finish type, texture and color to be used on the project. Samples shall be prepared using the same tools and techniques proposed for the actual installation by the applicator/contractor.

ARCHITECTURAL BUILDING SYSTEMS
 CUSTOMER: URBAN PRAIRIE
 JOB: HIGHLAND PLAZA
 EXTURE: SANDPEBBLE *Fin*
 REF:
 BASE: MID
 COLOR: 380 CHOCOLATE MOUSSE

SLIM SAMPLE

10:47 AM
 DATE MIXED 06/20/18



Decorative and Protective Exterior Wall Finishes

- DURABLE SURFACE COLOR AND TEXTURE
- USED OVER DRYVIT SYSTEMS, EXTERIOR MASONRY, STUCCO, PRECAST, CAST-IN-PLACE CONCRETE, OR INTERIOR WALL SURFACES
- STANDARD AND CUSTOM COLORS AVAILABLE

Disclaimer

The intent and purpose of this sample is to provide a representation of Dryvit Systems, Inc. finish textures and colors. It is offered only to guide in final color selection. This color sample shall not be used for final color approval as color differences may occur. Actual color approval should be made from 2'x4' samples of each finish type, texture and color to be used on the project. Samples shall be prepared using the same tools and techniques proposed for the actual installation by the applicator/contractor.

ARCHITECTURAL BUILDING SYSTEMS
 CUSTOMER: URBAN PRAIRIE
 JOB: HIGHLAND PLAZA
 EXTURE: SANDPEBBLE
 REF:
 BASE: MID
 COLOR: 381 MONASTARY BROWN

SLIM SAMPLE

10:47 AM
 DATE MIXED 06/20/18



Decorative and Protective Exterior Wall Finishes

- DURABLE SURFACE COLOR AND TEXTURE
- USED OVER DRYVIT SYSTEMS, EXTERIOR MASONRY, STUCCO, PRECAST, CAST-IN-PLACE CONCRETE, OR INTERIOR WALL SURFACES
- STANDARD AND CUSTOM COLORS AVAILABLE

Disclaimer

The intent and purpose of this sample is to provide a representation of Dryvit Systems, Inc. finish textures and colors. It is offered only to guide in final color selection. This color sample shall not be used for final color approval as color differences may occur. Actual color approval should be made from 2'x4' samples of each finish type, texture and color to be used on the project. Samples shall be prepared using the same tools and techniques proposed for the actual installation by the applicator/contractor.

ARCHITECTURAL BUILDING SYSTEMS
 CUSTOMER: URBAN PRAIRIE
 JOB: HIGHLAND PLAZA
 EXTURE: SANDPEBBLE
 REF:
 BASE: PASTEL
 COLOR: 113 AMARILLO WHITE

SLIM SAMPLE

10:46 AM
 DATE MIXED 06/20/18



RED DOOR WOODFIRED GRILL

THE LITTLE UPSCALE NEIGHBORHOOD JOINT

8793



Red Door Grill Leawood



Retractable wind
screen panels

Removable seasonal wind
screen panels

Windbreak and Sunscreen Panels
case studies and product cut sheets

Roof retracted (not in Lenexa project)

Removable seasonal wind screen panels beyond
Wind screen and sun shade
panels retracted into housing



Red Door Grill Brookside

Removable seasonal wind screen panels

Wind screen and sun shade panels retracted into housing

