

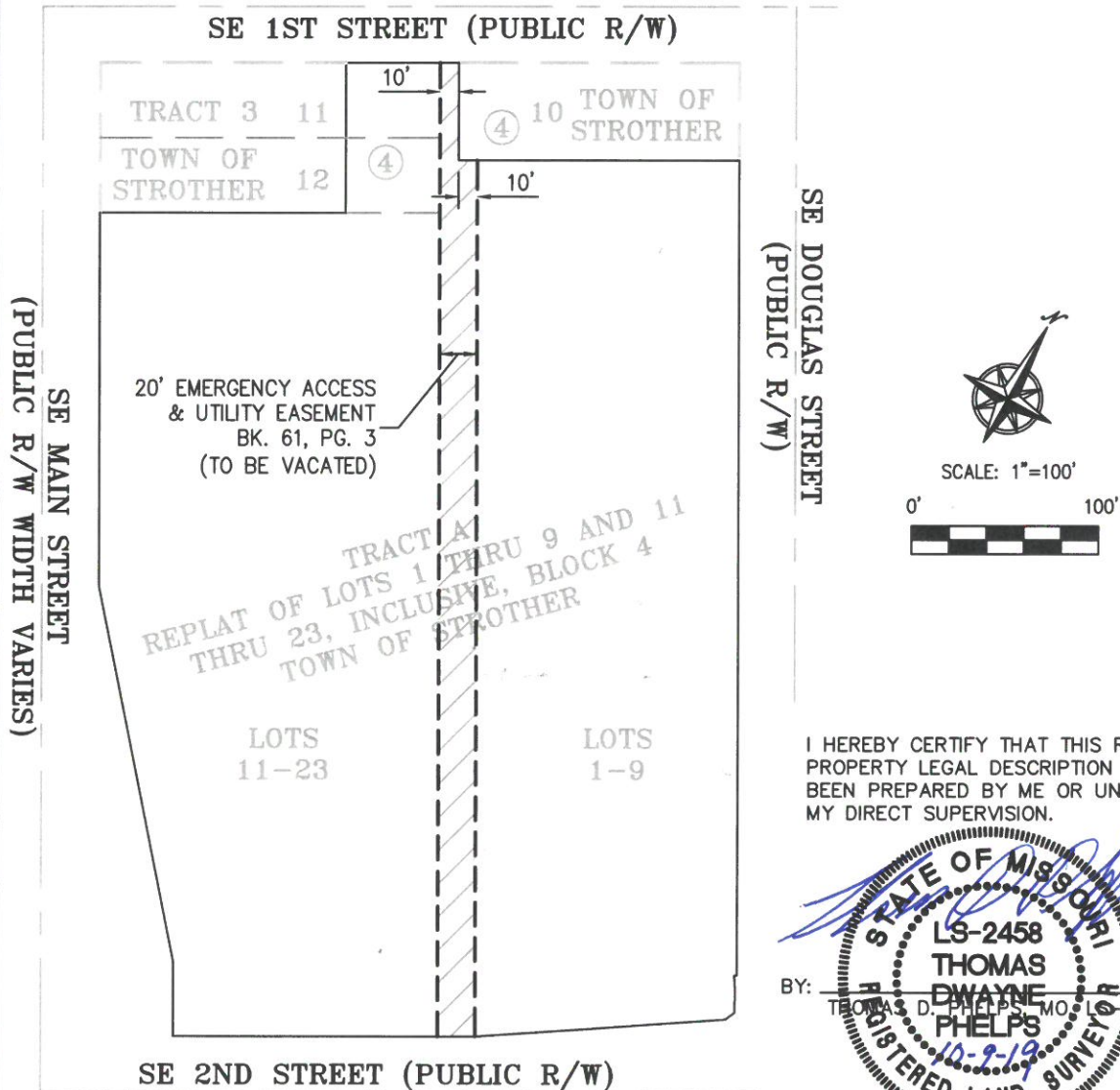
EXHIBIT "A"

EMERGENCY ACCESS & UTILITY EASEMENT VACATION

PART OF TRACT A, REPLAT OF LOTS 1 THRU 9 AND 11 THRU 23, INCLUSIVE, BLOCK 4 TOWN OF STROTHER, A SUBDIVISION IN THE CITY OF LEE'S SUMMIT, JACKSON COUNTY, MISSOURI.

DESCRIPTION:

ALL OF THE 20 FOOT WIDE EMERGENCY ACCESS EASEMENT AND UTILITY EASEMENT AS SHOWN ON TRACT A, REPLAT OF LOTS 1 THRU 9 AND 11 THRU 23, INCLUSIVE, BLOCK 4 TOWN OF STROTHER, A SUBDIVISION IN THE CITY OF LEE'S SUMMIT, JACKSON COUNTY, MISSOURI AS RECORDED IN BOOK I-61 AT PAGE 3 AT THE OFFICE OF RECORDER OF DEEDS IN JACKSON COUNTY, MISSOURI.



	<p>PHELPS ENGINEERING, INC (913) 393-1155 1270 N. Winchester Fax (913) 393-1166 Olathe, Kansas 66061 www.phelpsenengineering.com</p>	<p>CERTIFICATE OF AUTHORIZATION KANSAS LAND SURVEYING - LS-82 ENGINEERING - E-391 CERTIFICATE OF AUTHORIZATION MISSOURI LAND SURVEYING-2007001128 ENGINEERING-2007005058</p> <p>CERTIFICATE OF AUTHORIZATION MISSOURI PROJECT NO. 171125 DATE: 10-9-19 BY: SNH</p>
--	---	--