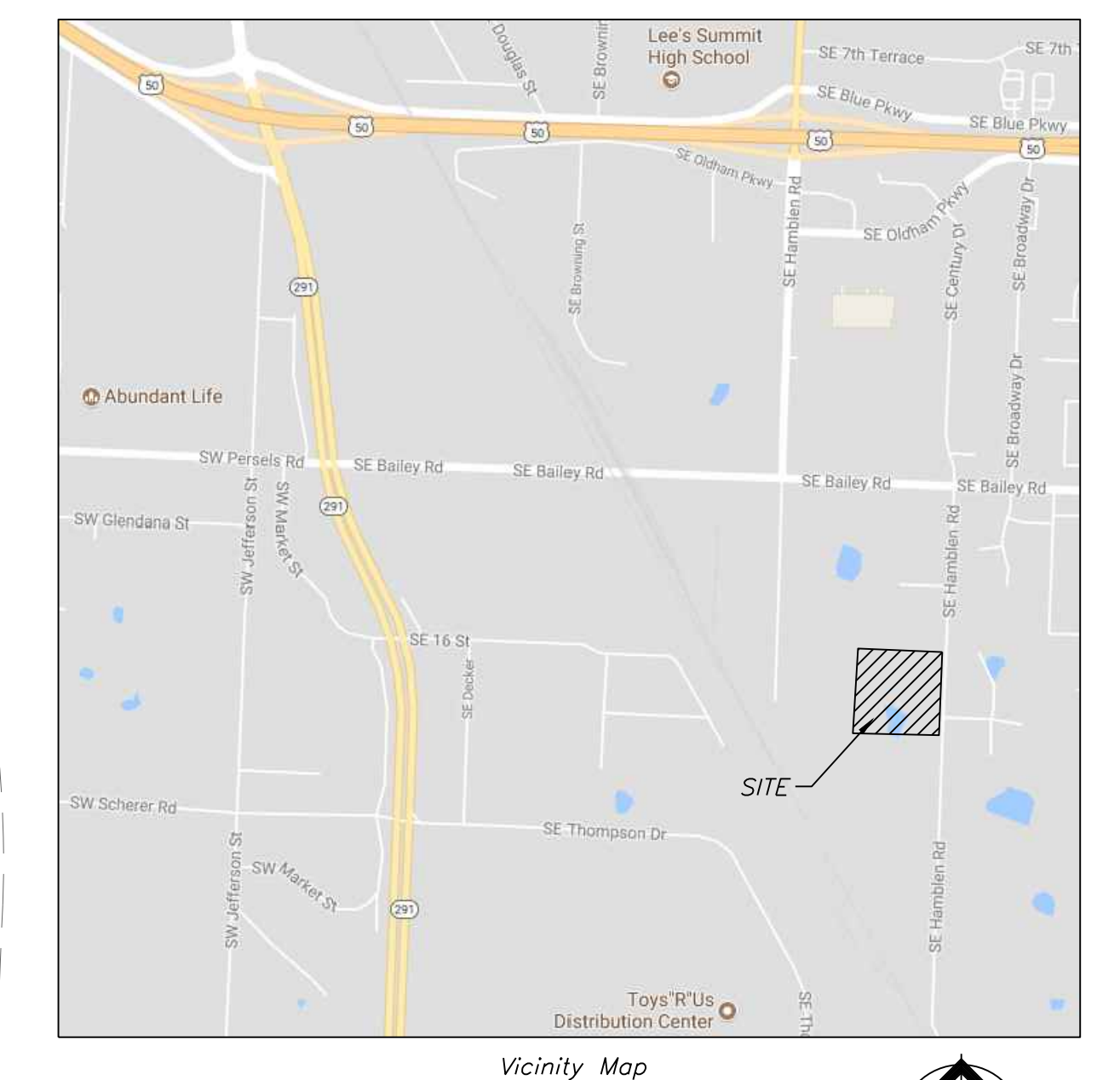


Property Description

Lot 2, Williams' Crossing, a subdivision as recorded in the Office of the Recorder, Jackson County, Missouri



TAILOR MADE EXTERIORS LLC
WILLIAMS' CROSSING LOT 2

Current Zoning: AG
Existing Land Use: Agriculture Homesite

Proposed Zoning: P1
Proposed Land Use: Office Warehouse

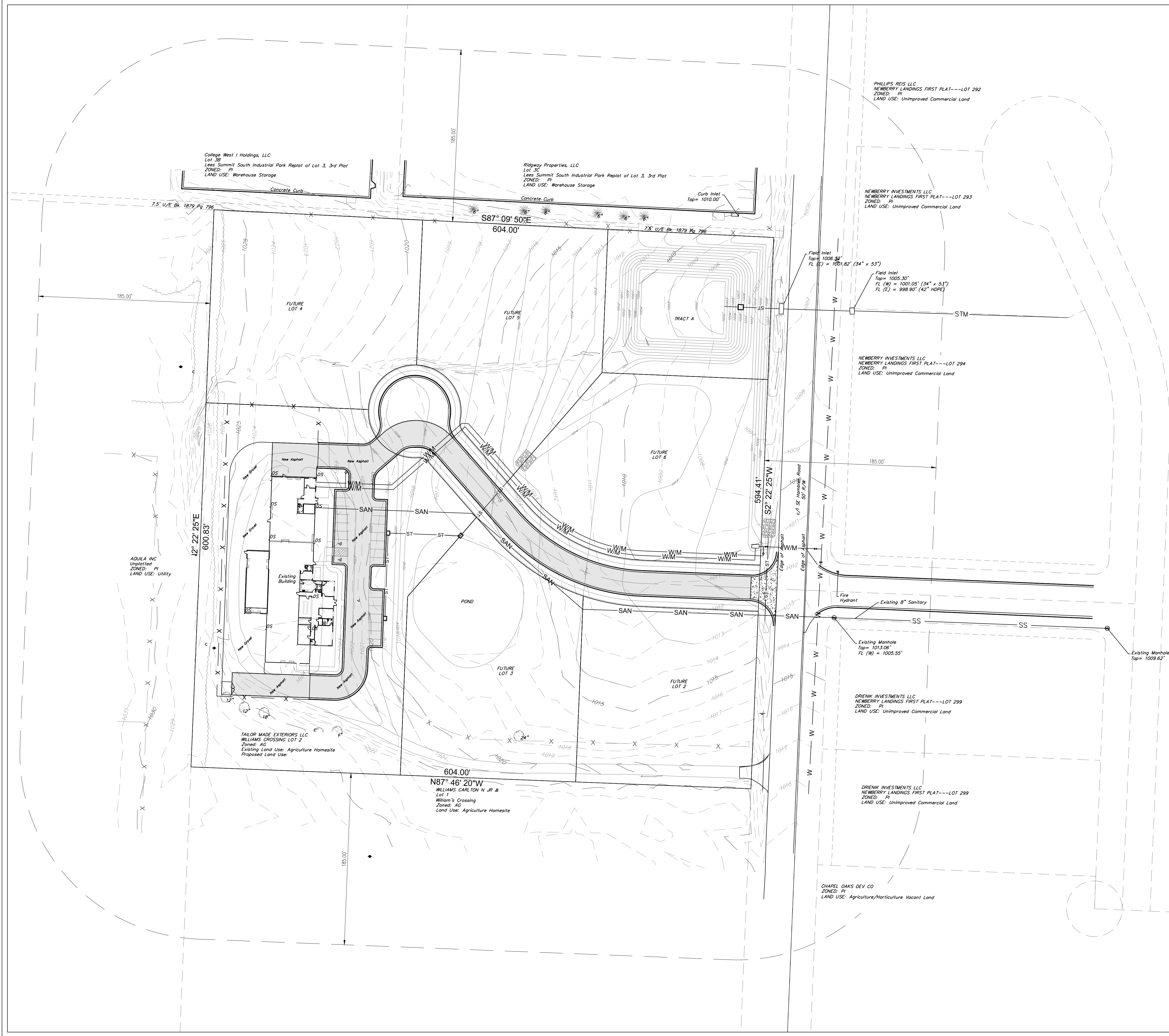
Professional Registration
Missouri
Engineering 2005002186-D
Surveying 2005008319-D
Kansas
Engineering E-1695
Surveying LS-218
Oklahoma
Engineering S254
Nebraska
Engineering CA2821

Project:
1600 Hamblen
Issue Date:
July 21, 2017

Resoning Exhibit for:
Lot 2, Williams' Crossing
Lees Summit, Jackson County, Missouri

Matthew J. Schlicht
MO PE 2006019708
KS PE 19071
OK PE 25226
NE PE E-143325

REVISIONS



College West Holdings, LLC
Lot 3B
Leas Summit South Industrial Park Replat of Lot 3, 3rd Plat
ZONED: P1
LAND USE: Warehouse Storage

Ridgway Properties, LLC
Lot 3C
Leas Summit South Industrial Park Replat of Lot 3, 3rd Plat
ZONED: P1
LAND USE: Warehouse Storage

PHILLIPS REIS LLC
NEWBERRY LANDINGS FIRST PLAT---LOT 292
ZONED: P1
LAND USE: Unimproved Commercial Land

NEWBERRY INVESTMENTS LLC
NEWBERRY LANDINGS FIRST PLAT---LOT 293
ZONED: P1
LAND USE: Unimproved Commercial Land

NEWBERRY INVESTMENTS LLC
NEWBERRY LANDINGS FIRST PLAT---LOT 294
ZONED: P1
LAND USE: Unimproved Commercial Land

DRENK INVESTMENTS LLC
NEWBERRY LANDINGS FIRST PLAT---LOT 299
ZONED: P1
LAND USE: Unimproved Commercial Land

DRENK INVESTMENTS LLC
NEWBERRY LANDINGS FIRST PLAT---LOT 299
ZONED: P1
LAND USE: Unimproved Commercial Land

CHAPEL OAKS DEV CO
ZONED: P1
LAND USE: Agriculture/Horticulture Vacant Land

AQUILA INC
Unplatted
ZONED: P1
LAND USE: Utility

TAILOR MADE EXTERIORS LLC
WILLIAMS' CROSSING LOT 2
Zoned: AG
Existing Land Use: Agriculture Homesite
Proposed Land Use:

604.00'
N87° 46' 20"W
WILLIAMS CARLTON N JR &
Lot 1
Williams' Crossing
Zoned: AG
Land Use: Agriculture Homesite