

Exhibit "A"

File No.: 022-00393

Project Name: GLMV Lee's Summit Market Place

V\_EXH14\_Ingress/Egress Easement Vacation

June 13, 2024

Ingress/Egress Easement Vacation Description:

A release of an existing Ingress/Egress Easement, as established in Minor Plat of Lee's Summit City Hall, Instrument No. 200510100791, Book 90, Page 35, all lying in the Southwest Quarter of Section 5, Township 47 North, Range 31 West, in the City of Lee's Summit, Missouri, Jackson County Missouri, being more particularly described by Patrick E. Ward, MO PLS-2005000071, of Olsson, Inc., Missouri LC-366, on June 13, 2024, as follows:

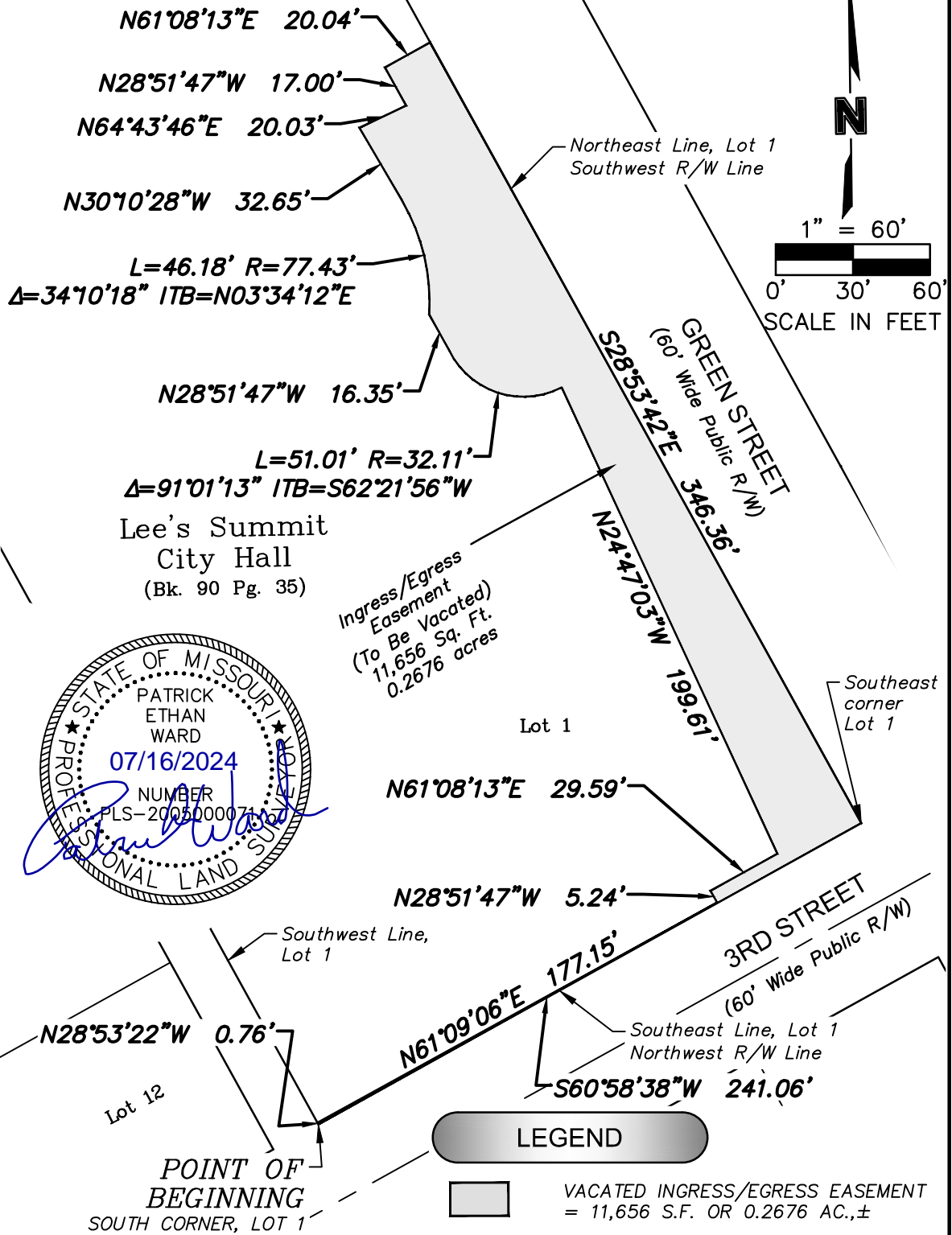
BEGINNING at the South corner of Lot 1 of said Minor Plat; thence North 28 degrees 53 minutes 22 seconds West, on the Southwest line of said Lot 1 a distance of 0.76 feet to a point; thence North 61 degrees 09 minutes 06 seconds East, departing said Southwest line a distance of 177.15 feet to a point; thence North 28 degrees 51 minutes 47 seconds West a distance of 5.24 feet to a point; thence North 61 degrees 08 minutes 13 seconds East a distance of 29.59 feet to a point; thence North 24 degrees 47 minutes 03 seconds West a distance of 199.61 feet to a point on a non-tangent curve; thence in a Southwesterly and Northwesterly direction, on a curve to the right, whose initial tangent bears South 62 degrees 21 minutes 56 seconds West, having a radius of 32.11 feet, through a central angle of 91 degrees 01 minutes 13 seconds, an arc distance of 51.01 feet to a point; thence North 28 degrees 51 minutes 47 seconds West a distance of 16.35 feet to a point on a non-tangent curve; thence in a Northerly and Northwesterly direction, on a curve to the left, whose initial tangent bears North 03 degrees 34 minutes 12 seconds East, having a radius of 77.43 feet, through a central angle of 34 degrees 10 minutes 18 seconds, an arc distance of 46.18 feet to a point; thence North 30 degrees 10 minutes 28 seconds West a distance of 32.65 feet to a point; thence North 64 degrees 43 minutes 46 seconds East a distance of 20.03 feet to a point; thence North 28 degrees 51 minutes 47 seconds West a distance of 17.00 feet to a point; thence North 61 degrees 08 minutes 13 seconds East a distance of 20.04 feet to a point on the Northeast line of said Lot 1; thence South 28 degrees 53 minutes 42 seconds East on said Northeast line distance of 346.36 feet to the Southeast corner of said Lot 1; thence South 60 degrees 58 minutes 38 seconds West, on the Southeast line of said Lot 1 a distance of 241.06 feet to the POINT OF BEGINNING, containing 11,656 Square Feet or 0.2676 acres, more or less.

(As depicted on Exhibit "B", attached and incorporated herein).



Olsson Inc.  
7301 W 133<sup>rd</sup> Street, Suite 200  
Overland Park, KS 66213  
(913) 381-1170

DWG: F:\2022\00001-00500\022-00393\40-Design\Survey\SRV\Sheets\EXH14\_02200393.dwg  
DATE: Jul 16, 2024 3:14pm  
XREFS: V\_XBASE\_62252 V\_XTOPO\_02200393 V\_EXH7\_203218  
USER: evalentine



PROJECT NO: 022-00393  
DRAWN BY: EDV  
DATE: 06.13.2024

INGRESS/EGRESS  
EASEMENT  
VACATION

**olsson**

7301 West 133rd Street  
Suite 200  
Overland Park, KS 66213-4750  
TEL 913.381.1170  
MOLC - 366

EXHIBIT  
"B"