

Yours Truly

Airport Master Plan Update Phase 2

April 14, 2025

Deliverables

FAA Required Documents

- Airport Layout Plan, ALP
- Exhibit A Property Map

Additional Planning Documents

- ATC Preliminary Site Study
- Runway 36 Precision Approach Feasibility
- Obstacle Action Plan
- Wildlife Hazard Assessment Plan

Airport Layout Plan

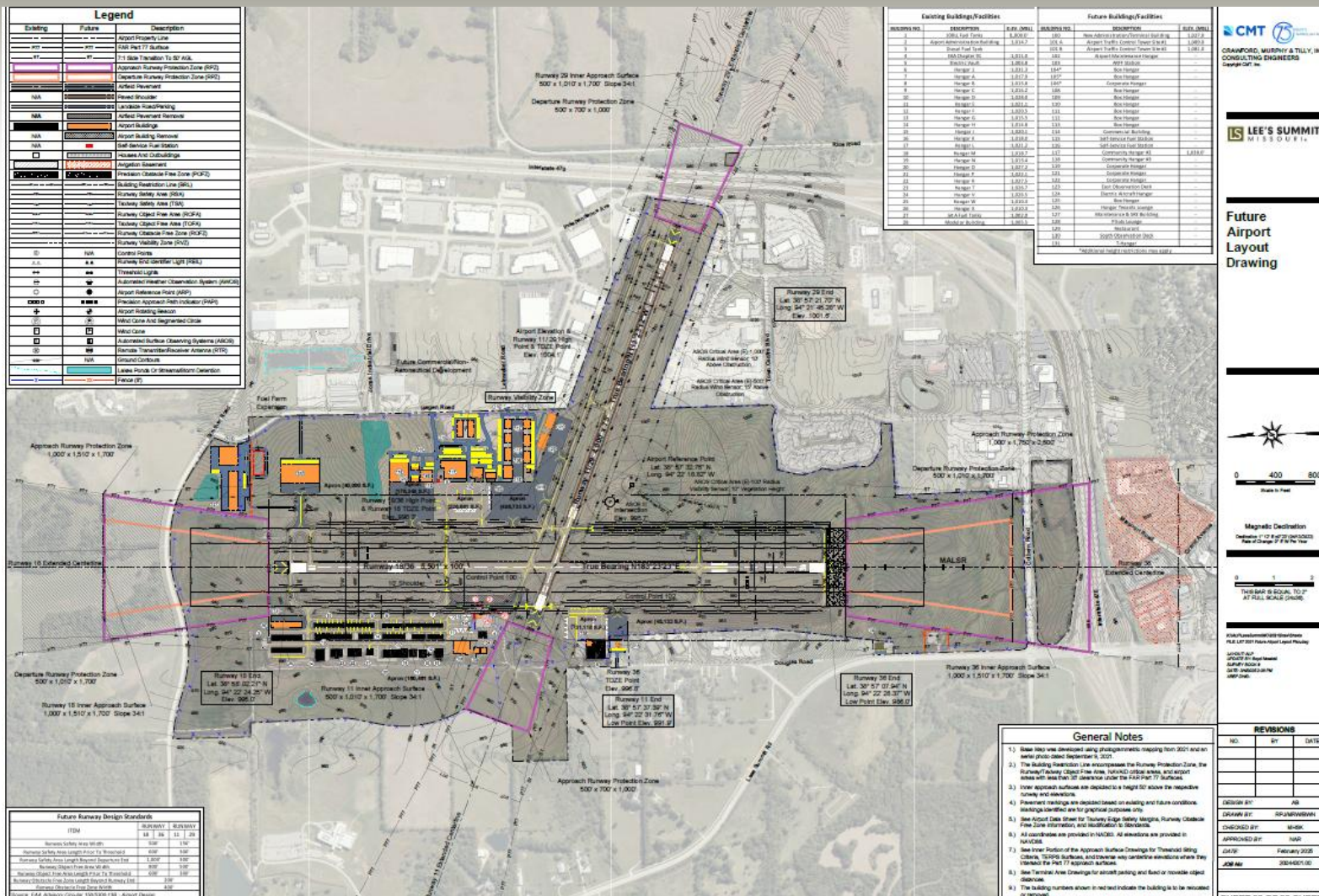
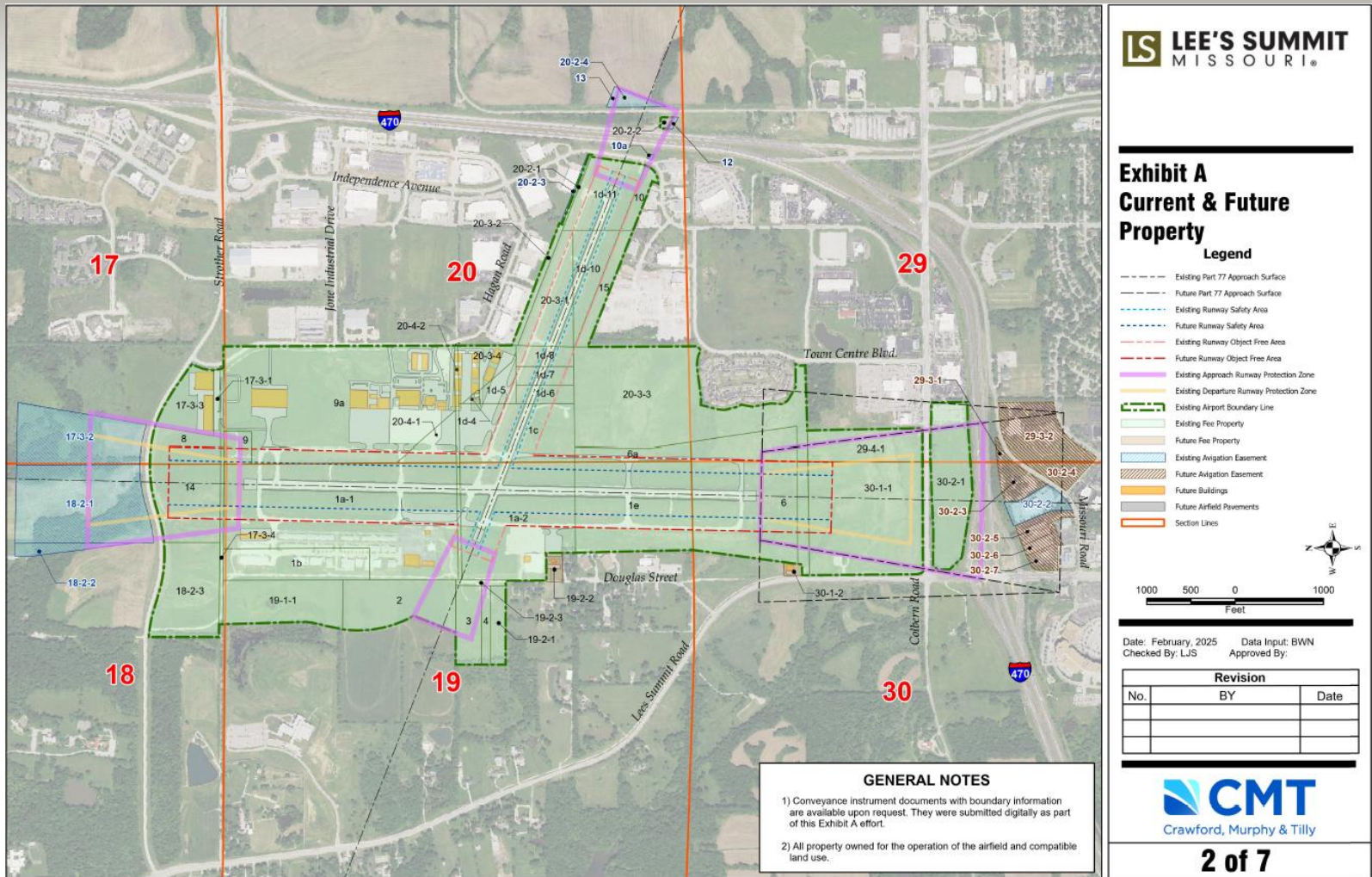


Exhibit A Property Map

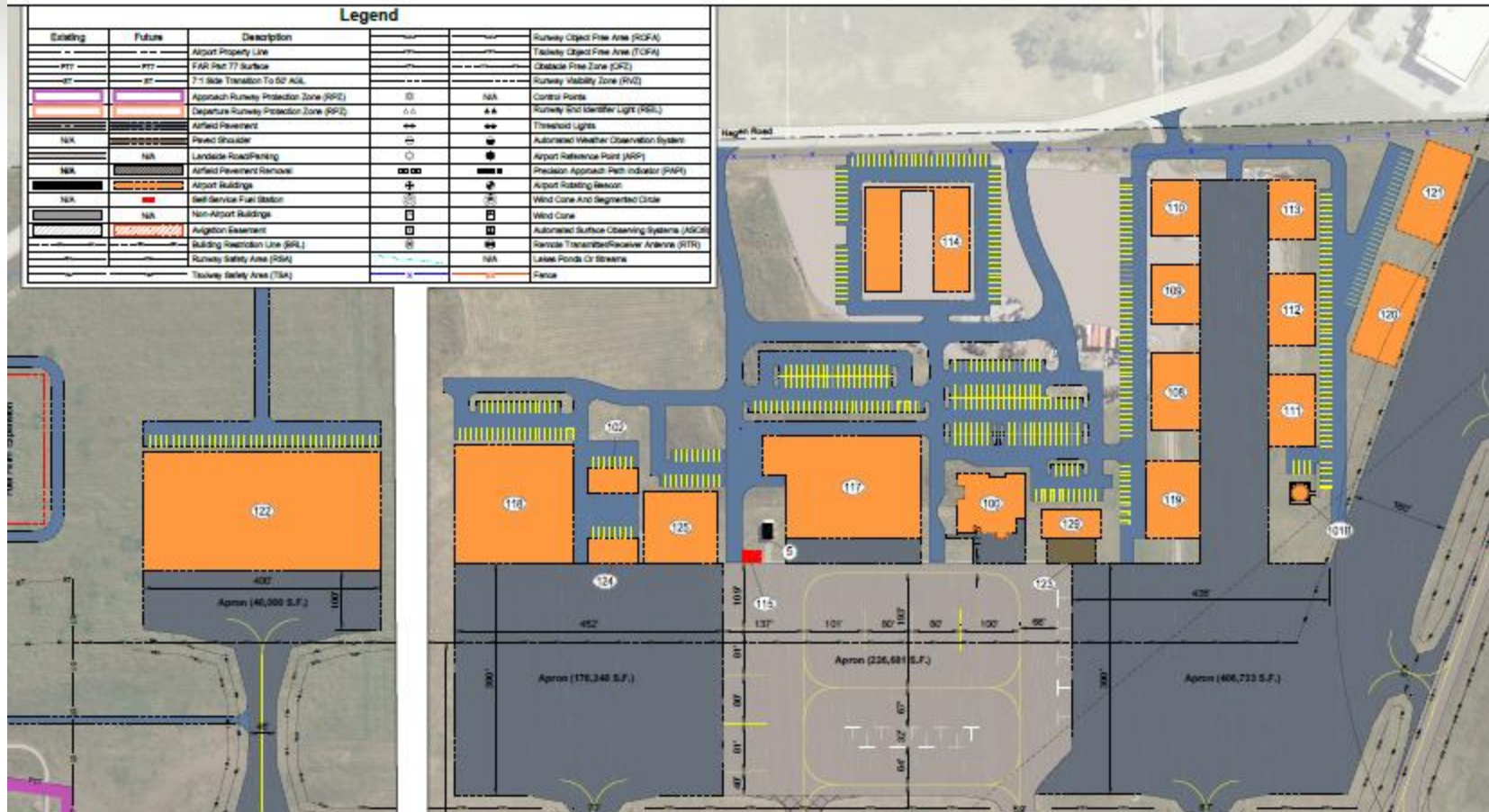


Air Traffic Control Tower Preliminary Siting

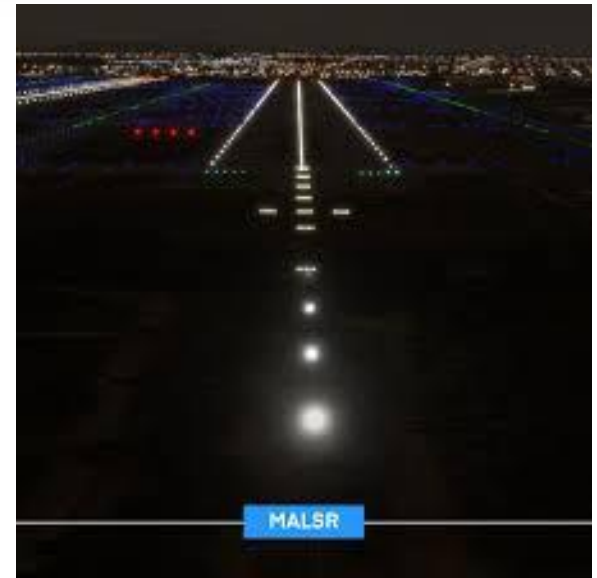
Figure H
Candidate Site Locations



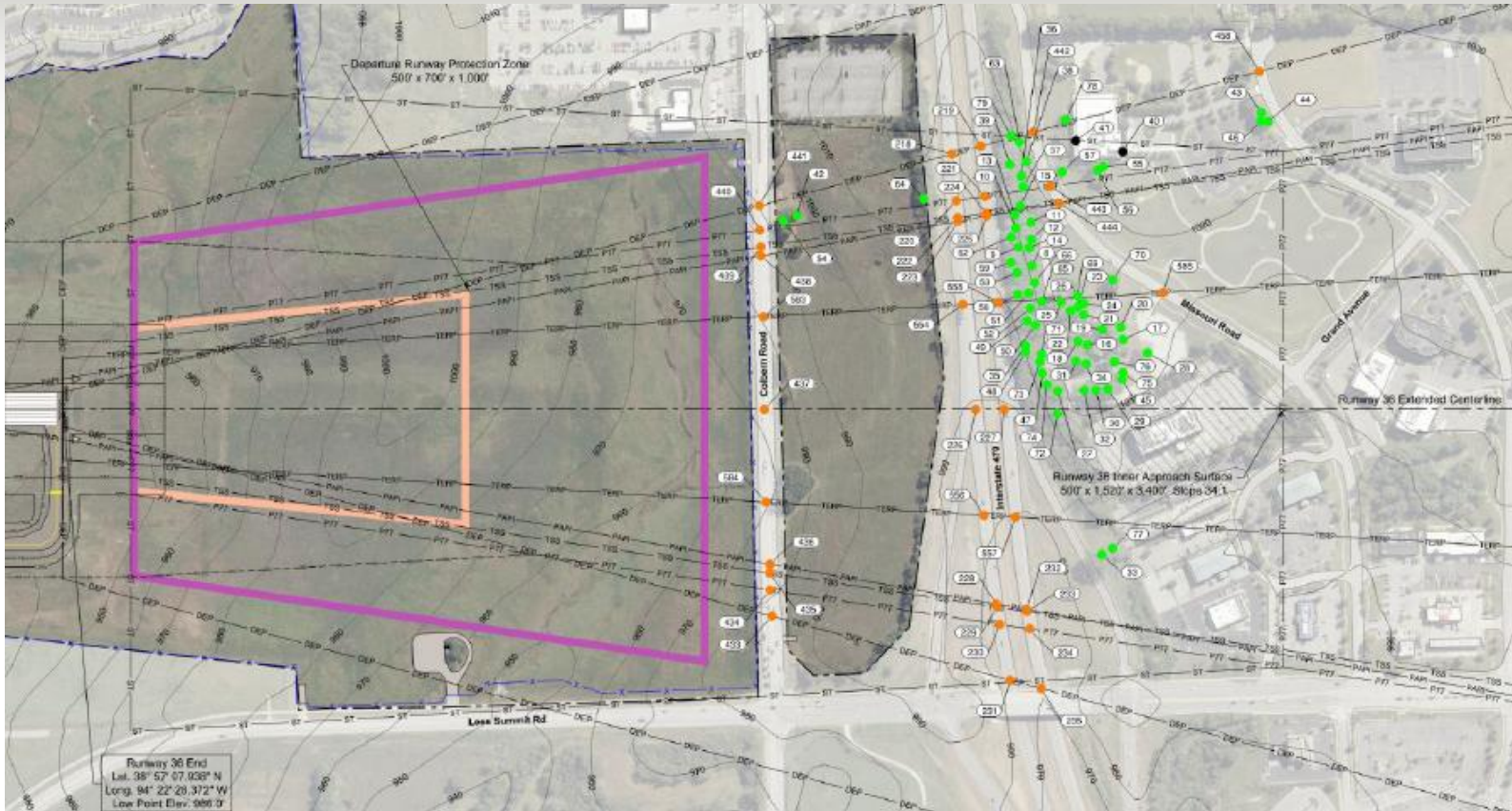
ATC Site Recommendation



Runway 36 Precision Approach



Obstacle Action Plan



Wildlife Hazzard Assessment

USDA - APHIS - WILDLIFE SERVICES
WILDLIFE HAZARD SITE VISIT 2023

USDA APHIS

Wildlife Services



WILDLIFE HAZARD SITE VISIT 2023

Lee's Summit Municipal Airport

Airport Renaming/Rebranding Update

RESOLUTION NO. 24-12

A RESOLUTION TO RENAME THE LEE'S SUMMIT MUNICIPAL AIRPORT TO KANSAS CITY – LEE'S SUMMIT REGIONAL AND TO BRAND THE CITY'S FIXED BASED OPERATION AS SUMMIT AERO.

WHEREAS, Chapter 4.2 of the 2021 Airport Business Plan describes the necessity of rebranding the Lee's Summit Municipal Airport; and,

WHEREAS, the renaming of the Airport and FBO were discussed during the September 24 and November 12 City Council Meetings; and,

WHEREAS, Consensus was reached on renaming the Lee's Summit Municipal Airport to the Kansas City – Lee's Summit Regional and Summit Aero for the City's FBO.

NOW, THEREFORE, BE IT RESOLVED BY THE CITY COUNCIL OF THE CITY OF LEE'S SUMMIT, MISSOURI, as follows:

SECTION 1. That the City Council hereby authorizes City Staff to make submissions required by the Federal Aviation Administration, FAA, or other agencies to affect this airport name change.

SECTION 2. That this Resolution shall be in full force and effect immediately upon its passage and adoption, and approval by the Mayor.

PASSED and ADOPTED by the City Council for the City of Lee's Summit, Missouri, and approved by the Mayor of said City this 12th day of November, 2024.

ATTEST:


City Clerk Trisha Fowler Arcuri

APPROVED AS TO FORM:


City Attorney Brian W. Head




Mayor William A. Baird



Federal Aviation Administration
901 Locust, Rm 364
Kansas City, MO 64106-2325

Airports Division, ACE-600

January 23, 2025

TO:

City Of Lee's Summit
Attn: Joel Arrington
2751 NE Douglas
Lee's Summit, MO 64064
joel.arrington@cityofls.net

NOTICE OF AIRPORT AIRSPACE ANALYSIS DETERMINATION ALTER PUBLIC USE AIRPORT **NO OBJECTION**

The Federal Aviation Administration (FAA) has conducted an aeronautical study under the provisions of Title 14 of the Code of Federal Regulations, Part 157, concerning:

RE: (See attached Table 1 for referenced case(s))

Table 1 - Letter Referenced Case(s)

ASN	Prior ASN	Airport Name	Description	Location	Latitude (NAD83)	Longitude (NAD83)	Airport Elevation (feet)
2024-ACE-5737-NRA		LEE'S SUMMIT MUNI	The City of Lee's Summit City Council has adopted Resolution 24-12 to rename the Lee's Summit Municipal Airport to the following name: Kansas City-Lee's Summit Regional	LEE'S SUMMIT, MO	38-57-32.74N	94-22-18.82W	0

*** Airspace Specialist will forward name change notice to Airport Data Team (ADT) for processing.

Our aeronautical study has determined that the proposed alteration will not adversely affect the safe and efficient use of navigable airspace by aircraft. We do not object to the proposal.

This determination does not constitute FAA approval or disapproval of the physical development involved in the proposal. It is a determination with respect to the safe and efficient use of navigable airspace by aircraft and with respect to the safety of persons and property on the ground. In making the determination, the FAA has considered matters such as the effects the proposal would have on existing or planned traffic patterns of neighboring airports, the effects it would have on the existing airspace structure and projected programs of the FAA, the effects it would have on the safety of persons and property on the ground, and the effects that existing or proposed manmade objects (on file with the FAA) and known natural objects within the affected area would have on the airport proposal.

KANSAS CITY-LEE'S SUMMIT REGIONAL (LXT)

View active [NOTAMS](#) | View in [Map](#)

General Information

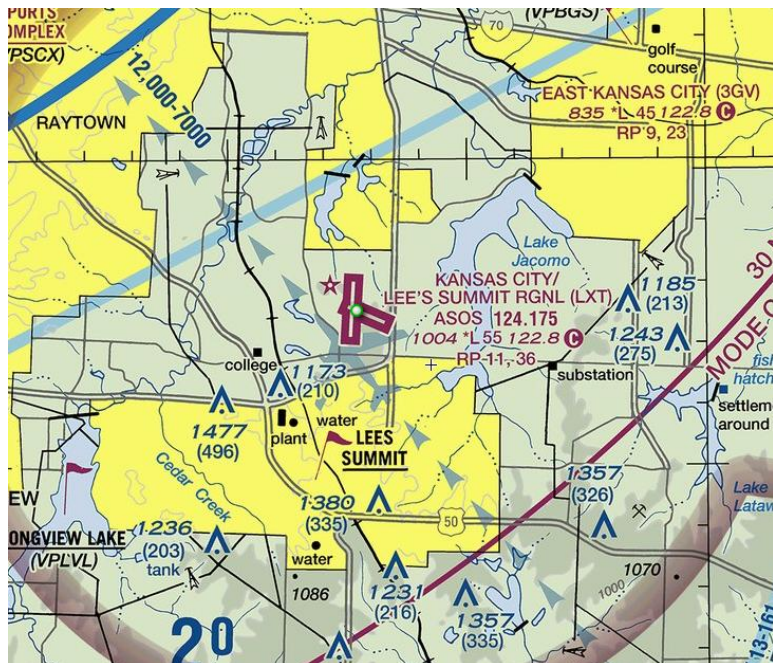
Runways / Helipads / Vertipads

Services & Facilities

General Information

- Associated City **1** LEE'S SUMMIT
- Facility Name **1** KANSAS CITY-LEE'S SUMMIT REGIONAL
- CBD to Facility (NM) **1** 3 North
- State **1** MO
- County **1** JACKSON
- Region / ADO **1** ACE
- Sectional Aeronautical Chart **1** KANSAS CITY
- Facility Internet Address **1**

LINKS TO 3RD PARTY SITES WILL BE REMOVED.



Federal Aviation
Administration

6.0.3.49

National Based Aircraft Inventory Program

Go to Loc. ID Go [See Airport List](#) [Dashboard](#) [Reports](#)

KANSAS CITY/LEE'S SUMMIT RGNL (LXT) LEE'S SUMMIT, MO

[Airport Details](#) [Users](#) [Edit Counts](#) [Import Aircraft](#)

250

MISSOURI

LEE'S SUMMIT

KANSAS CITY/LEE'S SUMMIT RGNL (LXT)(KLXT) 3 N UTC-6(-5DT) N38°57.55' W94°22.31'

KANSAS CITY
L-161, A
IAP, AD

1004 B TPA--See Remarks NOTAM FILE LXT

RWY 18-36: H5501X100 (CONC-GRVD) S-40, D-60

PCN 22 R/C/W/T MIRL

RWY 18: REIL. PAPI(P4L)--GA 3.0° TCH 44'

RWY 36: REIL. PAPI(P4L)--GA 3.0° TCH 45'. Rgt tlc.

RWY 11-29: H4000X75 (CONC) S-30, D-30 MIRL

RWY 11: REIL. PAPI(P4L)--GA 3.0° TCH 45'. Rgt tlc.

RWY 29: REIL. PAPI(P4R)--GA 3.0° TCH 40'

SERVICE: S4 FUEL 100LL, JET A, MOGAS OK4 LGT Actvt REIL Rwy

18 and 36, 11 and 29; MIRL Rwy 11 and 29, 18 and 36--CTAF.

PAPI Rwy 11 and 29, 18 and 36 opr consly.

AIRPORT REMARKS: Attended 1200-0200Z. Wildlife on and in/ov arpt. 24

hr self service fuel 100LL and MOGAS. Mobile fuel Jet A and 100LL.

After hrs fuel call 816-969-1186. Call out fee. Arpt trml bldg open

24 hrs. When winds are less than 5 knots use Rwy 18. Apch end of

Rwy 18, Rwy 36 and Rwy 29 are not mutually visible due to terrain.

No right turns under 2500 ft MSL or within 3 miles of arpt when

departing on Rwy 29. No left turns within 1/2 mi of end of rwy when

departing on Rwy 18. No left turns under 2500 ft MSL or within 3

miles of the arpt departing on Rwy 36. TPA--acft under 6,000 lbs

1,000 ft AGL, acft over 6,000 lbs 1,500 ft AGL.

AIRPORT MANAGER: 816-969-1186

WEATHER DATA SOURCES: ASOS 124.175 (816) 347-9807.

COMMUNICATIONS: CTAF/UNCOM 122.8

KANSAS CITY APP/DEP CON 118.4

CLNC DEL 118.45

CLEARANCE DELIVERY PHONE: For CD ctc Kansas City Apch 118.45 or 816-329-2710.

RADIO AIDS TO NAVIGATION: NOTAM FILE COU.

NAPOLEON (L) (L) VORTACW 115.15 ANX Chan 98(Y) N39°05.73' W94°07.73' 227° 14.0 NM to fld. 878/E.

TACAN AZIMUTH & DME unusable:

220°-230° byd 35 NM blo 2,000'

VOR unusable:

129°-139°



Now for the Marketing



Now for the Marketing



Kansas City-Lee's Summit
REGIONAL AIRPORT

