

CPG DBA

SUMMIT HOMES
 120 SE 20TH ST.
 LEE'S SUMMIT, MO 64082
 816.526.8700

COPYRIGHT 2017
 ALL RIGHTS RESERVED. THIS DOCUMENT IS THE PROPERTY OF SUMMIT HOMES COMMUNITY DEVELOPMENT CENTER. IT IS TO BE USED ONLY FOR THE PROJECT AND SITE SPECIFICALLY IDENTIFIED HEREIN. ANY REUSE OR MODIFICATION OF THIS DOCUMENT WITHOUT THE WRITTEN PERMISSION OF SUMMIT HOMES COMMUNITY DEVELOPMENT CENTER IS STRICTLY PROHIBITED.

NORTH PARK VILLAGE
 ENTRANCE MONUMENT

PROFESSIONAL SEAL

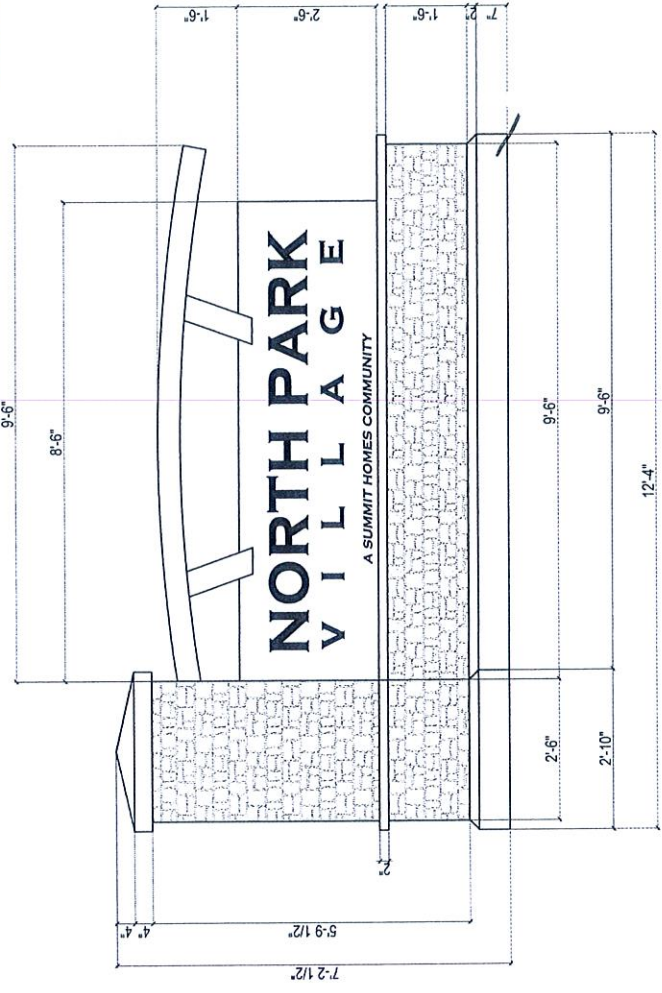
ISSUE DATE:
 6.15.2017

SHEET NUMBER:
A1

RECEIVED

JUN 21 2017

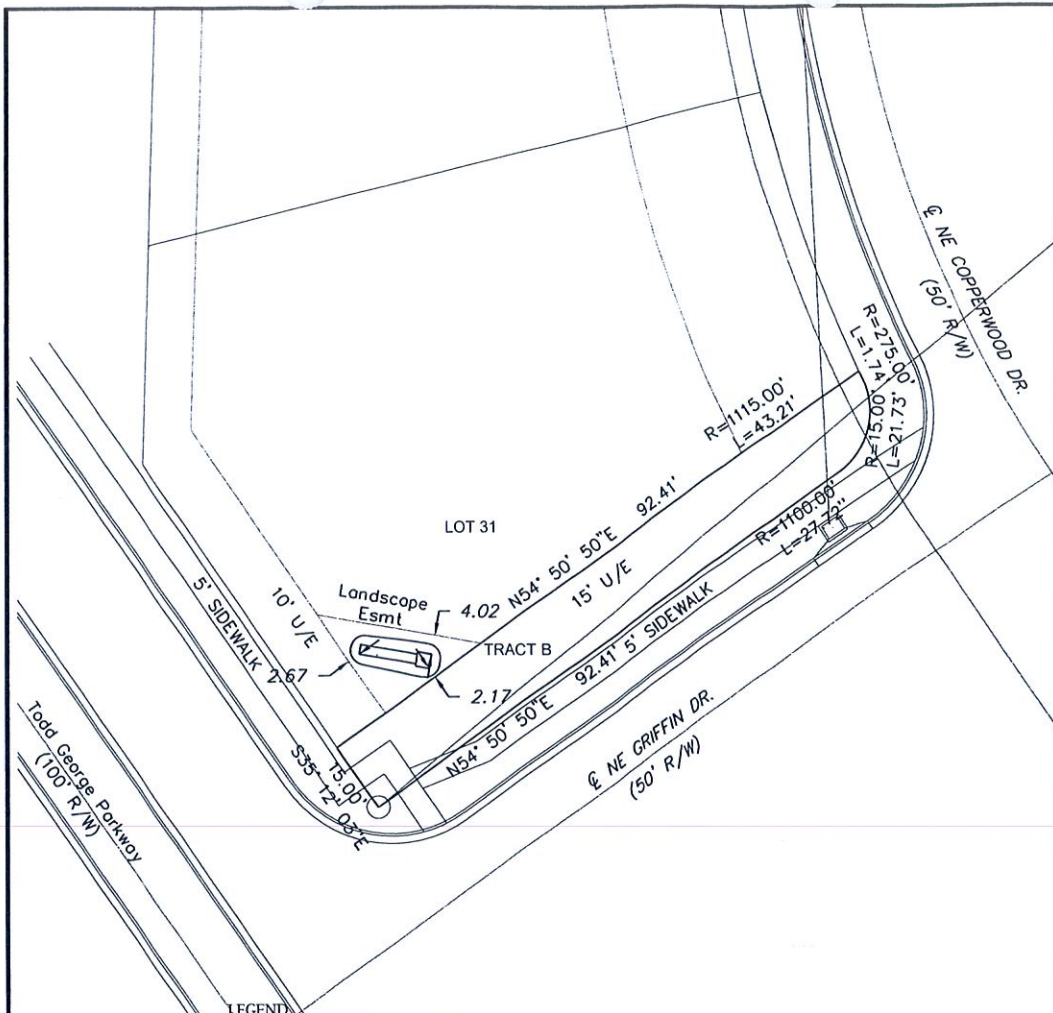
City of Lee's Summit
 Development Center



~54 SQ. FT. STRUCTURE AREA

TODD GEORGE PARKWAY ENTRANCE - COMMUNITY MONUMENT (1)
 SCALE: 1/4" = 1'-0"

- NOTES:
1. "NORTH PARK" LETTERS WILL BE 8".
 2. "VILLAGE" LETTERS WILL BE 6".
 3. "A SUMMIT HOMES COMMUNITY" LETTERS WILL BE 2".



LEGEND

- Gas Meter
- Telephone or Fiber-Optic Pedestal
- Cable TV Pedestal
- Electric Pedestal
- Light Pole
- Mailbox
- Fire Hydrant
- Water Valve



Scale 1"=30'

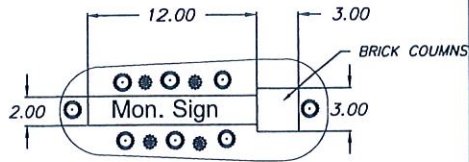
RECEIVED

JUN 21 2017

City of Lee's Summit
Development Center

NOTES

1. BUILDER TO VERIFY ALL BUILDING ELEVATIONS AND DIMENSIONS.
2. THIS PLOT PLAN DOES NOT CONSTITUTE A BOUNDARY SURVEY.
3. THE EASEMENTS SHOWN ON THIS PLOT PLAN ARE TAKEN FROM THE FINAL PLAT. OTHER EASEMENTS MAY EXIST.



- Sem Sorbaria - 3'-4' Height, 3'-4' Apart
- 'Arkansas' Bluestar - 3' Height, 4' Wide

ENGINEERING SOLUTIONS
ENGINEERING & SURVEYING
30 SE 30TH STREET
LEE'S SUMMIT, MO 64082
P (816) 623-9888 F (816) 623-9849
WWW.ENGINEERINGSOLUTIONS.COM

THIS DRAWING IS NOT VALID UNLESS THE SIGNATURE, DATE AND SEAL OF THE ENGINEER WHO SUPERVISED THE PREPARATION OF THIS DRAWING HAS BEEN AFFIXED HERETO.

PLOT PLAN - LOT 31

NORTH PARK VILLAGE
CITY, COUNTY, STATE

CMH Properties
120 SE 30th Street
Lee's Summit, MO

PROJECT NO.	FILE NAME	DATE	SHEET	OF
1	NPV Monument Sign	6-16-17	1	1

Rev:

CPG DBA
SUMMIT HOMES
 120 SE. 307TH ST.
 LEE'S SUMMIT, MO 64092
 816-246-9700

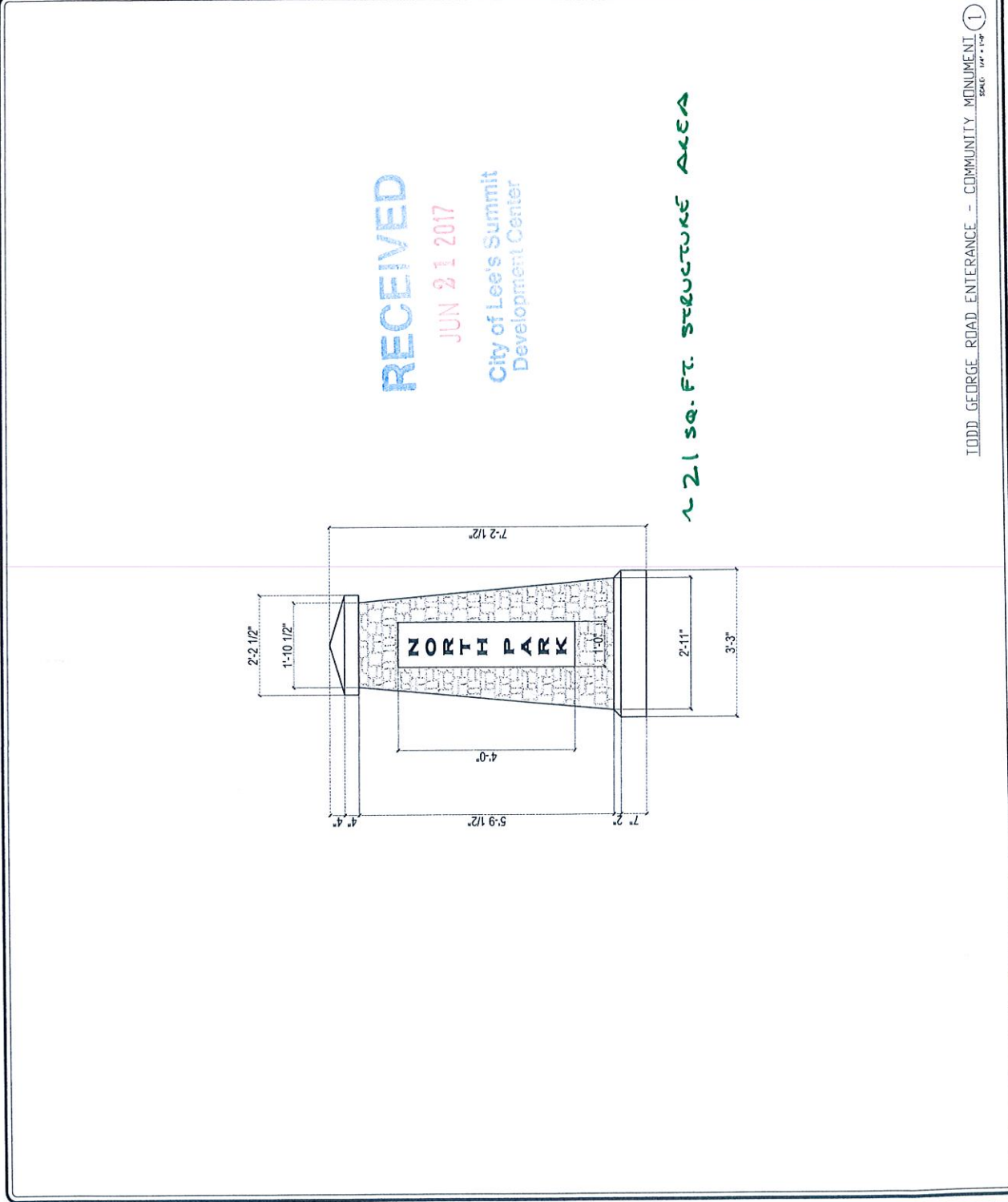
COPYRIGHT 2017
 ALL RIGHTS RESERVED. THIS DRAWING IS THE PROPERTY OF SUMMIT HOMES AND IS TO BE USED ONLY FOR THE PROJECT AND SITE SPECIFICALLY IDENTIFIED HEREON. ANY REUSE OR MODIFICATION OF THIS DRAWING WITHOUT THE WRITTEN PERMISSION OF SUMMIT HOMES IS STRICTLY PROHIBITED.

NORTH PARK VILLAGE
 ENTRANCE MONUMENT

PROFESSIONAL SEAL:
STATE OF MISSOURI
 LICENSE NO. 0000000000
 EXPIRES 12/31/2017

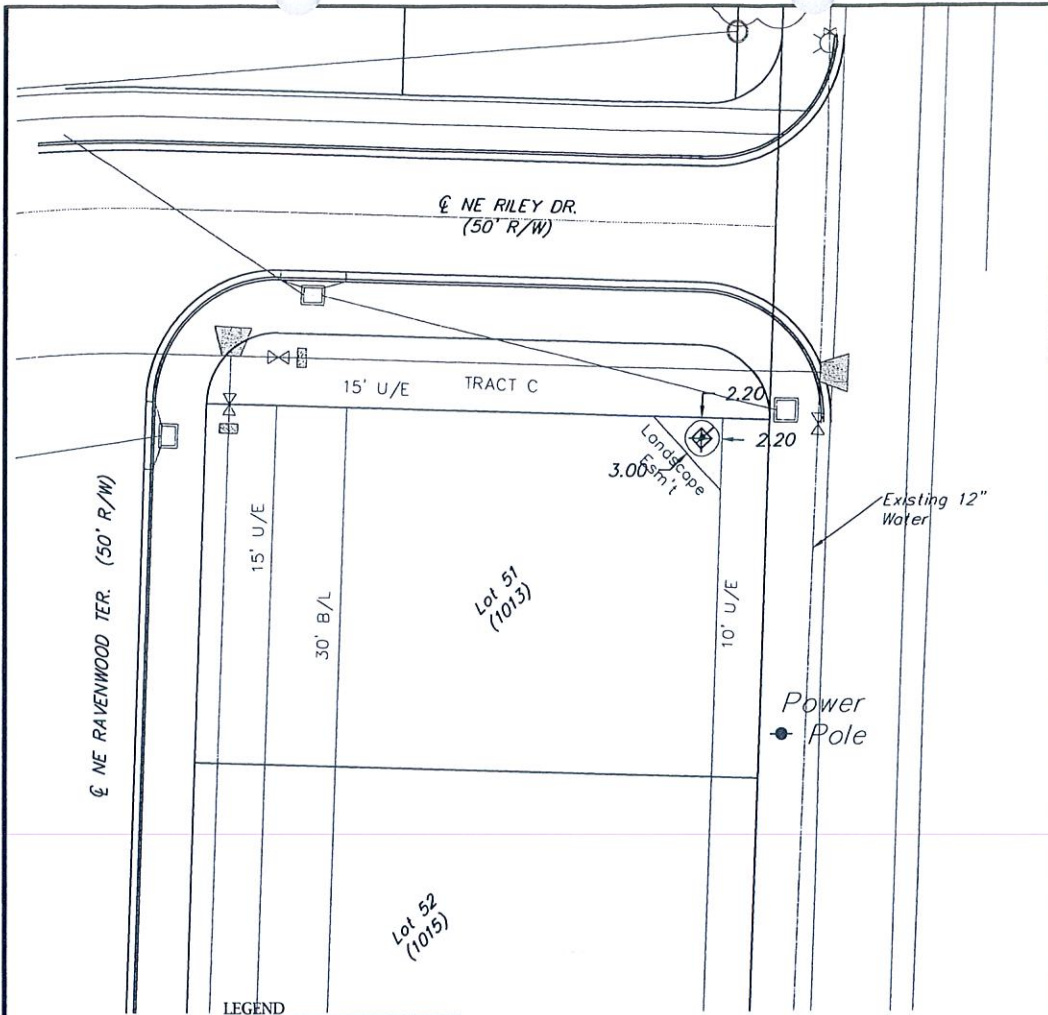
ISSUE DATE:
 6.15.2017

SHEET NUMBER
A1



NOTES:
 1. 4 INCH SIZE TEXT ON BOTH SOUTH AND NORTH SIDES OF MONUMENT ONLY.

TODD GEORGE ROAD ENTRANCE - COMMUNITY MONUMENT ①
 SCALE: 1/4" = 1'-0"



- LEGEND**
- Gas Meter
 - Telephone or Fiber-Optic Pedestal
 - Cable TV Pedestal
 - Electric Pedestal
 - Light Pole
 - Mailbox
 - Fire Hydrant
 - Water Valve



Scale 1" = 30'

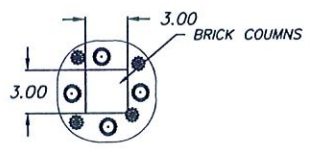
RECEIVED

JUN 21 2017

City of Lee's Summit
Development Center

NOTES

1. BUILDER TO VERIFY ALL BUILDING ELEVATIONS AND DIMENSIONS.
2. THIS PLOT PLAN DOES NOT CONSTITUTE A BOUNDARY SURVEY.
3. THE EASEMENTS SHOWN ON THIS PLOT PLAN ARE TAKEN FROM THE FINAL PLAT. OTHER EASEMENTS MAY EXIST.



- Sem Sorbaria - 3'-4' Height, 3'-4' Apart
- 'Arkansas' Bluestar - 3' Height, 4' Wide

ENGINEERING

SOLUTIONS

ENGINEERING & SURVEYING

50 SE 30TH STREET
LEE'S SUMMIT, MO 64082
P (816) 623-9888 F (816) 623-9849
WWW.ENGINEERINGANDSURVEYSOLUTIONS.COM

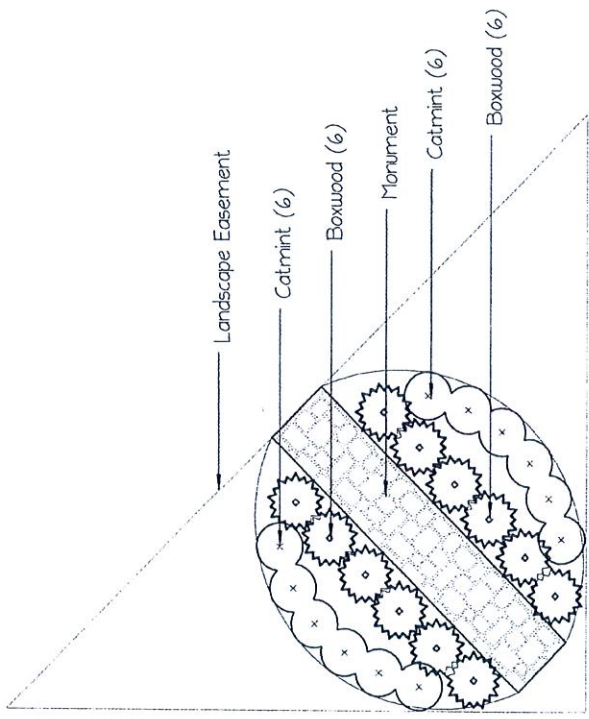
THIS DRAWING IS NOT VALID UNLESS THE SIGNATURE, DATE AND SEAL OF THE ENGINEER WHO SUPERVISED THE PREPARATION OF THIS DRAWING HAS BEEN AFFIXED HERETO.

PLOT PLAN - LOT 51			
NORTH PARK VILLAGE			
CITY, COUNTY, STATE			
CMH Properties 120 SE 30th Street Lee's Summit, MO			
PROJECT NO. 1	FILE NAME NPV Monument Sign	DATE 6-16-17	SHEET OF 1 1
Rev:			

RECEIVED

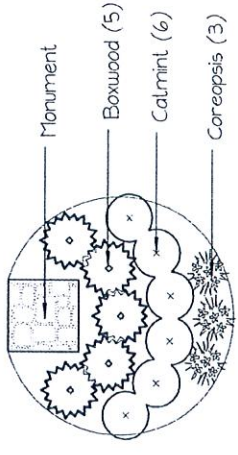
JUN 21 2017

City of Lee's Summit
 Development Center



North Park Village
 Monument 1

Todd George Parkway
 Entrance



North Park Village
 Monument 2

Todd George Road
 Entrance