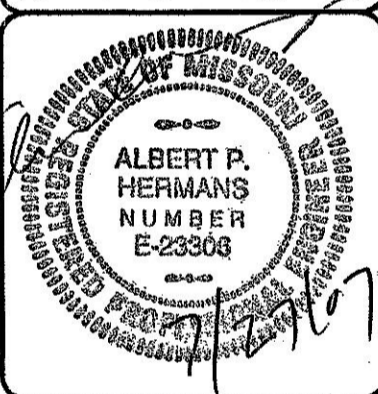


U.S. INTERSTATE HIGHWAY 470

COPYRIGHT 2007 BY SDC ENGINEERING, INC. DRAWINGS MAY NOT BE DUPLICATED WITHOUT WRITTEN PERMISSION.

THIS DRAWING HAS BEEN DEVELOPED BY SDC ENGINEERING, INC. EXCLUSIVELY FOR JOHN GRAMLICH FOR THE PROJECT LISTED IN THIS TITLE BLOCK. ANY OTHER UNAUTHORIZED USE IS PROHIBITED.

SUMMIT SELF STORAGE
 1920 N.E. RICE ROAD
 LEE'S SUMMIT, MO.



ENGINEERING, INC.
 Consulting Structural and Civil Engineers
 9600 East 53rd Street, Suite 201
 Raytown, Missouri 64133
 816-356-1445 Fax: 816-356-1477

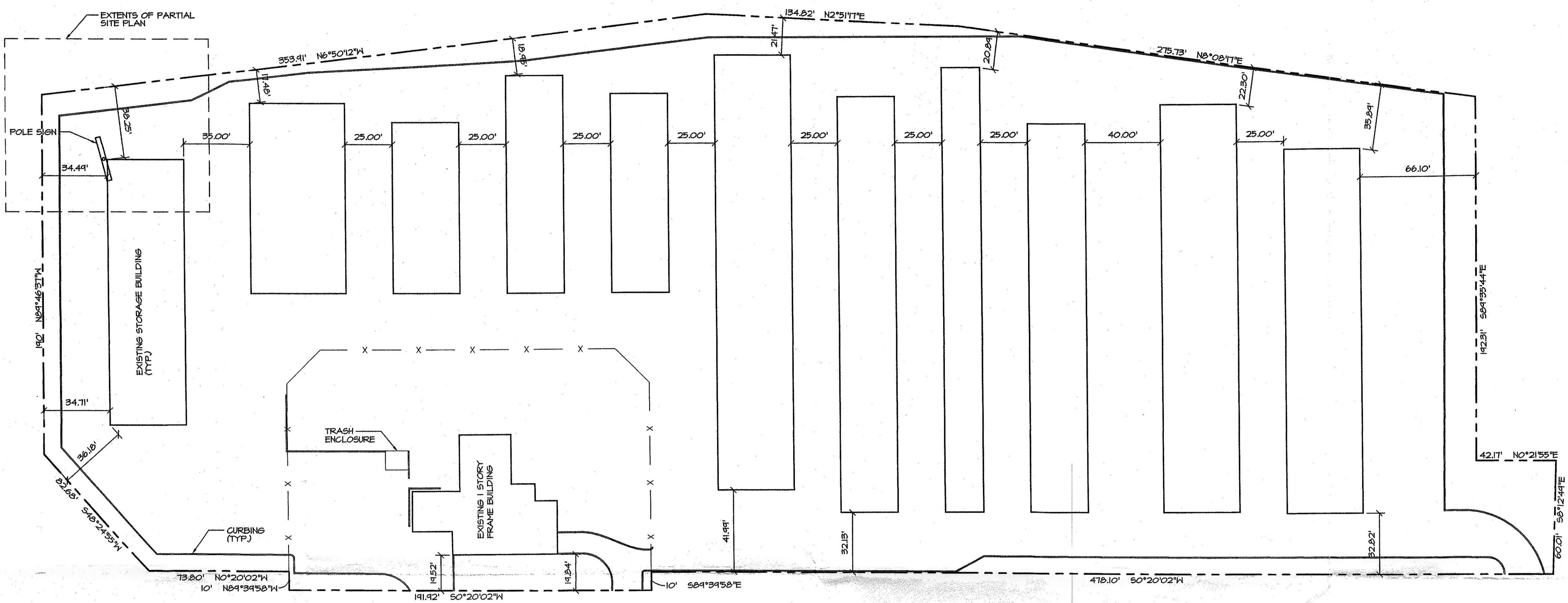


DATE	6/28/07
REVISION	
1	7/21/07
2	
3	
4	

DWG. 1 of 1

COLBERN ROAD

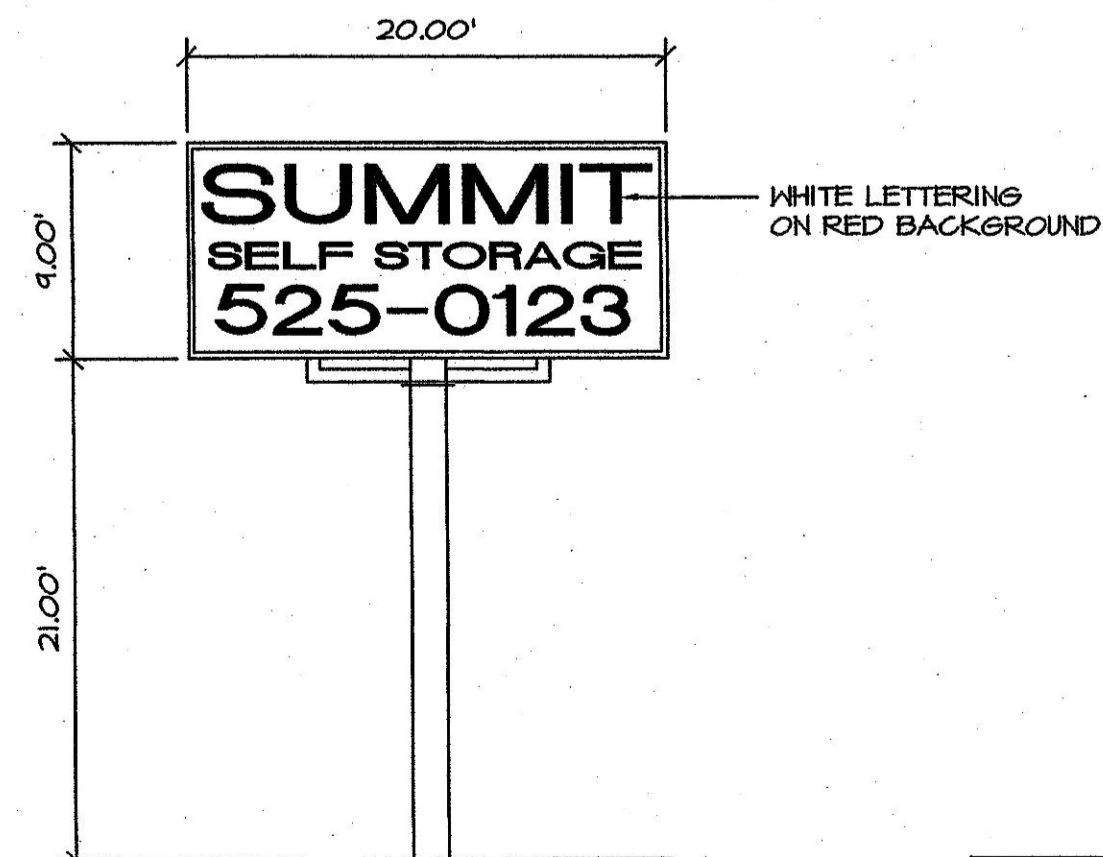
BASELINE COLBERN ROAD



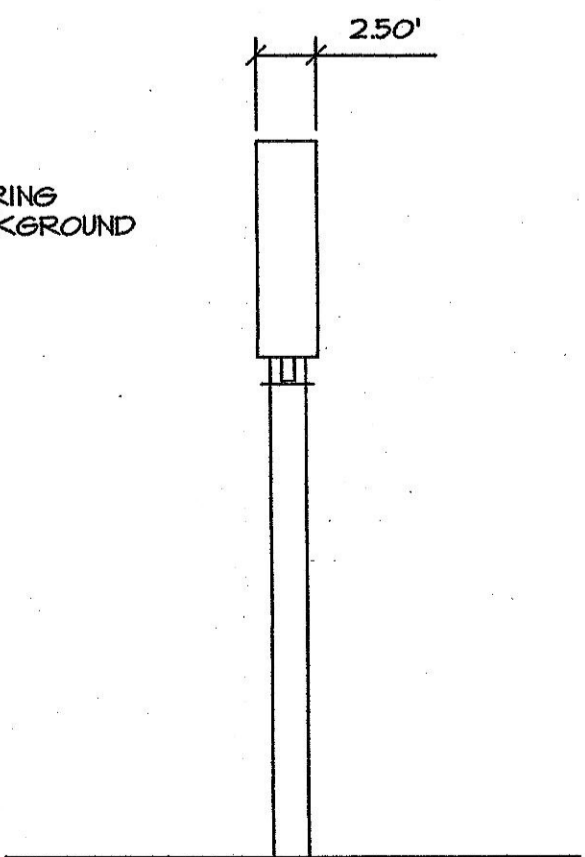
NE RICE ROAD (OLD MISSOURI STATE HIGHWAY 291)



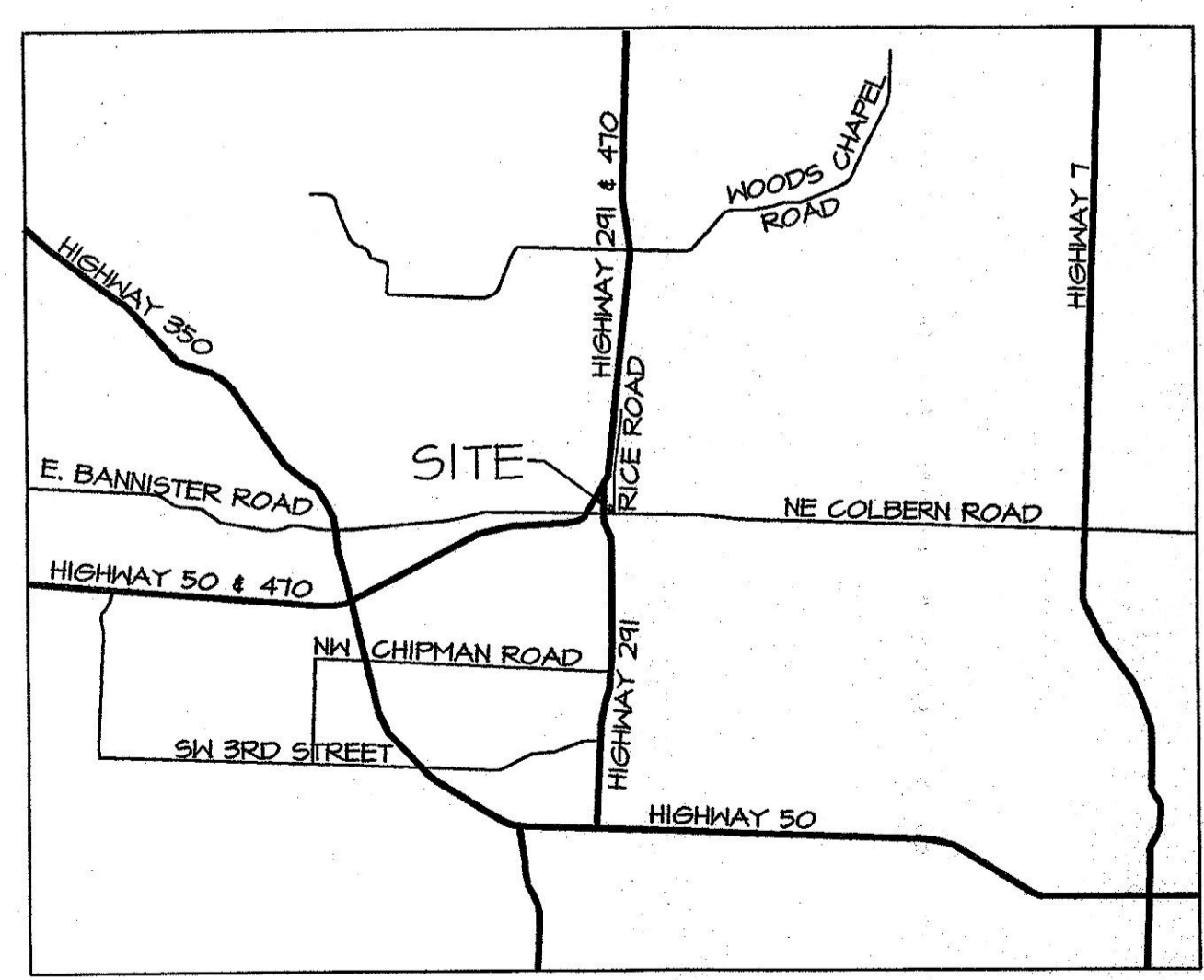
SITE PLAN
SCALE: 1" = 30'



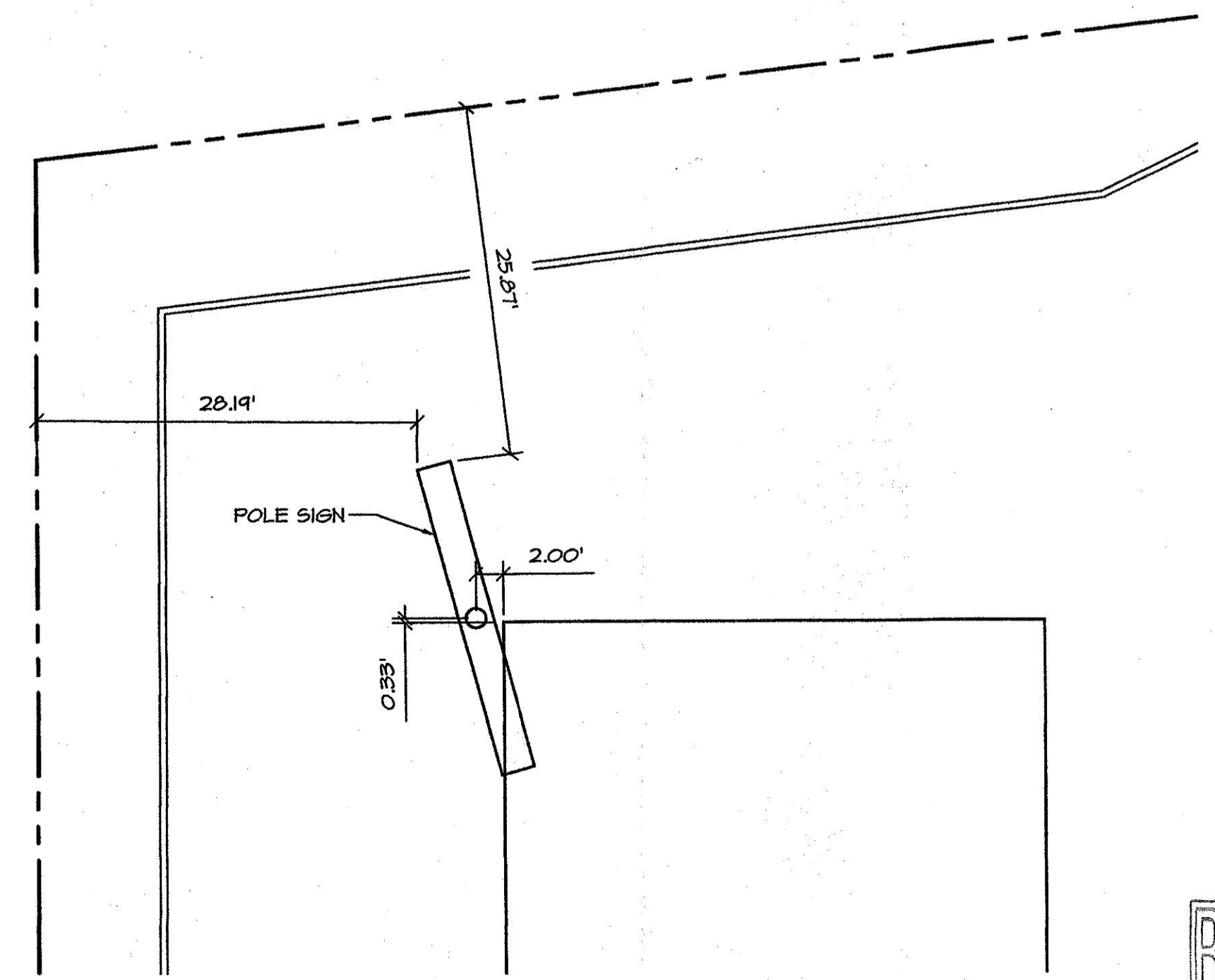
FRONT & BACK ELEVATION
SCALE: 1/8" = 1'-0"



SIDE ELEVATION
SCALE: 1/8" = 1'-0"

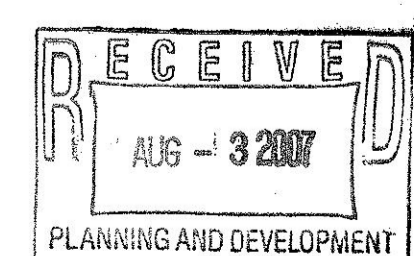


VICINITY PLAN
NO SCALE



PARTIAL SITE PLAN
SCALE: 1" = 10'

-2007-144-



COPY