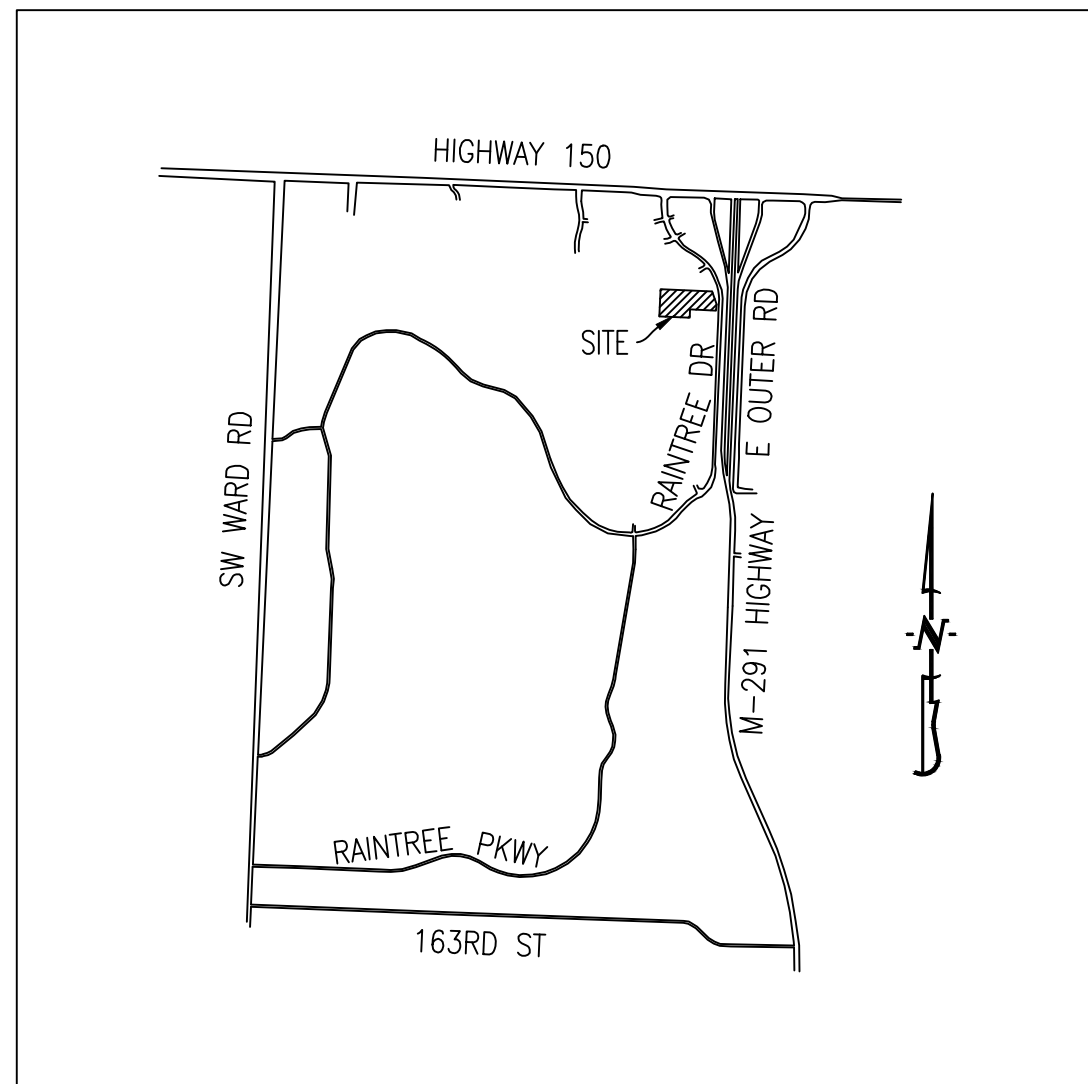


LOCATION MAP

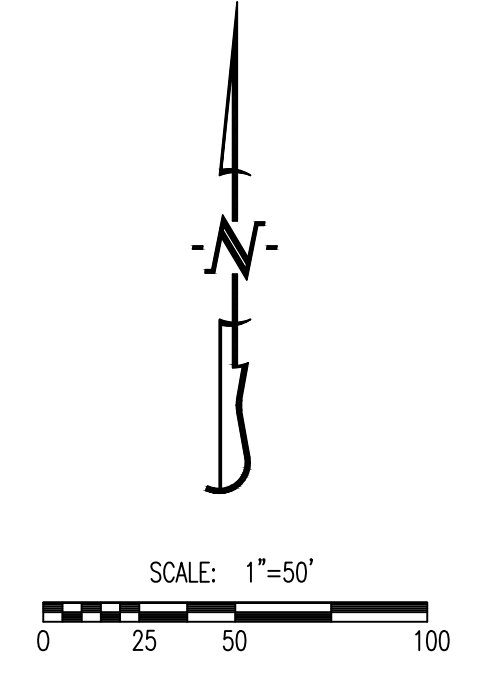


LEGAL DESCRIPTION:

LOT 1A, SOUTH M-291 SAFETY MINI STORAGE LOTS 1A, 2A & 3A, RECORDED INSTRUMENT NO. 20060028581, A SUBDIVISION IN LEE'S SUMMIT, JACKSON COUNTY, MISSOURI.

LANDSCAPING NOTE:

OWNER SHALL ENSURE THAT CURRENT LANDSCAPING MEETS THE APPROVED APPROVED LIGHTING & LANDSCAPING PLAN FOR SOUTH M-291 SAFETY MINI STORAGE DATED 11/07/2003, APPROVED STAMP DATE 12/09/2003. IF THERE ARE ANY DEFICIENCIES TO THE LANDSCAPING PLAN THE OWNER SHALL BRING THE SITE TO MEET THE APPROVED PLAN.



REVISIONS:

NO.	DATE
ORIGINAL	08/19/2019
1	10/14/2019

THIS SHEET HAS BEEN SIGNED, SEALED AND DATED ELECTRONICALLY

TIMOTHY D. CROCKETT
MISSOURI LICENSE: 2004000775

SITE/CIVIL ENGINEER

CROCKETT ENGINEERING
1000 W. WILSON ST. SUITE 100
COLUMBIA, MISSOURI 65203
(314) 447-0292
www.crockettengineering.com
Crockett Engineering Consultants, LLC
Missouri License of Authority 000000001

OWNER

NEW TIG-STORAGEMART PARTNERS FOR LLC
2611 STADLUM BLVD. SUITE 207
COLUMBIA, MO 65203

STORAGE MART 156

3920 S. STATE ROUTE 291
SECTION 3, TOWNSHIP 47 NORTH, RANGE 31 WEST
LEE'S SUMMIT, JACKSON COUNTY, MISSOURI

DRAWING INCLUDES:

SITE PLAN

DESIGNED: TDC
DRAWN: JEE
PROJECT NO.: 170604
SHEET: 10F1